

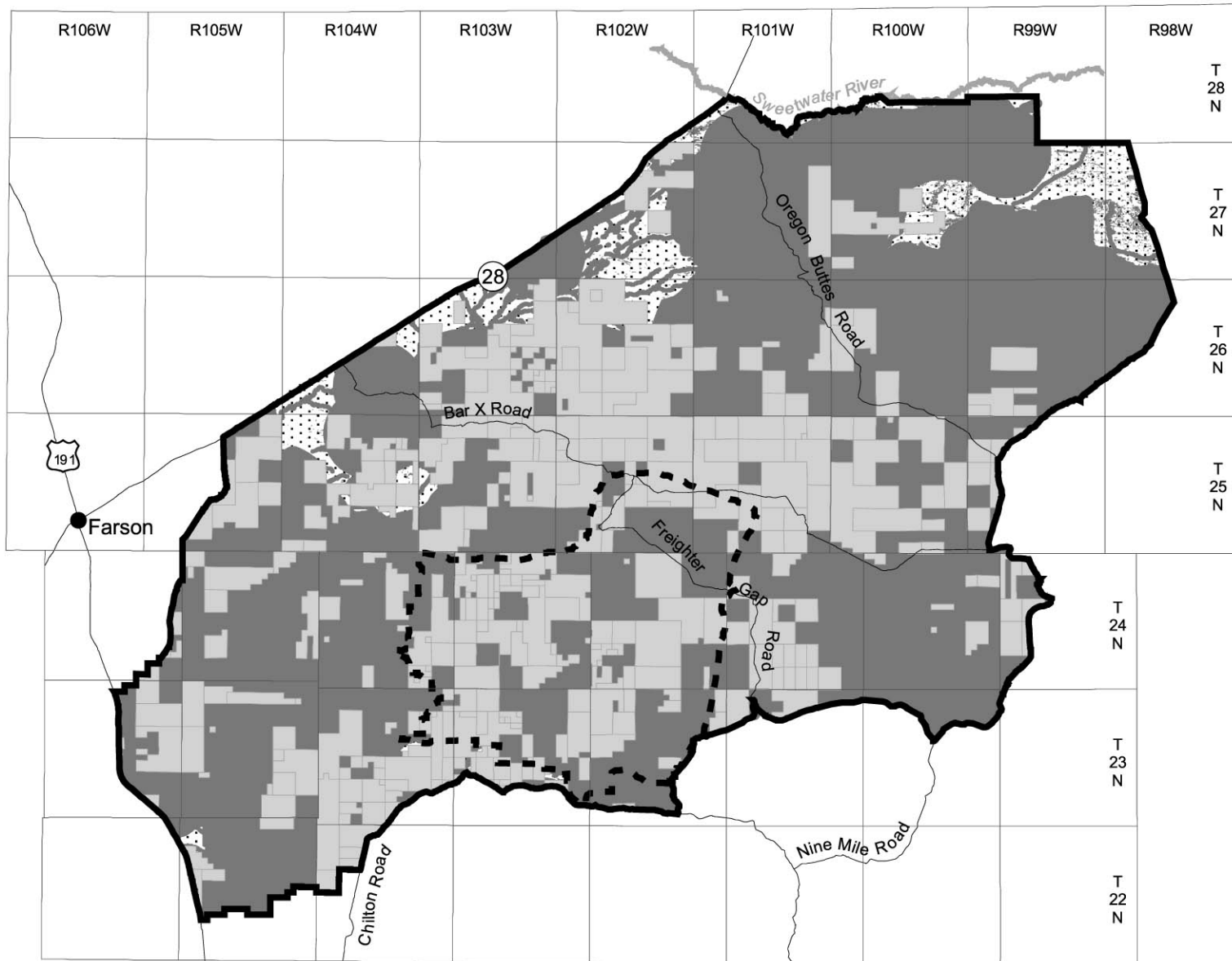
Existing Leases
 Closed to New Leases:

- All Wilderness Study Areas (Non-Discretionary Closure)
- All ACECs + Expansions
- Red Desert Watershed Wetlands, Riparian Areas, and Floodplains (with 500 ft. buffer)
- Expansion Era Roads (with 1/4 mile buffer)
- National Historic Trails (with 1/4 mile buffer)
- Slopes > 20%
- Special Status Plants ACEC (Large-fruited Bladderpod, Meadow Pusssytoes, Nelson's Milkvetch)
- Greater Sage-Grouse Concentration Areas
- Antelope Crucial Habitat
- Elk Birthing Areas
- Elk Crucial Habitat
- Mule Deer Birthing Areas
- Mule Deer Crucial Habitat
- Raptor Nest Sites (with 1/2 to 1 mile buffer)
- Mountain Plover Aggregation Areas
- Connectivity Area
- Greater Sage-Grouse Winter Range*
- Pinnacles Geographic Area
- Tri-Territory Marker

Open to New Leases

Core Area

JMH Boundary



*Only sagebrush vegetation expected to be suitable habitat



Map 31
 Alternative 2
Oil and Gas Leases
 Minerals and Alternative
 Energy Resources