

# ROCKY MOUNTAIN OILFIELD TESTING CENTER

**DETAILED CORE INTERPRETATION  
ALLOWS A NEW PERSPECTIVE ON  
TENSLEEP SANDSTONE  
CORRELATIONS AT TEAPOT DOME  
FIELD, NATRONA CO., WYOMING**

Mark Milliken and Brian Black  
2007 RMS, Snowbird, Utah



# Topics

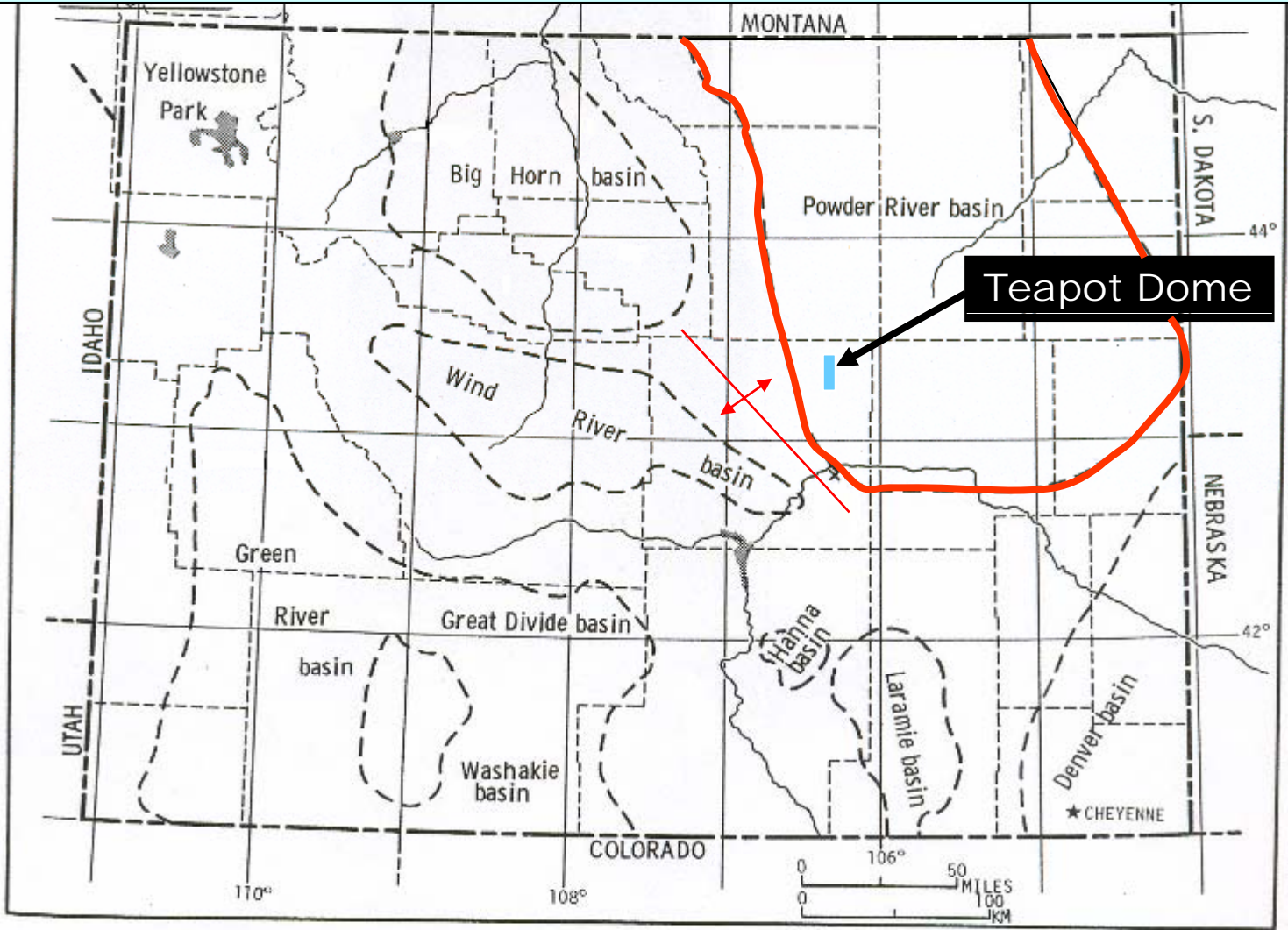
- Introduction to Teapot Dome (NPR-3)
- Tensleep production history
- Geologic structure at NPR-3
- Tensleep depositional environments
- Core and outcrop-based Tensleep stratigraphic terminology at NPR-3
- Cap rock character



# Naval Petroleum Reserve No. 3



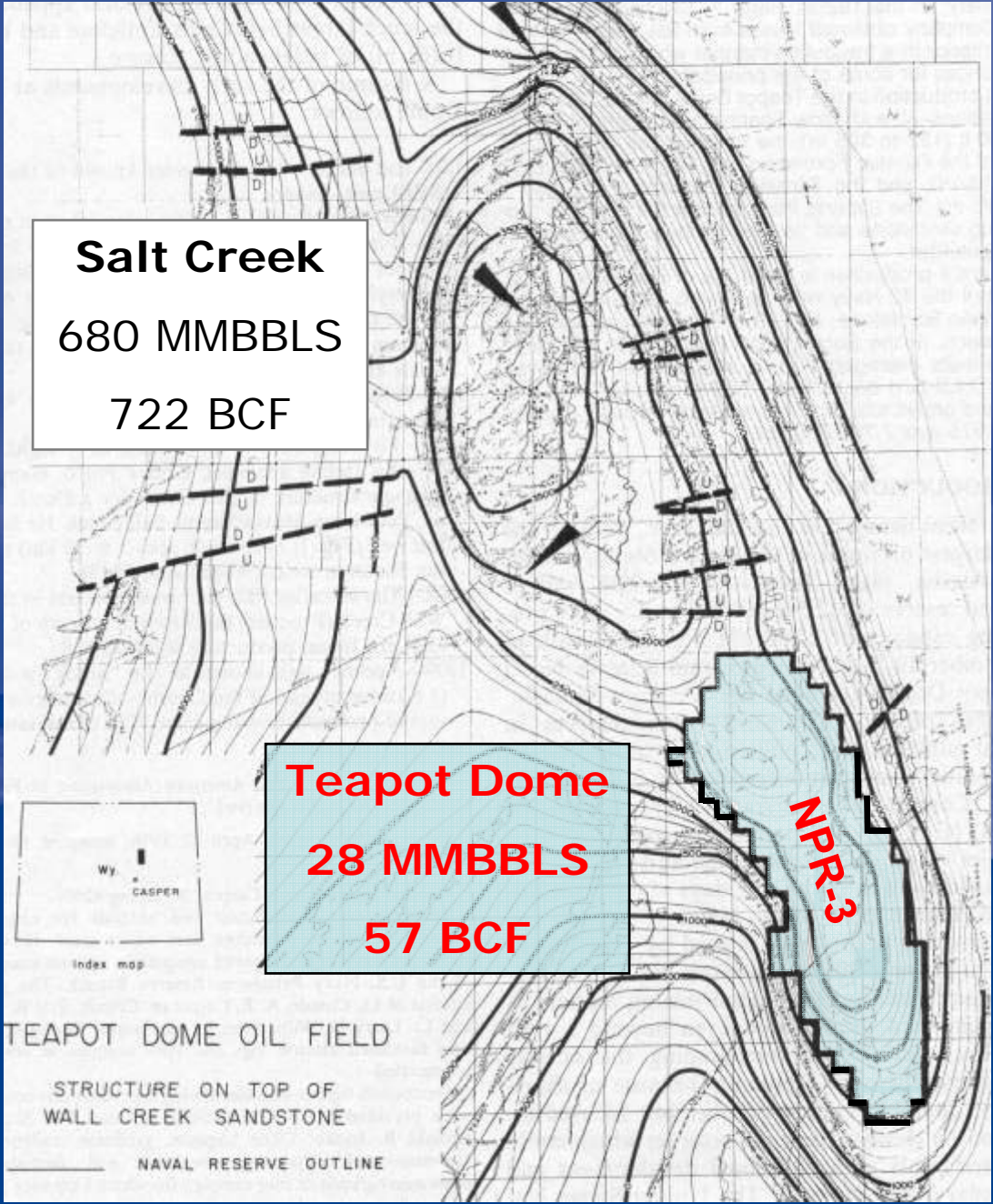
# Wyoming Depositional Basin Settings



# Cumulative Production

**Salt Creek**  
680 MMBBLS  
722 BCF

**Teapot Dome**  
28 MMBBLS  
57 BCF



DEPTH

1000

2000

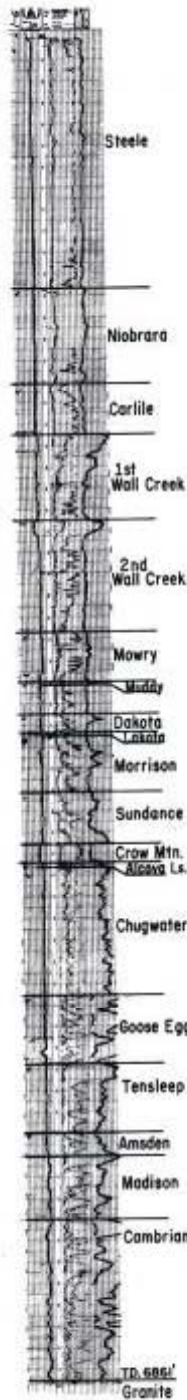
3000

4000

5000

6000

7000



Production

# NPR-3 STRATIGRAPHY

WELL 1-G-10, 1952

UPPER CRETACEOUS

LOWER CRETACEOUS

JURASSIC

TRIASSIC CHUGWATER

PERMIAN GOOSE EGG

PENNSYLVANIAN TENSLEEP

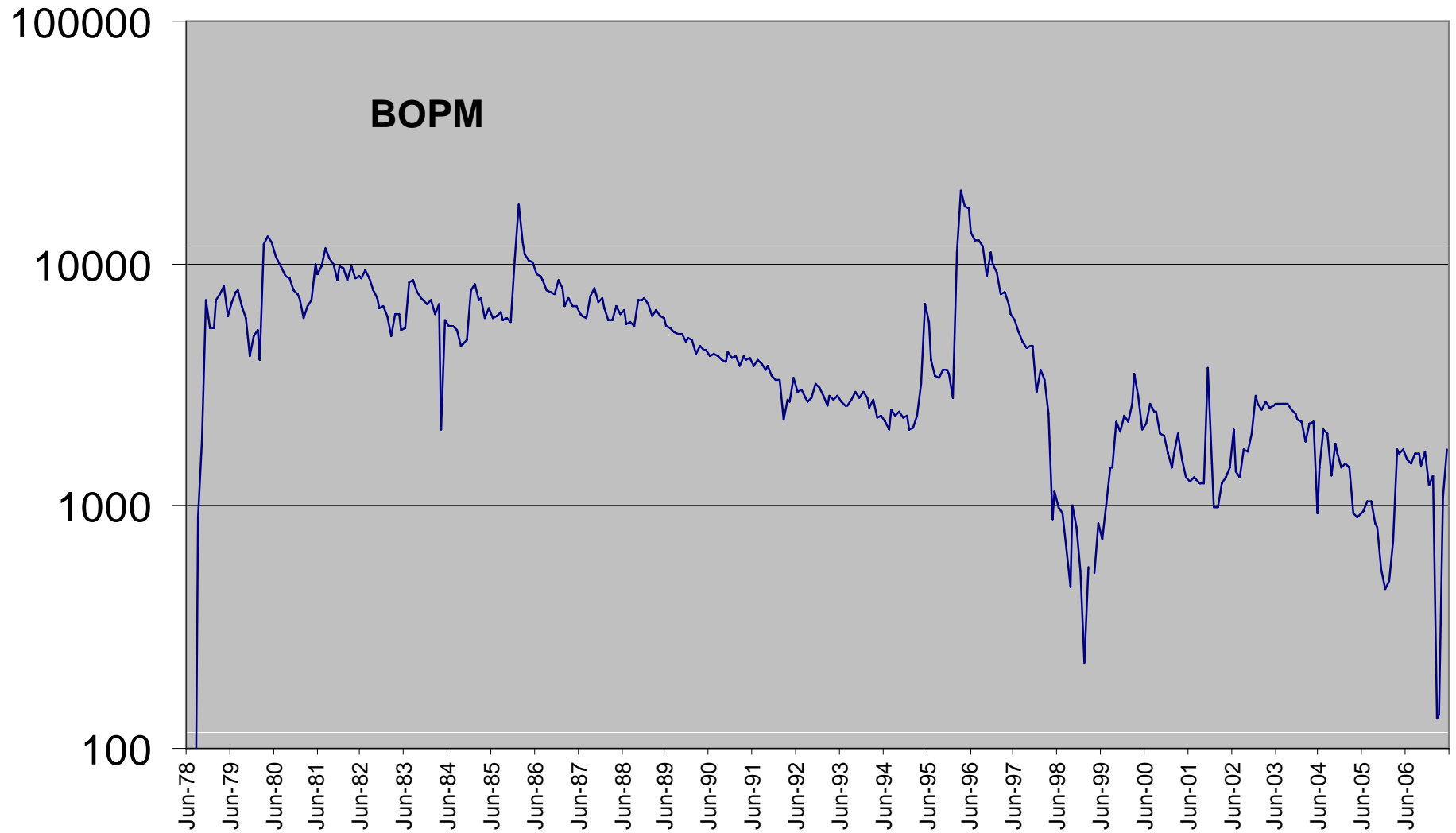
MISSISSIPPIAN MADSION LS

CAMBRIAN SS

PRECAMBRIAN BASEMENT



# Tensleep Production History

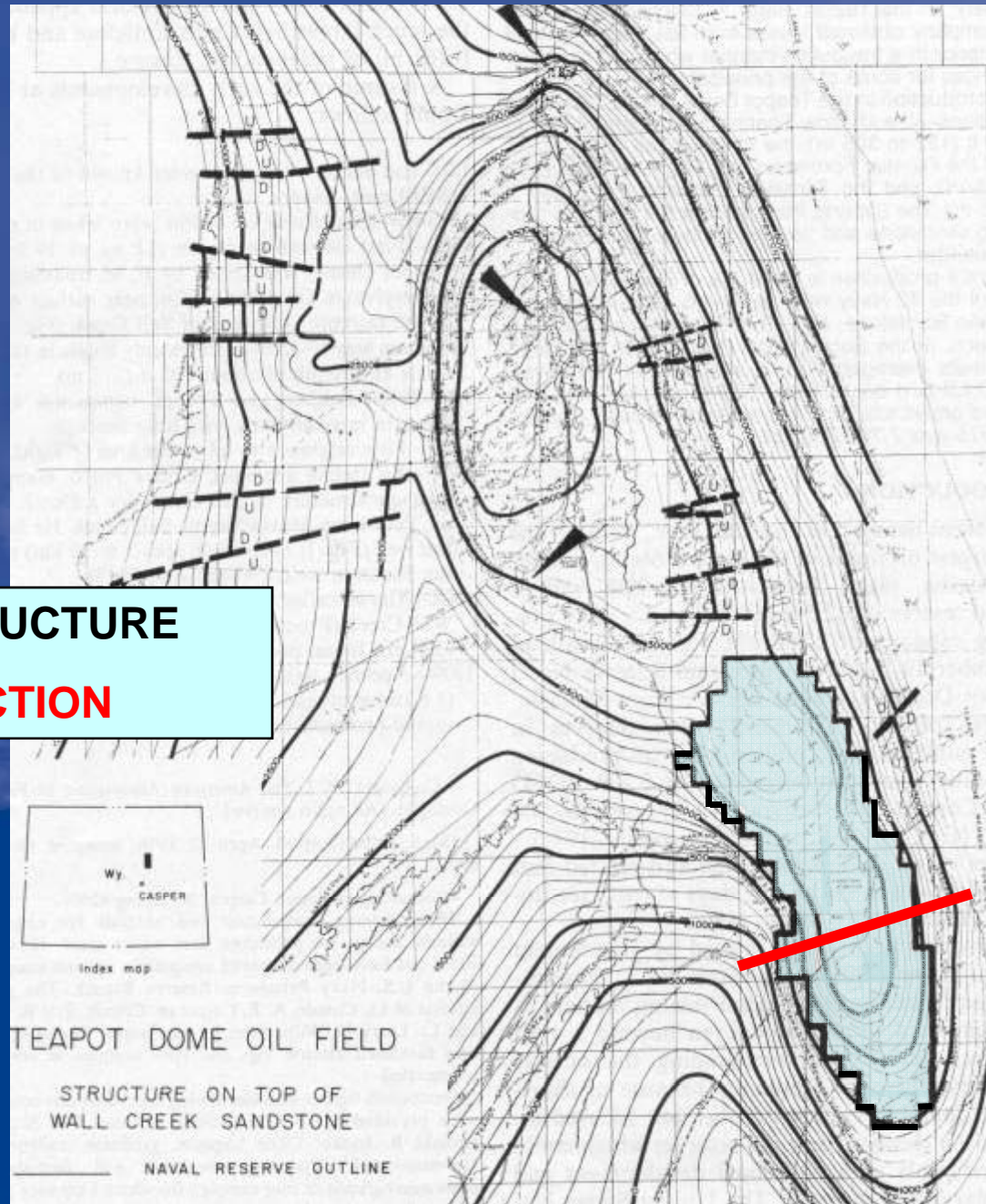


# TENSLEEP STRUCTURE





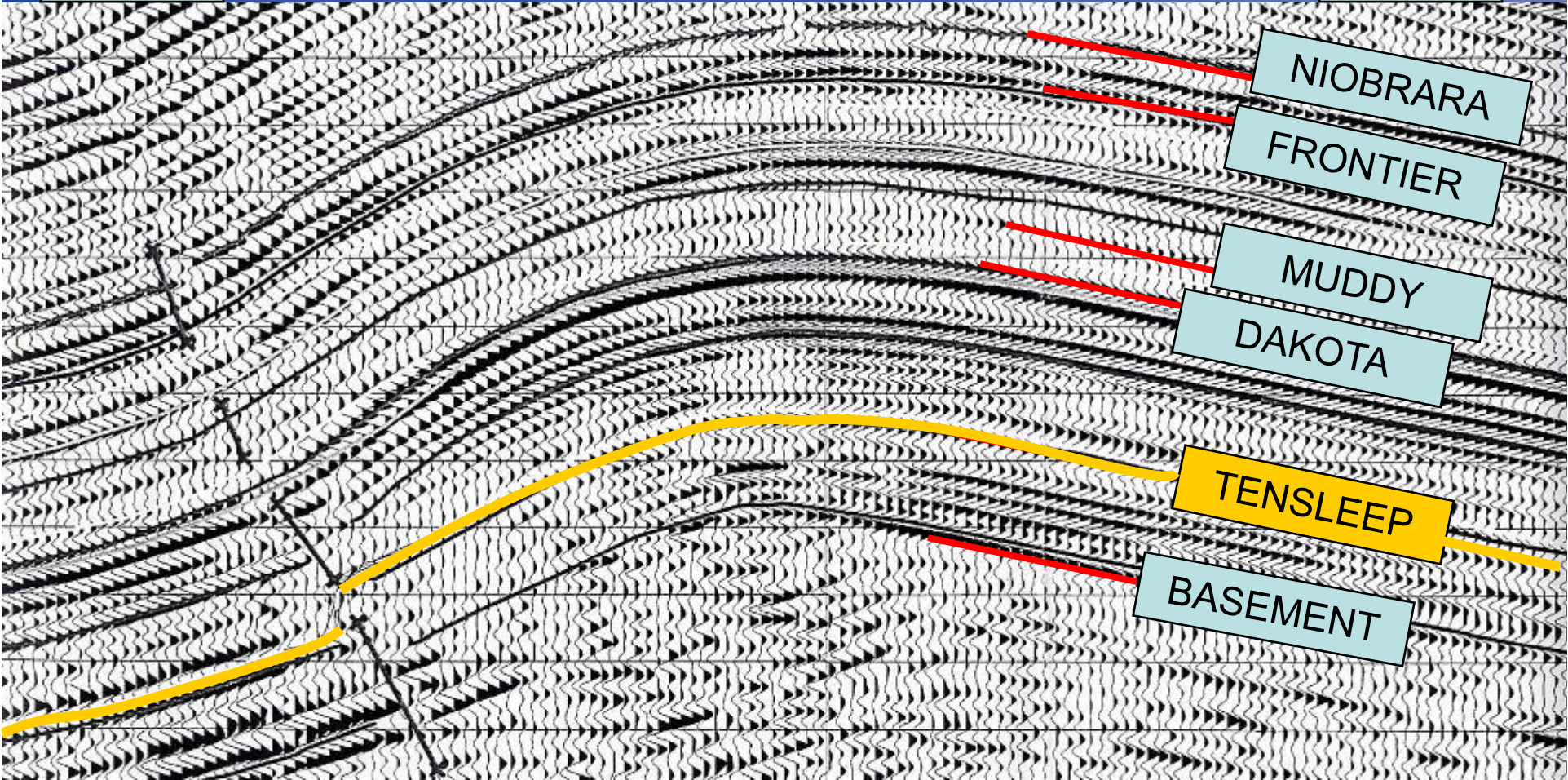
**NPR-3 STRUCTURE**  
**DIP SECTION**



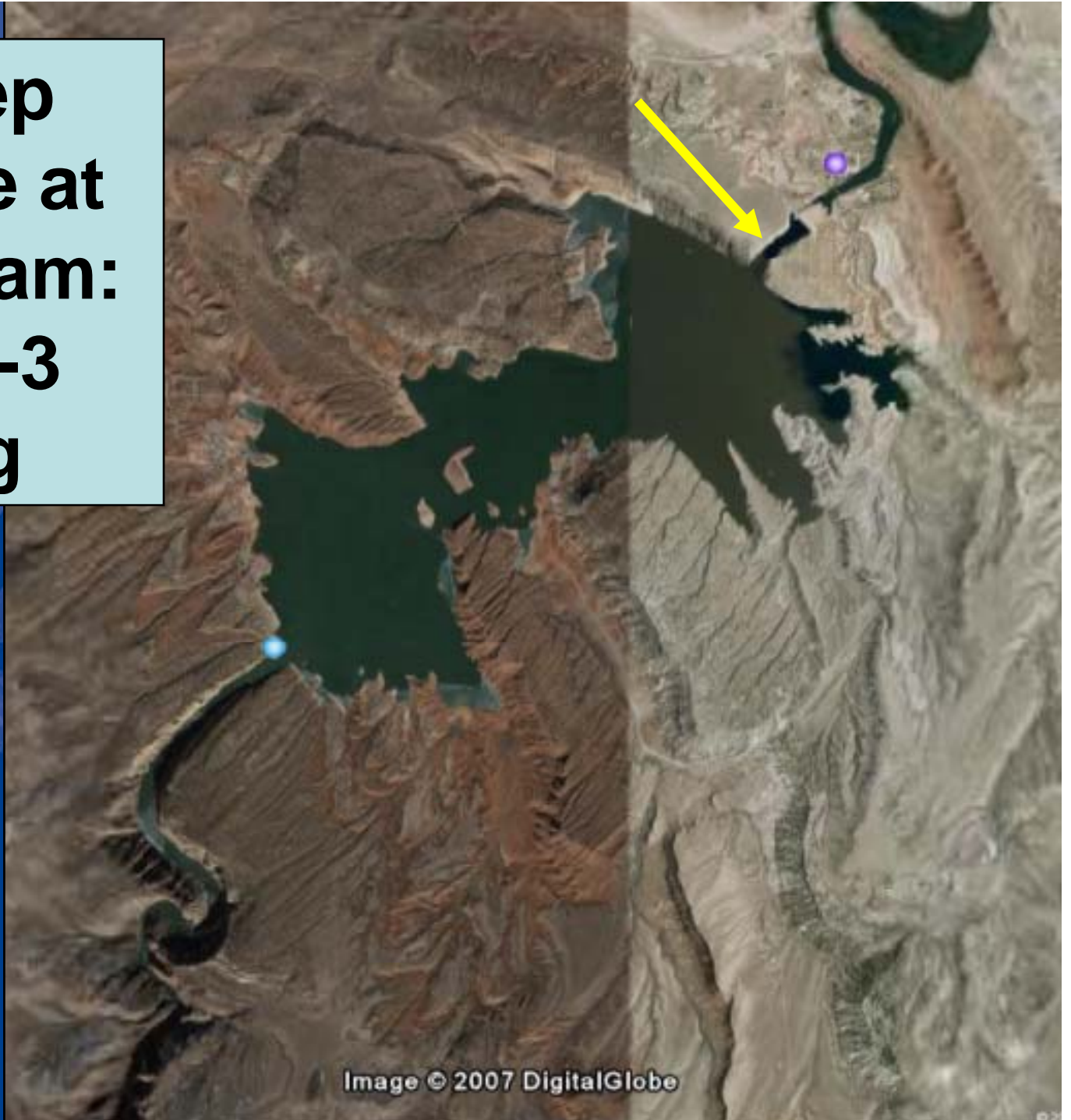
# NPR-3 Dip Section

WEST

EAST

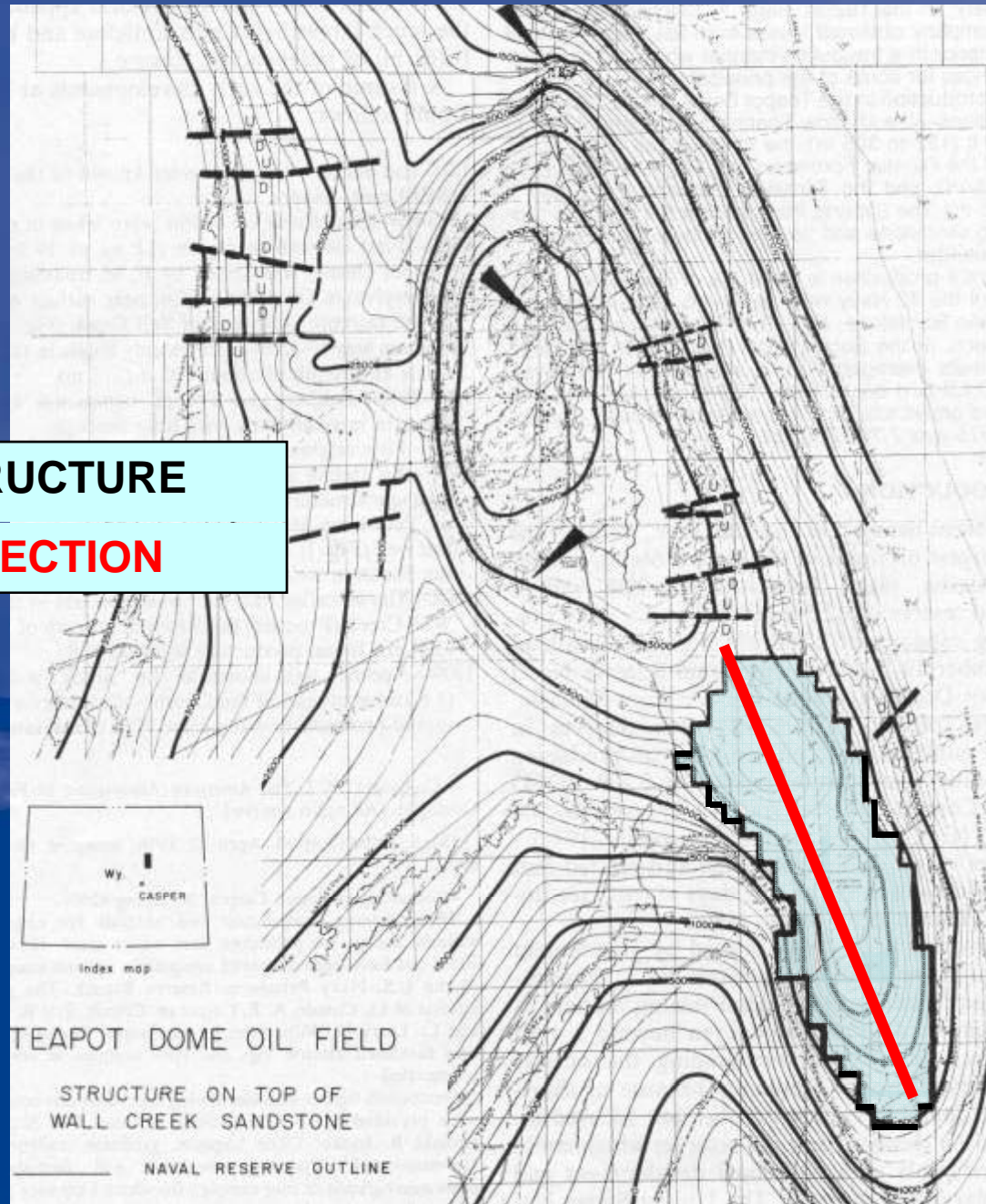


# Tensleep Structure at Alcova Dam: an NPR-3 Analog





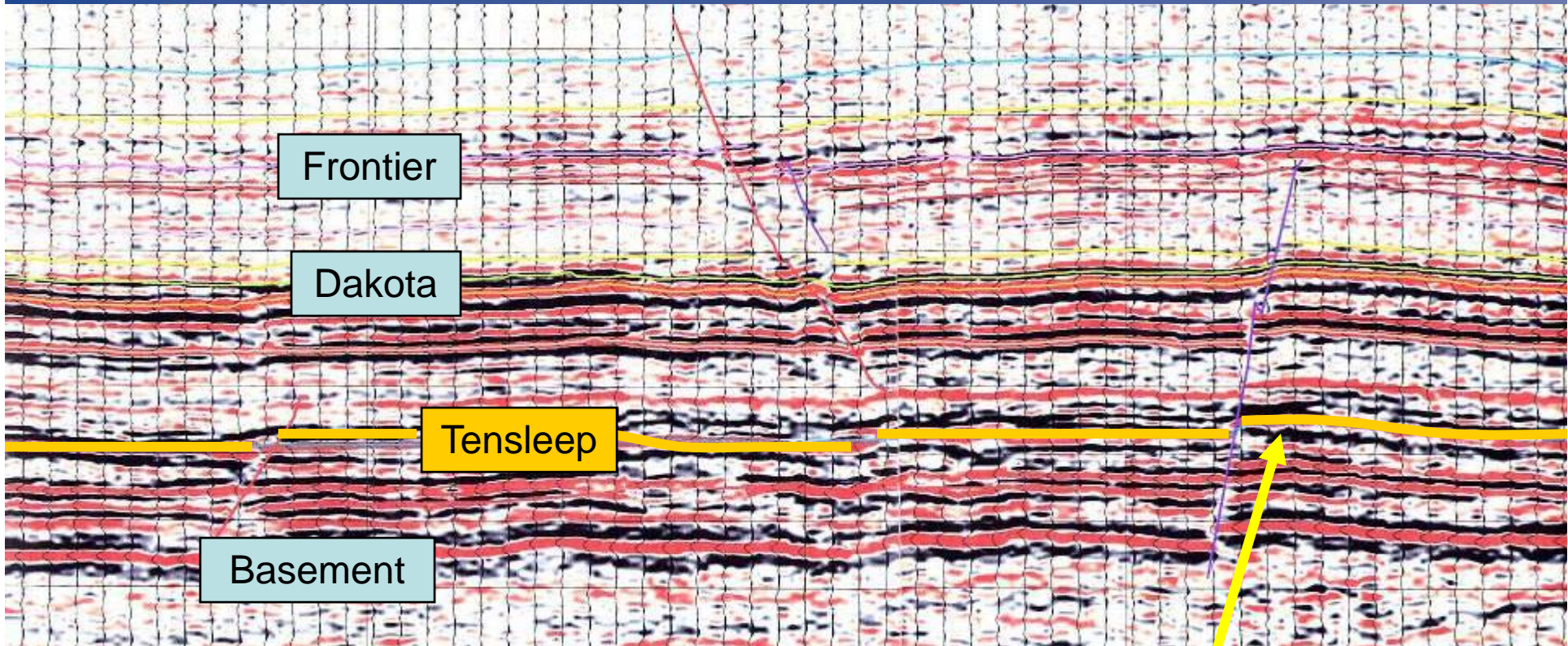
**NPR-3 STRUCTURE**  
**STRIKE SECTION**



# NPR-3 Strike Section

NORTHWEST

SOUTHEAST



Tensleep Formation Reservoir



# TENSLEEP DEPOSITIONAL ENVIRONMENTS

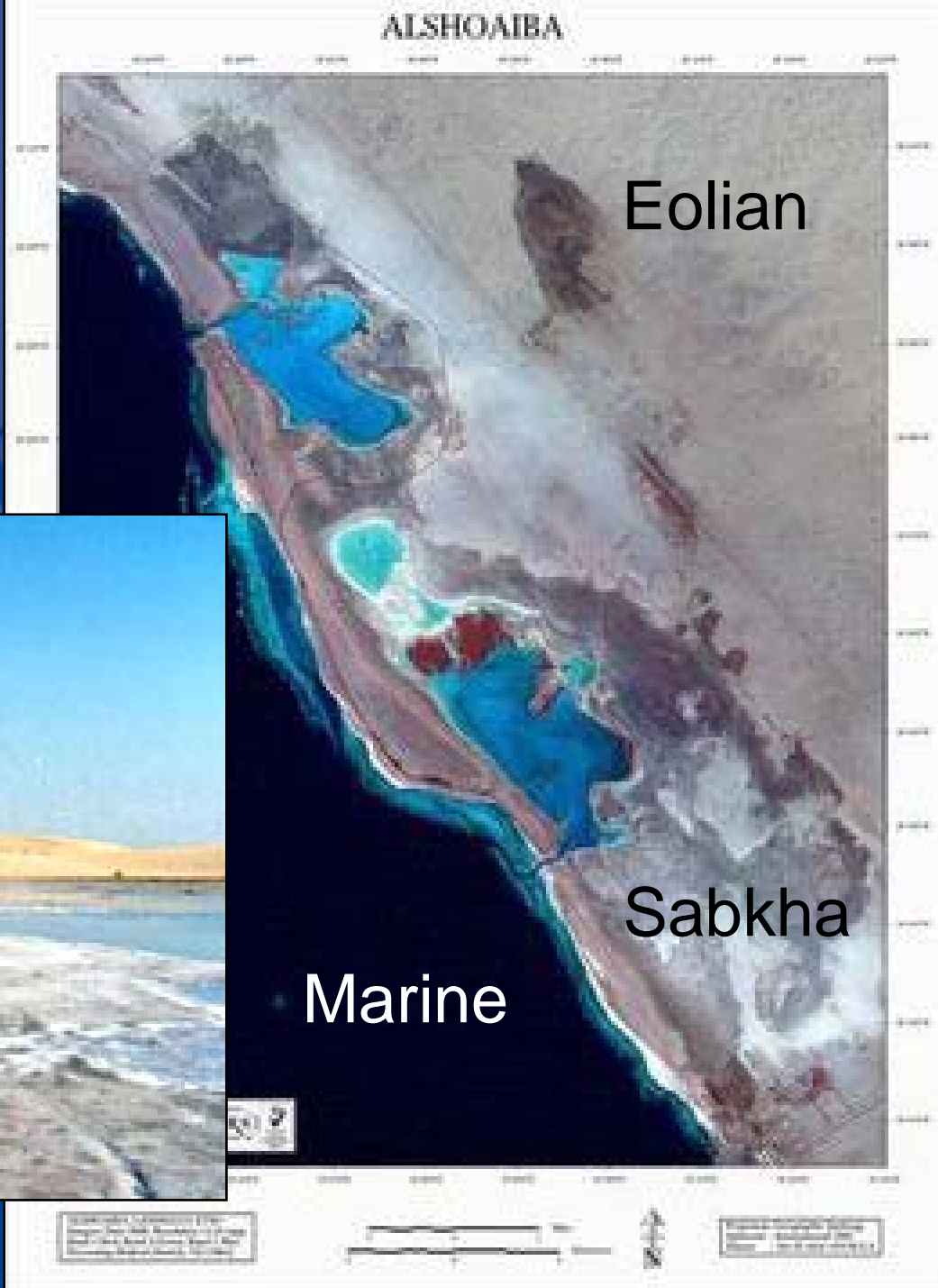


# Late Pennsylvanian Paleogeography





# Modern Day Depositional Analog



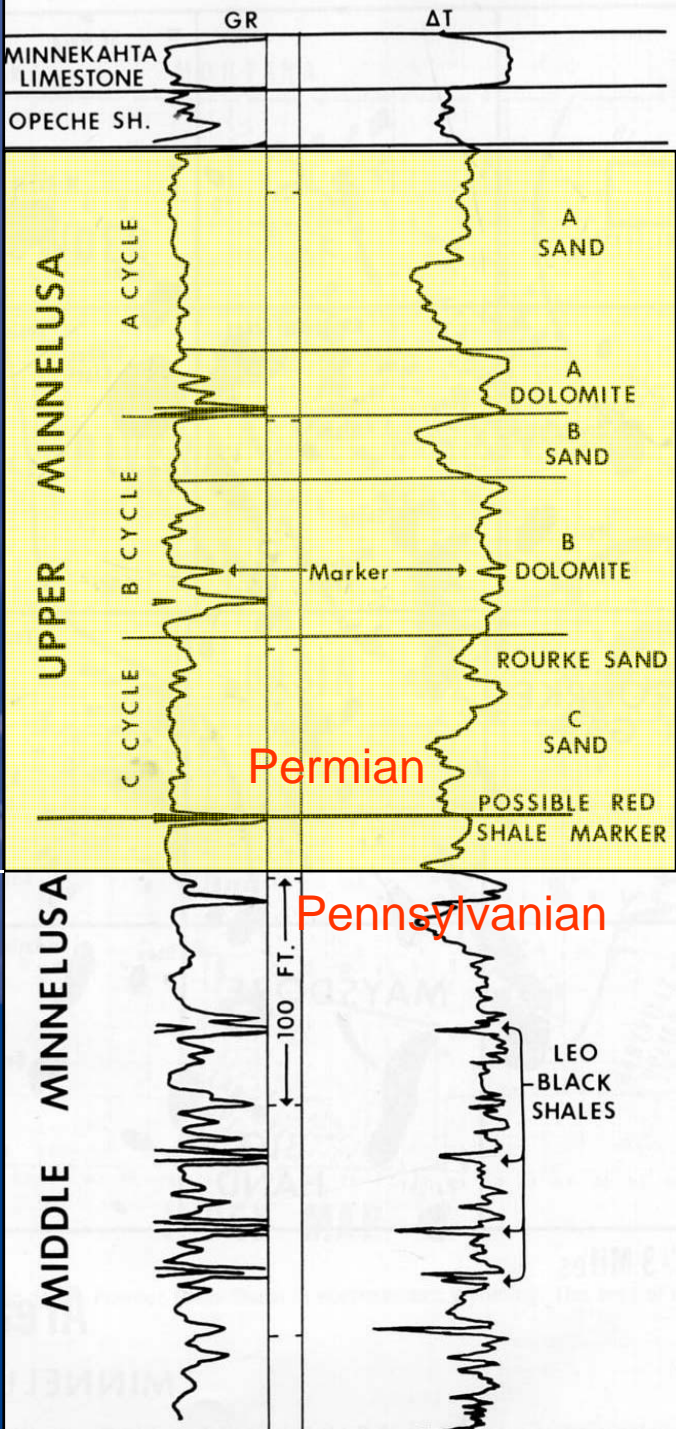
# CORE AND OUTCROP-BASED TENSLEEP STRATIGRAPHIC TERMINOLOGY AT NPR-3



# TYPICAL POWDER RIVER BASIN MINNELUSA STRATIGRAPHY

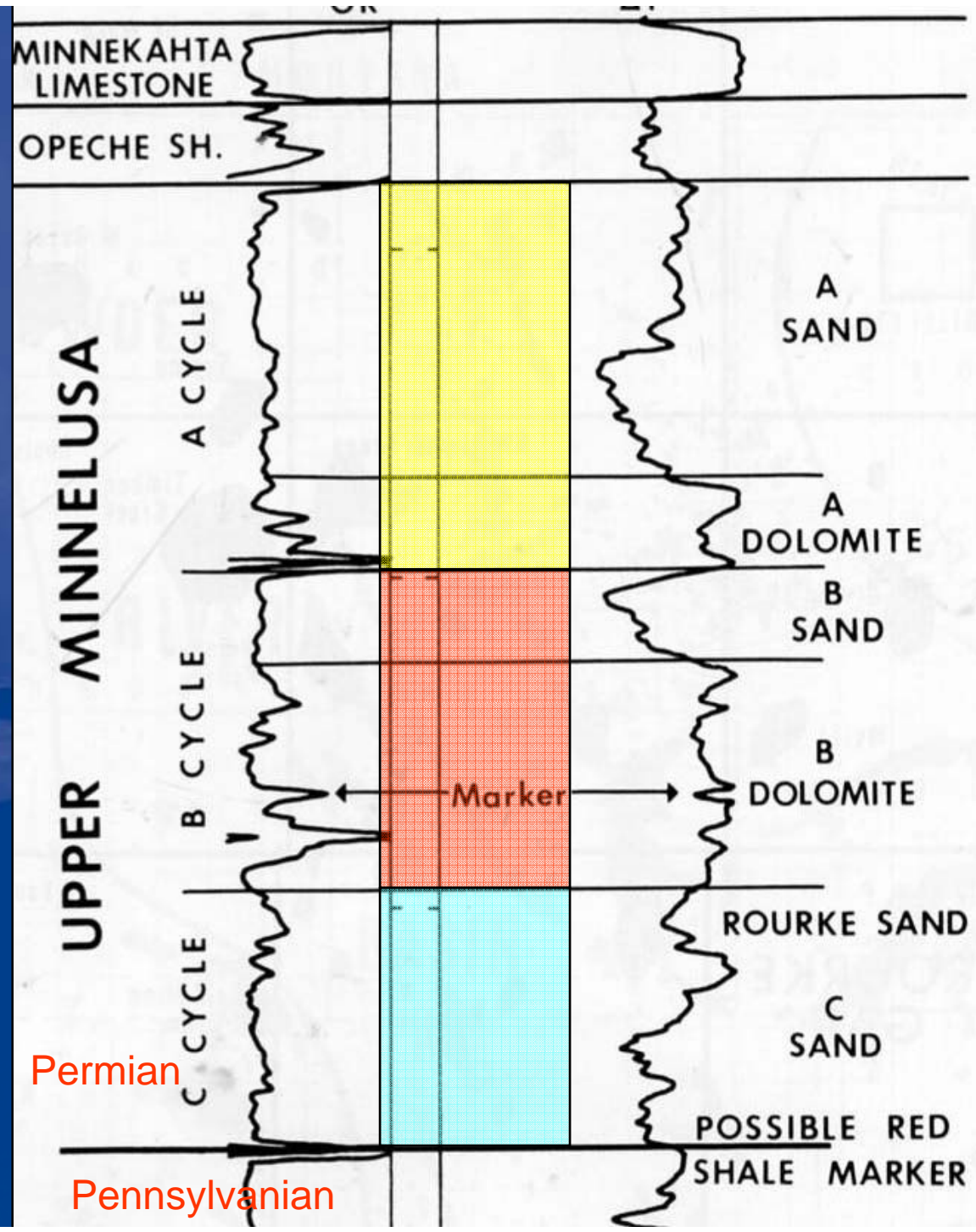
Wolfcampian

Des Moinesian, Missourian, Virgilian (Trotter, 1984)



Type log From George, 1984

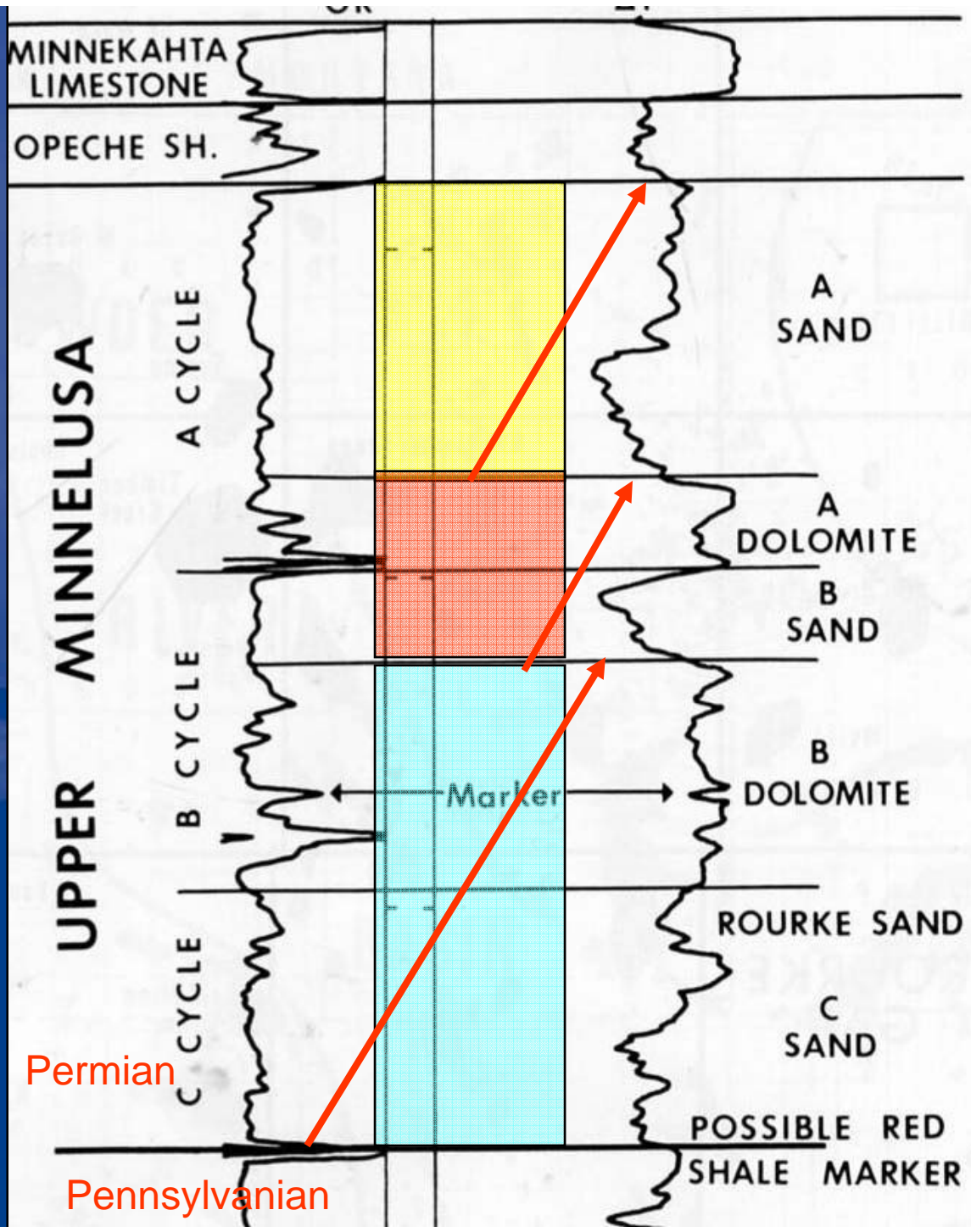
Used by permission.



Permian

Pennsylvanian





Permian

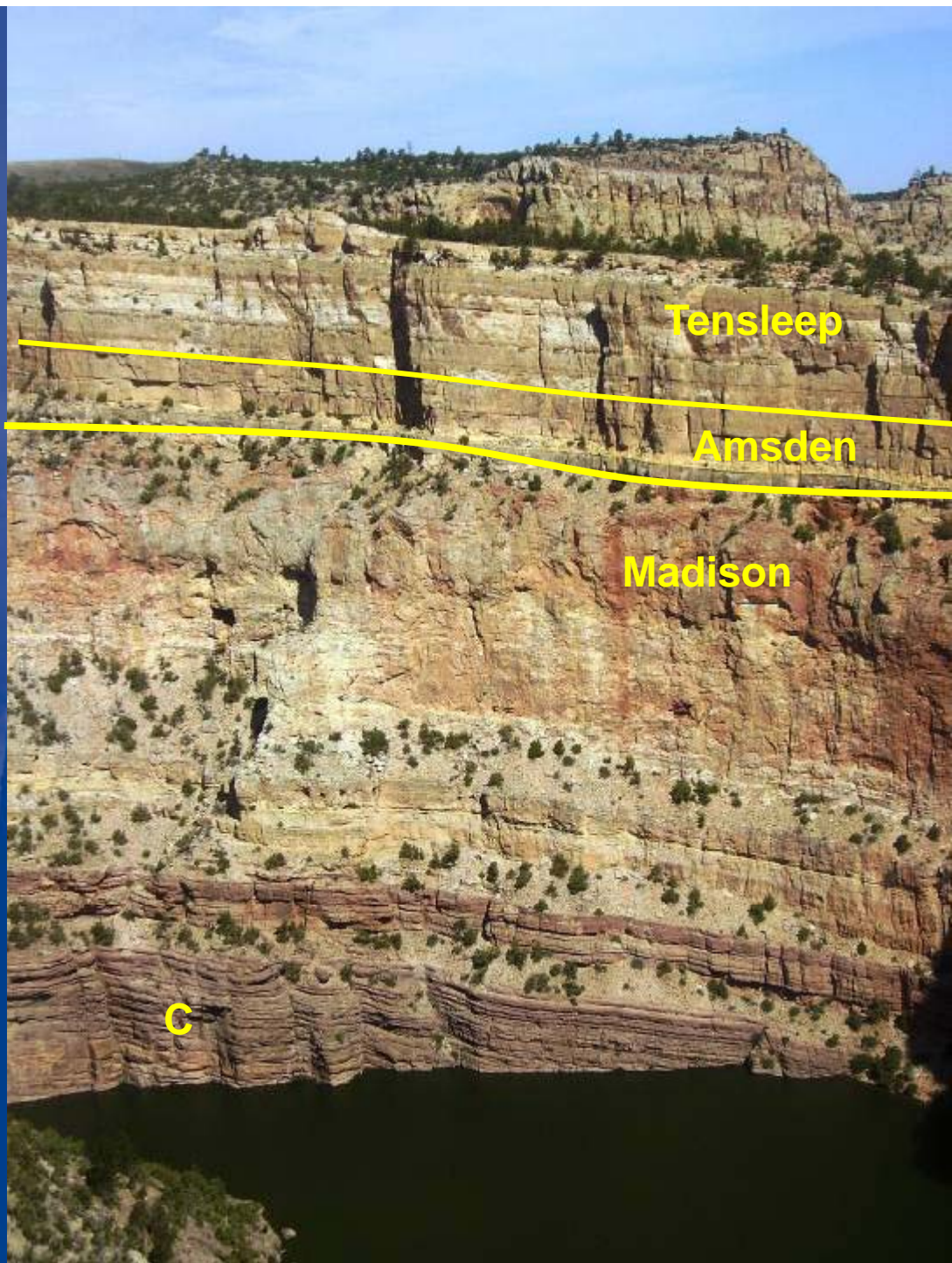
Pennsylvanian

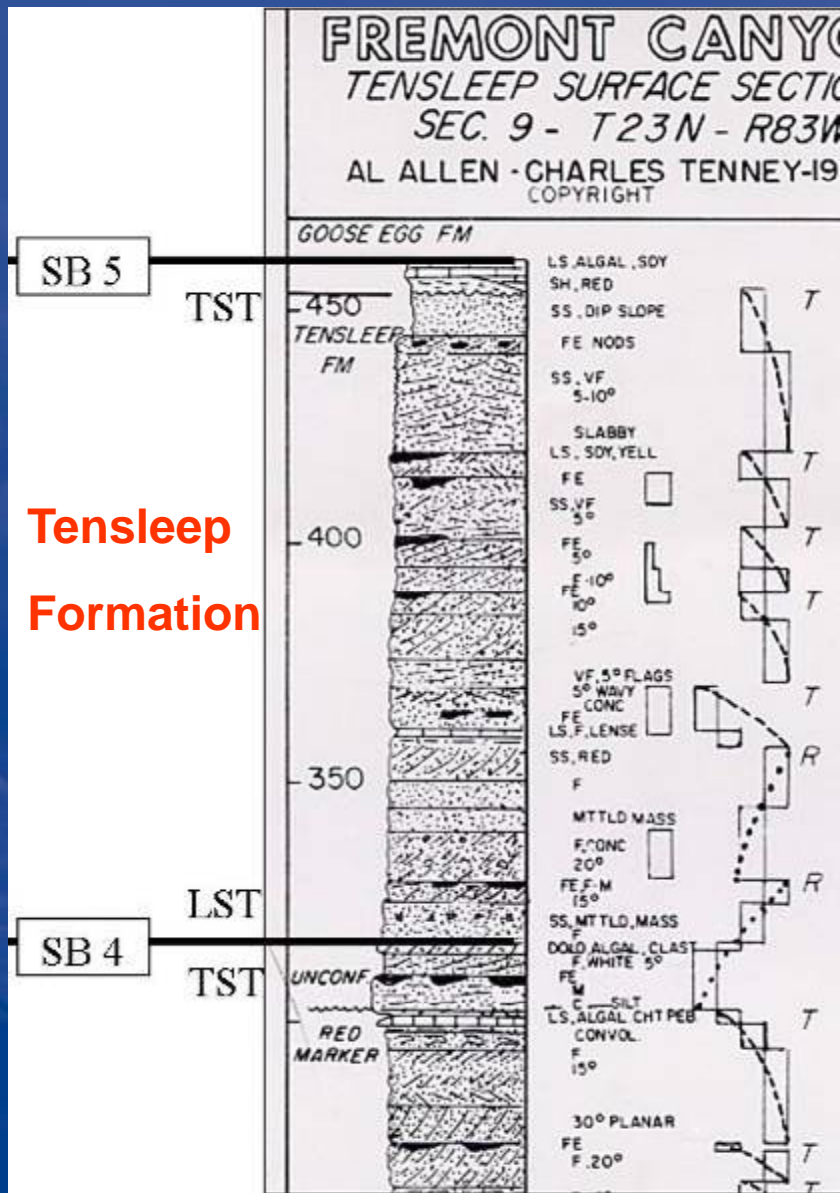


**TENSLEEP  
OUTCROP  
WORK AT  
FREMONT  
CANYON,  
LAKE ALCOVA**



Image © 2007 DigitalGlobe





Tensleep Formation

Tensleep Formation

Permian

Pennsylvanian

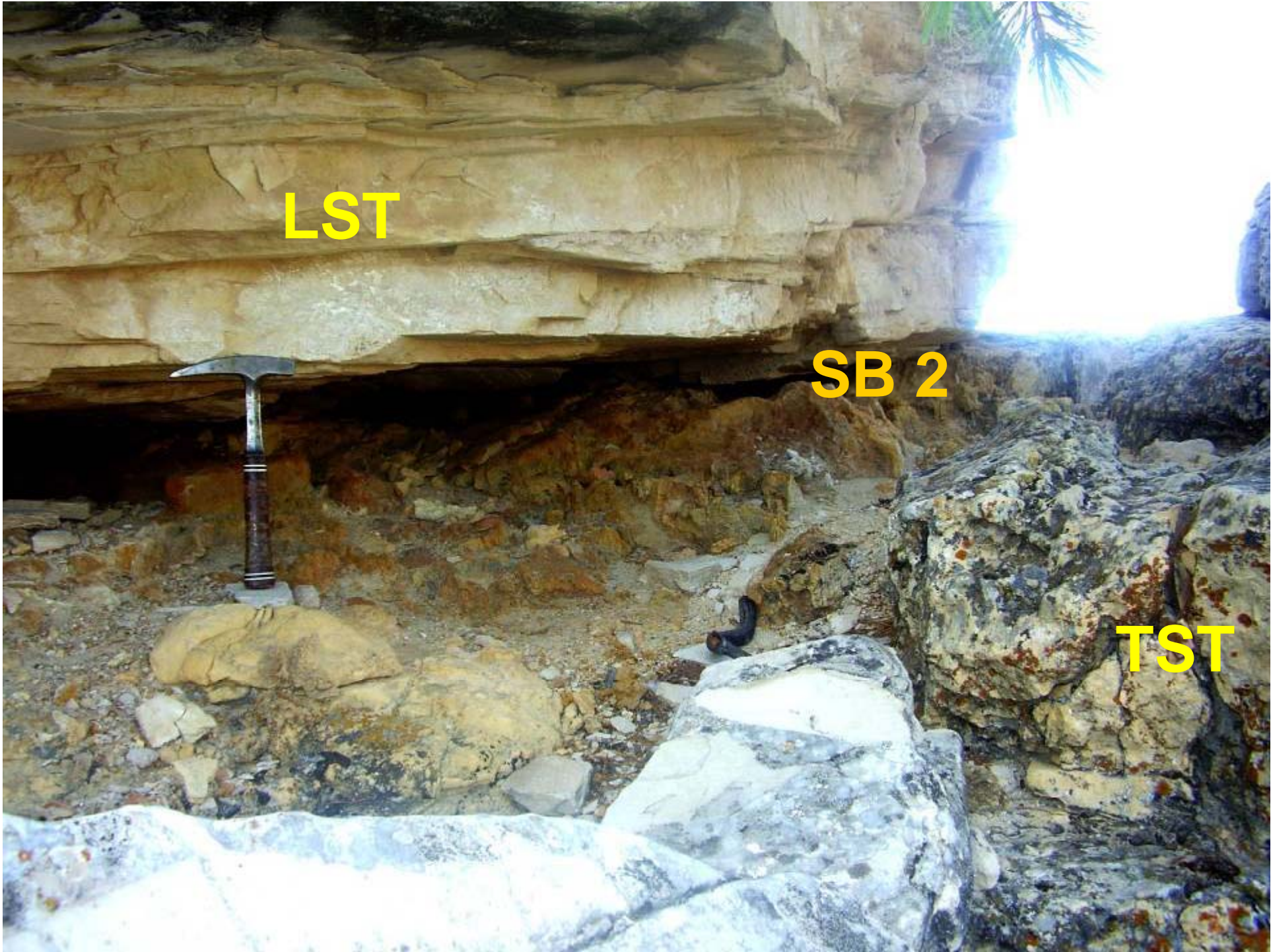
Amsden Formation

Equiv. level of Red Shale Marker



Al Allen and Charles Tenney, 1986  
 Used by permission  
 Modified by Tor H. Nilsen, 2005





LST

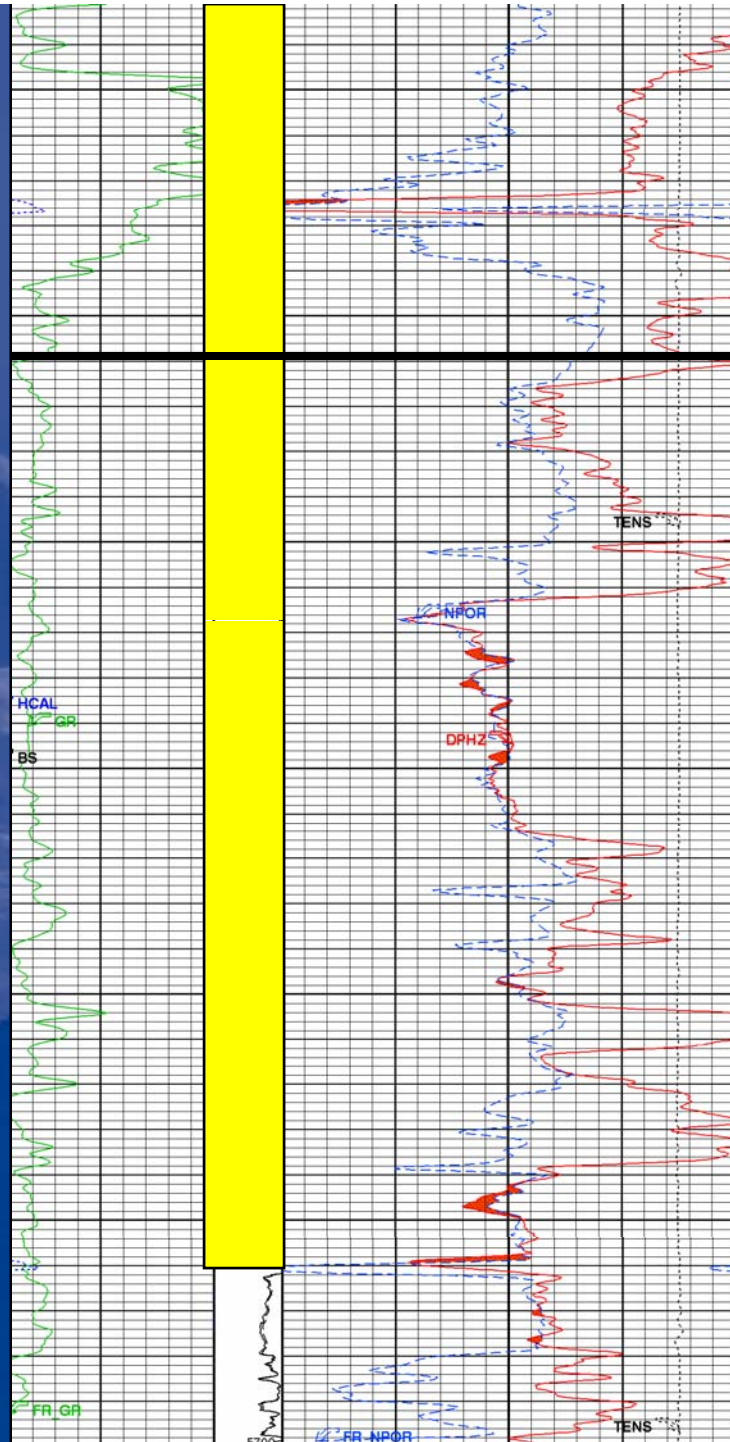
SB 2

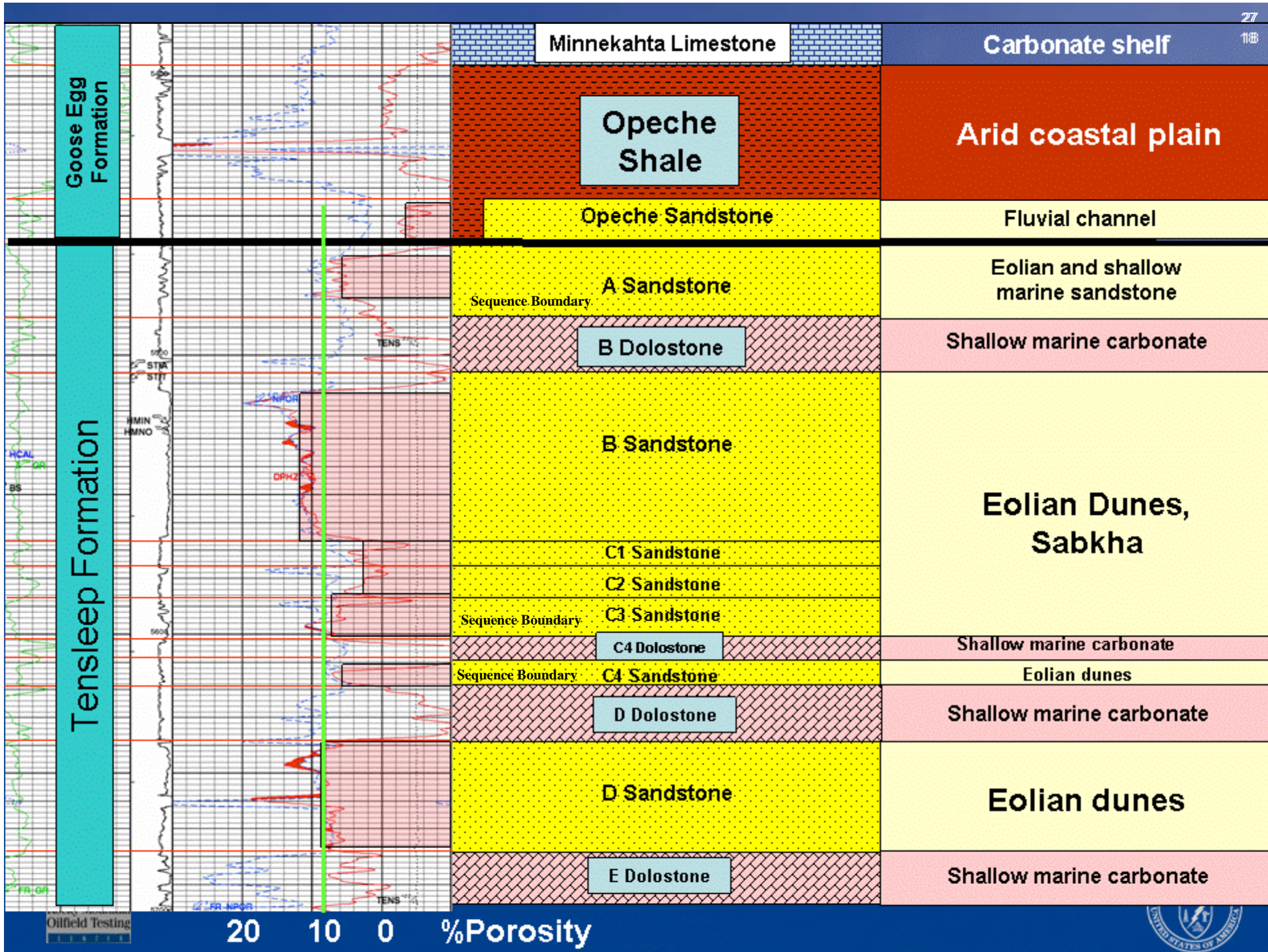
TST

# 48-X-28 N-D POROSITY

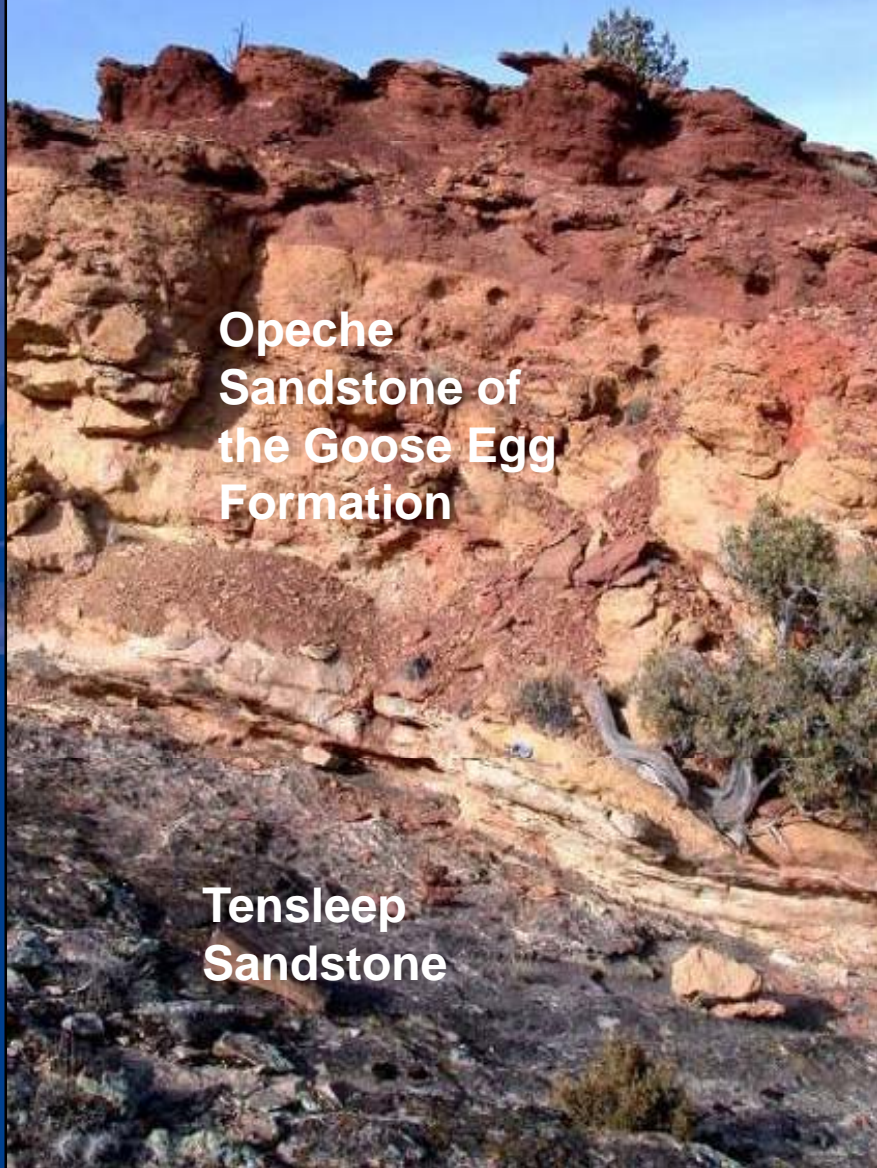
## Cored Interval

### 5300-5653





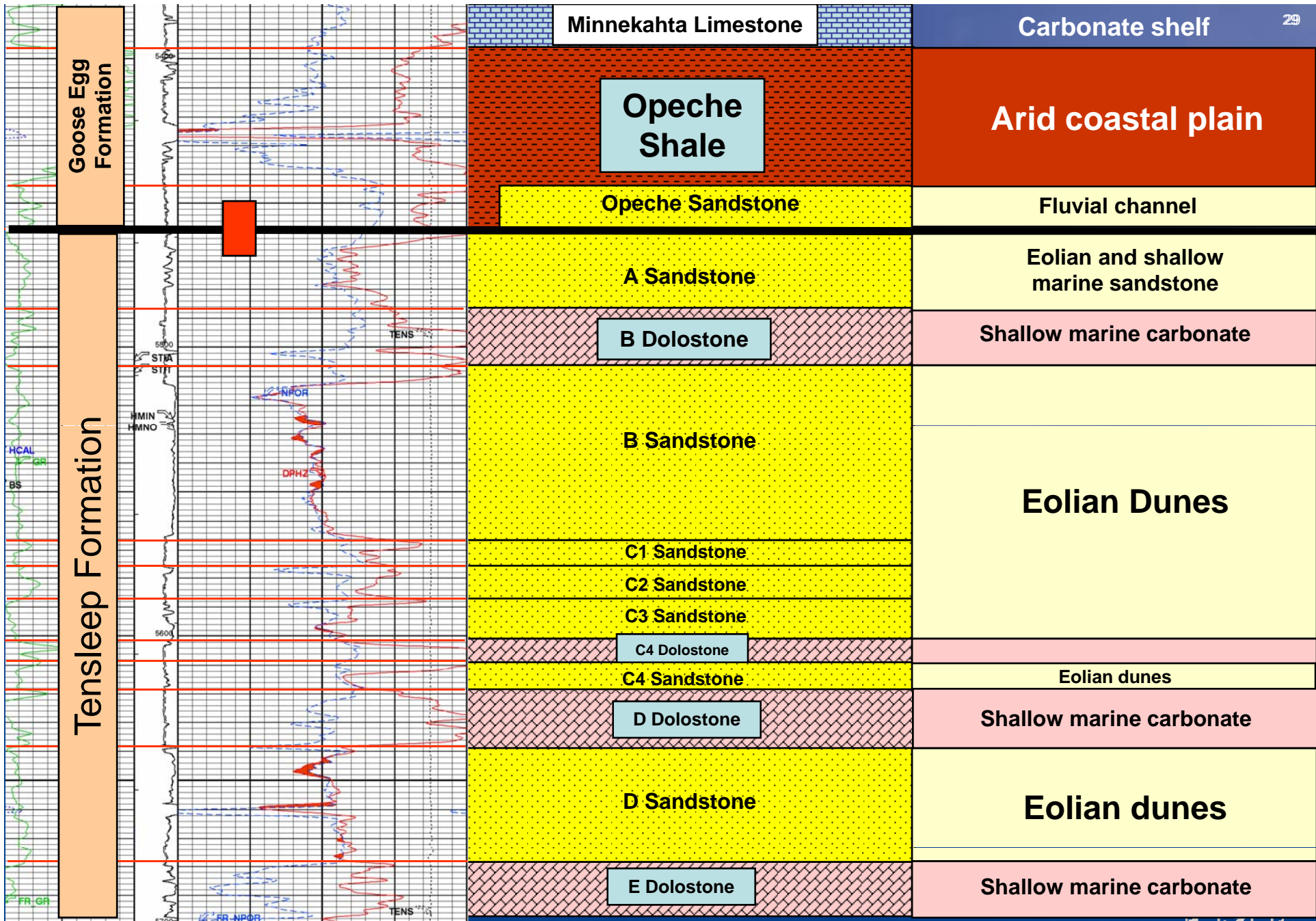
# TENSLEEP CAPROCK CHARACTER



Opeche  
Sandstone of  
the Goose Egg  
Formation

Tensleep  
Sandstone





OMNI

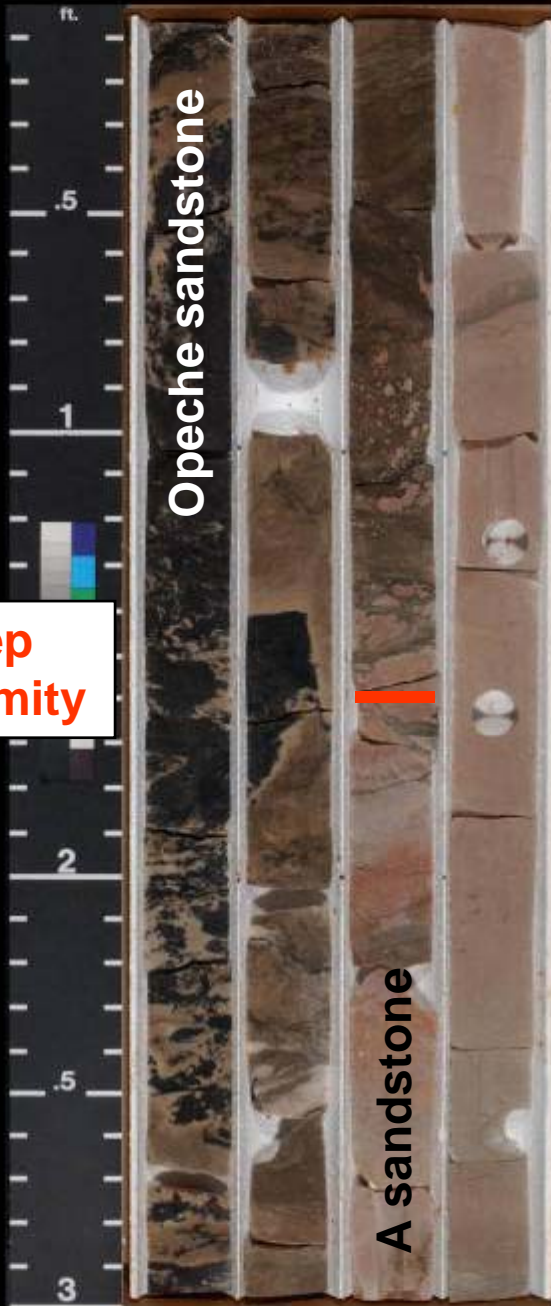
5444 5447 5450 5453

File# W85011

RMOTC/DOE

48X28

Natrona Co., WY



**Tensleep  
Unconformity**

0.0025 md

0.0024 md

0.0069 md

OMNI

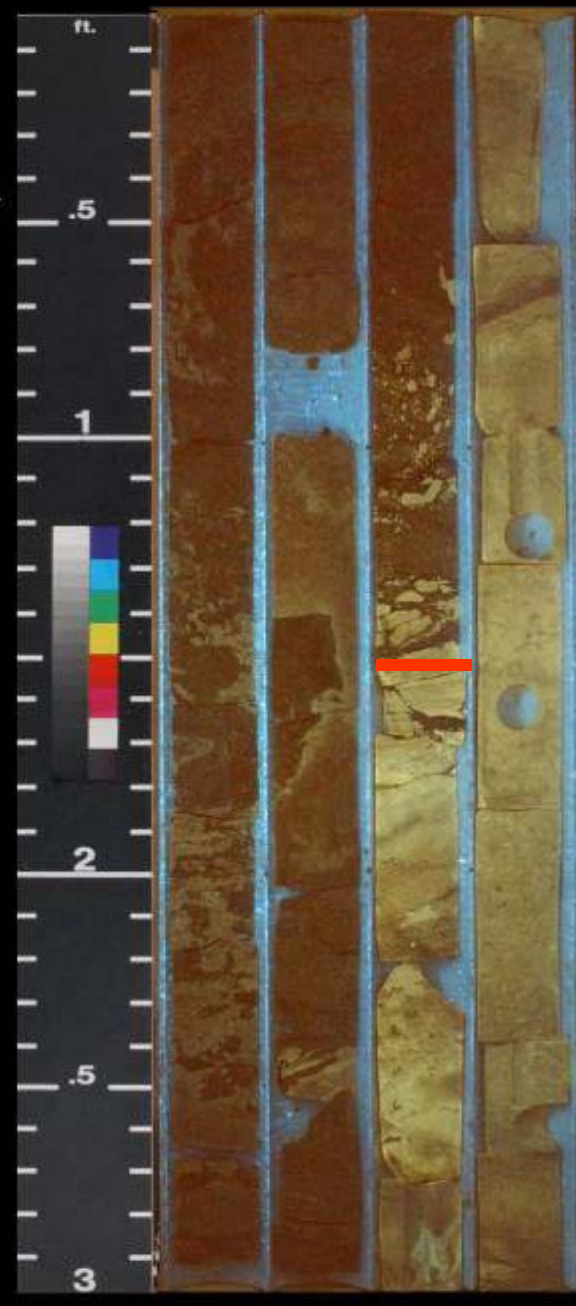
5444 5447 5450 5453

File# W85011

RMOTC/DOE

48X28

Natrona Co., WY



0.0025 md

0.0024 md

0.0069 md

# Benefits of a Revised Tensleep Stratigraphic Hierarchy

- Log lithology models developed for wells not cored,
- Improved correlation among Tensleep wells,
- Improved identification and quantification of lost sections due to faulting,
- Determination of large scale flow units limited by sequence boundaries,
- Significant cap rock quality for CO<sub>2</sub> containment.



Rocky Mountain  
Oilfield Testing

C E N T E R

Thank you

