

# RNAV (GPS) RWY 28

DENVER/CENTENNIAL (APA)

WAAS CH <b>82107</b> <b>W28A</b>	APP CRS <b>280°</b>	Rwy Idg TDZE Apt Elev	<b>4800</b> <b>5813</b> <b>5885</b>
--	------------------------	-----------------------------	---

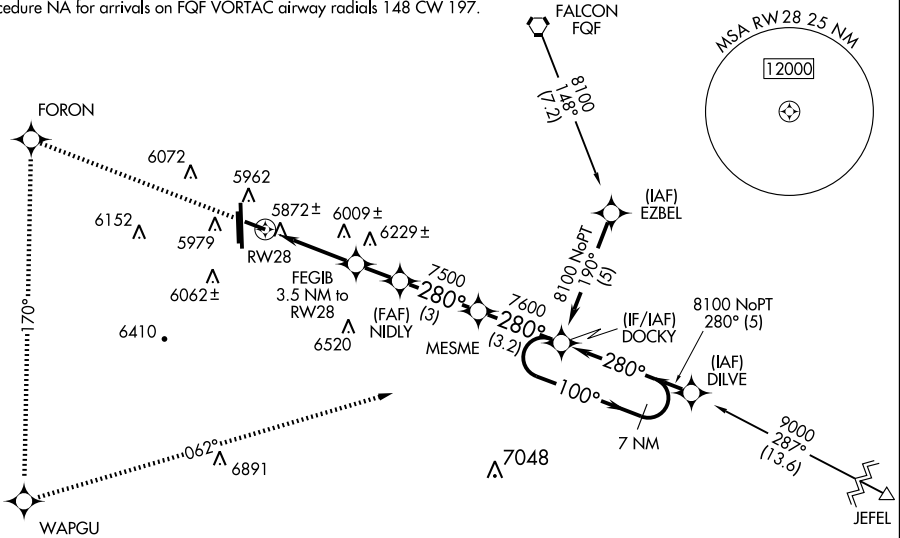
▼ When local altimeter setting not received, use Denver Intl altimeter setting and increase all DA 108 feet and all MDA 120 feet; increase LPV all Cats visibility ¼ mile, increase LNAV/VNAV all Cats visibility ½ mile, LNAV Cats C/D visibility ¼ mile and circling Cat C visibility ½ mile, and Cat D visibility ¼ mile.

▲ For uncompensated Baro-VNAV systems, LNAV/VNAV NA below -26°C (-14°F) or above 37°C (98°F). VDP and Baro VNAV NA when using Denver Intl altimeter setting. Visibility reduction by helicopters NA. DME/DME RNP-0.3 NA.

MISSED APPROACH: Climb to 9000 direct FORON and left turn via 170° track to WAPGU and left turn via 062° track to DOCKY and hold.

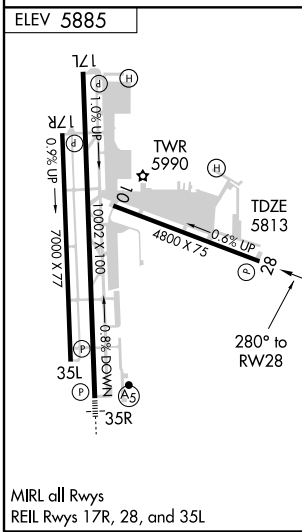
ATIS <b>120.3</b>	DENVER APP CON <b>132.75 269.3</b>	<b>CENTENNIAL TOWER</b> <b>118.9</b>	GND CON <b>121.8</b>	CLNC DEL <b>128.6</b>
----------------------	---------------------------------------	---	-------------------------	--------------------------

Procedure NA for arrivals on FQG VORTAC airway radials 148 CW 197.



SW-1, 12 FEB 2009 to 12 MAR 2009

SW-1, 12 FEB 2009 to 12 MAR 2009



	9000	FORON	WAPGU	DOCKY	7 NM Holding Pattern
	↑	170° track	062° track		
*LNAV only					
		RW28	NIDLY	MESME	DOCKY
		3.5 NM to RW28	7500	7600	8100
		*1 NM to RW28	6940*	7500	100° → 280°
					VGSI and RNAV glidepath not coincident.
					GS 3.00° TCH 30
	1 NM	2.5 NM	1.7 NM	3 NM	3.2 NM
CATEGORY	A	B	C	D	
LPV DA		6104-1¼	291 (300-1¼)		
LNAV/VNAV DA		6152-1¼	339 (300-1¼)		
LNAV MDA	6260-1	447 (400-1)	6260-1¼ 447 (400-1¼)	6260-1½ 447 (400-1½)	
CIRCLING	6440-1	555 (600-1)	6440-1½ 555 (600-1½)	6560-2¼ 675 (700-2¼)	