

# KENNEBUNK FOUR ARRIVAL

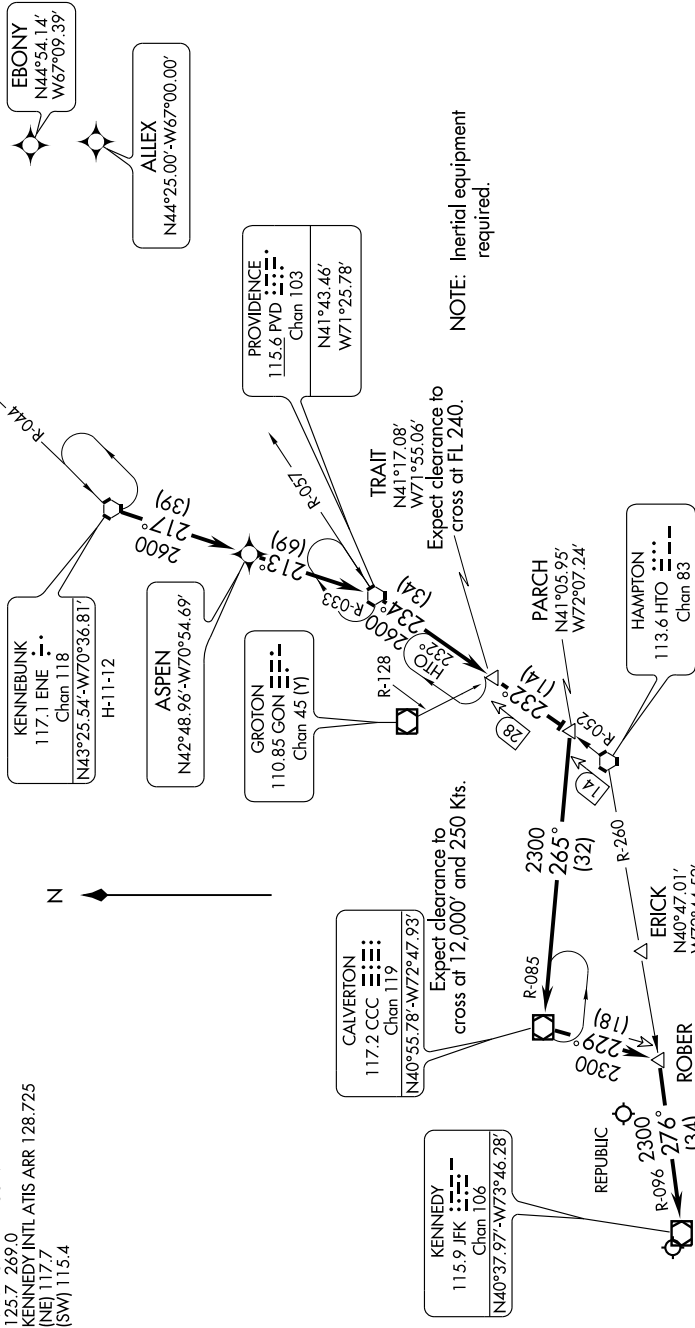
ST-610 (FAA)

NEW YORK, NEW YORK

NE-2, 12 FEB 2009 to 12 MAR 2009

... From over ENE VORTAC, via direct ASPEN WPT, via direct PVD VORTAC. Then via PVD R-234 to TRAIT INT/WPT. Then via HTO R-052 to PARCH INT. Then via CCC R-085 to CCC VOR/DME. Then via CCC R-229 to ROBER INT. Direct JFK VOR/DME. Expect radar vectors to final approach course.

NEW YORK APP CON  
125.7 269.0  
KENNEDY INTL ATIS ARR 128.725  
(NE) 117.7  
(SW) 115.4



NE-2, 12 FEB 2009 to 12 MAR 2009

# KENNEBUNK FOUR ARRIVAL

NEW YORK, NEW YORK

NOTE: Chart not to scale.