



Transportation Packaging Quick Facts

Office of Environmental Management
National Transportation Program



Cask: GNS-16

Manufacturer: GNS Gesellschaft für Nuklear-Service GmbH

Certification: German Certification D/4326/B(U)F-85, Revision 1 (expires June 30, 2002);
U.S. Department of Transportation (DOT) Certification USA/0551/B(U)F-85, Revision 2
(expires June 30, 2002)

General Description: The GNS-16 cask consists of a cylindrical container body produced in sandwich design. The top of the shaft opening is sealed leak tight by the primary lid with its bolted joints and elastomer seals. Above the primary lid, there is a protective plate with bolted joint. The container body consists of the component's inner liner with welded stainless-steel bottom, outer wall with welded bottom plate, and the head ring, to which the inner liner and outer wall are welded. The space between the inner liner and the outer wall is filled with lead.

Packaging Type: B(U)

Gross Weight: 33,600 pounds (15,241 kilograms) loaded

Overall Dimensions: Height 60.4 inches (153.5 centimeters), [including impact limiters - 81.7 inches (208 centimeters)], Diameter 47.6 inches (120 centimeters), [including impact limiters - 70.9 inches (180 centimeters)]

Mode of Transport: Truck/Rail

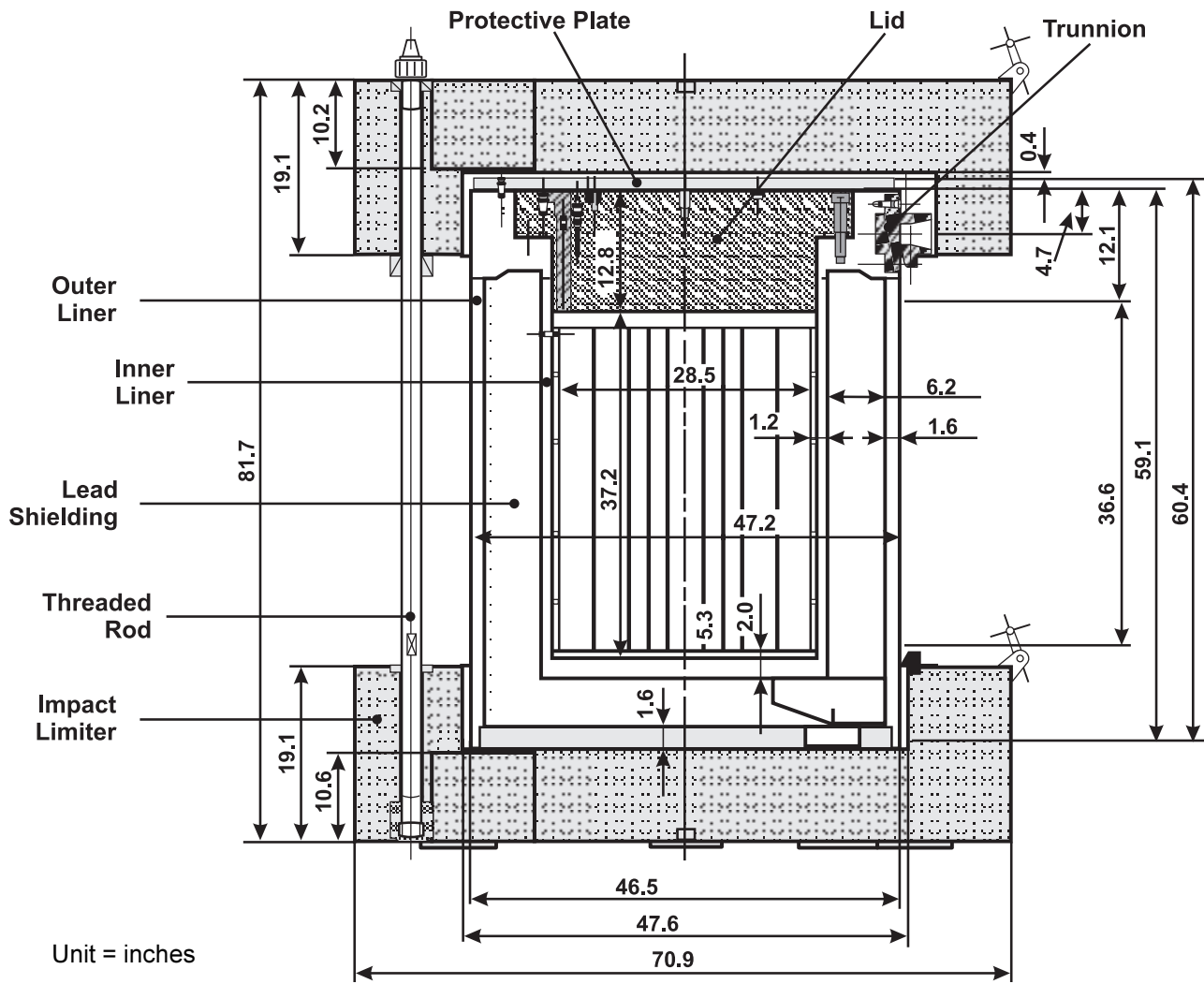
Use: The GNS-16 currently is authorized for transport of the following types of spent nuclear fuel: box-shaped material test reactor (MTR) fuel; tubular MTR; and cylindrical Training, Research, Isotope production, General Atomics (TRIGA) fuel. Two GNS-16 casks are available for use.

Frequency of Use: Approximately 2 shipments per year in the U.S.

Loading Process: Wet immersion or dry, using the dry transfer system

Owner: Nuclear Cargo and Services
Hanau, Germany





GNS-16 Shipping Cask

Additional information on DOE's National Transportation Program may be obtained from:

National Transportation Program
 U.S. Department of Energy
 Albuquerque Operations Office
 P.O. Box 5400, MS SC-5
 Albuquerque, NM 87185-5400

Phone: 505-845-6134
 Fax: 505-845-5508

Website:
<http://www.ntp.doe.gov/>

DOE Center for Environmental
 Management Information
 P.O. Box 23769
 Washington, DC 20026-3769

1-800-7EM-DATA
 1-800-736-3282

Website:
<http://www.em.doe.gov/>

Transportation Resource Exchange Center
 ATR Institute
 University of New Mexico
 1001 University Blvd., SE
 Albuquerque, NM 87106-4342

Phone: 1-877-287-TREX (8739)
 Fax: 505-246-6001
 email: trex@unm.edu

Website:
<http://www.trex-center.org/>