

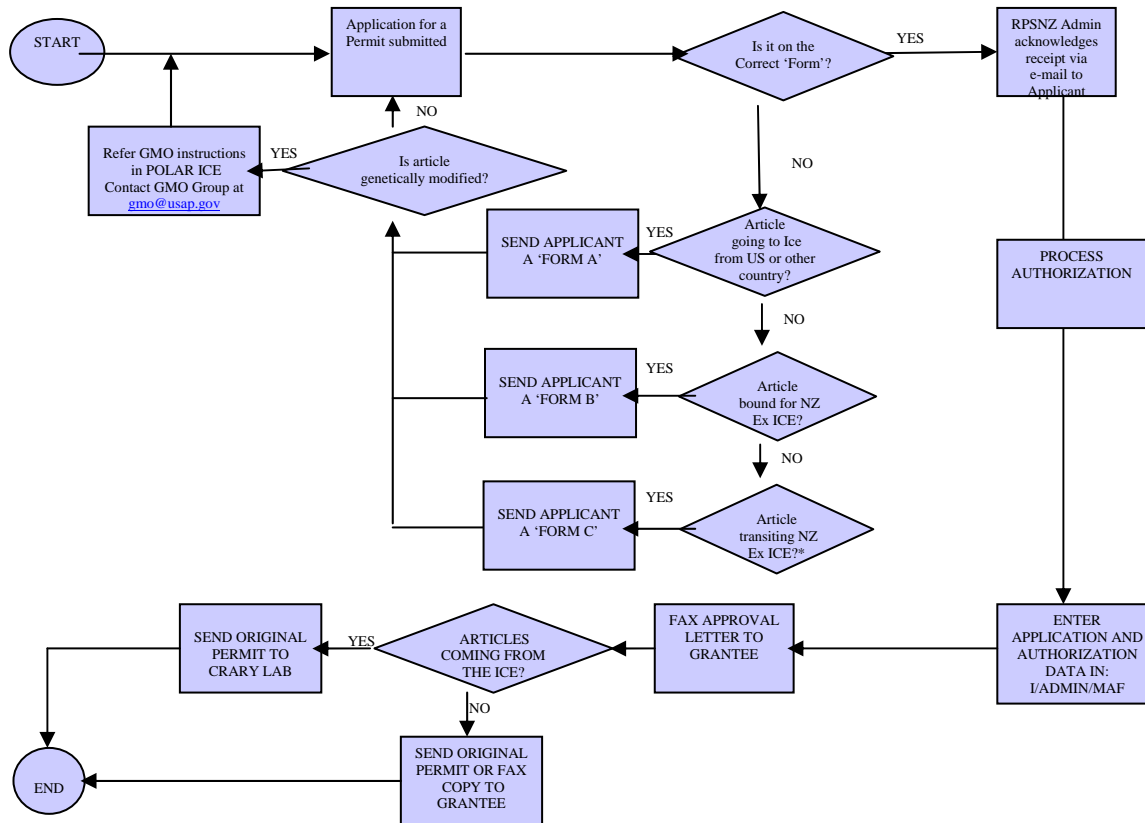
# Raytheon Technical Services Company Polar Services

## PERMITS

Individuals and groups traveling to Antarctica are responsible for obtaining any and all required permits. An initial assessment of permit needs should be made by the individual (or group) based on planned itinerary, the nature of interactions with wildlife, materials to be handled and shipped to or from Antarctica, and the need to enter Antarctic Specially Protected Areas.

The National Science Foundation (NSF), the National Marine Fisheries Service (NOAA/NMFS), U.S. Department of Agriculture (USDA), U.S. State Department (DOS), New Zealand Environmental Risk Management Authority (ERMA), and the New Zealand Ministry of Agriculture and Forestry (MAF) have regulations governing the taking of marine mammals, plants, introduction of non-indigenous species, importation and exportation, transshipment of specimens, genetically modified organisms (GMO), and research vessel clearances for work in foreign exclusive economic zones.

The following flowchart outlines New Zealand permit processing.



**NOTES:**

\* Articles transiting NZ on the vessel that are not being landed do not require a permit.

## Environmental Risk Management Authority (ERMA)

### Definition of Genetically Modified Organism

Under the Hazardous Substances and New Organisms (HSNO) Act of 1996, a Genetically Modified Organism is any organism in which any of the genes or other genetic material have been modified by in vitro techniques or are inherited or otherwise derived through any number of replications, from any genes or other genetic material which has been modified by in vitro techniques.

The New Zealand Environmental Risk Management Authority (ERMA) controls the movement of new and genetically modified organisms into and through New Zealand.

If any of your specimens/samples meet the ERMA definition of a Genetically Modified Organism (above), please complete the attached questionnaire (ERMA Application) and forward it to the **GMO Group** at Raytheon Polar Services (NZ), [gmo@usap.gov](mailto:gmo@usap.gov). Due to the time required to process applications to carry GMOs, notification must be given at least 12 weeks prior to deployment.

PERMIT	LEAD TIME
Antarctic Conservation Act (ACA)	12 weeks
Marine Mammal Protection Act (MMPA)	32 weeks
U.S. Department of Agriculture Permit	16 weeks
New Zealand Ministry of Agriculture and Forestry Form A	4 weeks
New Zealand Ministry of Agriculture and Forestry Form B	4 weeks
New Zealand Ministry of Agriculture and Forestry Form C	4 weeks
New Zealand Environmental Risk Management Authority (ERMA)	12 weeks