

**Estimated Cases of Dementia in VA Patient Population  
All Levels of Severity**

**FY 2002**

<b>Ages</b>	<b>Middle</b>	<b>Total Low</b>	<b>High</b>
<b>65-84</b>	66,416	53,319	78,847
<b>85+</b>	24,205	18,450	29,388
<b>Total</b>	90,621	71,769	108,235

**FY 2003**

<b>Ages</b>	<b>Middle</b>	<b>Total Low</b>	<b>High</b>
<b>65-84</b>	71,137	57,109	84,452
<b>85+</b>	32,701	24,927	39,704
<b>Total</b>	103,838	82,036	124,156

**FY 2004**

<b>Ages</b>	<b>Middle</b>	<b>Total Low</b>	<b>High</b>
<b>65-84</b>	72,880	58,508	86,520
<b>85+</b>	40,896	31,173	49,653
<b>Total</b>	113,775	89,681	136,174

**FY 2005**

<b>Ages</b>	<b>Middle</b>	<b>Total Low</b>	<b>High</b>
<b>65-84</b>	70,591	56,671	83,804
<b>85+</b>	48,167	36,716	58,482
<b>Total</b>	118,758	93,386	142,286

**FY 2006**

<b>Ages</b>	<b>Middle</b>	<b>Total Low</b>	<b>High</b>
<b>65-84</b>	70,909	56,926	84,180
<b>85+</b>	57,249	43,638	69,509
<b>Total</b>	128,157	100,564	153,689

**FY 2007**

<b>Ages</b>	<b>Middle</b>	<b>Total Low</b>	<b>High</b>
<b>65-84</b>	71,028	57,022	84,323
<b>85+</b>	66,730	50,865	81,020
<b>Total</b>	137,758	107,887	165,343

**FY 2008**

<b>Ages</b>	<b>Middle</b>	<b>Total Low</b>	<b>High</b>
<b>65-84</b>	71,538	57,431	84,927
<b>85+</b>	74,697	56,938	90,694
<b>Total</b>	146,235	114,369	175,621

**FY 2009**

<b>Ages</b>	<b>Middle</b>	<b>Total Low</b>	<b>High</b>
<b>65-84</b>	71,986	57,791	85,460
<b>85+</b>	81,636	62,227	99,119
<b>Total</b>	153,622	120,018	184,578

**FY 2010**

<b>Ages</b>	<b>Middle</b>	<b>Total Low</b>	<b>High</b>
<b>65-84</b>	72,493	58,198	86,062
<b>85+</b>	87,850	66,964	106,663
<b>Total</b>	160,343	125,161	192,724

**FY 2011**

<b>Ages</b>	<b>Middle</b>	<b>Total Low</b>	<b>High</b>
<b>65-84</b>	73,216	58,778	86,920
<b>85+</b>	92,183	70,267	111,924
<b>Total</b>	165,399	129,045	198,844

**FY 2012**

<b>Ages</b>	<b>Middle</b>	<b>Total Low</b>	<b>High</b>
<b>65-84</b>	76,351	61,295	90,642
<b>85+</b>	95,016	72,426	115,364
<b>Total</b>	171,367	133,721	206,006

**FY 2013**

<b>Ages</b>	<b>Middle</b>	<b>Total Low</b>	<b>High</b>
<b>65-84</b>	79,659	63,951	94,569
<b>85+</b>	96,765	73,760	117,487
<b>Total</b>	176,424	137,710	212,057

**FY 2014**

<b>Ages</b>	<b>Middle</b>	<b>Total Low</b>	<b>High</b>
<b>65-84</b>	82,419	66,166	97,845
<b>85+</b>	96,063	73,224	116,635
<b>Total</b>	178,482	139,390	214,480

**FY 2015**

<b>Ages</b>	<b>Middle</b>	<b>Total Low</b>	<b>High</b>
<b>65-84</b>	84,247	67,634	100,015
<b>85+</b>	96,072	73,231	116,646
<b>Total</b>	180,319	140,865	216,661

**FY 2016**

<b>Ages</b>	<b>Middle</b>	<b>Total Low</b>	<b>High</b>
<b>65-84</b>	84,777	68,059	100,645
<b>85+</b>	96,473	73,537	117,133
<b>Total</b>	181,250	141,596	217,778

**FY 2017**

<b>Ages</b>	<b>Middle</b>	<b>Total Low</b>	<b>High</b>
<b>65-84</b>	84,755	68,041	100,618
<b>85+</b>	96,692	73,704	117,399
<b>Total</b>	181,447	141,745	218,017

**FY 2018**

<b>Ages</b>	<b>Middle</b>	<b>Total Low</b>	<b>High</b>
<b>65-84</b>	84,705	68,001	100,559
<b>85+</b>	96,570	73,611	117,251
<b>Total</b>	181,274	141,612	217,809

**FY 2019**

<b>Ages</b>	<b>Middle</b>	<b>Total Low</b>	<b>High</b>
<b>65-84</b>	84,482	67,823	100,295
<b>85+</b>	95,075	72,472	115,436
<b>Total</b>	179,558	140,294	215,731

**FY 2020**

<b>Ages</b>	<b>Middle</b>	<b>Total Low</b>	<b>High</b>
<b>65-84</b>	84,368	67,731	100,159
<b>85+</b>	93,063	70,938	112,993
<b>Total</b>	177,431	138,669	213,152

**FY 2021**

<b>Ages</b>	<b>Middle</b>	<b>Total Low</b>	<b>High</b>
<b>65-84</b>	84,415	67,768	100,214
<b>85+</b>	89,931	68,550	109,189
<b>Total</b>	174,345	136,318	209,404

**FY 2022**

<b>Ages</b>	<b>Middle</b>	<b>Total Low</b>	<b>High</b>
<b>65-84</b>	84,362	67,726	100,152
<b>85+</b>	86,998	66,315	105,629
<b>Total</b>	171,360	134,041	205,781

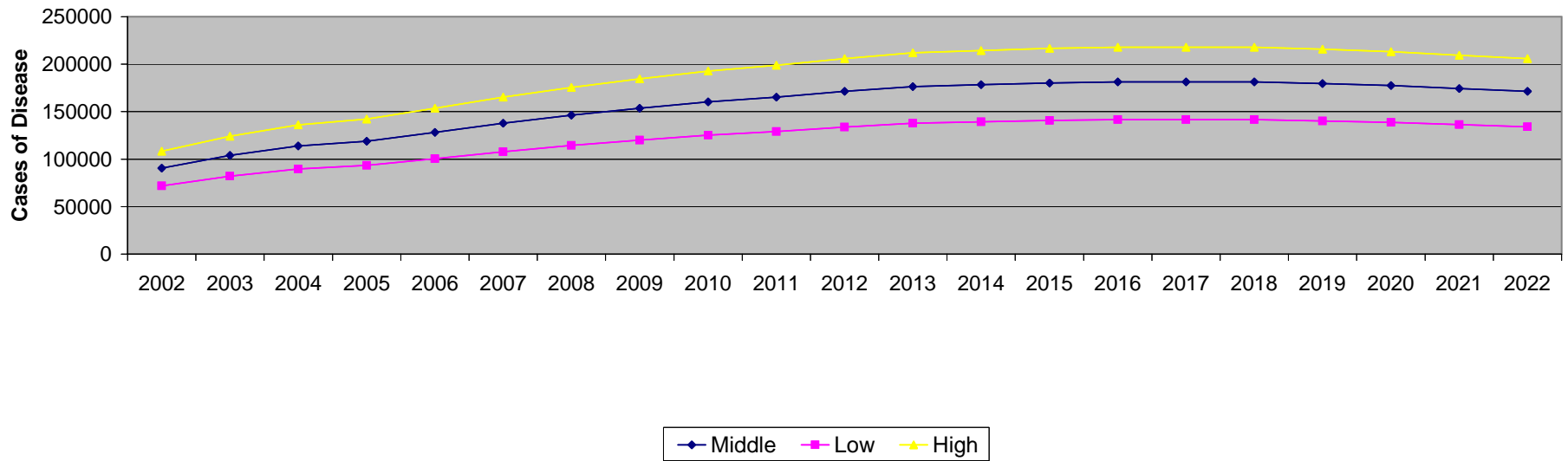
## Estimated Cases of Dementia in VA Patient Population

### Total Cases (Males + Females)

#### All Levels of Severity

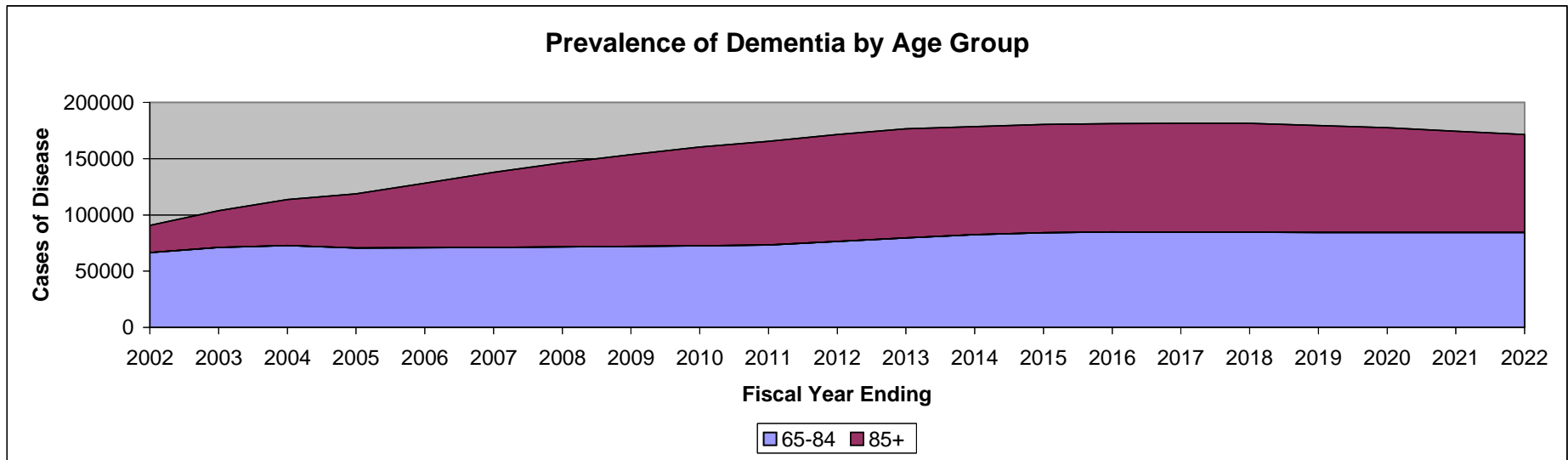
	2002	2003	2004	2005	2006	2007	2008	2009	2010	2011	2012	2013	2014	2015	2016	2017	2018	2019	2020	2021	2022
<b>Middle</b>	90,621	103,838	113,775	118,758	128,157	137,758	146,235	153,622	160,343	165,399	171,367	176,424	178,482	180,319	181,250	181,447	181,274	179,558	177,431	174,345	171,360
<b>Low</b>	71,769	82,036	89,681	93,386	100,564	107,887	114,369	120,018	125,161	129,045	133,721	137,710	139,390	140,865	141,596	141,745	141,612	140,294	138,669	136,318	134,041
<b>High</b>	108,235	124,156	136,174	142,286	153,689	165,343	175,621	184,578	192,724	198,844	206,006	212,057	214,480	216,661	217,778	218,017	217,809	215,731	213,152	209,404	205,781

### Prevalence of Dementia by Rate



**Estimated Cases of Dementia in VA Patient Population  
Middle (Point Estimate) Projection  
All Levels of Severity**

	2002	2003	2004	2005	2006	2007	2008	2009	2010	2011	2012	2013	2014	2015	2016	2017	2018	2019	2020	2021	2022
<b>65-84</b>	66,416	71,137	72,880	70,591	70,909	71,028	71,538	71,986	72,493	73,216	76,351	79,659	82,419	84,247	84,777	84,755	84,705	84,482	84,368	84,415	84,362
<b>85+</b>	24,205	32,701	40,896	48,167	57,249	66,730	74,697	81,636	87,850	92,183	95,016	96,765	96,063	96,072	96,473	96,692	96,570	95,075	93,063	89,931	86,998





**Estimated Incident Cases of Dementia in VA Patient Population  
All Levels of Severity**

**FY 2002**

<b>Ages</b>	<b>Middle</b>	<b>Total Low</b>	<b>High</b>
<b>65-84</b>	24,931	14,441	38,372
<b>85+</b>	6,854	3,401	11,610
<b>Total</b>	31,784	17,843	49,982

**FY 2003**

<b>Ages</b>	<b>Middle</b>	<b>Total Low</b>	<b>High</b>
<b>65-84</b>	26,703	15,468	41,100
<b>85+</b>	9,259	4,595	15,685
<b>Total</b>	35,962	20,063	56,785

**FY 2004**

<b>Ages</b>	<b>Middle</b>	<b>Total Low</b>	<b>High</b>
<b>65-84</b>	27,357	15,847	42,106
<b>85+</b>	11,580	5,747	19,615
<b>Total</b>	38,936	21,593	61,722

**FY 2005**

<b>Ages</b>	<b>Middle</b>	<b>Total Low</b>	<b>High</b>
<b>65-84</b>	26,498	15,349	40,784
<b>85+</b>	13,639	6,769	23,103
<b>Total</b>	40,136	22,118	63,887

**FY 2006**

<b>Ages</b>	<b>Middle</b>	<b>Total Low</b>	<b>High</b>
<b>65-84</b>	26,617	15,418	40,968
<b>85+</b>	16,210	8,045	27,459
<b>Total</b>	42,827	23,463	68,427

**FY 2007**

<b>Ages</b>	<b>Middle</b>	<b>Total Low</b>	<b>High</b>
<b>65-84</b>	26,662	15,444	41,037
<b>85+</b>	18,895	9,377	32,007
<b>Total</b>	45,557	24,821	73,044

**FY 2008**

<b>Ages</b>	<b>Middle</b>	<b>Total Low</b>	<b>High</b>
<b>65-84</b>	26,853	15,555	41,331
<b>85+</b>	21,151	10,497	35,828
<b>Total</b>	48,004	26,052	77,159

**FY 2009**

<b>Ages</b>	<b>Middle</b>	<b>Total Low</b>	<b>High</b>
<b>65-84</b>	27,021	15,652	41,590
<b>85+</b>	23,115	11,472	39,156
<b>Total</b>	50,137	27,124	80,746

**FY 2010**

<b>Ages</b>	<b>Middle</b>	<b>Total Low</b>	<b>High</b>
<b>65-84</b>	27,212	15,763	41,883
<b>85+</b>	24,875	12,345	42,136
<b>Total</b>	52,086	28,108	84,020

**FY 2011**

<b>Ages</b>	<b>Middle</b>	<b>Total Low</b>	<b>High</b>
<b>65-84</b>	27,483	15,920	42,301
<b>85+</b>	26,102	12,954	44,215
<b>Total</b>	53,585	28,874	86,516

**FY 2012**

<b>Ages</b>	<b>Middle</b>	<b>Total Low</b>	<b>High</b>
<b>65-84</b>	28,660	16,602	44,112
<b>85+</b>	26,904	13,352	45,574
<b>Total</b>	55,564	29,954	89,686

**FY 2013**

<b>Ages</b>	<b>Middle</b>	<b>Total Low</b>	<b>High</b>
<b>65-84</b>	29,902	17,321	46,024
<b>85+</b>	27,399	13,598	46,413
<b>Total</b>	57,301	30,919	92,436

**FY 2014**

<b>Ages</b>	<b>Middle</b>	<b>Total Low</b>	<b>High</b>
<b>65-84</b>	30,938	17,921	47,618
<b>85+</b>	27,200	13,499	46,076
<b>Total</b>	58,138	31,420	93,694

**FY 2015**

<b>Ages</b>	<b>Middle</b>	<b>Total Low</b>	<b>High</b>
<b>65-84</b>	31,624	18,318	48,674
<b>85+</b>	27,203	13,500	46,080
<b>Total</b>	58,827	31,819	94,754

**FY 2016**

<b>Ages</b>	<b>Middle</b>	<b>Total Low</b>	<b>High</b>
<b>65-84</b>	31,823	18,434	48,980
<b>85+</b>	27,316	13,557	46,272
<b>Total</b>	59,139	31,990	95,253

**FY 2017**

<b>Ages</b>	<b>Middle</b>	<b>Total Low</b>	<b>High</b>
<b>65-84</b>	31,814	18,429	48,967
<b>85+</b>	27,378	13,588	46,378
<b>Total</b>	59,193	32,016	95,345

**FY 2018**

<b>Ages</b>	<b>Middle</b>	<b>Total Low</b>	<b>High</b>
<b>65-84</b>	31,796	18,418	48,938
<b>85+</b>	27,344	13,570	46,319
<b>Total</b>	59,139	31,988	95,257

**FY 2019**

<b>Ages</b>	<b>Middle</b>	<b>Total Low</b>	<b>High</b>
<b>65-84</b>	31,712	18,369	48,810
<b>85+</b>	26,921	13,360	45,602
<b>Total</b>	58,633	31,730	94,412

**FY 2020**

<b>Ages</b>	<b>Middle</b>	<b>Total Low</b>	<b>High</b>
<b>65-84</b>	31,669	18,345	48,744
<b>85+</b>	26,351	13,078	44,637
<b>Total</b>	58,020	31,422	93,381

**FY 2021**

<b>Ages</b>	<b>Middle</b>	<b>Total Low</b>	<b>High</b>
<b>65-84</b>	31,687	18,355	48,771
<b>85+</b>	25,464	12,637	43,134
<b>Total</b>	57,151	30,992	91,905

**FY 2022**

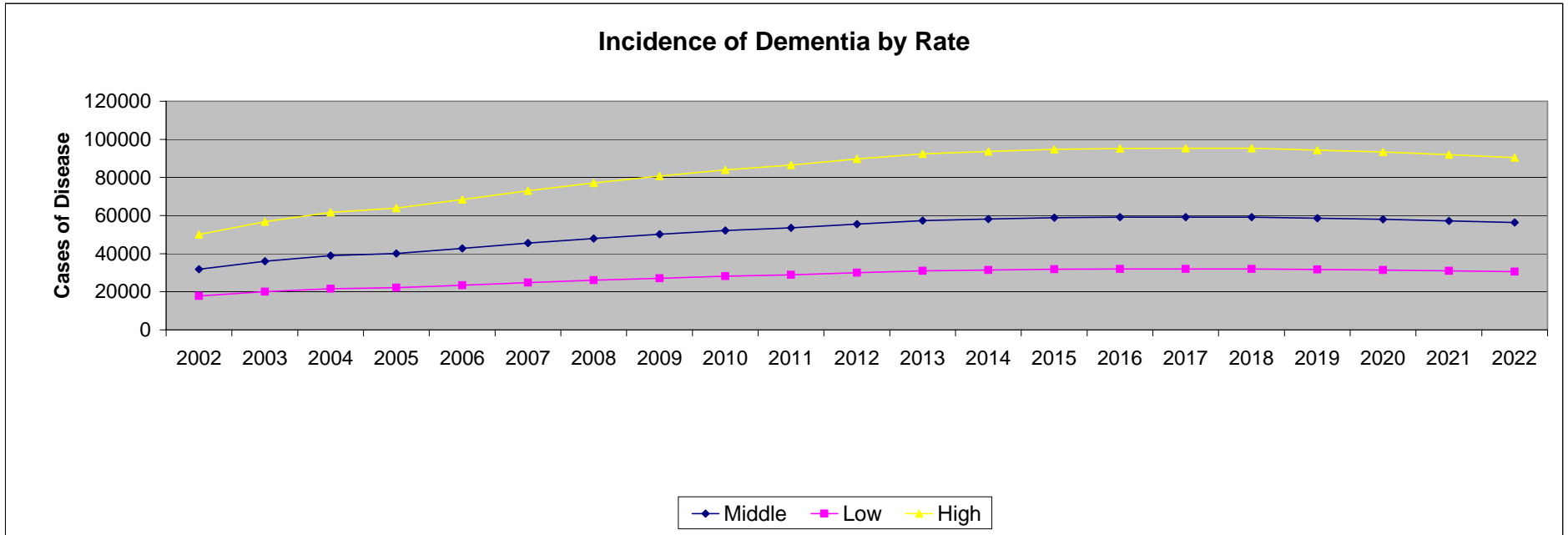
<b>Ages</b>	<b>Middle</b>	<b>Total Low</b>	<b>High</b>
<b>65-84</b>	31,667	18,343	48,741
<b>85+</b>	24,633	12,225	41,728
<b>Total</b>	56,301	30,569	90,469

## Estimated Incident Cases of Dementia in VA Patient Population

### Total Cases (Males + Females)

#### All Levels of Severity

	2002	2003	2004	2005	2006	2007	2008	2009	2010	2011	2012	2013	2014	2015	2016	2017	2018	2019	2020	2021	2022
<b>Middle</b>	31,784	35,962	38,936	40,136	42,827	45,557	48,004	50,137	52,086	53,585	55,564	57,301	58,138	58,827	59,139	59,193	59,139	58,633	58,020	57,151	56,301
<b>Low</b>	17,843	20,063	21,593	22,118	23,463	24,821	26,052	27,124	28,108	28,874	29,954	30,919	31,420	31,819	31,990	32,016	31,988	31,730	31,422	30,992	30,569
<b>High</b>	49,982	56,785	61,722	63,887	68,427	73,044	77,159	80,746	84,020	86,516	89,686	92,436	93,694	94,754	95,253	95,345	95,257	94,412	93,381	91,905	90,469



**Estimated Incident Cases of Dementia in VA Patient Population**  
**Middle (Point Estimate) Projection**  
**All Levels of Severity**

	2002	2003	2004	2005	2006	2007	2008	2009	2010	2011	2012	2013	2014	2015	2016	2017	2018	2019	2020	2021	2022
<b>65-84</b>	24,931	26,703	27,357	26,498	26,617	26,662	26,853	27,021	27,212	27,483	28,660	29,902	30,938	31,624	31,823	31,814	31,796	31,712	31,669	31,687	31,667
<b>85+</b>	6,854	9,259	11,580	13,639	16,210	18,895	21,151	23,115	24,875	26,102	26,904	27,399	27,200	27,203	27,316	27,378	27,344	26,921	26,351	25,464	24,633

