

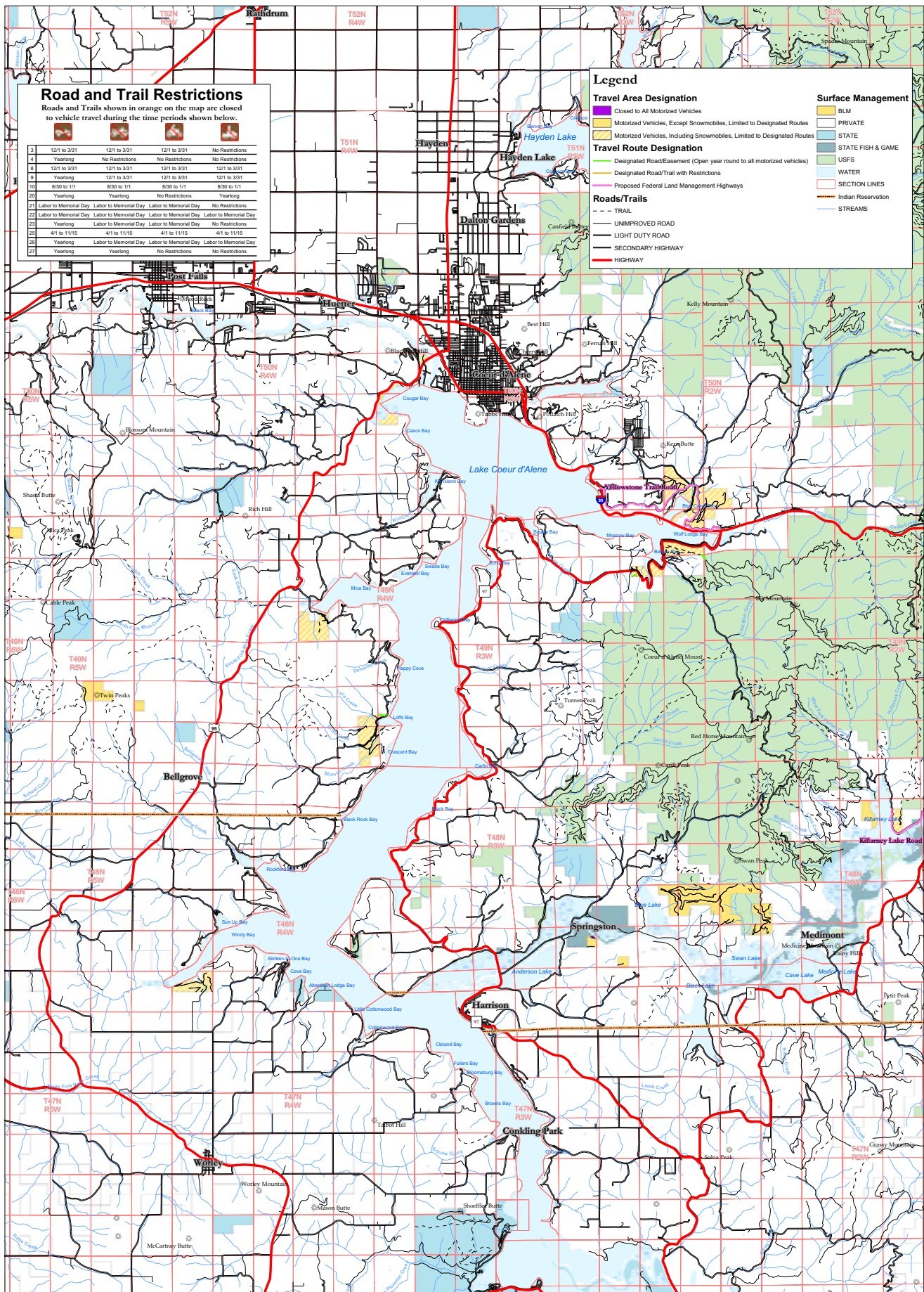
Road and Trail Restrictions

Roads and Trails shown in orange on the map are closed to vehicle travel during the time periods shown below.

	12/1 to 3/31	12/1 to 3/31	12/1 to 3/31	No Restrictions
1	Yearlong	No Restrictions	No Restrictions	No Restrictions
2	12/1 to 3/31	12/1 to 3/31	12/1 to 3/31	12/1 to 3/31
3	Yearlong	12/1 to 3/31	12/1 to 3/31	12/1 to 3/31
4	8/20 to 1/11	8/20 to 1/11	8/20 to 1/11	8/20 to 1/11
5	Yearlong	Yearlong	No Restrictions	Yearlong
6	Labor to Memorial Day	Labor to Memorial Day	Labor to Memorial Day	No Restrictions
7	Labor to Memorial Day	Labor to Memorial Day	Labor to Memorial Day	Labor to Memorial Day
8	Yearlong	Labor to Memorial Day	Labor to Memorial Day	No Restrictions
9	4/1 to 11/15	4/1 to 11/15	4/1 to 11/15	4/1 to 11/15
10	Yearlong	Labor to Memorial Day	Labor to Memorial Day	Labor to Memorial Day
11	Yearlong	Yearlong	No Restrictions	No Restrictions

Legend

Travel Area Designation Closed to All Motorized Vehicles Motorized Vehicles, Except Snowmobiles, Limited to Designated Routes Motorized Vehicles, Including Snowmobiles, Limited to Designated Routes Designated Road/Easement (Open year round to all motorized vehicles) Designated Road/Trail with Restrictions Proposed Federal Land Management Highways	Surface Management BLM PRIVATE STATE STATE FISH & GAME USFS WATER SECTION LINES Indian Reservation STREAMS
Travel Route Designation Designated Road/Easement (Open year round to all motorized vehicles) Designated Road/Trail with Restrictions Proposed Federal Land Management Highways	Roads/Trails TRAIL UNIMPROVED ROAD LIGHT DUTY ROAD SECONDARY HIGHWAY HIGHWAY



US Department of the Interior
Bureau of Land Management
Coeur d'Alene Field Office
Resource Management Plan



Coeur d'Alene, Idaho
May 2007

Motorized Route Designations - Coeur d'Alene Map 5

Motorized vehicle travel (except snowmobiles) is "limited" to designated roads and trails on all BLM managed land, except within areas designated as "closed" (see legend). Some of the designated roads and trails also have vehicle class or seasonal restrictions. There are no "open" areas - off-road motorized travel is not permitted, except for snowmobiles. Snowmobiles are allowed to travel off-road on all BLM lands, except where depicted otherwise on this map.

This map is intended for display purposes only. No warranty is made by the Bureau of Land Management as to the accuracy, reliability or completeness of these data for individual or aggregate use with other data, or for purposes not intended by BLM. This map may not meet National Map Accuracy Standards. This product was developed using a Geographic Information System and information may be updated without notification.

0 1 2 3 4 5 6 Miles

