

U.S. Department of Energy  
Grand Junction Office

# **UMTRCA Title II Activities Update and Lessons Learned**

June 2002–June 2003

Art Kleinrath, Program Manager  
Long-Term Surveillance and Maintenance Program  
U.S. Department of Energy Grand Junction Office  
Grand Junction, Colorado  
(970) 248–6037 • [akleinrath@gjo.doe.gov](mailto:akleinrath@gjo.doe.gov)



5/2003

# Sites Expected To Transfer to DOE in Near Future

- Bear Creek, Wyoming
- Petrotomics, Wyoming
- L-Bar, New Mexico



# Post-Closure Lessons Learned

- To date, there has been no uncontrolled release of isolated materials from a reclaimed Title I or Title II site
- Problems experienced are not related to adequacy of cell design or construction

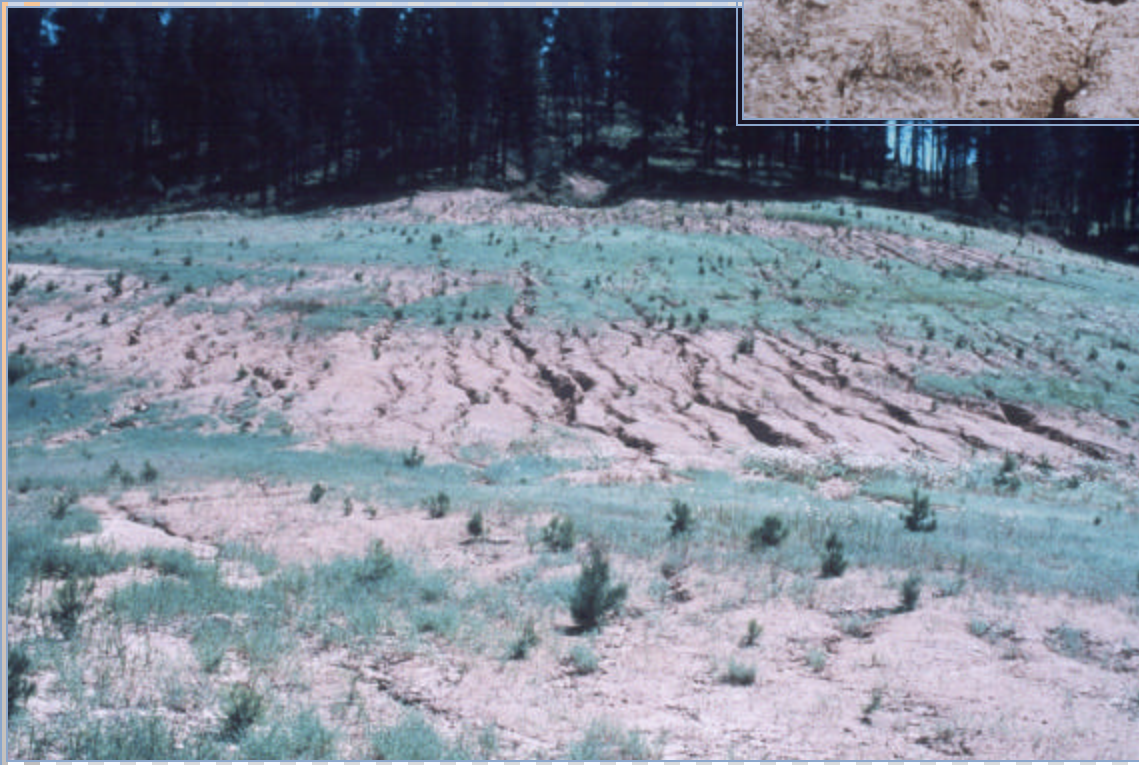


# Post-Closure Lessons Learned (continued)

- Some sites have impacted adjacent properties by modifying local infiltration/runoff patterns, thereby causing erosion
- Most problems related to real property management; these problems are compounded by DOE's status as an "absentee landlord"



## Lowman, Idaho



Erosion on adjacent property







## Shiprock, New Mexico



## Shiprock, New Mexico



Erosion begins  
at property  
boundary





## Lakeview, Oregon



Crumbling riprap





# Post-Closure Experience With Land Use and Control

- Intended post-closure land use must be compatible with site circumstances
  - Surrounding land uses—by both humans and nature
  - Proximity to population centers
  - Potential for undesirable “attractive nuisance” effects
  - Anticipated level of post-closure care



# Post-Closure Experience With Land Use and Control (continued)

- Agricultural uses have been positive
  - Conscientious users (treat like one's own land)
  - Additional set of eyes watching site
  - User motivated to maintain fencing



# Post-Closure Experience With Land Use and Control (continued)

- Proximity to college has been a problem
  - Attractive nuisance issue
  - Vandalism
  - Party spot
- Proximity to urban areas can be a problem
  - Attractive nuisance
  - Vandalism
  - Unauthorized "open space" use



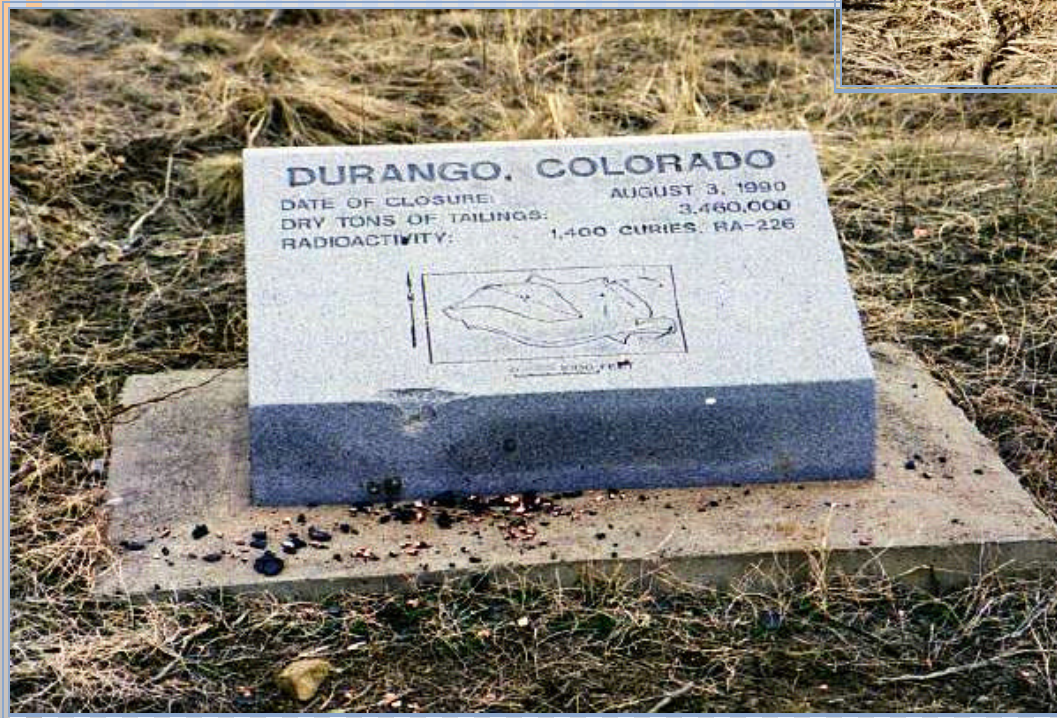


# Miscellaneous Post-Closure Observations

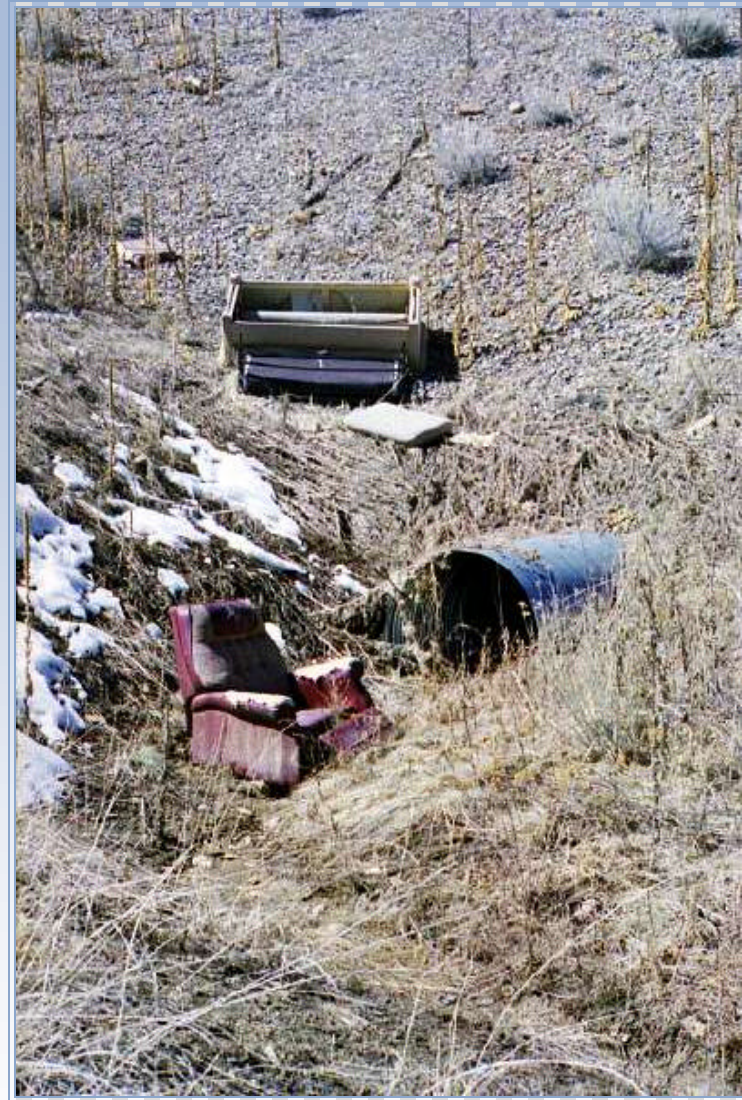
- Fencing can be both positive and negative
- Scheduled maintenance can have unanticipated positive effects
- Problems can arise where post-closure land use is not consistent with surrounding land use



# Durango, Colorado







## Durango, Colorado







## Bluewater, New Mexico





**Bluewater, New Mexico**







**Burrell, Pennsylvania**







## Burrell, Pennsylvania







## Burrell, Pennsylvania







**Falls City, Texas**







## Steakholders at Edgemont, South Dakota



# Contacts and Resources

Art Kleinrath, Program Manager

Long-Term Surveillance  
and Maintenance Program

U.S. Department of Energy  
Grand Junction Office

2597 B<sup>3</sup>/<sub>4</sub> Road  
Grand Junction, CO 81503  
Phone: (970) 248-6037  
Fax: (970) 248-6023  
[akleinrath@gjo.doe.gov](mailto:akleinrath@gjo.doe.gov)

Audrey Berry, Public Affairs

U.S. Department of Energy  
Grand Junction Office

2597 B<sup>3</sup>/<sub>4</sub> Road  
Grand Junction, CO 81503  
Phone: (970) 248-7727  
Fax: (970) 248-6023  
[aberry@gjo.doe.gov](mailto:aberry@gjo.doe.gov)

## Website Addresses

Grand Junction Office (GJO): <http://www.gjo.doe.gov>

GJO Long-Term Surveillance and Maintenance Program:  
<http://www.gjo.doe.gov/programs/ltsm>

U.S. Department of Energy Headquarters Long-Term  
Stewardship Information Center:  
<http://lts.apps.em.doe.gov>

