

# VOR RWY 9

ELKHART MUNI (EKM)

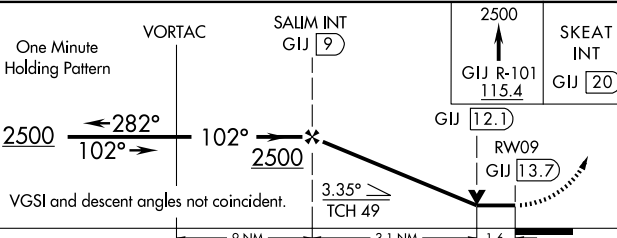
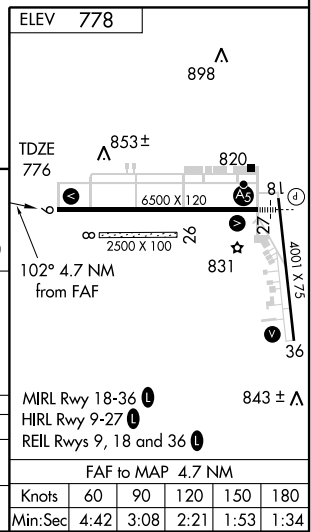
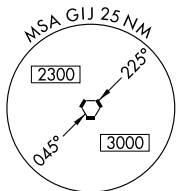
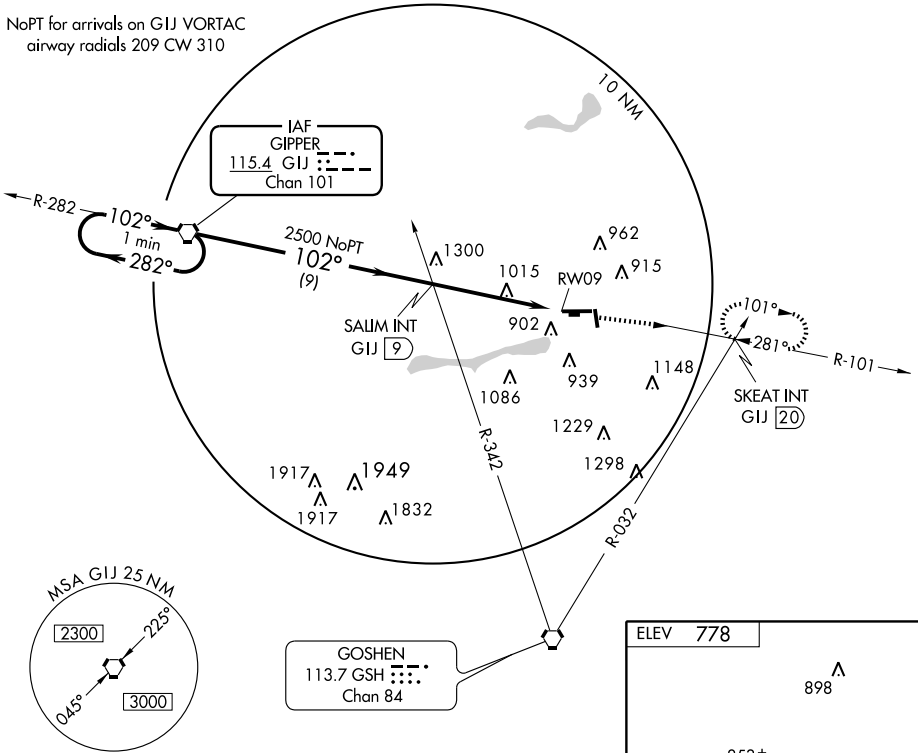
VORTAC GJ1	APP CRS	Rwy Idg	6500
115.4	102°	TDZE	776
Chan 101		Apt Elev	778

**▲** If local altimeter setting not received, use South Bend altimeter setting and increase all MDAs 40 feet. VDP NA with South Bend altimeter setting.

MISSED APPROACH: Climb to 2500 via GJ1 R-101 to SKEAT Int/GJ1 20 DME and hold.

AWOS-3	SOUTH BEND APP CON *	ELKHART TOWER *	GND CON	CLNC DEL	UNICOM
124.475	118.55 257.8	119.5 (CTAF) <b>0</b>	121.8	121.8	122.95

NoPT for arrivals on GJ1 VORTAC  
airway radials 209 CW 310



CATEGORY	A	B	C	D
S-9	1340-1 564 (600-1)		1340-1½ 564 (600-1½)	1340-1¾ 564 (600-1¾)
CIRCLING	1340-1 562 (600-1)		1340-1½ 562 (600-1½)	1340-2 562 (600-2)

MIRL Rwy 18-36 **0**  
HIRL Rwy 9-27 **0**  
REIL Rwys 9, 18 and 36 **0**

FAF to MAP 4.7 NM

Knots	60	90	120	150	180
Min:Sec	4:42	3:08	2:21	1:53	1:34

EC-2, 12 FEB 2009 to 12 MAR 2009

EC-2, 12 FEB 2009 to 12 MAR 2009