

# Sixteen Years of Florida Current Transport at 27° N

Molly O’Neil Baringer

NOAA/Atlantic Oceanographic and Meteorological Laboratory, Miami, Florida

Jimmy C. Larsen

NOAA/Pacific Marine Environmental Laboratory, Seattle, WA

## Abstract.

Daily transports of the Florida Current have been inferred since 1982 through the use of submerged submarine telephone cables that measure the voltage difference across the Straits of Florida. Using all sixteen years of data, the annual cycle ranges from a minimum of 30 Sv in January, to a maximum of 33.5 Sv in July. The annual cycle is not stable throughout the entire period however: the first eight years show a slightly larger peak to peak annual range of 5 Sv, while the second eight years have a semi-annual cycle with a distinct minimum in July and peak to peak range of 4 Sv. Filtered Florida Current transports contain a two to three year variation between 2 and 3 Sv in amplitude and a decadal variation of about  $\pm 2$  Sv. The decadal changes in the Florida Current transport are remarkably similar to the North Atlantic Oscillation Index.

## Introduction

The Florida Current contains both the wind driven subtropical circulation and the upper layer of the meridional thermohaline circulation that supplies the warm waters of the Gulf Stream system. Transport measurements between the coast of Florida and the Bahamas have long been supposed to be important for understanding global climate. Models have used the Florida Current annual cycle as a benchmark for their model validation. So many observational programs have been conducted in the Straits of Florida, one could argue that this current system is one of the best known in all the world’s oceans. However, it is highly variable and continuous measurements are required to filter out the high frequency variability.

With new technologies in hand that allowed the direct determination of the absolute velocity, *Schmitz and Richardson* [1968] undertook the first detailed observational program of the Florida Current in 1964-1967 using the dropsonde technique. *Niiler and Richardson* [1973] later reanalyzed a more complete record of the

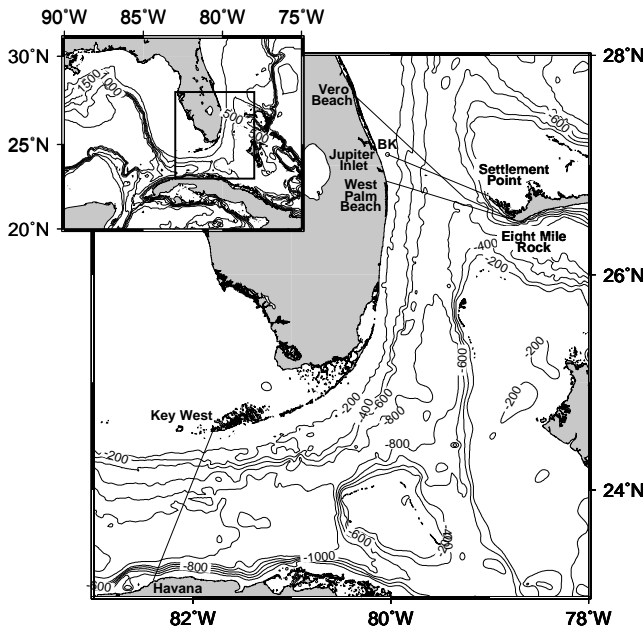
transport between Miami and Bimini extending to 1970 and found a transport of 29.5 Sv with an annual cycle amplitude of 4.1 Sv and a maximum in July. More recently, an intensive observational program was undertaken under the auspices of NOAA’s Subtropical Atlantic Climate Study (STACS) during 1982 to 1984 which included 16 cross sections using Pegasus velocity profilers and 7 months of current meter data [*Molinari et al.*, 1985a, b; *Lee et al.*, 1985; *Larsen and Sanford*, 1985; *Maul et al.*, 1985; *Schott and Zantopp*, 1985].

Herein, we present an update on the present state of observations of the Florida Current transport monitored through submarine telephone cables crossing the Florida Straits (Fig. 1). The cable monitoring system is outlined and the long term time series is presented. We derive a revised annual cycle estimate and then examine the long term trends in transport in relation to the North Atlantic Oscillation (NAO).

## The Submarine Cables

Submarine cables act as sensors for measuring voltage between the ends of the cable. Using these voltages and simple electromagnetic theory, the water column transport changes across the cable can be inferred. In his pioneering work Stommel described it simply as: “Due to the fact that the water in the ocean is a conductor, and that it is everywhere under the influence of the earth’s magnetic field, we should expect, by the law of electric induction, that wherever the water is in motion electric potentials and currents will be established” [*Stommel*, 1948].

The conversion of the voltage measurements to transport and the errors associated with this conversion, such as geomagnetic fluctuations, temperature, and meandering effects, have been discussed in *Larsen* [1992]. Profiling-derived transports (i.e. in situ transport observations that measure the absolute velocity) are used to calibrate the cable derived transports and also determine voltage shifts. These profiling-derived transports are shown as black dots in Figure 2 and are estimated to



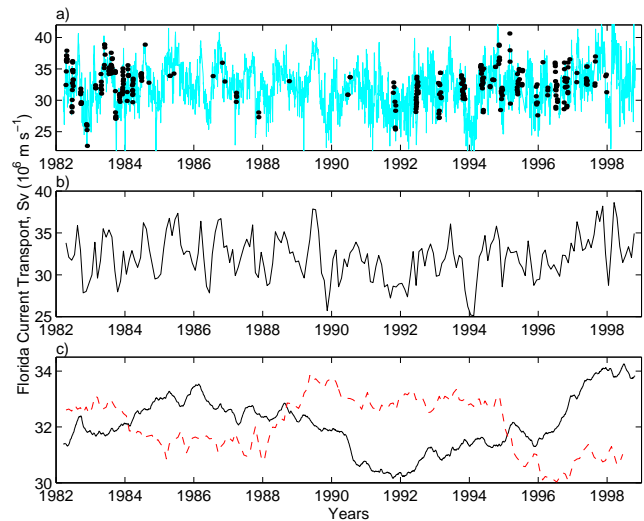
**Figure 1.** Locations of submerged cables used for transport monitoring.

be accurate to better than 0.2 Sv [Hacker *et al.*, 1996, given that the Pegasus values are accurate to 1 cm/s].

Details of the cable history can be found in Larsen [1992]. Most recently, a cable between West Palm Beach, FL and Eight Mile Rock, Grand Bahamas Island has been used. These measurements continued until October 1998, when this cable was retired from telephone service and replaced by a cable between Vero Beach, FL and Eight Mile Rock, Grand Bahamas Island. When the first cable was retired, it was grounded at West Palm Beach with the expectation that voltages could be recorded only at the other end. Technical difficulties led to the delay in instrumentation of this cable until March of 2000, resulting in a 17 month gap in the time series. In the future it should be possible to record voltages on the new active fiber optic cable using the insulated copper shield that could be grounded at Eight Mile Rock. Therefore, low cost voltage measurements of the Florida Current should be able to continue for many years.

### Transport Time Series

Over 16 years of daily mean transports have been computed from the cable voltage recordings. Figure 2 shows the complete record of daily mean voltage-derived transports from April 1982 to October 1998 for the northern end of the Straits of Florida. Geomagnetic

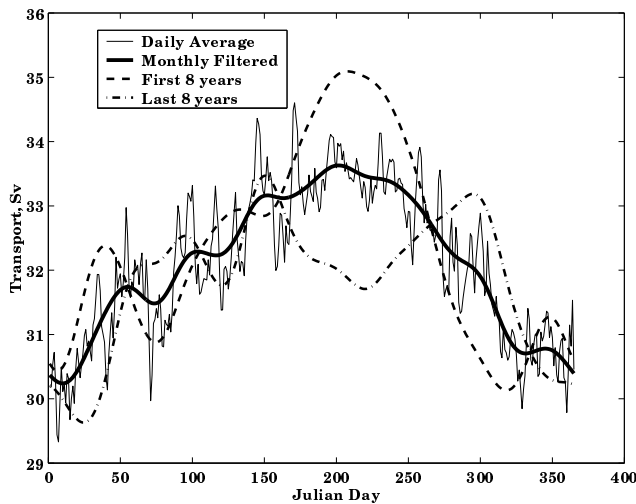


**Figure 2.** Time series of Florida Current transport inferred from the cable voltages including (a) the daily transport values (solid line), (b) the monthly average transport (solid line) and (c) the two year running means of the daily transport values (solid line). Panel (c) also includes the monthly mean NAO index of Hurrell [1995] (dashed line) which is rescaled to have the same variance as the cable transport (unitless). Panel (a) includes in situ observations of Florida Current transport obtained to calibrate the cable and monitor offsets induced by changes in voltage due to corroding resistors, etc. (solid circles).

induced voltages and tidal signals were removed prior to computing the daily mean values. The profiling derived transports are also plotted for comparison. The long term mean transport is 32.2 Sv. The annual and two year running mean values of the transport are also shown in Figure 2. It shows that the Florida Current transport slowly decreased by about 4 Sv from 1985 to 1992 and then slowly increased until the present. The yearly means show 2 to 3 year variations with changes as large as 4 Sv.

### Annual Cycle

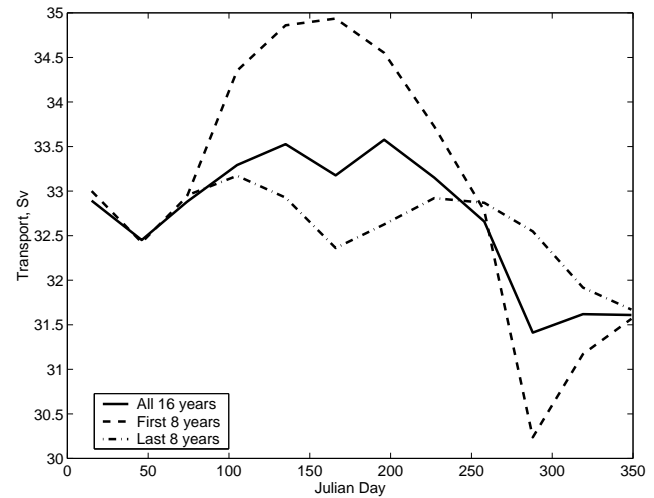
The annual cycle of the Florida Current can be computed by forming a composite annual cycle of daily transports (i.e. all January 1's are averaged together), and is shown in Figure 3. This daily annual cycle was then smoothed using a 3rd order Butterworth filter with a half power cutoff at 25 days. The average daily values for all 16 years of data are shown with the thin solid line. The thick solid line includes the filtered version of this annual cycle using all 16 years of data (with dashed lines representing  $\pm$  one standard deviation of the av-



**Figure 3.** Annual Cycle (AC) of Cable derived transport of the Florida Current computed and smoothed (see text) including: the complete sixteen year daily cable record (thin solid line), a smoothed version of the complete sixteen year AC (thick solid line), a smoothed AC from only the first 8 years (thick dashed line), and a smoothed AC from the last 8 years (thick chain dashed). The daily average AC (thin solid) and its standard error (which is about 1 Sv, not shown) give an indication of the level of high frequency noise and confidence in the means.

erage daily values). The heavy dashed line is an annual cycle computed from only the first 8 years of data (1982-1990) and is the equivalent to the annual cycle described by *Larsen* [1992], which was also similar, although slightly smaller than, the annual cycle found by *Niiler and Richardson* [1973] and *Leaman et al.* [1987]. This shows the well known summer maximum in transport particularly in July and August (Julian days 180 to 240) and a pronounced rapid decrease in transport in early October (Julian days 260-280). A surprising finding is the annual cycle computed from the last 8 years of data (shown as the thick chain-dashed line), which shows two peaks with a secondary minimum in July-August sandwiched between two maxima in May-June and Oct-Nov. The overall range in monthly values is smaller (about 4 Sv peak to peak change vs. 5 Sv for the earlier period). The difference between these curves in the summer appears to be significant (the curves are different by more than twice the standard deviation). It is not clear what has caused this radical shift in the annual cycle. It is now clear however, that we cannot take the annual cycle of the Florida Current for granted.

Independent confirmation of the shift in the annual cycle of the Florida Current was obtained by forming an



**Figure 4.** Annual Cycle (AC) of transport of the Florida Current computed and smoothed (see text) including: all direct in situ observations over the complete sixteen year record (thick solid line), observations taken in the first 8 years (dashed line), and observations taken from the last 8 years (chain dotted).

annual cycle from the in situ Pegasus transport observations (Figure 4). Pegasus transports were binned by month and averaged for all sixteen years, the first eight years and the last eight years. These monthly averages were then subjected to a median filter and the results plotted in Figure 4. These in situ transport observations confirm the shift in the annual cycle seen in the more complete cable transports. The prominent peak in mid-summer seen through the first half of the transport record is substantially diminished and even reversed in the second half of the record.

### Interannual variations

Increasingly, climate studies have focused attention upon the natural variability of the coupled oceanic atmospheric system and in particular the atmospheric phenomenon known as the North Atlantic Oscillation (NAO). The NAO is loosely defined as the sea level pressure difference between Iceland and the Azores [e.g. *Hurrell*, 1995]. Variability in the NAO has been shown to have significant influence on storm tracks and European weather, marine life in Sweden and Norway, sea surface temperatures north of the Gulf Stream, and fish mortality off the northeastern United States [for a nice summary see *Hurrell and Loon*, 1997]. In view of the NAO's impact on so many important climate variables, it is a extremely important to understand what causes

its variability and how the NAO forces other climate signals.

We have extracted the longer period fluctuations from the Florida Current transport time series (the longest time series of ocean transport) to compare to the NAO (Fig. 2c). The Florida Current time series of monthly transport values and the NAO time series of monthly values [Hurrell, 1995] were filtered using a 2-year running mean (Fig. 2c). The correlation of these two smoothed time series is large and negative (-0.75), with the NAO leading the Florida Straits transport by 15-23 months and significant at the 95% level. There are a wide range of lags with significant negative correlations with the NAO leading the cable by between 1 to 25 months and hence the exact phase relationship is in some question depending on how the data sets are smoothed (not shown). Also, there exists a positive correlation (>90% significance) near lags of 43-46 months with the Florida Current transport leading the NAO index. Although this lag is barely resolved by the sixteen year time series, we note it here because it points to a potential forcing on the atmosphere through Florida Current changes and a possible coupled oscillation with a time scale of about 5 years.

## Discussion

These changes indicate that the Florida Current may have a significant influence on the North Atlantic climate. The sheer volume transport of the Florida Current must be kept in mind in assessing the climate impact of interannual changes in transport. The Florida Current, at over 32 Sv, can replace all of the North Atlantic surface water down to 100 m within one year. So, for example, a 2 Sv increase in transport over a one year period could cause an increase of about 1°C in the North Atlantic surface temperature if the Florida Current has a constant average temperature of 19°C and is mixed with the top 100 m of the North Atlantic and surface heat loss, etc., remain unchanged.

Long term monitoring of the Florida Current has shown that some long standing assumptions of the ocean circulation may change on decadal time scales. This note examines the full sixteen years of Florida Current transport time series and shows that while the mean transport has not changed significantly (32.2 Sv), the annual cycle has changed dramatically. This observation should radically change how we validate numerical models.

Low passed Florida Current transports also contain a two to three year variation of between 2 and 3 Sv (amplitude) and a decadal variation of about  $\pm 2$  Sv

(fig. 2). A comparison of the two time series shows that the transport changes are similar to the long term changes in the NAO index. These results suggest a link between an increase/decrease in the transport, an increase/decrease in the sea surface temperature and a decrease/increase in the winter westerlies winds as indicated by the changes in the NAO index.

## Acknowledgments.

This research was sponsored in part by the National Oceanic and Atmospheric Administration Office of Global Programs and the Office of Oceanic and Atmospheric Research. Special thanks to Ansley Manke for data processing and Libby and Bill Johns and Bob Molinari for comments on a draft of this manuscript. Thanks to the Captain and crew of the M/V Baby Max, M/V Playin' Hooky and the M/V Boomerang for their able seamanship during the calibration cruises, and Robert Roddy, Doug Anderson, Dave Bitterman, Craig Engler, Jose Ochoa, and especially Mark Bushnell for their numerous cruises in choppy seas.

## References

- Hacker, P., E. Firing, W. D. Wilson, and R. L. Molinari, Direct observations of the current structure east of the Bahamas, *Geophysical Research Letters*, **23**, 1127-1130, 1996.
- Hurrell, J. W., Decadal trends in the North Atlantic Oscillation: Regional temperatures and precipitation, *Science*, **269**, 676-679, 1995.
- Hurrell, J. W., and H. V. Loon, Decadal variations in climate associated with the North Atlantic oscillation, *Climate Change*, **36**, 301-326, 1997.
- Larsen, J. C., Transport and heat flux of the Florida Current at 27°N derived from cross-stream voltages and profiling data: theory and observation, *Philosophical Transactions of the Royal Society of London*, **338**, 169-236, 1992.
- Larsen, J. C., and T. B. Sanford, Florida Current volume transports from voltage measurements., *Science*, **227**, 302-304, 1985.
- Leaman, K. D., R. L. Molinari, and P. S. Vertes, Structure and variability of the Florida Current at 27° N: April 1982-July 1984, *Journal of Physical Oceanography*, **17**, 565-583, 1987.
- Lee, T. N., F. Schott, and R. Zantopp, Florida Current: Low-frequency variability of the Florida Current as observed with moored current meter stations during April 1982-June 1983, *Science*, **227**, 298-301, 1985.
- Maul, G. A., F. Chew, M. Bushnell, and D. Mayer, Sea level variation as an indicator of Florida Current volume transport: Comparisons with direct measurements, *Science*, **227**, 304-307, 1985.
- Molinari, R. L., G. A. Maul, F. Chew, W. D. Wilson, M. Bushnell, T. Lee, R. Zantopp, J. C. Larsen, and T. Sanford, Subtropical Atlantic Climate Studies: Introduction, *Science*, **227**, 292-294, 1985a.

- Molinari, R. L., W. D. Wilson, and K. Leaman, Volume and heat transports of the Florida Current: April 1982 through August 1983, *Science*, *227*, 295–297, 1985b.
- Niiler, P. P., and P. L. Richardson, Seasonal variability of the Florida Current, *Journal of Marine Research*, *31*, 144–167, 1973.
- Schmitz, W. J., Jr., and P. L. Richardson, On the transport of the Florida Current, *Deep-Sea Research*, *15*, 679–693, 1968.
- Schott, F., and R. Zantopp, Florida Current: Seasonal and interannual variability, *Science*, *227*, 308–311, 1985.
- Stommel, H., The theory of the electric field induced in deep ocean currents, *Journal of Marine Research*, *7*, 386–392,

---

1948.

Molly O. Baringer NOAA/AOML, Miami, FL 33149  
USA (e-mail: baringer@aoml.noaa.gov)

Jim Larsen 12062 Lakeside Pl. NE Seattle, WA 98125  
(e-mail: jlarsenrobust@w-link.net)

April XX, 2001 ; revised May XX, 2001; accepted  
June XX, 2001.

---

This preprint was prepared with AGU's L<sup>A</sup>T<sub>E</sub>X macros v4,  
with the extension package 'AGU++' by P. W. Daly.