

Last update 12/9/2008 9:15 AM

## **README File for 2005-2007 American Community Survey 3-Year Data Products Delivered via FTP**

**FTP Site URL:** [http://www2.census.gov/acs2007\\_3yr/prod/](http://www2.census.gov/acs2007_3yr/prod/)

### **Note to Users of the 2005-2007 ACS 3-YEAR FTP Site**

- **Since some of the .csv files on the FTP site contain more than 65,000+ rows, these files may not load fully into some spreadsheet and database software packages.**
- Non-Iterated Selected Population Profiles, which are similar to the Subject Tables, and were placed in the same file for the 2007 ACS 1-Year data release but for the 3-year release they were placed in separate files. A complete list of both of these products is available on section VIII) List of 2005-2007 ACS Subject Tables and Non-Iterated Selected Population Profiles
- The geographic term for the area, Urban Clusters, was initially defined by the Census Bureau in 2000, but subsequent geographic area updates redefined these areas as Urbanized Areas in 2002. Files on the FTP site for Urbanized Areas, labeled as Cumberland, MD--WV--PA Urban Cluster and Hanford, CA Urban Cluster, which contain the term Urban Cluster, but should be labeled as follows: Cumberland, MD--WV--PA Urbanized Area and Hanford, CA Urbanized Area.
- Display of the Order column in the Detailed Table .csv files. Due to issues with the .csv files, some decimal line numbers for median tables that should be displayed as 0.7 are appearing as 0.699951172. For example for table B01002I, the Order value is displayed as 0.699951172 for the stub Median age --.
- The headers at the top of the Data Profile tables show 2007, for example 'Selected Economic Characteristics: 2007', but are displaying 2005-2007 estimates. The ACS Website contains profile headers that show 2005-2007.
- In the Iterated Selected Population Profile .csv files, all of the means and medians which are expressed in dollars contain a dollar sign "\$", which is not done currently on AFF or on the 1-year FTP site.
- Differences between the 1-Year and 3-Year FTP Data Products are addressed below in section VI) Special Notes.

### **I) Data Available at this FTP Site**

#### **Data Products**

Six types of Data Products are provided on this site for the release of the 2005-2007 American Community Survey (ACS) 3-Year Social, Economic, Housing, and Demographic data for areas with populations of 20,000 or more – Detailed Tables, Data Profiles, Subject Tables, Non-Iterated Selected Population Profiles, Iterated Selected Population Profiles, and Geographic Comparison Tables. All data products contained on this FTP site will be released by December 9, 2008 on American FactFinder.

Information about these Data Products and ACS published geographies are available at the Data Product Details page, [http://www.census.gov/acs/www/Products/users\\_guide/](http://www.census.gov/acs/www/Products/users_guide/).

Detailed Tables provide basic housing and population characteristics. These tables are the foundation upon which higher-level profiles are built. The Detailed Tables come complete with the margin of error (MOE) as well as the lower bound and upper bound of a confidence interval. Both the margin of error and the confidence interval are based on the 90 percent level of confidence.

Data Profiles provide estimates of selected demographic, social, economic, and housing characteristics. The profiles come complete with the margin of error (MOE), which represent the 90 percent confidence interval.

Geographic Comparison Tables are single-variable tables comparing selected characteristics for geographies other than states.

Subject Tables and Non-Iterated Selected Population Profiles highlight a particular subject of interest. Each subject table is accompanied by its margin of error and the confidence intervals are based on the 90 percent level of confidence.

The Iterated Selected Population Profile is a single table that can be viewed, or “iterated” for many race, ethnic, ancestry and country of birth groups. The population group choices are similar to those found in the Census 2000 Summary Files 2 and 4. Selected Population Profile's are published for the nation, states, and other geographic areas that have a total population of 500,000 and a group or iterated population of 20,000 or greater.

Detailed Tables will be available by December 9, 2008 in a Summary File format similar to the format used for Census 2000 Detailed Tables. The summary files will be located on the ftp site at [http://www2.census.gov/acs2007\\_3yr/summaryfile/](http://www2.census.gov/acs2007_3yr/summaryfile/).

### **Margin of error (MOE)**

A margin of error is the difference between an estimate and its upper or lower confidence bounds. The confidence interval represents the degree of uncertainty about the estimate. All published margins of error for the American Community Survey are based on a 90 percent confidence level. Add the margin of error to the estimate (for an upper bound) and subtract the margin of error from the estimate (for a lower bound) to create a confidence interval. In doing this, it is important not to allow either the lower bound or the upper bound of the confidence interval to go beyond the range of possible values for an estimate. For example, an estimate of children enrolled in school cannot be less than 0. Therefore, its lower bound can also not be less than 0.

## **II) Documentation Available at this FTP Site**

1) The Accuracy of the Data document for 2005-2007 will be available on December 9<sup>th</sup> at <http://www.census.gov/acs/www/UseData/Accuracy/Accuracy1.htm>. This document provides technical information on sample design, estimation methodology, and accuracy of the data.

2) Some geographic areas include many tables that are subject to geographic restrictions. A list of Detailed Tables that contain geographic restrictions can be found at:  
[http://www.census.gov/acs/www/Products/users\\_guide/ACS2007\\_Data\\_Product\\_Geographic\\_Restriction.xls](http://www.census.gov/acs/www/Products/users_guide/ACS2007_Data_Product_Geographic_Restriction.xls)

3) There is also a Footnotes document for the data products located at:  
[http://www2.census.gov/acs2007\\_3yr/prod/2005-2007\\_3yr\\_Headnotes\\_Footnotes\\_FTP.xls](http://www2.census.gov/acs2007_3yr/prod/2005-2007_3yr_Headnotes_Footnotes_FTP.xls)

4) All of the Detailed Table Shells are located on the 2005-2007 Guide to the ACS Data Products Details Webpage located on the following URL:  
[http://www.census.gov/acs/www/Products/users\\_guide/acs\\_2007\\_tables.xls](http://www.census.gov/acs/www/Products/users_guide/acs_2007_tables.xls)

### III) Finding the Data

Under the FTP directory ‘[http://www2.census.gov/acs2007\\_3yr/prod/](http://www2.census.gov/acs2007_3yr/prod/)’ there are five sub-directories, *TablesProfilesSubjectTables*, *GeographicComparisonTables*, *SelectedPopulationProfiles*, and one file: *2005-2007\_3yr\_Headnotes\_Footnotes\_FTP.xls*.

The ACS data products for the FTP site are organized by the following directories:

[http://www2.census.gov/acs2007\\_3yr/prod/GeographicComparisonTables/](http://www2.census.gov/acs2007_3yr/prod/GeographicComparisonTables/)  
[http://www2.census.gov/acs2007\\_3yr/prod/SelectedPopulationProfiles/](http://www2.census.gov/acs2007_3yr/prod/SelectedPopulationProfiles/)  
[http://www2.census.gov/acs2007\\_3yr/prod/TablesProfilesSubjectTables/](http://www2.census.gov/acs2007_3yr/prod/TablesProfilesSubjectTables/)

#### A. *TablesProfilesSubjectTables*

This directory consists of four separate sub-directories named [*Division, Region, States, and United\_States*]. Each sub-directory contains CSV files, for example, the *United\_States* directory contains; Detailed Tables in the file *DetailedTables\_United\_States.csv*, Data Profiles in the file *Profiles\_United\_States.csv*, Non-Iterated Selected Population Profiles in the file *NoniterSPP\_United\_States.csv* and Subject Tables in the file *Subject\_United\_States.csv*. Also, under the *United\_States* directory, a separate *Components* sub-directory resides which contains directories to CSV files for the United States. These sub-directories contains CSV files for the following Components, and Urban/Rural areas:

Geography Component	Description
01	Urban
43	Rural
52	In metropolitan or micropolitan statistical area
55	Not in metropolitan or micropolitan statistical area
56	In metropolitan statistical area
57	In metropolitan statistical area—in principal city
58	In metropolitan statistical area—not in principal city
59	Not in metropolitan statistical area
60	In micropolitan statistical area
61	In micropolitan statistical area—in principal city
62	In micropolitan statistical area—not in principal city
89	American Indian reservation and trust land –Federal Tribe
91	Oklahoma tribal statistical area
92	Tribal designated statistical area

93	Alaska Native village statistical area
94	State designated American Indian statistical area

Geographic components are available on the ACS FTP site for the nation, region, divisions, and states. A geographic component is the part of a geographic area (e.g., Alabama) that meets a location-based test such as "in a metropolitan area" or "in a rural place". For example, a geographic component of "in metropolitan area" for Texas combines the land area of El Paso, TX MSA, San Antonio, TX MSA and all other metropolitan areas in Texas into a single collective identity. When using data products for geographic components, please be aware that they are only available for some types of geographic areas (e.g., State, Region) and specific geographic components that available for one geographic type may be different from those available for another geographic type.

The *States* directory contains a directory for each state (e.g. Iowa) in each of these state directories there are corresponding state CSV files (For example: [http://www2.census.gov/acs2007\\_3yr/prod/Tables/ProfilesSubjectTables/States/Iowa/DetailedTables/Iowa.csv](http://www2.census.gov/acs2007_3yr/prod/Tables/ProfilesSubjectTables/States/Iowa/DetailedTables/Iowa.csv) or *Subject Iowa.csv*, etc.) and, depending upon the data available in each state, up to 18 subdirectories for the following geographic levels:

Geography summary level	Description
050	State-County
060	State-County-County Subdivision
160	State-Place
230	Alaska Native Regional Corporation
250	American Indian Area/Alaska Native Area/Hawaiian Home Land
310	Metropolitan Statistical Area/Micropolitan Statistical Area
312	Metropolitan Statistical Area/Micropolitan Statistical Area-State-Principal City
314	Metropolitan Statistical Area/Micropolitan Statistical Area-Metropolitan Division
330	Combined Statistical Area
335	Combined New England City and Town Area
350	New England City and Town Area
352	New England City and Town Area-State-Principal City
355	New England City and Town Area (NECTA)-NECTA Division
400	Urban Area
500	State-Congressional District (109th)
795	State-Public Use Microdata Area (5 percent)
950	State-School District (Elementary)
960	State-School District (Secondary)
970	State-School District (Unified)

Within each of the Summary Level directories are four types of files:

1) Detailed Tables – Contains the Detailed Tables released for that geography

The Detailed Table CSV file contains the following file layout:

- Column 1 – Geographic ID Code
- Column 2 – Geographic Name
- Column 3 – Table Number
- Column 4 – Line Number (Order)
- Column 5 – Line Description (Stub)
- Column 6 – Estimate
- Column 7 – Margin of Error

2) Data Profile - Contains four sections; Selected Social Characteristics which contains the profile estimates for selected social characteristics profile; Selected Economic Characteristics which contains the profile estimates for selected economic characteristics; Selected Housing Characteristics which contains the profile estimates for selected housing characteristics; ACS Demographic And Housing Estimates which contains the profile estimates for selected demographic and housing characteristics.

The Data Profile CSV files contains the following file layout:

- Column 1 – Geographic ID Code
- Column 2 – Geographic Name
- Column 3 – Table Number
- Column 4 – Line Number (Order)
- Column 5 – Line Description (Stub)
- Column 6 – Estimate
- Column 7 – Margin of Error
- Column 8 – Percent
- Column 9 – Percent Margin of Error

3) Subject Tables – Contains tables that highlight particular subjects of interest depending on the geography. The Subject Tables may vary depending on the size of the Subject Table.

4) Non-Iterated Selected Population Profiles, which are similar to the Subject Tables, provide detailed information for a population group such as teenagers, people in poverty, the older population, workers, children, grandchildren, and the foreign born. The Non-Iterated Selected Population Profiles may vary in size.

### ***B. Geographic Comparison Tables (GCTs)***

This directory contains GCTs for each published geographic summary level (e.g. [www2.census.gov/acs2007\\_3yr/Prod/GeographyCompTables/CountyUS/](http://www2.census.gov/acs2007_3yr/Prod/GeographyCompTables/CountyUS/)) and a CSV file for each characteristic.

The Geographic Comparison Tables file contains the following file layout:

- Column 1 – Geographic Area
- Column 2 – Estimate
- Column 3 – Margin of Error

A complete list of Geographic Comparison Tables is available for reference at the end of this document in Section VII) The Complete List of Geographic Comparison Tables (GCT).

### C. SelectedPopulationProfiles

Under the Selected Population Profiles directory there will be a subdirectory for each published geographic summary level, within each of these geographic summary level directories there will be a file for each geographic area containing each race/ethnic/ancestry/country of birth iteration that meets the publishable criteria above. By clicking on the link, [http://www2.census.gov/acs2007\\_3yr/prod/SelectedPopulationProfiles/States/Alabama.csv](http://www2.census.gov/acs2007_3yr/prod/SelectedPopulationProfiles/States/Alabama.csv) you can view the Iterated Selected Population Profile CSV files which contain 10 columns of data each (Total Population Iterations do not have columns 5 and 6):

Column 1 – Geographic ID Code

Column 2 – Geographic Name

Column 3 – Iteration ID – for more details on the Iteration ID, including their valid ranges, please reference the following file:

[http://www.census.gov/acs/www/Products/users\\_guide/SPP\\_Iterations\\_3yr.xls](http://www.census.gov/acs/www/Products/users_guide/SPP_Iterations_3yr.xls)

Column 4 – Iteration Description

Column 5 – Line Number (Order)

Column 6 – Line Description (Stub)

Column 7 – Total Population Estimate

Column 8 – Total Population Margin of Error

Column 9 – Iterated Population Estimate

Column 10 – Iterated Population Margin of Error

The Excel file, SPP\_Iterations\_3yr.xls contains three worksheets, which provide information on which Selected Population Profiles are published for what geography and what iteration. This Excel file contains the following two worksheets:

Race - Geography as rows and Race\Hispanic Origin as columns

Ancestry - Geography as rows and Ancestry as columns

Birth - Geography as rows and Country of Birth as columns

If an iterated Selected Population Profiles is published for the specific geography an "X" is placed in that cell.

## IV) Finding Place of Work and Migration Data

### A. POW (Place of Work Tables)

Place of work tables refer to the geographic location at which workers carried out their occupational activities during the reference week. Data users interested in the number and characteristics of workers, who work in a specific area, should use the place of work (workplace-based journey-to-work) tables.

Under the *States* directory there will be a subdirectory for each state. This directory contains two types of data products – Detailed Tables and Subject Tables, which follow the same file layouts and directory structure as described in section III) Finding the Data. In each of these state directories there two are corresponding state CSV files, a set of place of work Detailed Tables and one Subject Table (S0804: Means of Transportation to Work by Selected Characteristics for Workplace Geography). For example: [http://www2.census.gov/acs2007\\_3yr/prod/States/Iowa/Place\\_of\\_Work-State/DetailedTablesIowa.csv](http://www2.census.gov/acs2007_3yr/prod/States/Iowa/Place_of_Work-State/DetailedTablesIowa.csv) and SubjectIowa.csv. The specific state directories contain a directory for each Place of Work

geographic areas. Depending upon the data available in each state, there can be up to 11 subdirectories for the following geographic levels: (Each directory name contains the following suffix: Place\_of\_Work, followed by the POW description. For example: **Place\_of\_Work\_Metropolitan\_Statistical\_Area\_Micropolitan\_Statistical\_Area-State-Principal\_City**)

Geography summary level	Description
050	State-County
060	State-County-County Subdivision
160	State-Place
310	Metropolitan Statistical Area/Micropolitan Statistical Area
312	Metropolitan Statistical Area/Micropolitan Statistical Area-State-Principal City
314	Metropolitan Statistical Area/Micropolitan Statistical Area-Metropolitan Division
330	Combined Statistical Area
335	Combined New England City and Town Area
350	New England City and Town Area
352	New England City and Town Area-State-Principal City
355	New England City and Town Area (NECTA)-NECTA Division

There is a directory for each state with state based geographies indexed under the directory.

## **B. MIG (Migration Tables)**

Migration Tables refer to tables for geographical mobility for residence 1 year ago. These detailed tables include estimates based on outmigration. The estimates are similar to those available for the geographic mobility tables for current residence but instead of using the current location of the respondent they use the location of the respondent one year ago. Forty-two new tables will be available this year. These new tables allow one to determine the characteristics of persons who moved from a specified geographic area in the past year, as well as the characteristics of those who stayed in that area.

Under the *States* directory there will be a subdirectory for each state. This directory contains a set of Detailed Tables, which follow the same file layouts and directory structure as described in section III) Finding the Data. The specific state directories contain Migration directories for each state. In each of these Migration sub-directories there is one corresponding state CSV files (For example: [http://www2.census.gov/acs2007\\_3yr/prod/States/Alabama/Residence\\_1\\_Year\\_Ago-State-County/DetailedTables\\_Autauga\\_County,\\_Alabama.csv](http://www2.census.gov/acs2007_3yr/prod/States/Alabama/Residence_1_Year_Ago-State-County/DetailedTables_Autauga_County,_Alabama.csv)). Depending upon the data available in each state, there can be up to 11 subdirectories for the following geographic levels: (Each directory name contains the following suffix: Residence\_1\_Year\_Ago, followed by the MIG description. For example: **Residence\_1\_Year\_Ago-State-Place**)

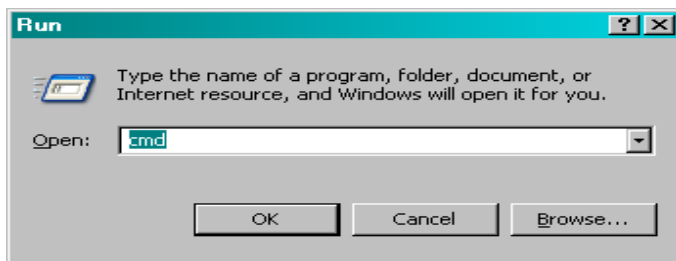
Geography summary level	Description
050	State-County
060	State-County-County Subdivision
160	State-Place
310	Metropolitan Statistical Area/Micropolitan Statistical Area
312	Metropolitan Statistical Area/Micropolitan Statistical Area-State-Principal

	City
314	Metropolitan Statistical Area/Micropolitan Statistical Area-Metropolitan Division
330	Combined Statistical Area
335	Combined New England City and Town Area
350	New England City and Town Area
352	New England City and Town Area-State-Principal City
355	New England City and Town Area (NECTA)-NECTA Division

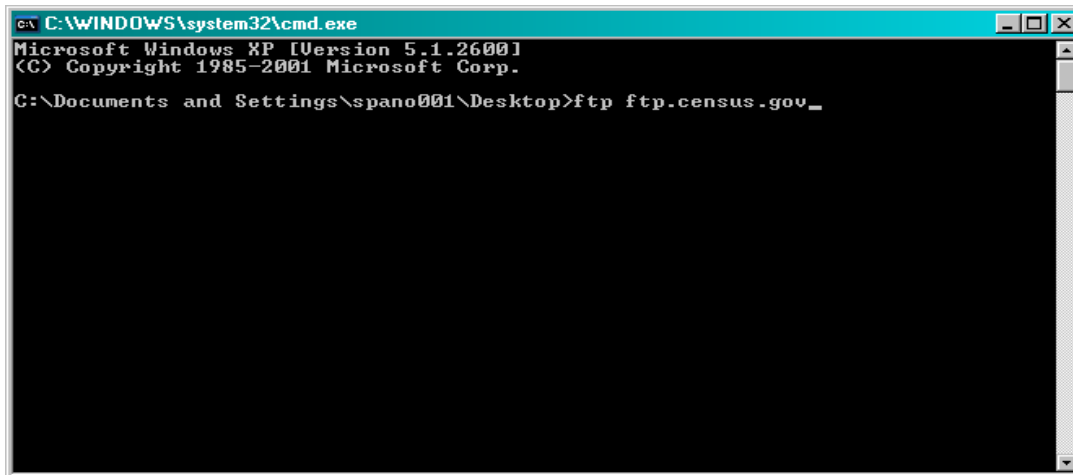
There is a directory for each state with state based geographies indexed under the directory.

## V) Instructions on Connecting to ACS FTP Server

- 1) Click on Start> Run > type cmd > then hit “OK”



- 2) At the prompt, type as illustrate below



- 3) Use the username “ftp” and password “ftp” to access the ACS FTP site.



```

C:\WINDOWS\system32\cmd.exe - ftp ftp.census.gov
Microsoft Windows XP [Version 5.1.2600]
(C) Copyright 1985-2001 Microsoft Corp.

C:\Documents and Settings\spano001\Desktop>ftp ftp.census.gov
Connected to backup03.csvd.census.gov.
220-This is a U.S. Government computer system.
220-THERE IS NO RIGHT OF PRIVACY IN THIS SYSTEM.
220-All data contained herein is owned by the U.S. Government and
220-may be used in any way by authorized personnel.
220-USE OF THIS SYSTEM CONSTITUTES CONSENT TO THE ABOVE.
220-Use of this computer without authorization or for unauthorized purposes is a
220-violation of federal law and punishable by fines or imprisonment (Public Law
99-474).
220-Evidence of crime found on this system will be reported to appropriate autho
rities.
220-Authorized uses only
220
User (backup03.csvd.census.gov:(none)):

```

4) If successfully logging in, you should see the screen like below:

```

C:\WINDOWS\system32\cmd.exe - ftp ftp.census.gov
220-All data contained herein is owned by the U.S. Government and
220-may be used in any way by authorized personnel.
220-USE OF THIS SYSTEM CONSTITUTES CONSENT TO THE ABOVE.
220-Use of this computer without authorization or for unauthorized purposes is a
220-violation of federal law and punishable by fines or imprisonment (Public Law
99-474).
220-Evidence of crime found on this system will be reported to appropriate autho
rities.
220-Authorized uses only
220
User (backup03.csvd.census.gov:(none)): ftp
331 Please specify the password.
Password:
230-Server: ftp2.census.gov
230-
230-Personal Identifiable Information (PII) shall not be placed on the FTP
230-server without prior special arrangement and in conjunction with ITSO.
230-
230-NOTE: The data available for anonymous FTP download on this FTP server is
230-also available over the Web:
230-http://www2.census.gov
230-
230 Login successful.
ftp>

```

## FTP File Transfer

In the UNIX environment, the “mget” command allows the transferring of single or multiple files. Using the ftp command mget, followed by a single filename, will allow a single file to be downloaded. Using the command mget followed by a wildcard character, such as \* or \*. \*, allows multiple files to be downloaded. For example, once you have navigated into the directory for California, you can download all of the spreadsheets in the state-county subdirectory with the following ftp commands:

```

ftp>lcd c:\temp (local path where files from the FTP site will be saved)
ftp>cd acs2007_3yr/prod (path to prod ACS ftp site)
ftp>cd SelectedPopulationProfiles/States (path to a specific directory)
ftp>prompt off (to avoid being asked for verification of each file, optional)
ftp>mget Alabama.csv (to copy a specific single file - file should be now copied to
c:\temp)
ftp>mget *.csv (to copy multiple files)
ftp>quit (to exit ftp)

```

## VI) Special Notes

**1. Display of Jam Values.** Some data values represent unique situations where either: a) the information to be conveyed is an explanation for the absence of data, represented by a symbol in the data display, such as "(X)", or b) the information to be conveyed is an open-ended distribution, such as 115 or greater, represented by 116 or 115+.

The following list shows the special data values for case (a), which can appear in any 2007 ACS table on the FTP Site and on the American FactFinder Website (AFF):

Special Data Values	AFF & FTP Site Display Value	Description
-999999999	N	Indicates that an estimate or its margin of error cannot be provided because the number of sample cases is too small for the given geographic area.
-888888888	(X)	Indicates that the estimate is not applicable or not available.
-777777777	(Z)	Estimate is not available for an undefined reason.
-666666666	-	Indicates that no sample observations were available to compute an estimate, or a ratio of medians cannot be calculated because one or both of the median estimates falls in the lowest interval or upper interval of an open-ended distribution.

The following list shows the special data values for case (b), which can appear in any 2007 ACS Detailed Tables on the FTP Site and on the American FactFinder Website (AFF) containing an open-ended distribution:

Table ID	FTP Site Low Value Display	AFF Low Value Display	FTP Site High Value Display	AFF High Value Display
B01002	0	1-	116	115+
B01002A	0	1-	116	115+
B01002B	0	1-	116	115+
B01002C	0	1-	116	115+
B01002D	0	1-	116	115+
B01002E	0	1-	116	115+
B01002F	0	1-	116	115+
B01002G	0	1-	116	115+
B01002H	0	1-	116	115+
B01002I	0	1-	116	115+
B05004	0	1-	116	115+
B06002	0	1-	116	115+
B06002PR	0	1-	116	115+
B06011	2499	2,500-	100001	100,000+
B06011PR	2499	2,500-	100001	100,000+
B07002	0	1-	116	115+

<b>Table ID</b>	<b>FTP Site Low Value Display</b>	<b>AFF Low Value Display</b>	<b>FTP Site High Value Display</b>	<b>AFF High Value Display</b>
B07002PR	0	1-	116	115+
B07011	2499	2,500-	100001	100,000+
B07011PR	2499	2,500-	100001	100,000+
B07411	2499	2,500-	100001	100,000+
B07411PR	2499	2,500-	100001	100,000+
B08103	0	1-	116	115+
B08121	2499	2,500-	100001	100,000+
B08503	0	1-	116	115+
B08521	2499	2,500-	100001	100,000+
B10010	2499	2,500-	200001	200,000+
B18040	2499	2,500-	100001	100,000+
B18041	2499	2,500-	100001	100,000+
B18042	2499	2,500-	100001	100,000+
B18043	2499	2,500-	100001	100,000+
B18044	2499	2,500-	100001	100,000+
B18045	2499	2,500-	100001	100,000+
B18046	2499	2,500-	100001	100,000+
B19013	2499	2,500-	200001	200,000+
B19013A	2499	2,500-	200001	200,000+
B19013B	2499	2,500-	200001	200,000+
B19013C	2499	2,500-	200001	200,000+
B19013D	2499	2,500-	200001	200,000+
B19013E	2499	2,500-	200001	200,000+
B19013F	2499	2,500-	200001	200,000+
B19013G	2499	2,500-	200001	200,000+
B19013H	2499	2,500-	200001	200,000+
B19013I	2499	2,500-	200001	200,000+
B19019	2499	2,500-	200001	200,000+
B19049	2499	2,500-	200001	200,000+
B19080	2499	2,500-	200000	200,000+
B19081	0	0	250001	250,000+
B19113	2499	2,500-	200001	200,000+
B19113A	2499	2,500-	200001	200,000+
B19113B	2499	2,500-	200001	200,000+
B19113C	2499	2,500-	200001	200,000+
B19113D	2499	2,500-	200001	200,000+
B19113E	2499	2,500-	200001	200,000+
B19113F	2499	2,500-	200001	200,000+
B19113G	2499	2,500-	200001	200,000+
B19113H	2499	2,500-	200001	200,000+
B19113I	2499	2,500-	200001	200,000+
B19119	2499	2,500-	200001	200,000+
B19121	2499	2,500-	200001	200,000+
B19125	2499	2,500-	200001	200,000+

<b>Table ID</b>	<b>FTP Site Low Value Display</b>	<b>AFF Low Value Display</b>	<b>FTP Site High Value Display</b>	<b>AFF High Value Display</b>
B19126	2499	2,500-	200001	200,000+
B19202	2499	2,500-	200001	200,000+
B19202A	2499	2,500-	200001	200,000+
B19202B	2499	2,500-	200001	200,000+
B19202C	2499	2,500-	200001	200,000+
B19202D	2499	2,500-	200001	200,000+
B19202E	2499	2,500-	200001	200,000+
B19202F	2499	2,500-	200001	200,000+
B19202G	2499	2,500-	200001	200,000+
B19202H	2499	2,500-	200001	200,000+
B19202I	2499	2,500-	200001	200,000+
B19215	2499	2,500-	200001	200,000+
B19326	2499	2,500-	100001	100,000+
B20002	2499	2,500-	100001	100,000+
B20004	2499	2,500-	100001	100,000+
B20017	2499	2,500-	100001	100,000+
B20017A	2499	2,500-	100001	100,000+
B20017B	2499	2,500-	100001	100,000+
B20017C	2499	2,500-	100001	100,000+
B20017D	2499	2,500-	100001	100,000+
B20017E	2499	2,500-	100001	100,000+
B20017F	2499	2,500-	100001	100,000+
B20017G	2499	2,500-	100001	100,000+
B20017H	2499	2,500-	100001	100,000+
B20017I	2499	2,500-	100001	100,000+
B21004	2499	2,500-	100001	100,000+
B22008	2499	2,500-	200001	200,000+
B23013	0	1-	116	115+
B24011	2499	2,500-	100001	100,000+
B24012	2499	2,500-	100001	100,000+
B24021	2499	2,500-	100001	100,000+
B24022	2499	2,500-	100001	100,000+
B24031	2499	2,500-	100001	100,000+
B24032	2499	2,500-	100001	100,000+
B24041	2499	2,500-	100001	100,000+
B24042	2499	2,500-	100001	100,000+
B24081	2499	2,500-	100001	100,000+
B24082	2499	2,500-	100001	100,000+
B24091	2499	2,500-	100001	100,000+
B24092	2499	2,500-	100001	100,000+
B25018			9.1/9.0+	9.0+
B25021			9.1/9.0+	9.0+
B25035	1939	1940-	2005	2006+
B25037	1939	1940-	2005	2006+

Table ID	FTP Site Low Value Display	AFF Low Value Display	FTP Site High Value Display	AFF High Value Display
B25039	1969	1970-	2005	2006+
B25057	99	100-	2001	2,000+
B25058	99	100-	2001	2,000+
B25059	99	100-	2001	2,000+
B25064	99	100-	2001	2,000+
B25071	9.9	10.0-	50.1/50.0+	50.0+
B25076	9999	10,000-	1000001	1,000,000+
B25077	9999	10,000-	1000001	1,000,000+
B25078	9999	10,000-	1000001	1,000,000+
B25083	9999	10,000-	1000001	1,000,000+
B25088	99	100-	4001	4,000+
B25092	9.9	10.0-	50.1/50.0+	50.0+
B25097	9999	10,000-	1000001	1,000,000+
B25099	2499	2,500-	200001	200,000+
B25103	199	200-	10001	10,000+
B25105	99	100-	4001	4,000+
B25107	9999	10,000-	1000001	1,000,000+
B25109	9999	10,000-	1000001	1,000,000+
B25111	99	100-	2001	2,000+
B25113	99	100-	2001	2,000+
B25119	2499	2,500-	200001	200,000+

**2. Data release filtering rules.** Filtering rules, based on the statistical reliability of the survey estimates, are used because certain geographic areas contain very detailed tables might include estimates whose reliability is unacceptable. The main data release rule for the ACS tables works as follows. Every base table consists of a series of estimates. If more than half the estimates are not statistically different from 0 (at a 90 percent confidence level), then the table fails. Each estimate is subject to sampling variability that can be summarized by its standard error. Dividing the standard error by the estimate yields the coefficient of variation (CV) for each of the estimates. (If the estimate is 0, a CV of 100 percent is assigned.) To implement this requirement for each table at a given geographic area, CVs are calculated for each of the table's estimates, and the median CV value is determined. If the median CV value for the table is less than or equal to 61 percent, the table passes for that geographic area; if it is greater than 61 percent, the table fails. Tables that are too sparse will fail this test. In that case, the table will not be published for that geographic area. Whenever a table fails, a simpler table that collapses some of the detailed lines together can be substituted for the original, more detailed table. The rules are then applied to the simpler table. If it passes, the simpler table is released. If it fails, none of the estimates for that particular table is released for this geographic area. These rules are applied to single-year period estimates and multi-year period estimates based on three years of sample data.

For a complete list of filtered detailed tables, please reference the following file:  
[http://www2.census.gov/acs2007\\_3yr/prod/filter\\_helper\\_file.txt](http://www2.census.gov/acs2007_3yr/prod/filter_helper_file.txt)

3. Non-Iterated Selected Population Profiles, which are similar to the Subject Tables, and were placed in the same file for the 2007 ACS 1-Year data release but for the 3-year release they were placed in

separate files. A complete list of both of these products is available on section VIII) List of 2005-2007 ACS Subject Tables and Non-Iterated Selected Population Profiles.

4. In the Iterated Selected Population Profile .csv files, all of the means and medians which are expressed in dollars contain a dollar sign “\$”, which is not done currently on AFF or on the 1-year FTP site.

**VII) The Complete List of Geographic Comparison Tables (GCT)**

<b>GCT ID</b>	<b>GCT Title</b>
GCT0101	Median Age of the Total Population
GCT0102	Sex Ratio of the Total Population
GCT0103	Percent of the Total Population Who Are 65 Years and Over
GCT0104	Percent of the Total Population Who Are 85 Years and Over
GCT0105	Age Dependency Ratio of the Total Population
GCT0106	Child Dependency Ratio of the Total Population
GCT0107	Old-Age Dependency Ratio of the Total Population
GCT0201	Percent of the Total Population Who Are White Alone
GCT0202	Percent of the Total Population Who Are Black or African American Alone
GCT0203	Percent of the Total Population Who Are American Indian and Alaska Native Alone
GCT0204	Percent of the Total Population Who Are Asian Alone
GCT0205	Percent of the Total Population Who Are Native Hawaiian and Other Pacific Islander Alone
GCT0206	Percent of the Total Population Who Are Some Other Race Alone
GCT0207	Percent of the Total Population Who Are Two or More Races
GCT0208	Percent of the Total Population Who Are Two or More Races Excluding Some Other Race
GCT0209	Percent of the Total Population Who Are White Alone, Not Hispanic or Latino
GCT0501	Percent of People Who Are Foreign Born
GCT0502	Percent of People Born in Europe
GCT0503	Percent of People Born in Asia
GCT0504	Percent of People Born in Latin America
GCT0505	Percent of People Born in Mexico
GCT0601	Percent of the Native Population Born in their State of Residence (Including Puerto Rico)
GCT0701	Percent of People 1 Year and Over Who Lived in a Different House in Either the U.S. or Puerto Rico 1 Year Ago
GCT0702	Percent of People 1 Year and Over Who Lived in a Different House Within the Same State (Including Puerto Rico) 1 Year Ago
GCT0703	Percent of People 1 Year and Over Who Lived in a Different State (Including Puerto Rico) 1 Year Ago

<b>GCT ID</b>	<b>GCT Title</b>
GCT0801	Mean Travel Time to Work of Workers 16 Years and Over Who Did Not Work at Home (Minutes)
GCT0802	Percent of Workers 16 Years and Over Who Traveled to Work by Car, Truck, or Van--Drove Alone
GCT0803	Percent of Workers 16 Years and Over Who Traveled to Work by Car, Truck, or Van--Carpooled
GCT0804	Percent of Workers 16 Years and Over Who Traveled to Work by Public Transportation (Excluding Taxicab)
GCT0805	Percent of Workers 16 Years and Over Who Worked Outside County of Residence
GCT1001	Percent of Grandparents Responsible for their Grandchildren
GCT1101	Percent of Households That are Married-Couple Families
GCT1102	Percent of Households That are Married-Couple Families With Own Children Under 18 Years
GCT1103	Percent of Households With One or More People Under 18 Years
GCT1104	Percent of Households With One or More People 65 Years and Over
GCT1105	Average Household Size
GCT1201	Percent of Men 15 Years and Over Who Were Never Married
GCT1202	Percent of Women 15 Years and Over Who Were Never Married
GCT1203	Ratio of Unmarried Men 15 to 44 Years per 100 Unmarried Women 15 to 44 Years
GCT1204	Median Age at First Marriage for Men
GCT1205	Median Age at First Marriage for Women
GCT1301	Percent of Women 15 to 50 Years Old Who Had a Birth in the Past 12 Months Who Were Unmarried
GCT1302	Women 15 to 19 Years Old Who Had a Birth in the Past 12 Months (Per 1,000 Women)
GCT1303	Women 15 to 50 Years Old Who Had a Birth in the Past 12 Months (Per 1,000 Women)
GCT1501	Percent of People 25 Years and Over Who Have Completed High School (Includes Equivalency)
GCT1502	Percent of People 25 Years and Over Who Have Completed a Bachelor's Degree
GCT1503	Percent of People 25 Years and Over Who Have Completed an Advanced Degree
GCT1601	Percent of People 5 Years and Over Who Speak a Language Other Than English at Home
GCT1602	Percent of People 5 Years and Over Who Speak Spanish at Home
GCT1603	Percent of People 5 Years and Over Who Speak English Less Than "Very Well"

<b>GCT ID</b>	<b>GCT Title</b>
GCT1701	Percent of People Below Poverty Level in the Past 12 Months (For Whom Poverty Status is Determined)
GCT1702	Percent of Related Children Under 18 Years Below Poverty Level in the Past 12 Months
GCT1703	Percent of People 65 Years and Over Below Poverty Level in the Past 12 Months
GCT1704	Percent of Children Under 18 Years Below Poverty Level in the Past 12 Months (For Whom Poverty Status is Determined)
GCT1801	Percent of People 5 to 20 Years Old With a Disability
GCT1802	Percent of People 21 to 64 Years Old With a Disability
GCT1803	Percent of People 65 Years and Over With a Disability
GCT1901	Median Household Income (In 2007 Inflation-Adjusted Dollars)
GCT1902	Median Family Income (In 2007 Inflation-Adjusted Dollars)
GCT1903	Percent of Households With Retirement Income
GCT1904	Percent of Households With Cash Public Assistance Income
GCT2001	Median Earnings for Male Full-Time, Year-Round Workers (In 2007 Inflation-Adjusted Dollars)
GCT2002	Median Earnings for Female Full-Time, Year-Round Workers (In 2007 Inflation-Adjusted Dollars)
GCT2101	Percent of the Civilian Population 18 Years and Over Who Are Veterans
GCT2301	Percent of People 16 to 64 Years Who Are in the Labor Force (Including Armed Forces)
GCT2302	Percent of Children Under 6 Years Old With All Parents in the Labor Force
GCT2303	Employment/Population Ratio for the Population 16 to 64 Years Old
GCT2304	Percent of Married-Couple Families With Both Husband and Wife in the Labor Force
GCT2401	Percent of Civilian Employed Population 16 Years and Over in Management, Business, and Financial Occupations
GCT2402	Percent of Civilian Employed Population 16 Years and Over in Professional and Related Occupations
GCT2403	Percent of Civilian Employed Population 16 Years and Over in Service Occupations
GCT2404	Percent of Civilian Employed Population 16 Years and Over in the Manufacturing Industry
GCT2405	Percent of Civilian Employed Population 16 Years and Over in the Information Industry
GCT2406	Percent of Civilian Employed Population 16 Years and Over Who Were Private Wage and Salary Workers
GCT2501	Percent of Housing Units That Are Mobile Homes



<b>GCT ID</b>	<b>GCT Title</b>
GCT2502	Percent of Housing Units That Were Built in 2005 or Later
GCT2503	Percent of Housing Units That Were Built in 1939 or Earlier
GCT2504	Percent of Occupied Housing Units That Were Moved Into in 2005 or Later
GCT2505	Percent of Occupied Housing Units With Gas as Principal Heating Fuel
GCT2506	Percent of Occupied Housing Units With Electricity as Principal Heating Fuel
GCT2507	Percent of Occupied Housing Units With Fuel Oil, Kerosene, Etc. as Principal Heating Fuel
GCT2509	Percent of Occupied Housing Units With 1.01 or More Occupants Per Room
GCT2510	Median Housing Value of Owner-Occupied Housing Units (Dollars)
GCT2511	Median Monthly Housing Costs for Owner-Occupied Housing Units With a Mortgage (Dollars)
GCT2512	Percent of Occupied Housing Units that are Owner-Occupied
GCT2513	Percent of Mortgaged Owners Spending 30 Percent or More of Household Income on Selected Monthly Owner Costs
GCT2514	Median Monthly Housing Costs for Renter-Occupied Housing Units (Dollars)
GCT2515	Percent of Renter-Occupied Units Spending 30 Percent or More of Household Income on Rent and Utilities

### **VIII) The Complete List of 2005-2007 ACS Subject Tables and Non-Iterated Selected Population Profiles**

- \*Indicates Non-Iterated Selected Population Profiles, which is sourced from microdata

<b>Table No. Title</b>	<b>Table No. Title</b>
S0101	Age and Sex
S0102*	Population 60 Years and Over in the United States
S0102-PR*	Population 60 Years and Over in Puerto Rico
S0103*	Population 65 Years and Over in the United States
S0103-PR*	Population 65 Years and Over in Puerto Rico
S0501*	Selected Characteristics of the Native and Foreign-Born Populations
S0502*	Selected Characteristics of the Foreign-Born Population by Period of Entry into the United States
S0502-PR*	Selected Characteristics of the Foreign-Born Population by Period of Entry into Puerto Rico
S0503*	Selected Characteristics of the Foreign-Born Population by Region of Birth: Europe
S0504*	Selected Characteristics of the Foreign-Born Population by Region of Birth: Africa, Northern America, and Oceania

<b>Table No. Title</b>	<b>Table No. Title</b>
S0505*	Selected Characteristics of the Foreign-Born Population by Region of Birth: Asia
S0506*	Selected Characteristics of the Foreign-Born Population by Region of Birth: Latin America
S0601	Selected Characteristics of the Total and Native Populations in the United States
S0601-PR	Selected Characteristics of the Total and Native Populations in Puerto Rico
S0701	Geographic Mobility by Selected Characteristics in the United States
S0701-PR	Geographic Mobility by Selected Characteristics in Puerto Rico
S0702	Movers Between Regions
S0801	Commuting Characteristics by Sex
S0802	Means of Transportation to Work by Selected Characteristics
S0804	Means of Transportation to Work by Selected Characteristics for Workplace Geography
S0901*	Children Characteristics
S0902*	Characteristics of Teenagers 15 to 19 Years Old
S1001*	Grandchildren Characteristics
S1002	Grandparents
S1101	Households and Families
S1201	Marital Status
S1301	Fertility
S1401	School Enrollment
S1501	Educational Attainment
S1601	Language Spoken at Home
S1602	Linguistic Isolation
S1603	Characteristics of People by Language Spoken at Home
S1701	Poverty Status in the Past 12 Months
S1702	Poverty Status in the Past 12 Months of Families
S1703*	Selected Characteristics of People at Specified Levels of Poverty in the Past 12 Months
S1801	Disability Characteristics
S1802	Selected Economic Characteristics for the Civilian Noninstitutionalized Population By Disability Status
S1901	Income in the Past 12 Months (in 2007 Inflation-Adjusted Dollars)
S1902	Mean Income in the Past 12 Months (in 2007 Inflation-Adjusted Dollars)
S1903	Median Income in the Past 12 Months (in 2007 Inflation-Adjusted Dollars)
S2001	Earnings in the Past 12 Months (in 2007 Inflation-Adjusted Dollars)
S2002	Median Earnings in the Past 12 Months (in 2007 Inflation-Adjusted Dollars) of Workers by Sex and Women's Earnings as a Percentage of Men's Earnings by Selected Characteristics
S2101	Veteran Status
S2201	Food Stamps

<b>Table No. Title</b>	<b>Table No. Title</b>
S2301	Employment Status
S2302	Employment Characteristics of Families
S2303	Work Status in the Past 12 Months
S2401	Occupation by Sex and Median Earnings in the Past 12 Months (in 2007 Inflation-Adjusted Dollars) for the Civilian Employed Population 16 Years and Over
S2402	Occupation by Sex and Median Earnings in the Past 12 Months (in 2007 Inflation-Adjusted Dollars) for Full-Time, Year-Round Civilian Employed Population 16 Years and Over
S2403	Industry by Sex and Median Earnings in the Past 12 Months (in 2007 Inflation- Adjusted Dollars) for the Civilian Employed Population 16 Years and Over
S2404	Industry by Sex and Median Earnings in the Past 12 Months (in 2007 Inflation- Adjusted Dollars) for Full-Time, Year-Round Civilian Employed Population 16 Years and Over
S2405 I	industry by Occupation for the Civilian Employed Population 16 Years and Over
S2406	Occupation by Class of Worker for the Civilian Employed Population 16 Years and Over
S2407	Industry by Class of Worker for Civilian Employed Population 16 Years and Over
S2408	Class of Worker by Sex and Median Earnings in the Past 12 Months (in 2007 Inflation-Adjusted Dollars) for the Civilian Employed Population 16 Years and Over
S2409	Class of Worker by Sex and Median Earnings in the Past 12 Months (In 2007 Inflation-Adjusted Dollars) for the Full-Time, Year-Round Civilian Employed 16 Years and Over
S2501	Occupancy Characteristics
S2502	Demographic Characteristics for Occupied Housing Units
S2503	Financial Characteristics
S2504	Physical Housing Characteristics for Occupied Housing Units
S2506	Financial Characteristics for Housing Units With a Mortgage
S2507	Financial Characteristics for Housing Units Without a Mortgage
S2601A*	Characteristics of the Group Quarters Population
S2601B*	Characteristics of the Group Quarters Population by Group Quarters Type
S2601C*	Characteristics of the Group Quarters Population in the United States
S2601CPR*	Characteristics of the Group Quarters Population in Puerto Rico