



## **APPENDIX E**

### Detailed Maps of the Tactical Infrastructure Sections Showing Soils





100°58'0"W 100°57'0"W 100°56'0"W 100°55'0"W 100°54'0"W 100°53'0"W

29°21'0"N

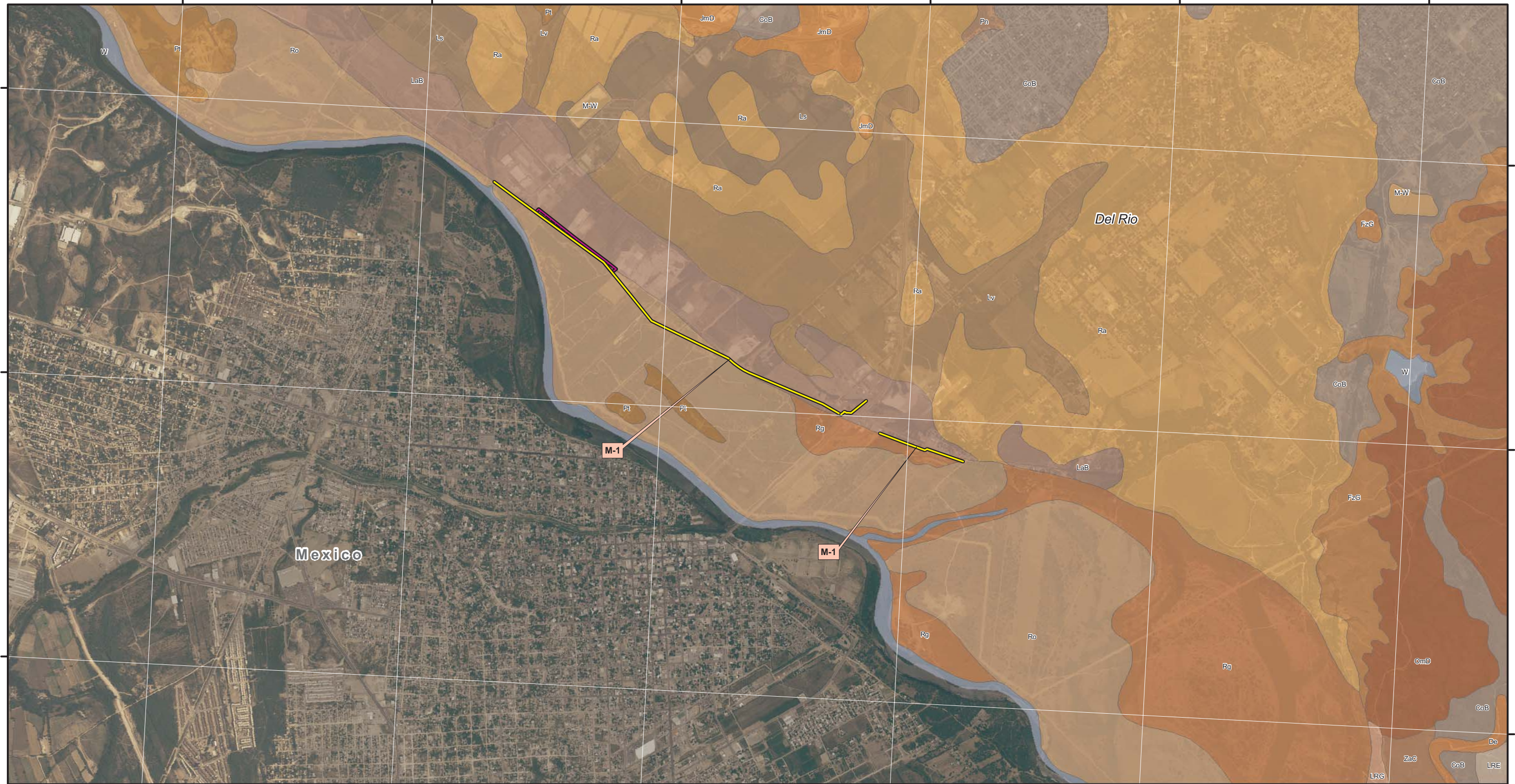
29°20'0"N

29°19'0"N

29°21'0"N

29°20'0"N

29°19'0"N



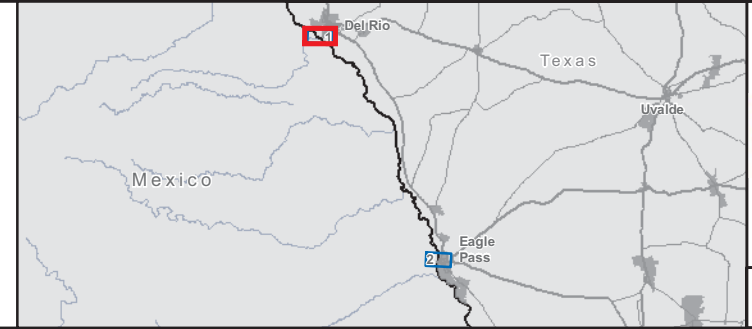
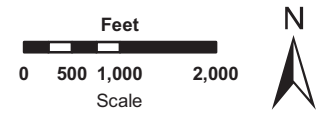
Mexico

Del Rio

- Fence Sections
- Access Roads
- Staging Areas \*

Soil Types

- |   |  |  |
|---|--|--|
| CoB, Coahuila clay loam, 0 to 3 percent slopes                  | LRE, Langtry-Rock outcrop association, rolling       | Pt, Pits   |
| De, Dev soils, frequently flooded                               | LRG, Langtry-Rock outcrop association, very steep    | Ra, Reynosa silty clay loam                            |
| FzG, Felipe and Zorra soils, very rocky, 8 to 40 percent slopes | LaB, Lagloria loam, 0 to 3 percent slopes            | Rg, Rio Grande silt loam, occasionally flooded         |
| JmD, Jimenez-Quemado complex, 1 to 8 percent slopes             | Ls, Laredo silty clay loam                           | Ro, Rio Grande soils, frequently flooded               |
|   | Lv, Laredo variant silty clay loam                   | W, Water   |
|   | M-W, Miscellaneous water                             | ZaC, Zapata-Vinegarroon complex, 1 to 5 percent slopes |
|   | OmD, Olmos very gravelly loam, 1 to 8 percent slopes |  |
|   | Pn, Pintas clay, frequently flooded                  |  |

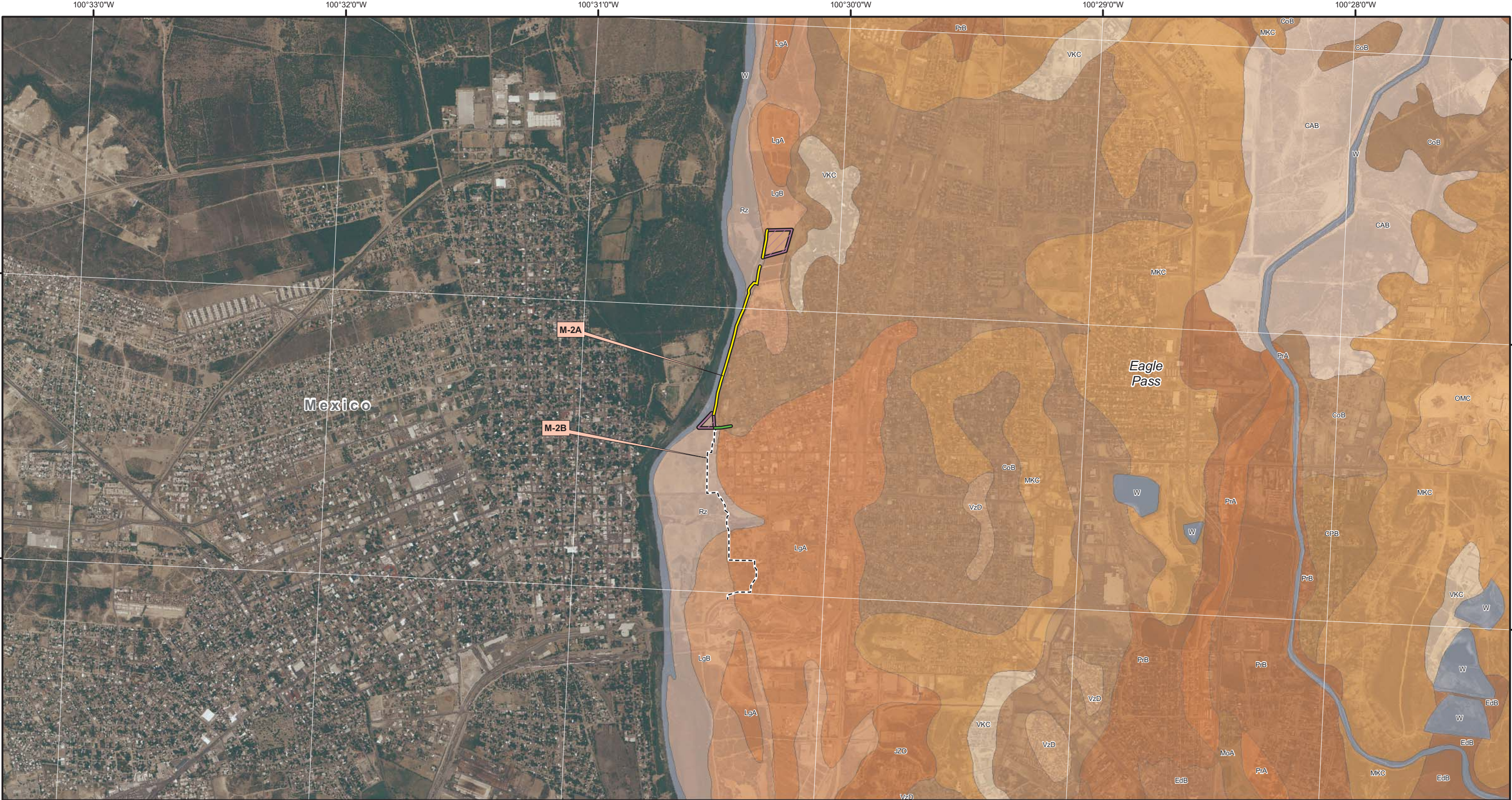


**Environmental Stewardship Plan  
for the Construction, Operation,  
and Maintenance of  
Tactical Infrastructure  
U.S. Border Patrol  
Del Rio Sector, Texas  
Soil Maps  
Version 1**

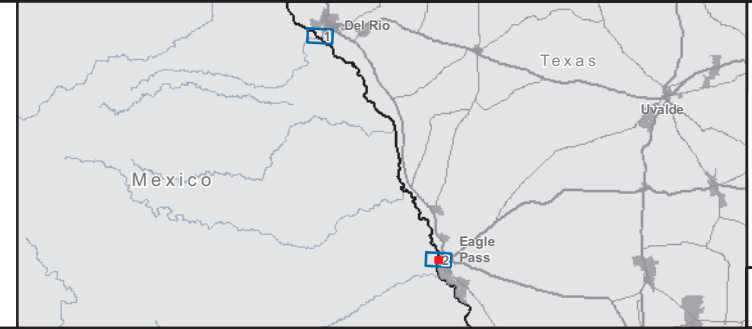
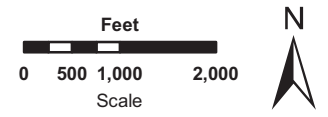
Projection: Albers  
USA Contiguous Albers Equal Area Conic  
North American Datum of 1983


May 20, 2008 Scale 1" = 2000' Map 1 of 2

\*Staging area is based on a file provided from USACE Galveston District on 31 March 2008 via e-mail and reconfirmed on 6 June 2008.



- Fence Sections
  - Access Roads
  - Staging Areas
  - Previously Approved Fence Section - M-2B, Not Part of Project
- Soil Types**
- CAB, Catarina association, gently undulating
  - CPB, Copita association, gently undulating
  - CoB, Copita sandy clay loam, 1 to 3 percent slopes
  - EdA, Elindio silty clay loam, 0 to 1 percent slopes
  - EdB, Elindio silty clay loam, 1 to 3 percent slopes
  - JZD, Jimenez association, rolling
  - LgA, Lagloria very fine sandy loam, 0 to 1 percent slopes
  - LgB, Lagloria very fine sandy loam, 1 to 3 percent slopes
  - MKC, Maverick association, undulating
  - MdB, Maverick clay, 1 to 3 percent slopes
  - MoA, Montell clay, 0 to 1 percent slopes
  - OMC, Olmos association, undulating
  - PrA, Pryor clay loam, 0 to 1 percent slopes
  - PrB, Pryor clay loam, 1 to 3 percent slopes
  - Rz, Rio Grande and Zalla soils, frequently flooded
  - VKC, Verick association, undulating
  - VzD, Verick and Zapata soils, 1 to 8 percent slopes
  - W, Water





**Environmental Stewardship Plan  
for the Construction, Operation,  
and Maintenance of  
Tactical Infrastructure  
U.S. Border Patrol  
Del Rio Sector, Texas  
Soil Maps  
Version 1**

Projection: Albers  
USA Contiguous Albers Equal Area Conic  
North American Datum of 1983

May 20, 2008	Scale 1" = 2000'	Map 2 of 2
--------------	------------------	------------