

ID	Project	Task Name	Resource Names	Duration	Work	Start	July							August					September				October		November		
							6/24	7/1	7/8	7/15	7/22	7/29	8/5	8/12	8/19	8/26	9/2	9/9	9/16	9/23	9/30	10/7	10/14	10/21	10/28	11/4	
1	comt	Anderson		101 days	11,672 hrs	Fri 6/1/07																					
1	ba	Two man watch until summer shutdown starts	:AS[800%]	21 days	1,344 hrs	Fri 6/1/07																					
2	ba	One man watch for the summer shutdown	:AS[400%]	75 days	2,400 hrs	Mon 7/9/07																					
3	ba	Assist with RF group endeavors	CAS	101 days	808 hrs	Fri 6/1/07																					
4	ba	Modify bipolar 300 a. ps's	:AS[200%]	80 days	1,280 hrs	Mon 7/2/07																					
5	ba	Assist Tony Curcio with RHIC BPM's	:AS[200%]	79 days	1,264 hrs	Mon 7/2/07																					
6	ba	Assist Pablo Rosas with various modifications in CA	:AS[200%]	101 days	1,616 hrs	Fri 6/1/07																					
7	ba	Cable ID for pulling crew	CAS[50%]	80 days	320 hrs	Mon 7/2/07																					
8	ba	Sort parts and spares	CAS	15 days	120 hrs	Tue 7/10/07																					
9	ba	Repair ATR one wire temp. system	CAS	10 days	80 hrs	Mon 7/16/07																					
10	ba	Remove PCB caps from ATR line UD1&2,UQ14 sup	CAS	14 days	112 hrs	Mon 8/6/07																					
11	ba	Remove PCB caps from supplies	CAS	15 days	120 hrs	Mon 8/20/07																					
12	ba	Electrical inspection and inventory	CAS	70 days	560 hrs	Tue 7/3/07																					
13	ba	LOTO for summer shutdown	:AS[400%]	5 days	160 hrs	Mon 7/2/07																					
14	ba	Oil fans in rear of 1MW ps's	CAS	2 days	16 hrs	Mon 8/20/07																					
15	ba	Tighten caps. On 1MW supplies	CAS	3 days	24 hrs	Wed 8/22/07																					
16	ba	Check damping resistors on 15KW and 25KW in AT	CAS	10 days	80 hrs	Mon 8/27/07																					
17	ba	Tighten circuit breakers and check connections on I	CAS	10 days	80 hrs	Mon 8/6/07																					
18	ba	Check free wheeling diodes I 1MW supplies	CAS	1 day	8 hrs	Fri 8/17/07																					
19	ba	Diacom battery and system checks	CAS	15 days	120 hrs	Mon 8/27/07																					
20	ba	Work on cable database and cable oannels above M	CAS	30 days	240 hrs	Mon 8/13/07																					
21	ba	Repair various spares for next run, Toldo boxes, ph	CAS	15 days	120 hrs	Mon 8/20/07																					
22	ba	Two man CAS watch for initial NSRL turn-on	:AS[400%]	10 days	320 hrs	Mon 8/20/07																					
23	ba	RHIC white sheets	:AS[400%]	10 days	320 hrs	Mon 10/1/07																					
24	ba	NSRL white sheets	:AS[200%]	10 days	160 hrs	Mon 8/20/07																					
2	comt	Javidfar		5 days	120 hrs	Mon 8/6/07																					
1	aj	930 Pit #2 Removals	ers[300%]	5 days	120 hrs	Mon 8/6/07																					
3	comt	Karl		85.5 days?	1,072 hrs	Fri 6/29/07																					
1	fxK	Survey HEBT Berm	vey[200%]	3 days	48 hrs	Fri 6/29/07																					
2	fxK	STAR Trucks	vey[200%]	15.5 days	208 hrs	Fri 6/29/07																					
3	fxK	12 O'clock vertical survey	Survey	5 days?	40 hrs	Mon 7/16/07																					
4	fxK	Horizontal Survey	Survey	60 days?	480 hrs	Mon 7/23/07																					
5	fxK	ERL Floor survey	Survey	3 days	24 hrs	Fri 7/6/07																					
6	fxK	ERL support	Survey	9 days?	72 hrs	Tue 7/10/07																					
7	fxK	Install Roman Pots	Survey	5 days?	40 hrs	Mon 10/1/07																					
8	fxK	Support plant engineering	Survey	6 days?	48 hrs	Fri 7/6/07																					
9	fxK	RHIC BPM Location Phenix	Survey	4 days?	32 hrs	Wed 8/22/07																					
10	fxK	Support Beam Componants Group (Stocastic Coole	Survey	10 days?	80 hrs	Mon 10/8/07																					
4	comt	Kobasiuk		40 days?	384 hrs	Mon 8/6/07																					
1	fk	Insulate/patch EEBA RH # 1	ers[200%]	4 days	64 hrs	Mon 8/6/07																					
2	fk	Install security cages	Carpenters	5 days?	40 hrs	Mon 8/27/07																					
3	fk	Remove walkway 923	Carpenters	3 days?	24 hrs	Mon 8/20/07																					
4	fk	Complete office 922	Carpenters	5 days?	40 hrs	Mon 8/13/07																					
5	fk	Repair holes in building	Carpenters	5 days?	40 hrs	Mon 8/20/07																					
6	fk	Clear and move carp shop	Carpenters	5 days?	40 hrs	Mon 8/13/07																					
7	fk	Move carp shop	Riggers	1 day	8 hrs	Thu 8/16/07																					
8	fk	Install ladder in mantrench WS EEBA	Carpenters	5 days?	40 hrs	Mon 9/10/07																					
9	fk	Remove trench cover Mantrench EEBA	Riggers	1 day?	8 hrs	Fri 9/14/07																					
10	fk	Remove decking EEBA RECT #2	Carpenters	5 days?	40 hrs	Mon 9/24/07																					

Project: combined04
Date: Wed 8/8/07

Task Progress Summary External Tasks Deadline

Split Milestone Project Summary External Milestone

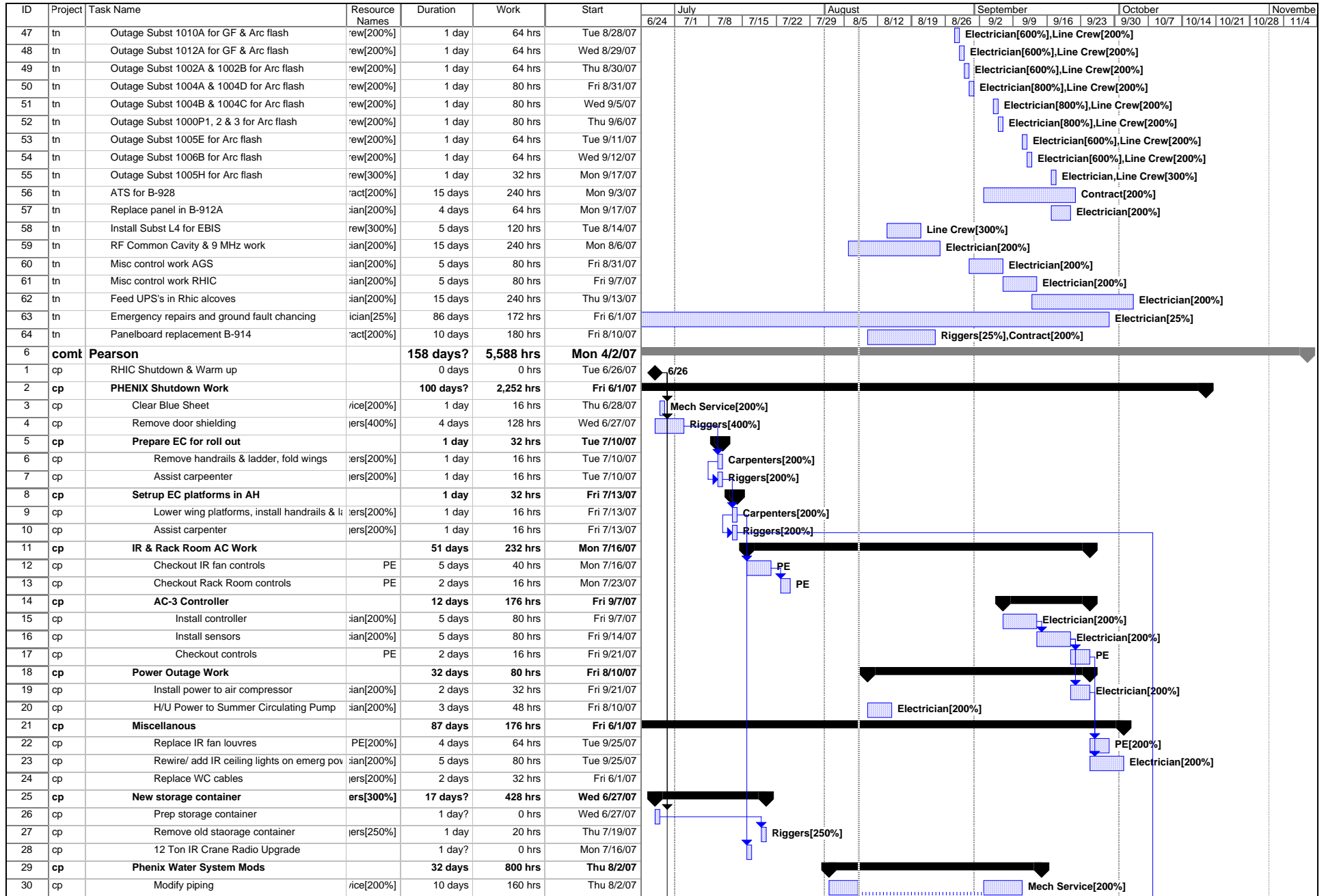
Page 1

ID	Project	Task Name	Resource Names	Duration	Work	Start	July		August				September			October		November			
							6/24	7/1	7/8	7/15	7/22	7/29	8/5	8/12	8/19	8/26	9/2	9/9	9/23	9/30	10/7
11	fk	Remove EEBA RECT HSE #2	Riggers	2 days?	16 hrs	Thu 8/16/07															
12	fk	Remove skirting EEBA RECT HSE #2	Carpenters	3 days?	24 hrs	Mon 9/17/07															
5	comk	Nehring		89 days	8,728 hrs	Fri 6/1/07															
1	tn	Vacation / reassignment to line crew	ian[300%]	40 days	960 hrs	Mon 7/9/07															
2	tn	Prepare LINAC Source Lab	ian[200%]	15 days	240 hrs	Mon 6/4/07															
3	tn	Relamp RHIC	ian[400%]	10 days	320 hrs	Mon 7/2/07															
4	tn	Outage Subst 925 for Arc flash	ew[200%]	1 day	64 hrs	Wed 6/20/07															
5	tn	Repair Cable tray and remove cable	act[450%]	66 days	2,376 hrs	Fri 6/1/07															
6	tn	Field survey for Arc Flash 1	ian[300%]	12 days	288 hrs	Mon 6/4/07															
7	tn	Field survey for Arc Flash 2	ian[300%]	7 days	168 hrs	Thu 6/21/07															
8	tn	Prep for PM Subst SB's & M1, M3, M5	ian[200%]	1 day	16 hrs	Mon 7/9/07															
9	tn	Outage Subst SB's & M1, M3, M5 for PM	ew[200%]	3 days	144 hrs	Tue 7/10/07															
10	tn	Post PM Subst SB's & M1, M3, M5	ian[200%]	1 day	16 hrs	Fri 7/13/07															
11	tn	Outage Subst C for GF & Arc flash	ew[200%]	1 day	64 hrs	Tue 7/10/07															
12	tn	Outage Subst J3 for GF & Arc flash	ian[600%]	1 day	64 hrs	Wed 7/11/07															
13	tn	Outage Subst D for GF & Arc flash	ew[200%]	1 day	64 hrs	Thu 7/12/07															
14	tn	Outage Subst F3 for GF & Arc flash	ew[200%]	1 day	64 hrs	Fri 7/13/07															
15	tn	Outage Subst F1 & F2 for Arc flash	ew[200%]	1 day	80 hrs	Mon 7/16/07															
16	tn	Prep for PM Subst Q, 913R	Electrician	1 day	8 hrs	Tue 7/17/07															
17	tn	Evening Outage Subst Q, 913R for GF & Arc flash	ew[200%]	1 day	64 hrs	Tue 7/17/07															
18	tn	Post PM Subst Q, 913R	ian[200%]	1 day	16 hrs	Wed 7/18/07															
19	tn	Outage Subst E for GF & Arc flash	ian[600%]	1 day	64 hrs	Thu 7/19/07															
20	tn	Prep for PM Subst A, B, 911N	ian[200%]	1 day	16 hrs	Fri 7/20/07															
21	tn	Saturday Outage Subst A, B, 911N for Maint, GF &	ew[200%]	1 day	80 hrs	Mon 7/23/07															
22	tn	Prep for PM Subst N4, N5/6	ian[200%]	1 day	16 hrs	Mon 7/23/07															
23	tn	Outage Subst N4, N5/6 for Maint, GF & Arc flash	ew[200%]	2 days	128 hrs	Tue 7/24/07															
24	tn	Post PM Subst N4, N5/6	ian[200%]	1 day	16 hrs	Thu 7/26/07															
25	tn	Outage Subst G for GF & Arc flash	ew[200%]	1 day	64 hrs	Thu 7/26/07															
26	tn	Outage Subst Tandem 1 for Arc Flash	ian[200%]	1 day	32 hrs	Thu 7/26/07															
27	tn	Outage Subst P1 & P2 for Arc flash	ew[200%]	1 day	80 hrs	Fri 7/27/07															
28	tn	Outage Subst Tandem 2 for Arc Flash	ian[200%]	1 day	32 hrs	Fri 7/27/07															
29	tn	Outage Subst K1 & K2 for Arc flash	ew[200%]	1 day	80 hrs	Mon 7/30/07															
30	tn	Outage Subst H1 for GF & Arc flash	ew[200%]	1 day	64 hrs	Tue 7/31/07															
31	tn	Disconnect Cryo compressor from H1	Crew[50%]	1 day	8 hrs	Tue 7/31/07															
32	tn	Outage Subst H2 for GF & Arc flash	ew[200%]	1 day	64 hrs	Wed 8/1/07															
33	tn	Outage Subst R for GF & Arc flash	ew[200%]	1 day	64 hrs	Thu 8/2/07															
34	tn	Prep for PM Subst MG, 1005 MCC	ian[200%]	1 day	16 hrs	Mon 8/6/07															
35	tn	Outage Subst 1005 MCC for Maint & Arc flash	ian[200%]	1 day	32 hrs	Tue 8/7/07															
36	tn	Outage Subst MG for Maint, GF & Arc flash	ew[200%]	1 day	64 hrs	Wed 8/8/07															
37	tn	Outage Subst R for GF & Arc flash	ew[200%]	1 day	64 hrs	Thu 8/9/07															
38	tn	Prep for PM Subs BAF-1&2, L1,2&3	ian[200%]	1 day	16 hrs	Fri 8/10/07															
39	tn	Outage Subst BAF 1&2 for Maint, GF & Arc flash	ian[400%]	2 days	96 hrs	Mon 8/13/07															
40	tn	Outage Subst L1,2&3 for Maint, GF & Arc flash	ew[200%]	4 days	256 hrs	Tue 8/14/07															
41	tn	Tap 13.8kV for EBIS Feed, L4 subst	ew[200%]	2 days	32 hrs	Wed 8/15/07															
42	tn	Tap 480V for EBIS RF feed	ian[200%]	2 days	64 hrs	Thu 8/16/07															
43	tn	Outage Subst 1006A for GF	ew[200%]	1 day	64 hrs	Tue 8/21/07															
44	tn	Outage Subst 1006C for GF & Arc flash	ew[200%]	1 day	64 hrs	Wed 8/22/07															
45	tn	Outage Subst 1008A for Arc flash	ew[200%]	1 day	64 hrs	Thu 8/23/07															
46	tn	Outage Subst 1008B for Arc flash	ew[200%]	1 day	64 hrs	Fri 8/24/07															

Project: combined04
Date: Wed 8/8/07

Task Progress Summary External Tasks Deadline

 Split Milestone Project Summary External Milestone



Project: combined04
Date: Wed 8/8/07



ID	Project	Task Name	Resource Names	Duration	Work	Start	July							August				September			October			November					
							6/24	7/1	7/8	7/15	7/22	7/29	8/5	8/12	8/19	8/26	9/2	9/9	9/16	9/23	9/30	10/7	10/14	10/21	10/28	11/4			
80	cp	Cooling air system		79 days	120 hrs	Mon 6/11/07																							
81	cp	Purchase parts		10 days	0 hrs	Mon 6/11/07																							
82	cp	Assemble parts	ch Service	5 days	40 hrs	Mon 7/2/07																							
83	cp	Install in tunnel	rice[200%]	5 days	80 hrs	Fri 9/21/07																							
84	cp	Video System		2 days?	0 hrs	Mon 5/14/07																							
85	cp	Purchase system		1 day?	0 hrs	Mon 5/14/07																							
86	cp	Installation in tunnel		1 day?	0 hrs	Tue 5/15/07																							
87	cp	Motor Controls		20 days	240 hrs	Fri 9/21/07																							
88	cp	Hookup at Pots	ian[200%]	10 days	160 hrs	Fri 9/21/07																							
89	cp	Run & Test	ian[200%]	5 days	80 hrs	Fri 10/12/07																							
90																													
91	cp	NSRL		69 days?	208 hrs	Fri 6/1/07																							
92	cp	Operator-free Access System		1 day?	0 hrs	Fri 6/1/07																							
93	cp	Large Beam Preparations		1 day?	0 hrs	Fri 6/1/07																							
94	cp	Floor Repairs		1 day?	0 hrs	Fri 6/1/07																							
95	cp	Isolate/Drain Water System	ms[200%]	2 days	32 hrs	Mon 8/27/07																							
96	cp	Install EBIS Crossover Piping	ers[200%]	4 days	64 hrs	Wed 8/29/07																							
97	cp	Fill/Test System	ms[200%]	2 days	32 hrs	Tue 9/4/07																							
98	cp	Tower/Pump Maintenance	ms[200%]	5 days	80 hrs	Mon 7/23/07																							
99																													
100	cp	RHIC		112 days?	1,328 hrs	Fri 6/1/07																							
101	cp	Open access shielding	ers[300%]	2 days	48 hrs	Wed 6/27/07																							
102	cp	RF Cavity Installation		1 day?	0 hrs	Fri 6/1/07																							
103	cp	Drain/Disc/Repipe/Test RF Cavity Cooling	ms[200%]	10 days	160 hrs	Mon 7/9/07																							
104	cp	Stochastic Cooler at 12 O'Clock		1 day?	0 hrs	Fri 6/1/07																							
105	cp	RF Blockhouse		1 day?	0 hrs	Fri 6/1/07																							
106	cp	Hub Room HVAC		1 day?	0 hrs	Fri 6/1/07																							
107	cp	Bldg 1006A AC Upgrade		1 day?	0 hrs	Fri 6/1/07																							
108	cp	Install new AC-1 Condensor Unit		1 day?	0 hrs	Fri 6/1/07																							
109	cp	Install new Ac-2 condensor Unit		1 day?	0 hrs	Fri 6/1/07																							
110	cp	Service Bldg AC		1 day?	0 hrs	Fri 6/1/07																							
111	cp	Bldg 1004B AC		1 day?	0 hrs	Fri 6/1/07																							
112	cp	Bldg 1010A AC		1 day?	0 hrs	Fri 6/1/07																							
113	cp	Bldg 1012A AC		1 day?	0 hrs	Fri 6/1/07																							
114	cp	Compressed air system upgrade		77 days	288 hrs	Mon 7/2/07																							
115	cp	Install CA @ 1005E/1007W	ers[200%]	6 days	96 hrs	Mon 7/2/07																							
116	cp	Install Isolating Valves	ms[200%]	12 days	192 hrs	Mon 10/1/07																							
117	cp	Tower #7 Filtering		102 days?	784 hrs	Fri 6/1/07																							
118	cp	Install Basin Piping	ers[200%]	10 days	160 hrs	Tue 7/10/07																							
119	cp	Install Sand Filters	ers[300%]	1 day	24 hrs	Thu 7/12/07																							
120	cp	H/U Filter Piping	ers[200%]	5 days	80 hrs	Tue 7/24/07																							
121	cp	H/U Filter Power	ian[200%]	5 days	80 hrs	Tue 10/2/07																							
122	cp	H/U Controls/Test	ms[200%]	10 days	160 hrs	Tue 10/9/07																							
123	cp	Tower 7 Maintenance	ms[200%]	10 days	160 hrs	Mon 7/2/07																							
124	cp	Tower 7 Maintenance	Carpenters	10 days	80 hrs	Mon 7/30/07																							
125	cp	1006 air dryer		3 days	40 hrs	Fri 6/1/07																							
126	cp	Install dryer	PE[200%]	2 days	32 hrs	Fri 6/1/07																							
127	cp	Checkout	PE	1 day	8 hrs	Tue 6/5/07																							
128	cp	Inspection for leaks		1 day?	0 hrs	Fri 6/1/07																							

Project: combined04
Date: Wed 8/8/07

Task Progress Summary External Tasks Deadline

Split Milestone Project Summary External Milestone

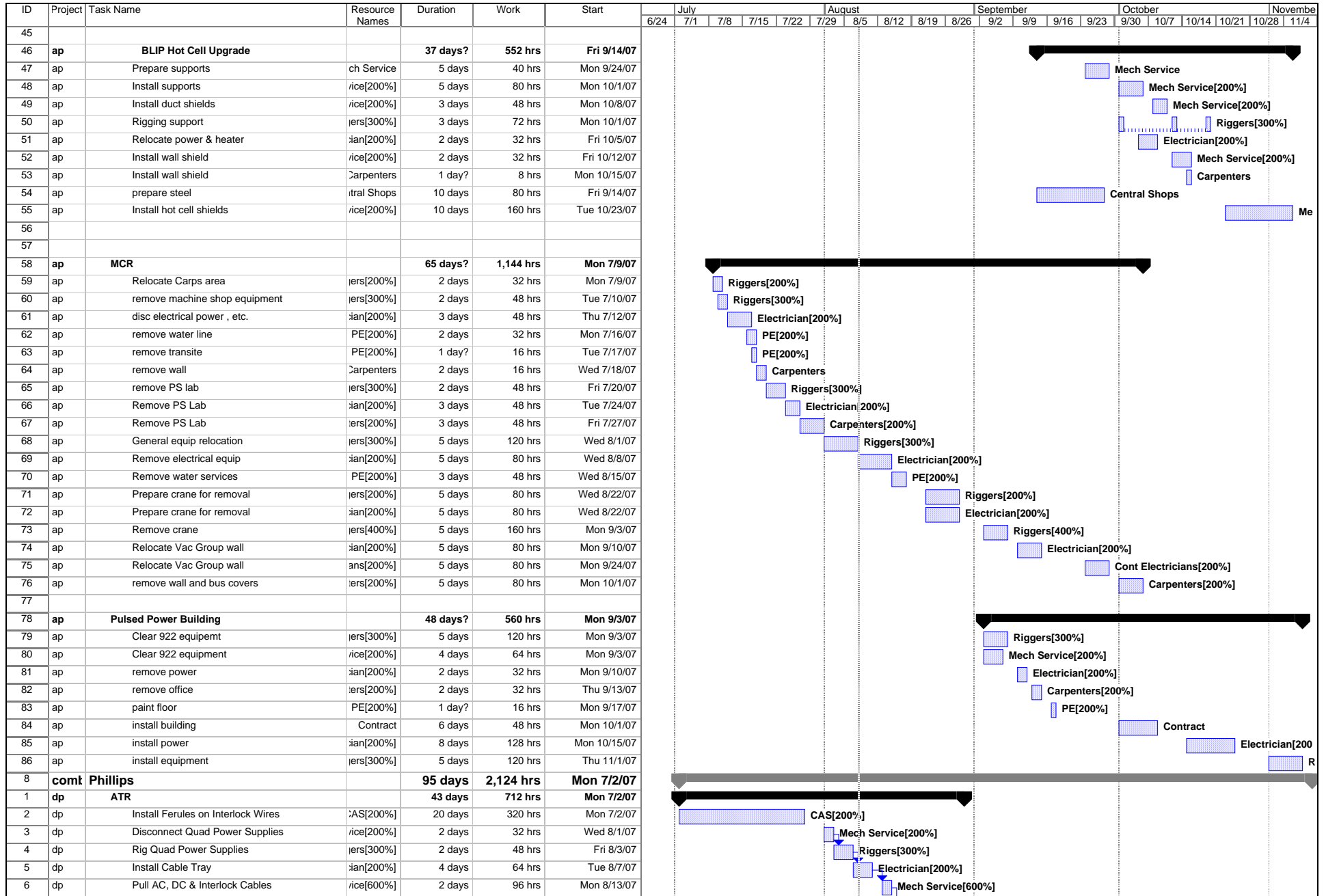
Page 5

ID	Project	Task Name	Resource Names	Duration	Work	Start	July							August					September				October			November														
							6/24	7/1	7/8	7/15	7/22	7/29	8/5	8/12	8/19	8/26	9/2	9/9	9/16	9/23	9/30	10/7	10/14	10/21	10/28	11/4														
129	cp	ODH Fan Access Platforms		1 day?	0 hrs	Fri 6/1/07																																		
130	cp	Paving to Bldg 1007W		1 day?	0 hrs	Fri 6/1/07																																		
131	cp	Close access shielding	ers[300%]	2 days	48 hrs	Fri 11/2/07																																		
132	cp	RHIC Startup		0 days	0 hrs	Thu 11/8/07																																		
7	comt	Pendzick		96 days?	4,152 hrs	Wed 6/27/07																																		
1																																								
2	ap	STAR		82 days?	1,896 hrs	Wed 6/27/07																																		
3	ap	Remove detectors		6 days	0 hrs	Wed 6/27/07																																		
4	ap	Install Hillman trucks	rice[200%]	3 days	48 hrs	Wed 6/27/07																																		
5	ap	Disc STAR utilities	rice[200%]	2 days	32 hrs	Mon 7/2/07																																		
6	ap	Disc STAR utilities	ian[200%]	1 day?	16 hrs	Tue 7/3/07																																		
7	ap	Disc Vacuum	Technician	2 days	16 hrs	Fri 6/29/07																																		
8	ap	Remove shield wall	ers[400%]	3 days	96 hrs	Mon 7/2/07																																		
9	ap	Pull pole tips	rice[200%]	2 days	32 hrs	Fri 7/6/07																																		
10	ap	Survey STAR	vey[200%]	5 days	80 hrs	Thu 7/12/07																																		
11	ap	Roll STAR into AB	rice[200%]	5 days	80 hrs	Fri 7/13/07																																		
12	ap	Install utilities	Electrician	1 day?	8 hrs	Fri 7/20/07																																		
13	ap	Install SVT platform	ers[200%]	2 days	32 hrs	Fri 7/20/07																																		
14	ap	Install SVT platform	ers[300%]	1 day	24 hrs	Fri 7/20/07																																		
15	ap	Install SVT platform	rice[200%]	1 day?	16 hrs	Fri 7/20/07																																		
16	ap	Install utilities	rice[200%]	0.5 days?	8 hrs	Mon 7/23/07																																		
17	ap	EEMC maintenance		25 days	0 hrs	Fri 7/20/07																																		
18	ap	Remove detectors	rice[200%]	5 days	80 hrs	Tue 7/24/07																																		
19	ap	Remove detectors		6 days	0 hrs	Tue 7/24/07																																		
20	ap	Remove SSD, SVT, rebuild cone	rice[200%]	11 days	176 hrs	Tue 7/31/07																																		
21	ap	Reinstall cone, remove rails & platform	rice[200%]	5 days	80 hrs	Wed 8/15/07																																		
22	ap	Reinstall cone, remove rails & platform		5 days	0 hrs	Wed 8/15/07																																		
23	ap	Remove SVT cables and RDO's		5 days	0 hrs	Thu 8/16/07																																		
24	ap	Disc utilities	rice[200%]	2 days	32 hrs	Wed 8/22/07																																		
25	ap	Disc power	Electrician	1 day	8 hrs	Thu 8/23/07																																		
26	ap	Roll STAR into IR	rice[200%]	3 days	48 hrs	Thu 8/23/07																																		
27	ap	Hookup utilities	rice[200%]	3 days	48 hrs	Tue 8/28/07																																		
28	ap	Hookup power	Electrician	1 day	8 hrs	Wed 8/29/07																																		
29	ap	Relocate chillers to AB	rice[200%]	4 days	64 hrs	Tue 9/4/07																																		
30	ap	STAR returned to IR		0 days	0 hrs	Fri 9/7/07																																		
31	ap	TPC electronics maintenance		22 days	0 hrs	Mon 9/10/07																																		
32	ap	Vacumn hookup	ian[200%]	10 days	160 hrs	Mon 9/17/07																																		
33	ap	Install shield wall	ers[300%]	3 days	72 hrs	Tue 9/18/07																																		
34	ap	SGIS checkout	rice[400%]	3 days	96 hrs	Fri 9/21/07																																		
35	ap	Install pole tips	rice[200%]	2 days	32 hrs	Wed 9/19/07																																		
36	ap	PS R&T	AS[200%]	5 days	80 hrs	Tue 9/25/07																																		
37	ap	Install fall protection anchors	ers[200%]	2 days	32 hrs	Mon 9/3/07																																		
38	ap	Install Filter House slab	PE[300%]	1 day?	24 hrs	Mon 9/3/07																																		
39	ap	Install Sand Filter	ms[200%]	3 days	48 hrs	Wed 9/12/07																																		
40	ap	Hookup Filter Piping	PE[200%]	4 days	64 hrs	Mon 9/17/07																																		
41	ap	Hookup Filter Power	ian[200%]	4 days	64 hrs	Wed 10/3/07																																		
42	ap	Hookup Controls/Startup	ms[200%]	4 days	64 hrs	Mon 10/15/07																																		
43	ap	Disc/remove air handler	PE[200%]	3 days	48 hrs	Mon 10/1/07																																		
44	ap	Install/hookup new air-handler	PE[200%]	5 days	80 hrs	Mon 10/8/07																																		

Project: combined04
Date: Wed 8/8/07

Task Progress Summary External Tasks Deadline

Split Milestone Project Summary External Milestone

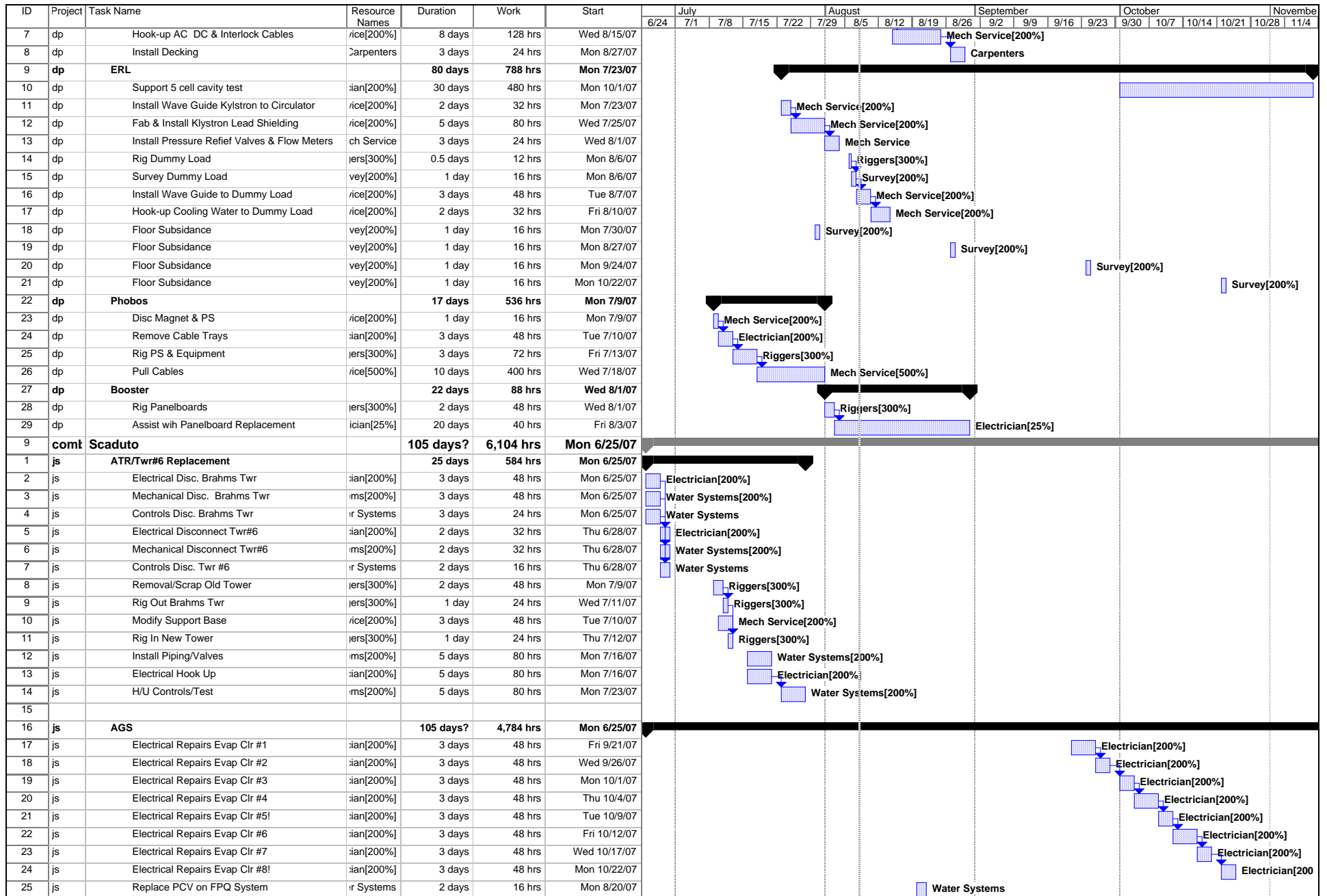


Project: combined04
Date: Wed 8/8/07

Task Progress Summary External Tasks Deadline

Split Milestone Project Summary External Milestone

Page 7



Project: combined04
Date: Wed 8/8/07

Task		Progress		Summary		External Tasks		Deadline	
Split		Milestone		Project Summary		External Milestone			

