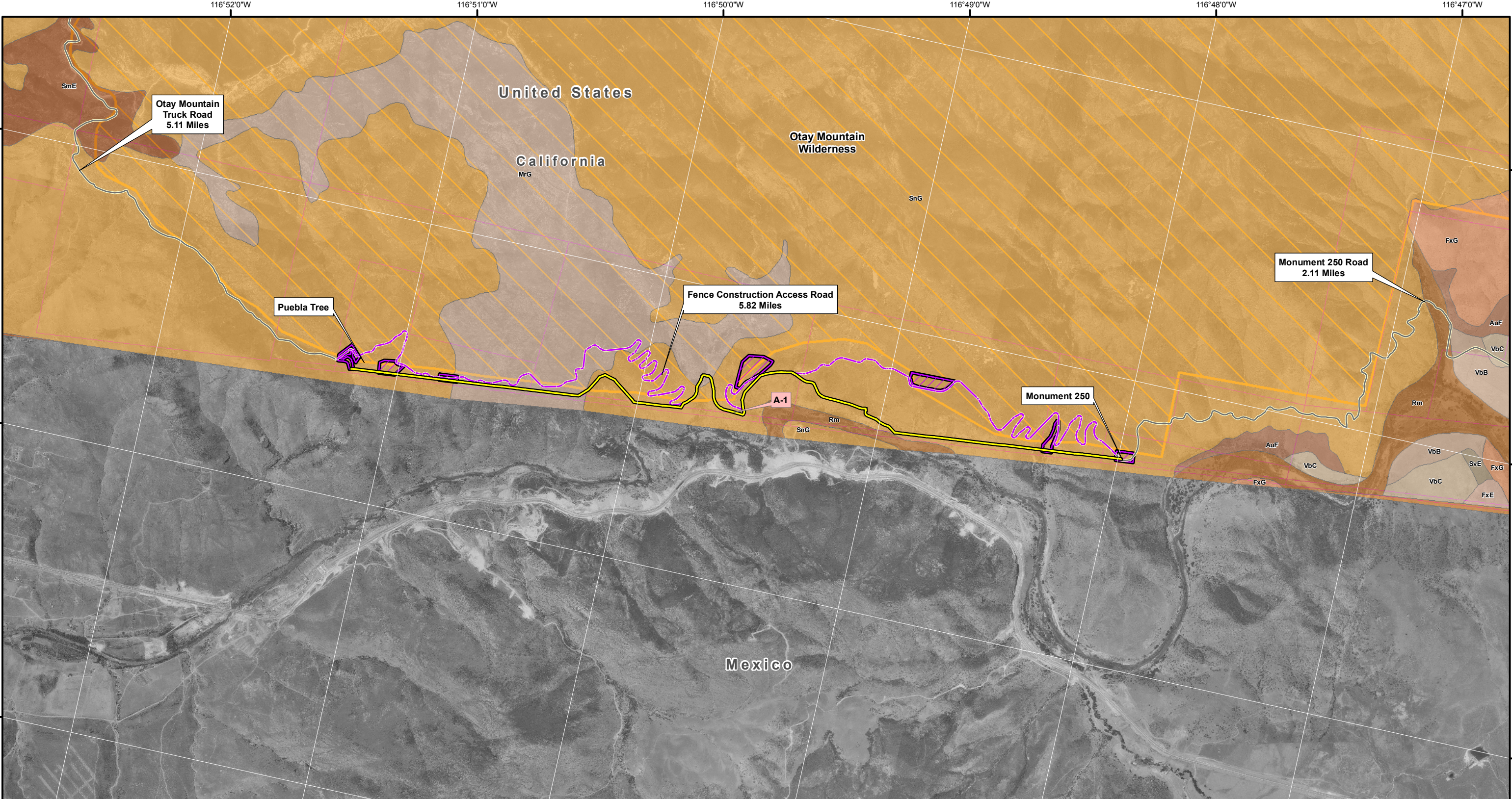




APPENDIX G

Detailed Maps of the Planned Tactical
Infrastructure Sections Showing Soils

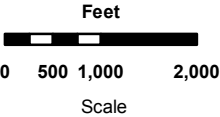




- Fence Sections
- Existing Access Roads
- Fence Construction Access Road
- Construction Staging Areas
- Land Parcels
- Otay Mountain Wilderness

Soil Types

- | | |
|---|---|
| AuF, Anderson very gravelly sandy loam, 9 to 45 percent | Rm, Riverwash |
| FxE, Friant rocky fine sandy loam, 9 to 30 percent slop | SmE, San Miguel rocky silt loam, 9 to 30 percent slopes |
| FxG, Friant rocky fine sandy loam, 30 to 70 percent slo | SnG, San Miguel-Exchequer rocky silt loams, 9 to 70 per |
| HrC, Huerhuero loam, 2 to 9 percent slopes | SvE, Stony land |
| MrG, Metamorphic rock land | VbB, Visalia gravelly sandy loam, 2 to 5 percent slopes |
| RkC, Reiff fine sandy loam, 5 to 9 percent slopes | VbC, Visalia gravelly sandy loam, 5 to 9 percent slopes |
| | s1001, Tujunga-Salinas-Elder (s1001) |
| | s1013, San Miguel-Friant-Exchequer (s1013) |



Environmental Stewardship Plan
for the Construction, Operation,
and Maintenance of
Tactical Infrastructure
U.S. Border Patrol
San Diego Sector, California
Detailed Fence Section Maps
Version 1

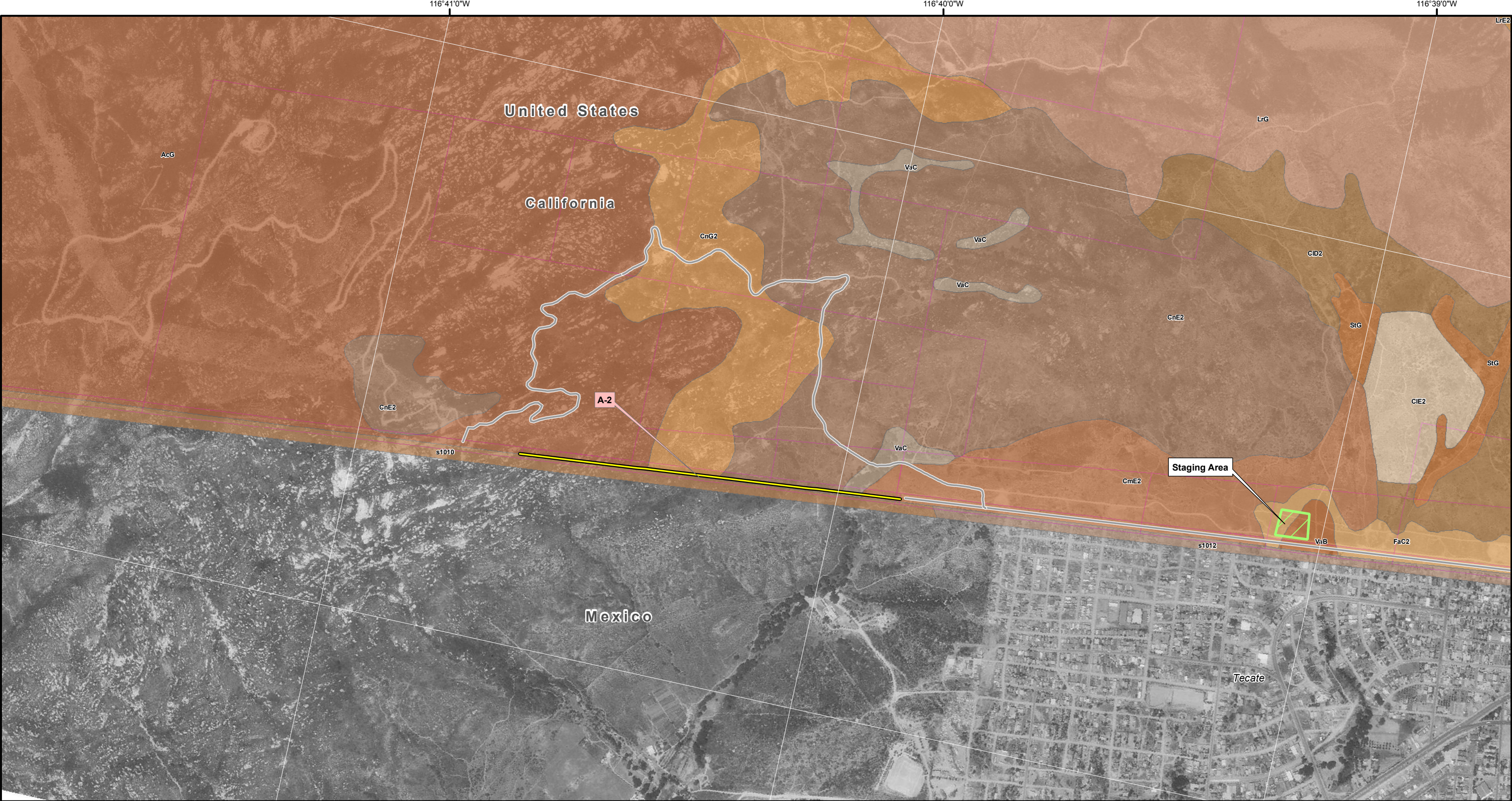
Projection: Albers
USA Contiguous Albers Equal Area Conic
North American Datum of 1983

June 19, 2008

Scale 1" = 2000'

Map 1 of 2

Source of Revised A-1 Alignment: Granite Construction Company, June 11, 2008



- Fence Section
- Existing Access Roads
- Staging Area
- Land Parcels

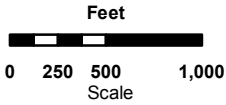
Soil Types

Label

- AcG, Acid igneous rock land
- CID2, Cieneba coarse sandy loam, 5 to 15 percent slopes,

- CIE2, Cieneba coarse sandy loam, 15 to 30 percent slopes
- CmE2, Cieneba rocky coarse sandy loam, 9 to 30 percent s
- CmrG, Cieneba very rocky coarse sandy loam, 30 to 75 per
- CnE2, Cieneba-Fallbrook rocky sandy loams, 9 to 30 perce
- CnG2, Cieneba-Fallbrook rocky sandy loams, 30 to 65 perc
- FaC2, Fallbrook sandy loam, 5 to 9 percent slopes, erode
- LrE2, Las Posas stony fine sandy loam, 9 to 30 percent s
- LrG, Las Posas stony fine sandy loam, 30 to 65 percent

- StG, Steep gullied land
- VaB, Visalia sandy loam, 2 to 5 percent slopes
- VaC, Visalia sandy loam, 5 to 9 percent slopes
- WmB, Wyman loam, 2 to 5 percent slopes
- WmC, Wyman loam, 5 to 9 percent slopes
- s1010, Sesame-Rock outcrop-Cieneba (s1010)
- s1012, Rock outcrop-Las Posas (s1012)



Environmental Stewardship Plan
for the Construction, Operation,
and Maintenance of
Tactical Infrastructure
U.S. Border Patrol
San Diego Sector, California

Projection: Albers
USA Contiguous Albers Equal Area Conic
North American Datum of 1983

August 7, 2008

Scale 1" = 1000'

Map 2 of 2