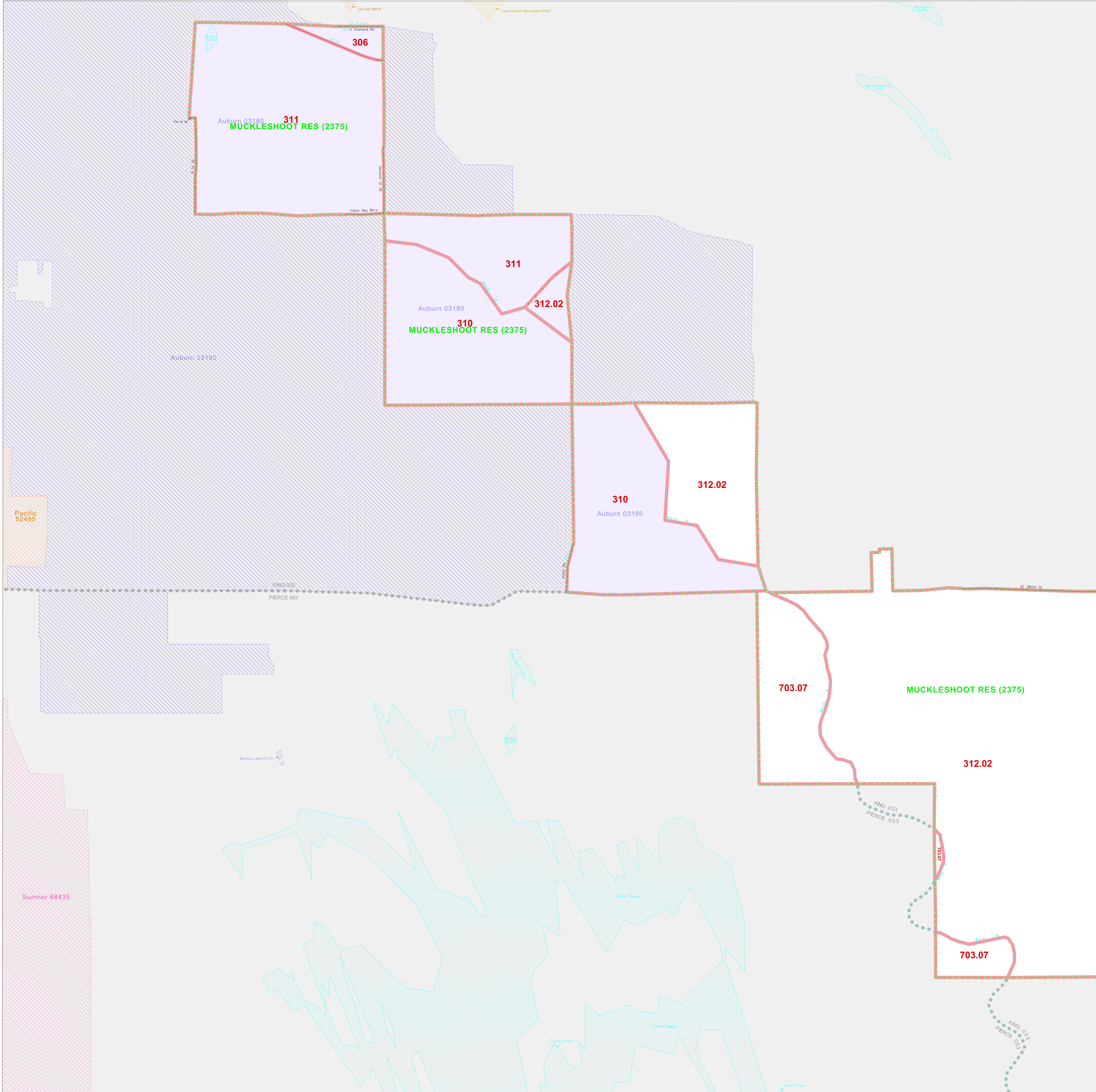


AMERICAN INDIAN TRIBAL CENSUS TRACT OUTLINE MAP (CENSUS 2000)

47 302968N  
122 228895W

47 302968N  
122 104997W



**LEGEND**

SYMBOL	NAME STYLE
*****	INTERNATIONAL
*****	AIR (FEDERAL)
*****	Trust Land
*****	OTSA / TDSA
*****	AMERICAN INDIAN TRIBAL SUBDIVISION
*****	AIR (State)
*****	SDA/ISA
//////	STATE (or statistically equivalent entity)
	COUNTY (or statistically equivalent entity)
-----	Place within Subject Entity
-----	Incorporated Place / GDP
-----	Place outside of Subject Entity
-----	Incorporated Place / GDP
-----	<b>Tribal Census Tract<sup>1</sup></b>

**ABBREVIATION REFERENCE:** AIR = American Indian Reservation; Trust Land = Off-Reservation Trust Land; OTSA = Oklahoma Tribal Statistical Area; TDSA = Tribal Designated Statistical Area; SDA/ISA = State Designated American Indian Statistical Area; GDP = Census Designated Place

**FEATURES**

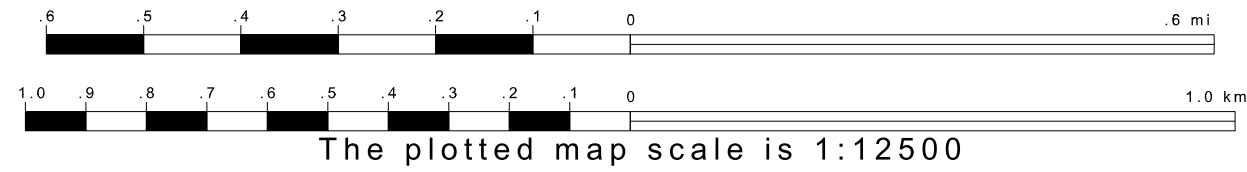
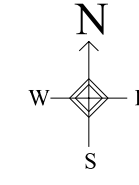
All Roads	Stream/Shoreline
Railroad	Inter-Tribal Stream
Pipe/Power Line	River/Lake
Physical Feature	Glacier
Nonviable Boundary	

Address  Inset  Out Area

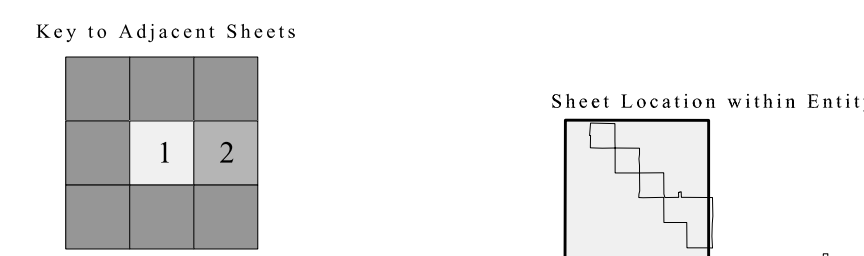
<sup>1</sup> This map shows tribal census tract boundaries and numbers. A tribal census tract is a type of census tract defined within a federally recognized American Indian reservation or off-reservation trust land for the purpose of providing data based on an American Indian hierarchy rather than by state and county.

47 218413N  
122 228895W

47 218413N  
122 104997W



ENTITY TYPE: American Indian Reservation  
NAME: Muckleshoot Reservation and Off-Reservation Trust Land (2375)  
ST: Washington



SHEET 1 OF 2 PARENT SHEETS  
TOTAL SHEETS: 3 (Index 1; Parent 2; Inset 0)

All legal boundaries and names are as of January 1, 2000. The boundaries shown on this map are for Census Bureau statistical data collection and tabulation purposes only; their depiction and designation for statistical purposes does not constitute a determination of jurisdictional authority or rights of ownership or entitlement. Source: U.S. Census Bureau's TIGER database (Census 2000) Projection: State-based Albers' Equal Area U.S. DEPARTMENT OF COMMERCE Economics and Statistics Administration U.S. Census Bureau

