



Accredited testing laboratory

DAR registration number: DAT-P-176/94-D1

Test report no. : 1-0345-06-02/08 Set-up documentation
Type identification : GI0401
Test specification : IEEE P1528/D1.2
FCC-ID : NCMOGI0401



Table of Contents

Annex 1 Photo documentation 3
Annex 1.1 Liquid depth 15

Annex 1 Photo documentation

Photo 1: Measurement System DASY 4

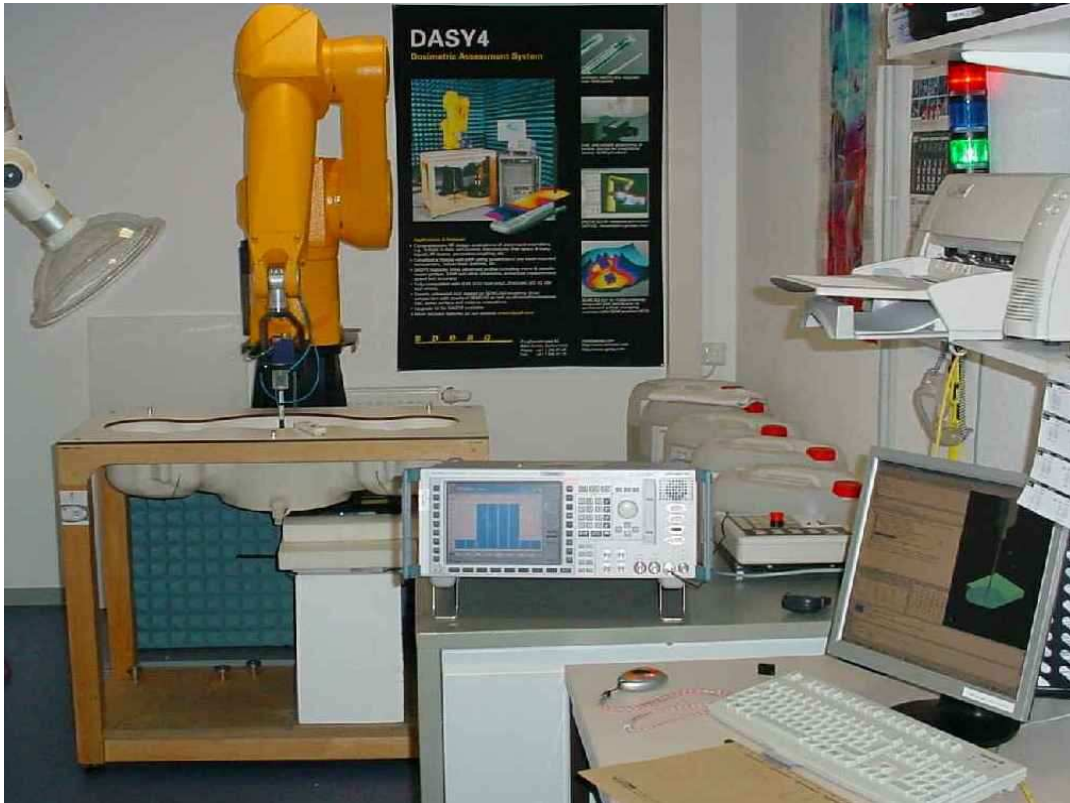


Photo 2: DUT - top view (close)

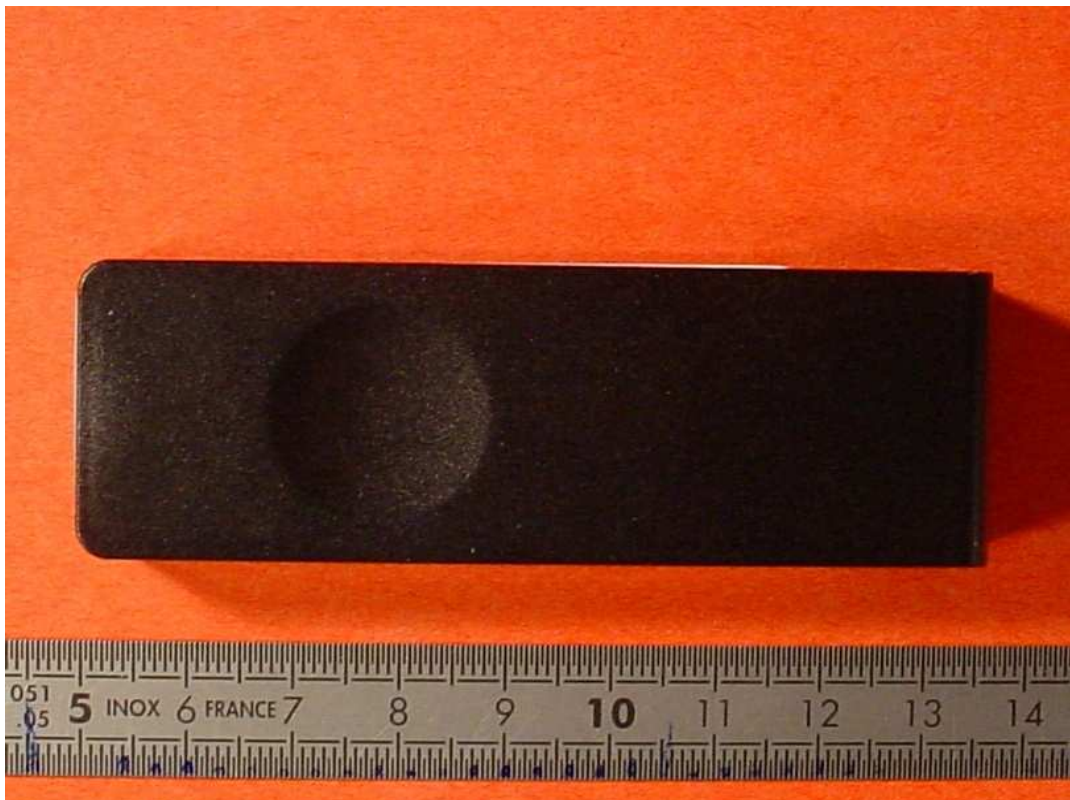


Photo 3: DUT - top view

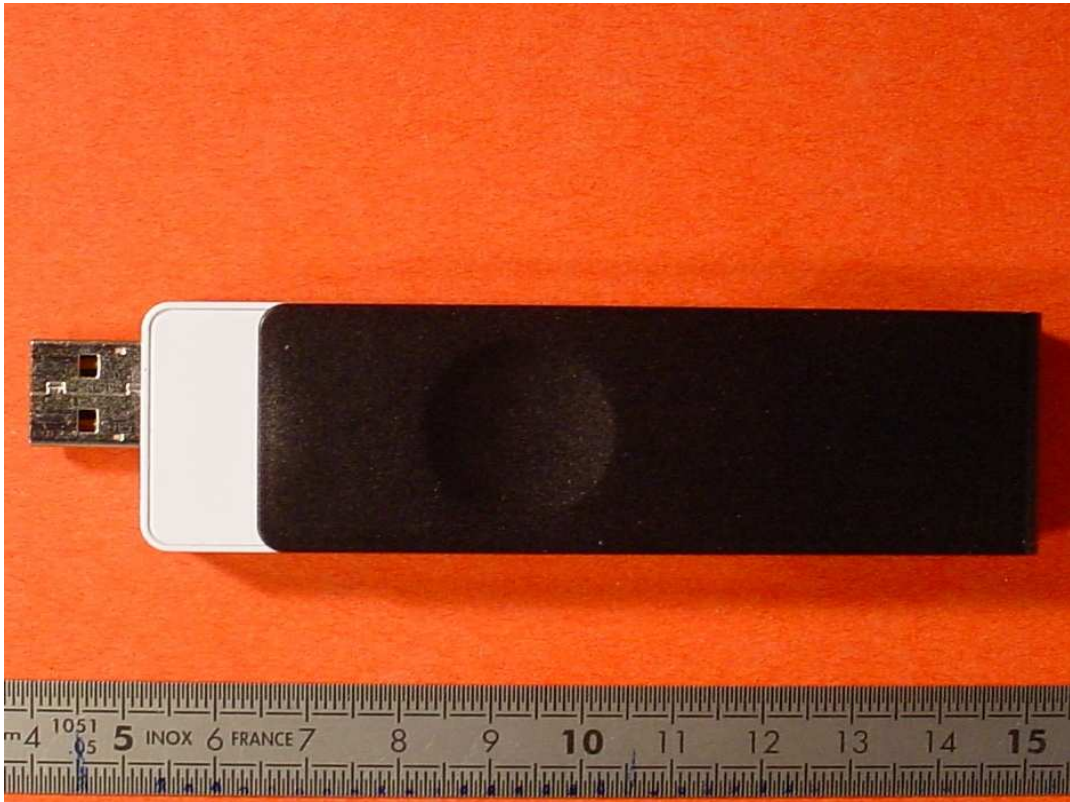


Photo 4: DUT - side view

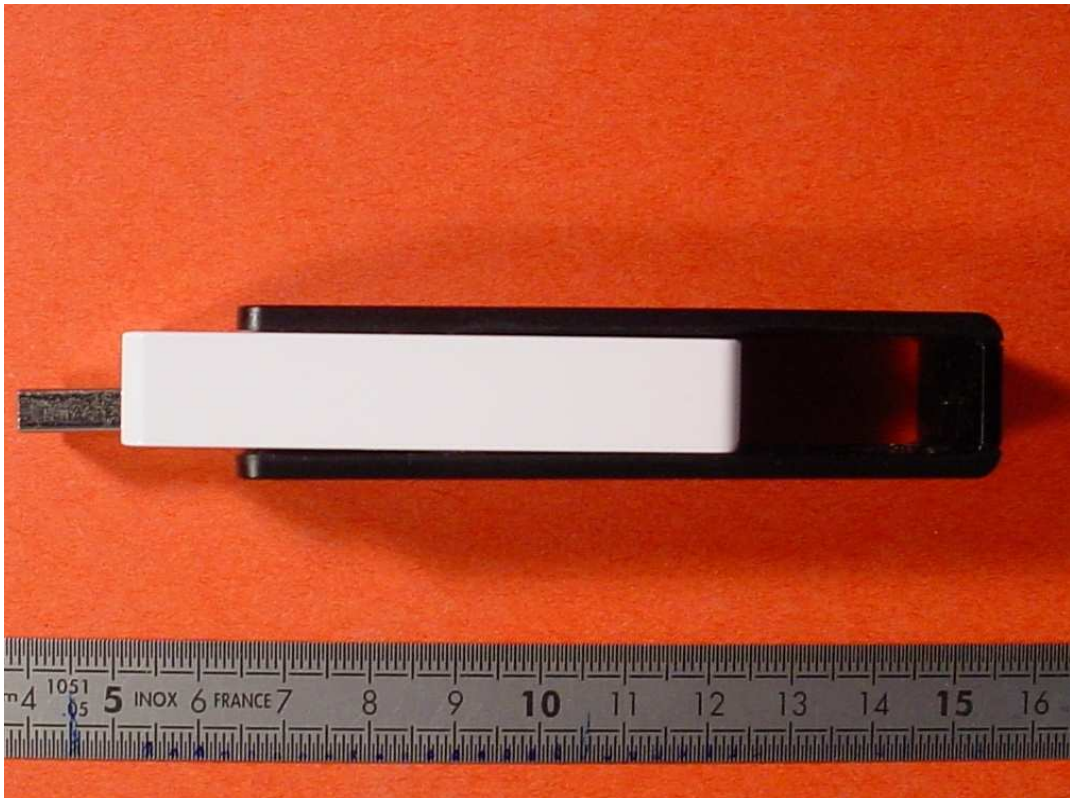


Photo 5: DUT - front view



Photo 6: DUT with IBM 2372



Photo 7: DUT with IBM 2372



Photo 8: DUT with IBM 2372



Photo 9: DUT with IBM 2372



Photo 10: DUT with IBM 2372 (label)



Photo 11: DUT with Fujitsu-Siemens AMILO Pro V3205



Photo 12: DUT with Fujitsu-Siemens AMILO Pro V3205



Photo 13: DUT with Fujitsu-Siemens AMILO Pro V3205



Photo 14: DUT with Fujitsu-Siemens AMILO Pro V3205 (label)



Photo 15: DUT with DELL PP01X



Photo 16: DUT with DELL PP01X



Photo 17: DUT with DELL PP01X



Photo 18: DUT with DELL PP01X (label)

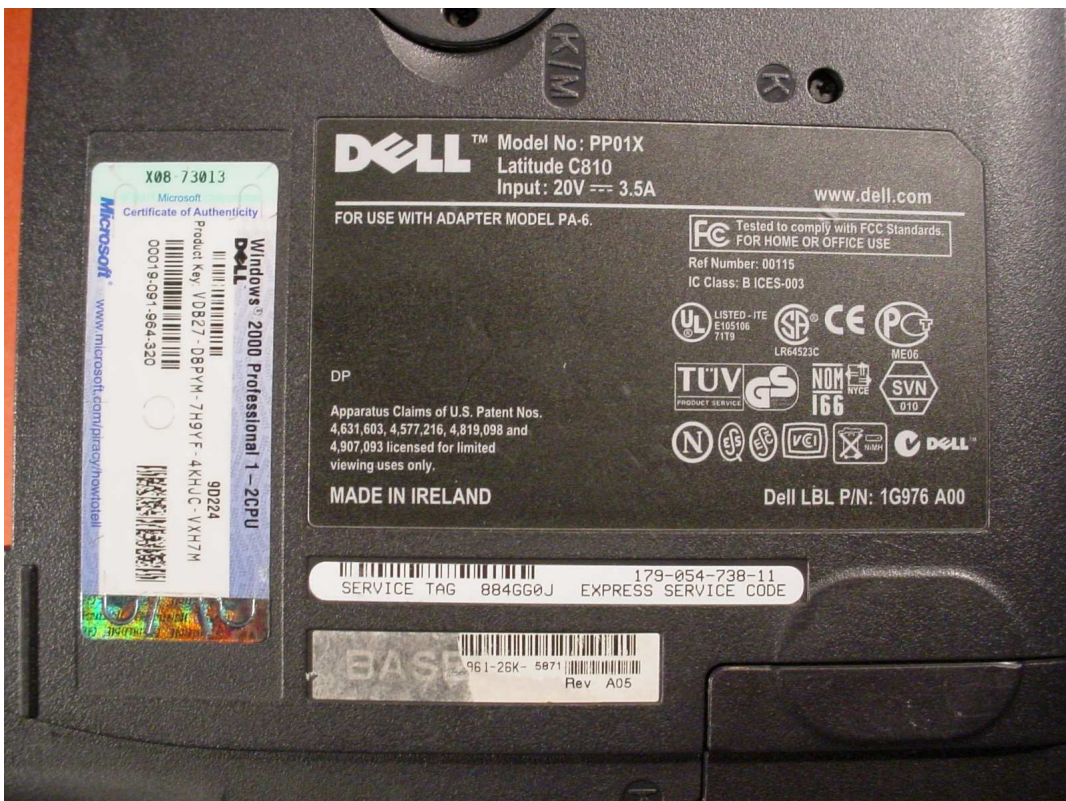


Photo 19: Test position underside with IBM 2372 (2 mm distance of DUT to SAM)



Photo 20: Test position underside with IBM 2372 (2 mm distance of DUT to SAM)



Photo 21: Test position underside with Fujitsu-Siemens (5 mm distance of DUT to SAM)



Photo 22: Test position underside with Fujitsu-Siemens (5 mm distance of DUT to SAM)



Photo 23: Test position underside with DELL PP01X (11 mm distance of DUT to SAM)



Photo 24: Test position underside with DELL PP01X (11 mm distance of DUT to SAM)



Annex 1.1 Liquid depth

Photo 25: Liquid depth 850 MHz body simulating liquid



Photo 26: Liquid depth 1900 MHz body simulating liquid

