

# ILS or LOC RWY 9

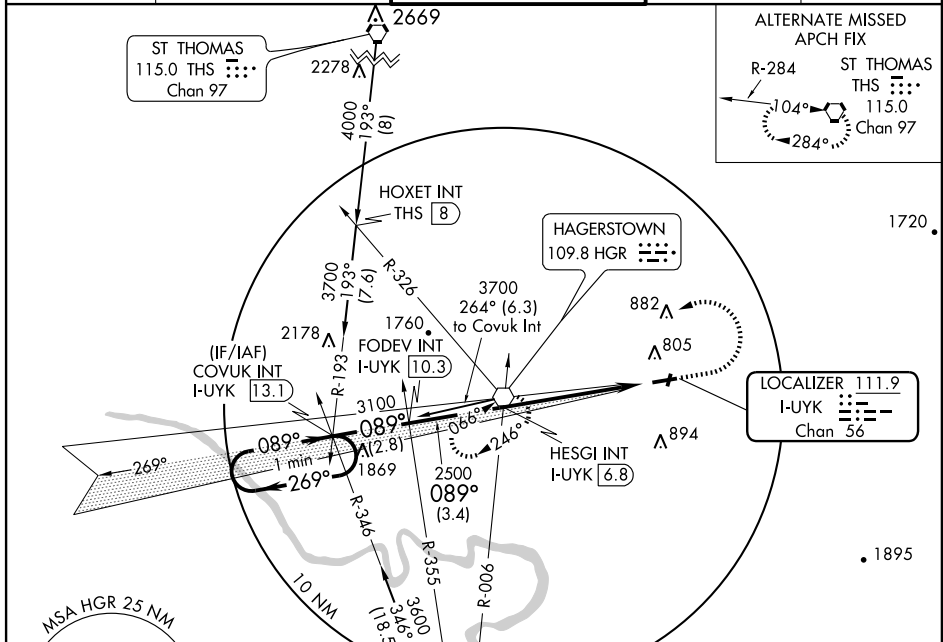
HAGERSTOWN RGNL-RICHARD A. HENSON FIELD (HGR)

LOC/DME I-UYK <b>111.9</b> Chan <b>56</b>	APP CRS <b>089°</b>	Rwy Idg <b>7000</b> TDZE <b>695</b> Apt Elev <b>703</b>
---	------------------------	---

**▼** If local altimeter setting not received, use Martinsburg altimeter setting and increase DA to 966, increase all MDAs 80 feet.

**MISSED APPROACH:** Climb to 1300 then climbing left turn to 3600 direct HGR VOR and hold, continue climb-in-hold to 3600.

ASOS <b>126.375</b>	WASHINGTON CENTER <b>134.15 385.4</b>	HAGERSTOWN TOWER ★ <b>120.3 (CTAF) 225.4</b>	GND CON <b>120.8</b>	UNICOM <b>122.95</b>
------------------------	--	---	-------------------------	-------------------------



NE-3, 12 FEB 2009 to 12 MAR 2009

NE-3, 12 FEB 2009 to 12 MAR 2009

One Minute Holding Pattern	COVUK INT I-UYK 13.1	FODEV INT I-UYK 10.3	1300	3600	HGR 109.8
CATEGORY	A	B	C	D	
S-ILS 9	895-3/4 200 (200-3/4)				
S-LOC 9	980-1 285 (300-1)				
CIRCLING	1140-1 437 (500-1)	1160-1 457 (500-1)	1160-1 1/2 457 (500-1 1/2)	1260-2 557 (600-2)	

# ILS or LOC RWY 9