

Cattle on Feed

Released February 20, 2009, by the National Agricultural Statistics Service (NASS), Agricultural Statistics Board, U.S. Department of Agriculture. For information on *Cattle on Feed* call Jason Hardegree at (202) 720-3040, office hours 7:30 a.m. to 4:00 p.m. ET.

U.S. Cattle on Feed Down 6 Percent

Cattle and calves on feed for slaughter market in the United States for feedlots with capacity of 1,000 or more head totaled 11.3 million head on February 1, 2009. The inventory was 6 percent below February 1, 2008.

Placements in feedlots during January totaled 1.86 million, 4 percent above 2008. Net placements were 1.79 million head. During January, placements of cattle and calves weighing less than 600 pounds were 380,000, 600-699 pounds were 505,000, 700-799 pounds were 553,000 and 800 pounds and greater were 420,000.

Marketings of fed cattle during January totaled 1.74 million, 6 percent below 2008. This is the lowest fed cattle marketings for the month of January since the series began in 1996.

Other disappearance totaled 67,000 during January, 12 percent above 2008.

2008 Cattle on Feed and Annual Size Group Estimates

Cattle and calves on feed for slaughter market in the United States for feedlots with capacity of 1,000 or more head represented 81.1 percent of all cattle and calves on feed in the United States on January 1, 2009, down from 81.6% on January 1, 2008.

Marketings of fed cattle for feedlots with capacity of 1,000 or more head during 2008 represented 84.7 percent of all cattle marketed from feedlots in the United States, up from 84.0 percent during 2007.

Special Note

This report contains the 2008 monthly cattle on feed estimates for feedlots with capacity of 1,000 or more head. Also included are the U.S. number of feedlots, inventory, and annual marketings by size group for 2007 and 2008. Revised estimates of number of feedlots, inventory and annual marketings by size group by State for 2007 are included in this report, but will no longer be published on an annual basis. State level numbers will only be published in conjunction with the Census of Agriculture every five years. Data for total U.S. capacity of 1,000 or more head feedlots are also published in this issue.

Contents

Page

Monthly U.S. Cattle on Feed Estimates

Number on Feed, Placements, Marketings and Other Disappearance	1
Number on Feed, 1,000+ Capacity Feedlots, by State	2
Number Placed on Feed, 1,000+ Capacity Feedlots, by State	3
Number Marketed and Other Disappearance, by State	4

Annual U.S. Cattle on Feed Estimates

Number on Feed, by Month and State.....	5
Number Placed on Feed, by Month and State	6
Number Placed on Feed by Weight Group, by Month and State	7
Number Marketed, by Month and State	11
Other Disappearance, by Month and State.....	12
Number on Feed by Class, by Quarter and State	13

U. S. Feedlots, 2007-2008

Feedlots, Inventory and Marketings by Size of Feedlot.....	14
Total Feedlot Capacity, 1,000+ Capacity Feedlots	14
Feedlots with Less Than 1,000 Head Capacity, by State	15
Feedlots with Greater Than 1,000 Head Capacity, by State	15
Feedlots, Inventory and Marketings by Size of Feedlot, by State.....	16
Feedlots, Inventory and Marketings by Size of Feedlot, by Region	17

Reliability Statement.....	18
----------------------------	----

Information Contacts.....	19
---------------------------	----

**Cattle on Feed: Number on Feed, Placements, Marketings, and
Other Disappearance, 1,000+ Capacity Feedlots,
United States, February 1, 2008-2009**

Item	Number		2009 as %
	2008	2009	of 2008
	<i>1,000 Head</i>	<i>1,000 Head</i>	<i>Percent</i>
On Feed Jan 1	*12,092	11,234	93
Placed on Feed During Jan	1,787	1,858	104
Fed Cattle Marketed During Jan	*1,853	1,737	94
Other Disappearance During Jan	60	67	112
On Feed Feb 1	11,966	11,288	94

* Revised.

**Cattle on Feed: Number on Feed, Placements, Marketings, and
Other Disappearance, 1,000+ Capacity Feedlots,
United States, January 1, 2008-2009**

Item	Number		2009 as %
	2008	2009	of 2008
	<i>1,000 Head</i>	<i>1,000 Head</i>	<i>Percent</i>
On Feed Dec 1 ¹	12,099	11,346	94
Placed on Feed During Dec ¹	1,701	1,647	97
Fed Cattle Marketed During Dec ¹	*1,650	1,683	102
Other Disappearance During Dec ¹	58	76	131
On Feed Jan 1	*12,092	11,234	93

* Revised.

¹ December preceding year.

**Cattle on Feed: Number on Feed by Class, 1,000+ Capacity Feedlots,
United States, January 1, 2008-2009**

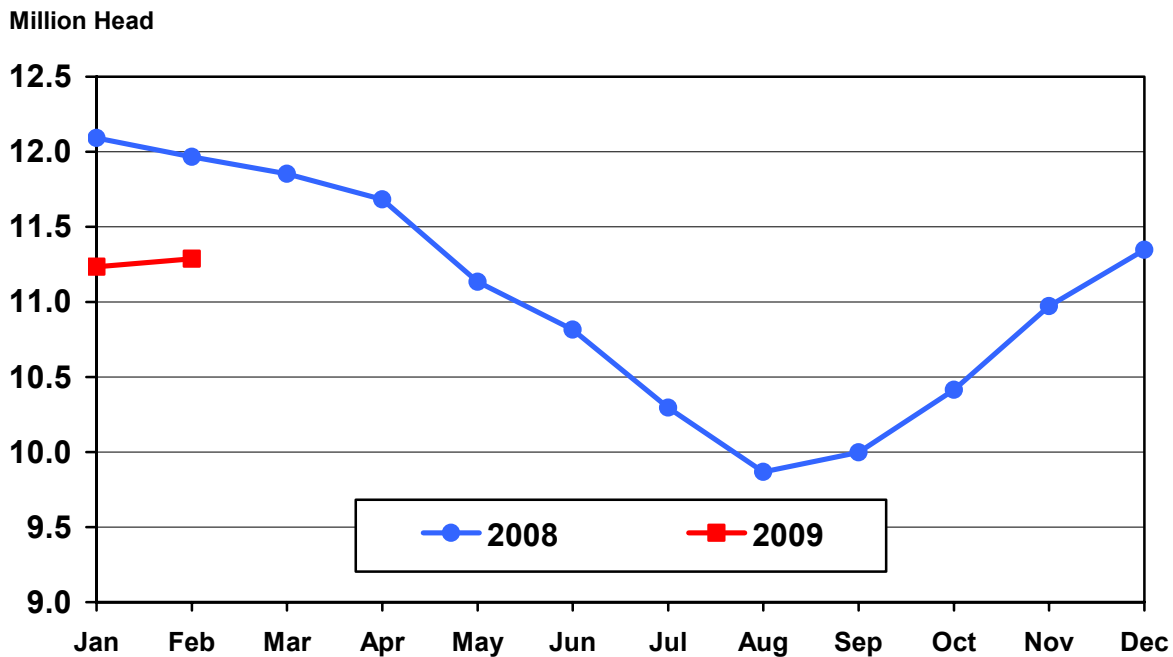
Item	Number		2009 as %
	2008	2009	of 2008
	<i>1,000 Head</i>	<i>1,000 Head</i>	<i>Percent</i>
Class on Feed Jan 1			
Steers and Steer Calves	*7,643	7,071	93
Heifers and Heifer Calves	*4,379	4,100	94
Cows and Bulls	70	63	90

*Revised.

**Cattle on Feed: Number on Feed, 1,000+ Capacity Feedlots,
by Month, State, and United States 2008-2009**

State	Feb 1, 2008	Jan 1, 2009	Feb 1, 2009		
			Number	as % of 2008	as % of Jan
	<i>1,000 Head</i>	<i>1,000 Head</i>	<i>1,000 Head</i>	<i>Percent</i>	<i>Percent</i>
AZ	373	358	349	94	97
CA	555	490	480	86	98
CO	1,090	1,000	1,020	94	102
ID	235	220	215	91	98
IA	570	500	520	91	104
KS	2,430	2,270	2,260	93	100
NE	2,510	2,370	2,400	96	101
NM	160	164	158	99	96
OK	355	335	330	93	99
SD	230	220	225	98	102
TX	2,930	2,790	2,810	96	101
WA	153	157	151	99	96
Oth Sts	375	360	370	99	103
US	11,966	11,234	11,288	94	100

United States Cattle on Feed 1,000+ Capacity Feedlots



**Cattle on Feed: Number Placed on Feed, 1,000+ Capacity Feedlots,
by Month, State, and United States 2008-2009**

State	During Jan 2008	During Dec 2008	During Jan 2009		
			Number	as % of 2008	as % of Dec
	<i>1,000 Head</i>	<i>1,000 Head</i>	<i>1,000 Head</i>	<i>Percent</i>	<i>Percent</i>
AZ	35	29	27	77	93
CA	76	59	51	67	86
CO	180	150	200	111	133
ID	43	36	37	86	103
IA	72	66	81	113	123
KS	405	380	435	107	114
NE	380	345	400	105	116
NM	16	16	9	56	56
OK	54	49	54	100	110
SD	45	38	43	96	113
TX	400	405	440	110	109
WA	27	28	30	111	107
Oth Sts	54	46	51	94	111
US	1,787	1,647	1,858	104	113

**Cattle on Feed: Number Placed on Feed by Weight Group, 1,000+ Capacity
Feedlots, by Month, State, and United States, 2007-2009**

State	During January									
	Under 600		600-699		700-799		800 Plus		Total	
	2008	2009	2008	2009	2008	2009	2008	2009	2008	2009
	<i>1,000 Head</i>	<i>1,000 Head</i>	<i>1,000 Head</i>	<i>1,000 Head</i>	<i>1,000 Head</i>	<i>1,000 Head</i>	<i>1,000 Head</i>	<i>1,000 Head</i>	<i>1,000 Head</i>	<i>1,000 Head</i>
CO	20	20	45	55	55	55	60	70	180	200
KS	55	60	120	130	140	160	90	85	405	435
NE	50	65	90	95	125	130	115	110	380	400
TX	135	105	125	135	110	135	30	65	400	440
Oth Sts	140	130	87	90	95	73	100	90	422	383
US	400	380	467	505	525	553	395	420	1,787	1,858
	During December									
	Under 600		600-699		700-799		800 Plus		Total	
	2007	2008	2007	2008	2007	2008	2007	2008	2007	2008
	<i>1,000 Head</i>	<i>1,000 Head</i>	<i>1,000 Head</i>	<i>1,000 Head</i>	<i>1,000 Head</i>	<i>1,000 Head</i>	<i>1,000 Head</i>	<i>1,000 Head</i>	<i>1,000 Head</i>	<i>1,000 Head</i>
CO	30	25	55	45	50	40	35	40	170	150
KS	80	70	120	120	120	120	65	70	385	380
NE	65	55	100	100	100	100	90	90	355	345
TX	145	140	125	135	80	90	30	40	380	405
Oth Sts	160	135	105	90	70	57	76	85	411	367
US	480	425	505	490	420	407	296	325	1,701	1,647

**Cattle on Feed: Number Marketed, 1,000+ Capacity Feedlots,
by Month, State, and United States 2008-2009**

State	During Jan 2008	During Dec 2008	During Jan 2009		
			Number	as % of 2008	as % of Dec
	<i>1,000 Head</i>	<i>1,000 Head</i>	<i>1,000 Head</i>	<i>Percent</i>	<i>Percent</i>
AZ	29	29	35	121	121
CA	72	60	59	82	98
CO	185	155	170	92	110
ID	42	39	41	98	105
IA	69	64	59	86	92
KS	445	405	430	97	106
NE	390	340	360	92	106
NM	15	18	13	87	72
OK	47	46	57	121	124
SD	43	37	35	81	95
TX	420	405	405	96	100
WA	*31	38	35	113	92
Oth Sts	65	47	38	58	81
US	*1,853	1,683	1,737	94	103

*Revised.

**Cattle on Feed: Other Disappearance, 1,000+ Capacity Feedlots,
by Month, State, and United States 2008-2009**

State	During Jan 2008	During Dec 2008	During Jan 2009		
			Number	as % of 2008	as % of Dec
	<i>1,000 Head</i>	<i>1,000 Head</i>	<i>1,000 Head</i>	<i>Percent</i>	<i>Percent</i>
AZ	1	1	1	100	100
CA	9	4	2	22	50
CO	5	5	10	200	200
ID	1	2	1	100	50
IA	3	2	2	67	100
KS	10	15	15	150	100
NE	10	15	10	100	67
NM	1	2	2	200	100
OK	2	3	2	100	67
SD	2	1	3	150	300
TX	10	20	15	150	75
WA	2	2	1	50	50
Oth Sts	4	4	3	75	75
US	60	76	67	112	88

**Cattle on Feed: Number on Feed, 1,000+ Capacity Feedlots,
by Month, State, and United States, 2008**

State	Jan 1	Feb 1	Mar 1	Apr 1	May 1	Jun 1
	<i>1,000 Head</i>	<i>1,000 Head</i>	<i>1,000 Head</i>	<i>1,000 Head</i>	<i>1,000 Head</i>	<i>1,000 Head</i>
AZ	368	373	377	374	370	365
CA	560	555	545	530	520	525
CO	1,100	1,090	1,050	1,020	950	920
ID	235	235	235	230	225	215
IA	570	570	560	550	530	520
KS	2,480	2,430	2,410	2,420	2,290	2,190
NE	2,530	2,510	2,490	2,450	2,380	2,250
NM	160	160	160	158	150	150
OK	350	355	350	340	305	305
SD	230	230	235	225	220	205
TX	2,960	2,930	2,920	2,880	2,690	2,690
WA	*159	153	151	152	155	145
Oth Sts	390	375	370	355	350	335
US	*12,092	11,966	11,853	11,684	11,135	10,815
	Jul 1	Aug 1	Sep 1	Oct 1	Nov 1	Dec 1
	<i>1,000 Head</i>	<i>1,000 Head</i>	<i>1,000 Head</i>	<i>1,000 Head</i>	<i>1,000 Head</i>	<i>1,000 Head</i>
AZ	356	357	362	360	362	359
CA	520	515	505	505	500	495
CO	820	750	770	870	960	1,010
ID	200	180	180	195	210	225
IA	500	475	470	475	485	500
KS	2,080	2,010	2,090	2,160	2,230	2,310
NE	2,050	1,920	1,960	2,110	2,310	2,380
NM	154	164	167	173	172	168
OK	300	290	305	315	320	335
SD	185	170	165	175	200	220
TX	2,660	2,590	2,580	2,590	2,710	2,810
WA	140	133	138	157	163	169
Oth Sts	330	315	305	330	350	365
US	10,295	9,869	9,997	10,415	10,972	11,346

*Revised.

**Cattle on Feed: Number Placed on Feed, 1,000+ Capacity Feedlots,
by Month, State, and United States, 2008**

State	During					
	Dec ¹	Jan	Feb	Mar	Apr	May
	<i>1,000 Head</i>	<i>1,000 Head</i>	<i>1,000 Head</i>	<i>1,000 Head</i>	<i>1,000 Head</i>	<i>1,000 Head</i>
AZ	26	35	36	30	34	34
CA	67	76	60	55	64	80
CO	170	180	155	135	115	150
ID	39	43	39	37	28	28
IA	71	72	62	59	59	58
KS	385	405	390	440	360	410
NE	355	380	350	360	340	370
NM	26	16	15	10	9	24
OK	44	54	45	50	40	76
SD	50	45	47	32	33	34
TX	380	400	440	450	360	560
WA	25	27	30	30	33	29
Oth Sts	63	54	54	48	61	47
US	1,701	1,787	1,723	1,736	1,536	1,900
	During					
	Jun	Jul	Aug	Sep	Oct	Nov
	<i>1,000 Head</i>	<i>1,000 Head</i>	<i>1,000 Head</i>	<i>1,000 Head</i>	<i>1,000 Head</i>	<i>1,000 Head</i>
AZ	32	37	33	24	31	26
CA	52	45	37	55	54	48
CO	85	110	190	255	245	185
ID	33	29	45	57	55	65
IA	41	51	72	81	104	92
KS	330	*430	520	485	450	405
NE	290	320	445	550	590	440
NM	32	32	27	27	17	21
OK	57	46	70	60	75	69
SD	21	21	28	56	70	57
TX	460	460	510	510	630	510
WA	28	32	36	44	38	36
Oth Sts	57	43	48	77	79	62
US	1,518	*1,656	2,061	2,281	2,438	2,016

* Revised.

¹ December prior year.

**Cattle on Feed: Number Placed on Feed by Weight Group, 1,000+ Capacity
Feedlots, by Month, State, and United States, 2008**

State	During December Prior Year				
	Under 600	600-699	700-799	800 Plus	Total
	<i>1,000 Head</i>	<i>1,000 Head</i>	<i>1,000 Head</i>	<i>1,000 Head</i>	<i>1,000 Head</i>
CO	30	55	50	35	170
KS	80	120	120	65	385
NE	65	100	100	90	355
TX	145	125	80	30	380
Oth Sts	160	105	70	76	411
US	480	505	420	296	1,701
	During January				
	Under 600	600-699	700-799	800 Plus	Total
	<i>1,000 Head</i>	<i>1,000 Head</i>	<i>1,000 Head</i>	<i>1,000 Head</i>	<i>1,000 Head</i>
CO	20	45	55	60	180
KS	55	120	140	90	405
NE	50	90	125	115	380
TX	135	125	110	30	400
Oth Sts	140	87	95	100	422
US	400	467	525	395	1,787
	During February				
	Under 600	600-699	700-799	800 Plus	Total
	<i>1,000 Head</i>	<i>1,000 Head</i>	<i>1,000 Head</i>	<i>1,000 Head</i>	<i>1,000 Head</i>
CO	10	35	50	60	155
KS	40	85	160	105	390
NE	40	70	110	130	350
TX	120	125	125	70	440
Oth Sts	120	70	88	110	388
US	330	385	533	475	1,723

--continued

**Cattle on Feed: Number Placed on Feed by Weight Group, 1,000+ Capacity
Feedlots, by Month, State, and United States, 2008 (continued)**

State	During March				
	Under 600	600-699	700-799	800 Plus	Total
	<i>1,000 Head</i>	<i>1,000 Head</i>	<i>1,000 Head</i>	<i>1,000 Head</i>	<i>1,000 Head</i>
CO	20	25	45	45	135
KS	55	95	150	140	440
NE	50	50	110	150	360
TX	100	105	165	80	450
Oth Sts	110	55	91	95	351
US	335	330	561	510	1,736
	During April				
	Under 600	600-699	700-799	800 Plus	Total
	<i>1,000 Head</i>	<i>1,000 Head</i>	<i>1,000 Head</i>	<i>1,000 Head</i>	<i>1,000 Head</i>
CO	15	25	35	40	115
KS	45	70	115	130	360
NE	50	60	90	140	340
TX	90	80	110	80	360
Oth Sts	115	43	78	125	361
US	315	278	428	515	1,536
	During May				
	Under 600	600-699	700-799	800 Plus	Total
	<i>1,000 Head</i>	<i>1,000 Head</i>	<i>1,000 Head</i>	<i>1,000 Head</i>	<i>1,000 Head</i>
CO	25	30	45	50	150
KS	50	70	130	160	410
NE	40	70	85	175	370
TX	105	125	210	120	560
Oth Sts	120	55	95	140	410
US	340	350	565	645	1,900

--continued

**Cattle on Feed: Number Placed on Feed by Weight Group, 1,000+ Capacity
Feedlots, by Month, State, and United States, 2008 (continued)**

State	During June				
	Under 600	600-699	700-799	800 Plus	Total
	<i>1,000 Head</i>	<i>1,000 Head</i>	<i>1,000 Head</i>	<i>1,000 Head</i>	<i>1,000 Head</i>
CO	20	10	25	30	85
KS	60	75	100	95	330
NE	40	40	70	140	290
TX	135	140	120	65	460
Oth Sts	110	60	68	115	353
US	365	325	383	445	1,518
	During July				
	Under 600	600-699	700-799	800 Plus	Total
	<i>1,000 Head</i>	<i>1,000 Head</i>	<i>1,000 Head</i>	<i>1,000 Head</i>	<i>1,000 Head</i>
CO	15	20	35	40	110
KS	70	*85	155	*120	*430
NE	40	50	90	140	320
TX	130	110	130	90	460
Oth Sts	105	50	71	110	336
US	360	*315	481	*500	*1,656
	During August				
	Under 600	600-699	700-799	800 Plus	Total
	<i>1,000 Head</i>	<i>1,000 Head</i>	<i>1,000 Head</i>	<i>1,000 Head</i>	<i>1,000 Head</i>
CO	15	20	50	105	190
KS	65	105	190	160	520
NE	60	60	105	220	445
TX	125	170	140	75	510
Oth Sts	100	55	81	160	396
US	365	410	566	720	2,061

See footnote(s) at end of table.

--continued

**Cattle on Feed: Number Placed on Feed by Weight Group, 1,000+ Capacity
Feedlots, by Month, State, and United States, 2008 (continued)**

State	During September				
	Under 600	600-699	700-799	800 Plus	Total
	<i>1,000 Head</i>	<i>1,000 Head</i>	<i>1,000 Head</i>	<i>1,000 Head</i>	<i>1,000 Head</i>
CO	20	30	45	160	255
KS	80	100	155	150	485
NE	80	70	120	280	550
TX	145	150	130	85	510
Oth Sts	120	65	91	205	481
US	445	415	541	880	2,281
	During October				
	Under 600	600-699	700-799	800 Plus	Total
	<i>1,000 Head</i>	<i>1,000 Head</i>	<i>1,000 Head</i>	<i>1,000 Head</i>	<i>1,000 Head</i>
CO	50	70	45	80	245
KS	100	120	125	105	450
NE	160	160	100	170	590
TX	195	160	190	85	630
Oth Sts	195	105	83	140	523
US	700	615	543	580	2,438
	During November				
	Under 600	600-699	700-799	800 Plus	Total
	<i>1,000 Head</i>	<i>1,000 Head</i>	<i>1,000 Head</i>	<i>1,000 Head</i>	<i>1,000 Head</i>
CO	50	55	40	40	185
KS	85	125	120	75	405
NE	110	160	80	90	440
TX	145	180	130	55	510
Oth Sts	175	110	81	110	476
US	565	630	451	370	2,016

* Revised.

**Cattle on Feed: Number Marketed, 1,000+ Capacity Feedlots,
by Month, State, and United States, 2008**

State	During					
	Dec ¹	Jan	Feb	Mar	Apr	May
	<i>1,000 Head</i>	<i>1,000 Head</i>	<i>1,000 Head</i>	<i>1,000 Head</i>	<i>1,000 Head</i>	<i>1,000 Head</i>
AZ	24	29	30	31	37	38
CA	60	72	63	65	70	71
CO	135	185	190	160	165	170
ID	42	42	38	39	32	36
IA	69	69	69	68	77	65
KS	390	445	400	415	470	490
NE	335	390	360	390	400	480
NM	13	15	14	11	16	23
OK	37	47	48	58	74	75
SD	33	43	40	37	37	46
TX	420	420	440	480	540	550
WA	*33	*31	30	28	29	38
Oth Sts	59	65	54	60	63	58
US	*1,650	*1,853	1,776	1,842	2,010	2,140
	During					
	Jun	Jul	Aug	Sep	Oct	Nov
	<i>1,000 Head</i>	<i>1,000 Head</i>	<i>1,000 Head</i>	<i>1,000 Head</i>	<i>1,000 Head</i>	<i>1,000 Head</i>
AZ	40	35	27	25	28	28
CA	55	48	45	53	57	50
CO	175	175	165	150	150	130
ID	47	48	44	41	39	49
IA	60	75	75	75	93	75
KS	430	*490	430	400	360	310
NE	475	440	395	390	375	355
NM	27	21	23	20	17	23
OK	61	55	54	49	68	52
SD	38	35	32	44	43	35
TX	480	520	510	490	495	395
WA	32	38	30	24	31	29
Oth Sts	58	57	54	51	58	44
US	1,978	*2,037	1,884	1,812	1,814	1,575

* Revised.

¹ December prior year.

**Cattle on Feed: Other Disappearance, 1,000+ Capacity Feedlots,
by Month, State, and United States, 2008**

State	During					
	Dec ¹	Jan	Feb	Mar	Apr	May
	<i>1,000 Head</i>	<i>1,000 Head</i>	<i>1,000 Head</i>	<i>1,000 Head</i>	<i>1,000 Head</i>	<i>1,000 Head</i>
AZ	1	1	2	2	1	1
CA	2	9	7	5	4	4
CO	5	5	5	5	20	10
ID	2	1	1	3	1	2
IA	2	3	3	1	2	3
KS	15	10	10	15	20	20
NE	10	10	10	10	10	20
NM	2	1	1	1	1	1
OK	2	2	2	2	1	1
SD	2	2	2	5	1	3
TX	10	10	10	10	10	10
WA	1	2	2	1	1	1
Oth Sts	4	4	5	3	3	4
US	58	60	60	63	75	80
	During					
	Jun	Jul	Aug	Sep	Oct	Nov
	<i>1,000 Head</i>	<i>1,000 Head</i>	<i>1,000 Head</i>	<i>1,000 Head</i>	<i>1,000 Head</i>	<i>1,000 Head</i>
AZ	1	1	1	1	1	1
CA	2	2	2	2	2	3
CO	10	5	5	5	5	5
ID	1	1	1	1	1	1
IA	1	1	2	1	1	2
KS	10	10	10	15	20	15
NE	15	10	10	10	15	15
NM	1	1	1	1	1	2
OK	1	1	1	1	2	2
SD	3	1	1	2	2	2
TX	10	10	10	10	15	15
WA	1	1	1	1	1	1
Oth Sts	4	1	4	1	1	3
US	60	45	49	51	67	67

¹ December prior year.

**Cattle on Feed: Number on Feed by Class, 1,000+ Capacity Feedlots,
by Quarter, State, and United States, 2008**

State	Steers & Steer Calves				Heifers & Heifer Calves			
	Jan 1	Apr 1	Jul 1	Oct 1	Jan 1	Apr 1	Jul 1	Oct 1
	<i>1,000 Head</i>	<i>1,000 Head</i>	<i>1,000 Head</i>	<i>1,000 Head</i>	<i>1,000 Head</i>	<i>1,000 Head</i>	<i>1,000 Head</i>	<i>1,000 Head</i>
AZ	365	371	354	359	3	3	2	1
CA	500	485	470	455	60	45	50	50
CO	670	600	485	515	425	415	330	350
ID	127	132	112	101	98	96	86	89
IA	390	380	335	345	179	170	165	130
KS	1,350	1,270	1,135	1,225	1,120	1,130	940	920
NE	1,550	1,550	1,270	1,200	970	890	775	900
NM	90	94	78	77	70	64	76	96
OK	240	220	190	225	110	120	110	90
SD	111	121	93	82	90	86	75	78
TX	1,880	1,790	1,600	1,590	1,077	1,087	1,059	998
WA	*85	74	65	84	*73	77	74	72
Oth Sts	285	260	245	255	104	93	81	74
US	*7,643	7,347	6,432	6,513	*4,379	4,276	3,823	3,848
Cows and Bulls								
	Jan 1	Apr 1	Jul 1	Oct 1				
	<i>1,000 Head</i>	<i>1,000 Head</i>	<i>1,000 Head</i>	<i>1,000 Head</i>				
AZ	0	0	0	0				
CA	0	0	0	0				
CO	5	5	5	5				
ID	10	2	2	5				
IA	1	0	0	0				
KS	10	20	5	15				
NE	10	10	5	10				
NM	0	0	0	0				
OK	0	0	0	0				
SD	29	18	17	15				
TX	3	3	1	2				
WA	1	1	1	1				
Oth Sts	1	2	4	1				
US	70	61	40	54				

*Revised.

**Cattle on Feed: Number of Feedlots, Inventory, and Marketings,
by Size of Feedlot, United States 2007-2008**

Feedlot Capacity	2007			2008		
	Lots	Inventory	Cattle Marketed	Lots	Inventory	Cattle Marketed
	<i>Number</i>	<i>1,000 Head</i>	<i>1,000 Head</i>	<i>Number</i>	<i>1,000 Head</i>	<i>1,000 Head</i>
Less than 1,000 head	85,000	*2,734.7	*4,285	80,000	2,616.7	4,045
1,000 head or more	2,160	*12,092	*22,461	2,170	11,234	22,404
1,000 - 1,999	809	457	780	810	414	779
2,000 - 3,999	564	816	1,395	570	780	1,390
4,000 - 7,999	343	1,140	1,974	350	1,070	1,970
8,000 - 15,999	182	1,372	2,535	180	1,250	2,535
16,000 - 23,999	78	1,151	2,166	80	1,120	2,260
24,000 - 31, 999	55	1,188	2,329	52	1,070	2,140
32,000 - 49,999	71	2,390	4,376	70	2,220	4,380
50,000 and Over	58	*3,578	*6,906	58	3,310	6,950
All Feedlots	87,160	*14,826.7	*26,746	82,170	13,850.7	26,449

*Revised.

**Cattle on Feed: Total Feedlot Capacity, 1000+ Capacity Feedlots,
United States, January 1, 2008-2009**

Item	Feedlot Capacity in Number of Head	
	2008	2009
	<i>1,000 Head</i>	<i>1,000 Head</i>
US	16,800	16,700

**Cattle on Feed: Number of Feedlots, Inventory, and Marketings,
Feedlots With Less Than 1,000 Head Capacity,
by State, and United States 2007¹**

State	Lots	Inventory	Cattle Marketed
	<i>Number</i>	<i>1,000 Head</i>	<i>1,000 Head</i>
IL	4,800	109	200
IN	5,400	101	160
IA	7,500	*780	*1,025
MI	3,200	122	190
MN	5,300	*221	310
MO	2,500	55	80
NE	3,800	170	300
ND	1,000	28	60
OH	6,400	166	290
PA	4,600	68	120
SD	3,000	170	290
WI	8,500	241	380
Oth Sts	29,000	*503.7	880
US	85,000	*2,734.7	*4,285

* Revised.

¹ Inventory is the number on hand January 1 of the following year.

**Cattle on Feed: Number of Feedlots, Inventory, and Marketings,
Feedlots with 1,000 Head or Greater Capacity,
by State, and United States 2007¹**

State	Lots	Inventory	Cattle Marketed
	<i>Number</i>	<i>1,000 Head</i>	<i>1,000 Head</i>
AZ	6	368	353
CA	21	560	734
CO	132	1,100	1,940
ID	39	235	524
IA	345	570	835
KS	200	2,480	5,140
NE	770	2,530	4,830
NM	8	160	208
OK	23	350	714
SD	176	230	469
TX	128	2,960	5,685
WA	12	*159	*369
Oth Sts	300	390	660
US	2,160	*12,092	*22,461

* Revised.

¹ Inventory is the number on hand January 1 of the following year.

**Cattle on Feed: Number of Feedlots, Inventory, and Marketings,
by Size of Feedlot, State, and United States 2007 ¹**

State	Feedlot Capacity in Number of Head					
	1,000 - 3,999			4,000 - 15,999		
	Lots	Inventory	Cattle Marketed	Lots	Inventory	Cattle Marketed
	<i>Number</i>	<i>1,000 Head</i>	<i>1,000 Head</i>	<i>Number</i>	<i>1,000 Head</i>	<i>1,000 Head</i>
AZ						
CA	4	4	5	3	11	13
CO	58	60	85	48	190	280
ID	14	14	31	18	68	145
IA	303	375	540	² 42	² 195	² 295
KS	60	70	135	76	440	810
NE	525	430	850	203	1,060	2,030
NM				² 4	² 10	² 18
OK	3	4	7	11	48	82
SD	148	110	202	² 28	² 120	² 267
TX	11	10	20	37	250	400
WA	² 5	² 20	² 28	² 4	² 46	² 118
Oth Sts	245	190	290	² 55	² 200	² 370
US	1,373	1,273	2,175	525	2,512	4,509

State	Feedlot Capacity in Number of Head					
	16,000 - 31,999			32,000 and Over		
	Lots	Inventory	Cattle Marketed	Lots	Inventory	Cattle Marketed
	<i>Number</i>	<i>1,000 Head</i>	<i>1,000 Head</i>	<i>Number</i>	<i>1,000 Head</i>	<i>1,000 Head</i>
AZ	² 3	² 27	² 34	3	341	319
CA	7	102	128	7	443	588
CO	13	225	355	13	625	1,220
ID	² 7	² 153	² 348			
IA						
KS	33	630	1,305	31	1,340	2,890
NE	29	525	1,035	13	515	915
NM	2	45	43	2	105	147
OK	3	48	130	6	250	495
SD						
TX	31	540	995	49	2,160	4,270
WA				3	*93	*223
Oth Sts						
US	133	2,339	4,495	129	*5,968	*11,282

* Revised.

¹ Inventory is the number on hand January 1 of the following year.

² Lots, inventory, and marketings from other size groups are included to avoid disclosing individual operations. The United States totals show the actual number of feedlots, inventory, and number of animals marketed in each size group. The sum of the numbers shown by State under a specified size group may or may not add to the United States total for that size group since for some States' size groups are combined to avoid disclosing individual operations.

**Cattle on Feed: Number of Feedlots, Inventory, and Marketings,
by Size of Feedlot, Region, and United States 2007**

Region	Feedlot Capacity in Number of Head					
	16,000 - 23,999			24,000 - 31,999		
	Lots	Inventory	Cattle Marketed	Lots	Inventory	Cattle Marketed
	<i>Number</i>	<i>1,000 Head</i>	<i>1,000 Head</i>	<i>Number</i>	<i>1,000 Head</i>	<i>1,000 Head</i>
AZ,CA,TX	21	291	493	18	374	657
CO,KS,NE	48	730	1,375	27	650	1,320
Oth Sts	9	130	298	10	164	352
US	78	1,151	2,166	55	1,188	2,329
Region	32,000 - 49,999			50,000 and Over		
	Lots	Inventory	Cattle Marketed	Lots	Inventory	Cattle Marketed
	<i>Number</i>	<i>1,000 Head</i>	<i>1,000 Head</i>	<i>Number</i>	<i>1,000 Head</i>	<i>1,000 Head</i>
AZ,CA,TX	29	984	1,654	30	1,960	3,523
CO,KS,NE	39	1,300	2,540	18	1,180	2,485
Oth Sts	3	106	182	10	438	898
US	71	2,390	4,376	58	*3,578	*6,906

* Revised.

¹ Inventory is the number on hand January 1 of the following year.

Terms and Definitions of Cattle on Feed Estimates

Number of feedlots is the number of lots operating at the end of the year with inventory of cattle on feed.

Cattle on feed are animals being fed a ration of grain, silage, hay and/or protein supplement for slaughter market that are expected to produce a carcass that will grade select or better. It excludes cattle being "backgrounded only" for later sale as feeders or later placement in another feedlot.

Placements are cattle put into a feedlot, fed a ration which will produce a carcass that will grade select or better, and are intended for the slaughter market.

Marketings are cattle shipped out of feedlots to a slaughter market.

Other disappearance includes death loss, movement from feedlots to pasture, and shipments to other feedlots for further feeding.

Reliability of Cattle on Feed Estimates

Survey Procedures: During January and July all known feedlots in the U.S. with capacity of 1,000 or more head are surveyed to provide data for cattle on feed estimates. During the other months, all known feedlots from 17 States are surveyed. The 17 States account for 98 percent of the cattle on feed in feedlots with capacity of 1,000 or more head.

Estimating Procedures: These cattle on feed estimates were prepared by the Agricultural Statistics Board after reviewing recommendations and analysis submitted by each State office. Regional and State survey data were reviewed for reasonableness with each other and with estimates from the previous month when setting the current estimates.

Revision Policy: Revisions to previous estimates are made to improve month to month relationships. Estimates for the previous month are subject to revision in all States each month when current estimates are made. In February, all monthly estimates for the previous year, and the number of feedlots and annual marketings from two years ago are reviewed and subject to revisions. The reviews are primarily based on slaughter data, state check-off or brand data, and any other data that may have been received after the original estimate was made. Estimates will also be reviewed after data from the Census of Agriculture are available. No revisions will be made after that date and estimates become final.

Reliability: Since all 1,000+ capacity cattle on feed operators in every State are not included in the monthly survey, survey estimates are subject to sampling variability. Survey results are also subject to non-sampling errors such as omissions, duplications, and mistakes in reporting, recording, and processing the data. The effects of these errors cannot be measured directly. They are minimized through rigid quality controls in the data collection process and through a careful review of all reported data for consistency and reasonableness.

To assist users in evaluating the reliability of estimates in this report, the "**Root Mean Square Error**" is shown for selected items in the following table. The "Root Mean Square Error" is a statistical measure based on past performance and is computed using the differences between first and latest estimates. The "Root Mean Square Error" for cattle on feed inventory estimates over the past 24 months is less than 0.1 percent (0.03). This means that chances are 2 out of 3 that the final estimate will not be above or below the current estimate of 11.3 million head by more than 0.03 percent. Chances are 9 out of 10 that the difference will not exceed 0.1 percent.

The following table also shows a 24 month record of the range of differences between first and latest estimates for selected items. Using estimates of number on feed as an example, changes between the first estimate and the latest estimate during the past 24 months have averaged 1,000 head, ranging from 0 to 18,000 head. During this period the initial estimate has been above the final estimate 1 time and has been below the final estimate 4 times. This does not imply that the initial estimate is likely to understate or overstate final inventory.

Reliability of Monthly Cattle on Feed Estimates ¹

Item	Root Mean Square Error	90% Confidence Level		Difference Between First and Final Estimates			Number of Months	
		Percent	(000) Head	Average	Smallest	Largest	First Above Final	First Below Final
	<i>Percent</i>	<i>Percent</i>	<i>1,000 Head</i>	<i>1,000 Head</i>	<i>1,000 Head</i>	<i>1,000 Head</i>	<i>Number</i>	<i>Number</i>
Number on Feed	0.0	0.1	11.3	1	0	18	1	4
Placements	0.2	0.3	5.6	2	0	10	4	5
Marketings	0.2	0.3	5.2	2	0	10	5	2

¹ Based on data for the past 24 months.

Information Contacts

Listed below are the commodity specialists in the Livestock Branch of the National Agricultural Statistics Service to contact for additional information.

Dan Kerestes, Chief, Livestock Branch (202) 720-3570

Livestock Section

Scott Hollis, Head, Livestock Section (202) 690-2424
 Jim Collom - Dairy Products (202) 690-3236
 Joe Gaynor - Dairy Products Prices (202) 690-2168
 Jason Hardegree - Cattle, Cattle on Feed (202) 720-3040
 Sherry Bertramsen - Livestock Slaughter (515) 284-4340
 Everett Olbert - Sheep and Goats (202) 720-4751
 Mike Miller - Milk Production and Milk Cows (202) 720-3278
 Nick Streff - Hogs and Pigs (202) 720-3106

ACCESS TO REPORTS!!

For your convenience, there are several ways to obtain NASS reports, data products, and services:

INTERNET ACCESS

All NASS reports are available free of charge on the worldwide Internet. For access, connect to the Internet and go to the NASS Home Page at: www.nass.usda.gov.

E-MAIL SUBSCRIPTION

All NASS reports are available by subscription free of charge direct to your e-mail address. Starting with the NASS Home Page at www.nass.usda.gov, under the right navigation, *Receive reports by Email*, click on **National** or **State**. Follow the instructions on the screen.

PRINTED REPORTS OR DATA PRODUCTS

CALL OUR TOLL-FREE ORDER DESK: 800-999-6779 (U.S. and Canada)
Other areas, please call 703-605-6220 FAX: 703-605-6900
(Visa, MasterCard, check, or money order acceptable for payment.)

ASSISTANCE

For **assistance** with general agricultural statistics or further information about NASS or its products or services, contact the **Agricultural Statistics Hotline** at **800-727-9540**, 7:30 a.m. to 4:00 p.m. ET, or e-mail: nass@nass.usda.gov.

The U.S. Department of Agriculture (USDA) prohibits discrimination in all its programs and activities on the basis of race, color, national origin, age, disability, and where applicable, sex, marital status, familial status, parental status, religion, sexual orientation, genetic information, political beliefs, reprisal, or because all or a part of an individual's income is derived from any public assistance program. (Not all prohibited bases apply to all programs.) Persons with disabilities who require alternative means for communication of program information (Braille, large print, audiotape, etc.) should contact USDA's TARGET Center at (202) 720-2600 (voice and TDD).

To file a complaint of discrimination, write to USDA, Director, Office of Civil Rights, 1400 Independence Avenue, S.W., Washington, D.C. 20250-9410, or call (800) 795-3272 (voice) or (202) 720-6382 (TDD). USDA is an equal opportunity provider and employer.



Global Agriculture & Rural America in Transition

Food & Energy: Expectations & Realities

February 26-27, 2009

Crystal Gateway Marriott Hotel
Arlington, Virginia

www.usda.gov/oce/forum

Early Bird Registration \$350 until January 23, 2009 * \$375 after January 23

Topical Sessions Will Address:

- *Commodity Markets
- *Trade & Farm Policy
- *Conservation
- *Risk Management
- *Food Prices
- *Rural America
- *Food Safety & Food Security
- *Energy
- *Biotechnology
- *World Markets