

P.L. 94-171 VOTING DISTRICT/STATE LEGISLATIVE DISTRICT OUTLINE MAP (CENSUS 2000)

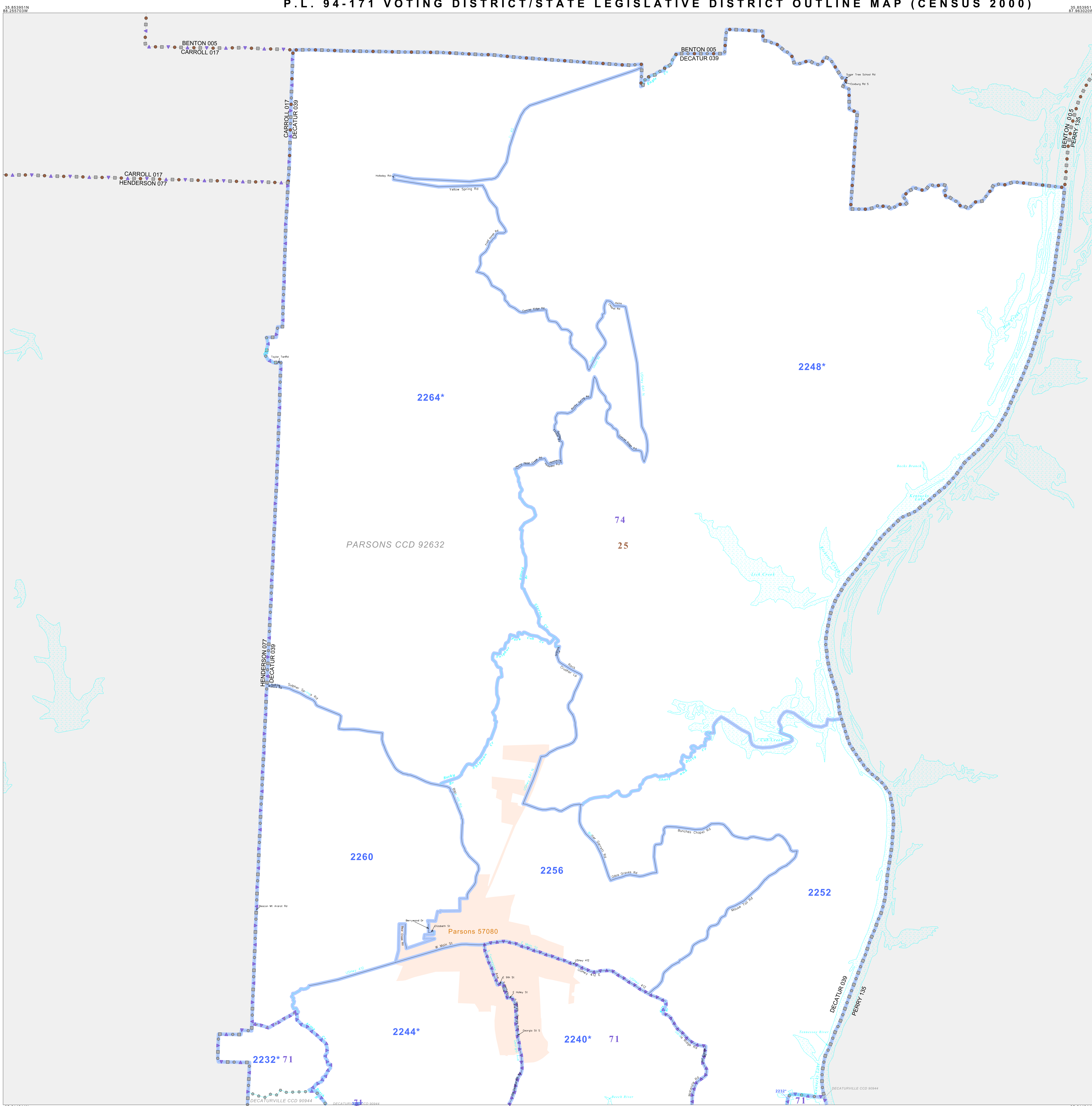
GEOGRAPHIC AREAS LEGEND

SYMBOL	NAME STYLE
*****	INTERNATIONAL
//////	STATE
□□□□	COUNTY
○○○○○	CENSUS COUNTY DIV.
○○○○○	Consolidated City
■	Incorporated Place
■	Census Designated Place
—	Voting District
●●●●●	SLD-Senate
▲▲▲▲▲	SLD-House
⋯	Boundary
Inset	Inset
Out Area	Out Area

1 A "*" following a VTD code indicates an actual voting district. Its absence indicates that the VTD is a pseudo voting district or no information is available as to its status.

Voting Districts

Code	Name
2237*	03 Decaturville Voting District
2240*	08 Parsons Voting District
2242*	05 Parsons Voting District
2248*	07 Jasperite Voting District
2252	01 Perryville Voting District
2256	06 Parsons Voting District
2260	05 Benson Voting District
2264*	08 Hyde Voting District



35 614944N 86 253103W

35 614944N 87 063020W

35 614944N 86 253103W

35 614944N 87 063020W

The plotted map scale is 1:36000

Sheet Location within County

Key to Adjacent Sheets

1
2

All legal boundaries and names are as of January 1, 2000. The boundaries shown on this map are for Census Bureau statistical data collection and tabulation purposes only; their depiction and designation for statistical purposes does not constitute a determination of jurisdictional authority or rights of ownership or entitlement. U.S. DEPARTMENT OF COMMERCE Economics and Statistics Administration U.S. Census Bureau