

LOC/DME I-HFW 109.3 Chan 30	APP CRS 092°	Rwy Idg TDZE Apt Elev	8L 8800 1015 1026	8R 10000 1024 1026
--	------------------------	-----------------------------	---	--

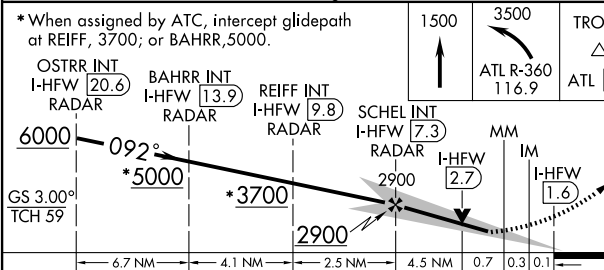
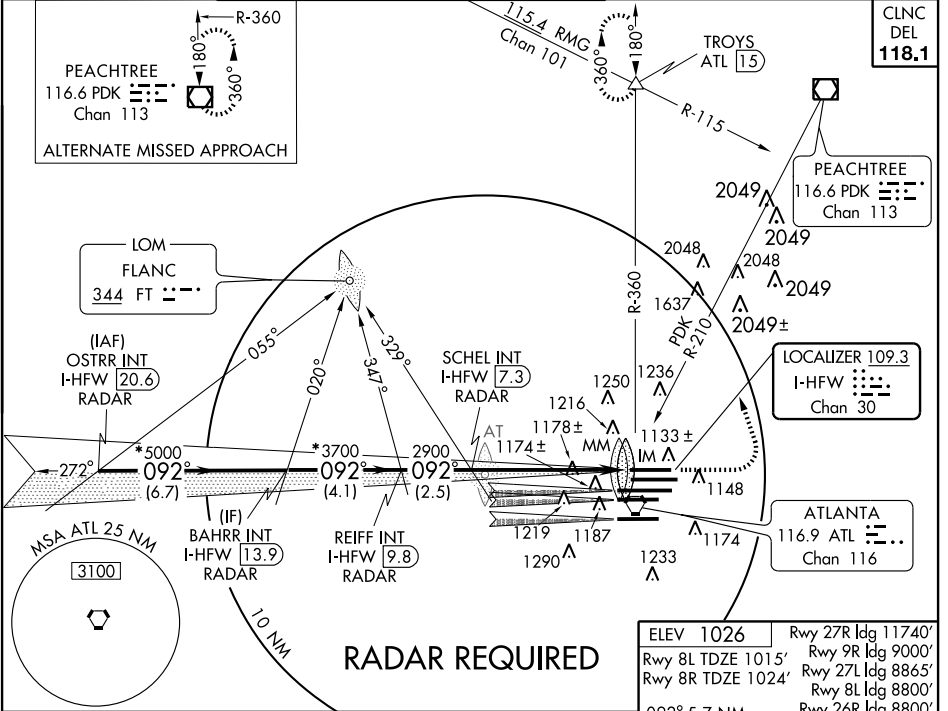
ATLANTA/
HARTSFIELD - JACKSON ATLANTA INTL (ATL)

ILS or LOC RWY 8L

Simultaneous approach authorized with Rwy 9L or 9R or 10, or Rwys 9L and 10. ADF or DME or RADAR REQUIRED.
LOC procedure NA during simultaneous operations.
Inoperative table does not apply to sidestep Rwy 8R.

ALSF-2
MISSED APPROACH: Climb to 1500, then climbing left turn to 3500 via ATL VORTAC R-360 to TROYS Int/ATL 15 DME and hold.

ATIS ARR 119.65	ATLANTA APP CON 127.9 379.9	ATLANTA TOWER 8L-26R 8R-26L 9L-27R 9R-27L 10-28 RWYS DEP 119.1 125.325 123.85 119.3 119.5 381.6	ALL RWYS 121.9 121.75 121.65 381.6	GND CON (8L-26R,8R-26L) (9L-27R,9R-27L) 10-28 RWYS 121.9 121.75 121.65 381.6	ALL RWYS 118.1
---------------------------	--	--	---	---	-----------------------------



ELEV 1026	Rwy 27R Idg 11740'
Rwy 8L TDZE 1015'	Rwy 9R Idg 9000'
Rwy 8R TDZE 1024'	Rwy 27L Idg 8865'
	Rwy 8L Idg 8800'
	Rwy 26R Idg 8800'
092° 5.7 NM from FAF	
1135±	1186△, 1151△, 9000, 10000 X 150, 1041±
1112±	1073±, 11890, 1357, 1030±, 27R, 27L
1073±	1030±
1193	1093
HIRL all runways TDZ/CL Rwy 8L, 9R, 10, 26R, 27L and 28	
FAF to MAP 5.7 NM	
Knots	60 90 120 150 180
Min:Sec	5:42 3:48 2:51 2:17 1:54

CATEGORY	A	B	C	D
S-ILS 8L	1215/18		200 (200-½)	
S-LOC 8L	1440/24	425 (500-½)	1440/40	425 (500-¾)
SIDESTEP RWY 8R	1440/50	416 (500-1)	1440-1½ 416 (500-1½)	1440-2 416 (500-2)

SE-4, 12 MAR 2009 to 09 APR 2009

SE-4, 12 MAR 2009 to 09 APR 2009