

Attachment D

Sensitivity Analysis Charts

Table of Contents

Figure	Page
D-1 Salton Sea Accounting Model sensitivity analysis results with reduction factor for salinity adjusted anywhere from -5 percent to +5 percent.	D-3
D-2 Salton Sea Accounting Model sensitivity analysis results with inflow reduction rates adjusted anywhere between 10,000 to 20,000 af/yr	D-4
D-3 Salton Sea Accounting Model sensitivity analysis results with reductions in inflow beginning anywhere between 0 and 10 years.	D-5
D-4 Salton Sea Accounting Model sensitivity analysis results with starting salinity of the Sea anywhere between 43,000 and 45,000 mg/L.	D-6
D-5 Salton Sea Accounting Model sensitivity analysis results with the salinity of inflow waters adjusted anywhere from -500 mg/L to +500 mg/L	D-7
D-6 Salton Sea Accounting Model sensitivity analysis results with annual precipitation rates adjusted such that average annual precipitation is 2.0 to 3.0 inches	D-8
D-7 Salton Sea Accounting Model sensitivity analysis results with annual evaporation rates adjusted such that average annual evaporation is 69 to 71 inches	D-9
D-8 Salton Sea Accounting Model sensitivity analysis results with areas selected from area/capacity/elevation data adjusted between -5 percent to +5 percent	D-10
D-9 Salton Sea Accounting Model sensitivity analysis results with annual inflows adjusted such that the average annual inflow to the Sea is between -5 percent and 0 percent	D-11
D-10 Salton Sea Accounting Model sensitivity analysis results with Sea volumes increased anywhere from 0 percent to 10 percent due to salinity impacts on volume	D-12

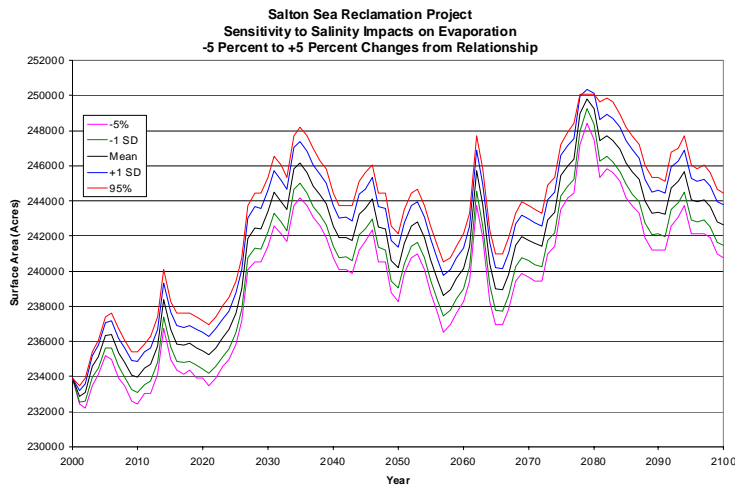
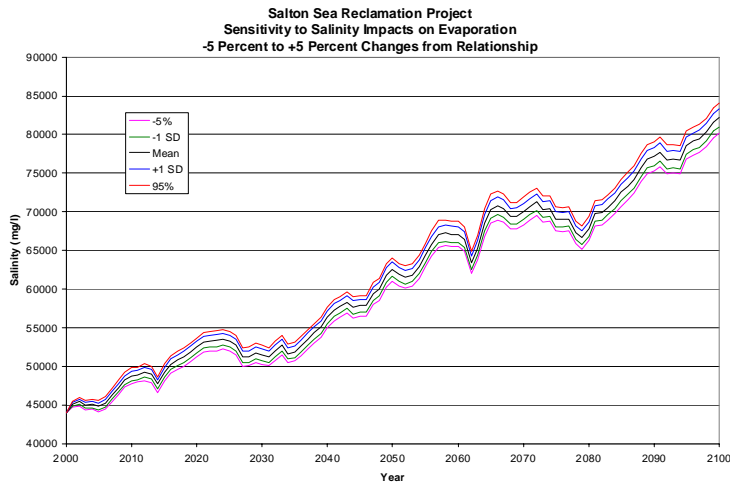
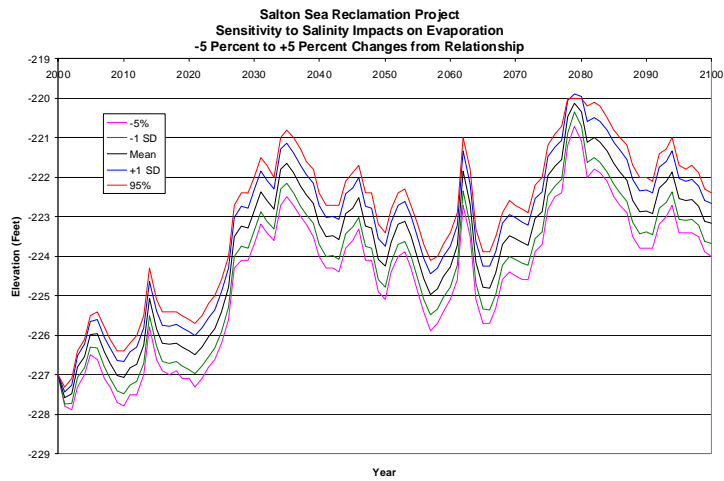


Figure D-1.—Salton Sea Accounting Model sensitivity analysis results with reduction factor for salinity adjusted anywhere from -5 percent to +5 percent.

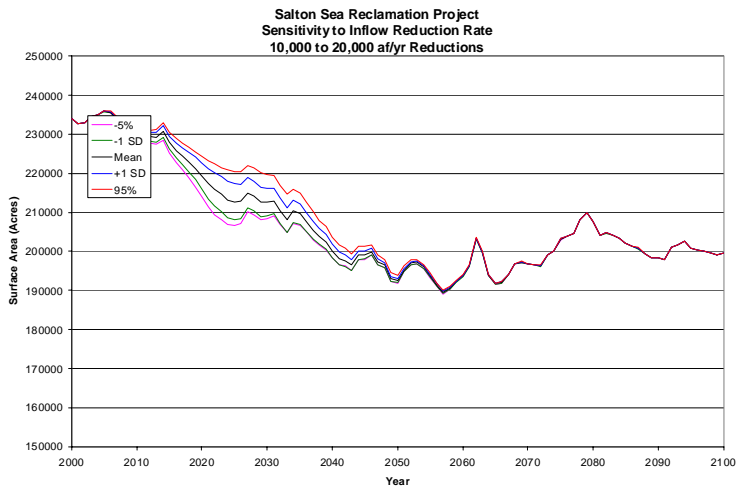
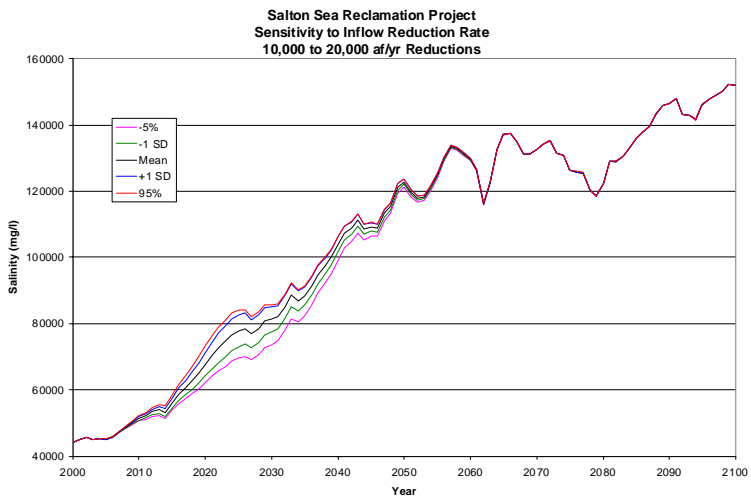
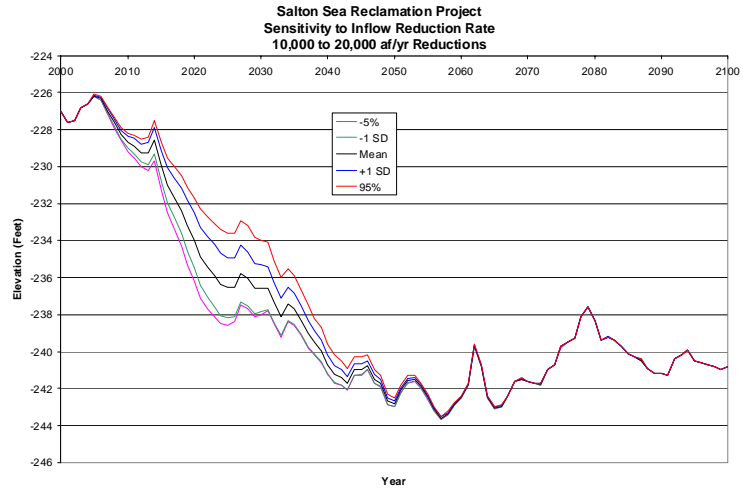


Figure D-2.—Salton Sea Accounting Model sensitivity analysis results with inflow reduction rates adjusted anywhere between 10,000 to 20,000 af/yr.

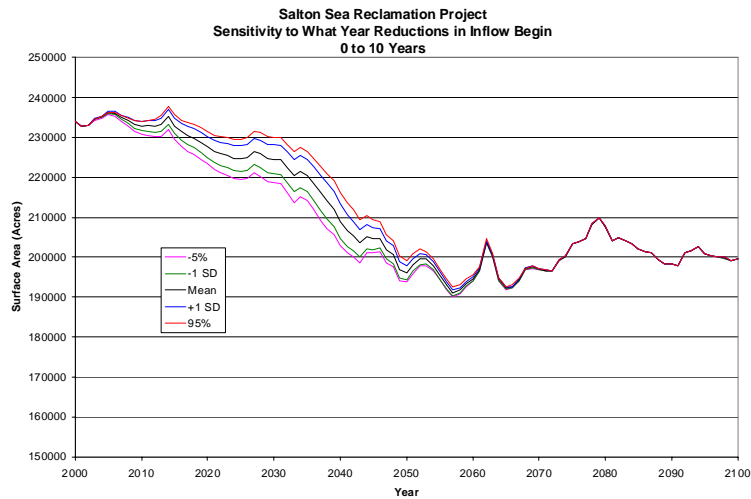
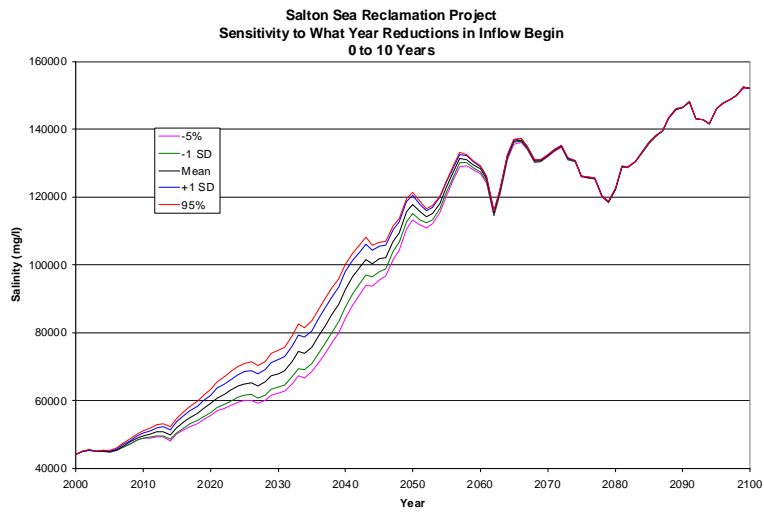
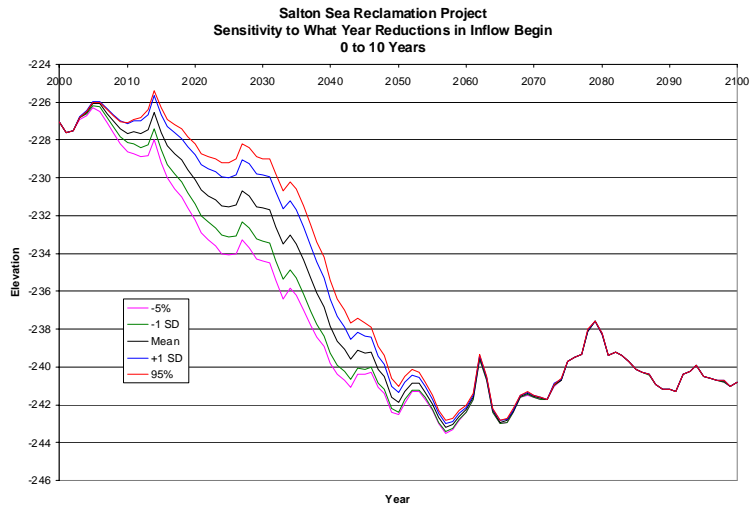


Figure D-3.—Salton Sea Accounting Model sensitivity analysis results with reductions in inflow beginning anywhere between 0 and 10 years.

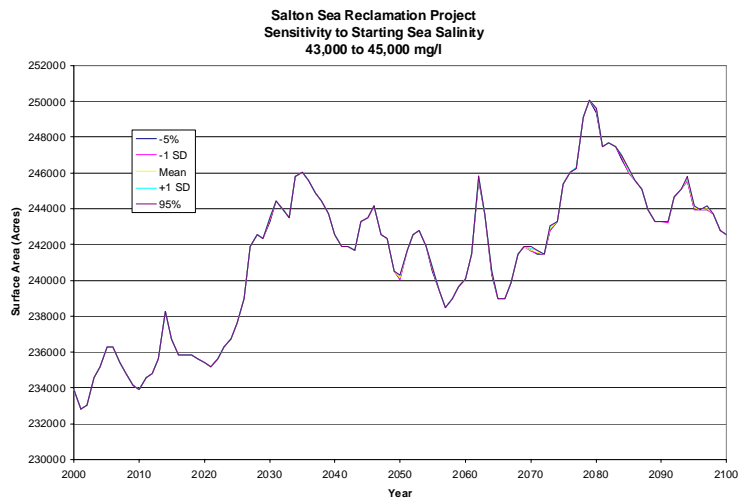
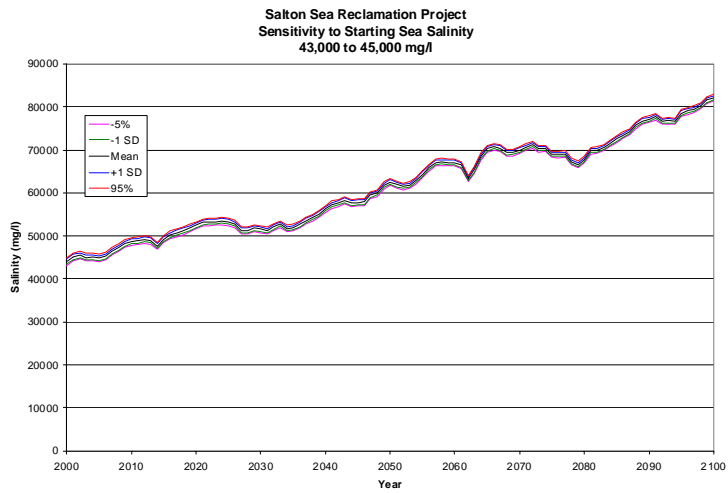
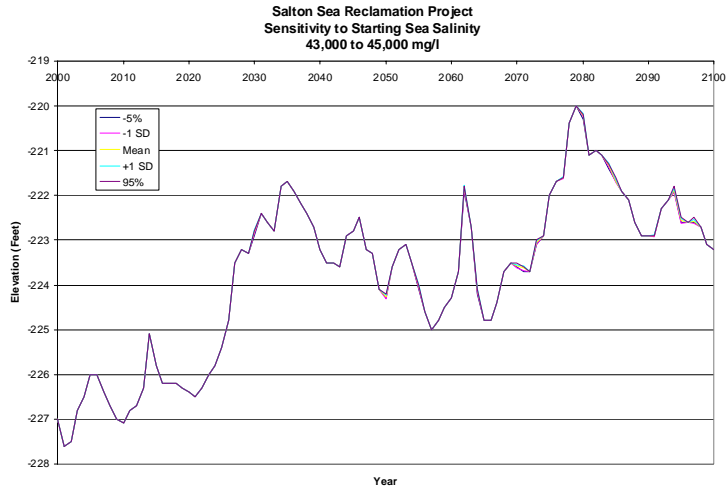


Figure D-4.—Salton Sea Accounting Model sensitivity analysis results with starting salinity of the Sea anywhere between 43,000 and 45,000 mg/L.

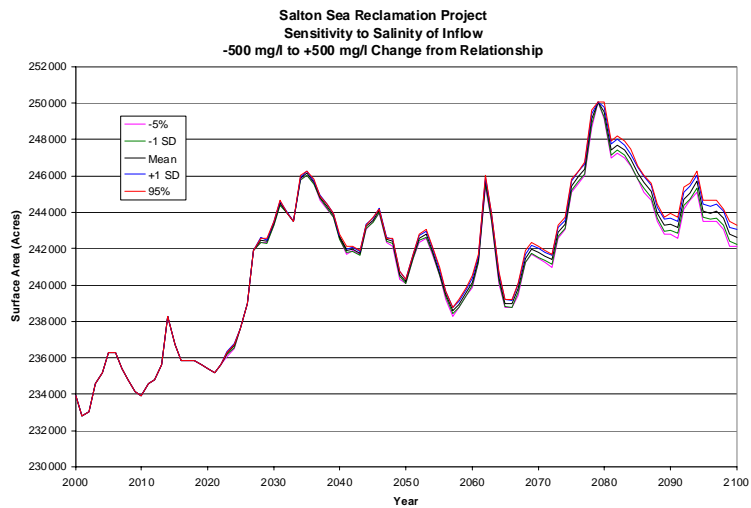
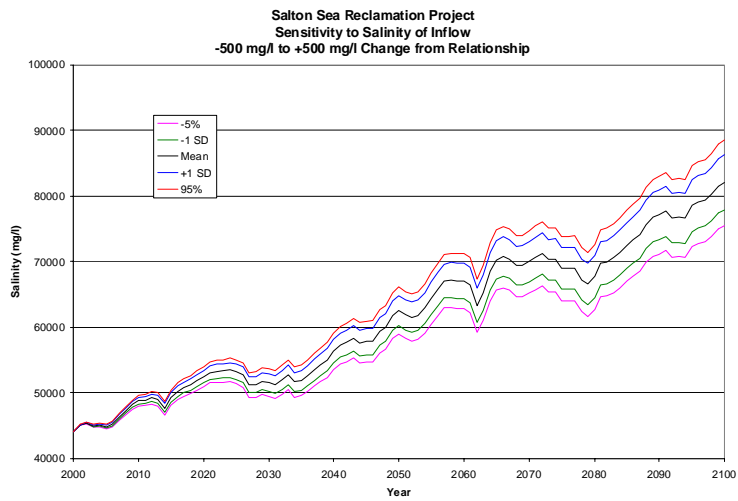
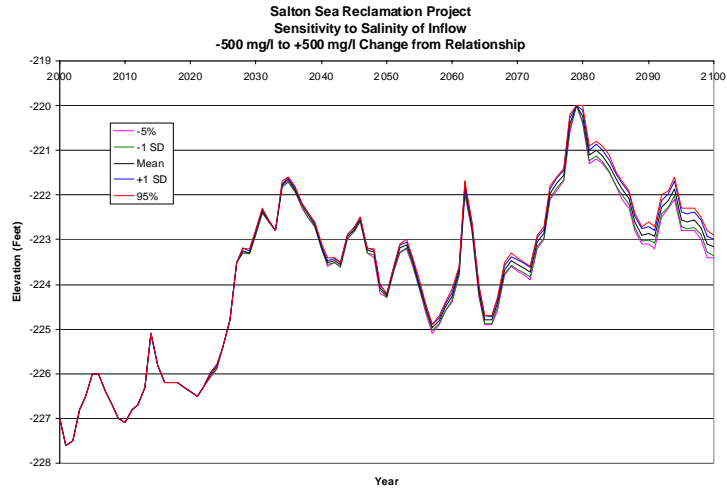


Figure D-5.—Salton Sea Accounting Model sensitivity analysis results with the salinity of inflow waters adjusted anywhere from -500 mg/L to +500 mg/L.

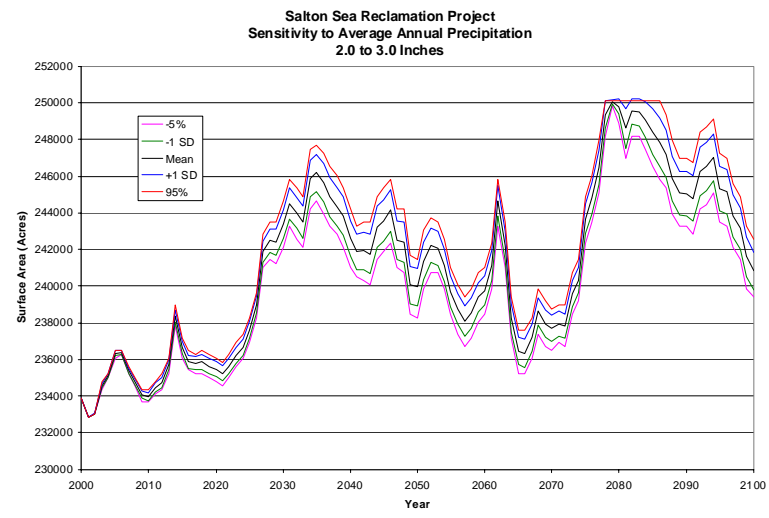
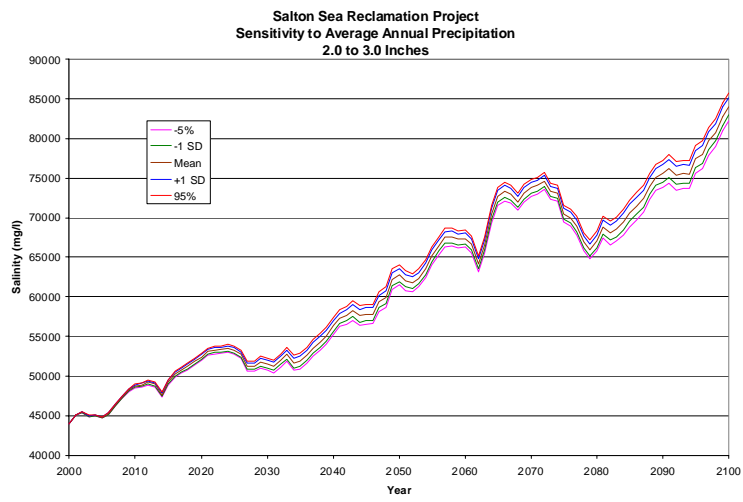
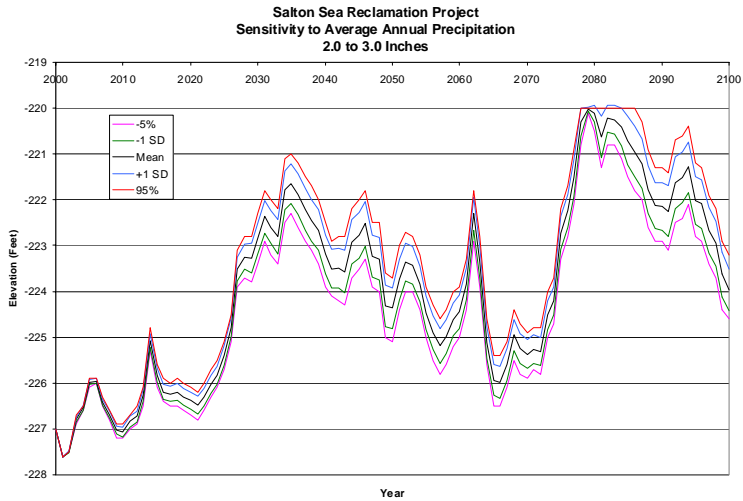


Figure D-6.—Salton Sea Accounting Model sensitivity analysis results with annual precipitation rates adjusted such that average annual precipitation is 2.0 to 3.0 inches

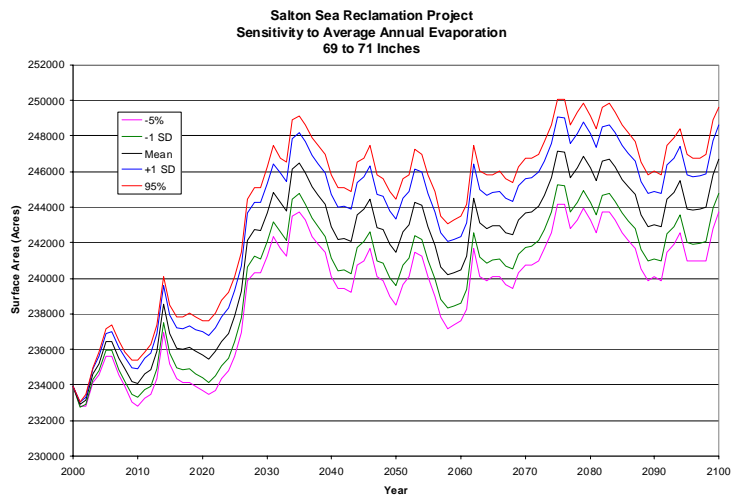
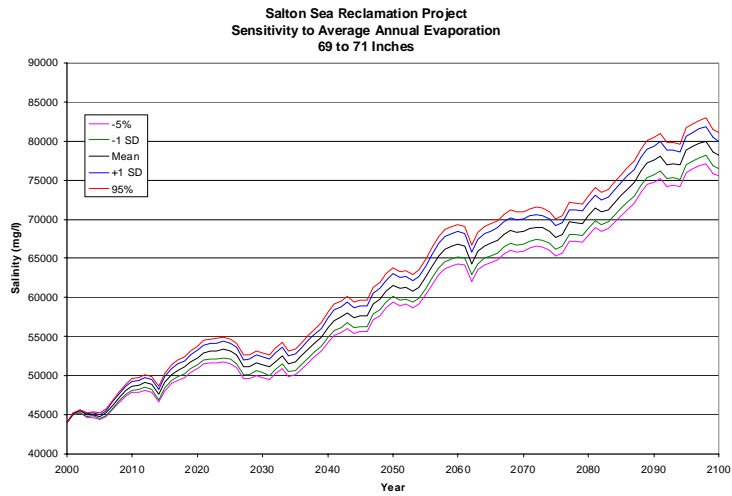
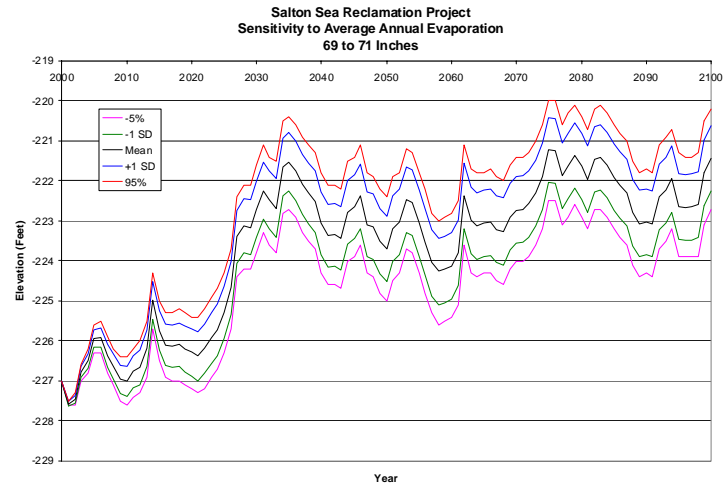


Figure D-7.—Salton Sea Accounting Model sensitivity analysis results with annual evaporation rates adjusted such that average annual evaporation is 69 to 71 inches.

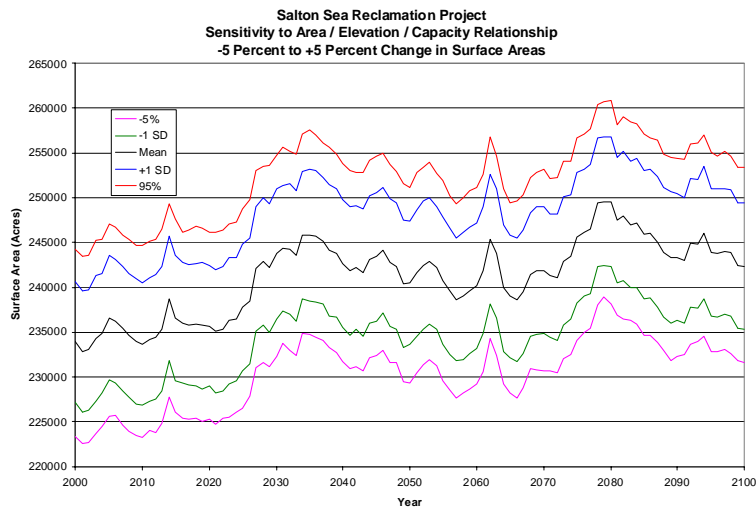
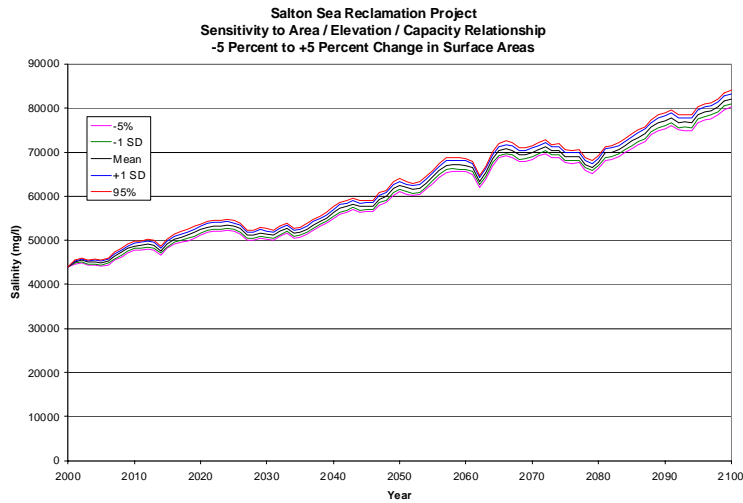
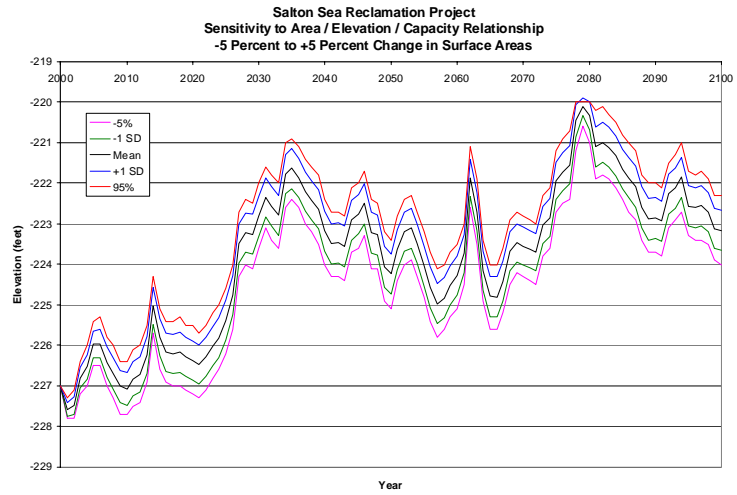


Figure D-8.—Salton Sea Accounting Model sensitivity analysis results with areas selected from area / capacity / elevation data adjusted between -5 percent to +5 percent.

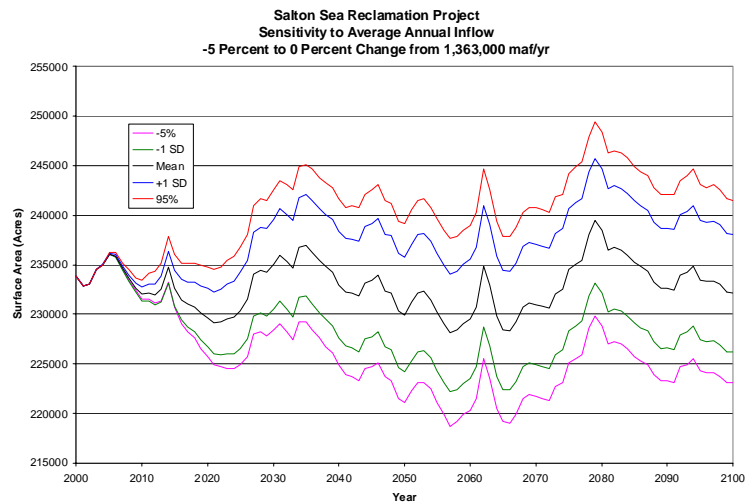
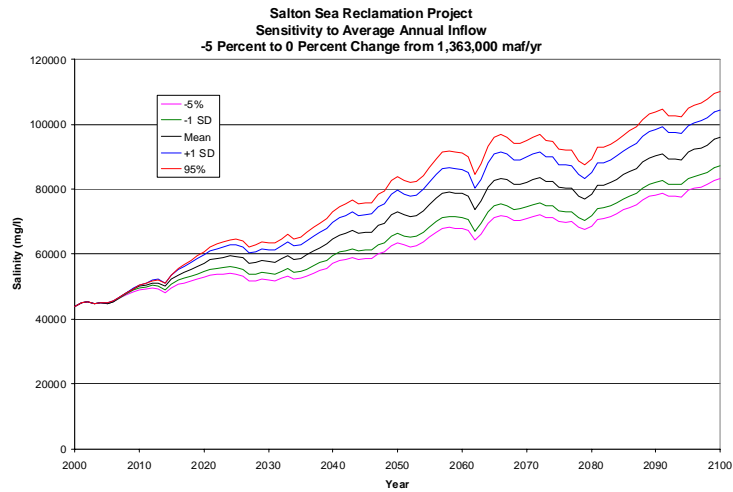
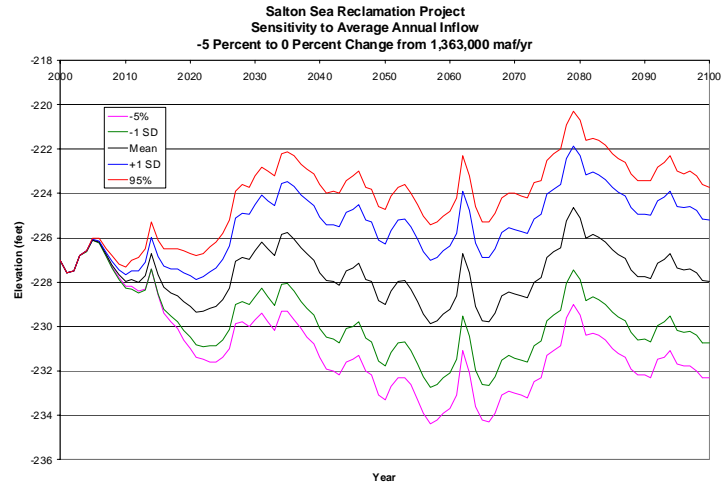


Figure D-9.—Salton Sea Accounting Model sensitivity analysis results with annual inflows adjusted such that the average annual inflow to the Sea is between -5 percent and 0 percent.

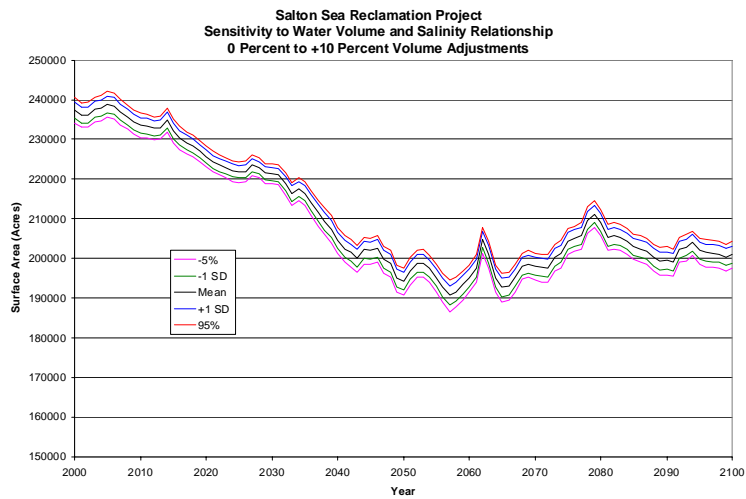
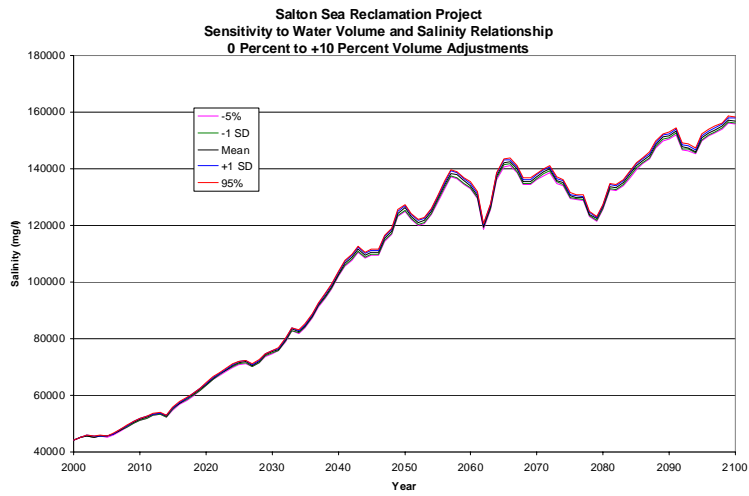
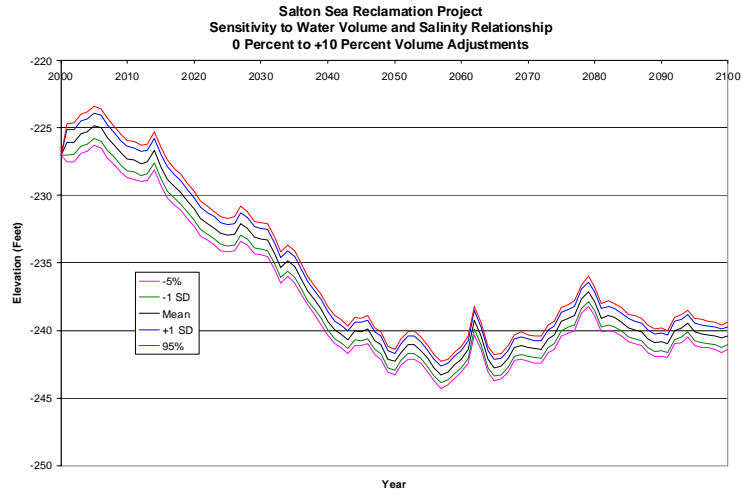


Figure D-10.— Salton Sea Accounting Model sensitivity analysis results with Sea volumes increased anywhere from 0 percent to 10 percent due to salinity impacts on volume.