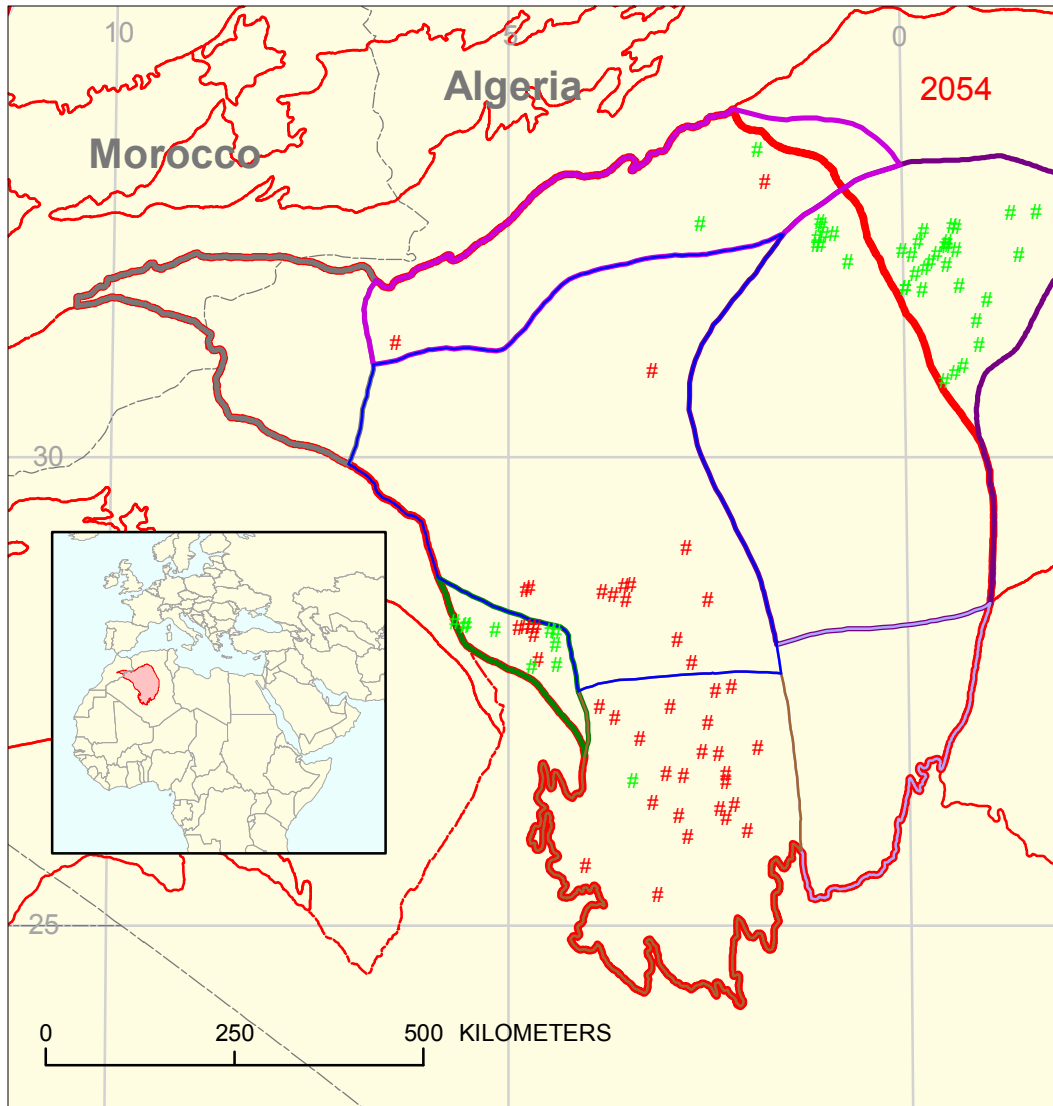


Grand Erg/Ahnet Basin Geologic Province 2058

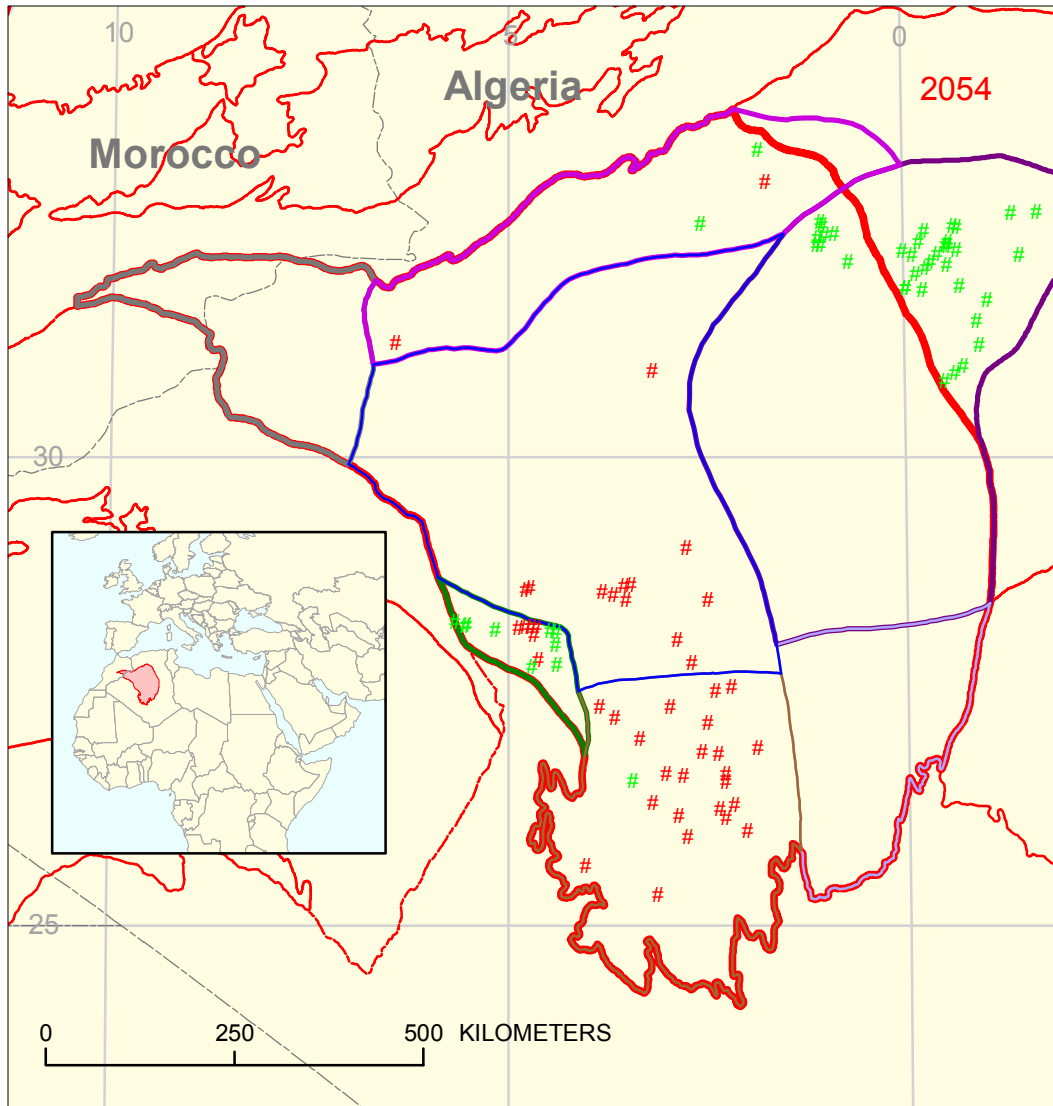


- Tanezzuft-Timimoun
Total Petroleum System 205801
- Tanezzuft-Ahnet
Total Petroleum Sytem 205802
- Tanezzuft-Sbaa
Total Petroleum System 205803
- Tanezzuft-Mouydir
Total Petroleum System 205804

- Tanezzuft-Timimoun Total Petroleum System 205801
- Tanezzuft-Ahnet Total Petroleum System 205802
- Tanezzuft-Sbaa Total Petroleum System 205803
- Tanezzuft-Mouydir Total Petroleum System 205804
- Tanezzuft-Benoud Total Petroleum System 205805
- Tanezzuft-Bechar/Abadla Total Petroleum System 205806

- Tanezzuft-Oued Mya Total Petroleum System 205401
- Grand Erg/Ahnet Basin Geologic Province 2058
- Other geologic province boundary

Grand Erg/Ahnet Basin Geologic Province 2058



- █ Tanezzuft-Benoud
Total Petroleum System 205805
- █ Tanezzuft-Bechar/Abadla
Total Petroleum System 205806

- █ Tanezzuft-Timimoun Total Petroleum System 205801
- █ Tanezzuft-Ahnet Total Petroleum System 205802
- █ Tanezzuft-Sbaa Total Petroleum System 205803
- █ Tanezzuft-Mouydir Total Petroleum System 205804
- █ Tanezzuft-Benoud Total Petroleum System 205805
- █ Tanezzuft-Bechar/Abadla Total Petroleum System 205806

- █ Tanezzuft-Oued Mya Total Petroleum System 205401
- █ Grand Erg/Ahnet Basin Geologic Province 2058
- █ Other geologic province boundary

**Grand Erg/Ahnet Basin, Province 2058
Assessment Results Summary - Allocated Resources**

[MMBO, million barrels of oil. BCFG, billion cubic feet of gas. MMBNGL, million barrels of natural gas liquids. MFS, minimum field size assessed (MMBO or BCFG). Prob., probability (including both geologic and accessibility probabilities) of at least one field equal to or greater than the MFS. Results shown are fully risked estimates. For gas fields, all liquids are included under the NGL (natural gas liquids) category. F95 represents a 95 percent chance of at least the amount tabulated. Other fractiles are defined similarly. Fractiles are additive under the assumption of perfect positive correlation. Shading indicates not applicable]

Code and Field Type	MFS	Prob. (0-1)	Undiscovered Resources											
			Oil (MMBO)				Gas (BCFG)				NGL (MMBNGL)			
			F95	F50	F5	Mean	F95	F50	F5	Mean	F95	F50	F5	Mean

2058 Total: Assessed onshore portions of Grand Erg/Ahnet Basin Province

Oil Fields		1.00	174	521	1,250	599	196	625	2,033	828	10	32	117	45
Gas Fields							1,823	6,293	18,302	7,836	78	284	879	362
Total		1.00	174	521	1,250	599	2,018	6,919	20,334	8,664	88	316	997	407

2058 Total: Assessed offshore portions of Grand Erg/Ahnet Basin Province

Oil Fields		0.00	0	0	0	0	0	0	0	0	0	0	0	0
Gas Fields							0	0	0	0	0	0	0	0
Total		0.00	0	0	0	0	0	0	0	0	0	0	0	0

2058 Grand Total: Assessed portions of Grand Erg/Ahnet Basin Province

Oil Fields		1.00	174	521	1,250	599	196	625	2,033	828	10	32	117	45
Gas Fields							1,823	6,293	18,302	7,836	78	284	879	362
Total		1.00	174	521	1,250	599	2,018	6,919	20,334	8,664	88	316	997	407

Grand Erg/Ahnet Basin, Province 2058
Assessment Results Summary - Allocated Resources

[MMBO, million barrels of oil. BCFG, billion cubic feet of gas. MMBNGL, million barrels of natural gas liquids. MFS, minimum field size assessed (MMBO or BCFG). Prob., probability (including both geologic and accessibility probabilities) of at least one field equal to or greater than the MFS. Results shown are fully risked estimates. For gas fields, all liquids are included under the NGL (natural gas liquids) category. F95 represents a 95 percent chance of at least the amount tabulated. Other fractiles are defined similarly. Fractiles are additive under the assumption of perfect positive correlation. Shading indicates not applicable]

Code and Field Type	MFS	Prob. (0-1)	Undiscovered Resources											
			Oil (MMBO)				Gas (BCFG)				NGL (MMBNGL)			
			F95	F50	F5	Mean	F95	F50	F5	Mean	F95	F50	F5	Mean

205401 Tanezzuft-Oued Mya Total Petroleum System

20540101 Tanezzuft-Oued Mya Structural/Stratigraphic Assessment Unit (33% of undiscovered oil fields and 33% of undiscovered gas fields allocated to ONSHORE province 2058)

Oil Fields	10	1.00	96	265	479	274	77	222	447	237	3	9	19	10
Gas Fields	60						89	468	1,201	535	4	23	63	27
Total			96	265	479	274	166	690	1,648	772	7	31	82	36

205801 Tanezzuft-Timimoun Total Petroleum System

20580101 Tanezzuft-Timimoun Structural/Stratigraphic Assessment Unit (100% of undiscovered oil fields and 100% of undiscovered gas fields allocated to ONSHORE province 2058)

Oil Fields	4	1.00	7	25	80	31	24	90	307	118	1	5	19	7
Gas Fields	24						387	920	1,942	1,010	17	43	98	48
Total			7	25	80	31	410	1,010	2,249	1,128	18	48	117	56

205802 Tanezzuft-Ahnet Total Petroleum System

20580201 Tanezzuft-Ahnet Structural/Stratigraphic Assessment Unit (100% of undiscovered oil fields and 100% of undiscovered gas fields allocated to ONSHORE province 2058)

Oil Fields	4	1.00	6	25	89	34	3	14	50	19	0	1	3	1
Gas Fields	24						872	2,678	5,963	2,955	40	130	316	148
Total			6	25	89	34	875	2,691	6,013	2,973	40	131	319	149

Grand Erg/Ahnet Basin, Province 2058
Assessment Results Summary - Allocated Resources

[MMBO, million barrels of oil. BCFG, billion cubic feet of gas. MMBNGL, million barrels of natural gas liquids. MFS, minimum field size assessed (MMBO or BCFG). Prob., probability (including both geologic and accessibility probabilities) of at least one field equal to or greater than the MFS. Results shown are fully risked estimates. For gas fields, all liquids are included under the NGL (natural gas liquids) category. F95 represents a 95 percent chance of at least the amount tabulated. Other fractiles are defined similarly. Fractiles are additive under the assumption of perfect positive correlation. Shading indicates not applicable]

Code and Field Type	MFS	Prob. (0-1)	Undiscovered Resources											
			Oil (MMBO)				Gas (BCFG)				NGL (MMBNGL)			
			F95	F50	F5	Mean	F95	F50	F5	Mean	F95	F50	F5	Mean

205803 Tanezzuft-Sbaa Total Petroleum System

20580301 Tanezzuft-Sbaa Structural/Stratigraphic Assessment Unit (100% of undiscovered oil fields and 100% of undiscovered gas fields allocated to ONSHORE province 2058)

Oil Fields	10	1.00	45	146	334	162	23	78	194	89	1	5	12	5
Gas Fields	60						137	443	1,360	555	1	4	14	6
Total		1.00	45	146	334	162	160	521	1,553	645	3	9	26	11

205804 Tanezzuft-Mouydir Total Petroleum System

20580401 Tanezzuft-Mouydir Structural/Stratigraphic Assessment Unit (100% of undiscovered oil fields and 100% of undiscovered gas fields allocated to ONSHORE province 2058)

Oil Fields	5	0.40	0	0	54	12	0	0	203	47	0	0	12	3
Gas Fields	30						0	0	1,056	245	0	0	51	12
Total		0.40	0	0	54	12	0	0	1,259	292	0	0	63	14

205805 Tanezzuft-Benoud Total Petroleum System

20580501 Tanezzuft-Benoud Structural/Stratigraphic Assessment Unit (95% of undiscovered oil fields and 95% of undiscovered gas fields allocated to ONSHORE province 2058)

Oil Fields	4	1.00	20	60	148	69	68	221	576	259	4	13	36	16
Gas Fields	24						339	1,786	5,209	2,155	16	84	259	103
Total		1.00	20	60	148	69	407	2,007	5,785	2,414	19	97	295	119

Grand Erg/Ahnet Basin, Province 2058
Assessment Results Summary - Allocated Resources

[MMBO, million barrels of oil. BCFG, billion cubic feet of gas. MMBNGL, million barrels of natural gas liquids. MFS, minimum field size assessed (MMBO or BCFG). Prob., probability (including both geologic and accessibility probabilities) of at least one field equal to or greater than the MFS. Results shown are fully risked estimates. For gas fields, all liquids are included under the NGL (natural gas liquids) category. F95 represents a 95 percent chance of at least the amount tabulated. Other fractiles are defined similarly. Fractiles are additive under the assumption of perfect positive correlation. Shading indicates not applicable]

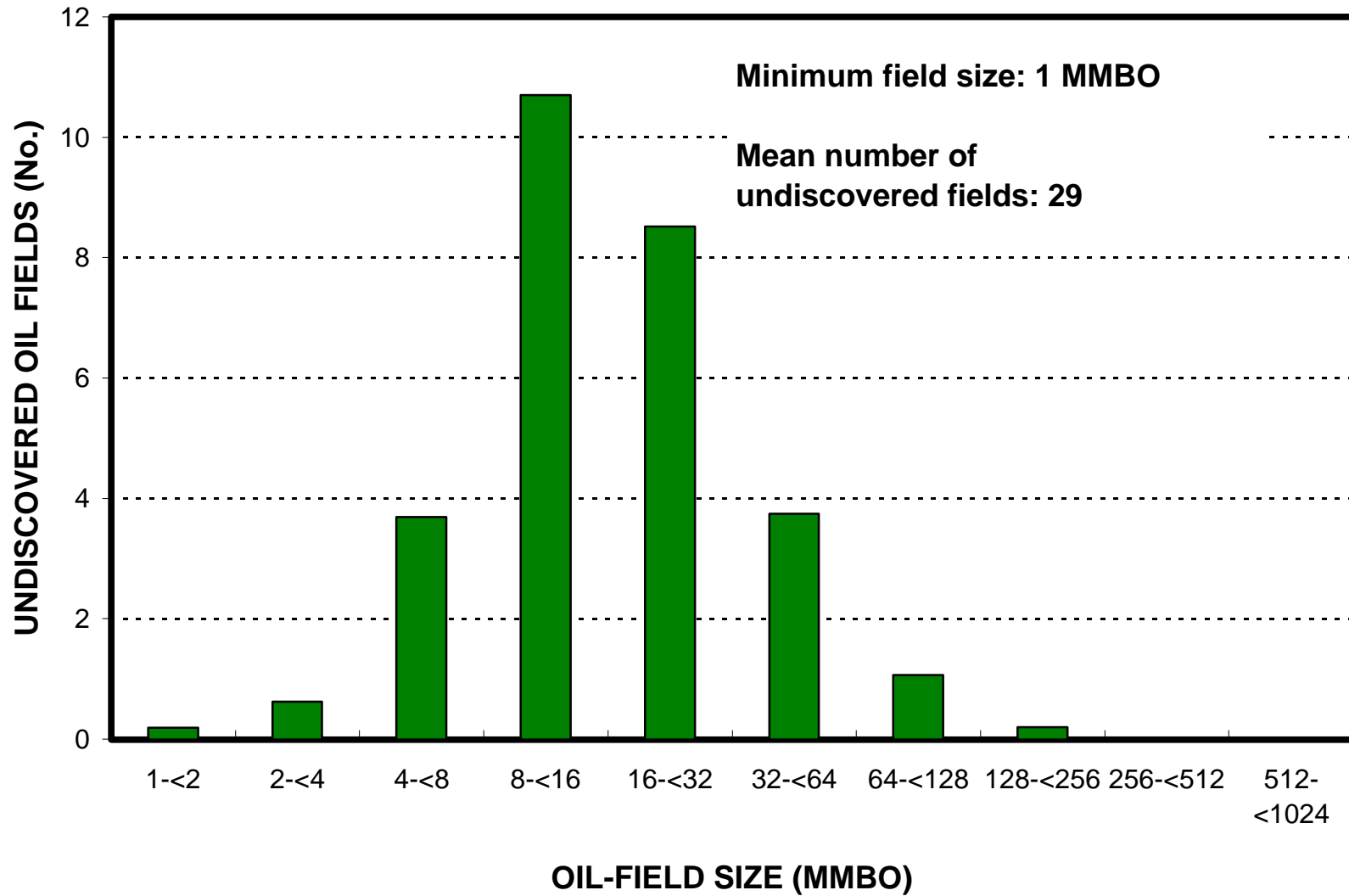
Code and Field Type	MFS	Prob. (0-1)	Undiscovered Resources											
			Oil (MMBO)				Gas (BCFG)				NGL (MMBNGL)			
			F95	F50	F5	Mean	F95	F50	F5	Mean	F95	F50	F5	Mean

205806 Tanezzuft-Bechar/Abadla Total Petroleum System

20580601 Tanezzuft-Bechar/Abadla Structural/Stratigraphic Assessment Unit (100% of undiscovered oil fields and 100% of undiscovered gas fields allocated to ONSHORE province 2058)

Oil Fields	1	0.40	0	0	66	16	0	0	256	59	0	0	16	4
Gas Fields	6						0	0	1,571	382	0	0	77	18
Total		0.40	0	0	66	16	0	0	1,827	441	0	0	93	22

Grand Erg/Ahnet Basin, Province 2058 Undiscovered Field-Size Distribution



Grand Erg/Ahnet Basin, Province 2058 Undiscovered Field-Size Distribution

