

APPENDIX 25

Tables and Graphs  
Green Mountain Common Allotment  
March 17, 2008

Grazing Section:

Table 1

Sheep AUMs (By Year and Alternative)

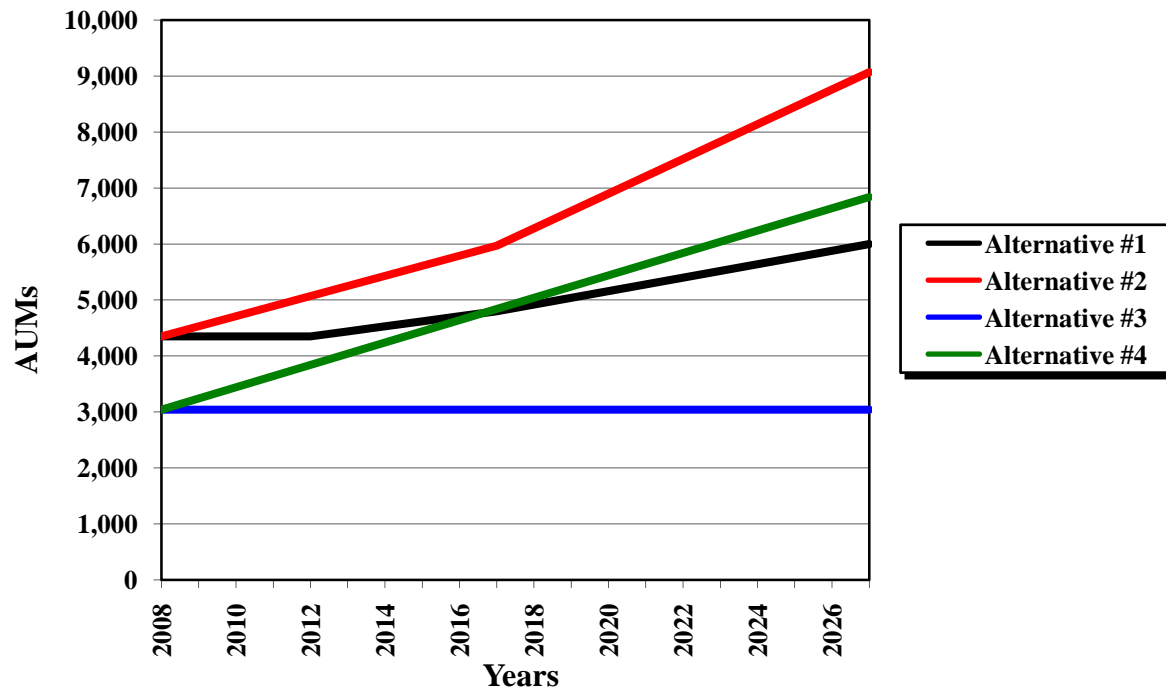
	2008	2009	2010	2011	2012	2013	2014	2015	2016	2017
Alternative #1	4,350	4,350	4,350	4,350	4,350	4,440	4,530	4,620	4,710	4,800
Alternative #2	4,350	4,530	4,710	4,890	5,070	5,250	5,430	5,610	5,790	5,970
Alternative #3	3,040	3,040	3,040	3,040	3,040	3,040	3,040	3,040	3,040	3,040
Alternative #4	3,040	3,240	3,440	3,640	3,840	4,040	4,240	4,440	4,640	4,840

Table 1 (Cont.)

Sheep AUMs (Cont. By Year and Alternative)

	2018	2019	2020	2021	2022	2023	2024	2025	2026	2027
Alternative #1	4,920	5,040	5,160	5,280	5,400	5,520	5,640	5,760	5,880	6,000
Alternative #2	6,280	6,590	6,900	7,210	7,520	7,830	8,140	8,450	8,760	9,070
Alternative #3	3,040	3,040	3,040	3,040	3,040	3,040	3,040	3,040	3,040	3,040
Alternative #4	5,040	5,240	5,440	5,640	5,840	6,040	6,240	6,440	6,640	6,840

### Sheep AUMs<sup>1</sup>



<sup>1</sup>BLM specialist estimate

Table 2

**Cattle AUMs (By Year and Alternative)**

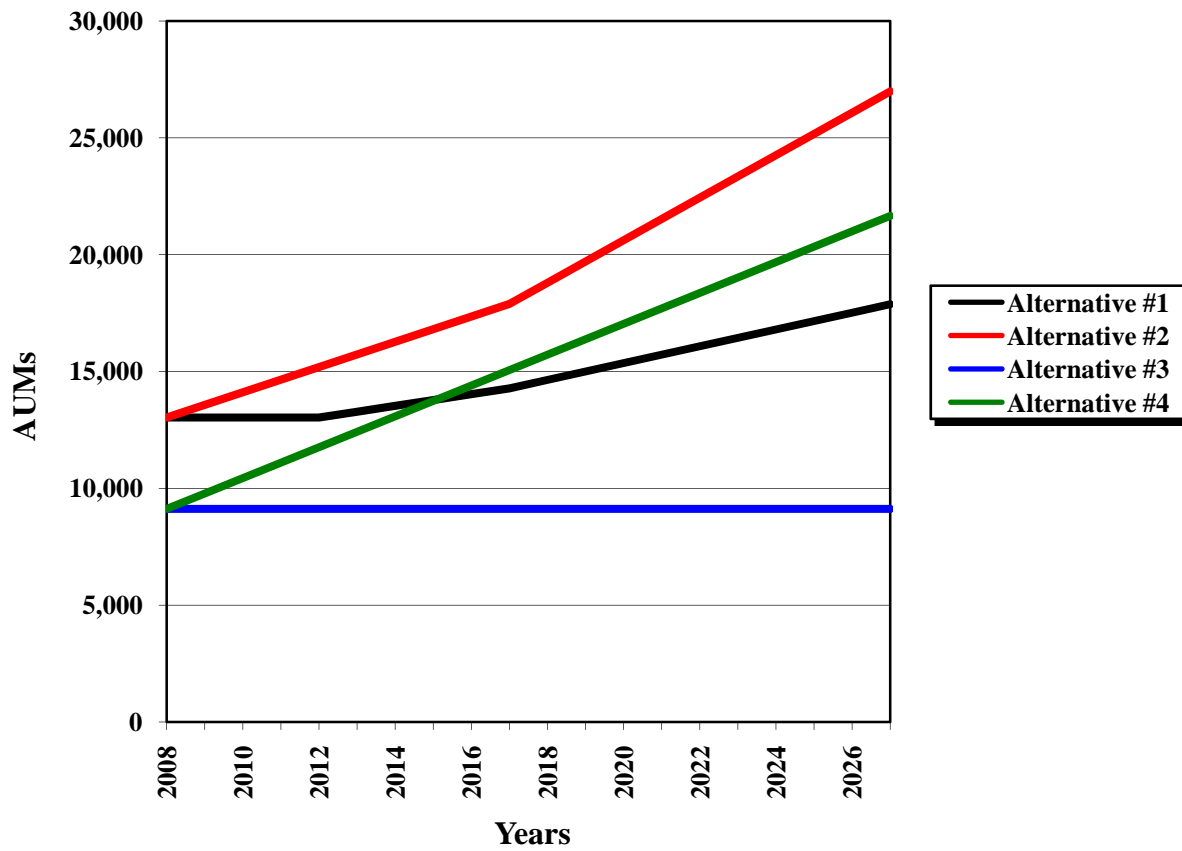
	<b>2008</b>	<b>2009</b>	<b>2010</b>	<b>2011</b>	<b>2012</b>	<b>2013</b>	<b>2014</b>	<b>2015</b>	<b>2016</b>	<b>2017</b>
<b>Alternative #1</b>	13,030	13,030	13,030	13,030	13,030	13,280	13,530	13,780	14,030	14,280
<b>Alternative #2</b>	13,030	13,570	14,110	14,650	15,190	15,730	16,270	16,810	17,350	17,890
<b>Alternative #3</b>	9,120	9,120	9,120	9,120	9,120	9,120	9,120	9,120	9,120	9,120
<b>Alternative #4</b>	9,120	9,780	10,440	11,100	11,760	12,420	13,080	13,740	14,400	15,060

Table 2 (Cont.)

**Cattle AUMs (Cont. By Year and Alternative)**

	<b>2018</b>	<b>2019</b>	<b>2020</b>	<b>2021</b>	<b>2022</b>	<b>2023</b>	<b>2024</b>	<b>2025</b>	<b>2026</b>	<b>2027</b>
<b>Alternative #1</b>	14,640	15,000	15,360	15,720	16,080	16,440	16,800	17,160	17,520	17,880
<b>Alternative #2</b>	18,800	19,710	20,620	21,530	22,440	23,350	24,260	25,170	26,080	26,990
<b>Alternative #3</b>	9,120	9,120	9,120	9,120	9,120	9,120	9,120	9,120	9,120	9,120
<b>Alternative #4</b>	15,720	16,380	17,040	17,700	18,360	19,020	19,680	20,340	21,000	21,660

### Cattle AUMs<sup>1</sup>



<sup>1</sup>BLM specialist estimate

Table 3

**Total AUMs (By Year and Alternative)**

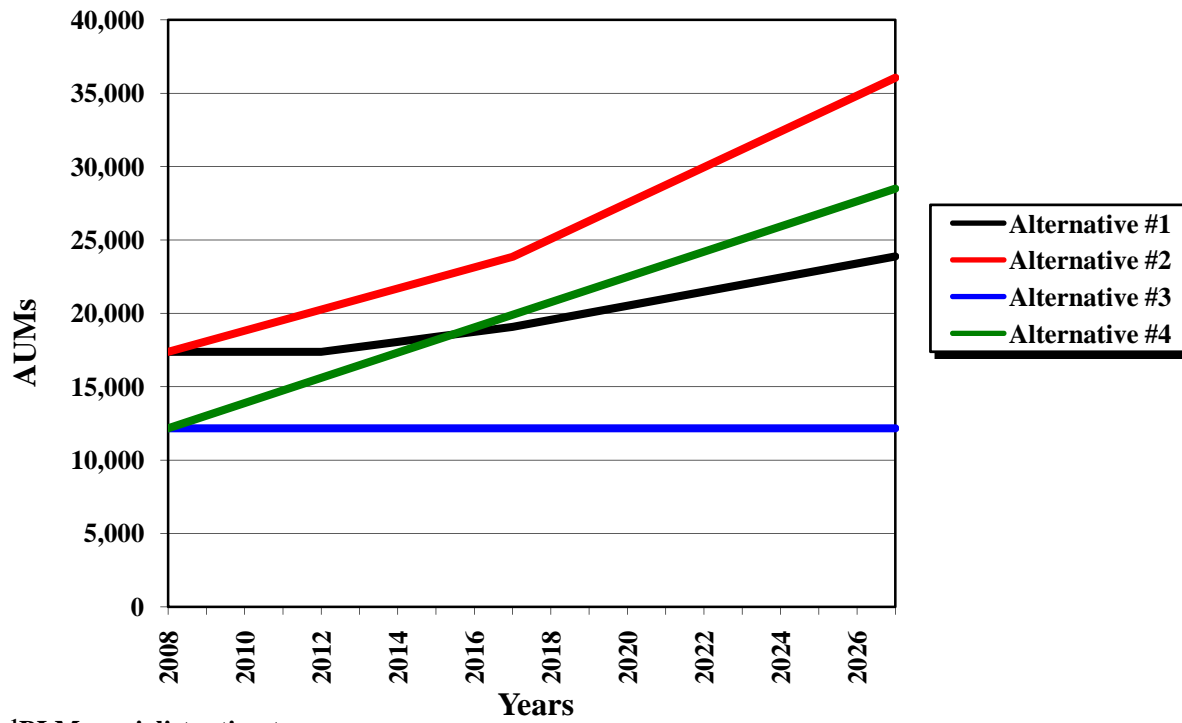
	<b>2008</b>	<b>2009</b>	<b>2010</b>	<b>2011</b>	<b>2012</b>	<b>2013</b>	<b>2014</b>	<b>2015</b>	<b>2016</b>	<b>2017</b>
<b>Alternative #1</b>	17,380	17,380	17,380	17,380	17,380	17,720	18,060	18,400	18,740	19,080
<b>Alternative #2</b>	17,380	18,100	18,820	19,540	20,260	20,980	21,700	22,420	23,140	23,860
<b>Alternative #3</b>	12,160	12,160	12,160	12,160	12,160	12,160	12,160	12,160	12,160	12,160
<b>Alternative #4</b>	12,160	13,020	13,880	14,740	15,600	16,460	17,320	18,180	19,040	19,900

Table 3 (Cont.)

**Total AUMs (Cont. By Year and Alternative)**

	<b>2018</b>	<b>2019</b>	<b>2020</b>	<b>2021</b>	<b>2022</b>	<b>2023</b>	<b>2024</b>	<b>2025</b>	<b>2026</b>	<b>2027</b>
<b>Alternative #1</b>	19,560	20,040	20,520	21,000	21,480	21,960	22,440	22,920	23,400	23,880
<b>Alternative #2</b>	25,080	26,300	27,520	28,740	29,960	31,180	32,400	33,620	34,840	36,060
<b>Alternative #3</b>	12,160	12,160	12,160	12,160	12,160	12,160	12,160	12,160	12,160	12,160
<b>Alternative #4</b>	20,760	21,620	22,480	23,340	24,200	25,060	25,920	26,780	27,640	28,500

### Total AUMs<sup>1</sup>



<sup>1</sup>BLM specialist estimate

**Recreation Section:**

Table 4

**Deer Visitor Days (By Year and Alternative)**

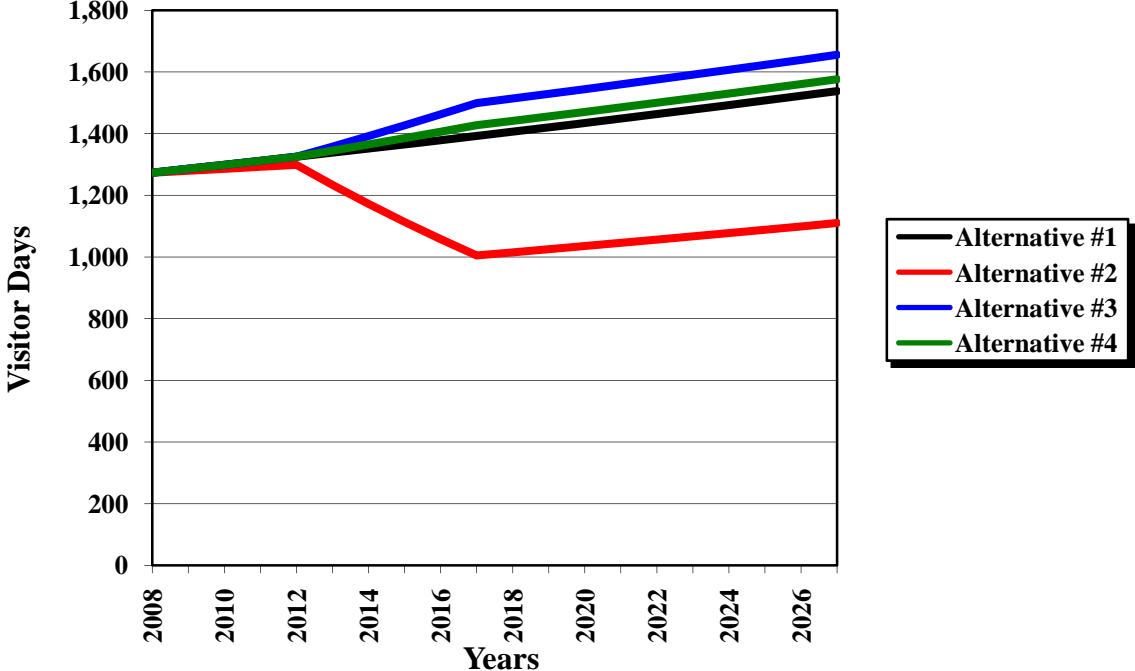
	<b>2008</b>	<b>2009</b>	<b>2010</b>	<b>2011</b>	<b>2012</b>	<b>2013</b>	<b>2014</b>	<b>2015</b>	<b>2016</b>	<b>2017</b>
<b>Alternative #1</b>	1,273	1,286	1,299	1,312	1,325	1,338	1,351	1,365	1,378	1,392
<b>Alternative #2</b>	1,273	1,279	1,286	1,292	1,299	1,234	1,172	1,113	1,058	1,005
<b>Alternative #3</b>	1,273	1,286	1,299	1,312	1,325	1,358	1,392	1,427	1,462	1,499
<b>Alternative #4</b>	1,273	1,286	1,299	1,312	1,325	1,345	1,365	1,385	1,406	1,427

Table 4 (Cont.)

**Deer Visitor Days (Cont. By Year and Alternative)**

	<b>2018</b>	<b>2019</b>	<b>2020</b>	<b>2021</b>	<b>2022</b>	<b>2023</b>	<b>2024</b>	<b>2025</b>	<b>2026</b>	<b>2027</b>
<b>Alternative #1</b>	1,406	1,420	1,434	1,449	1,463	1,478	1,493	1,508	1,523	1,538
<b>Alternative #2</b>	1,015	1,025	1,035	1,046	1,056	1,067	1,077	1,088	1,099	1,110
<b>Alternative #3</b>	1,514	1,529	1,544	1,560	1,575	1,591	1,607	1,623	1,639	1,656
<b>Alternative #4</b>	1,441	1,456	1,470	1,485	1,500	1,515	1,530	1,545	1,561	1,576

### Deer Visitor Days<sup>1</sup>



<sup>1</sup>BLM Specialist estimate



Table 5

**Antelope Visitor Days (By Year and Alternative)**

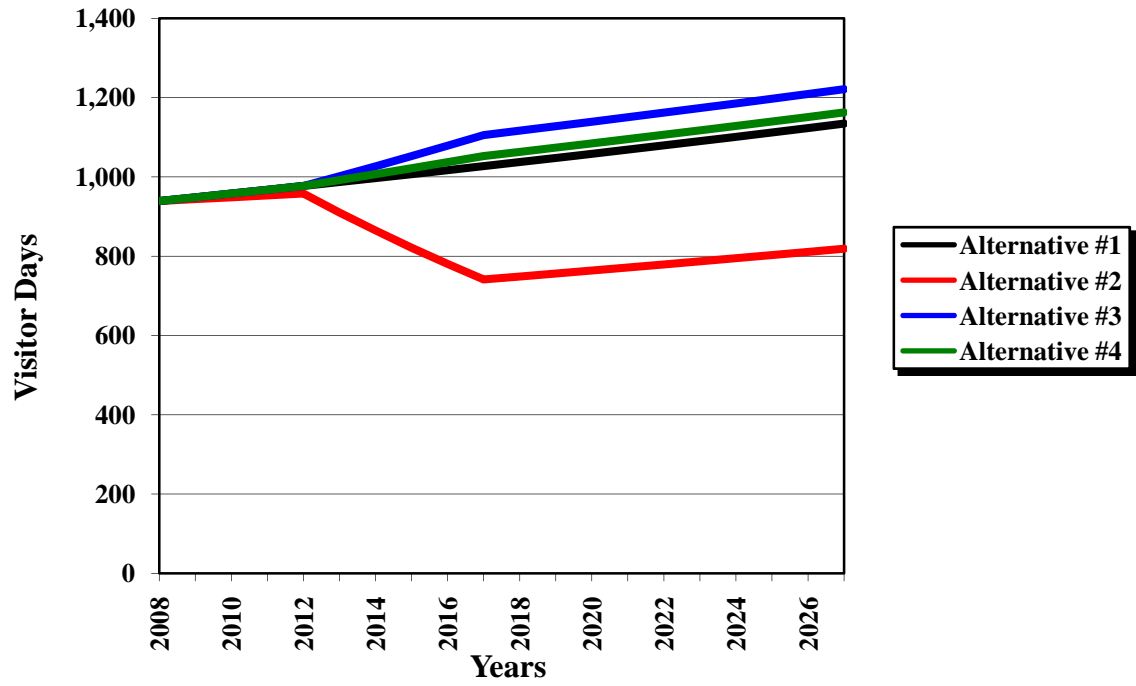
	<b>2008</b>	<b>2009</b>	<b>2010</b>	<b>2011</b>	<b>2012</b>	<b>2013</b>	<b>2014</b>	<b>2015</b>	<b>2016</b>	<b>2017</b>
<b>Alternative #1</b>	939	948	958	967	977	987	997	1,007	1,017	1,027
<b>Alternative #2</b>	939	944	948	953	958	910	865	821	780	741
<b>Alternative #3</b>	939	948	958	967	977	1,002	1,027	1,052	1,079	1,106
<b>Alternative #4</b>	939	948	958	967	977	992	1,007	1,022	1,037	1,053

Table 5 (Cont.)

**Antelope Visitor Days (Cont. By Year and Alternative)**

	<b>2018</b>	<b>2019</b>	<b>2020</b>	<b>2021</b>	<b>2022</b>	<b>2023</b>	<b>2024</b>	<b>2025</b>	<b>2026</b>	<b>2027</b>
<b>Alternative #1</b>	1,037	1,048	1,058	1,069	1,079	1,090	1,101	1,112	1,123	1,134
<b>Alternative #2</b>	749	756	764	771	779	787	795	803	811	819
<b>Alternative #3</b>	1,117	1,128	1,139	1,150	1,162	1,174	1,185	1,197	1,209	1,221
<b>Alternative #4</b>	1,063	1,074	1,085	1,095	1,106	1,117	1,129	1,140	1,151	1,163

### Antelope Visitor Days<sup>1</sup>



<sup>1</sup>BLM Specialist estimate

Table 6

**Elk Visitor Days (By Year and Alternative)**

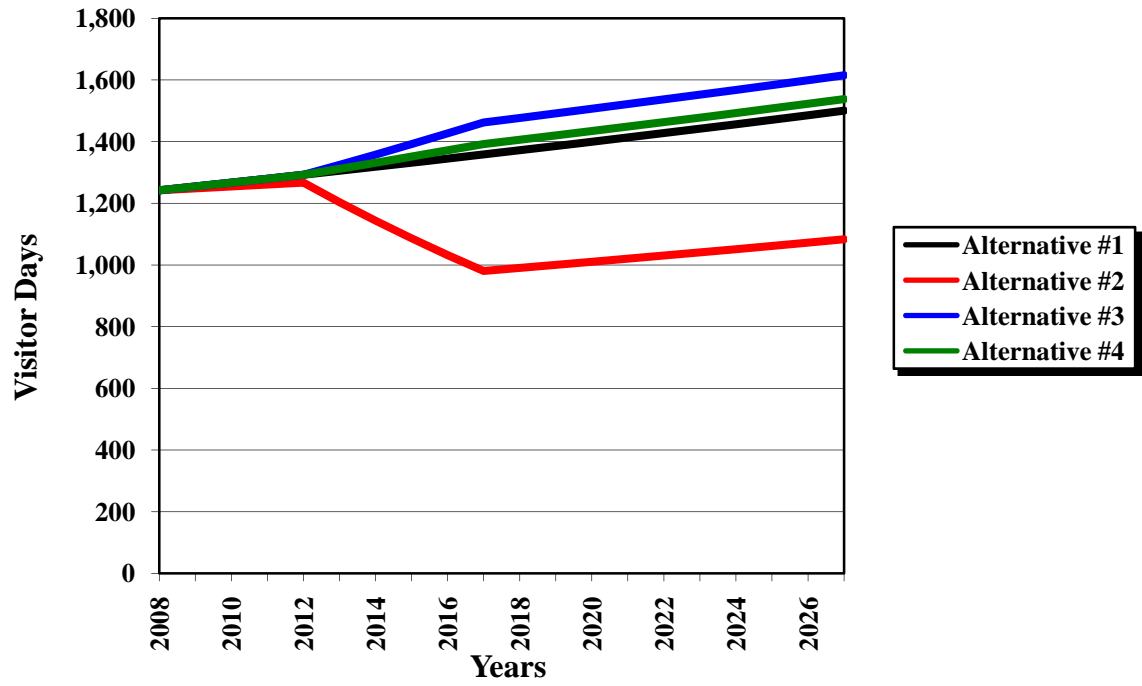
	<b>2008</b>	<b>2009</b>	<b>2010</b>	<b>2011</b>	<b>2012</b>	<b>2013</b>	<b>2014</b>	<b>2015</b>	<b>2016</b>	<b>2017</b>
<b>Alternative #1</b>	1,242	1,254	1,267	1,280	1,292	1,305	1,318	1,332	1,345	1,358
<b>Alternative #2</b>	1,242	1,248	1,254	1,261	1,267	1,204	1,143	1,086	1,032	980
<b>Alternative #3</b>	1,242	1,254	1,267	1,280	1,292	1,325	1,358	1,392	1,427	1,462
<b>Alternative #4</b>	1,242	1,254	1,267	1,280	1,292	1,312	1,331	1,351	1,372	1,392

Table 6 (Cont.)

**Elk Visitor Days (Cont. By Year and Alternative)**

	<b>2018</b>	<b>2019</b>	<b>2020</b>	<b>2021</b>	<b>2022</b>	<b>2023</b>	<b>2024</b>	<b>2025</b>	<b>2026</b>	<b>2027</b>
<b>Alternative #1</b>	1,372	1,386	1,400	1,414	1,428	1,442	1,456	1,471	1,486	1,500
<b>Alternative #2</b>	990	1,000	1,010	1,020	1,030	1,041	1,051	1,062	1,072	1,083
<b>Alternative #3</b>	1,477	1,492	1,507	1,522	1,537	1,552	1,568	1,583	1,599	1,615
<b>Alternative #4</b>	1,406	1,420	1,435	1,449	1,463	1,478	1,493	1,508	1,523	1,538

### Elk Visitor Days<sup>1</sup>



<sup>1</sup>BLM Specialist estimate

Table 7

**Upland Game & Waterfowl Visitor Days (By Year and Alternative)**

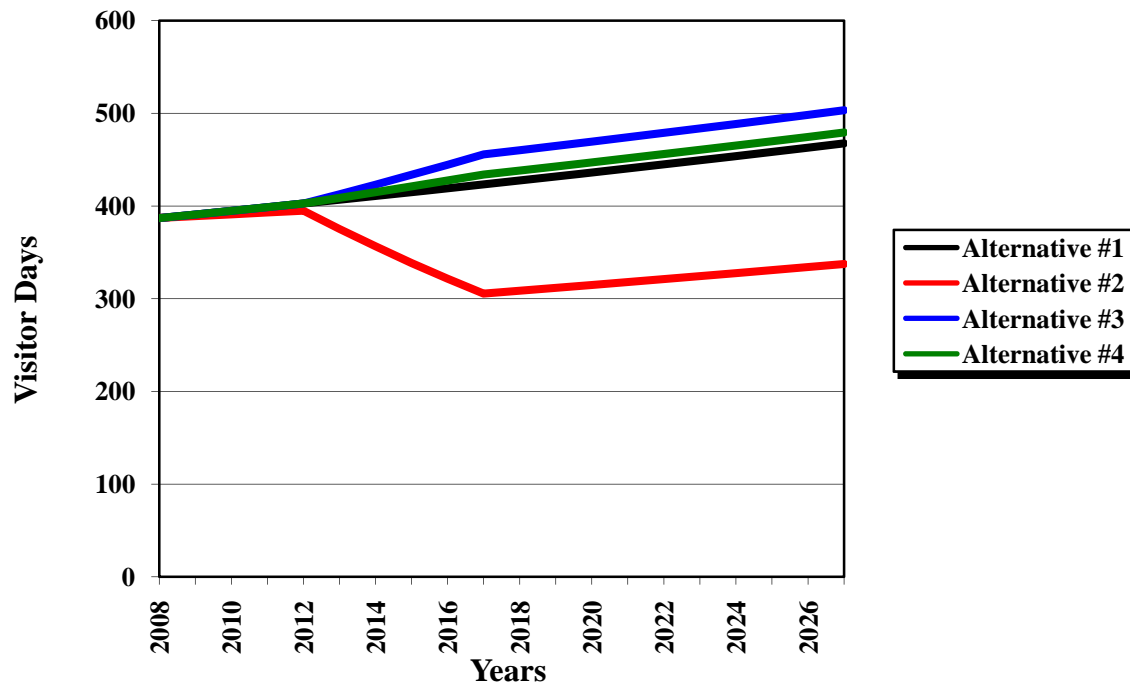
	<b>2008</b>	<b>2009</b>	<b>2010</b>	<b>2011</b>	<b>2012</b>	<b>2013</b>	<b>2014</b>	<b>2015</b>	<b>2016</b>	<b>2017</b>
<b>Alternative #1</b>	387	391	395	399	403	407	411	415	419	423
<b>Alternative #2</b>	387	389	391	393	395	375	356	338	322	305
<b>Alternative #3</b>	387	391	395	399	403	413	423	434	445	456
<b>Alternative #4</b>	387	391	395	399	403	409	415	421	427	434

Table 7 (Cont.)

**Upland Game & Waterfowl Visitor Days (Cont. By Year and Alternative)**

	<b>2018</b>	<b>2019</b>	<b>2020</b>	<b>2021</b>	<b>2022</b>	<b>2023</b>	<b>2024</b>	<b>2025</b>	<b>2026</b>	<b>2027</b>
<b>Alternative #1</b>	427	432	436	440	445	449	454	458	463	468
<b>Alternative #2</b>	309	312	315	318	321	324	328	331	334	337
<b>Alternative #3</b>	460	465	469	474	479	484	489	493	498	503
<b>Alternative #4</b>	438	443	447	451	456	461	465	470	474	479

### Upland Game & Waterfowl Visitor Days<sup>1</sup>



<sup>1</sup>BLM Specialist estimate

Table 8

**Small Game Visitor Days (By Year and Alternative)**

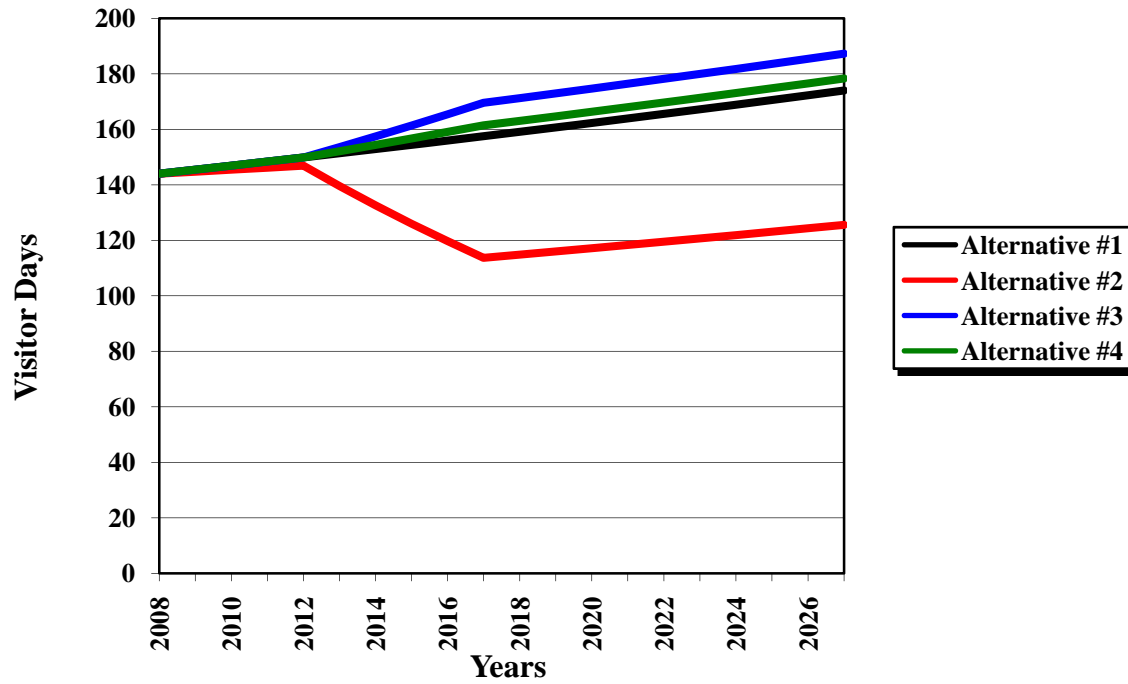
	<b>2008</b>	<b>2009</b>	<b>2010</b>	<b>2011</b>	<b>2012</b>	<b>2013</b>	<b>2014</b>	<b>2015</b>	<b>2016</b>	<b>2017</b>
<b>Alternative #1</b>	144	145	147	148	150	151	153	154	156	157
<b>Alternative #2</b>	144	145	145	146	147	140	133	126	120	114
<b>Alternative #3</b>	144	145	147	148	150	154	157	161	165	170
<b>Alternative #4</b>	144	145	147	148	150	152	154	157	159	161

Table 8 (Cont.)

**Small Game Visitor Days (Cont. By Year and Alternative)**

	<b>2018</b>	<b>2019</b>	<b>2020</b>	<b>2021</b>	<b>2022</b>	<b>2023</b>	<b>2024</b>	<b>2025</b>	<b>2026</b>	<b>2027</b>
<b>Alternative #1</b>	159	161	162	164	166	167	169	171	172	174
<b>Alternative #2</b>	115	116	117	118	119	121	122	123	124	126
<b>Alternative #3</b>	171	173	175	176	178	180	182	184	185	187
<b>Alternative #4</b>	163	165	166	168	170	171	173	175	177	178

### Small Game Visitor Days<sup>1</sup>



<sup>1</sup>BLM Specialist estimate



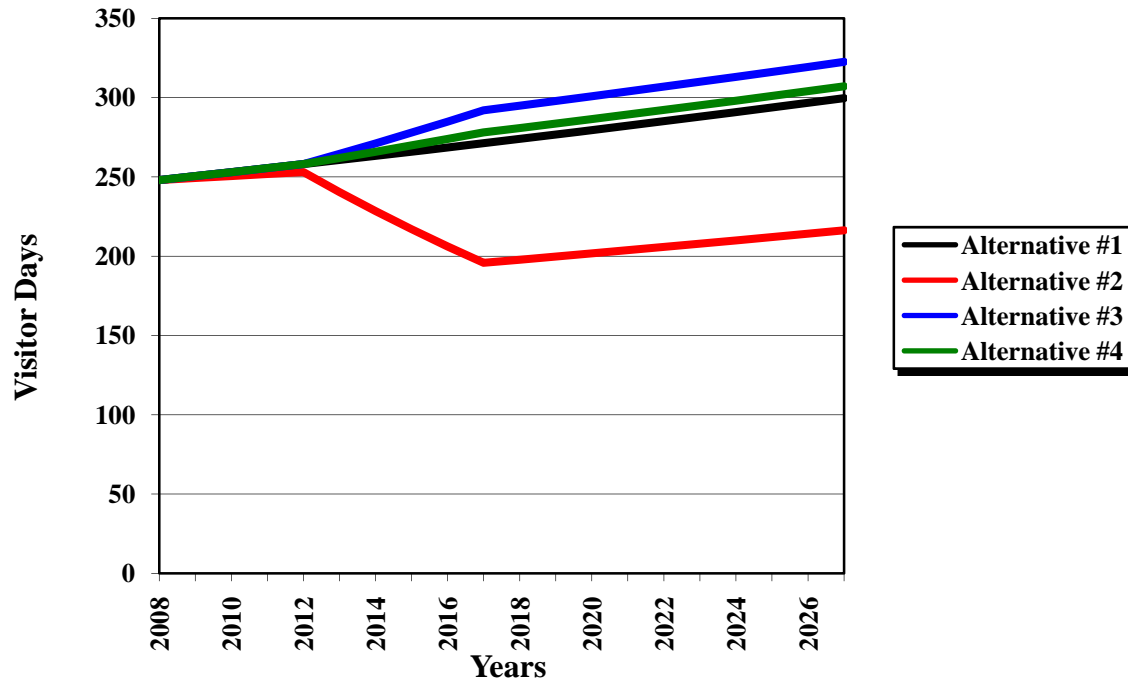
Table 9

<b>Fishing Visitor Days (By Year and Alternative)</b>	<b>2008</b>	<b>2009</b>	<b>2010</b>	<b>2011</b>	<b>2012</b>	<b>2013</b>	<b>2014</b>	<b>2015</b>	<b>2016</b>	<b>2017</b>
<b>Alternative #1</b>	248	250	253	256	258	261	263	266	269	271
<b>Alternative #2</b>	248	249	250	252	253	240	228	217	206	196
<b>Alternative #3</b>	248	250	253	256	258	265	271	278	285	292
<b>Alternative #4</b>	248	250	253	256	258	262	266	270	274	278

Table 9 (Cont.)

<b>Fishing Visitor Days (Cont. By Year and Alternative)</b>	<b>2018</b>	<b>2019</b>	<b>2020</b>	<b>2021</b>	<b>2022</b>	<b>2023</b>	<b>2024</b>	<b>2025</b>	<b>2026</b>	<b>2027</b>
<b>Alternative #1</b>	274	277	279	282	285	288	291	294	297	300
<b>Alternative #2</b>	198	200	202	204	206	208	210	212	214	216
<b>Alternative #3</b>	295	298	301	304	307	310	313	316	319	323
<b>Alternative #4</b>	281	284	286	289	292	295	298	301	304	307

### Fishing Visitor Days<sup>1</sup>



<sup>1</sup>BLM Specialist estimate

Table 10

**Camping Visitor Days (By Year and Alternative)**

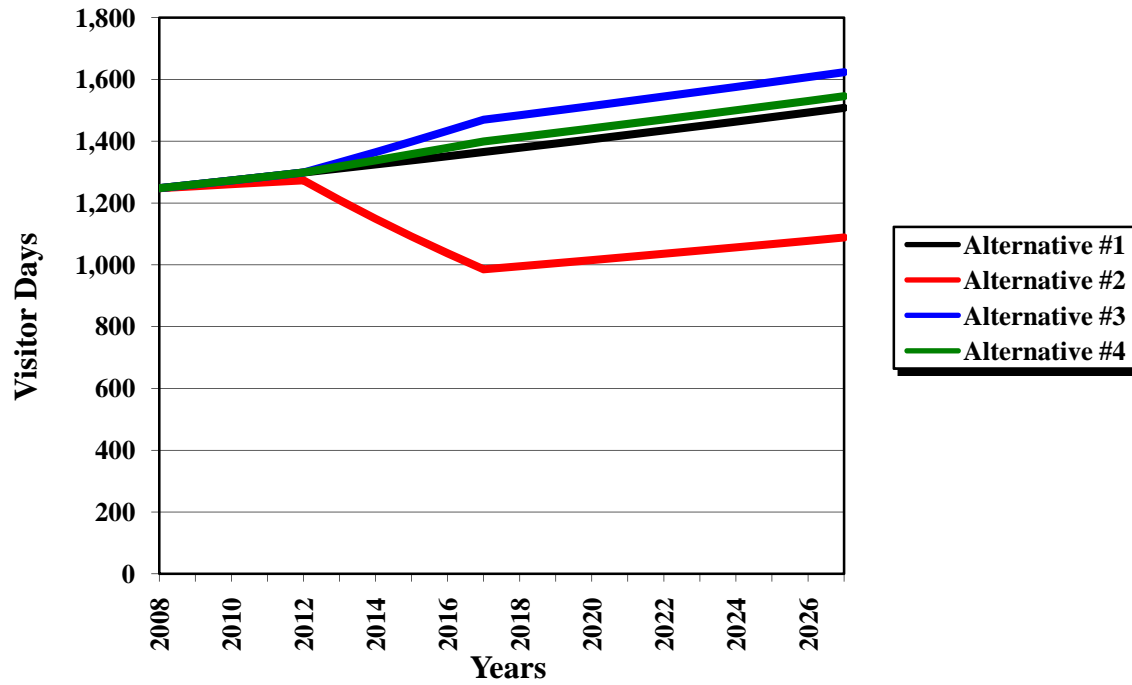
	2008	2009	2010	2011	2012	2013	2014	2015	2016	2017
<b>Alternative #1</b>	1,248	1,260	1,273	1,286	1,299	1,312	1,325	1,338	1,351	1,365
<b>Alternative #2</b>	1,248	1,254	1,261	1,267	1,273	1,209	1,149	1,092	1,037	985
<b>Alternative #3</b>	1,248	1,260	1,273	1,286	1,299	1,331	1,364	1,399	1,433	1,469
<b>Alternative #4</b>	1,248	1,260	1,273	1,286	1,299	1,318	1,338	1,358	1,378	1,399

Table 10 (Cont.)

**Camping Visitor Days (Cont. By Year and Alternative)**

	2018	2019	2020	2021	2022	2023	2024	2025	2026	2027
<b>Alternative #1</b>	1,379	1,392	1,406	1,420	1,435	1,449	1,463	1,478	1,493	1,508
<b>Alternative #2</b>	995	1,005	1,015	1,025	1,035	1,046	1,056	1,067	1,077	1,088
<b>Alternative #3</b>	1,484	1,499	1,514	1,529	1,544	1,560	1,575	1,591	1,607	1,623
<b>Alternative #4</b>	1,413	1,427	1,441	1,456	1,470	1,485	1,500	1,515	1,530	1,545

### Camping Visitor Days<sup>1</sup>



<sup>1</sup>BLM Specialist estimate

Table 11

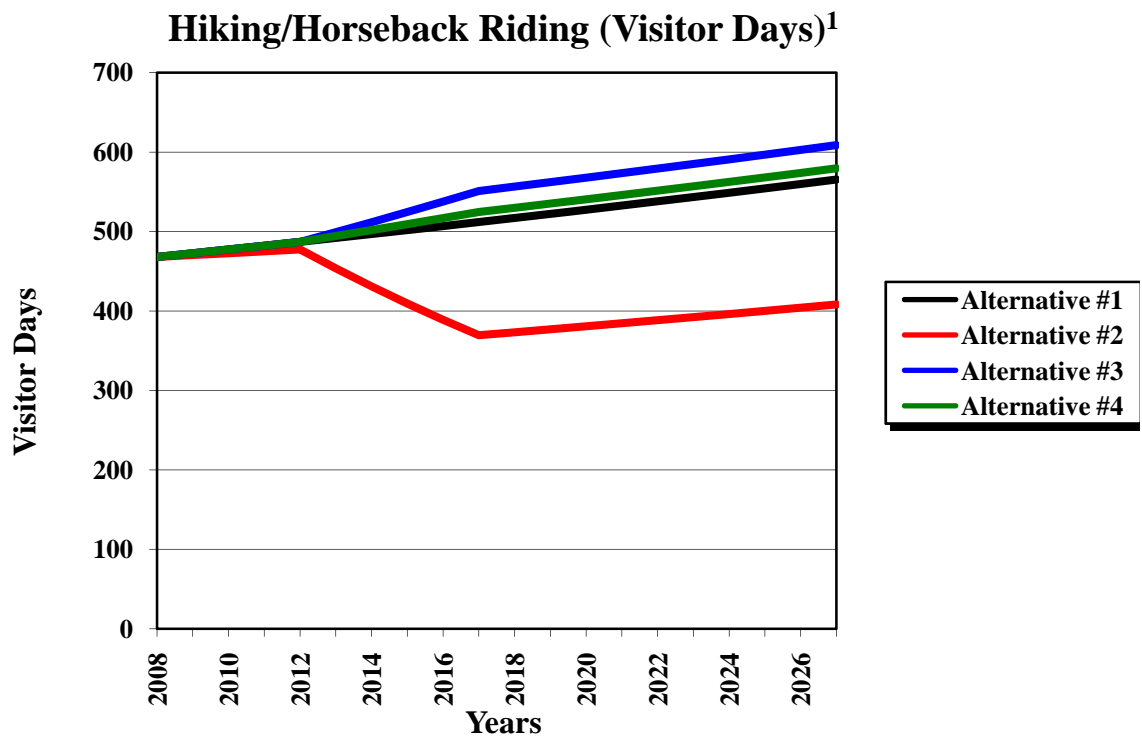
**Hiking/Horseback Riding Visitor Days (By Year and Alternative)**

	<b>2008</b>	<b>2009</b>	<b>2010</b>	<b>2011</b>	<b>2012</b>	<b>2013</b>	<b>2014</b>	<b>2015</b>	<b>2016</b>	<b>2017</b>
<b>Alternative #1</b>	468	473	477	482	487	492	497	502	507	512
<b>Alternative #2</b>	468	470	473	475	477	454	431	409	389	369
<b>Alternative #3</b>	468	473	477	482	487	499	512	524	538	551
<b>Alternative #4</b>	468	473	477	482	487	494	502	509	517	525

Table 11 (Cont.)

**Hiking/Horseback Riding Visitor Days (Cont. By Year and Alternative)**

	<b>2018</b>	<b>2019</b>	<b>2020</b>	<b>2021</b>	<b>2022</b>	<b>2023</b>	<b>2024</b>	<b>2025</b>	<b>2026</b>	<b>2027</b>
<b>Alternative #1</b>	517	522	527	533	538	543	549	554	560	565
<b>Alternative #2</b>	373	377	381	384	388	392	396	400	404	408
<b>Alternative #3</b>	557	562	568	573	579	585	591	597	603	609
<b>Alternative #4</b>	530	535	541	546	551	557	562	568	574	580



<sup>1</sup>BLM Specialist estimate

Table 12

**Biking Visitor Days (By Year and Alternative)**

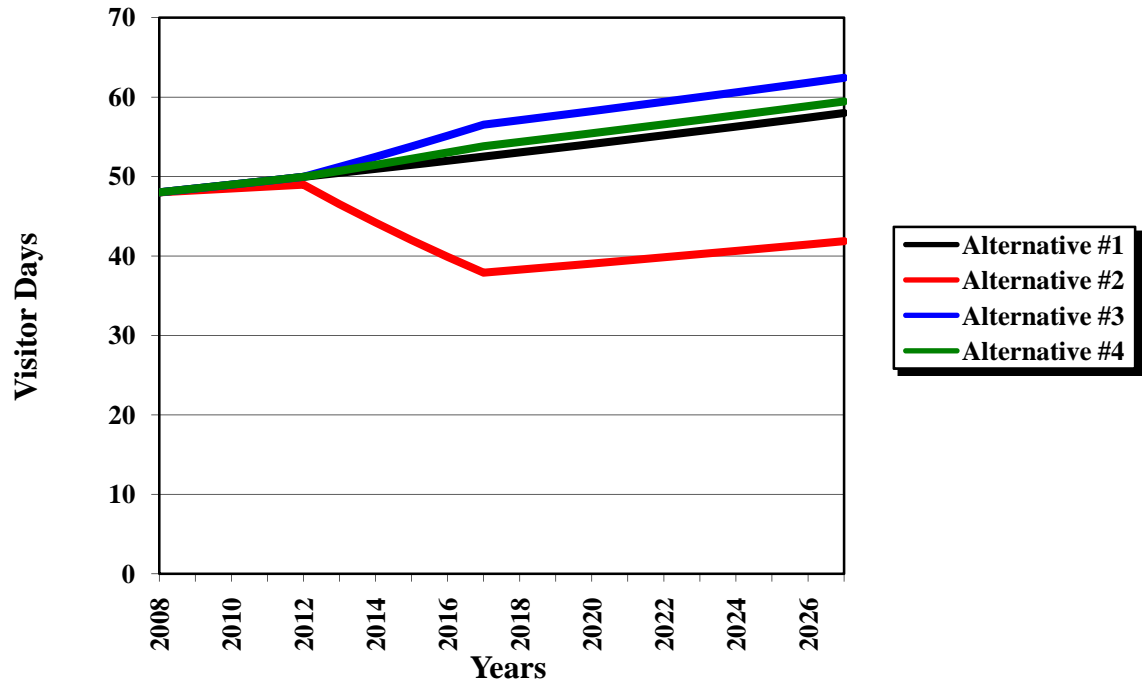
	<b>2008</b>	<b>2009</b>	<b>2010</b>	<b>2011</b>	<b>2012</b>	<b>2013</b>	<b>2014</b>	<b>2015</b>	<b>2016</b>	<b>2017</b>
<b>Alternative #1</b>	48	48	49	49	50	50	51	51	52	52
<b>Alternative #2</b>	48	48	48	49	49	47	44	42	40	38
<b>Alternative #3</b>	48	48	49	49	50	51	52	54	55	57
<b>Alternative #4</b>	48	48	49	49	50	51	51	52	53	54

Table 12 (Cont.)

**Biking Visitor Days (Cont. By Year and Alternative)**

	<b>2018</b>	<b>2019</b>	<b>2020</b>	<b>2021</b>	<b>2022</b>	<b>2023</b>	<b>2024</b>	<b>2025</b>	<b>2026</b>	<b>2027</b>
<b>Alternative #1</b>	53	54	54	55	55	56	56	57	57	58
<b>Alternative #2</b>	38	39	39	39	40	40	41	41	41	42
<b>Alternative #3</b>	57	58	58	59	59	60	61	61	62	62
<b>Alternative #4</b>	54	55	55	56	57	57	58	58	59	59

### Biking (Visitor Days)<sup>1</sup>



<sup>1</sup>BLM Specialist estimate



Table 13

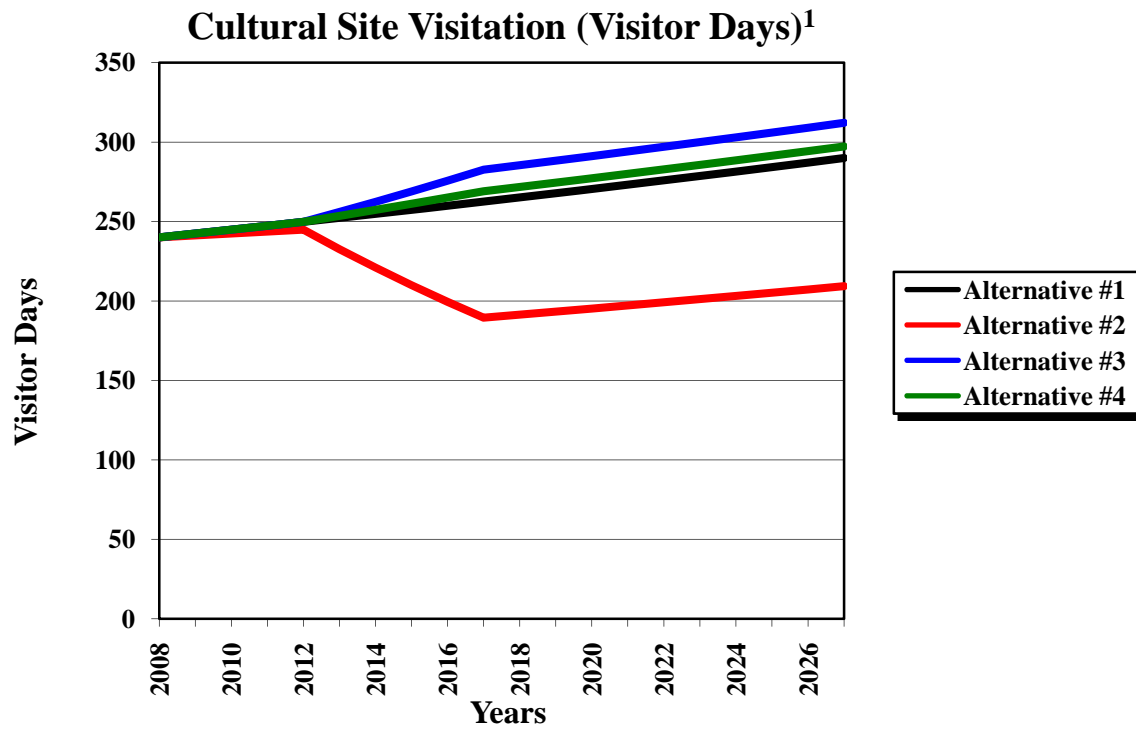
**Cultural Site Visitor Days (By Year and Alternative)**

	<b>2008</b>	<b>2009</b>	<b>2010</b>	<b>2011</b>	<b>2012</b>	<b>2013</b>	<b>2014</b>	<b>2015</b>	<b>2016</b>	<b>2017</b>
<b>Alternative #1</b>	240	242	245	247	250	252	255	257	260	262
<b>Alternative #2</b>	240	241	242	244	245	233	221	210	199	189
<b>Alternative #3</b>	240	242	245	247	250	256	262	269	276	283
<b>Alternative #4</b>	240	242	245	247	250	253	257	261	265	269

Table 13 (Cont.)

**Cultural Site Visitor Days (Cont. By Year and Alternative)**

	<b>2018</b>	<b>2019</b>	<b>2020</b>	<b>2021</b>	<b>2022</b>	<b>2023</b>	<b>2024</b>	<b>2025</b>	<b>2026</b>	<b>2027</b>
<b>Alternative #1</b>	265	268	270	273	276	279	281	284	287	290
<b>Alternative #2</b>	191	193	195	197	199	201	203	205	207	209
<b>Alternative #3</b>	285	288	291	294	297	300	303	306	309	312
<b>Alternative #4</b>	272	274	277	280	283	286	288	291	294	297



<sup>1</sup>BLM Specialist estimate

Table 14

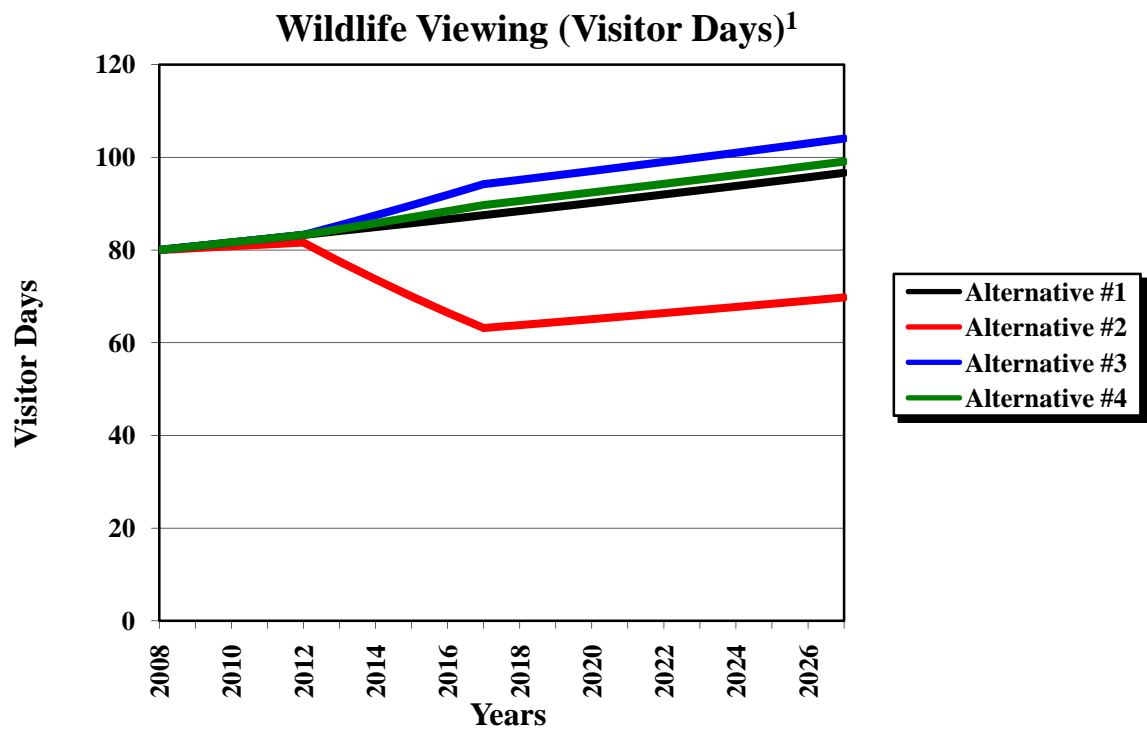
**Wildlife Viewing Visitor Days (By Year and Alternative)**

	<b>2008</b>	<b>2009</b>	<b>2010</b>	<b>2011</b>	<b>2012</b>	<b>2013</b>	<b>2014</b>	<b>2015</b>	<b>2016</b>	<b>2017</b>
<b>Alternative #1</b>	80	81	82	82	83	84	85	86	87	87
<b>Alternative #2</b>	80	80	81	81	82	78	74	70	66	63
<b>Alternative #3</b>	80	81	82	82	83	85	87	90	92	94
<b>Alternative #4</b>	80	81	82	82	83	84	86	87	88	90

Table 14 (Cont.)

**Wildlife Viewing Visitor Days (Cont. By Year and Alternative)**

	<b>2018</b>	<b>2019</b>	<b>2020</b>	<b>2021</b>	<b>2022</b>	<b>2023</b>	<b>2024</b>	<b>2025</b>	<b>2026</b>	<b>2027</b>
<b>Alternative #1</b>	88	89	90	91	92	93	94	95	96	97
<b>Alternative #2</b>	64	64	65	66	66	67	68	68	69	70
<b>Alternative #3</b>	95	96	97	98	99	100	101	102	103	104
<b>Alternative #4</b>	91	91	92	93	94	95	96	97	98	99



<sup>1</sup>BLM Specialist estimate

Table 15

**Wild horse Viewing Visitor Days (By Year and Alternative)**

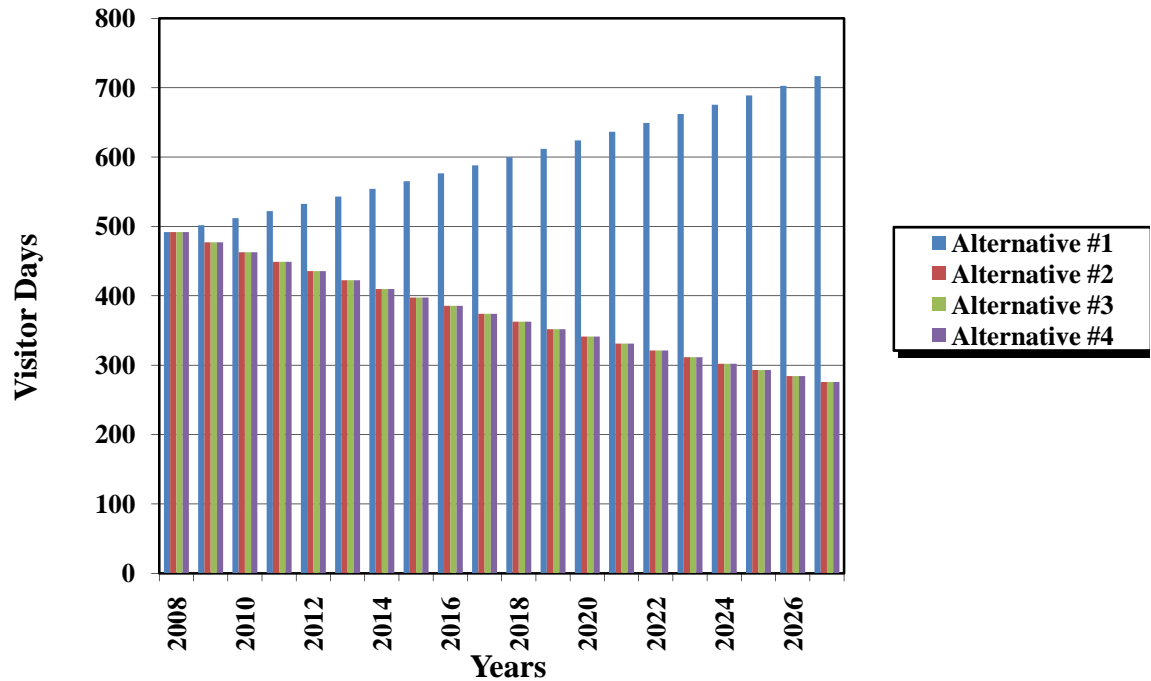
	<b>2008</b>	<b>2009</b>	<b>2010</b>	<b>2011</b>	<b>2012</b>	<b>2013</b>	<b>2014</b>	<b>2015</b>	<b>2016</b>	<b>2017</b>
<b>Alternative #1</b>	492	502	512	522	533	543	554	565	576	588
<b>Alternative #2</b>	492	477	463	449	436	422	410	398	386	374
<b>Alternative #3</b>	492	477	463	449	436	422	410	398	386	374
<b>Alternative #4</b>	492	477	463	449	436	422	410	398	386	374

Table 15 (Cont.)

**Wild horse Viewing Visitor Days (Cont. By Year and Alternative)**

	<b>2018</b>	<b>2019</b>	<b>2020</b>	<b>2021</b>	<b>2022</b>	<b>2023</b>	<b>2024</b>	<b>2025</b>	<b>2026</b>	<b>2027</b>
<b>Alternative #1</b>	600	612	624	636	649	662	675	689	703	717
<b>Alternative #2</b>	363	352	341	331	321	312	302	293	284	276
<b>Alternative #3</b>	363	352	341	331	321	312	302	293	284	276
<b>Alternative #4</b>	363	352	341	331	321	312	302	293	284	276

### Wild Horse Viewing (Visitor Days)<sup>1</sup>



<sup>1</sup>BLM Specialist estimate

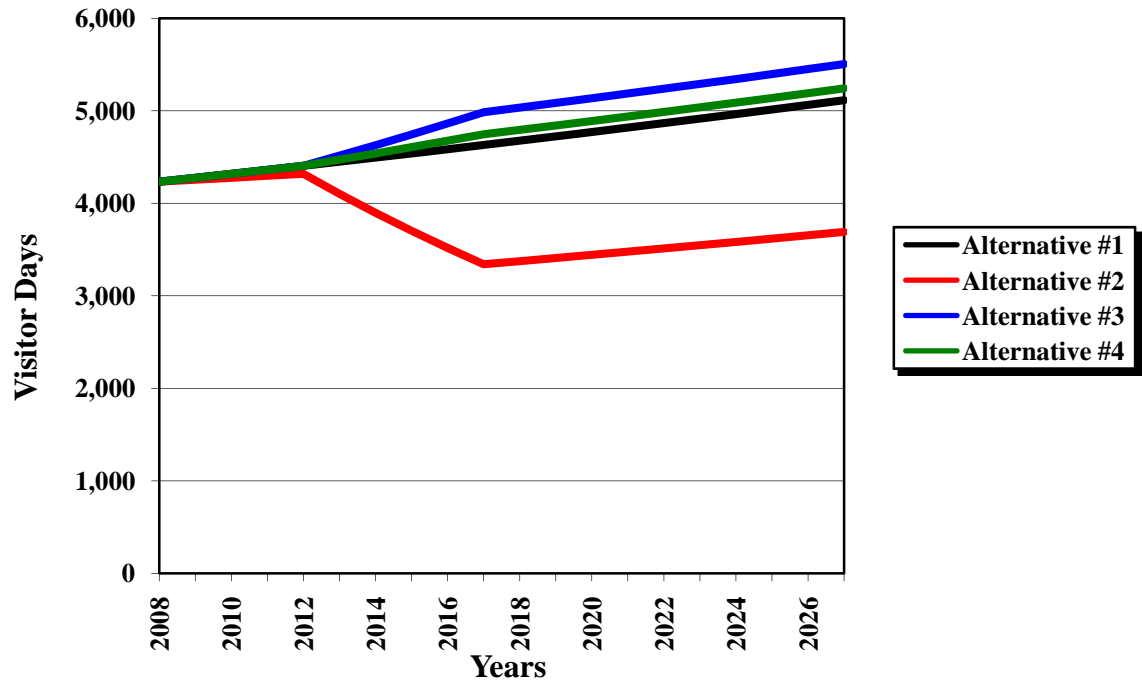
Table 16

<b>Total Consumptive Visitor Days (By Year and Alternative)</b>										
	<b>2008</b>	<b>2009</b>	<b>2010</b>	<b>2011</b>	<b>2012</b>	<b>2013</b>	<b>2014</b>	<b>2015</b>	<b>2016</b>	<b>2017</b>
<b>Alternative #1</b>	4,233	4,275	4,318	4,361	4,405	4,449	4,493	4,538	4,584	4,630
<b>Alternative #2</b>	4,233	4,254	4,275	4,297	4,318	4,102	3,897	3,702	3,517	3,341
<b>Alternative #3</b>	4,233	4,275	4,318	4,361	4,405	4,515	4,628	4,744	4,862	4,984
<b>Alternative #4</b>	4,233	4,275	4,318	4,361	4,405	4,471	4,538	4,606	4,675	4,745

Table 16 (Cont.)

<b>Total Consumptive Visitor Days (Cont. By Year and Alternative)</b>										
	<b>2018</b>	<b>2019</b>	<b>2020</b>	<b>2021</b>	<b>2022</b>	<b>2023</b>	<b>2024</b>	<b>2025</b>	<b>2026</b>	<b>2027</b>
<b>Alternative #1</b>	4,676	4,723	4,770	4,818	4,866	4,914	4,964	5,013	5,063	5,114
<b>Alternative #2</b>	3,375	3,409	3,443	3,477	3,512	3,547	3,582	3,618	3,654	3,691
<b>Alternative #3</b>	5,034	5,084	5,135	5,186	5,238	5,290	5,343	5,397	5,451	5,505
<b>Alternative #4</b>	4,793	4,841	4,889	4,938	4,987	5,037	5,088	5,138	5,190	5,242

### Total Consumptive Visitor Days<sup>1</sup>



<sup>1</sup>BLM Specialist estimate



Table 17

**Total Nonconsumptive Visitor Days (By Year and Alternative)**

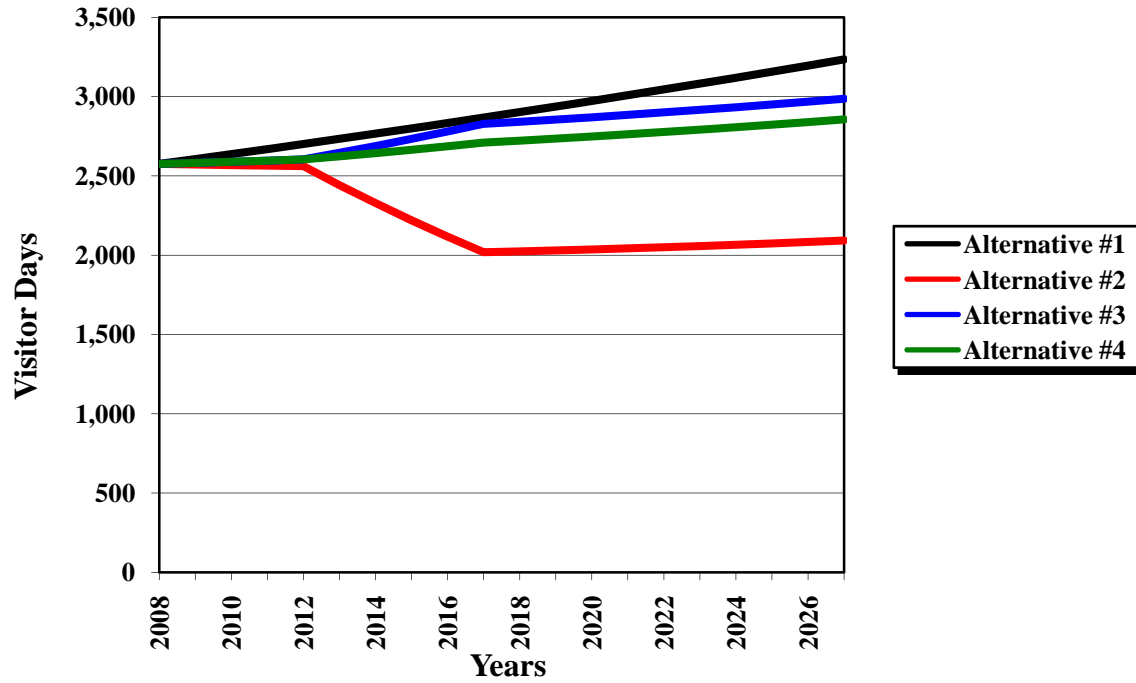
	2008	2009	2010	2011	2012	2013	2014	2015	2016	2017
<b>Alternative #1</b>	2,576	2,607	2,638	2,669	2,701	2,734	2,766	2,799	2,833	2,867
<b>Alternative #2</b>	2,576	2,572	2,568	2,564	2,562	2,442	2,329	2,220	2,117	2,019
<b>Alternative #3</b>	2,576	2,582	2,589	2,596	2,604	2,645	2,688	2,733	2,779	2,828
<b>Alternative #4</b>	2,576	2,582	2,589	2,596	2,604	2,624	2,644	2,665	2,687	2,710

Table 17 (Cont.)

**Total Nonconsumptive Visitor Days (Cont. By Year and Alternative)**

	2018	2019	2020	2021	2022	2023	2024	2025	2026	2027
<b>Alternative #1</b>	2,902	2,937	2,972	3,008	3,045	3,082	3,119	3,157	3,195	3,234
<b>Alternative #2</b>	2,024	2,030	2,036	2,043	2,050	2,058	2,066	2,075	2,084	2,093
<b>Alternative #3</b>	2,841	2,855	2,869	2,884	2,900	2,916	2,933	2,950	2,968	2,986
<b>Alternative #4</b>	2,722	2,735	2,748	2,762	2,777	2,792	2,807	2,823	2,839	2,856

### Total Nonconsumptive Visitor Days<sup>1</sup>



<sup>1</sup>BLM Specialist estimate

Table 18

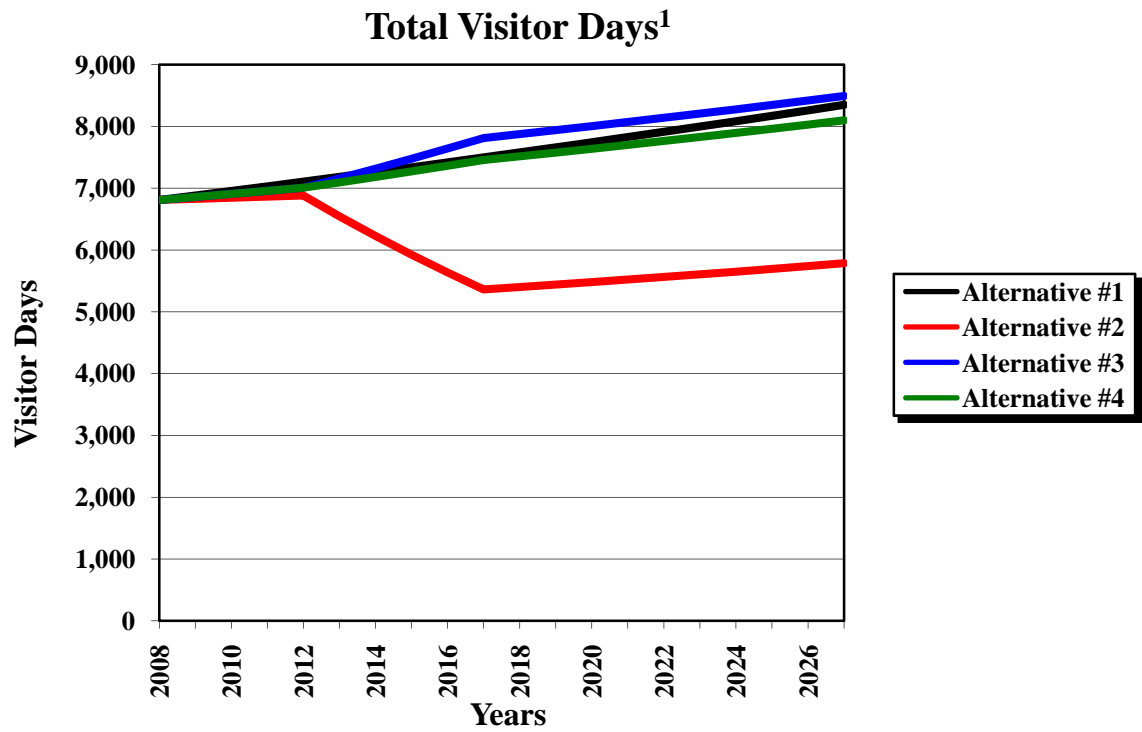
**Total Visitor Days (By Year and Alternative)**

	<b>2008</b>	<b>2009</b>	<b>2010</b>	<b>2011</b>	<b>2012</b>	<b>2013</b>	<b>2014</b>	<b>2015</b>	<b>2016</b>	<b>2017</b>
<b>Alternative #1</b>	6,809	6,882	6,956	7,031	7,106	7,182	7,260	7,338	7,417	7,497
<b>Alternative #2</b>	6,809	6,826	6,843	6,861	6,880	6,545	6,226	5,923	5,635	5,361
<b>Alternative #3</b>	6,809	6,857	6,907	6,957	7,009	7,160	7,316	7,476	7,642	7,811
<b>Alternative #4</b>	6,809	6,857	6,907	6,957	7,009	7,095	7,182	7,271	7,362	7,456

Table 18 (Cont.)

**Total Visitor Days (Cont. By Year and Alternative)**

	<b>2018</b>	<b>2019</b>	<b>2020</b>	<b>2021</b>	<b>2022</b>	<b>2023</b>	<b>2024</b>	<b>2025</b>	<b>2026</b>	<b>2027</b>
<b>Alternative #1</b>	7,578	7,659	7,742	7,826	7,910	7,996	8,083	8,170	8,259	8,348
<b>Alternative #2</b>	5,399	5,439	5,479	5,520	5,562	5,605	5,648	5,693	5,738	5,784
<b>Alternative #3</b>	7,874	7,939	8,004	8,070	8,138	8,206	8,276	8,347	8,418	8,491
<b>Alternative #4</b>	7,515	7,576	7,637	7,700	7,764	7,829	7,895	7,961	8,029	8,098



<sup>1</sup>BLM Specialist estimate

**Hydrology Section:**

Table 19

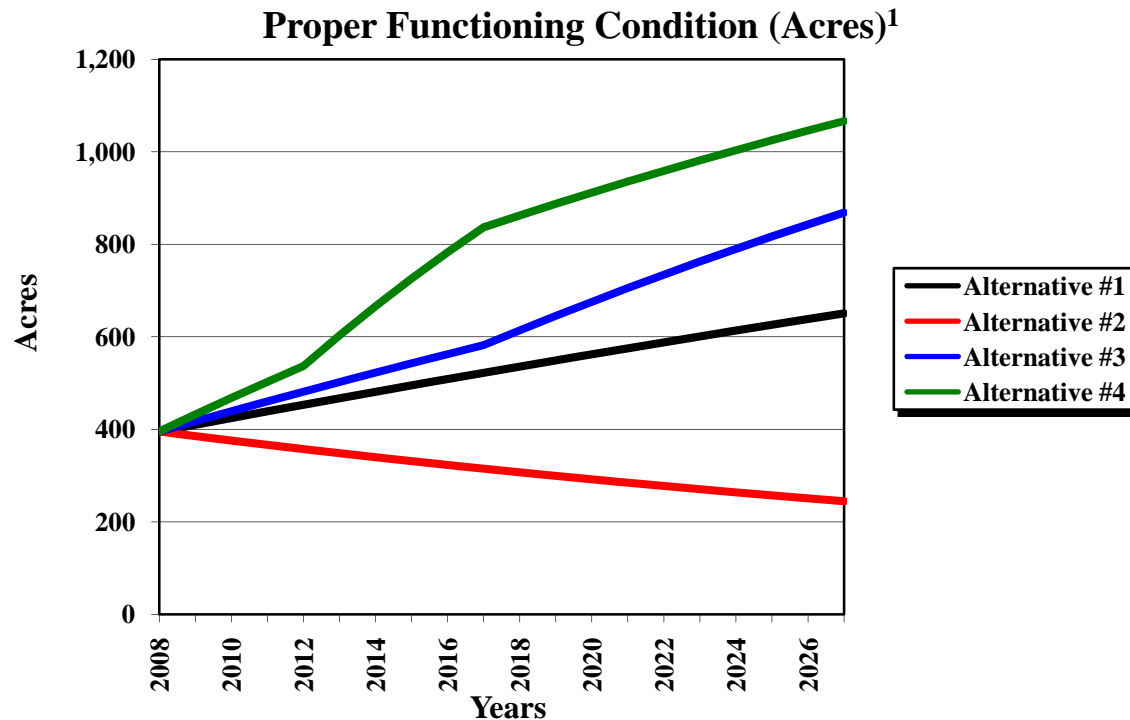
**Proper Functioning Condition-acres (By Year and Alternative)**

	<b>2008</b>	<b>2009</b>	<b>2010</b>	<b>2011</b>	<b>2012</b>	<b>2013</b>	<b>2014</b>	<b>2015</b>	<b>2016</b>	<b>2017</b>
<b>Alternative #1</b>	395	410	425	439	453	467	481	495	509	522
<b>Alternative #2</b>	395	385	376	366	357	348	340	331	323	315
<b>Alternative #3</b>	395	417	439	460	481	502	523	543	563	582
<b>Alternative #4</b>	395	432	468	503	537	603	666	726	783	837

Table 19 (Cont.)

**Proper Functioning Condition-acres (Cont. By Year and Alternative)**

	<b>2018</b>	<b>2019</b>	<b>2020</b>	<b>2021</b>	<b>2022</b>	<b>2023</b>	<b>2024</b>	<b>2025</b>	<b>2026</b>	<b>2027</b>
<b>Alternative #1</b>	536	549	562	575	588	601	613	626	638	650
<b>Alternative #2</b>	307	299	292	284	277	270	264	257	251	244
<b>Alternative #3</b>	614	645	676	705	734	763	790	817	843	869
<b>Alternative #4</b>	862	887	912	936	959	981	1,003	1,025	1,046	1,066



<sup>1</sup>BLM Specialist estimate

The above graph reflects the expected impacts to the riparian/wetland acreage of the allotment. A Proper Functioning Condition (PFC) Inventory is the source of data for inventoried riparian habitat within the allotment. At present there are almost 400 acres of properly functioning riparian/wetland acres in the GMCA. This acreage is represented by the point of origin in the graph in year 2008 for all four alternatives. In addition to these 400 acres, there are nearly 1,468 acres classified as Functional-at-Risk and about 230 acres in the Non-Functional category.

Alternatives One, Three, and Four are variations of herded grazing systems where animal control will be exercised to limit livestock grazing, and resulting impacts, to riparian zones. That is why all of these alternatives show varying upward expected trends in the long-term. Alternative Four has the most successful PFC projection due to the rest rotation grazing system, coupled with active herding. While Alternative Three projects lower overall utilization than Alternative Four, it does not include a rest rotation grazing system, so it is not expected to have as beneficial an effect on PFC. Alternative One has a higher utilization than Alternatives Three or Four but some of the impacts of the higher utilization are offset by the active herding required under Alternative One.

Alternative Two proposes a deferred grazing system with no herding. Under Alternative Two, livestock would be moved between several pastures throughout the grazing season, with no double grazing intended. Presently unfenced range would be fenced into allotment and pasture subdivisions. Livestock would be now forced, because of new fences, to use riparian areas that are presently ungrazed or lightly used. No initial rest periods are planned for the riparian areas outside of the existing and planned riparian pastures, and the time on these riparian areas will generally run from 30 to 60 days, depending on size of the pasture and number of livestock. Improvement of the riparian zones under this prescription is not expected to occur and there is a high likelihood of deterioration of riparian areas that are presently in PFC.

Table 20

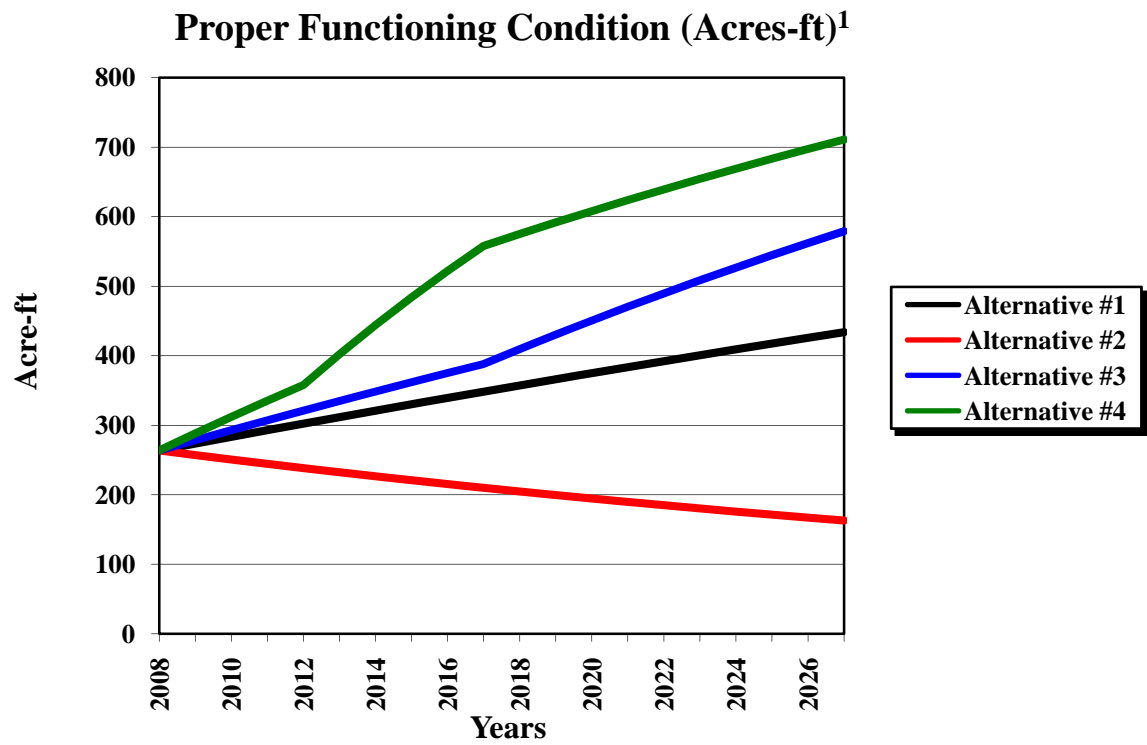
**Proper Functioning Condition-acres-ft. (By Year and Alternative)**

	2008	2009	2010	2011	2012	2013	2014	2015	2016	2017
<b>Alternative #1</b>	264	273	283	293	302	312	321	330	339	348
<b>Alternative #2</b>	264	257	251	244	238	232	226	221	215	210
<b>Alternative #3</b>	264	278	293	307	321	335	348	362	375	388
<b>Alternative #4</b>	264	288	312	335	358	402	444	484	522	558

Table 20 (Cont.)

**Proper Functioning Condition-acres-ft. (Cont. By Year and Alternative)**

	2018	2019	2020	2021	2022	2023	2024	2025	2026	2027
<b>Alternative #1</b>	357	366	375	383	392	400	409	417	425	434
<b>Alternative #2</b>	205	200	195	190	185	180	176	171	167	163
<b>Alternative #3</b>	409	430	450	470	490	508	527	545	562	579
<b>Alternative #4</b>	575	592	608	624	639	654	669	683	697	711



<sup>1</sup>BLM Specialist estimate