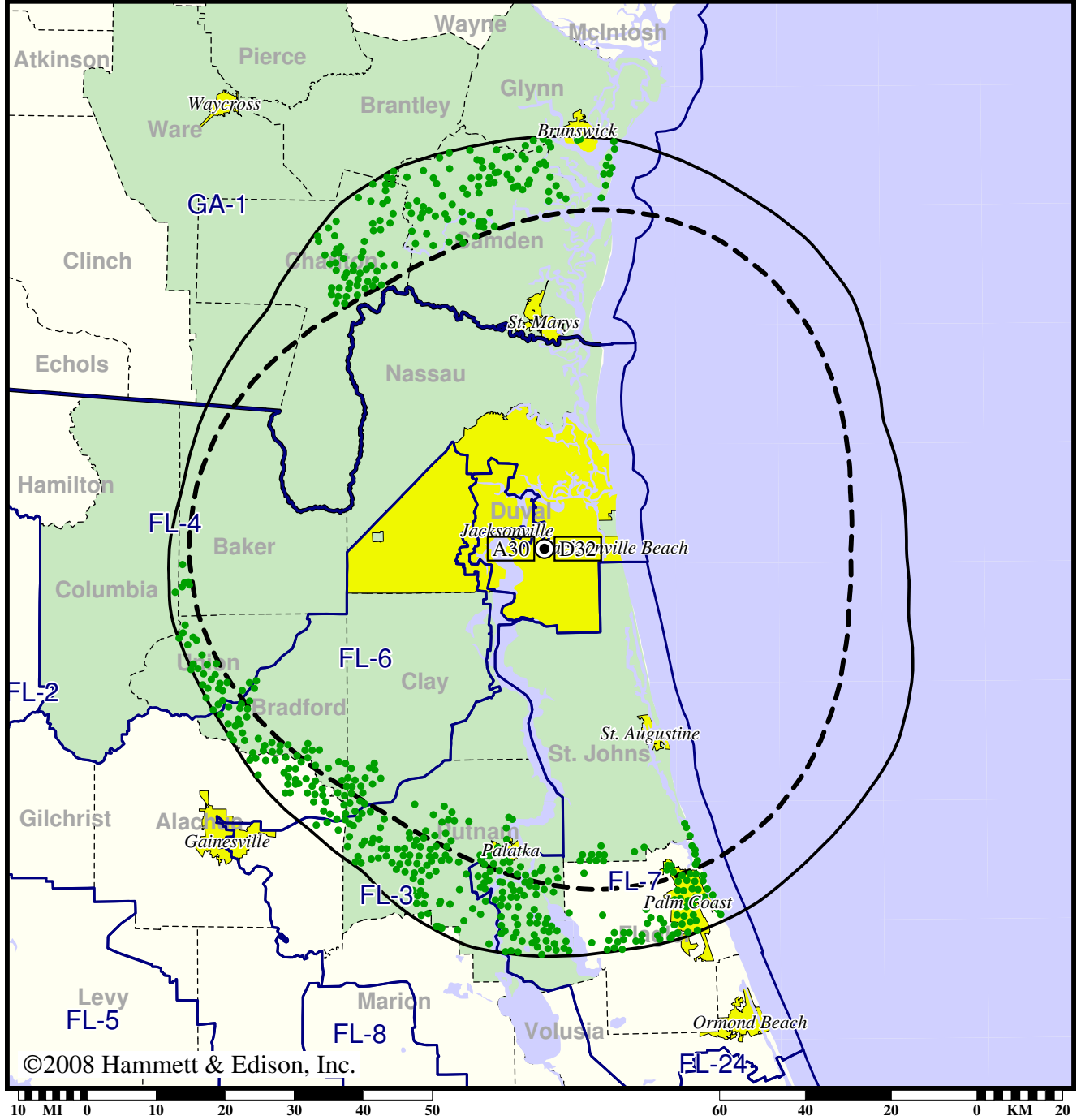


TV Station WAWS • Analog Channel 30, DTV Channel 32 • Jacksonville, FL

Expected Change In Coverage: Licensed Operation

Licensed (solid): 1000 kW ERP at 291 m HAAT, Network: Fox  
vs. Analog (dashed): 4000 kW ERP at 307 m HAAT, Network: Fox

Market: Jacksonville, FL



©2008 Hammett & Edison, Inc.

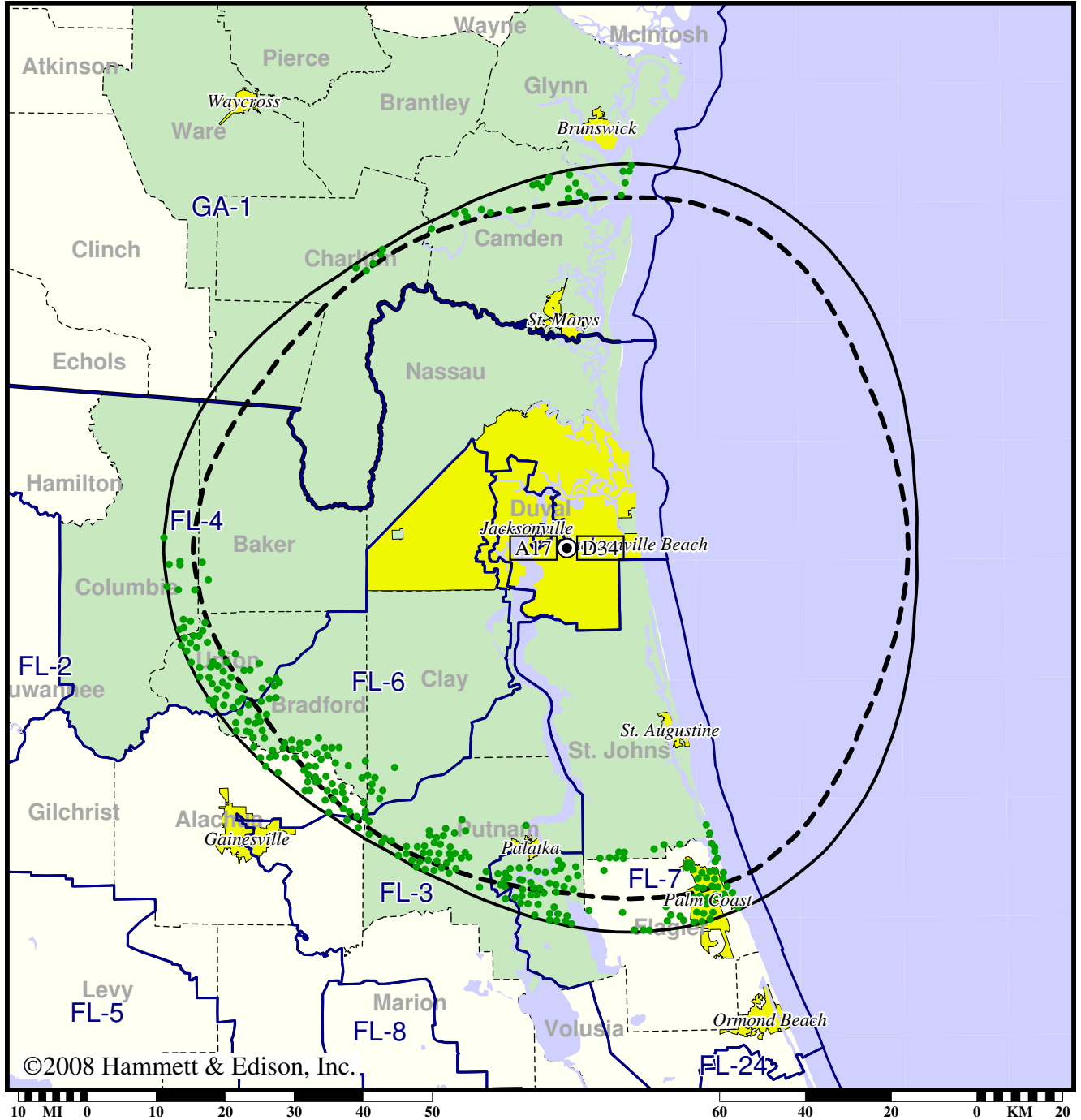
- Coverage gained after DTV transition
- (no symbol) No change in coverage

TV Station WCWJ • Analog Channel 17, DTV Channel 34 • Jacksonville, FL

Expected Change In Coverage: Licensed Operation

Licensed (solid): 863 kW ERP at 282 m HAAT  
vs. Analog (dashed): 4680 kW ERP at 304 m HAAT

Market: Jacksonville, FL



©2008 Hammett & Edison, Inc.

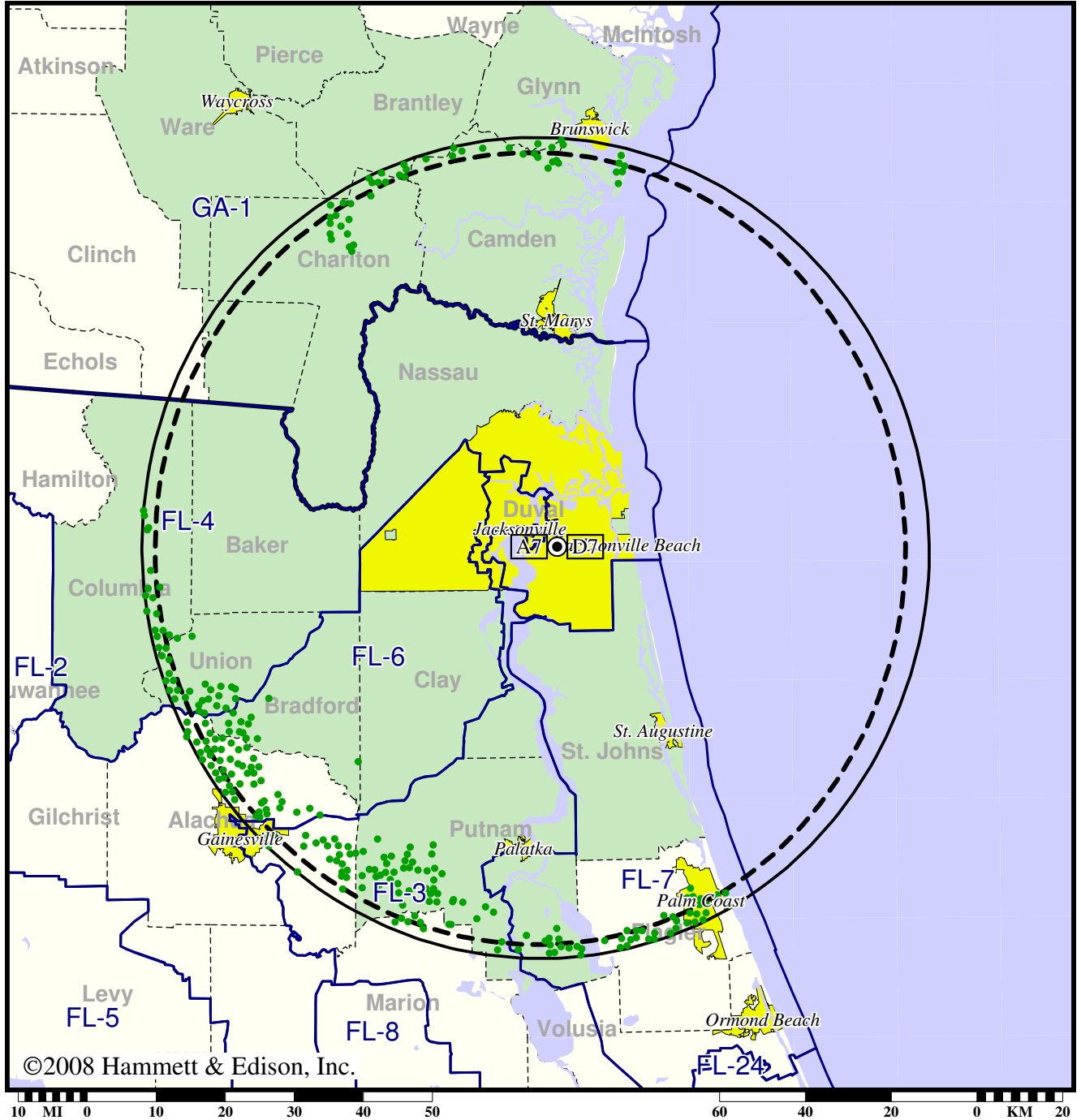
- Coverage gained after DTV transition
- (no symbol) No change in coverage

TV Station WJCT • Analog Channel 7, DTV Channel 7 • Jacksonville, FL

Expected Change In Coverage: Granted Construction Permit

CP (solid): 18.0 kW ERP at 302 m HAAT, Network: PBS  
vs. Analog (dashed): 270 kW ERP at 302 m HAAT, Network: PBS

Market: Jacksonville, FL



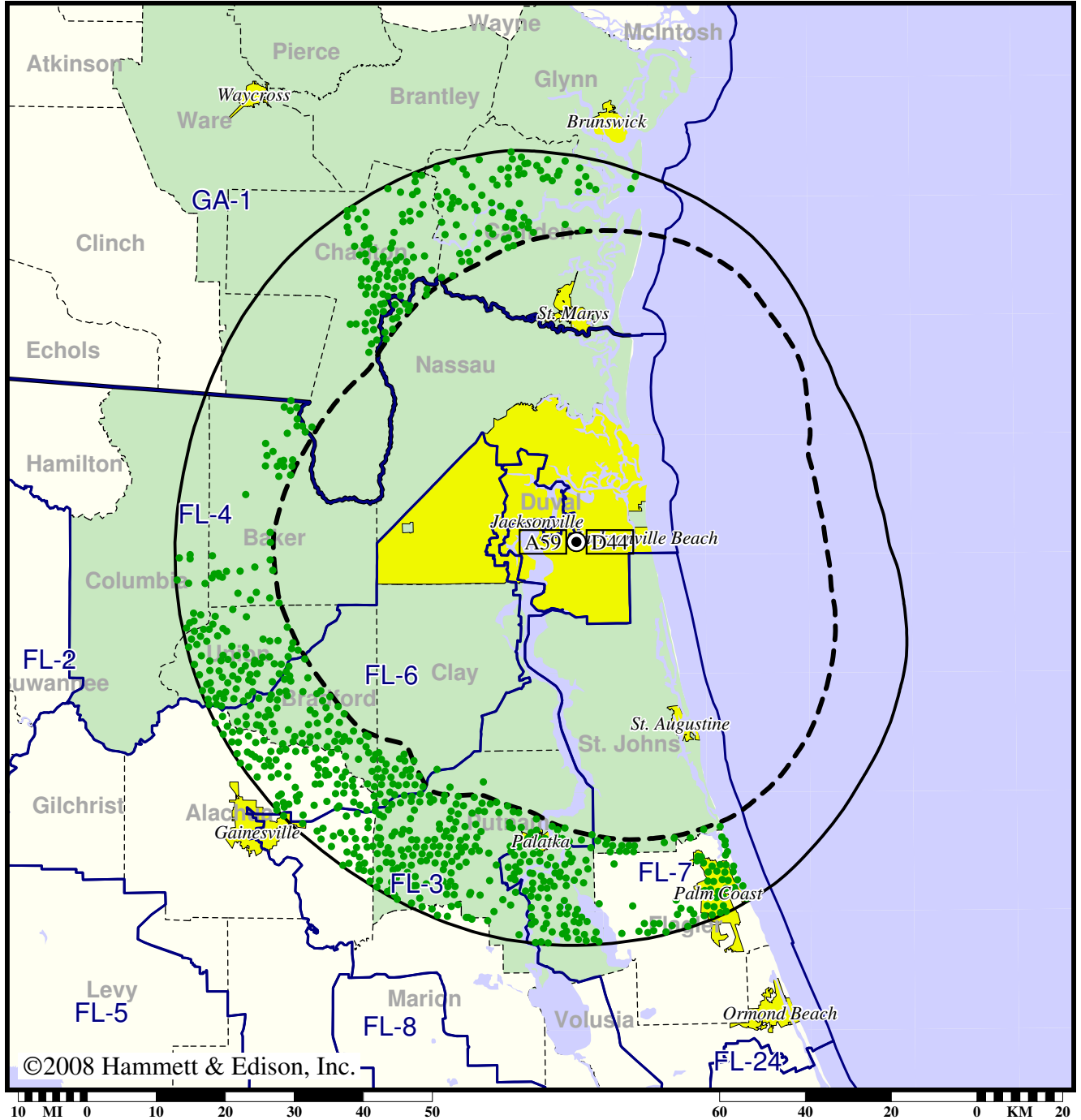
- Coverage gained after DTV transition
- (no symbol) No change in coverage

Station WJEB-TV • Analog Channel 59, DTV Channel 44 • Jacksonville, FL

Expected Change In Coverage: Granted Construction Permit

CP (solid): 1000 kW ERP at 288 m HAAT  
vs. Analog (dashed): 3310 kW ERP at 289 m HAAT

Market: Jacksonville, FL



©2008 Hammett & Edison, Inc.

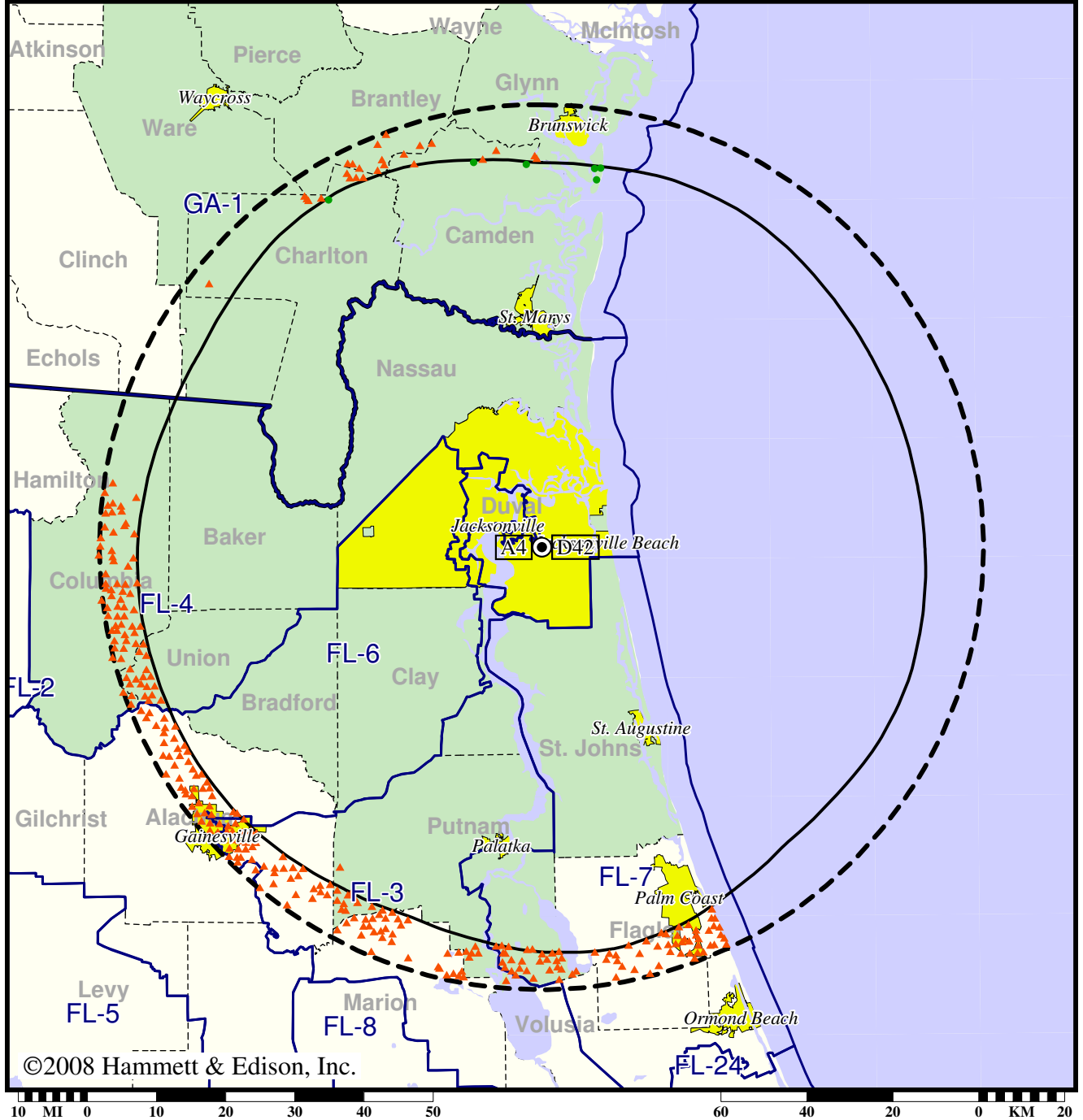
● Coverage gained after DTV transition  
(no symbol) No change in coverage

TV Station WJXT • Analog Channel 4, DTV Channel 42 • Jacksonville, FL

Expected Change In Coverage: Licensed Operation

Licensed (solid): 976 kW ERP at 294 m HAAT  
vs. Analog (dashed): 100 kW ERP at 293 m HAAT

Market: Jacksonville, FL



©2008 Hammett & Edison, Inc.

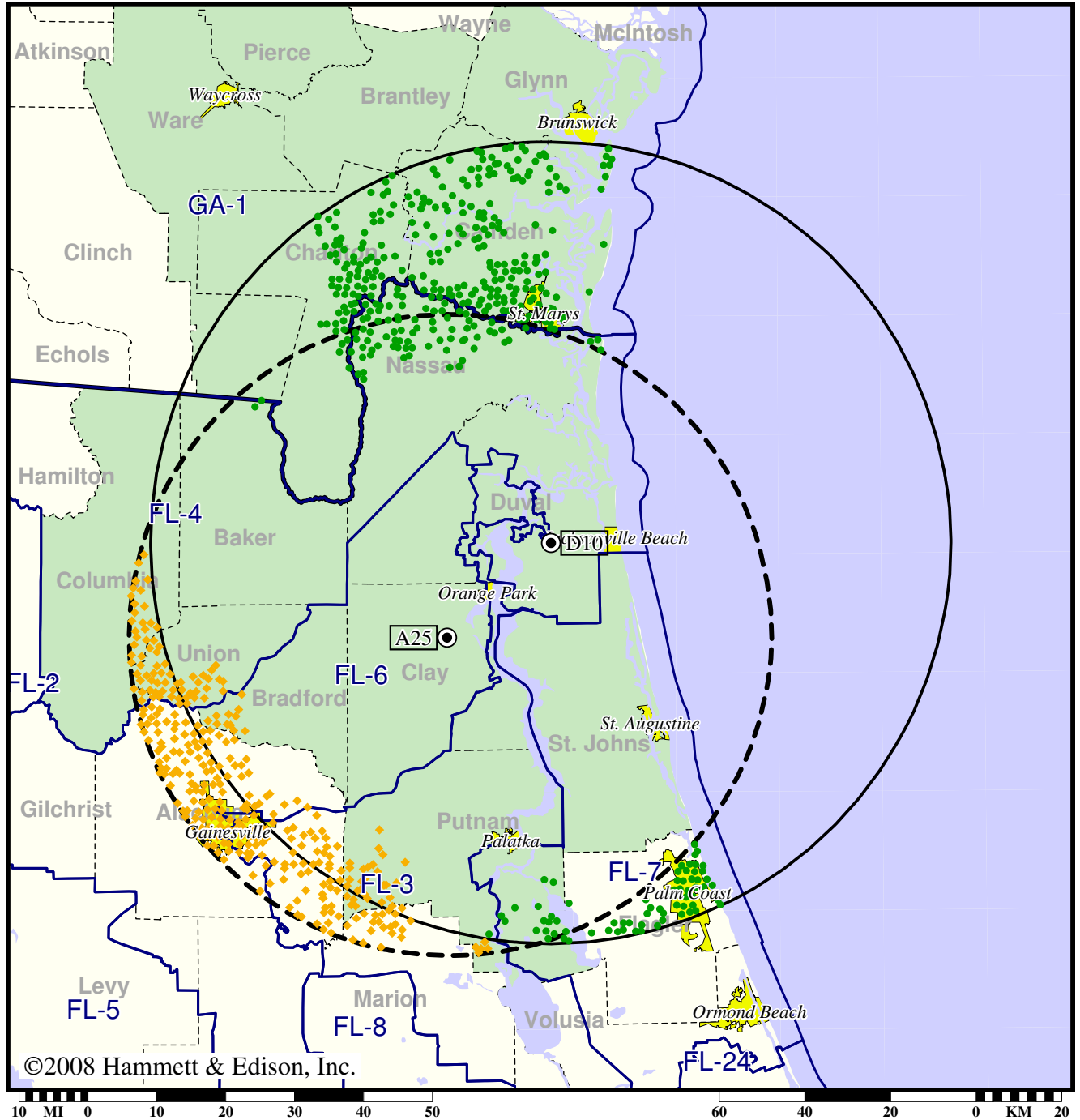
- Coverage gained after DTV transition
- (no symbol) No change in coverage
- ▲ Coverage lost after DTV transition

TV Station WJXX • Analog Channel 25, DTV Channel 10 • Orange Park, FL

Expected Change In Coverage: Licensed Operation

Licensed (solid): 11.1 kW ERP at 307 m HAAT, Network: ABC  
vs. Analog (dashed): 5000 kW ERP at 201 m HAAT, Network: ABC

Market: Jacksonville, FL



©2008 Hammett & Edison, Inc.

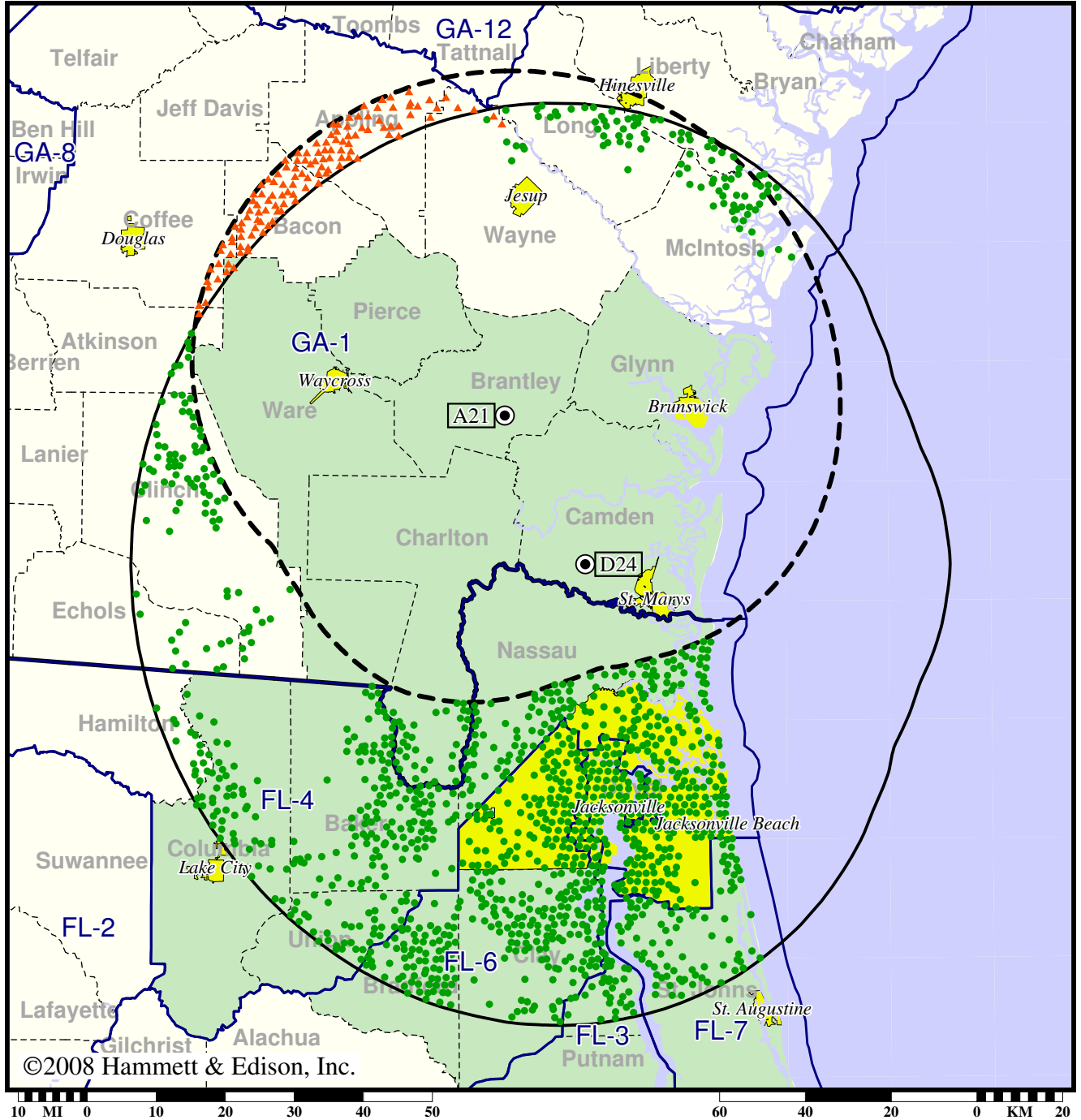
- Coverage gained after DTV transition
- (no symbol) No change in coverage
- ◆ Coverage lost but still served by same network

Station WPXC-TV • Analog Channel 21, DTV Channel 24 • Brunswick, GA

Expected Change In Coverage: Granted Construction Permit

CP (solid): 790 kW ERP at 417 m HAAT  
vs. Analog (dashed): 2630 kW ERP at 311 m HAAT

Market: Jacksonville, FL



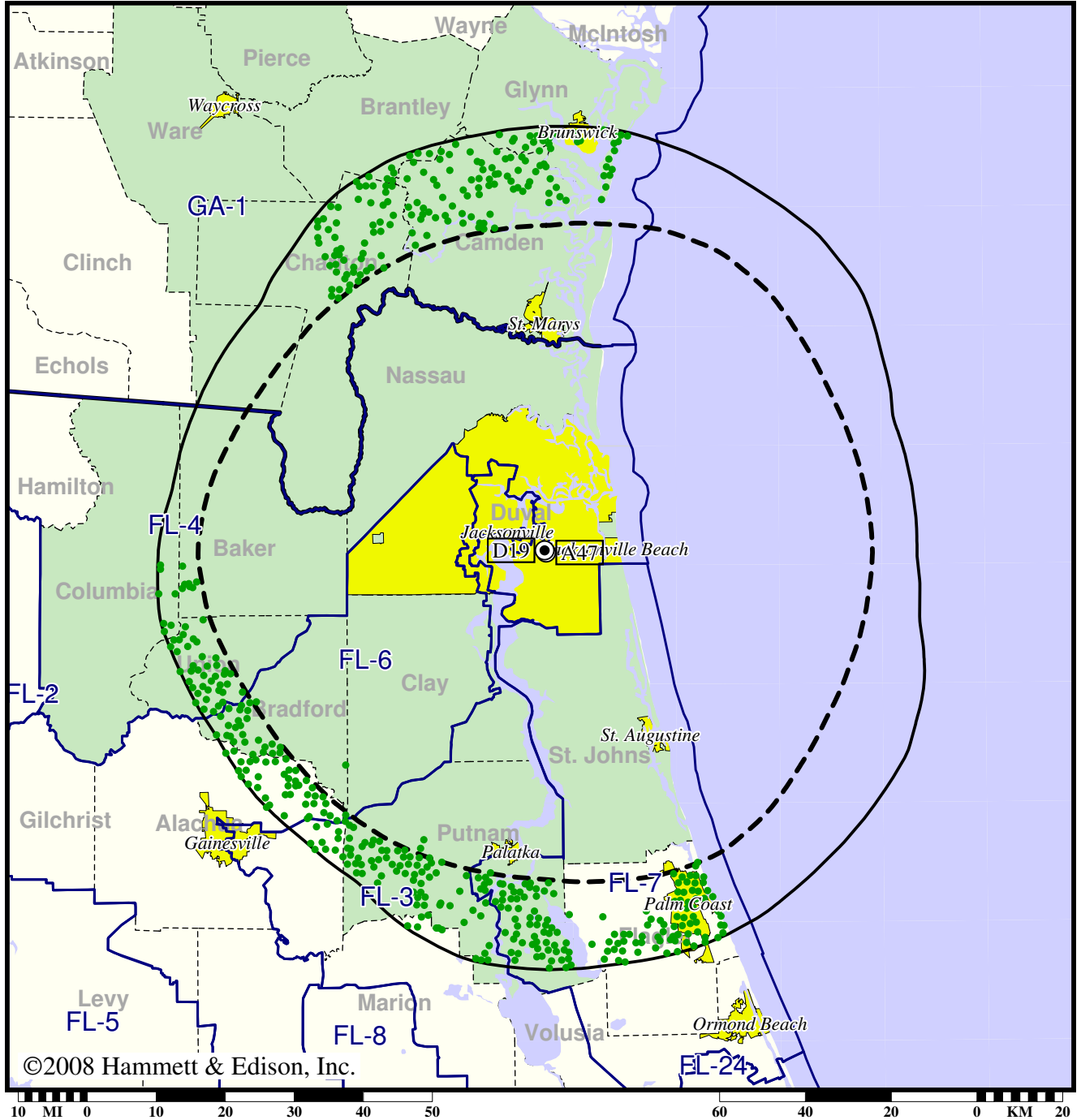
- Coverage gained after DTV transition
- (no symbol) No change in coverage
- ▲ Coverage lost after DTV transition

Station WTEV-TV • Analog Channel 47, DTV Channel 19 • Jacksonville, FL

Expected Change In Coverage: Licensed Operation

Licensed (solid): 1000 kW ERP at 291 m HAAT, Network: CBS  
vs. Analog (dashed): 5000 kW ERP at 299 m HAAT, Network: CBS

Market: Jacksonville, FL



- Coverage gained after DTV transition
- (no symbol) No change in coverage

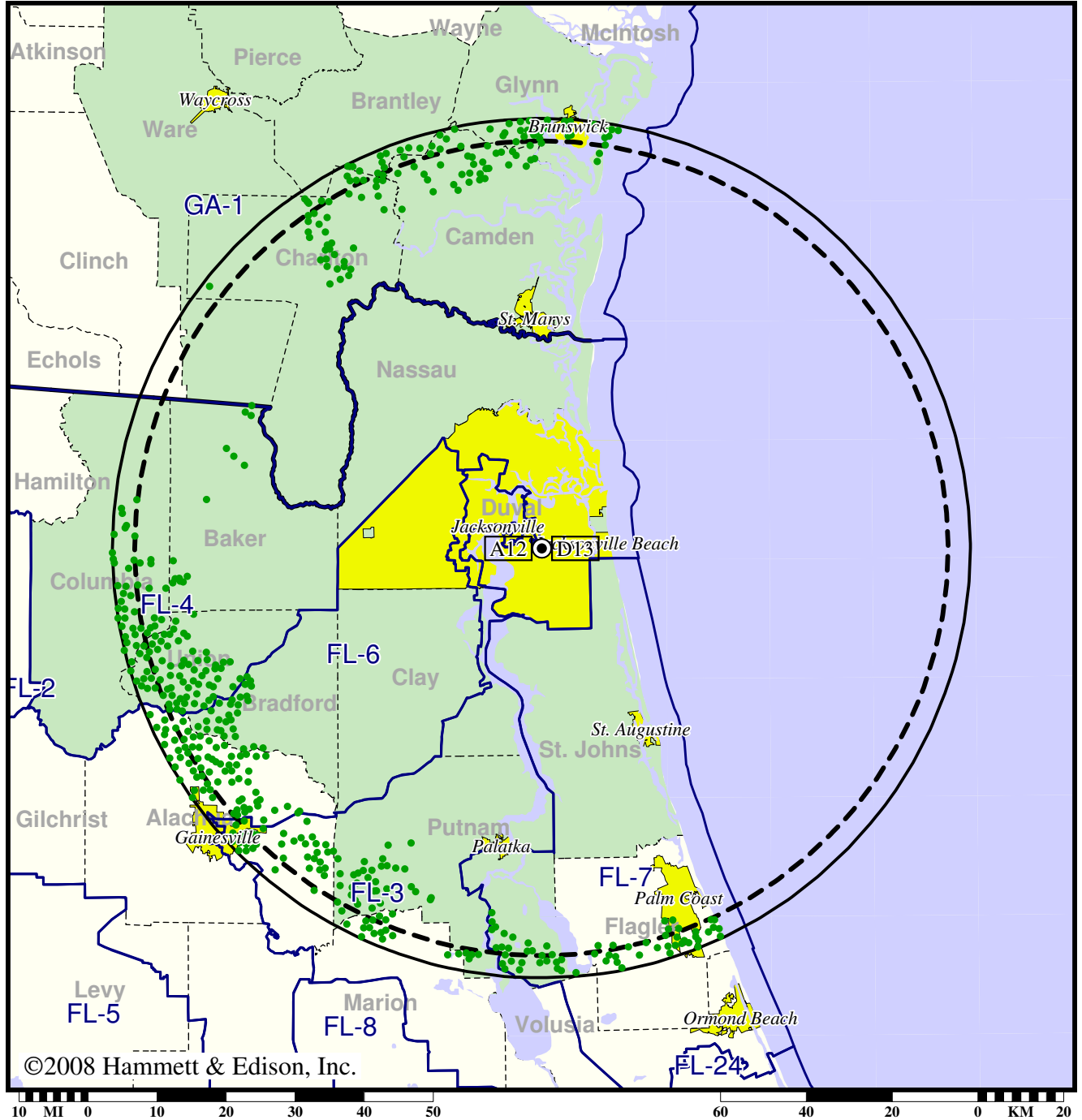


TV Station WTLV • Analog Channel 12, DTV Channel 13 • Jacksonville, FL

Expected Change In Coverage: Licensed Operation

Licensed (solid): 25.0 kW ERP at 310 m HAAT, Network: NBC  
vs. Analog (dashed): 316 kW ERP at 296 m HAAT, Network: NBC

Market: Jacksonville, FL



● Coverage gained after DTV transition

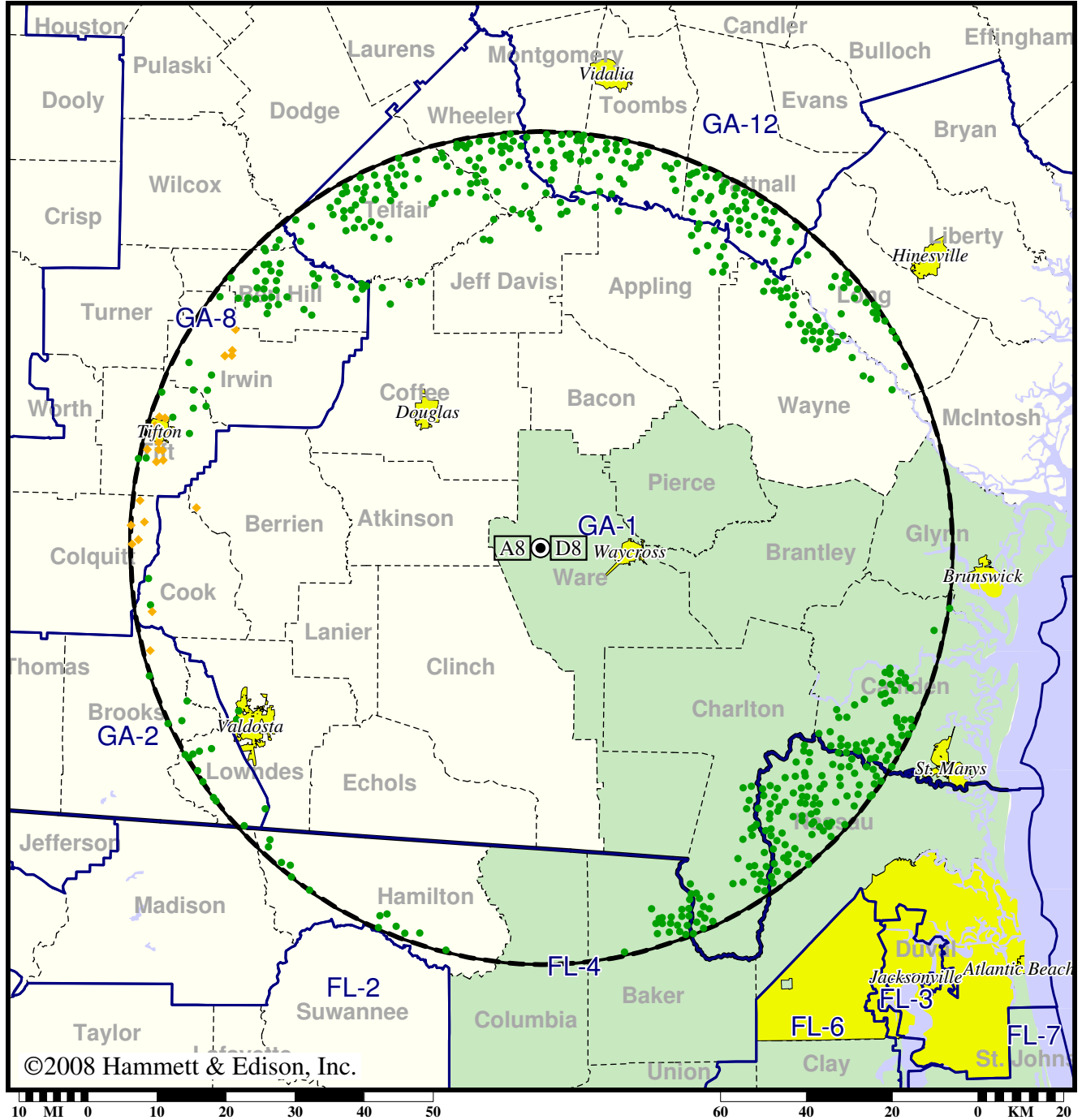
(no symbol) No change in coverage

Station WXGA-TV • Analog Channel 8, DTV Channel 8 • Waycross, GA

Expected Change In Coverage: Granted Construction Permit

CP (solid): 16.0 kW ERP at 308 m HAAT, Network: PBS  
vs. Analog (dashed): 316 kW ERP at 314 m HAAT, Network: PBS

Market: Jacksonville, FL



©2008 Hammett & Edison, Inc.

- Coverage gained after DTV transition
- (no symbol) No change in coverage
- ◆ Coverage lost but still served by same network