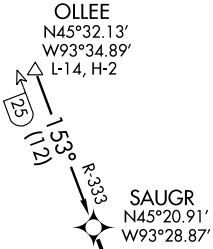


SAUGR ONE (FMS) ARRIVAL

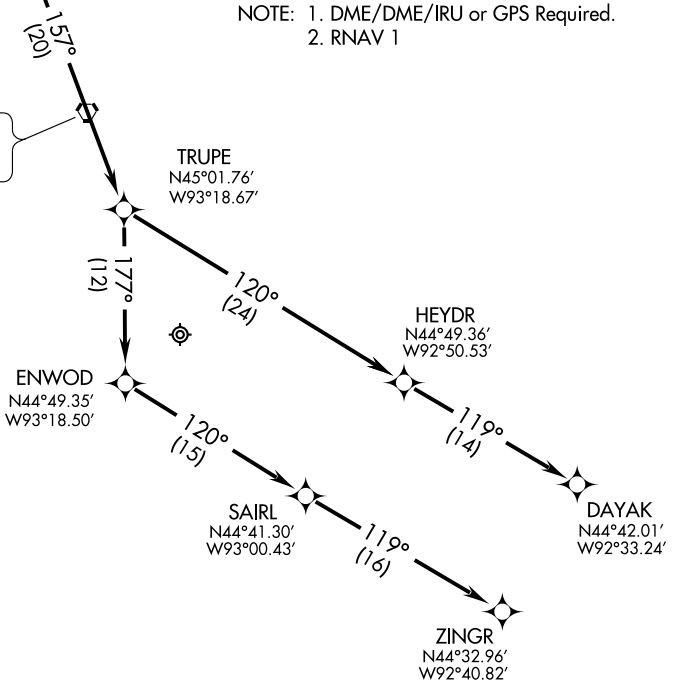
MINNEAPOLIS-ST PAUL INTL/WOLD-CHAMBERLAIN
ST-264 (FAA) MINNEAPOLIS, MINNESOTA

MINNEAPOLIS APP CON
119.3 335.5
ATIS 135.35 239.275



- NOTE: RADAR required.
 NOTE: Expect radar vectors from FMS route to final approach course.
 NOTE: 1. DME/DME/IRU or GPS Required.
 2. RNAV 1

GOPHER
 117.3 GEP
 Chan 120



NOTE: Chart not to scale.

Via the GOPHER STAR from over SAUGR WP. Thence

FOR RUNWAY 30L ARRIVALS: To TRUPE WP to ENWOD WP to SAIRL WP to ZINGR WP.

FOR RUNWAY 30R ARRIVALS: To TRUPE WP to HEYDR WP to DAYAK WP.

NC-1, 12 FEB 2009 to 12 MAR 2009

NC-1, 12 FEB 2009 to 12 MAR 2009

SAUGR ONE (FMS) ARRIVAL

MINNEAPOLIS, MINNESOTA
MINNEAPOLIS-ST PAUL INTL/WOLD-CHAMBERLAIN