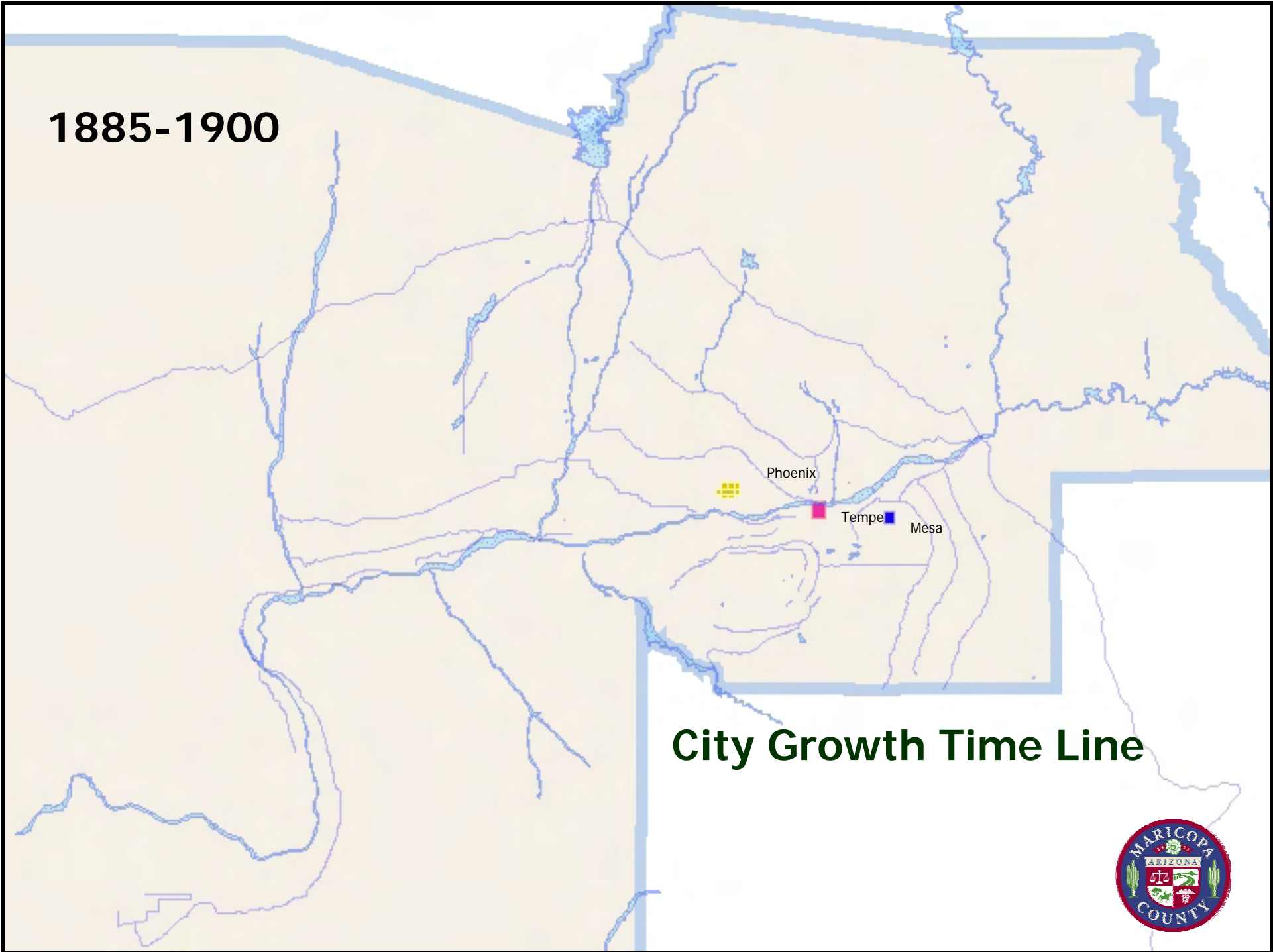




Western Maricopa County Development Patterns

Maricopa County Planning & Development Department

1885-1900



City Growth Time Line



1885-1900

1901-1910

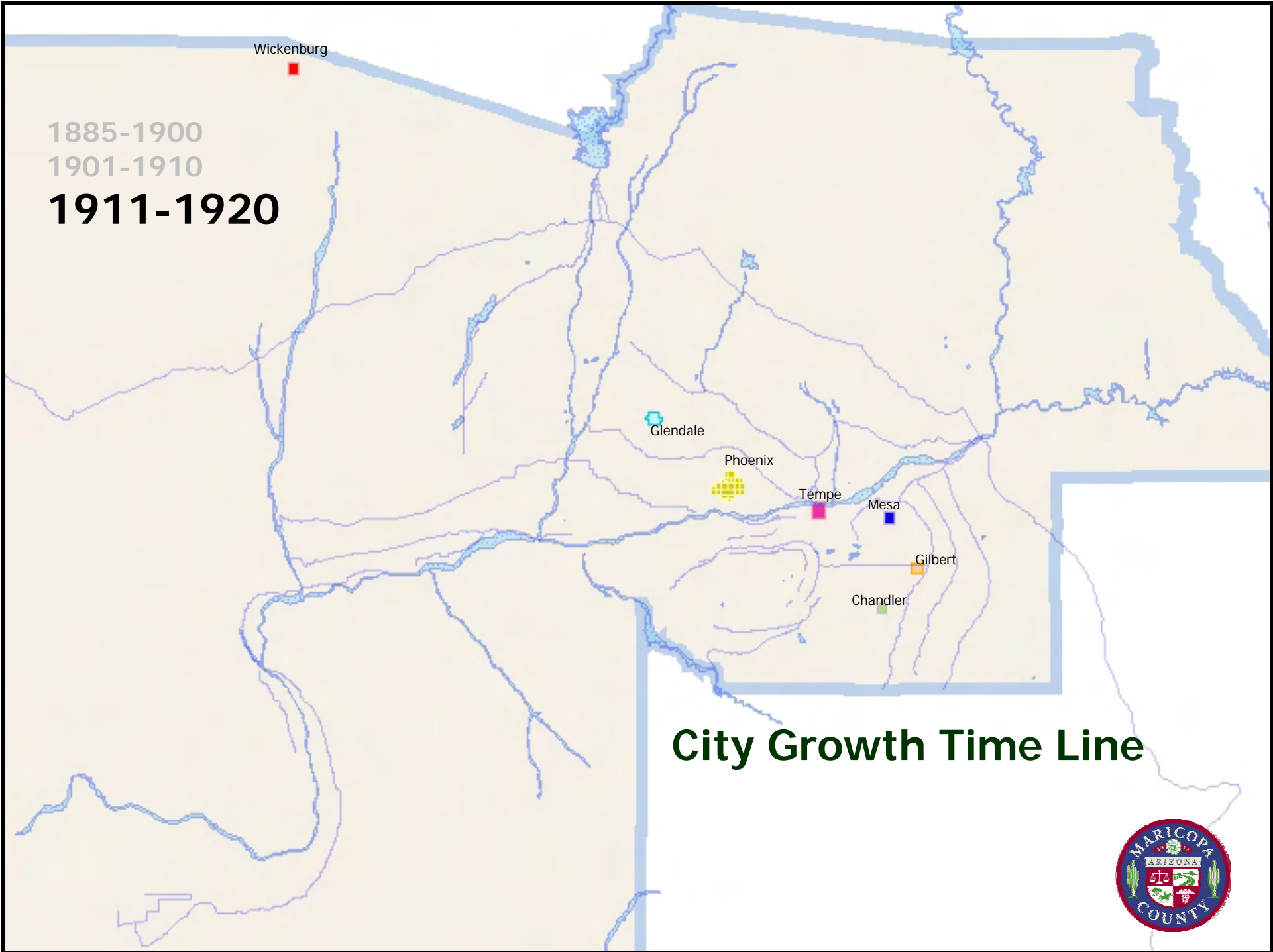
Phoenix

Tempe

Mesa

City Growth Time Line

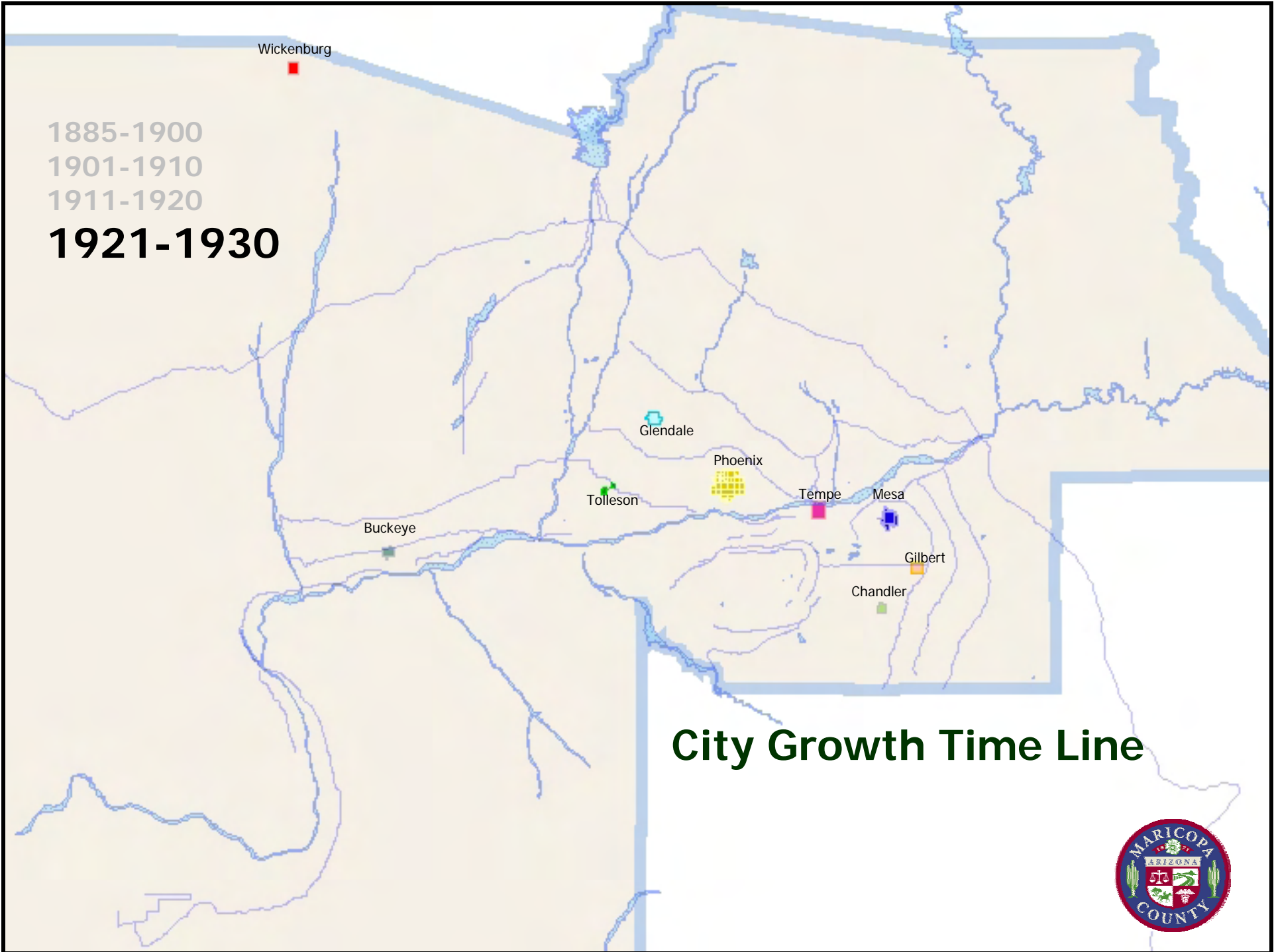


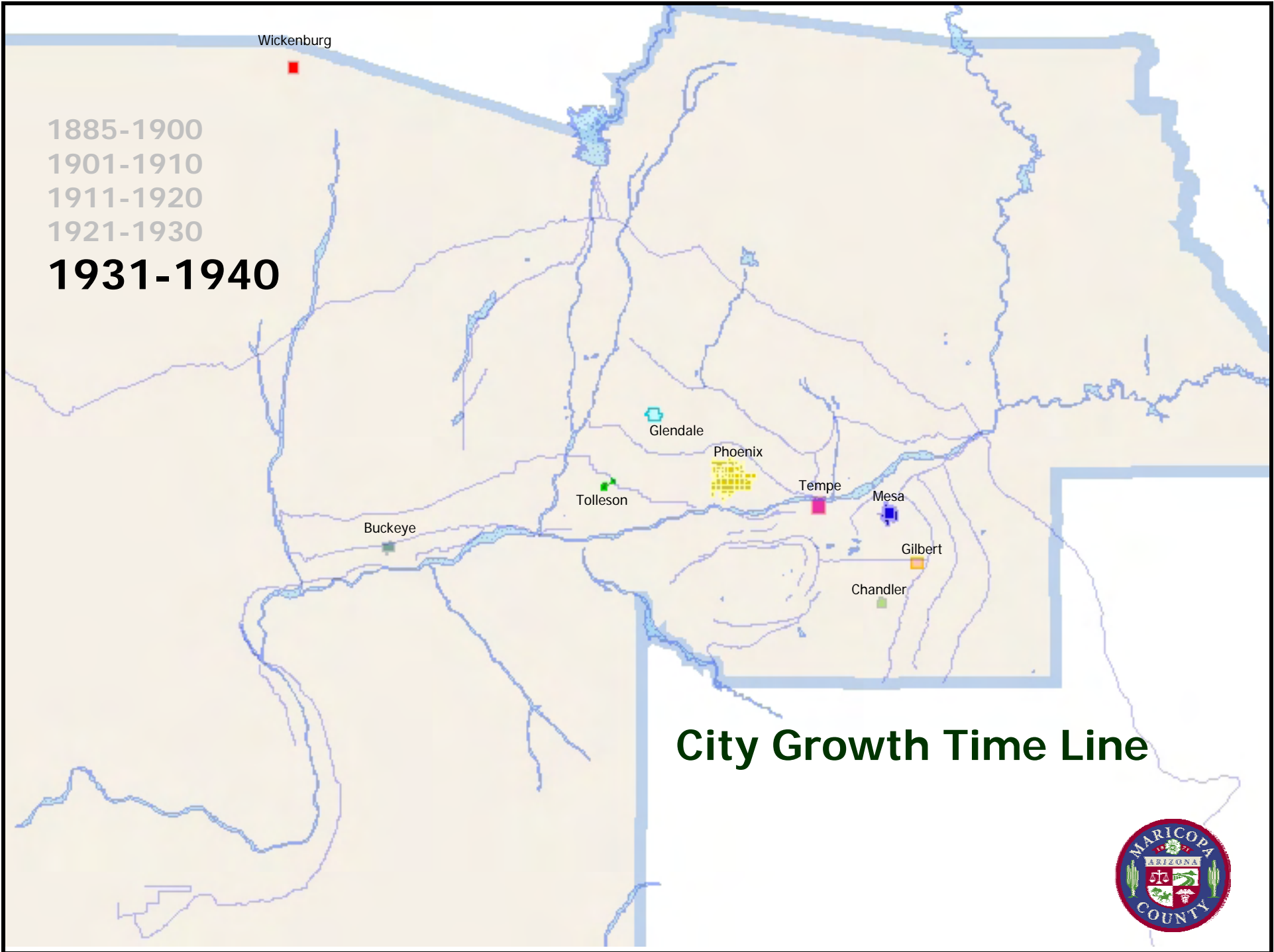


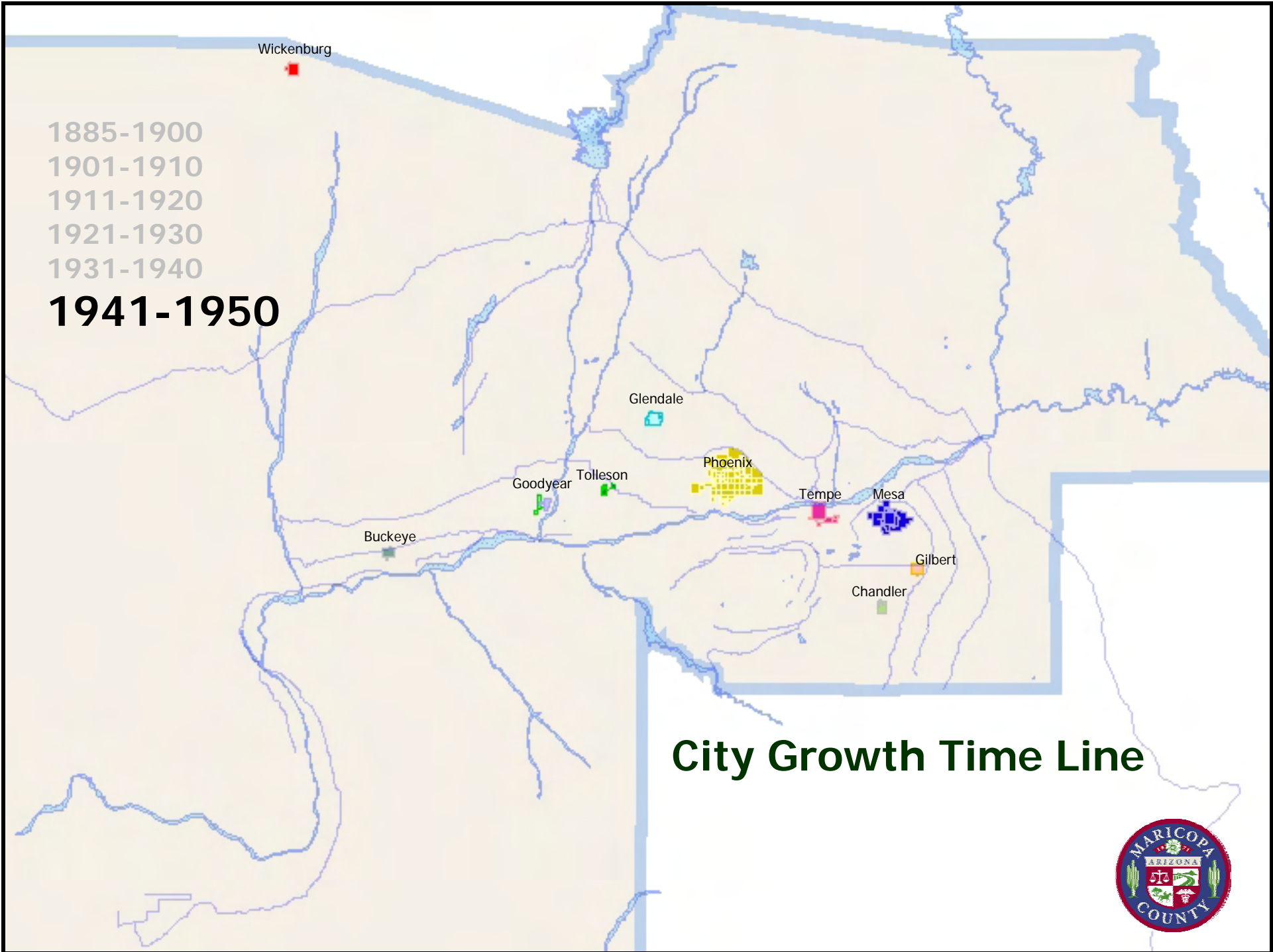
1885-1900
1901-1910
1911-1920

City Growth Time Line





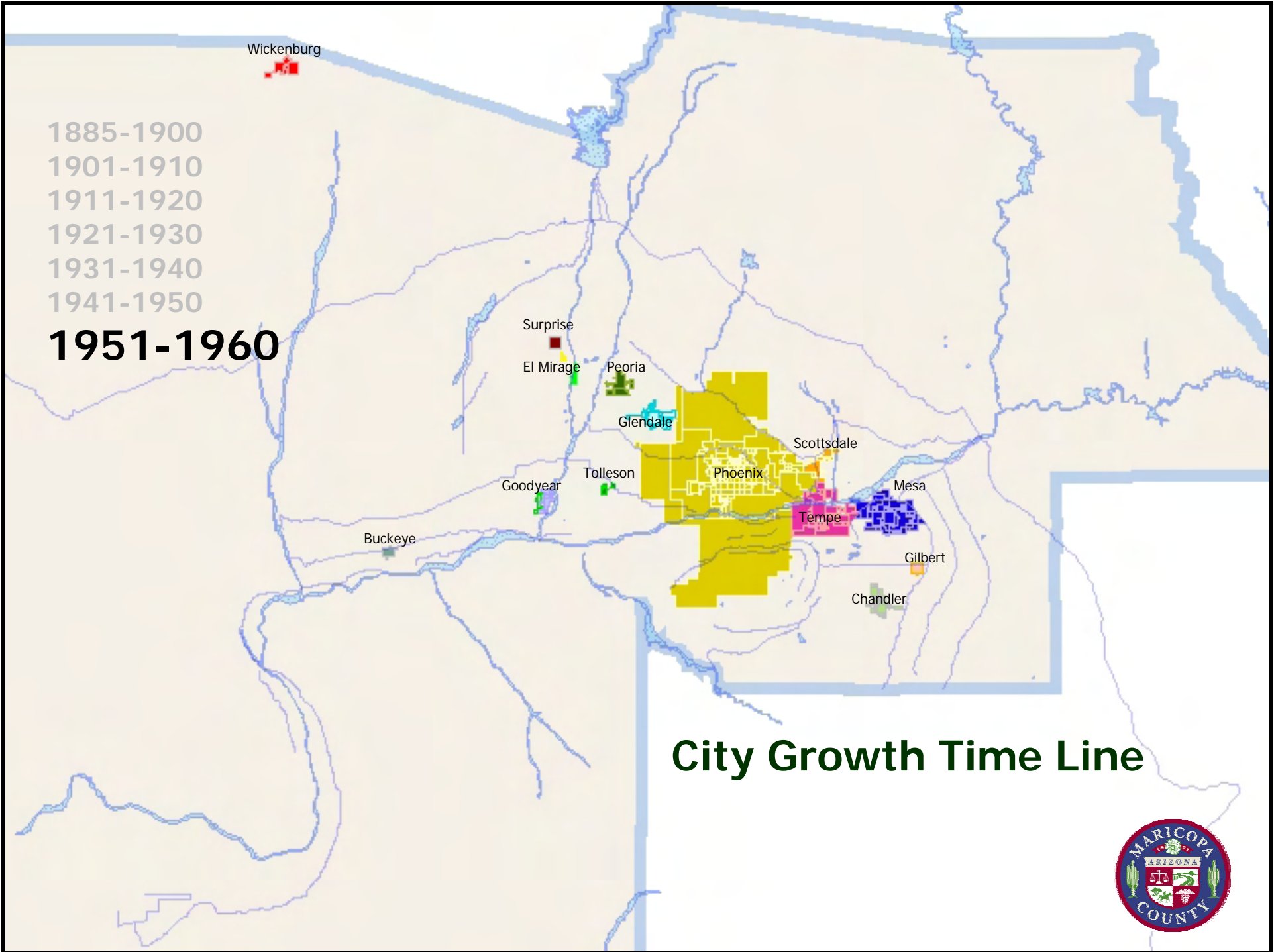




1885-1900
1901-1910
1911-1920
1921-1930
1931-1940
1941-1950

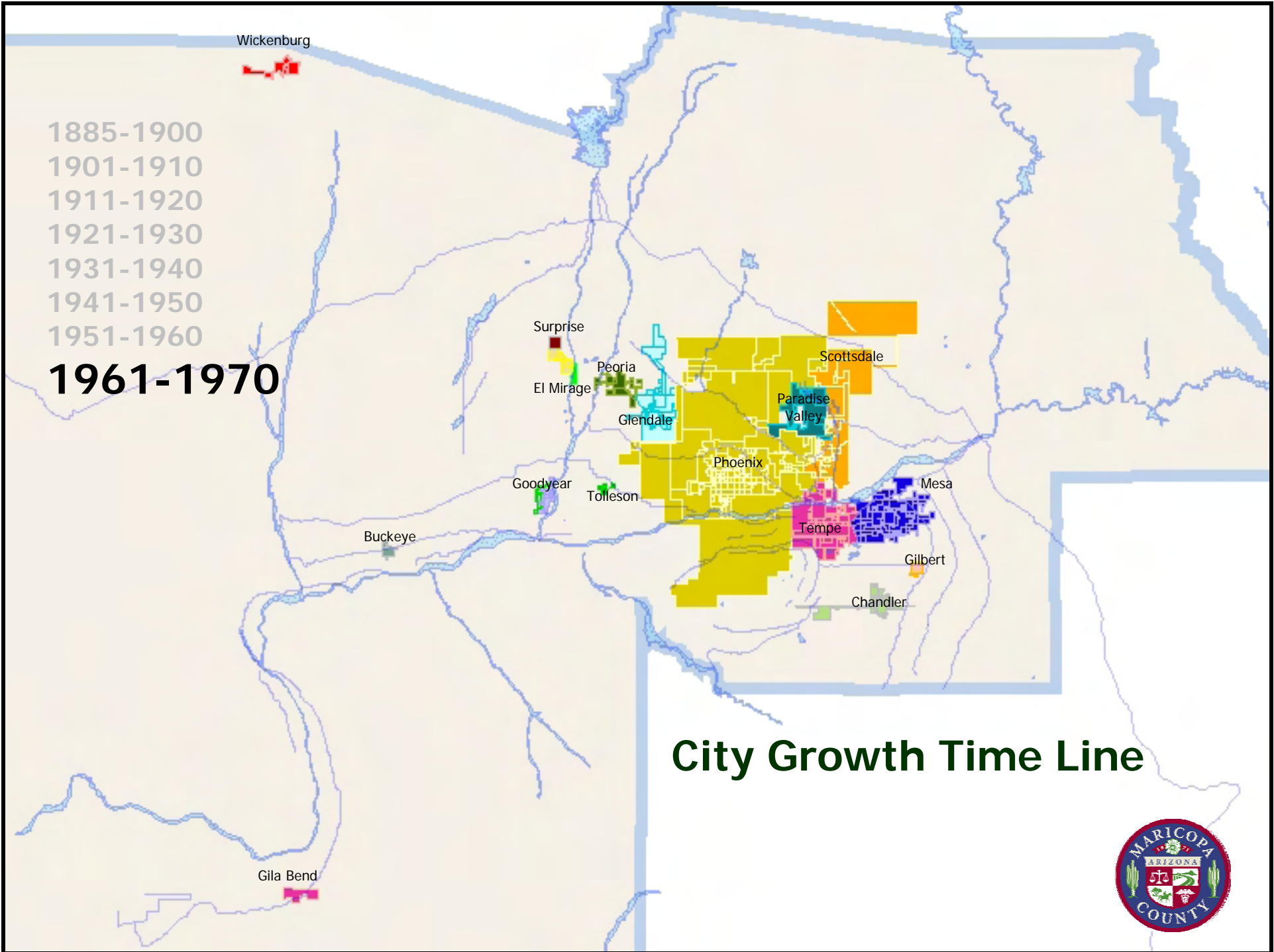
City Growth Time Line

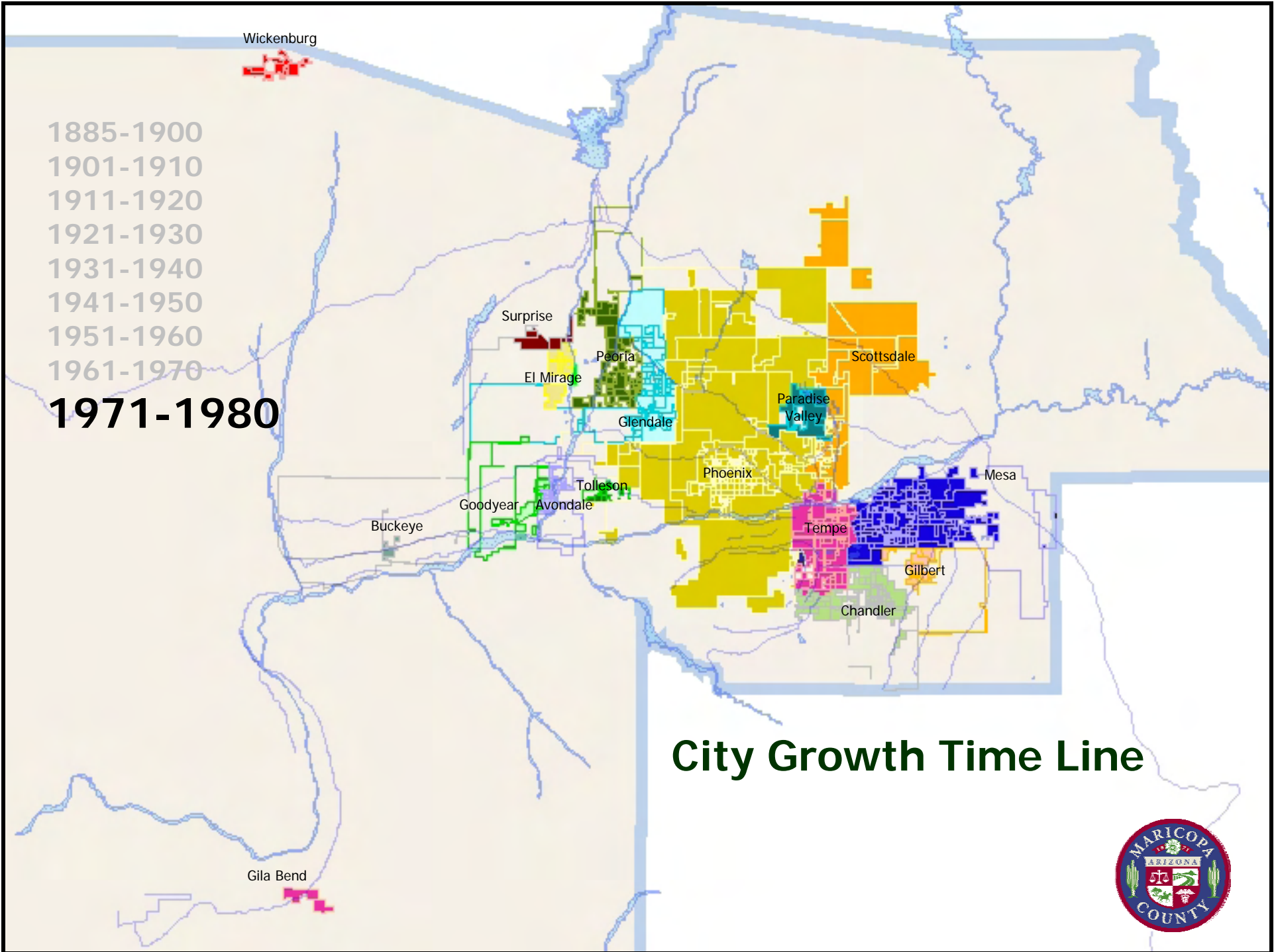


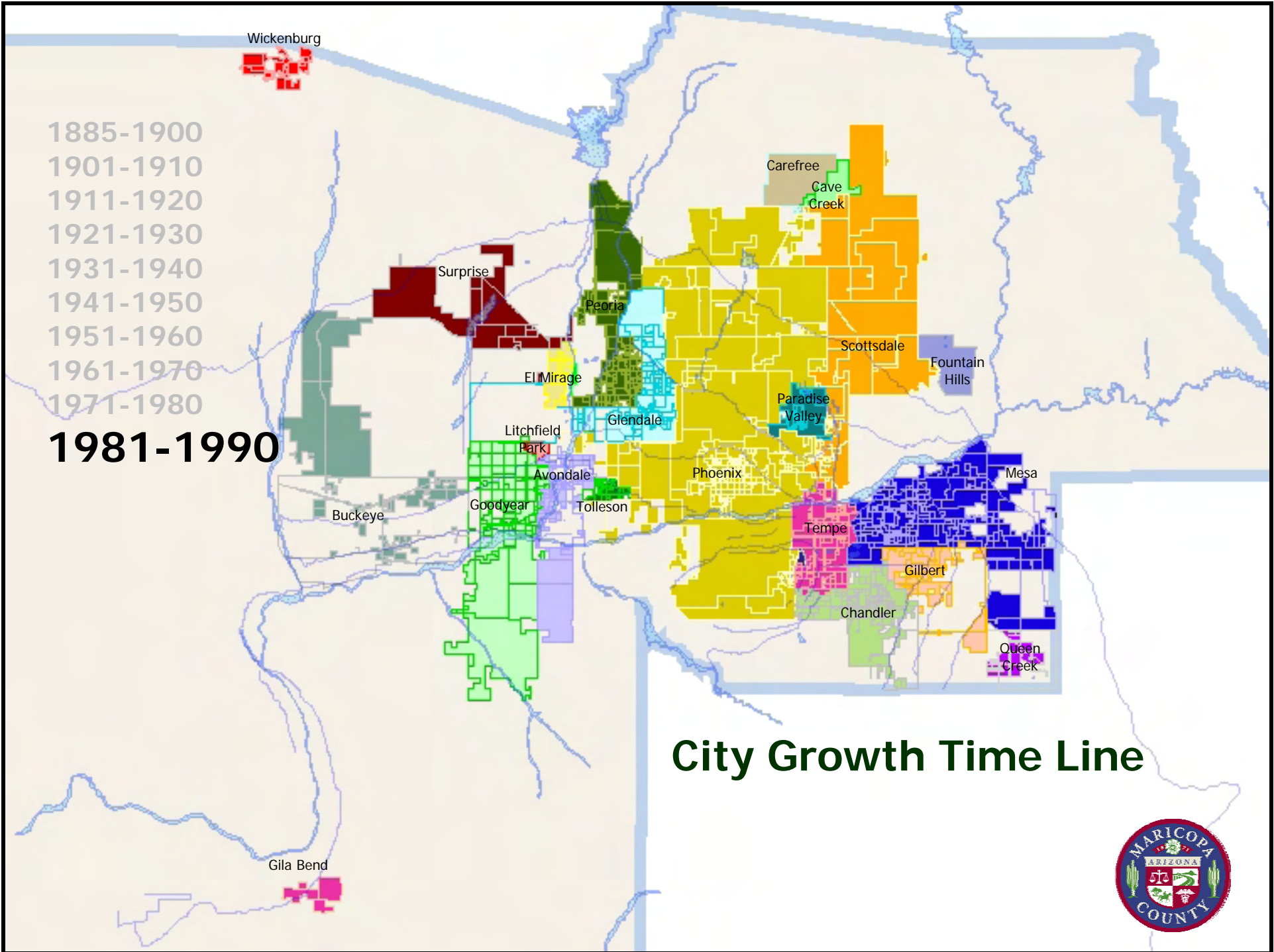


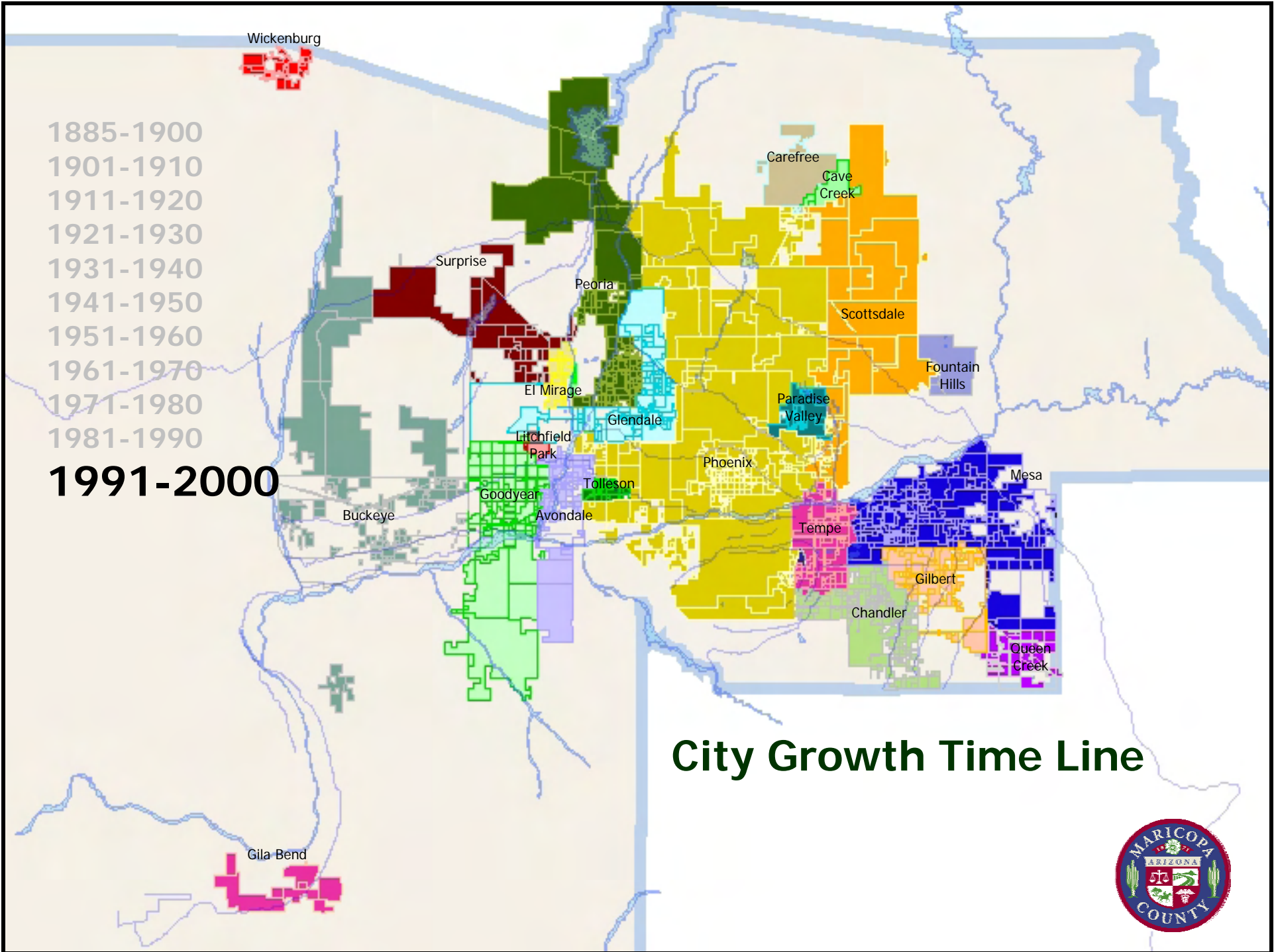
City Growth Time Line





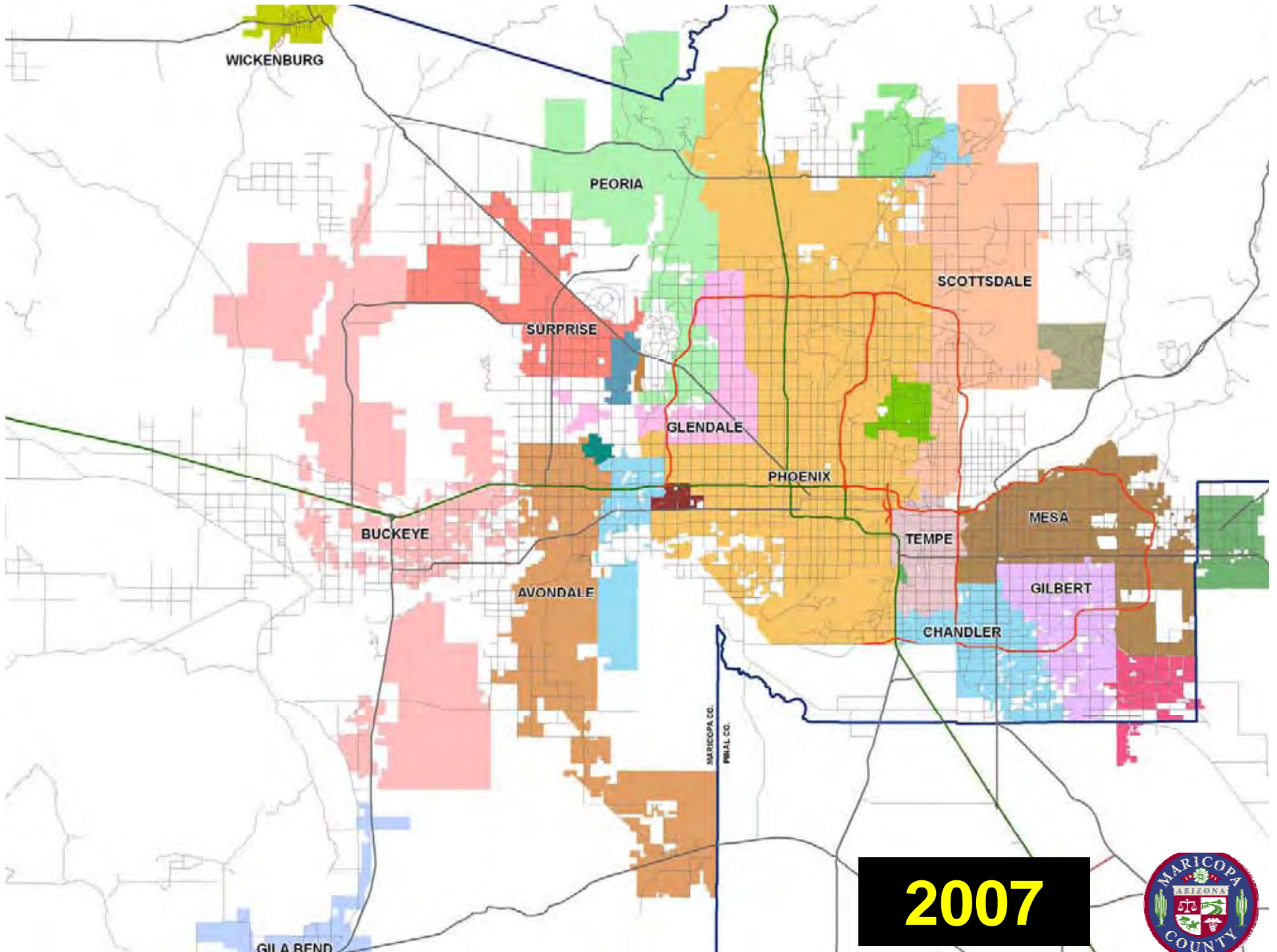






City Growth Time Line





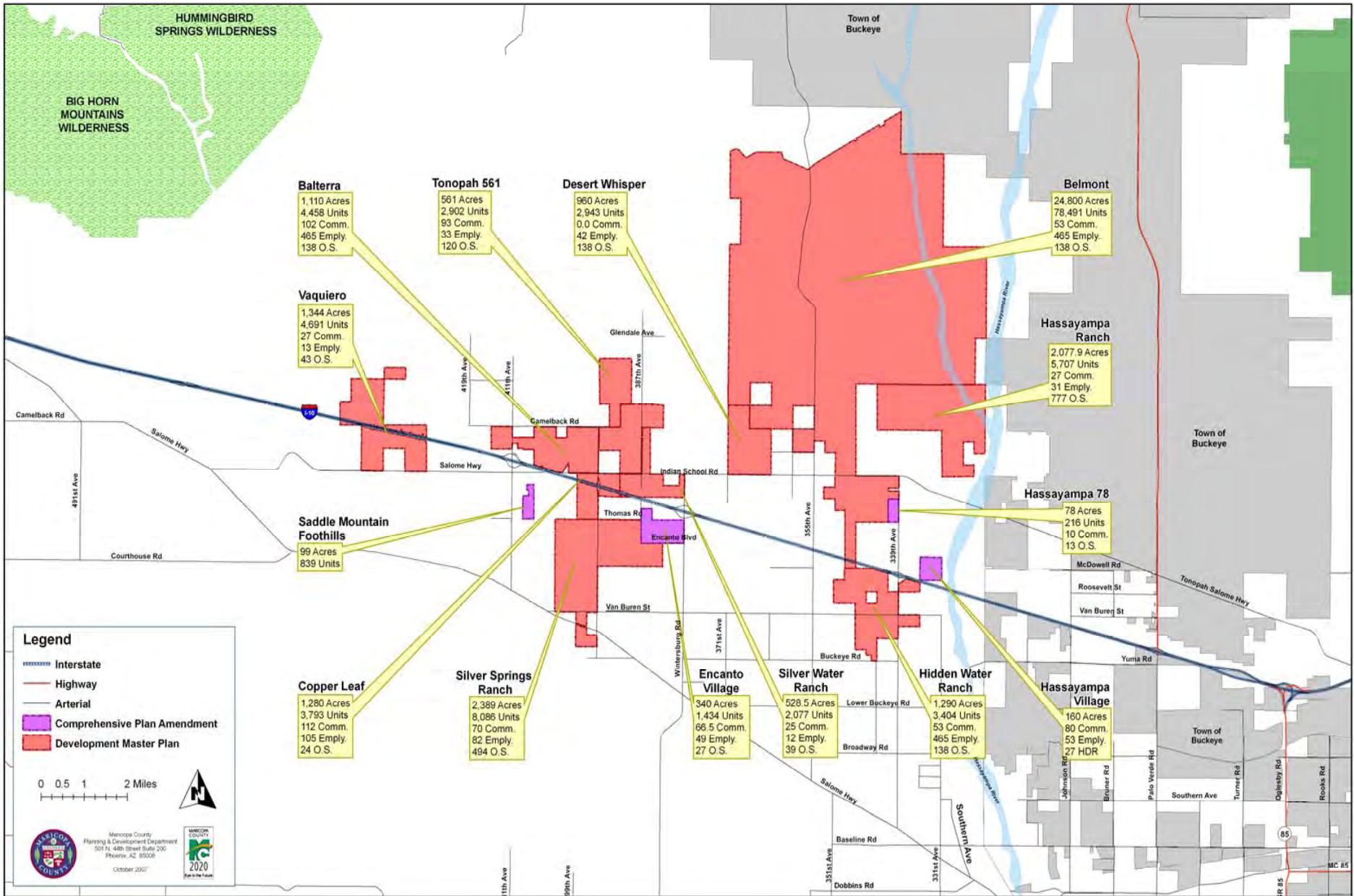
2007



Maricopa County Population Projections*

CITY	2005	PROJECTION 2030	Percent Increase
Avondale	70,160	123,265	76%
Buckeye	32,735	419,146	1180%
Carefree	3,654	6,097	67%
Cave Creek	4,845	9,656	99%
Chandler	236,073	283,792	20%
El Mirage	31,935	38,717	21%
Fountain Hills	24,347	33,810	39%
Gila Bend	2,118	9,074	328%
Gilbert	178,708	300,295	68%
Glendale	257,891	315,055	22%
Goodyear	47,520	299,397	530%
Guadalupe	5,555	5,983	8%
Litchfield Park	6,787	10,510	55%
Mesa	486,296	584,866	20%
Paradise Valley	14,136	15,352	9%
Peoria	141,441	306,070	116%
Phoenix	1,510,177	2,201,843	46%
Queen Creek	19,879	72,947	267%
Scottsdale	234,515	286,020	22%
Surprise	93,356	401,458	330%
Tempe	165,740	197,970	19%
Tolleson	6,491	10,193	57%
Wickenburg	9,606	17,732	85%
Youngtown	6,011	7,359	22%
Total County	3,589,976	5,956,607	66%

* Maricopa Association of Governments



Project Name	Total Acres	Residential Units	Commerial Acres	Employment Acres	Open Space Acres
Hidden Waters Ranch	1,290	3,404	53	465	138
Balterra	1,110	4,458	102	105	149
Belmont	24,800	78,491	2,792	718	3,392
Copper Leaf	1,280	3,793	112	105	24
Desert Whisper	960	2,943	-	42	138
Hassayampa Ranch	2,078	5,707	27	31	777
Silver Spring Ranch	2,389	8,086	70	82	494
Silver Water Ranch	529	2,077	25	12	39
Tonopah 561	561	2,902	27	13	42
Vaquiero	1,334	4,691	93	33	120
Saddle Mtn Foothills	99	1,445	-	-	-
Hassayampa 78	78	216	10	-	-
Hassayampa Village	160	405	80	53	-
TOTAL	Total Acres	Residential Units	Commerial Acres	Employment Acres	Open Space Acres
	36,668	118,618	3,391	1,606	5,313
		Pop = 320,000			

