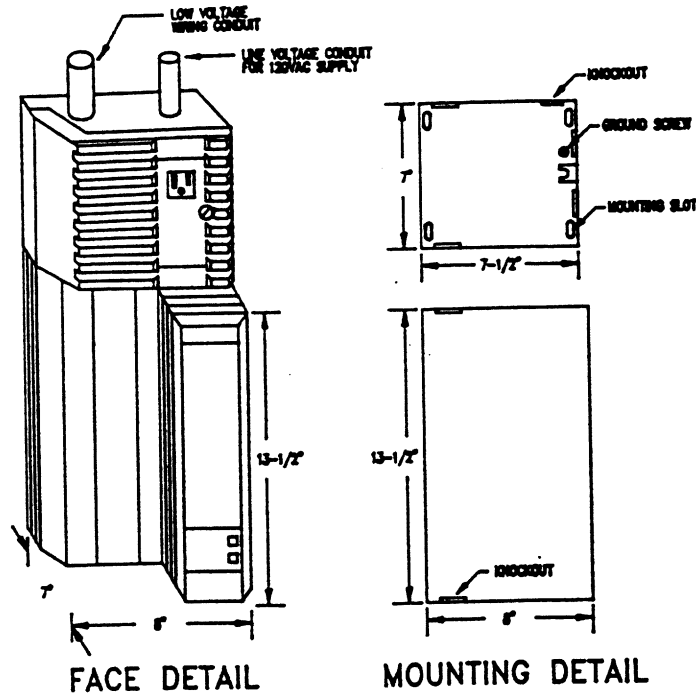


A-ENC-AHU

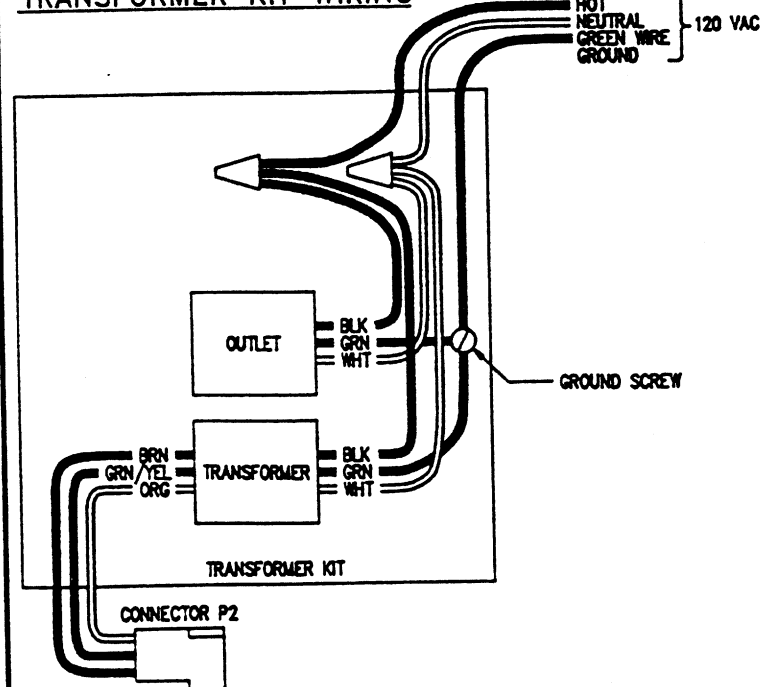
TRANSFORMER KIT AND AHU ENCLOSURES



CAUTION:
 AHU enclosure is non-metallic and does not itself provide grounding.
 Enter only at knockout locations provided.
 Avoid routing conduit through the following in the transformer kit:
 - Support the ground mounting holes
 - into the base frame
 - into wire ducts
 - into agency labels on enclosure

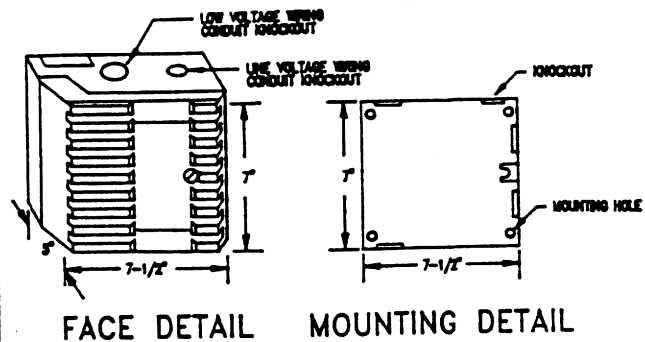
A-ENC-POWER

TRANSFORMER KIT WIRING



A-ENC-RLY

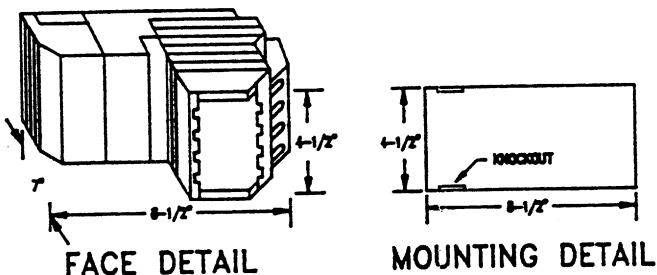
RELAY KIT ENCLOSURE



CAUTION:
 Enter only at knockout locations provided.
 Avoid routing conduit through the following:
 - Support the ground mounting holes
 - into the base frame
 - into wire ducts
 - into agency labels on enclosure

A-ENC-FMK

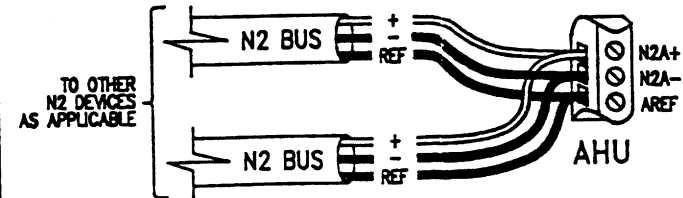
FMK ENCLOSURE



CAUTION:
 Enter only at knockout locations provided.

A-ENC-AHU-N2

N2 TRUNK COMMUNICATIONS



* IF SHIELDED WIRE IS USED, SEE DETAIL A-SHIELD-GROUND FOR SHIELD TERMINATION PROCEDURE.

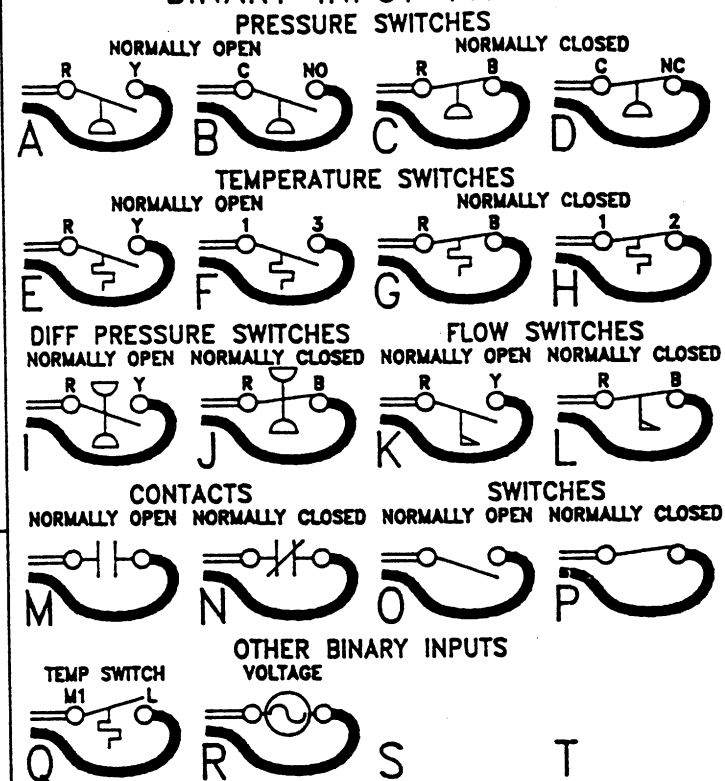
A-BIN-2TWIST-L-x

BINARY INPUT WIRED TO AHU



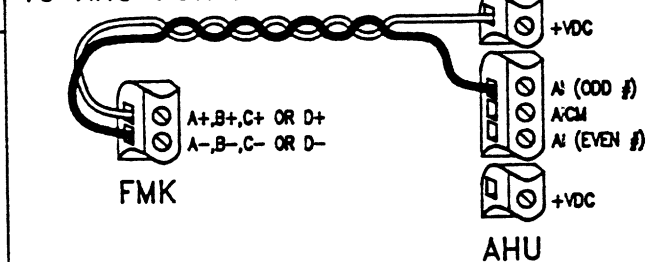
BINARY-ENDS

BINARY INPUT TYPES



A-FMK-AI-2TWIST-L

WIRING FROM REMOTE FMK TO AHU FOR ANALOG INPUTS



A-NO-2TWIST-R

N.O. RELAY CONTACT FROM RLY



DRAWING TITLE
 HVAC DETAILS #04

PROJECT
 The Argonne National Lab
 Advanced Photon Source Campus
 9700 Cass Avenue South
 Argonne, IL 60439

JOHNSON CONTROLS
 Systems & Services Division

3007 MALMO ROAD
 ARLINGTON HEIGHTS
 ILLINOIS 60008
 708/284-1000 Main
 708/284-4438 Eng

CONTRACT NUMBER
 91390-0009

DRAWING NUMBER

FILE: H-REF-04