

Qal	Alluvium deposits	Quaternary
Tf	Felsic plutonic rocks, dominantly tonalite	Tertiary (?)
Kd	Diorite sill, extensively altered	Cretaceous (?)
Ks	Sitka graywacke, sandstone siltstone, mudstone, turbidites, and graywacke	Cretaceous
Kkb	Kelp Bay Group Metasediments and metavolcanics including schist, phyllite, greenstone, marble, chert, graywacke, metatuff and argillite	Cretaceous
Kuf	Felsic plutonic rocks, dominantly granodiorite	Cretaceous and Jurassic
Kjm	Mafic plutonic rocks, dominantly quartz diorite and diorite	Cretaceous and Jurassic
Rw	Whitestripe Marble	Triassic (?)
Rg	Goon Dip Greenstone	Triassic (?)
MzPzu	Metamorphic, metavolcanic & metasedimentary rocks	Mesozoic and Paleozoic

----- Contact, dashed where approximate or inferred, dotted where concealed

----- Above geology modified from Johnson and Karl, 1981

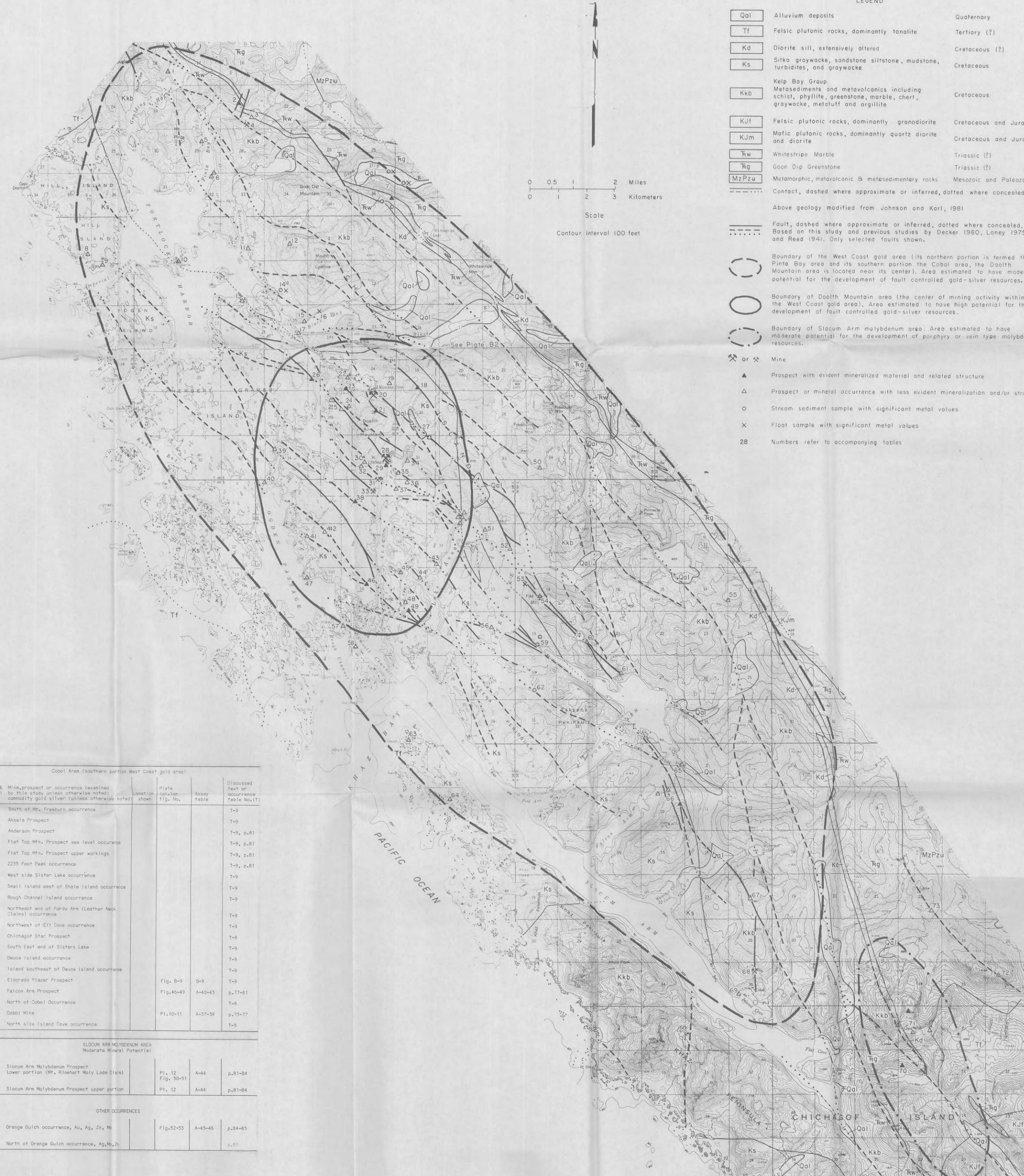
----- Fault, dashed where approximate or inferred, dotted where concealed. Based on this study and previous studies by Decker 1980, Loney 1975 and Reed 1941. Only selected faults shown.

○ Boundary of the West Coast gold area (its northern portion is termed the Pinta Bay area and its southern portion the Cobol area, the Doalth Mountain area is located near its center). Area estimated to have moderate potential for the development of fault controlled gold-silver resources.

○ Boundary of Doalth Mountain area (the center of mining activity within the West Coast gold area). Area estimated to have high potential for the development of fault controlled gold-silver resources.

○ Boundary of Slocum Arm molybdenum area. Area estimated to have moderate potential for the development of porphyry or vein type molybdenum resources.

- ✕ or ✕ Mine
- ▲ Prospect with evident mineralized material and related structure
- △ Prospect or mineral occurrence with less evident mineralization and/or structure
- Stream sediment sample with significant metal values
- ✕ Float sample with significant metal values
- 28 Numbers refer to accompanying tables



WEST COAST GOLD AREA Moderate mineral potential					
Pinta Bay area (Northern portion West Coast gold area)					
Map # & Symbol	Mine prospect or occurrence (examined by this study unless otherwise noted) commodity gold silver (unless otherwise noted)	Location shown	Plate (p)lor fig. No.	Assay table	Discussed text or occurrence table No.(T)
1	Cox Brothers Prospect		44		p. 70
2	New Chichagof Mining Syndicate Prospect	Pl. 7	Pl. 8 Fig. 42	A-33-35	p. 65-67
3	Golden Hand Prospect	Pl. 7			p. 71
4	Golden Hand Apex Mine	Pl. 7	Fig. 39-41	A. 32	p. 61-64
5	West side Pinta Bay occurrence				T-8
6	East side Pinta Bay occurrence				T-8
7	Whitestripe Ag,Pb,Zn,Au Prospect	Pl. 9		A-36	p. 68-69
8	Congress Prospect - Cu, Zn	Fig. B-8		B-8	p.72,T-8
9	Senate Copper Prospect (not found)				T-8
10	Triplet Island Prospect-Zn, Ag, Pb, Mo, Au				p.72,T-8
11	Dirdrickson Bay occurrence				T-8
12	Northwest peak Mt. Lydonia occurrence				T-8
13	North Herbert Groves Is. occurrence				T-8
14	Mt. Lydonia landslide occurrence				p.72,T-8
15	Northwest side Black Bay occurrence				T-8
16	North side Black Bay occurrence				T-8
17	Mouth of Black Bay occurrence				T-8

DOALTH MOUNTAIN AREA High mineral potential					
Map # & Symbol	Mine prospect or occurrence (examined by this study unless otherwise noted) commodity gold silver (unless otherwise noted)	Location shown	Plate (p)lor fig. No.	Assay table	Discussed text or occurrence table No.(T)
18	McKallick Lode Prospect	Pl. 3	Fig.27	A-22	p. 46
19	Marinovich Prospect	Pl. 3			T-7
20	Hirst-Chichagof Mine	Pl. 3	Pl. 6 Fig.14-15 Fig.21-22	A-11 A-17-18	p. 28-38
Occurrences within the Hirst-Chichagof Claim Group					
	Elkton Prospect	Pl. 3	Fig. 16	A-12	T-6
	Sunday Queen Prospect	Pl. 3	Fig. 17	A-13	T-6
	Kay Prospect	Pl. 3			T-6
	Tillison Prospect	Pl. 3	Fig. 18	A-14	T-6
	Janet Prospect	Pl. 3	Fig. 19	A-15	T-6,p.34-35
	Surprise Prospect	Pl. 3	Fig. 20	A-16	T-6
	Rarus Isis Prospect (not examined)	Pl. 3			T-6,p.32-34
21	Hodson Prospect	Pl. 3	Fig. 37	A-31	p. 58-60
22	Fitz Island occurrence	Pl. 3			T-7
23	Chichagoff Prosperity Prospect	Pl. 3	Fig. 29-30	A-24-25	p. 48-50
24	Gloria B Prospect	Pl. 3			T-7
25	Basaliner Prospect	Pl. 3			T-7
26	Bauer Prospect	Pl. 3	Fig. 54-56	A-29-30	p. 56-57
27	Helen Chichagoff Prospect	Pl. 3			T-7
28	Chichagoff Mine	Pl. 3	Pl. 3-5 Fig. 2-6 Fig. 12-13	A-1-4 A-9-10	p. 13-27 T-3
Occurrences within the Chichagoff Claim Group					
	Rising Sun Prospect	Pl. 3,5	Fig. 6	A-4	T-3
	Over the Hill Prospect	Pl. 3,5		A-1	T-3
	Aurum Prospect lower adit	Pl. 3	Fig. 8	A-6	T-4,p.20,25
	Aurum Prospect upper adit	Pl. 3	Fig. 9	A-7	T-4,p.20,25
	Sitka Prospect lower adit	Pl. 3	Fig. 10	A-8	T-4,p.20,25
	Sitka Prospect upper adit	Pl. 3	Fig. 11	A-8	T-4,p.20,25
	Big Four Prospect(not found)	Pl. 3			T-4
	West Feet Prospect	Pl. 3	Fig. 7	A-5	T-4,p.20,25 53-56
	OB Prospect	Pl. 3			T-4,p.20,25 53-56
29	OB Prospect (McKallick Chichagoff Mines Inc. Claim Group)	Pl. 3	Fig. 7	A-5	T-4,p.20,25 53-56
Also within the McKallick Chichagoff Mines Inc. Claim Group					
	Lillian and Princesia Prospect	Pl. 3	Fig. 33	A-28	p.54-56
30	Flora Prospect	Pl. 3	Fig. 32	A-27	p.55
31	Alaska Chichagoff Mine	Pl. 3	Fig. 23		p.39-41
Also within the Alaska Chichagoff Mining Company Claim Group					
	Summit Prospect	Pl. 3			p.39-41
33	Jumbo Mine	Pl. 3	Fig. 24-25	A-19-20	p.41-44
Also within the Jumbo Mine Claim Group					
	Minnesota Workings	Pl. 3	Fig.25	A-20	p.41-44
	Gold Reef Shaft	Pl. 3			p.41-44
34	Power Line Prospect (Chichagoff Ext. Mining Company Claim Group)	Pl. 3	Fig. B-1	B-1	T-7,p.60
Also within the Chichagoff Ext. Mining Claim Group					
	Handy Prospect	Pl. 3	Fig. B-2	B-2	T-7
	Andy Prospect	Pl. 3			T-7
	Chichagoff Ext. #2 Prospect	Pl. 3	Fig. B-3	B-3	T-7
	Chichagoff King Prospect	Pl. 3	Fig. B-5	B-5	T-7
37	Hill and Berkland Prospect				T-7
38	American Gold Company Prospect	Fig. 31		A-26	p. 51-53
39	Hanton Prospect	Fig. B-4		B-4	T-7
40	West of Drip Point Occurrence				T-7
41	McKallick Placer Prospect	Fig. B-5		B-5	T-7
42	Klag Prospect				T-7
43	Wall Prospect	Fig. B-6		B-6	T-7
44	Lake Anna Prospect	Fig. B-7		B-7	T-7
45	Rose Point occurrence				T-7
46	Baney Prospect, Au, Ag, and W	Fig. 26		A-21	p. 44-46
47	Vein Point occurrence				T-7
48	Little Island Prospect				T-7
49	Hansen and Bolshan Prospect	Fig. 28		A-23	p. 47-48

Cobol Area (southern portion West Coast gold area)

Map # & Symbol	Mine,prospect or occurrence (examined by this study unless otherwise noted) commodity gold silver (unless otherwise noted)	Location shown	Plate (p)lor fig. No.	Assay table	Discussed text or occurrence table No.(T)
50	South of Mt. Freeburn occurrence				T-9
51	Aksala Prospect				T-9
52	Anderson Prospect				T-9, p.81
53	Flat Top Mtn. Prospect see level occurrence				T-9, p.81
54	Flat Top Mtn. Prospect upper workings				T-9, p.81
55	2235 Foot Peak occurrence				T-9, p.81
56	West side Sister Lake occurrence				T-9
57	Small Island east of Shale Island occurrence				T-9
58	Rough Channel Island occurrence				T-9
59	North-east end of Fords Arm (Leather Neck Claims) occurrence				T-9
60	Northwest of Elk Dove occurrence				T-9
61	Chichagof Star Prospect				T-9
62	South East end of Sisters Lake				T-9
63	Deuce Island occurrence				T-9
64	Island southeast of Deuce Island occurrence				T-9
65	Elaborado Placer Prospect	Fig. B-9		B-9	T-9
66	Falcon Arm Prospect	Fig.46-49		A-40-43	p.77-81
67	North of Cobol Occurrence				T-9
68	Cobol Mine	Pl.10-11		A-37-39	p.73-77
69	North side Island Cove occurrence				T-9

SLOCUM ARM MOLYBDENUM AREA
Moderate Mineral Potential

Map # & Symbol	Mine,prospect or occurrence (examined by this study unless otherwise noted) commodity gold silver (unless otherwise noted)	Location shown	Plate (p)lor fig. No.	Assay table	Discussed text or occurrence table No.(T)
70	Slocum Arm Molybdenum Prospect Lower portion (Mt. Rinehart Moly Lode Claim)		Pl. 12 Fig. 50-51	A-44	p.81-84
71	Slocum Arm Molybdenum Prospect upper portion		Pl. 12	A-44	p.81-84

OTHER OCCURRENCES

Map # & Symbol	Mine,prospect or occurrence (examined by this study unless otherwise noted) commodity gold silver (unless otherwise noted)	Location shown	Plate (p)lor fig. No.	Assay table	Discussed text or occurrence table No.(T)
72	Orange Gulch occurrence, Au, Ag, Zn, Mo		Fig.52-53	A-45-46	p.84-85
73	North of Orange Gulch occurrence, Ag,Mo,Zn				p.85

Plate 2. — West portion of Western Chichagof Island delineating areas of mineral potential and showing faults, geology, mines, prospects and mineral occurrences. (Base from U.S. Geol. Survey I:63,360 Sitka B6, C6, C7 and D7.)