

AMERICAN INDIAN TRIBAL CENSUS TRACT OUTLINE MAP (CENSUS 2000)

42 611940N
121 858714W

42 611940N
121 858714W

LEGEND

SYMBOL	NAME STYLE
☆☆☆☆	INTERNATIONAL
*****	AIR (FEDERAL)
◆◆◆◆◆	Trust Land
◇◇◇◇◇	OTSA / TDSA
●●●●●	AMERICAN INDIAN TRIBAL SUBDIVISION
//////	AIR (State)
◇◇◇◇◇	SDA/SA
//////	STATE (or statistically equivalent entity)
■■■■■	COUNTY (or statistically equivalent entity)
□	Place within Subject Entity
■	Incorporated Place / CDP
□	Place outside of Subject Entity
■	Incorporated Place / CDP
■	Tribal Census Tract¹

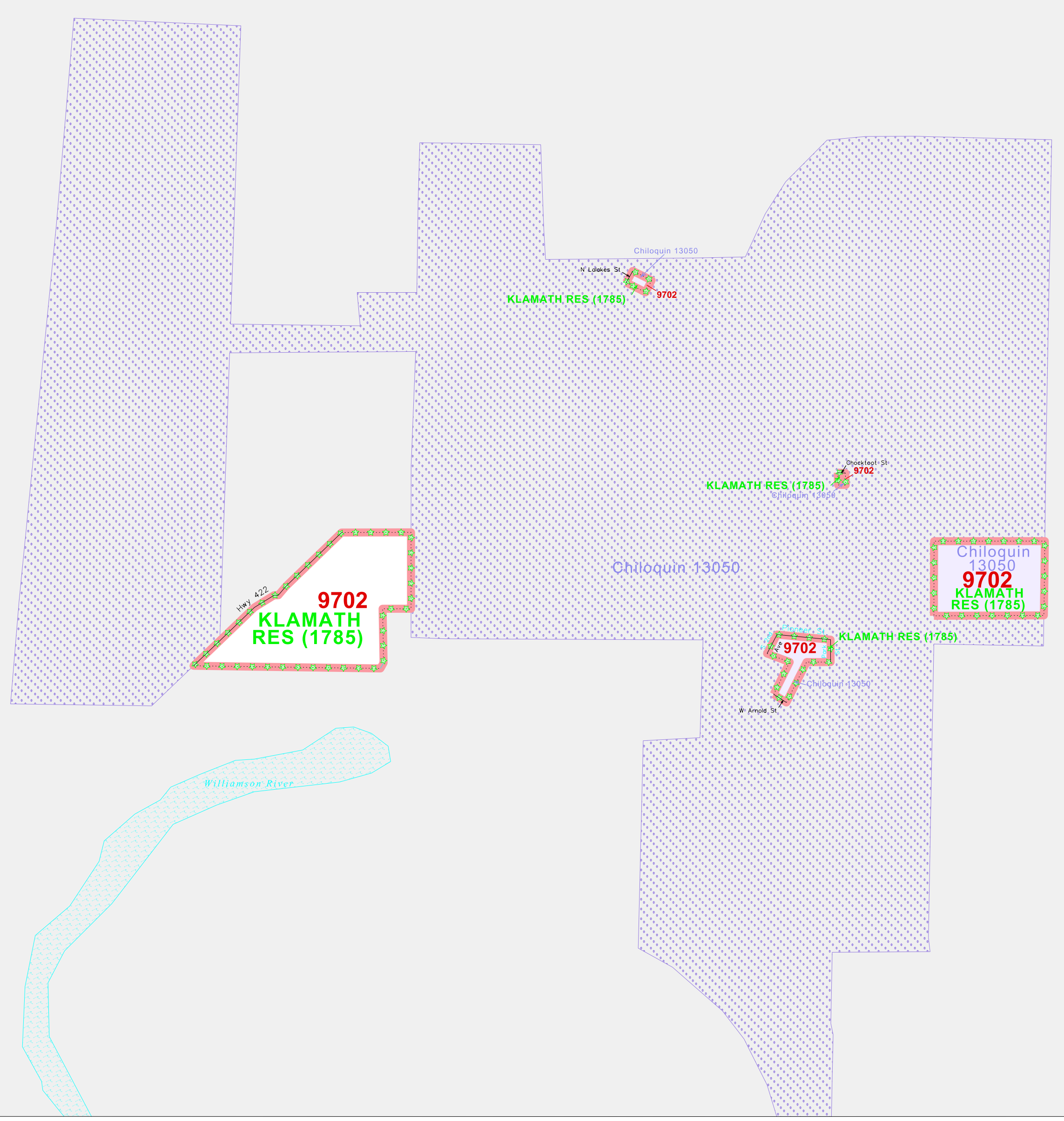
ABBREVIATION REFERENCE: AIR = American Indian Reservation;
Trust Land = Off-Reservation Trust Land; OTSA = Oklahoma Tribal
Statistical Area; TDSA = Tribal Designated Statistical Area;
SDA/SA = State Designated American Indian Statistical Area;
CDP = Census Designated Place

FEATURES

All Roads	Stream/Shoreline
Railroad	Inter-Trust Stream
Pipe/Pump Line	River/Lake
Physical Feature	Glacier
Nonviable Boundary	

Inset Out Area

¹ This map shows tribal census tract boundaries and numbers. A tribal census tract is a type of census tract defined within a federally recognized American Indian reservation or off-reservation trust land for the purpose of providing data based on an American Indian hierarchy rather than by state and county.



Key to Adjacent Sheets

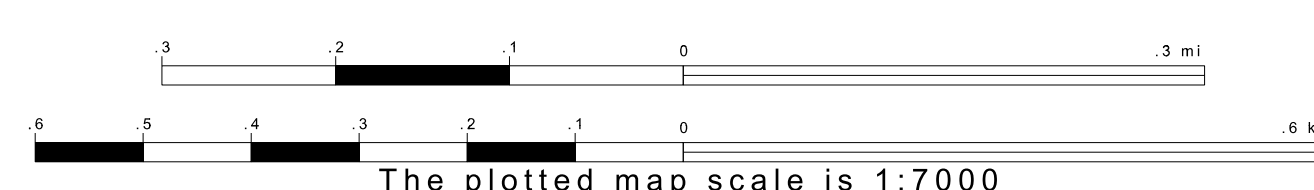
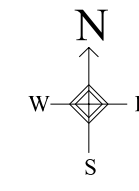
1	2
3	

Sheet Location within Entity

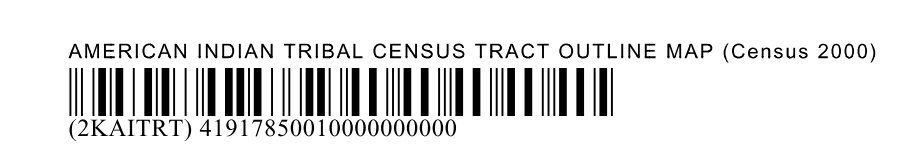
SHEET 1 OF 7 PARENT SHEETS
TOTAL SHEETS: 8 (Index 1; Parent 7; Inset 0)

42 565139N
121 858714W

42 565139N
121 858714W



ENTITY TYPE: American Indian Reservation
NAME: Klamath Reservation (1785)
ST: Oregon



All legal boundaries and names are as of January 1, 2000. The boundaries shown on this map are for Census Bureau statistical data collection and tabulation purposes only; their depiction and designation for statistical purposes does not constitute a determination of jurisdictional authority or rights of ownership or entitlement. Source: U.S. Census Bureau's TIGER database (Census 2000). Projection: State-based Albers Equal Area. U.S. DEPARTMENT OF COMMERCE Economics and Statistics Administration U.S. Census Bureau