

FIGURE 2. TRUCK 16, OLD CATALYST, C2 CYCLE RESULTS

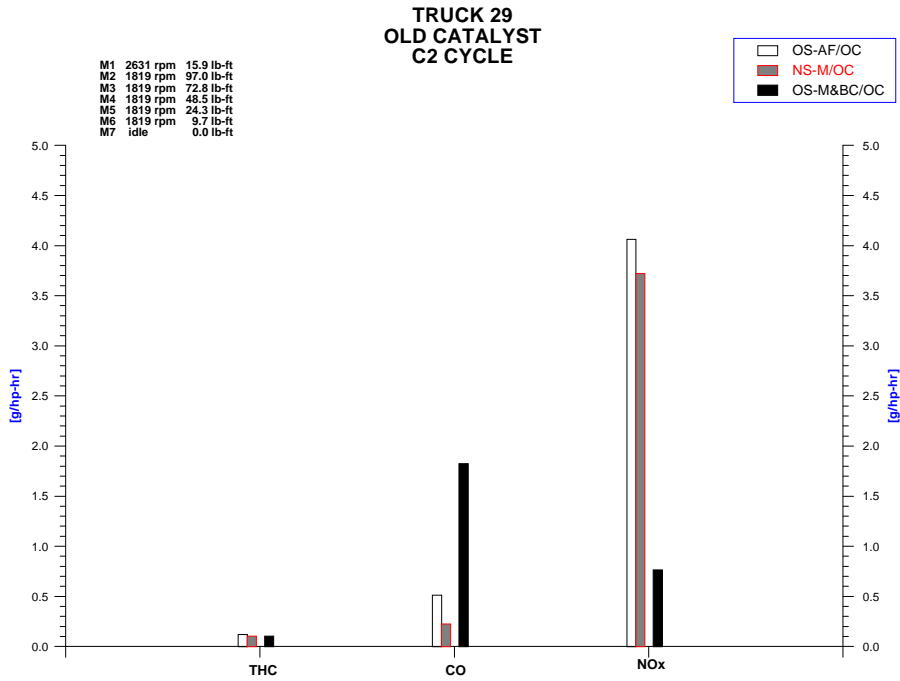


FIGURE 3. TRUCK 29, OLD CATALYST, C2 CYCLE RESULTS

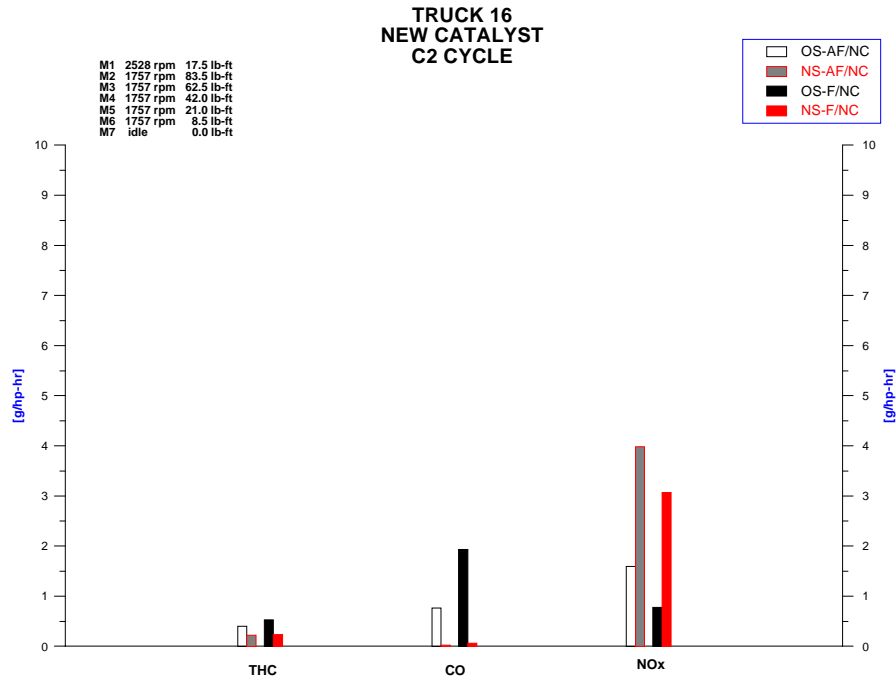


FIGURE 4. TRUCK 16, NEW CATALYST, C2 CYCLE RESULTS

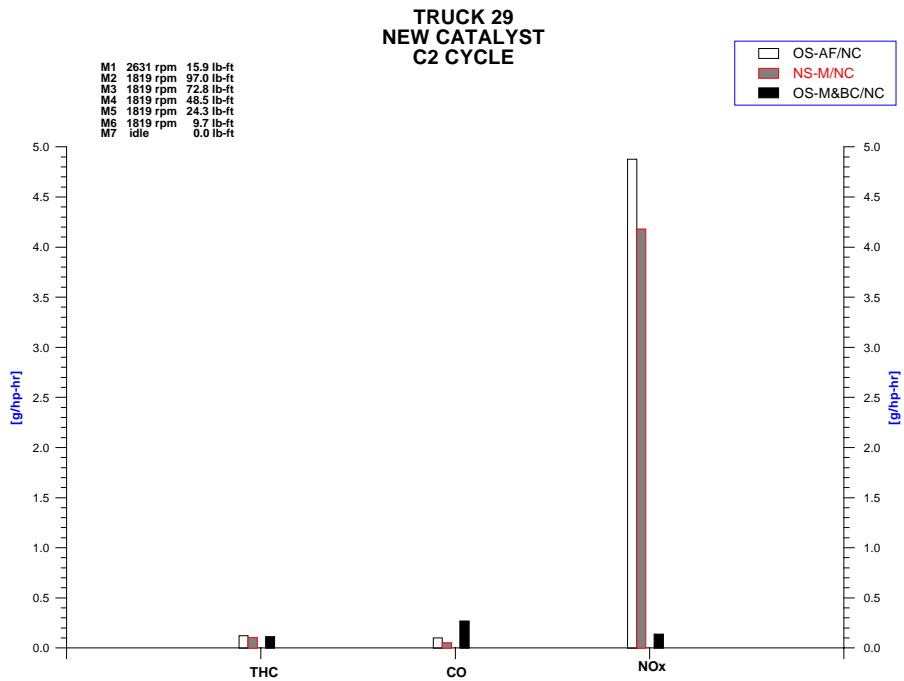


FIGURE 5. TRUCK 29, NEW CATALYST, C2 CYCLE RESULTS

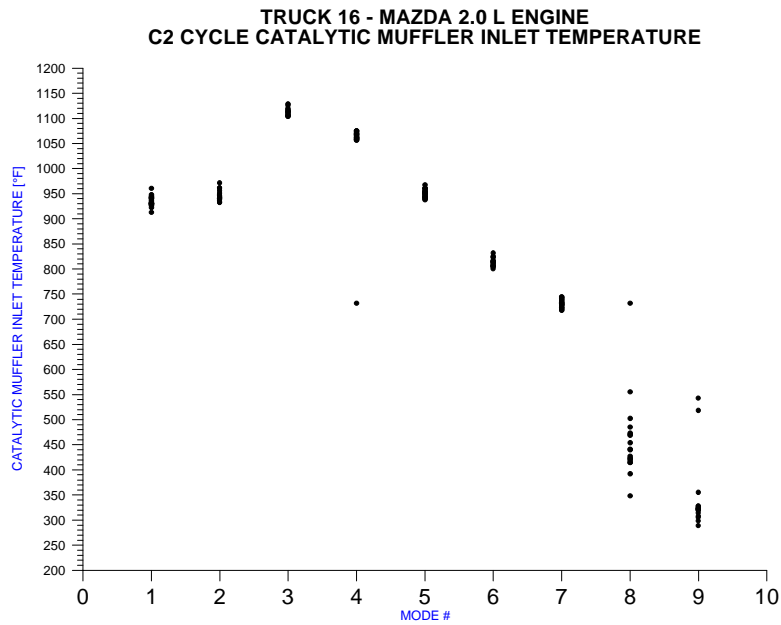


FIGURE 6. TRUCK 16, MAZDA 2.0 L ENGINE, C2 CYCLE CATALYTIC MUFFLER INLET TEMPERATURE RESULTS

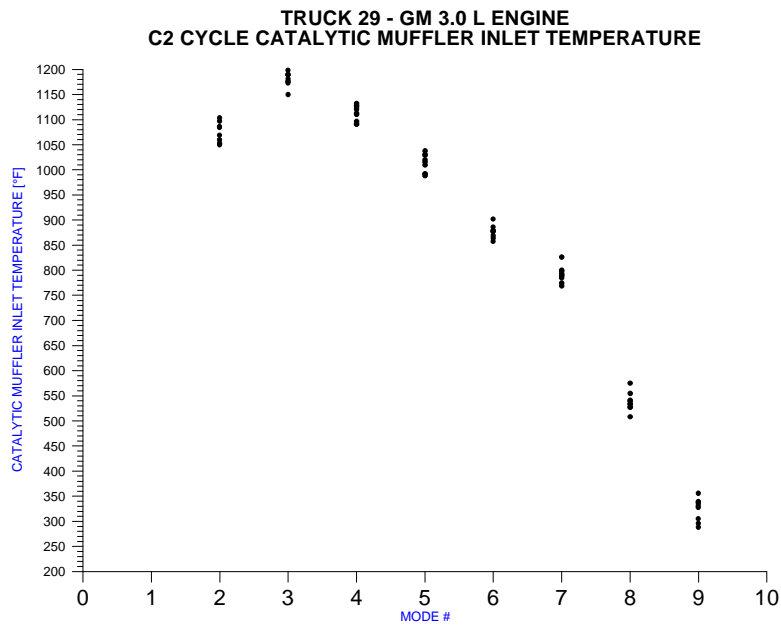


FIGURE 7. TRUCK 29, GM 3.0L ENGINE C2 CYCLE CATALYTIC MUFFLER INLET TEMPERATURE RESULTS

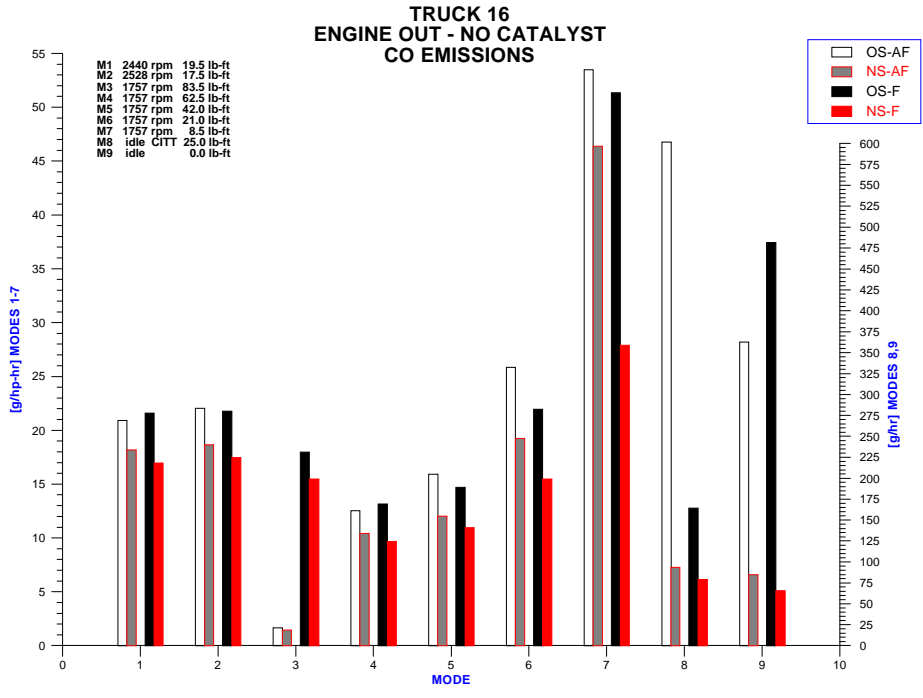


FIGURE 8. TRUCK 16, ENGINE-OUT - NO CATALYST CO EMISSIONS RESULTS

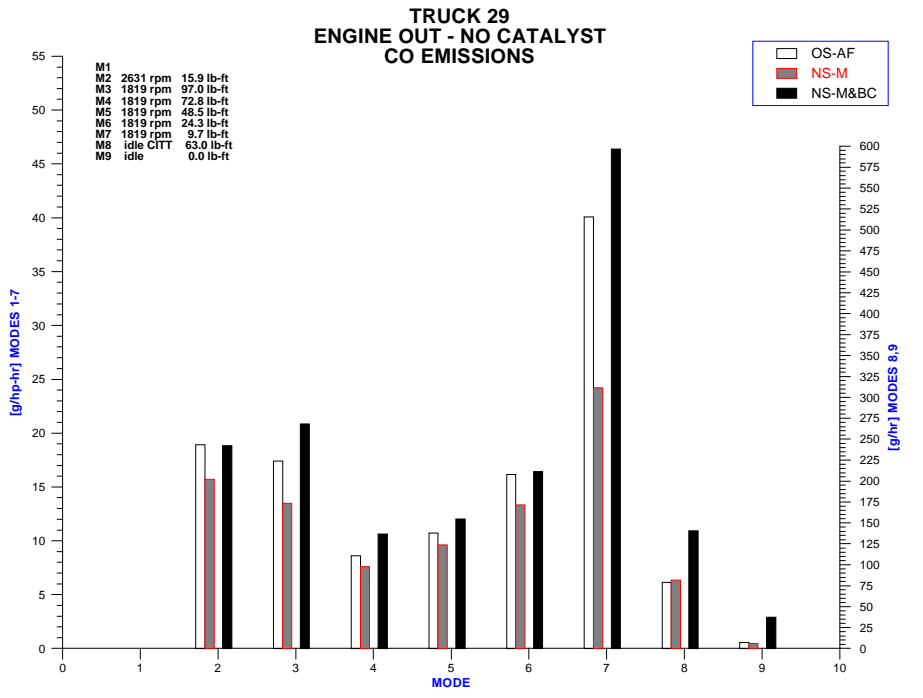
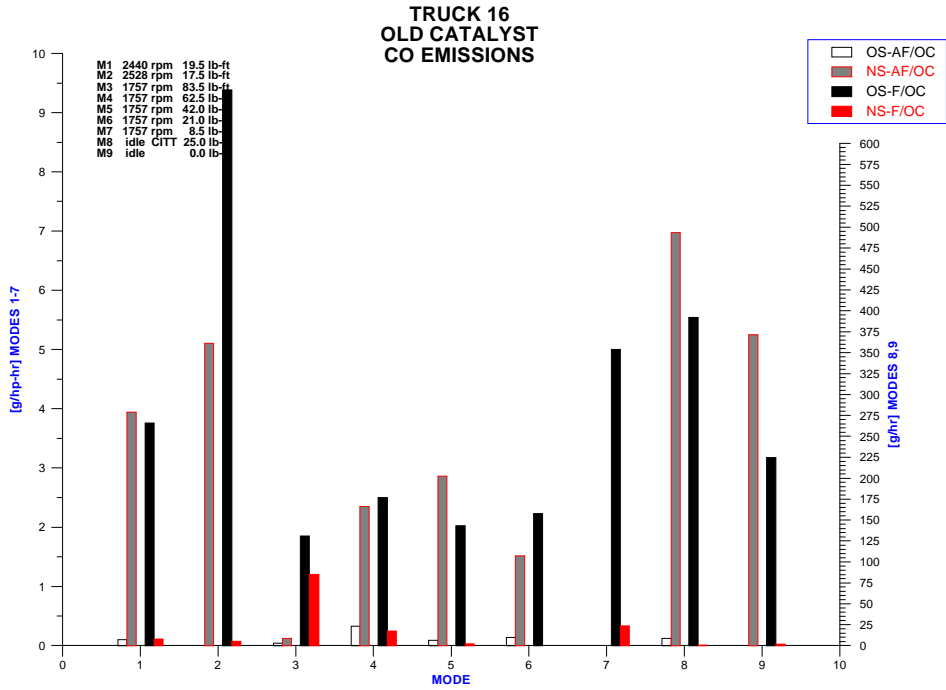
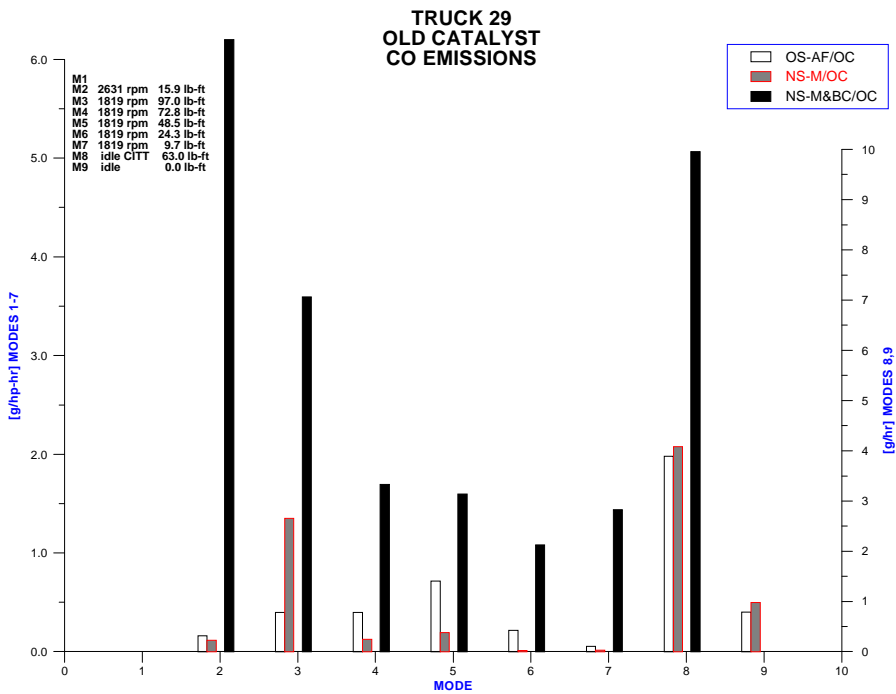


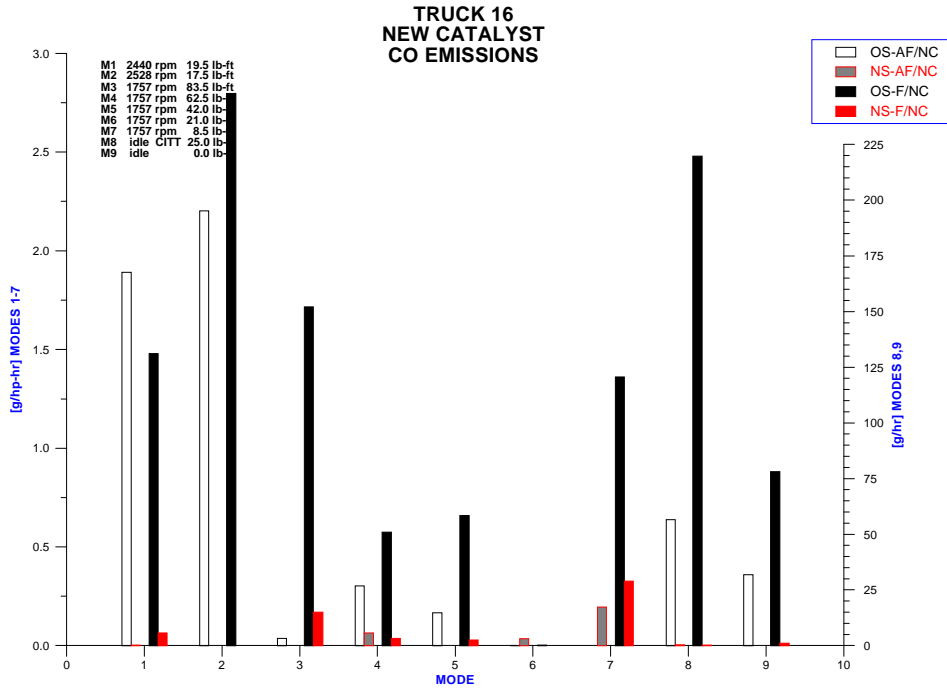
FIGURE 9. TRUCK 29, ENGINE-OUT - NO CATALYST CO EMISSIONS RESULTS



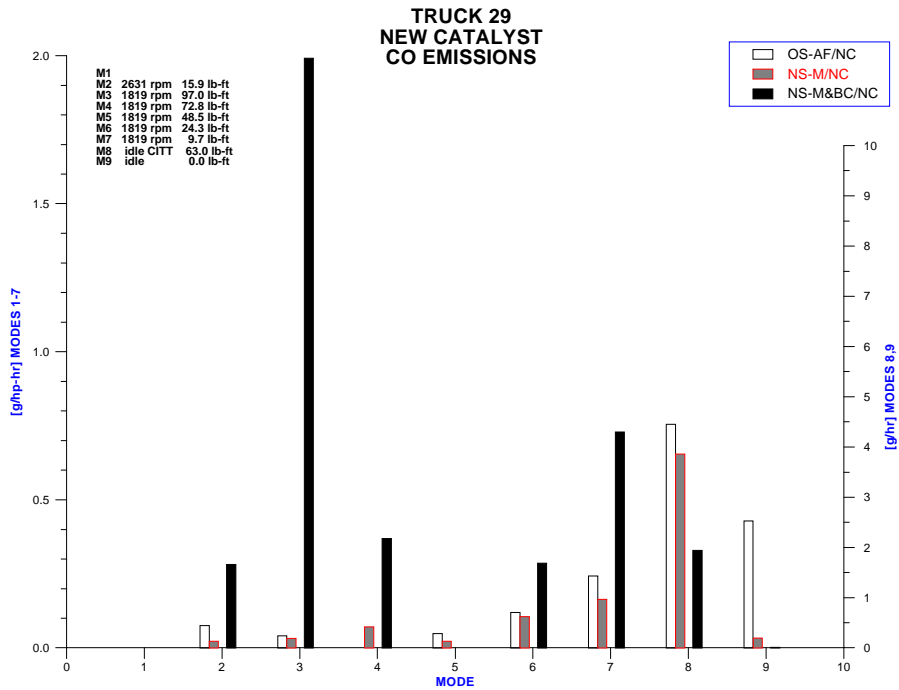
**FIGURE 10. TRUCK 16, OLD CATALYST,
CO EMISSIONS RESULTS**



**FIGURE 11. TRUCK 29, OLD CATALYST,
CO EMISSIONS RESULTS**



**FIGURE 12. TRUCK 16, NEW CATALYST,
CO EMISSIONS RESULTS**



**FIGURE 13. TRUCK 29, NEW CATALYST,
CO EMISSIONS RESULTS**

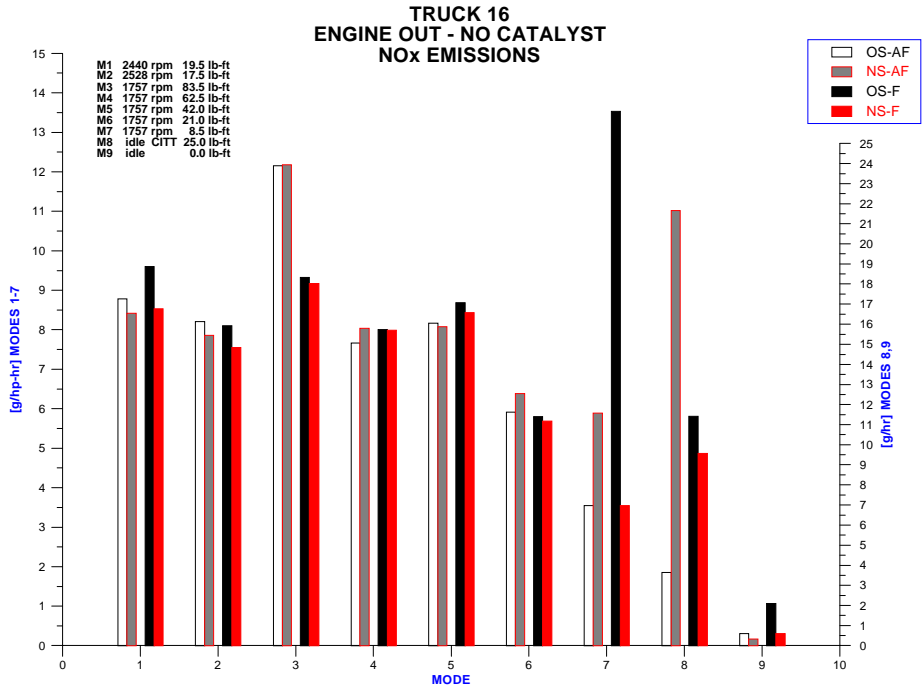


FIGURE 14. TRUCK 16, ENGINE-OUT - NO CATALYST, NO_x EMISSIONS RESULTS

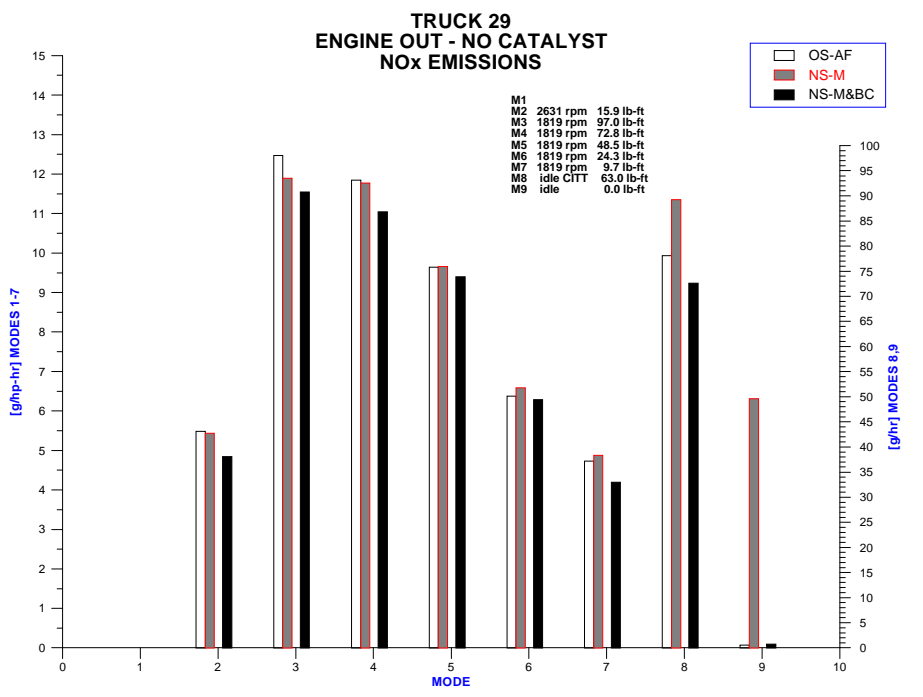


FIGURE 15. TRUCK 29, ENGINE-OUT - NO CATALYST NO_x EMISSIONS RESULTS

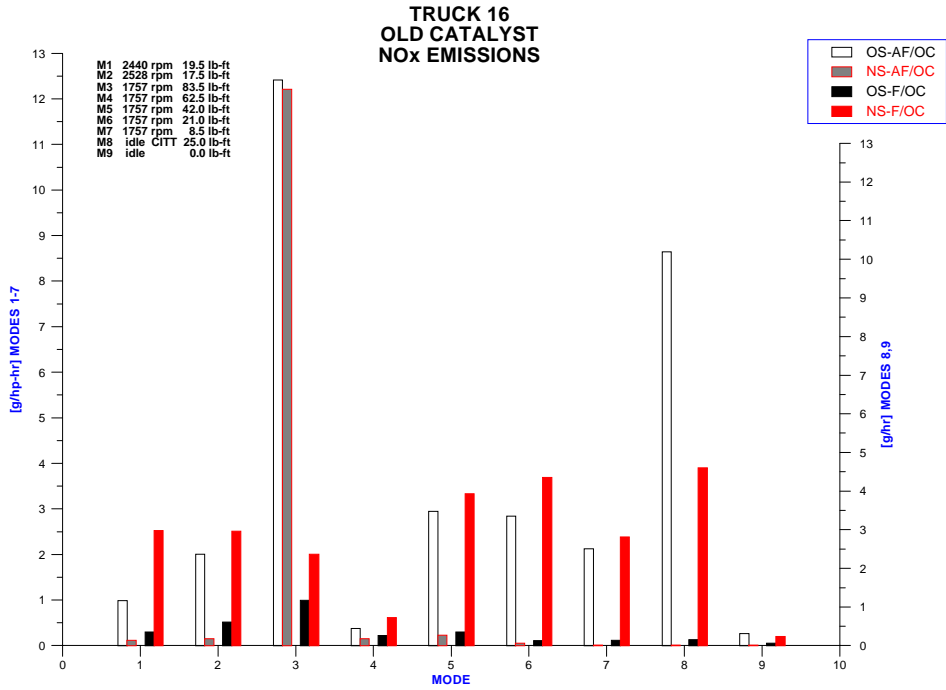


FIGURE 16. TRUCK 16, OLD CATALYST NO_x EMISSIONS RESULTS

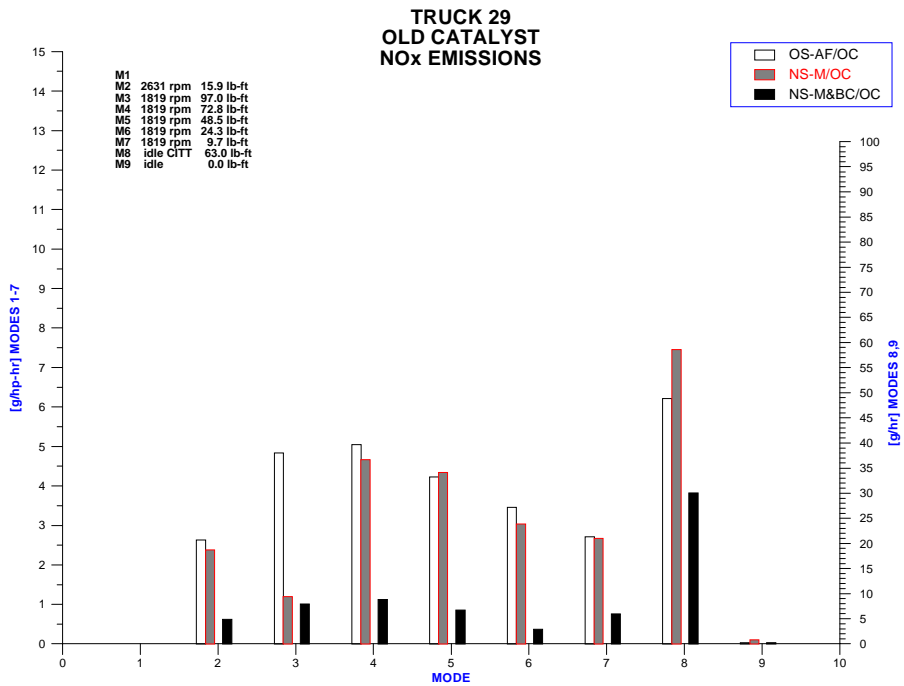


FIGURE 17. TRUCK 29, OLD CATALYST NO_x EMISSIONS RESULTS

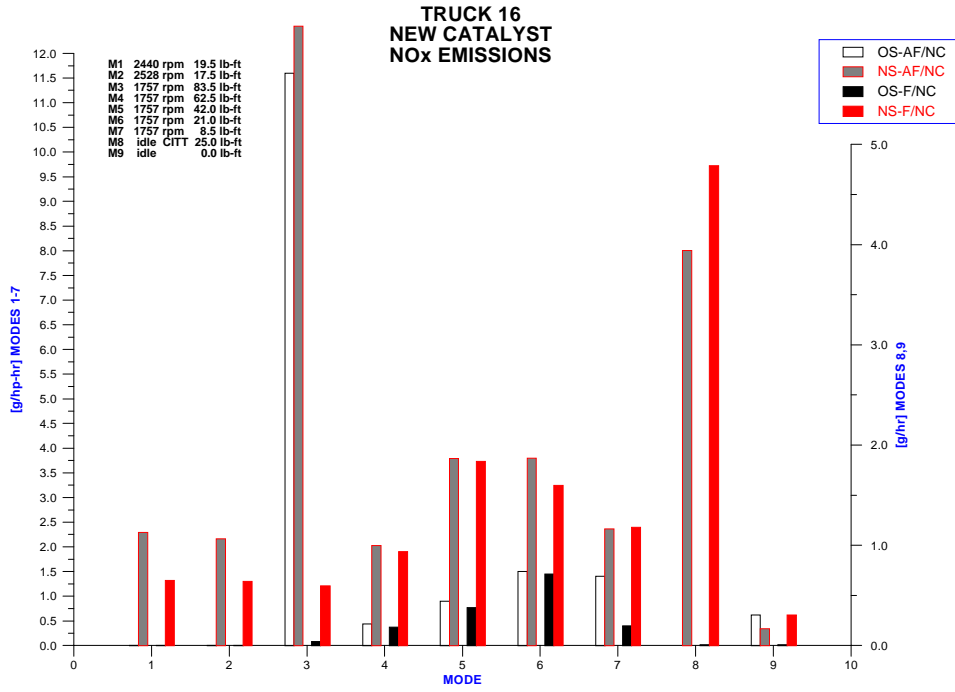


FIGURE 18. TRUCK 16, NEW CATALYST NO_x EMISSIONS RESULTS

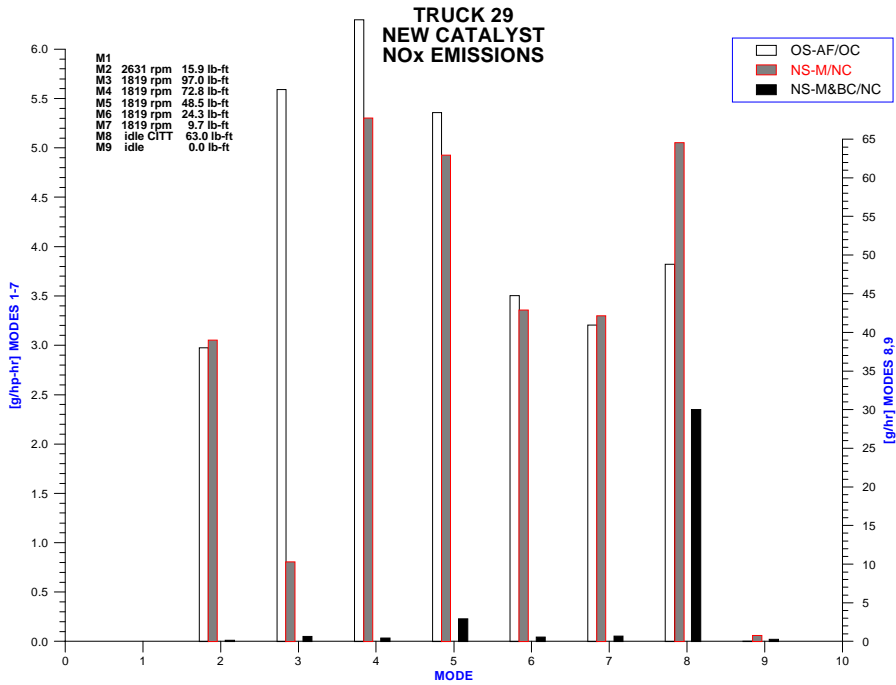
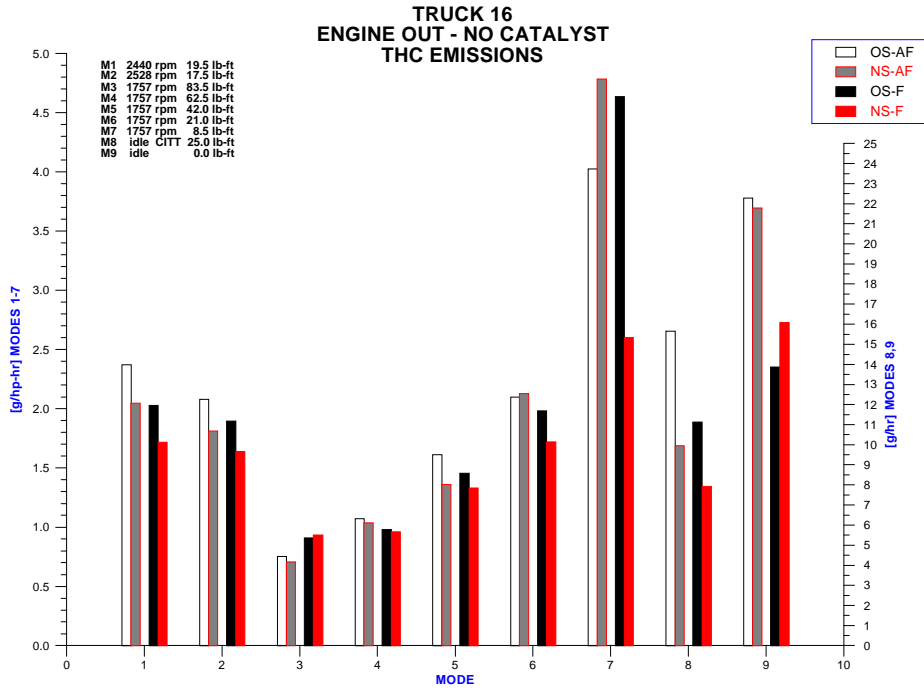
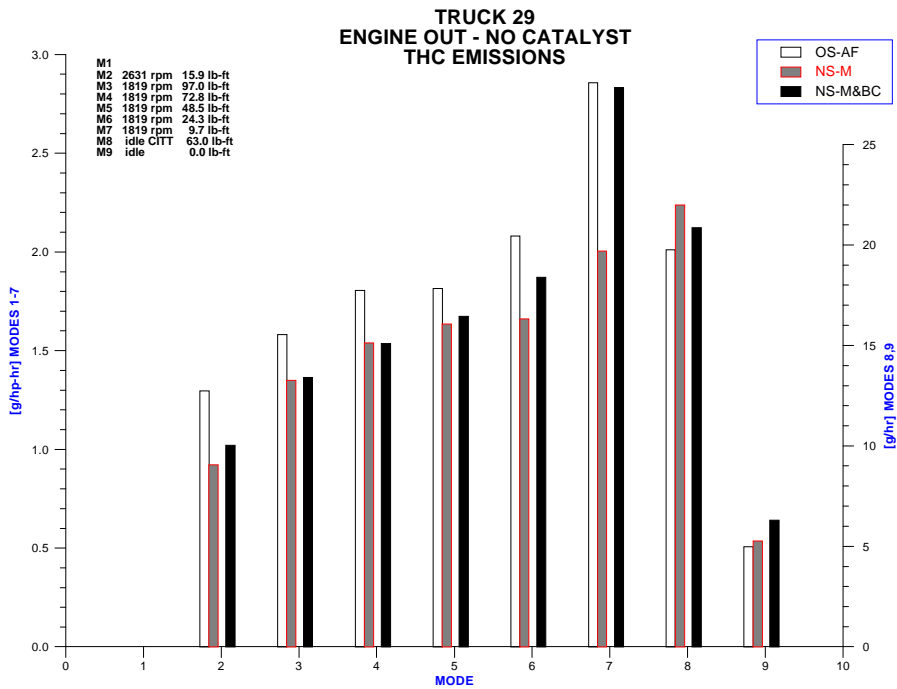


FIGURE 19. TRUCK 29, NEW CATALYST NO_x EMISSIONS RESULTS



**FIGURE 20. TRUCK 16, ENGINE-OUT - NO CATALYST
THC EMISSIONS RESULTS**



**FIGURE 21. TRUCK 29, ENGINE-OUT - NO CATALYST
THC EMISSIONS RESULTS**

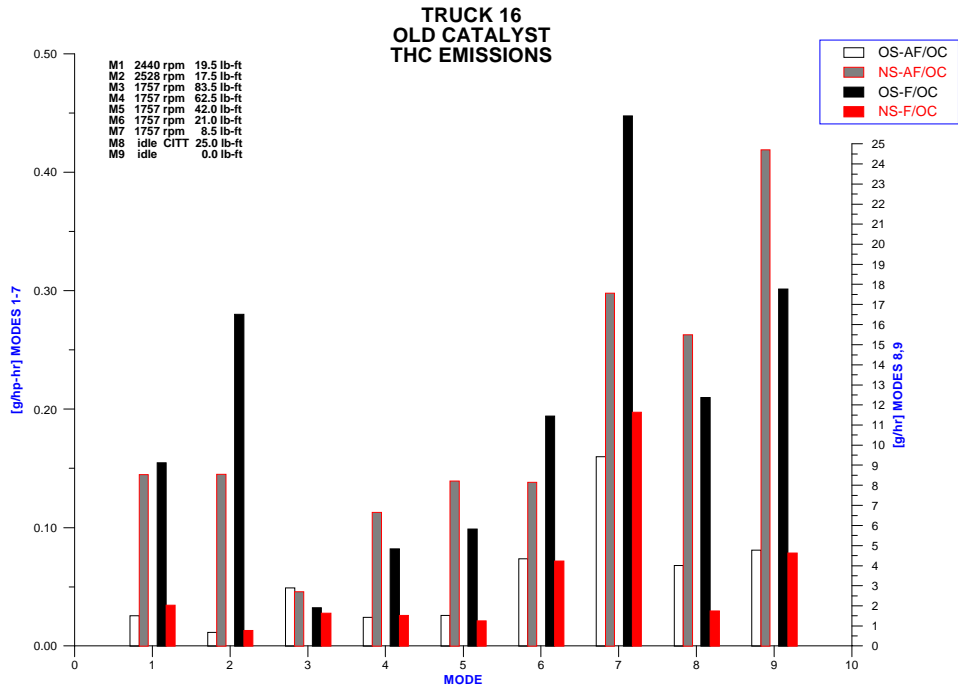


FIGURE 22. TRUCK 16, OLD CATALYST THC EMISSIONS RESULTS

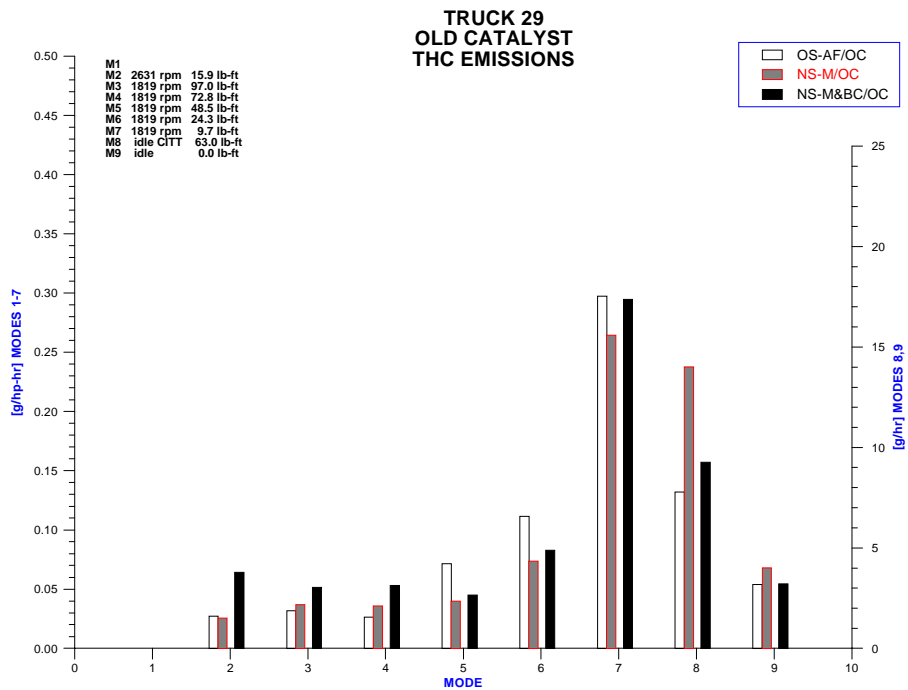


FIGURE 23. TRUCK 29, OLD CATALYST THC EMISSIONS RESULTS

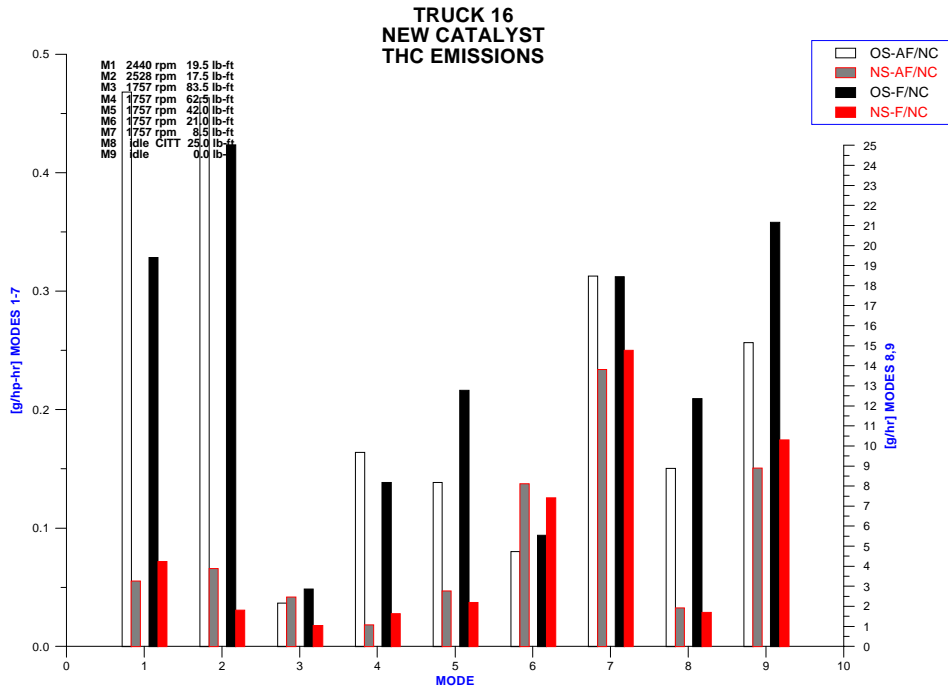


FIGURE 24. TRUCK 16, NEW CATALYST THC EMISSIONS RESULTS

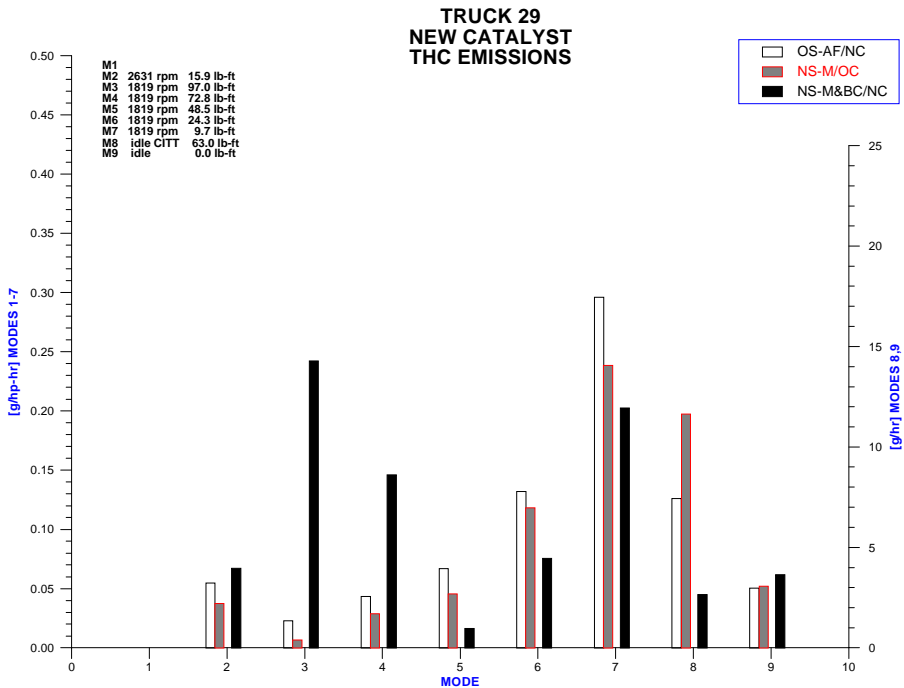


FIGURE 25. TRUCK 29, NEW CATALYST THC EMISSIONS RESULTS

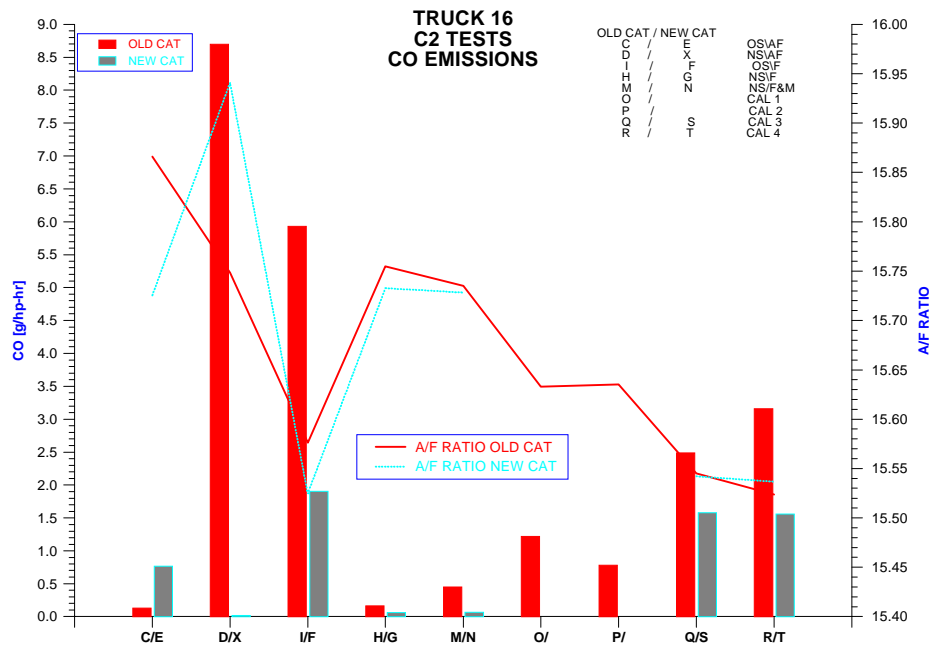


FIGURE 26. TRUCK 16, C2 TESTS, CO EMISSIONS RESULTS

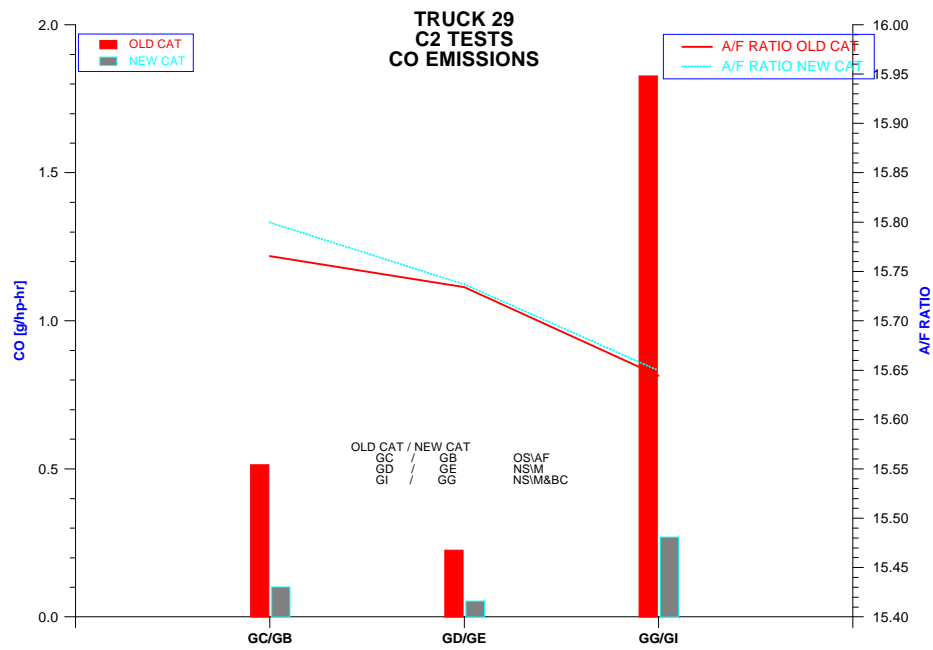


FIGURE 27. TRUCK 29, C2 TESTS, CO EMISSIONS RESULTS

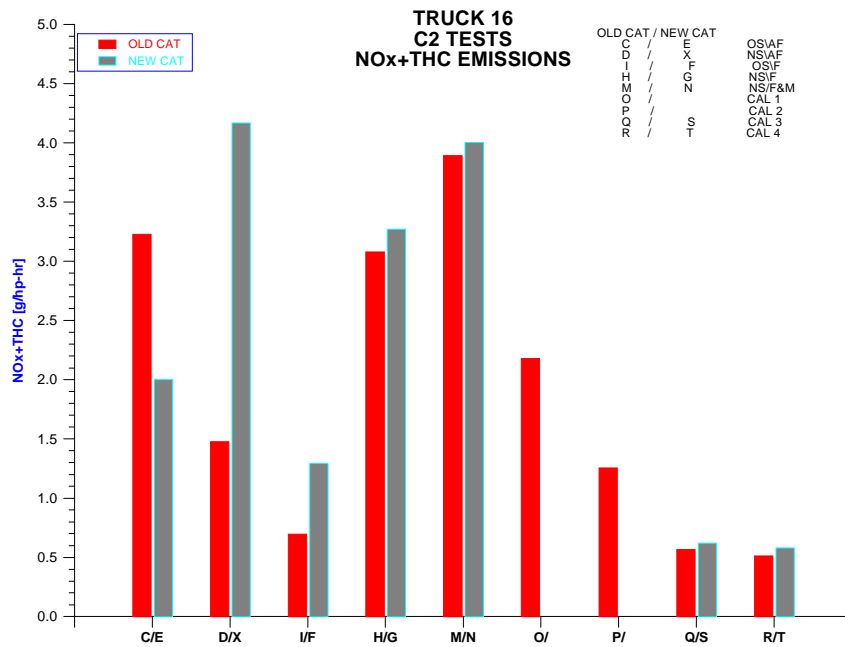


FIGURE 28. TRUCK 16, C2 TESTS, NO_x+THC EMISSIONS RESULTS

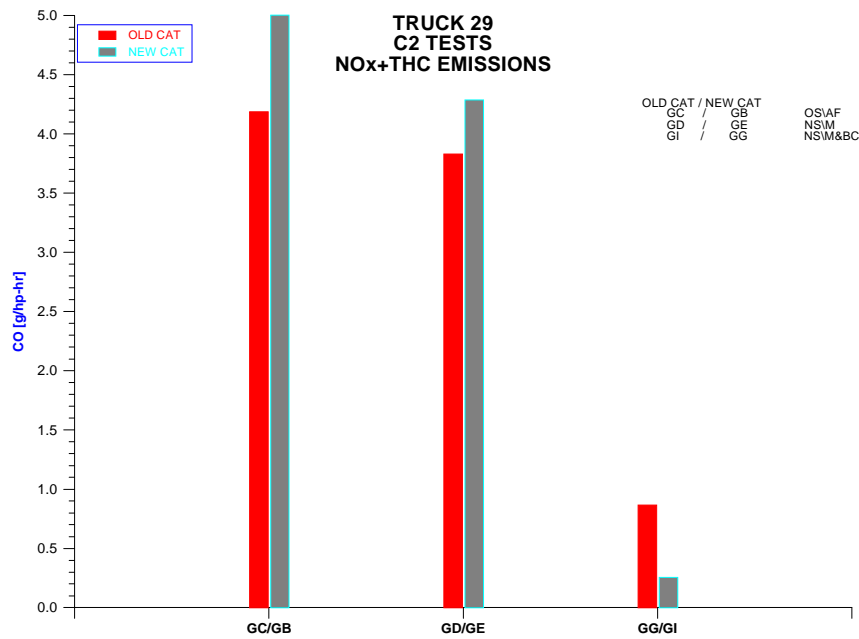


FIGURE 29. TRUCK 29, C2 TESTS, NO_x+THC EMISSIONS RESULTS

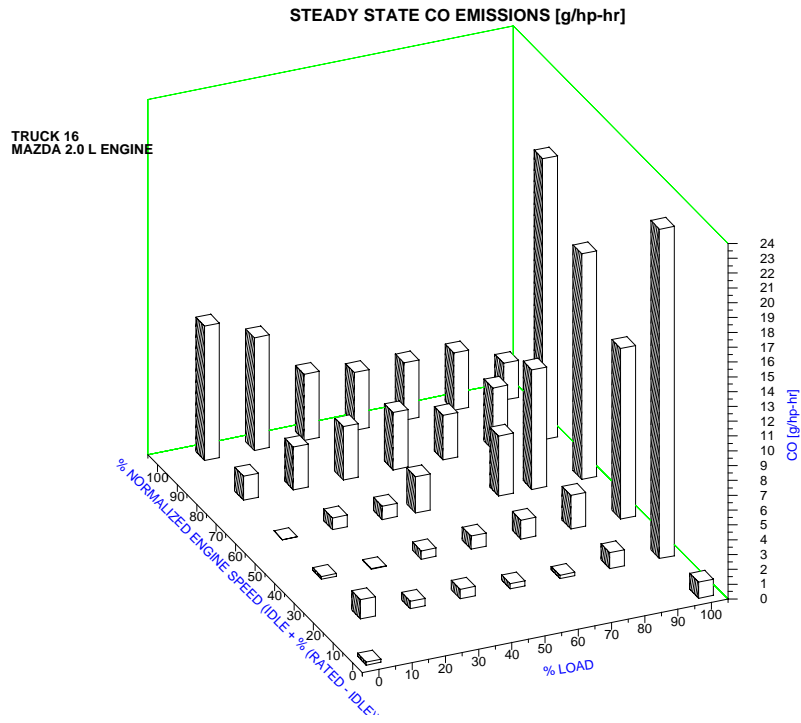


FIGURE 30. TRUCK 16, STEADY-STATE CO EMISSIONS RESULTS OVER NORMALIZED SPEED AND LOAD

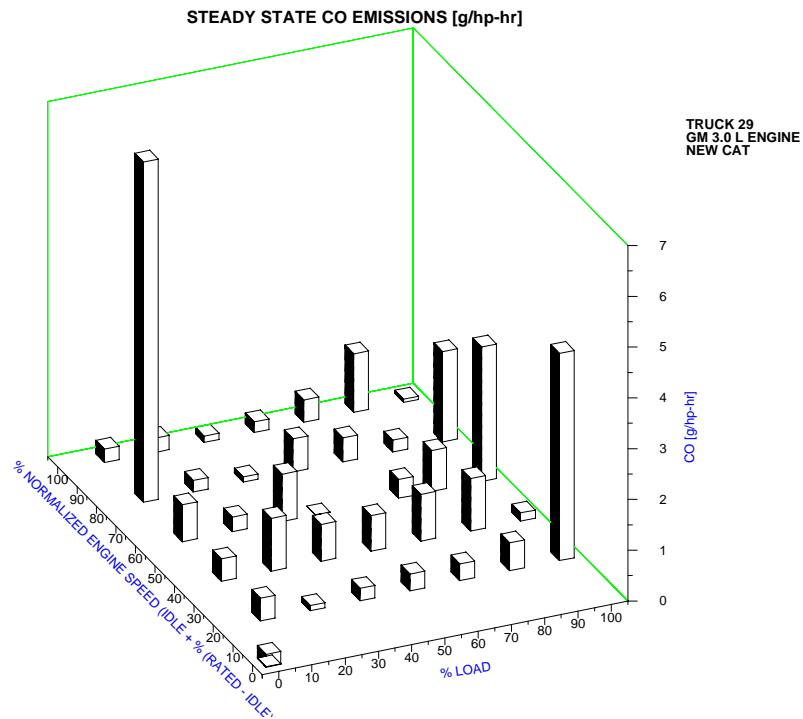


FIGURE 32. TRUCK 29, STEADY-STATE CO EMISSIONS RESULTS OVER NORMALIZED SPEED AND LOAD

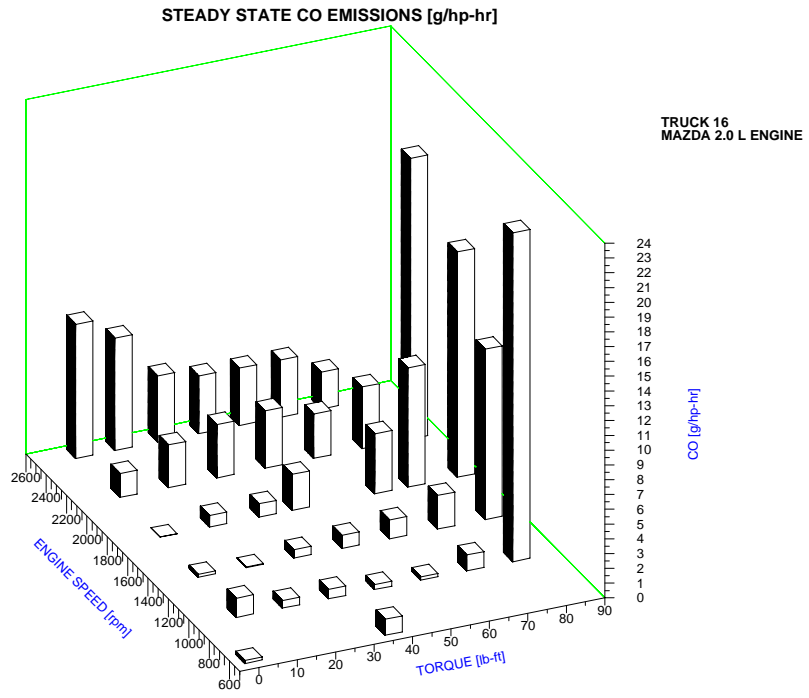


FIGURE 32. TRUCK 16, STEADY-STATE CO EMISSIONS RESULTS

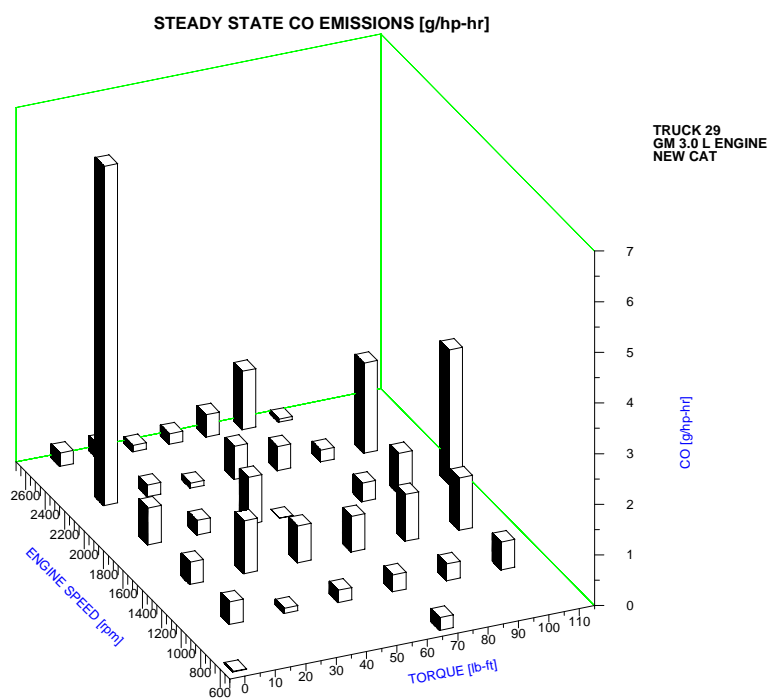


FIGURE 33. TRUCK 29, STEADY-STATE CO EMISSIONS RESULTS

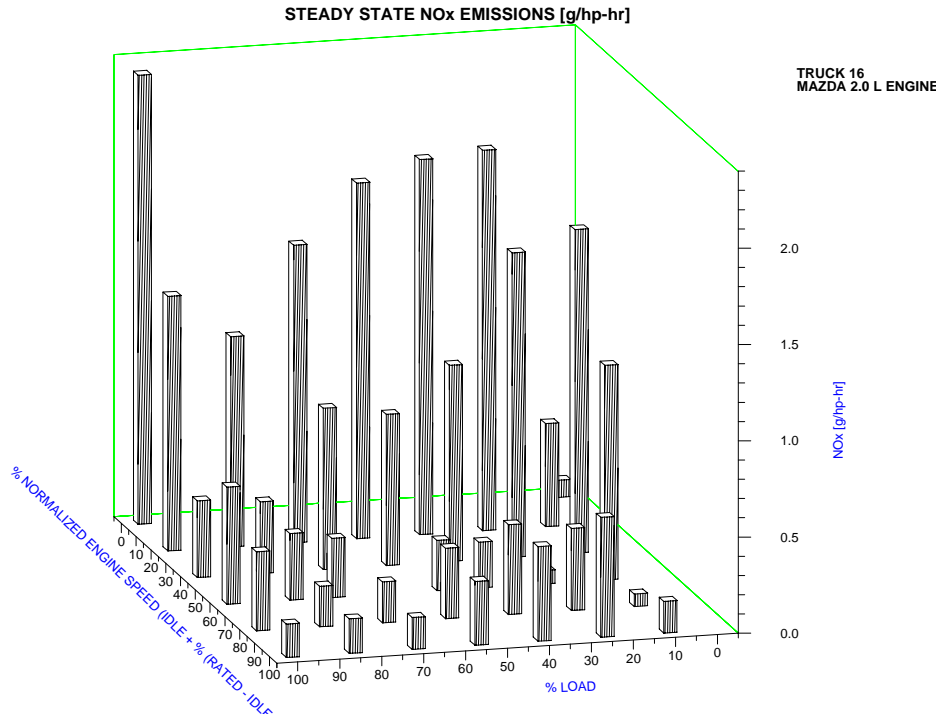


FIGURE 34. TRUCK 16, STEADY-STATE NO_x EMISSIONS RESULTS OVER NORMALIZED SPEED AND LOAD

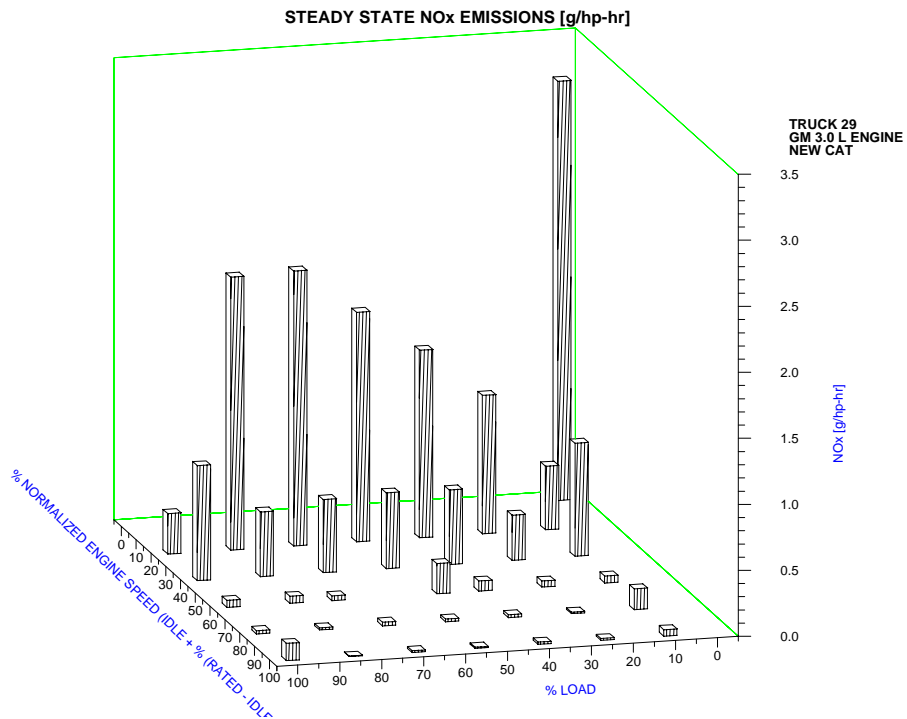


FIGURE 35. TRUCK 29, STEADY-STATE NO_x EMISSIONS RESULTS OVER NORMALIZED SPEED AND LOAD

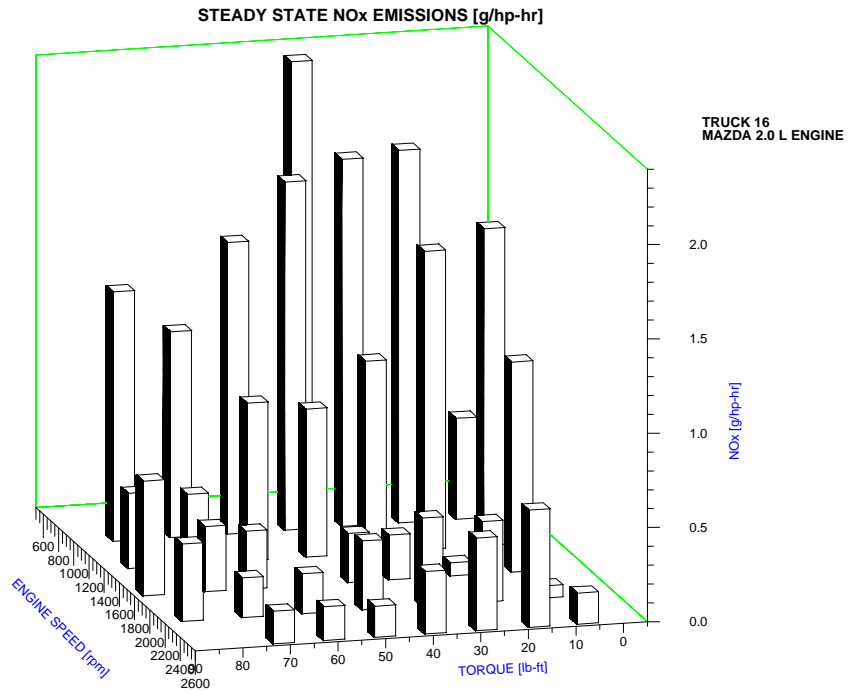


FIGURE 36. TRUCK 16, STEADY-STATE NO_x EMISSIONS RESULTS

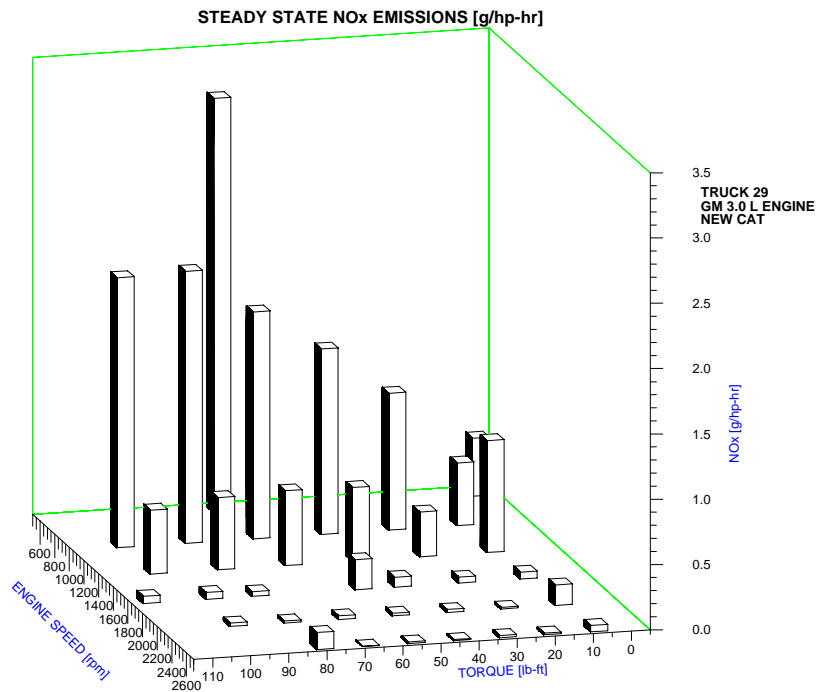


FIGURE 37. TRUCK 29, STEADY-STATE NO_x EMISSIONS RESULTS

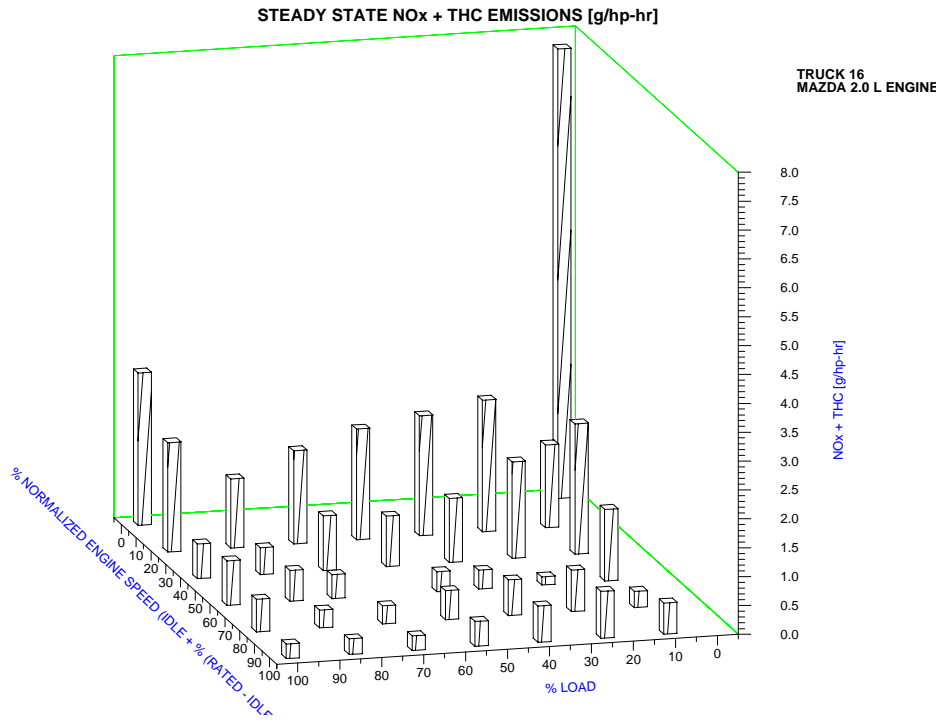


FIGURE 38. TRUCK 16, STEADY-STATE NO_x+THC EMISSIONS RESULTS OVER NORMALIZED SPEED AND LOAD

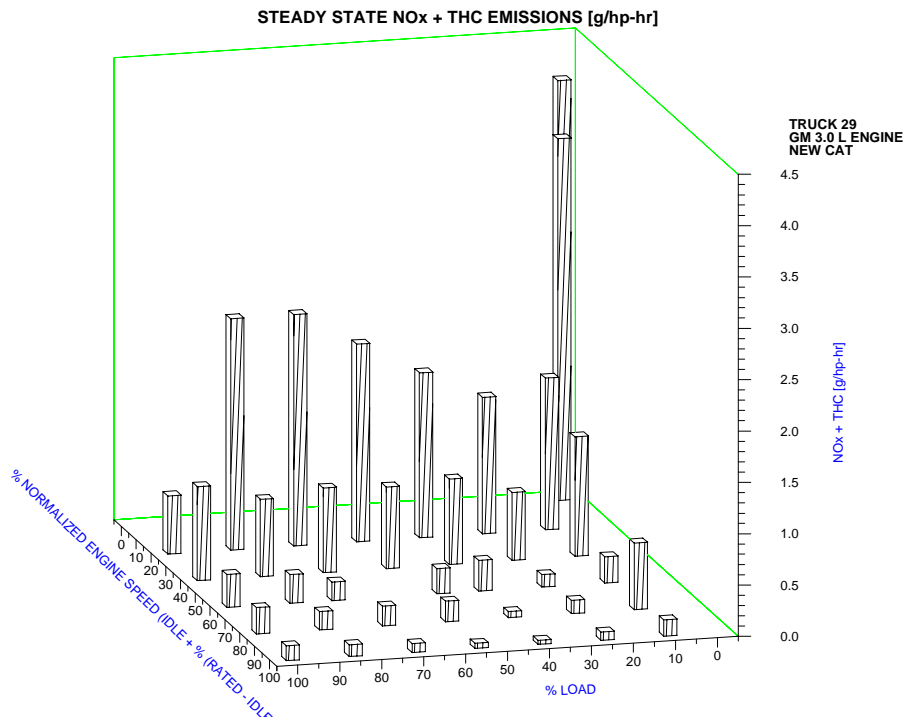


FIGURE 39. TRUCK 29, STEADY-STATE NO_x+THC EMISSIONS RESULTS OVER NORMALIZED SPEED AND LOAD

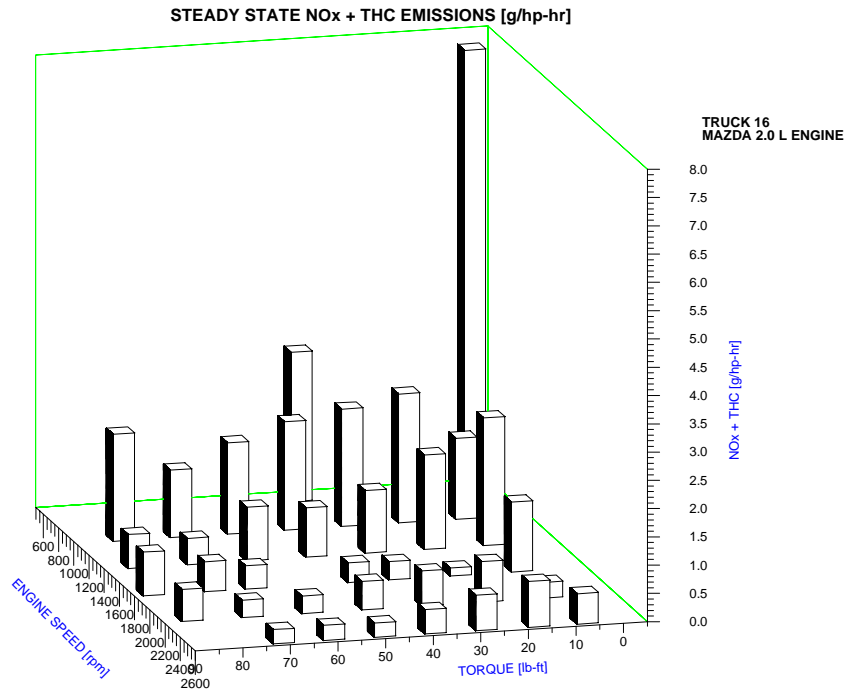


FIGURE 40. TRUCK 16, STEADY-STATE NO_x+THC EMISSIONS RESULTS

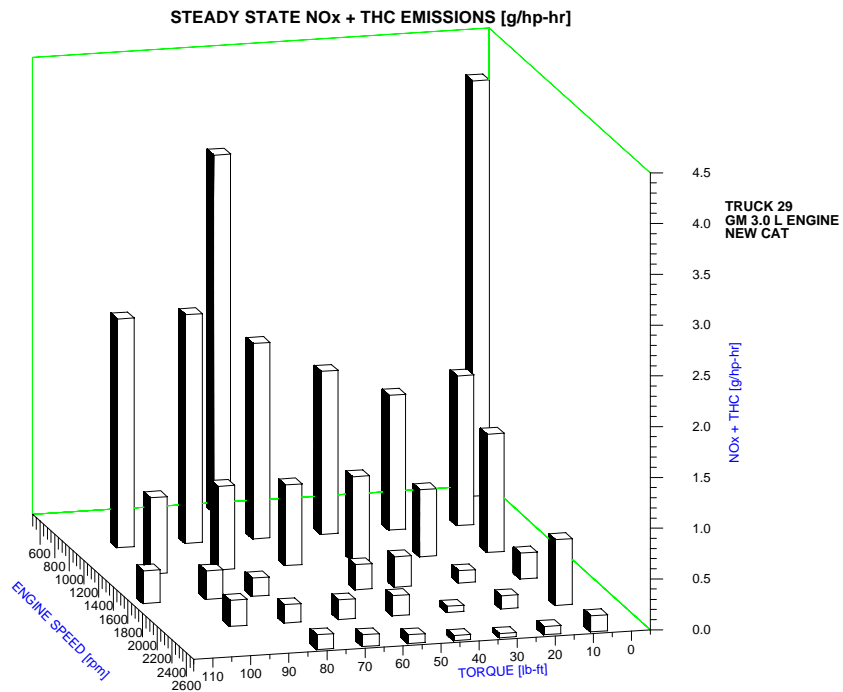


FIGURE 41. TRUCK 29, STEADY-STATE NO_x+THC EMISSIONS RESULTS