

ATTACHMENT F. REFERENCE DRAWINGS

F-1. Canal Station 313+00 to Station 576+81.5; Specification No. 678 (four drawings)

F-2. Canal Station 721+35 to Station 804+74.35 and Station 942+00 to Station 1120+00; Specification No.729 (five drawings)

F-3. Canal Station 1120+00 to Station 1595+00; Specification No.748 (three drawings)

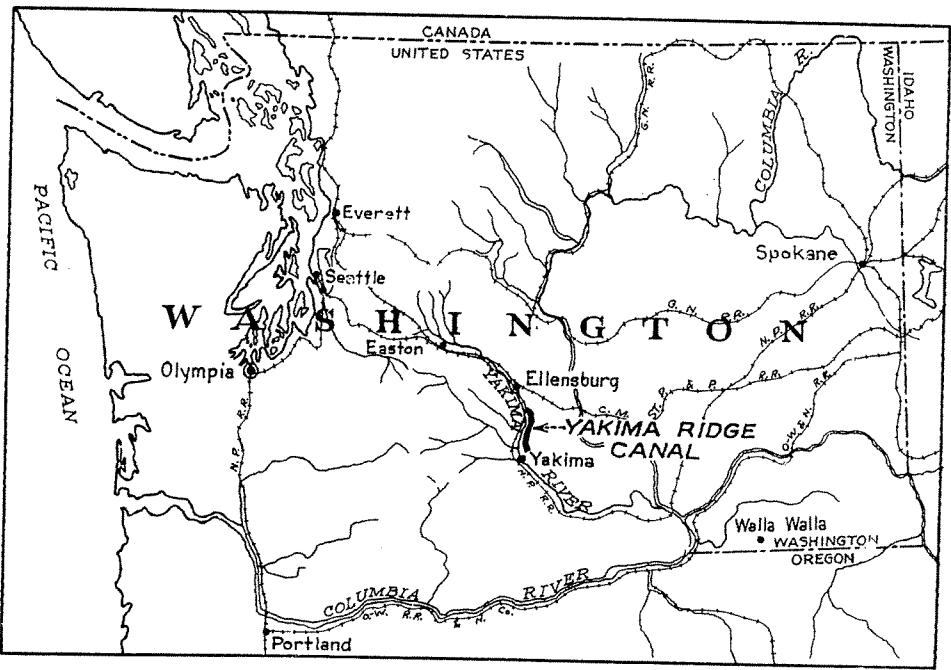
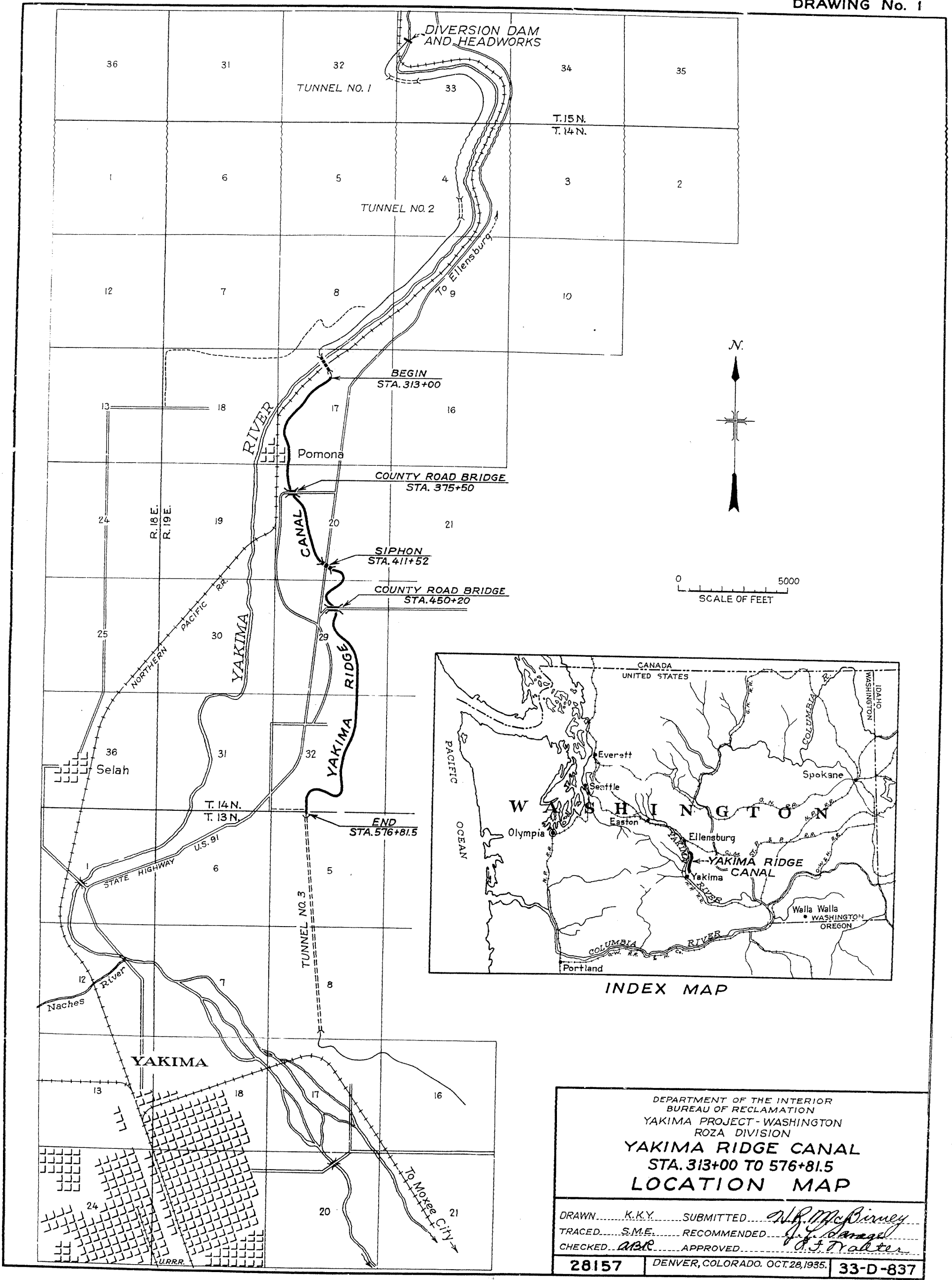
F-4. Tunnels No. 1 and No. 3 (four drawings)

F-5. Pumping Plants (four drawings)

F-6. Miscellaneous Structures and Bridges (four drawings)

F-1. Canal Station 313+00 to Station 576+81.5; Specification No. 678

- 33-D-837 — Yakima Ridge Canal, Sta. 313+00 to 576+81.5, Location Map
- 33-D-838 — Yakima Ridge Canal, Sta. 313+00 to 576+81.5, Profile and Sections
- 33-D-850 — Yakima Ridge Canal, 12" Concrete Pipe Turnout –Lined Section
- 33-D-851 — Yakima Ridge Canal, 12" Concrete Pipe Turnout – Unlined Section

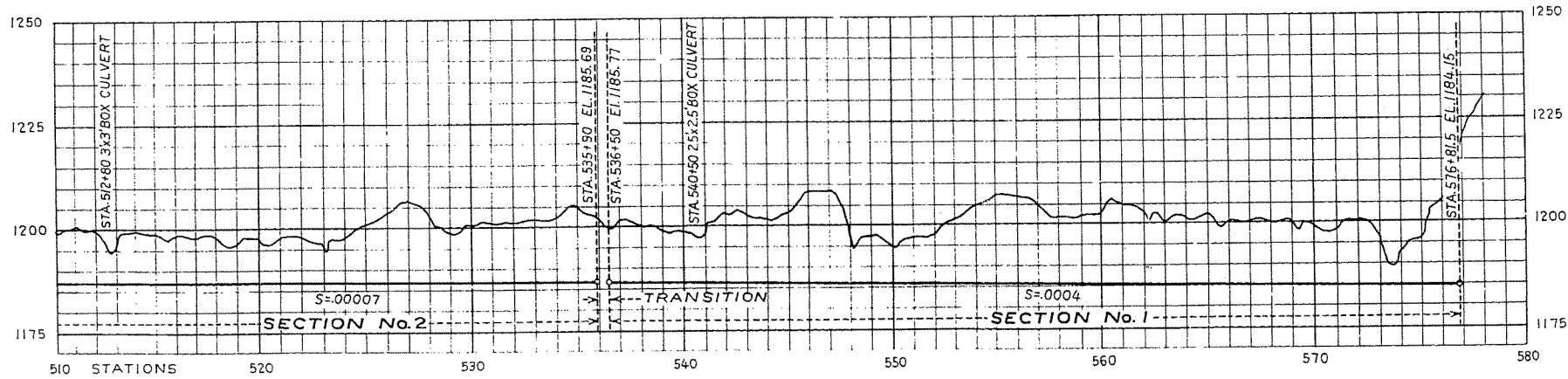
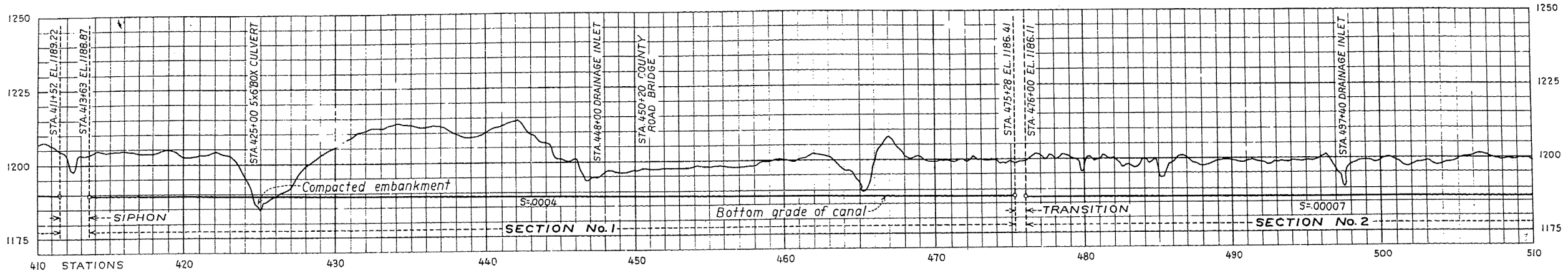
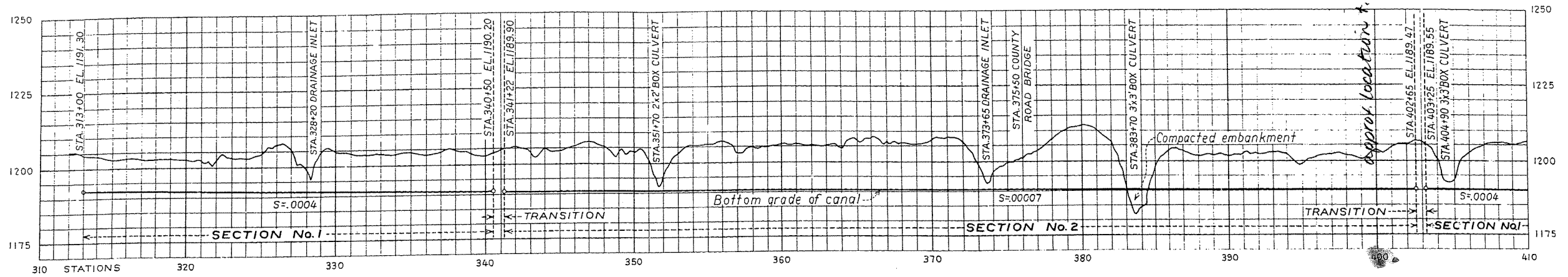


INDEX MAP

DEPARTMENT OF THE INTERIOR
 BUREAU OF RECLAMATION
 YAKIMA PROJECT - WASHINGTON
 ROZA DIVISION
YAKIMA RIDGE CANAL
 STA. 313+00 TO 576+81.5
LOCATION MAP

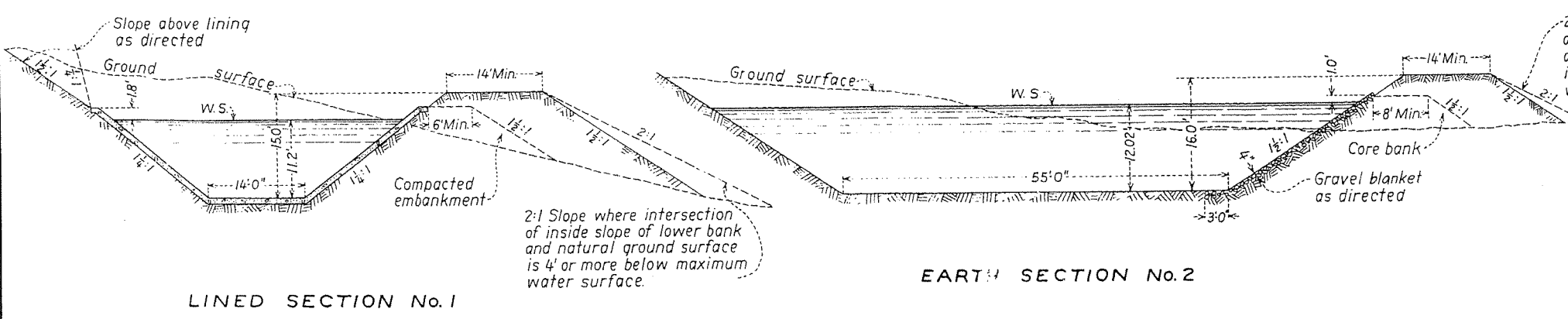
DRAWN.....K.K.Y..... SUBMITTED.....*W.H. McBirney*
 TRACED.....S.M.E..... RECOMMENDED.....*J. J. Dralton*
 CHECKED.....*ABR*..... APPROVED.....

28157 DENVER, COLORADO. OCT. 28, 1935. **33-D-837**



HYDRAULIC PROPERTIES

SECTION	A	V	Q	r	n	S
Lined section No.1	313.60	7.02	2201	6.29	.014	.0004
Earth section No.2	877.82	2.51	2203	8.93	.0225	.00007



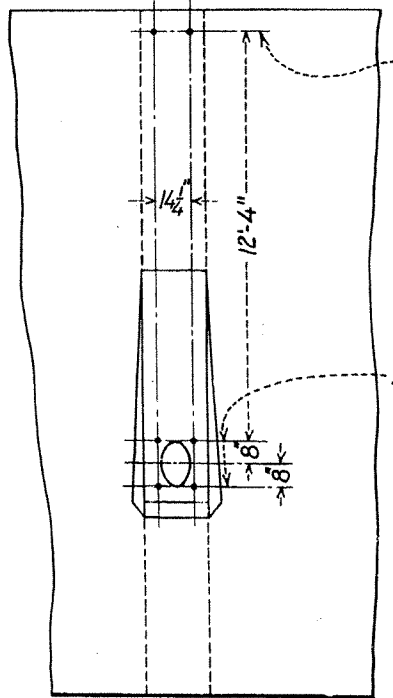
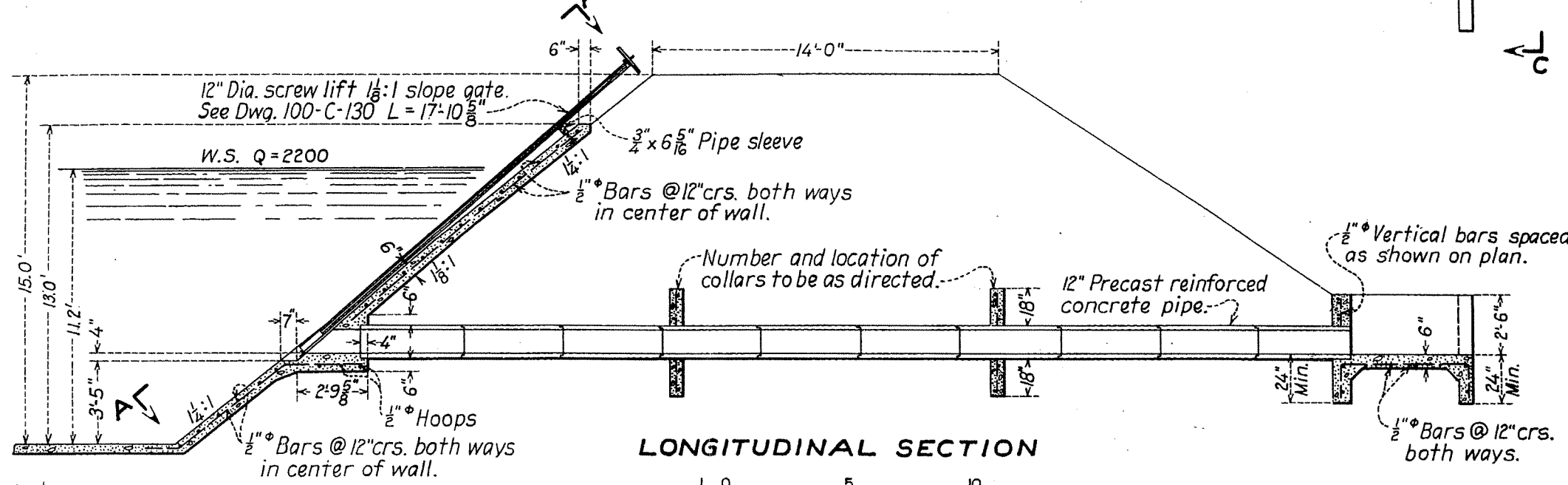
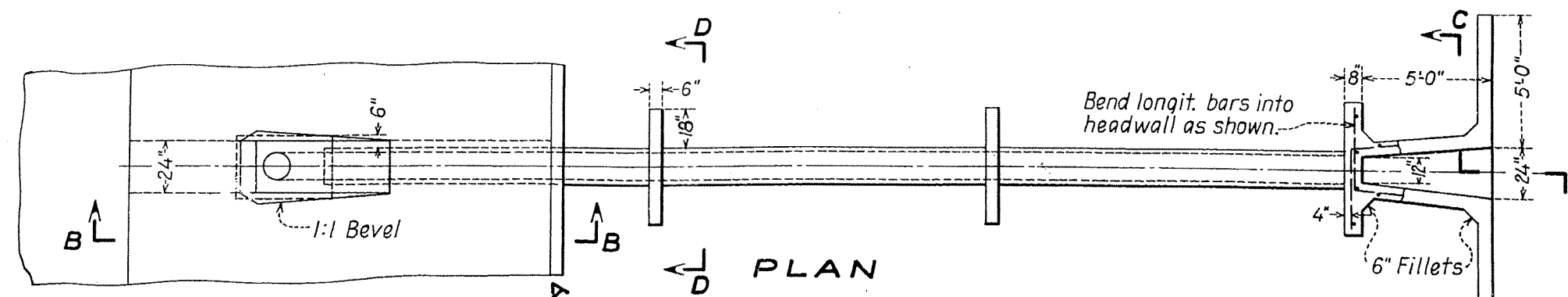
DEPARTMENT OF THE INTERIOR
BUREAU OF RECLAMATION
YAKIMA PROJECT - WASHINGTON
ROZA DIVISION

YAKIMA RIDGE CANAL - STA. 313+00 TO STA. 576+81.5
PROFILE AND SECTIONS

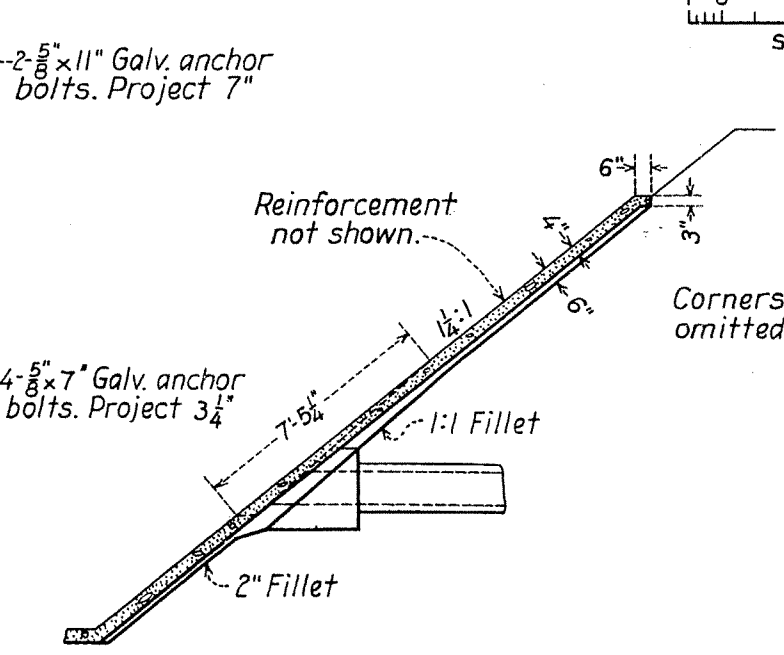
DRAWN... K.K.Y. SUBMITTED... *J.R. McHenry*
TRACED... C.J.R. RECOMMENDED... *J.R. Lange*
CHECKED... *ABR* APPROVED... *A.F. Walter*

28158 DENVER, COLORADO FEB. 28, 1936 33-D-838

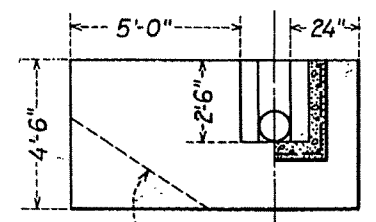
2 1/4 x 29"



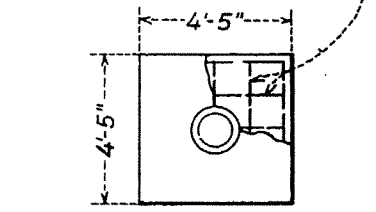
SECTION A-A



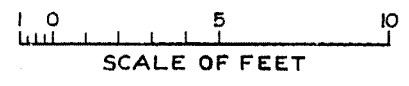
SECTION B-B



SECTION C-C
1/2" Bars @ 12" crs. both ways
in center of collar.



SECTION D-D



ESTIMATED QUANTITIES

Concrete	4 Cu. Yds.
Reinforcement steel	250 Lbs.
Gate and gate hoist	360 Lbs.
12" Precast concrete pipe	40 Lin. Ft.

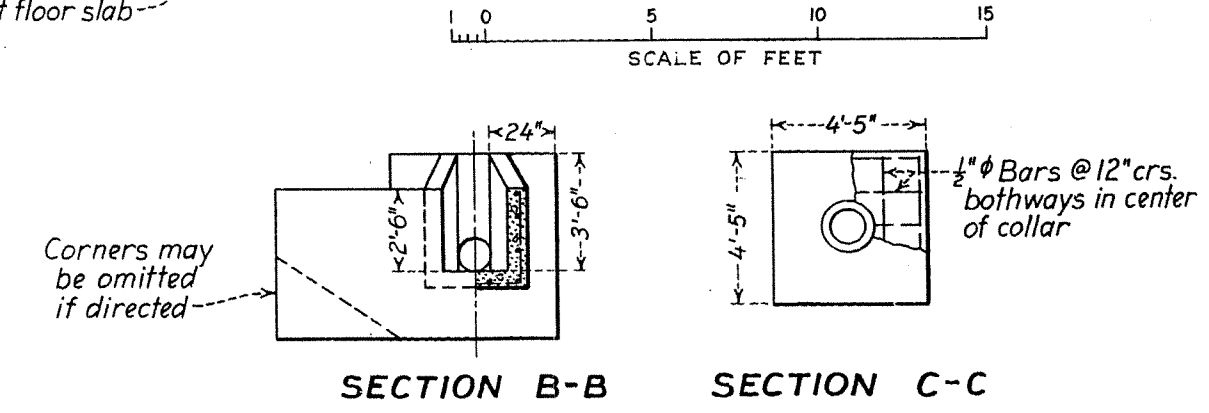
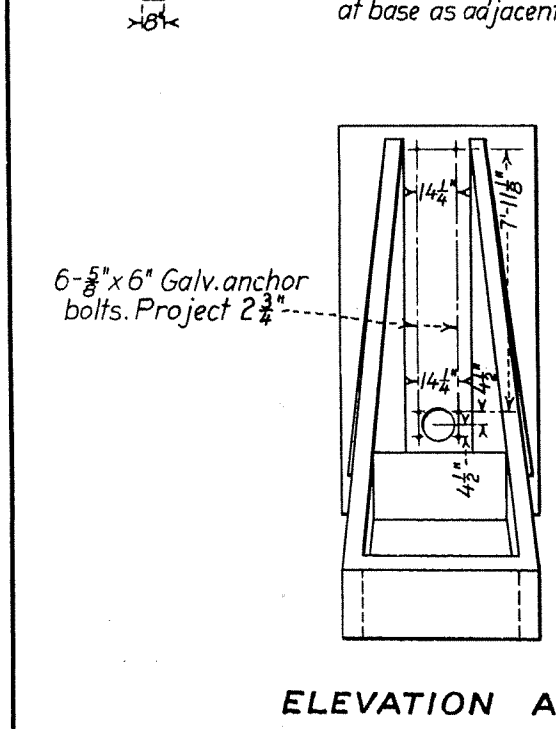
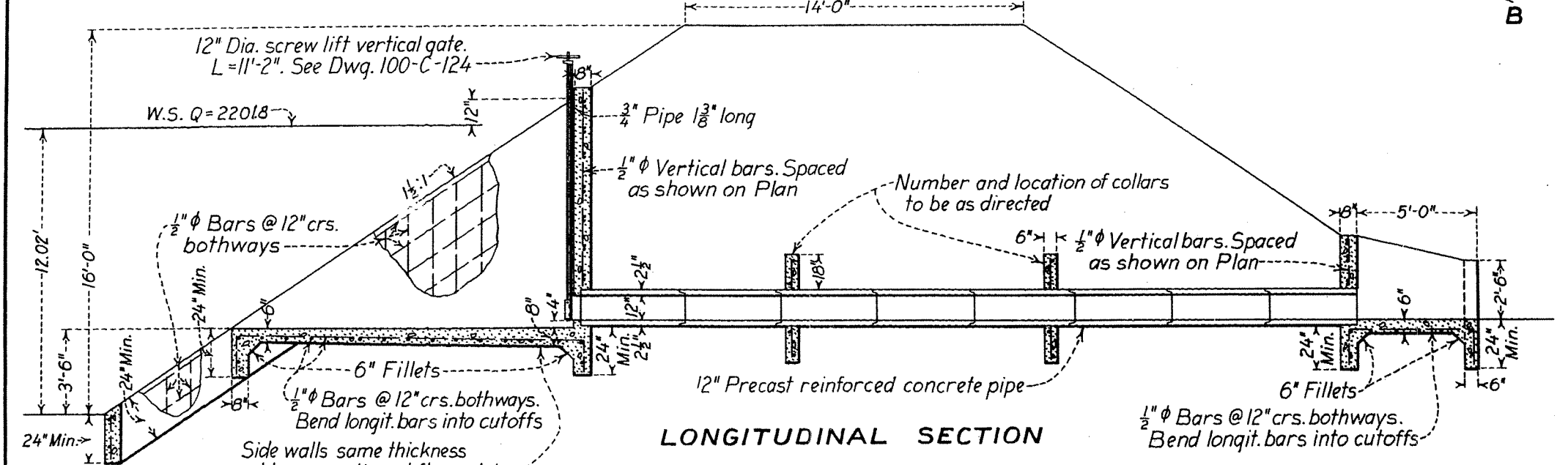
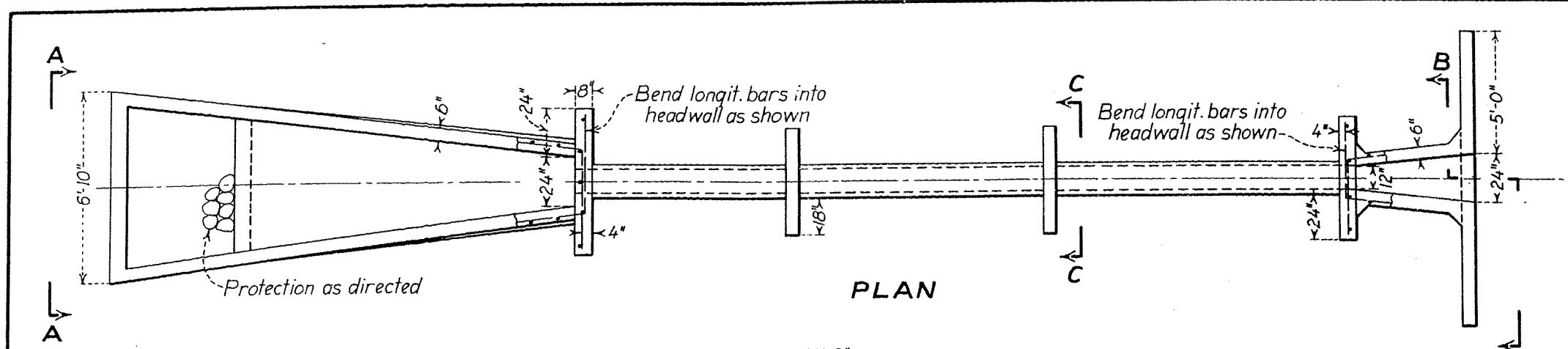
NOTES
 All reinforcement shall be placed so that the centers of bars in the outer layer will be 2" from face of concrete unless otherwise shown.
 Lap all bars 40 diameters at splices.
 All anchor bolts to be galvanized.

DEPARTMENT OF THE INTERIOR
 BUREAU OF RECLAMATION
 YAKIMA PROJECT-WASHINGTON
 ROZA DIVISION
YAKIMA RIDGE CANAL
12" CONCRETE PIPE TURNOUT-LINED SECTION

Rev 4-17-36

DRAWN: L.H.E. SUBMITTED: *W. J. Mahoney*
 TRACED: C.E.S. RECOMMENDED: *J. J. ...*
 CHECKED: *H.M.L.* APPROVED: *A.S. ...*

28170 DENVER, COLORADO, JAN. 25, 1936 33-D-850



ESTIMATED QUANTITIES

Concrete	10 Cu. Yds.
Reinforcement steel	900 Lbs.
Gate and gate hoist	200 Lbs.
12" Precast concrete pipe	32 Lin. Ft.

NOTES
 All reinforcement shall be placed so that the centers of bars in the outer layer will be 2" from face of concrete unless otherwise shown.
 Lap all bars 40 diameters at splices.
 All anchor bolts to be galvanized.

DEPARTMENT OF THE INTERIOR
 BUREAU OF RECLAMATION
 YAKIMA PROJECT - WASH.
 ROZA DIVISION

YAKIMA RIDGE CANAL
12" CONCRETE PIPE TURNOUT-UNLINED SECTION

DRAWN: L.H.E. SUBMITTED: *W.P. McKinney*
 TRACED: G.E.W. RECOMMENDED: *J.S. ...*
 CHECKED: *H.P.* APPROVED: *A.S. ...*

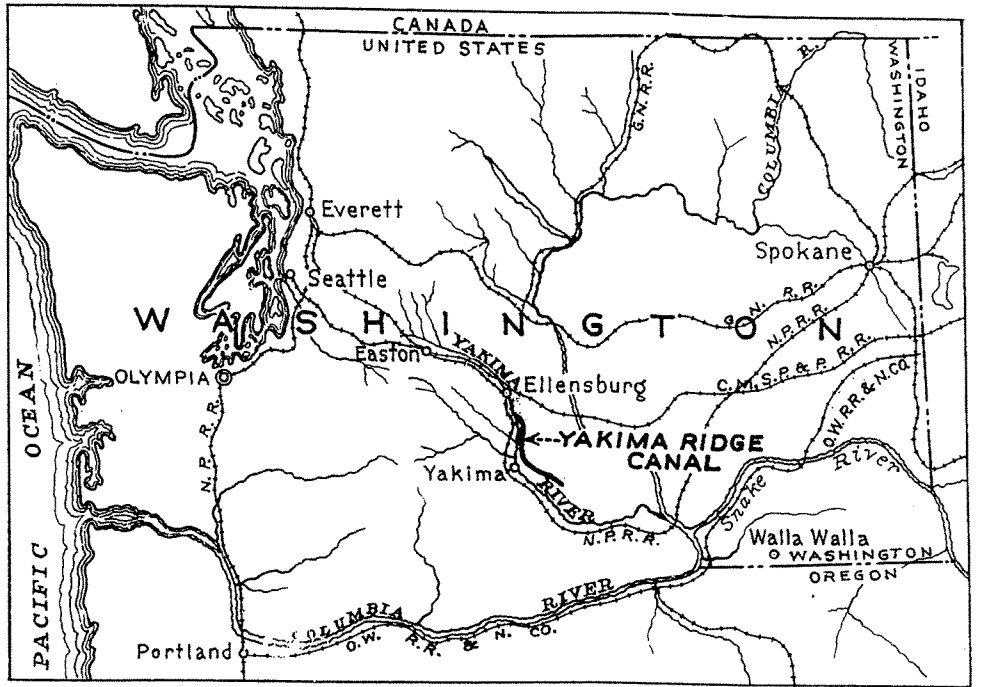
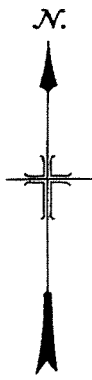
28171 DENVER, COLO., JAN. 23 1936. 33-D-851

F-2. Canal Station 721+35 to Station 804+74.35 and Station 942+00 to Station 1120+00; Specification No.729

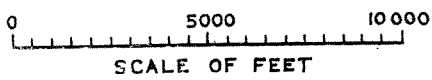
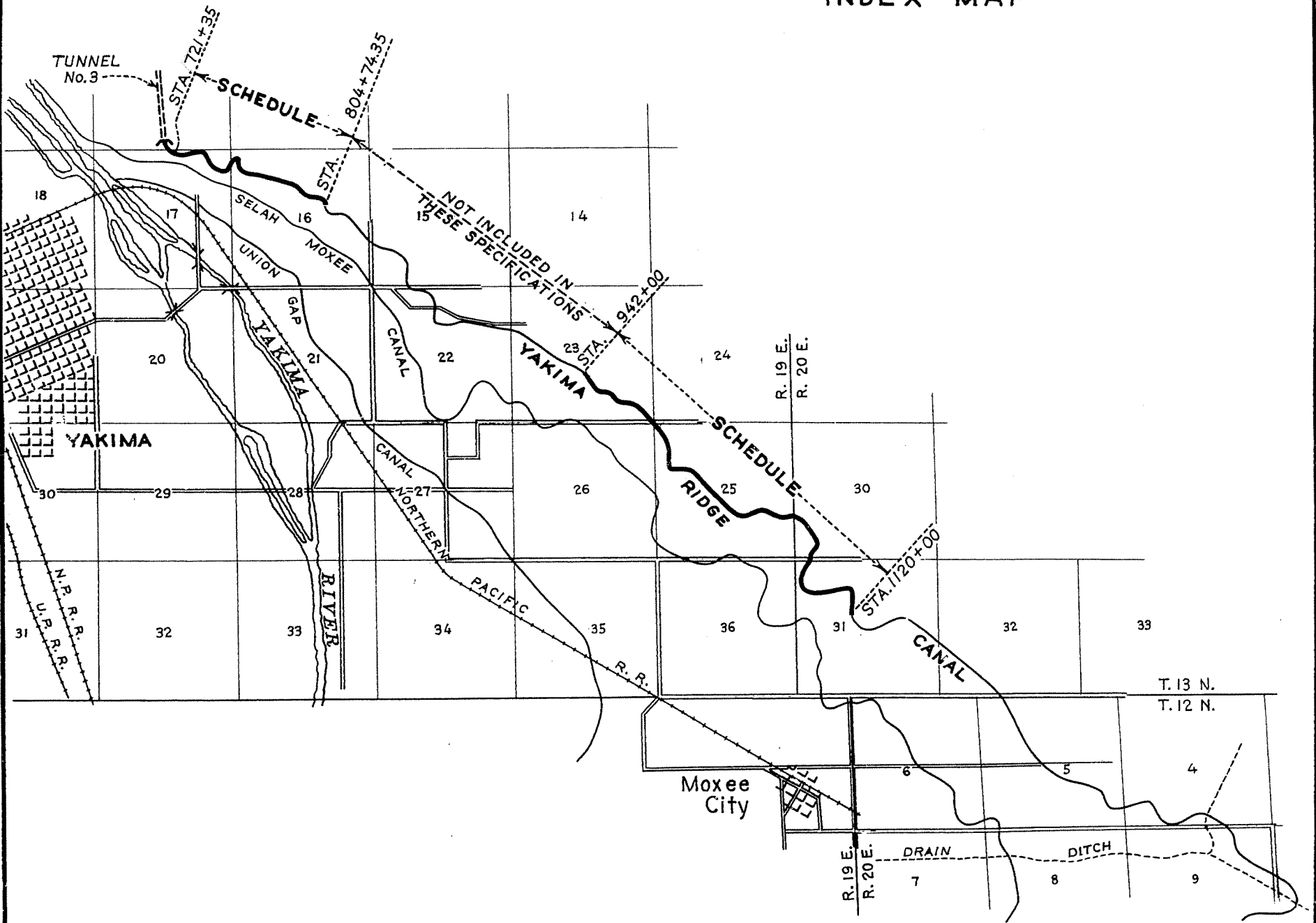
- 33-D-1027 — Yakima Ridge Canal, Sta. 721+35 to 804+74.35 and Sta. 942+00 to 1120+00, Location Map
- 33-D-1028 — Yakima Ridge Canal, Sta. 721+35 to 804+74.35 and Sta. 942+00 to 1120+00, Profile and Sections
- 33-D-1234 — Yakima Ridge Canal, Sta. 804+74.35 to Sta. 942+00 and County Road Revision, Profile and Section
- 33-D-1029 — Yakima Ridge Canal, Sta. 721+35 to 1120+00, Canal Lining – Transitions
- 33-D-1030 — Yakima Ridge Canal, Sta. 742+68 to 750+15, Bench Flume – Transitions

SPECIFICATIONS No.729

DRAWING No. 1



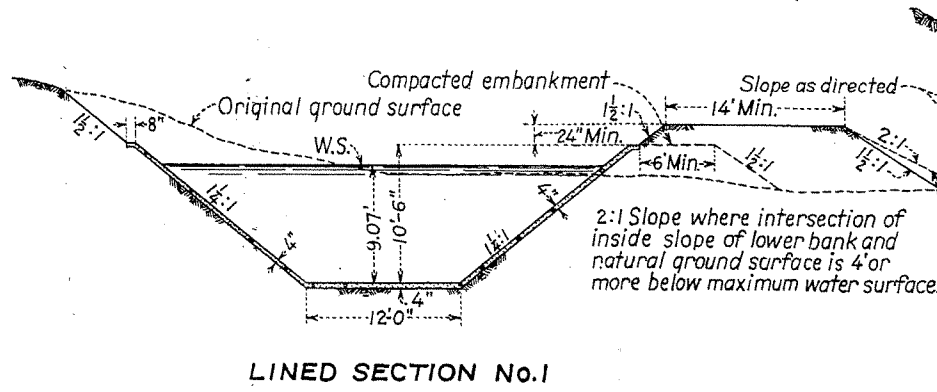
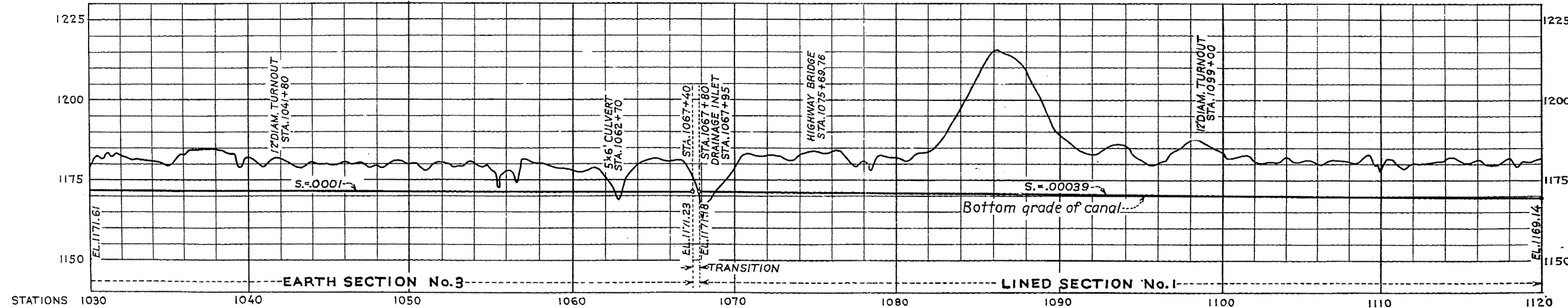
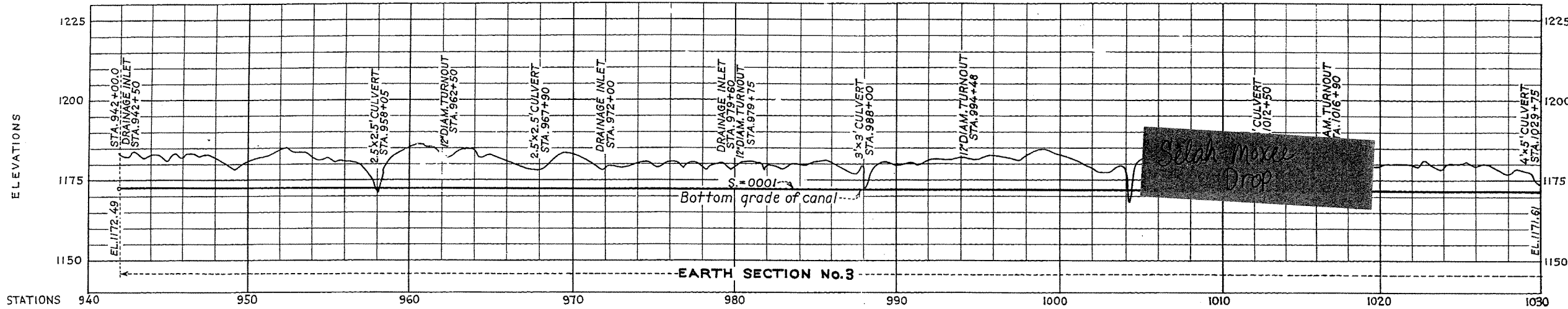
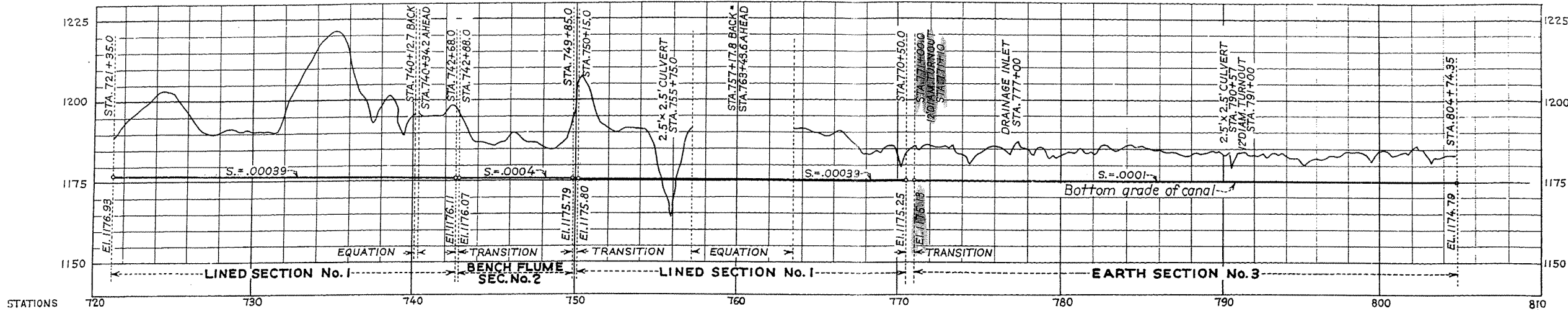
INDEX MAP



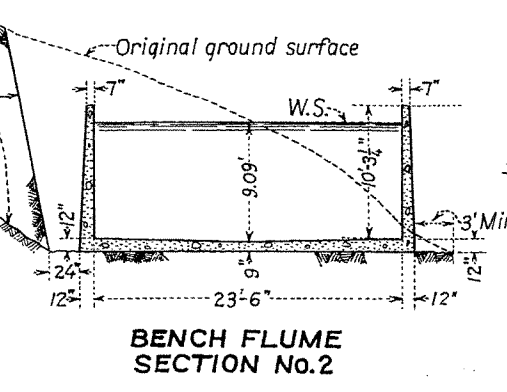
DEPARTMENT OF THE INTERIOR
BUREAU OF RECLAMATION
YAKIMA PROJECT-WASHINGTON
ROZA DIVISION
YAKIMA RIDGE CANAL
STA.721+35 TO 804+74.35 AND STA.942+00 TO 1120+00
LOCATION MAP

DRAWN: K.S.E. SUBMITTED: *N.P.M. McKinney*
TRACED: J.J.B. RECOMMENDED: *W.H. Fisher*
CHECKED: *T.A. G.* APPROVED: *A.P. Watten*

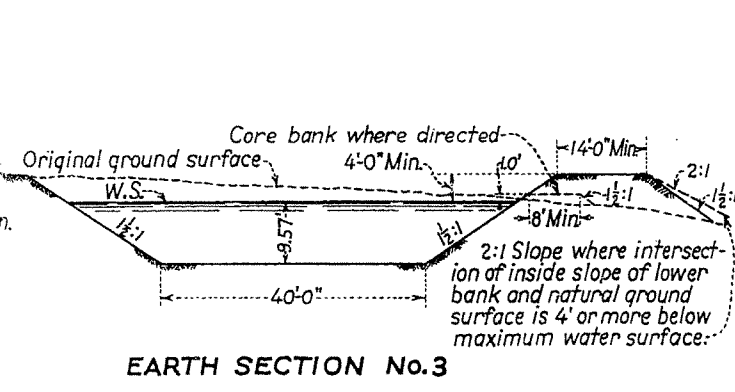
29052 DENVER, COLORADO - FEB. 11, 1937 **33-D-1027**



LINED SECTION No. 1



BENCH FLUME SECTION No. 2



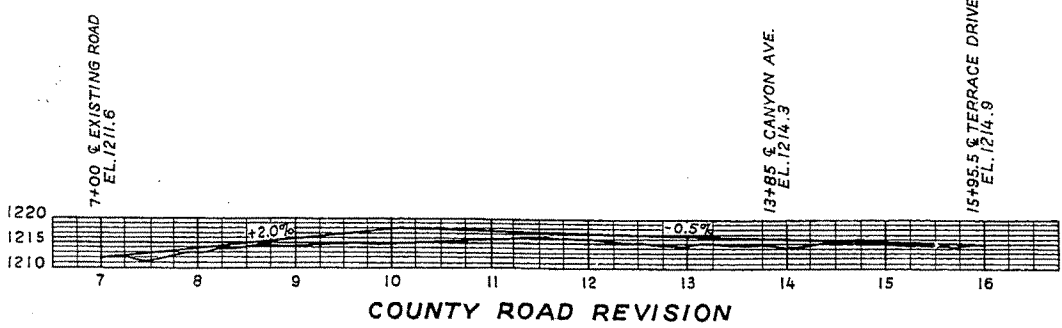
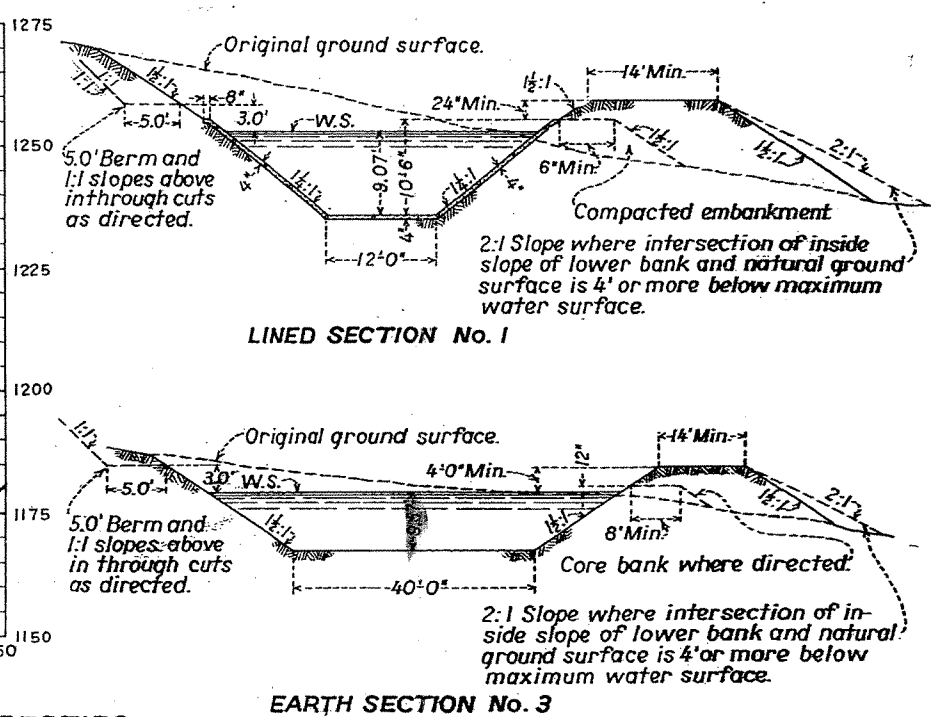
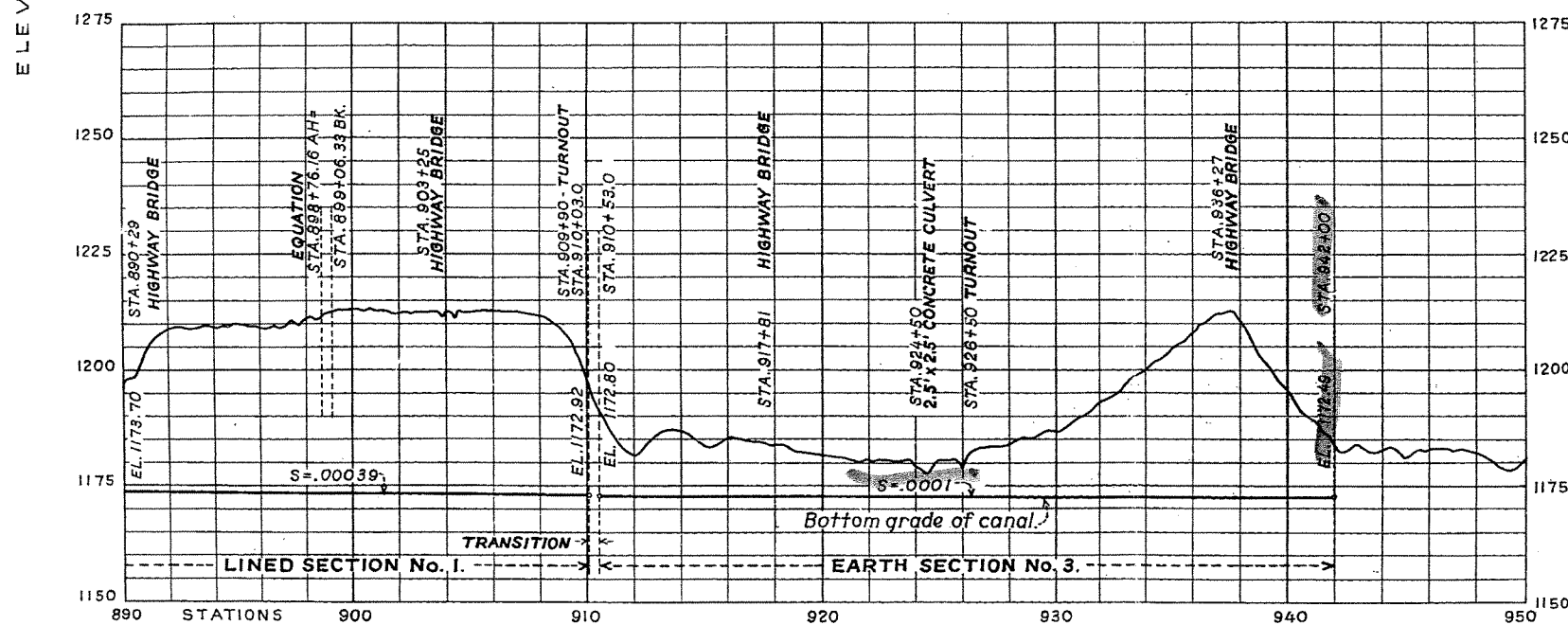
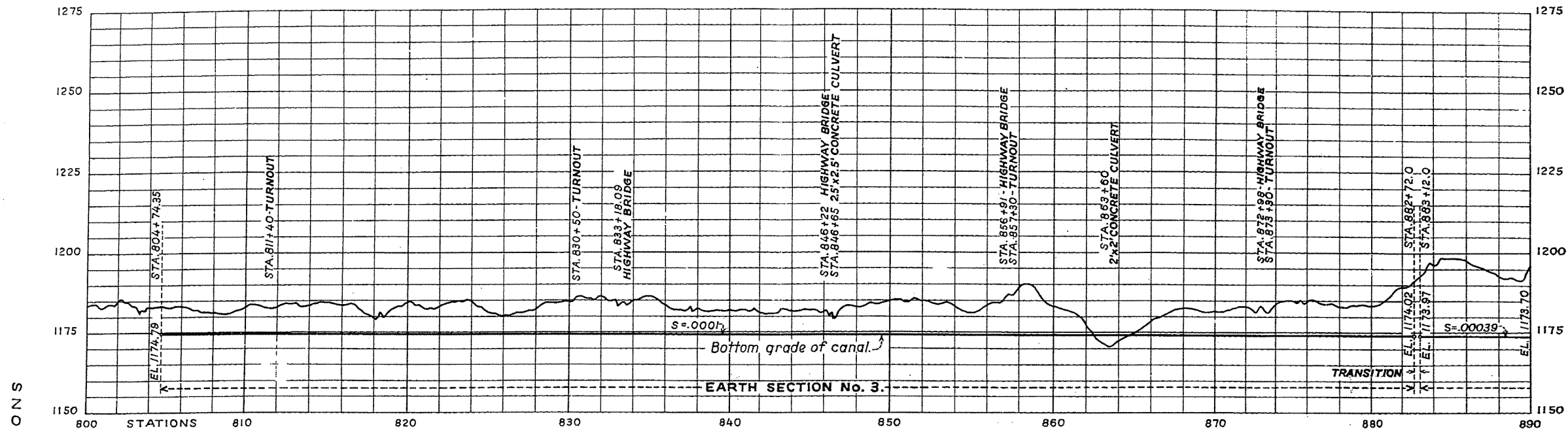
EARTH SECTION No. 3

HYDRAULIC PROPERTIES

SECTION	A	V	Q	r	n	S
Lined Section No. 1	211.67	6.14	1300	5.16	.014	.00039
Bench Flume Sec. No. 2	209.56	6.21	1300	5.14	.014	.0004
Earth Section No. 3	520.17	2.50	1300	6.98	.0225	.0001

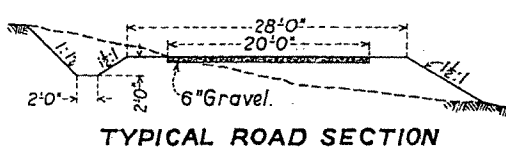
DEPARTMENT OF THE INTERIOR
BUREAU OF RECLAMATION
YAKIMA PROJECT - WASHINGTON
ROZA DIVISION
YAKIMA RIDGE CANAL
STA. 721+35 TO 804+74.35 AND STA. 942 TO 1120
PROFILE AND SECTIONS

DRAWN: K.S.E. SUBMITTED: *[Signature]*
TRACED: J.V.B. RECOMMENDED: *[Signature]*
CHECKED: U.B.Z. APPROVED: *[Signature]*



HYDRAULIC PROPERTIES

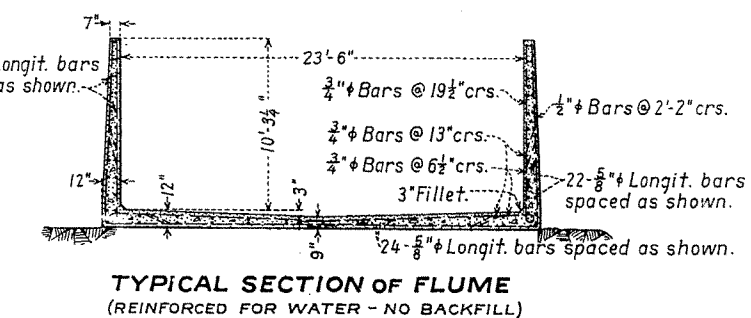
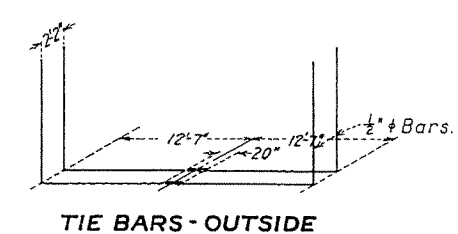
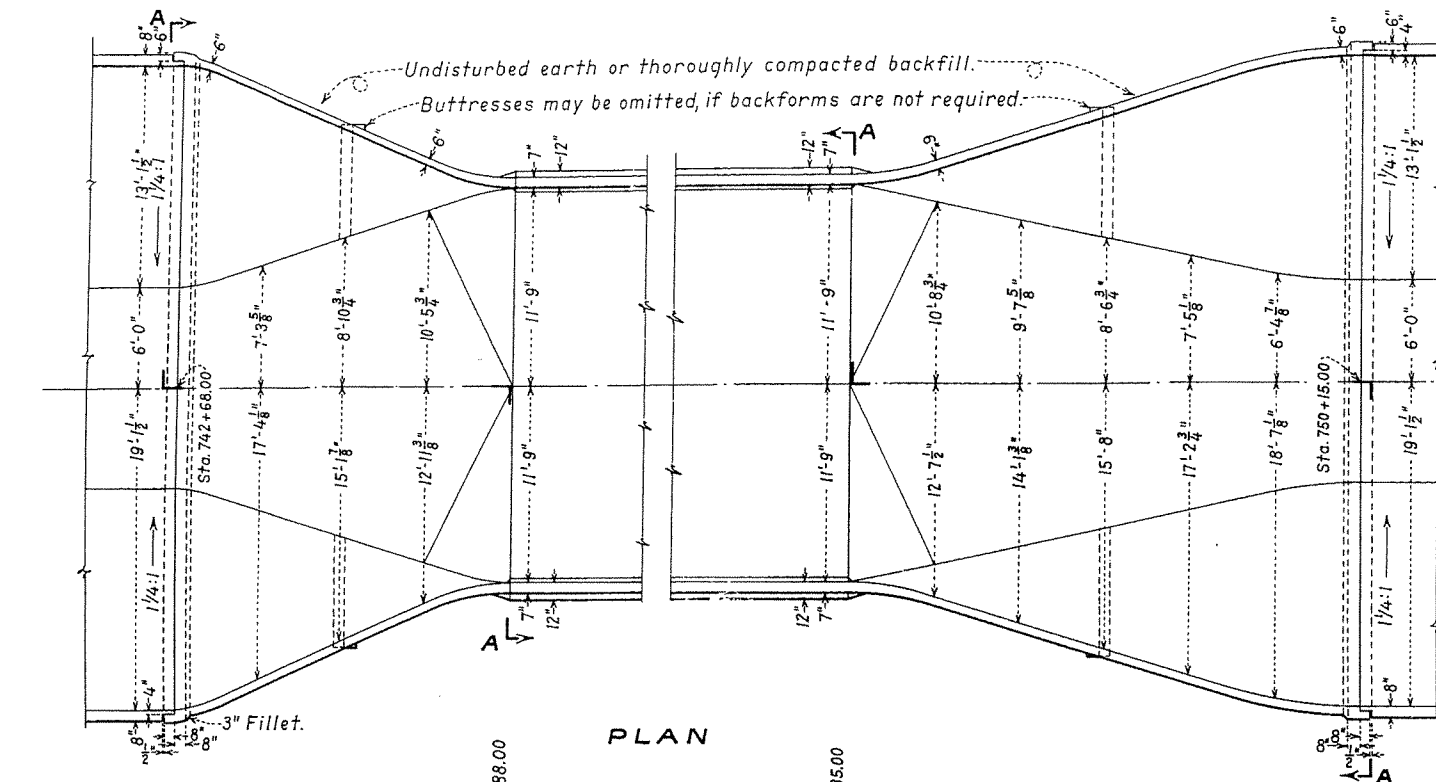
SECTION	A	V	Q	r	n	S
Lined Section No. 1	211.67	6.14	1300	5.16	.014	.00039
Earth Section No. 3	520.17	2.50	1300	6.98	.0225	.0001



DEPARTMENT OF THE INTERIOR
BUREAU OF RECLAMATION
YAKIMA PROJECT-WASHINGTON
ROZA DIVISION
YAKIMA RIDGE CANAL-STA. 804+74.35 TO 942+00
AND COUNTY ROAD REVISION
PROFILE AND SECTIONS

DRAWN: K.S.E. SUBMITTED: *[Signature]*
TRACED: J.A.R. RECOMMENDED: *[Signature]*
CHECKED: *[Signature]* APPROVED: *[Signature]*

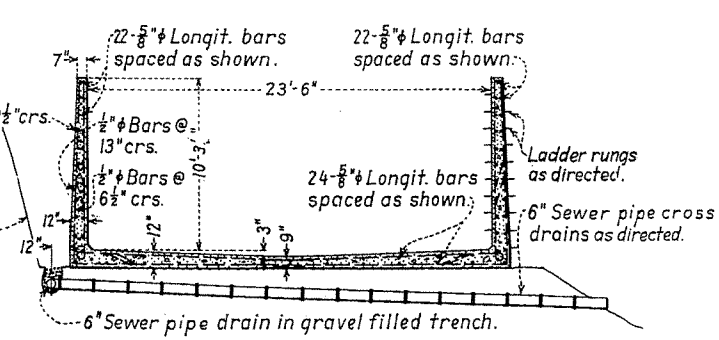
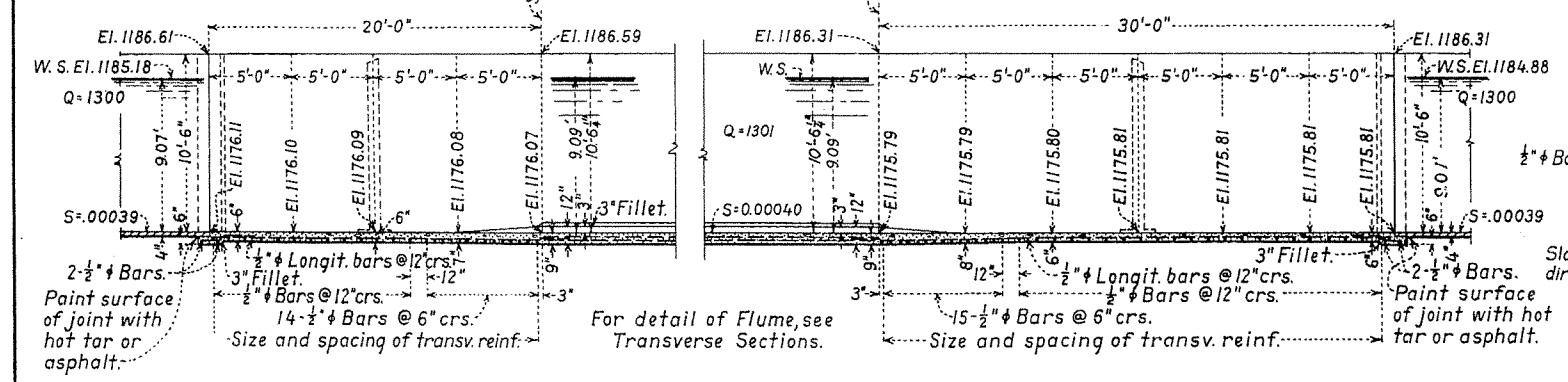
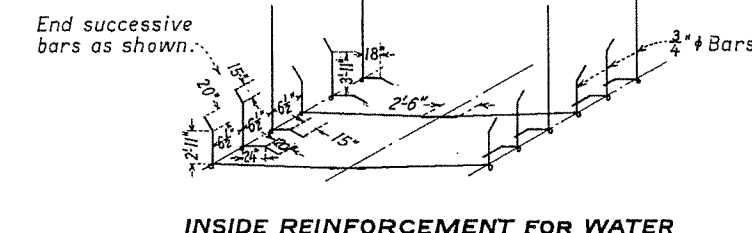
38-278 DENVER, COLORADO, FEB. 2, 1938 33-D-1234



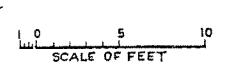
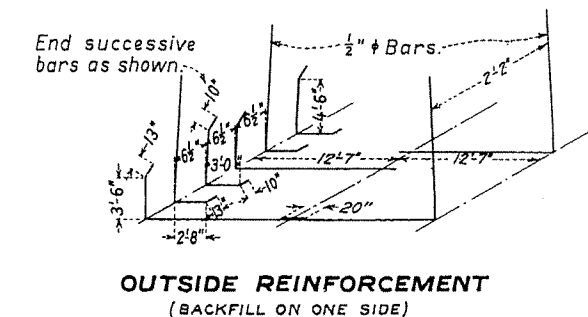
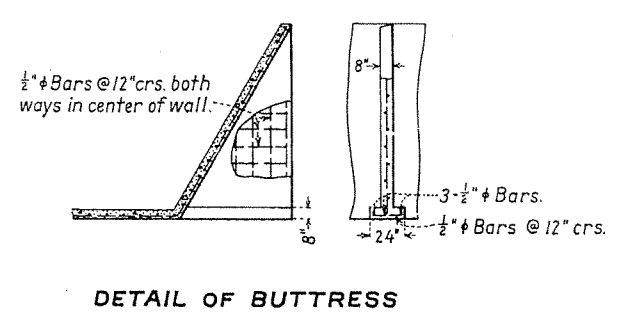
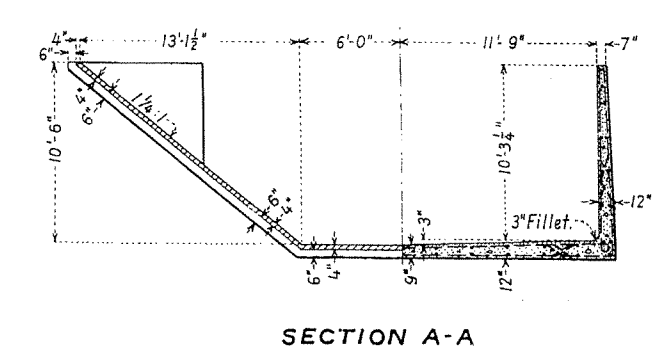
HYDRAULIC PROPERTIES

SECTION	A	V	Q	r	n	s
Bench flume	209.56	6.21	1301	5.14	0.014	0.00040
Lined canal	211.67	6.14	1300	5.16	0.014	0.00039

ESTIMATED QUANTITIES
Concrete.....1065 Cu. Yds.
Reinforcement steel.....127,000 Lbs.



NOTES
All reinforcement shall be placed so that the centers of bars in the outer layers are 2" from the face of concrete, unless otherwise shown.
Lap all bars 40 diameters at splices.
Thickness of concrete to vary uniformly between dimensions shown.
Stations and elevations, shown on plan and sections, refer to bottom grade, unless otherwise noted.



DEPARTMENT OF THE INTERIOR
BUREAU OF RECLAMATION
YAKIMA PROJECT - WASHINGTON
ROZA DIVISION

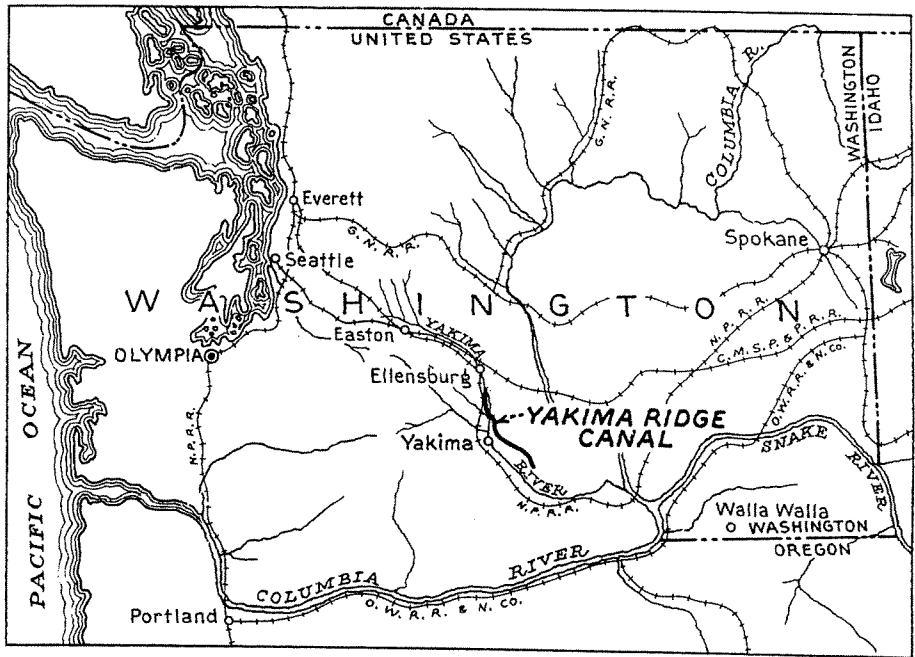
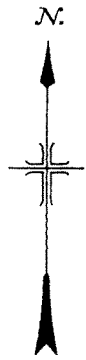
**YAKIMA RIDGE CANAL - STA. 742+68 TO 750+15
BENCH FLUME-TRANSITIONS**

DRAWN: K.E.B. SUBMITTED: *W.M. B... ..*
TRACED: S.E.W. RECOMMENDED: *W.M. B... ..*
CHECKED: *W.M. B... ..* APPROVED: *W.M. B... ..*

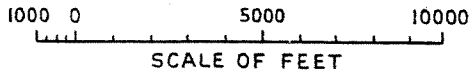
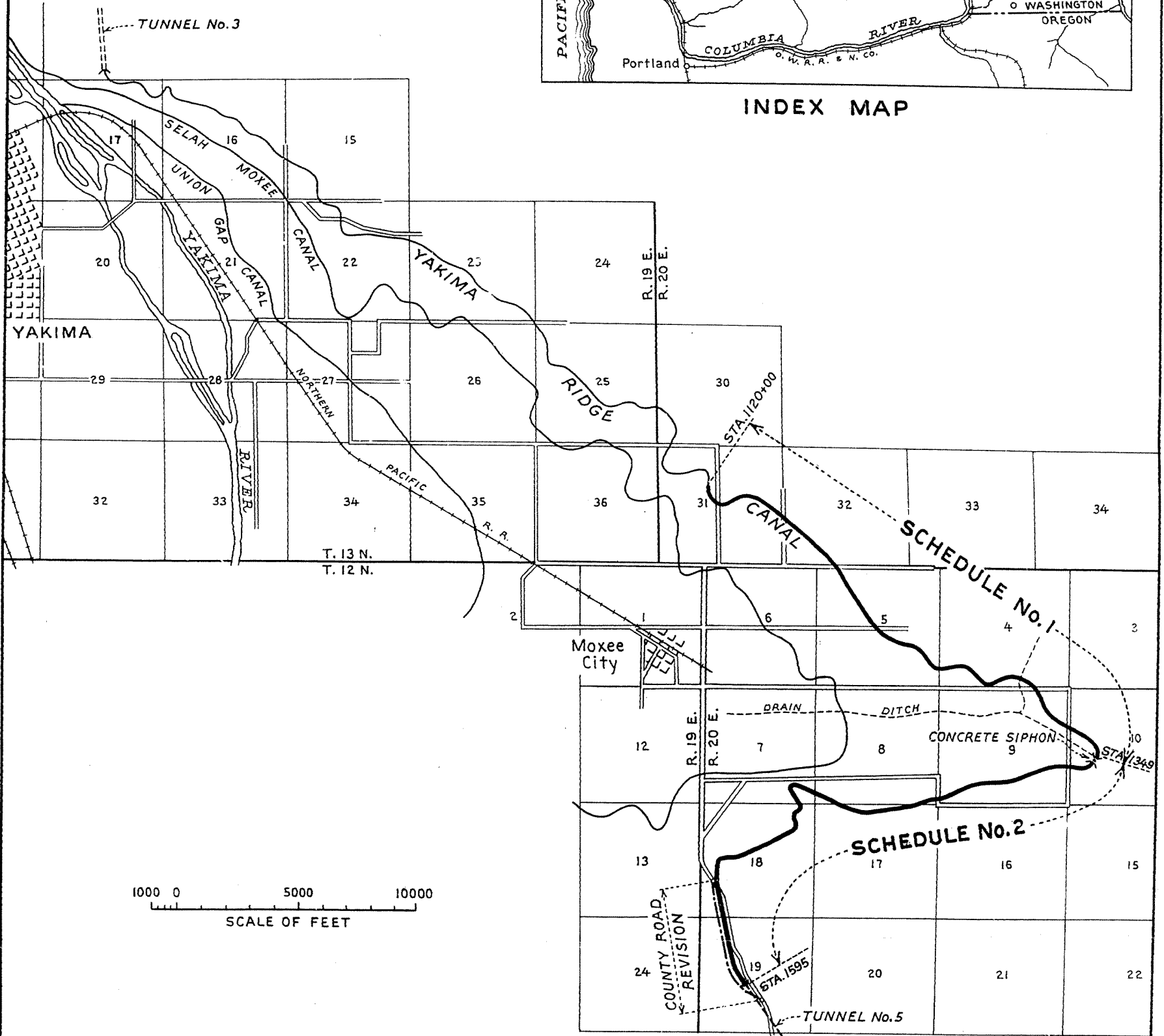
29055 DENVER, COLORADO, FEB. 19, 1937. 33-D-1030

F-3. Canal Station 1120+00 to Station 1595+00; Specification No.748

- 33-D-1132 — Yakima Ridge Canal, Sta. 1120+00 to 1595+00, Location Map
- 33-D-1133 — Yakima Ridge Canal, Sta. 1120+00 to 1349+00, Profile and Section
- 33-D-1134 — Yakima Ridge Canal, Sta. 1349+00 to 1595+00, Profile and Section



INDEX MAP

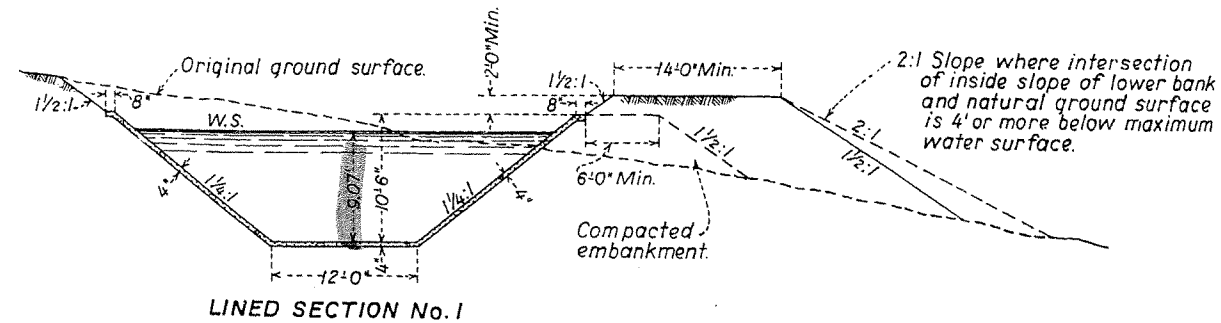
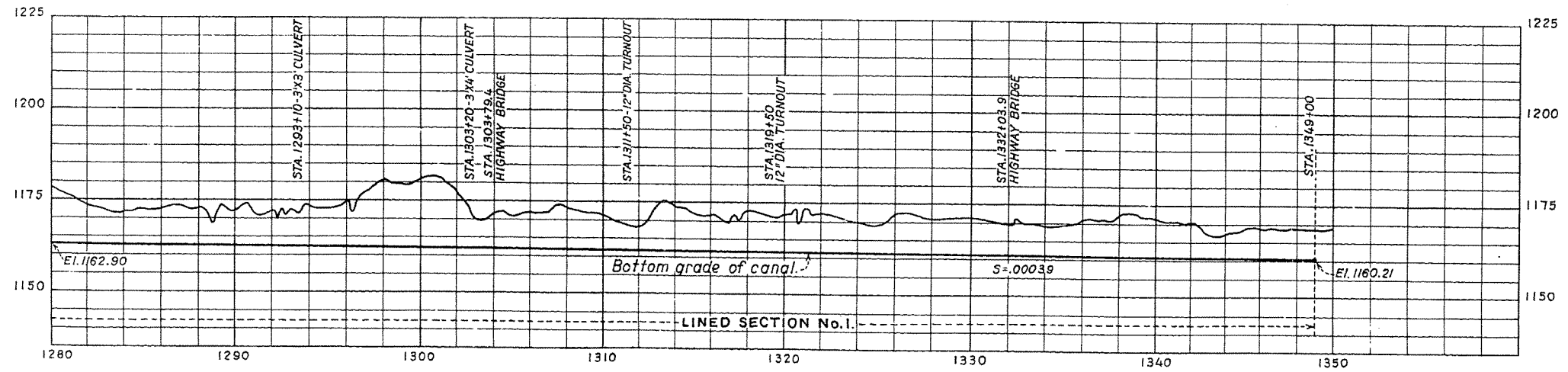
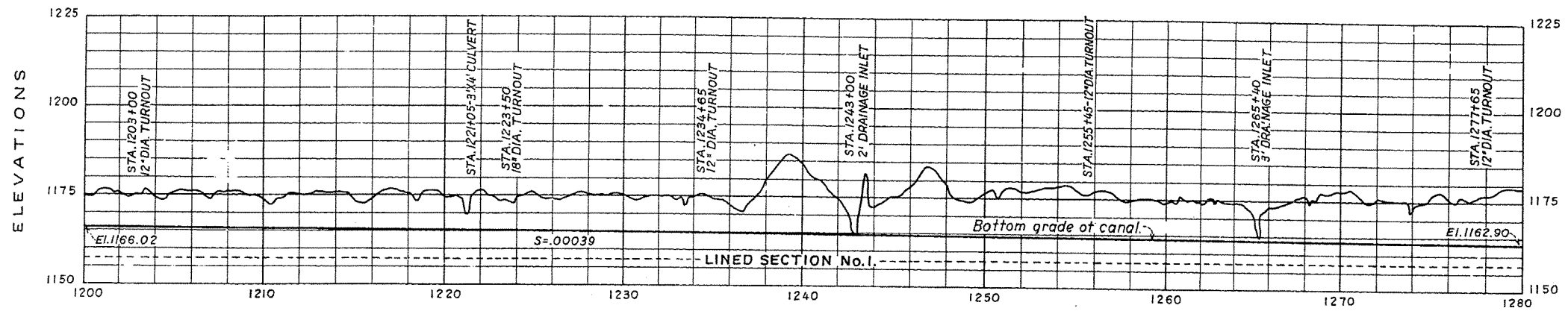
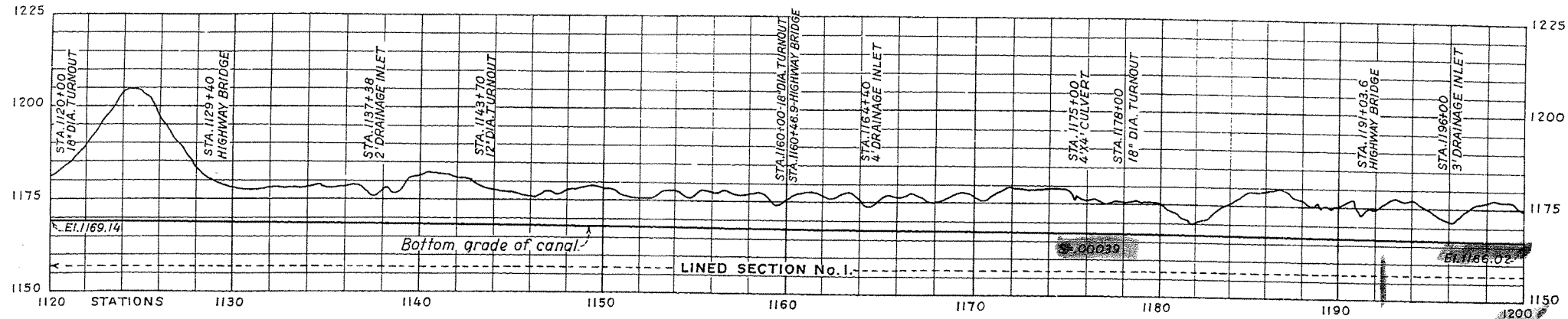


DEPARTMENT OF THE INTERIOR
 BUREAU OF RECLAMATION
 YAKIMA PROJECT-WASHINGTON
 ROZA DIVISION
YAKIMA RIDGE CANAL-STA.1120+00 TO 1595+00
LOCATION MAP

DRAWN: K.S.E.	SUBMITTED: <i>W.R. Maffin</i>
TRACED: C.E.M.	RECOMMENDED: <i>W.N. Nalder</i>
CHECKED: <i>W.R.</i>	APPROVED: <i>W.R.</i>
29284	DENVER, COLORADO, JUNE 8, 1937. 33-D-1132

16" x 21"





LINED SECTION No. 1

HYDRAULIC PROPERTIES

A	V	Q	r	n	s
211.67	6.14	1300	5.16	.014	.00039

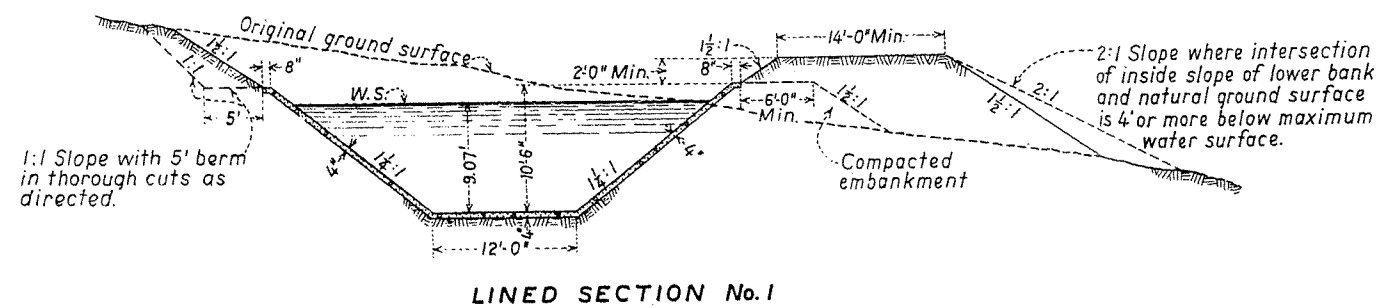
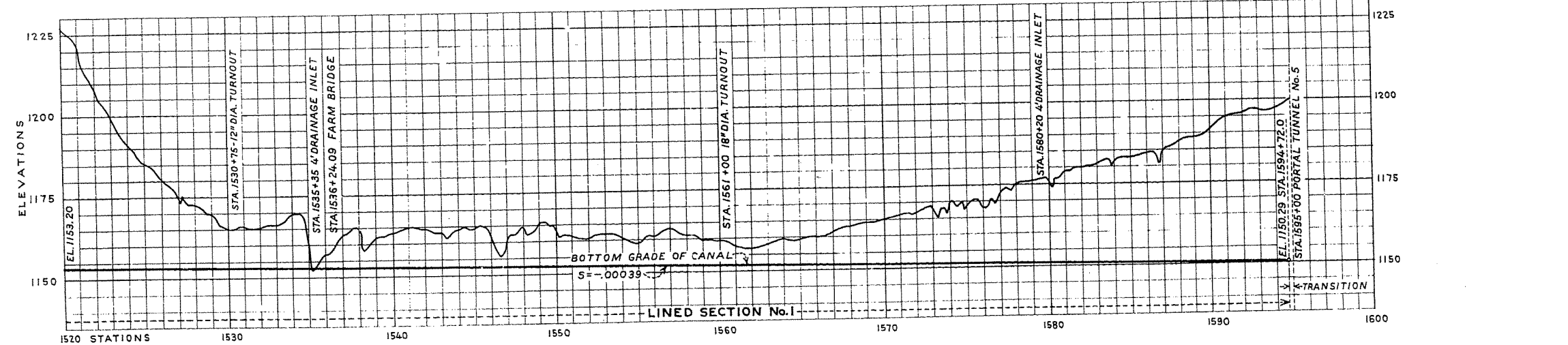
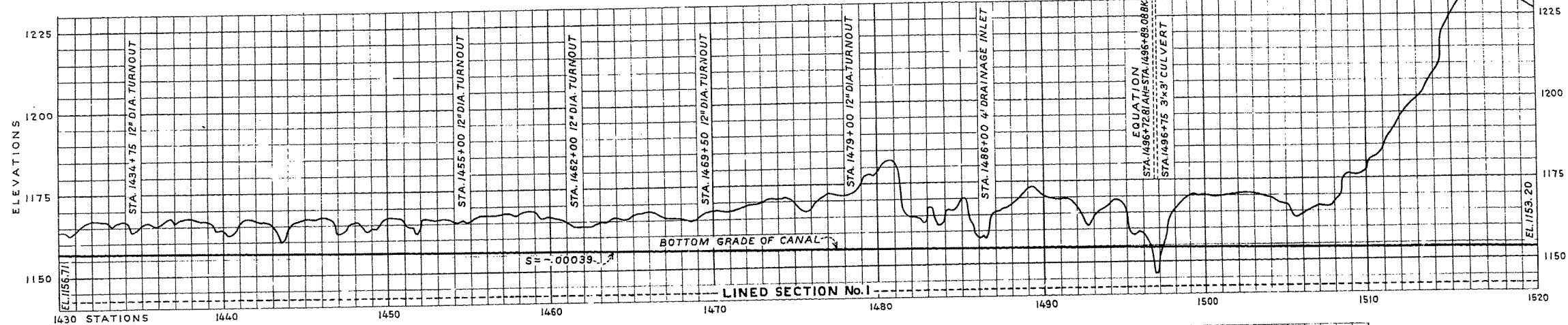
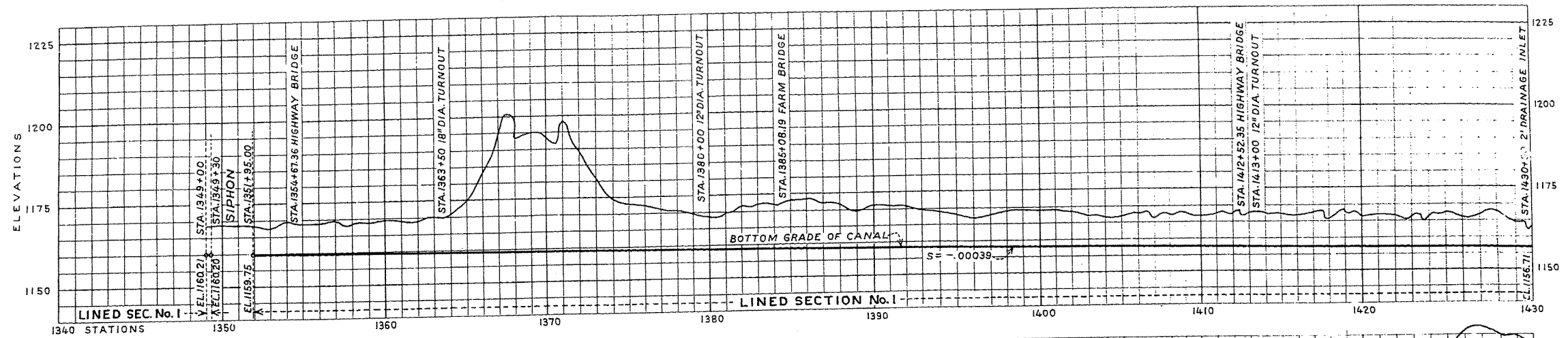
SCHEDULE NO. 1

DEPARTMENT OF THE INTERIOR
BUREAU OF RECLAMATION
YAKIMA PROJECT - WASHINGTON
ROZA DIVISION
YAKIMA RIDGE CANAL - STA. 1120+00 TO 1349+00
PROFILE AND SECTION

DRAWN: J.S.E. SUBMITTED: *[Signature]*
TRACED: J.A.R. RECOMMENDED: *[Signature]*
CHECKED: J.S.E. APPROVED: *[Signature]*

29285 DENVER, COLORADO, APR. 6, 1937. 33-D-1133

SPECIFICATIONS No. 748



LINED SECTION No. 1

HYDRAULIC PROPERTIES

A	V	Q	f	n	S
211.67	6.14	1300	5.16	.014	.00039

SCHEDULE NO. 2

DEPARTMENT OF THE INTERIOR
BUREAU OF RECLAMATION
YAKIMA PROJECT-WASHINGTON
ROZA DIVISION
YAKIMA RIDGE CANAL - STA. 1349 TO 1595
PROFILE - SECTION

DRAWN... K.S.E. SUBMITTED... *[Signature]*
TRACED... C.V.R. RECOMMENDED... *[Signature]*
CHECKED... U.S. APPROVED... *[Signature]*

29286 DENVER, COLORADO JUNE 28, 1937 33-D-1134