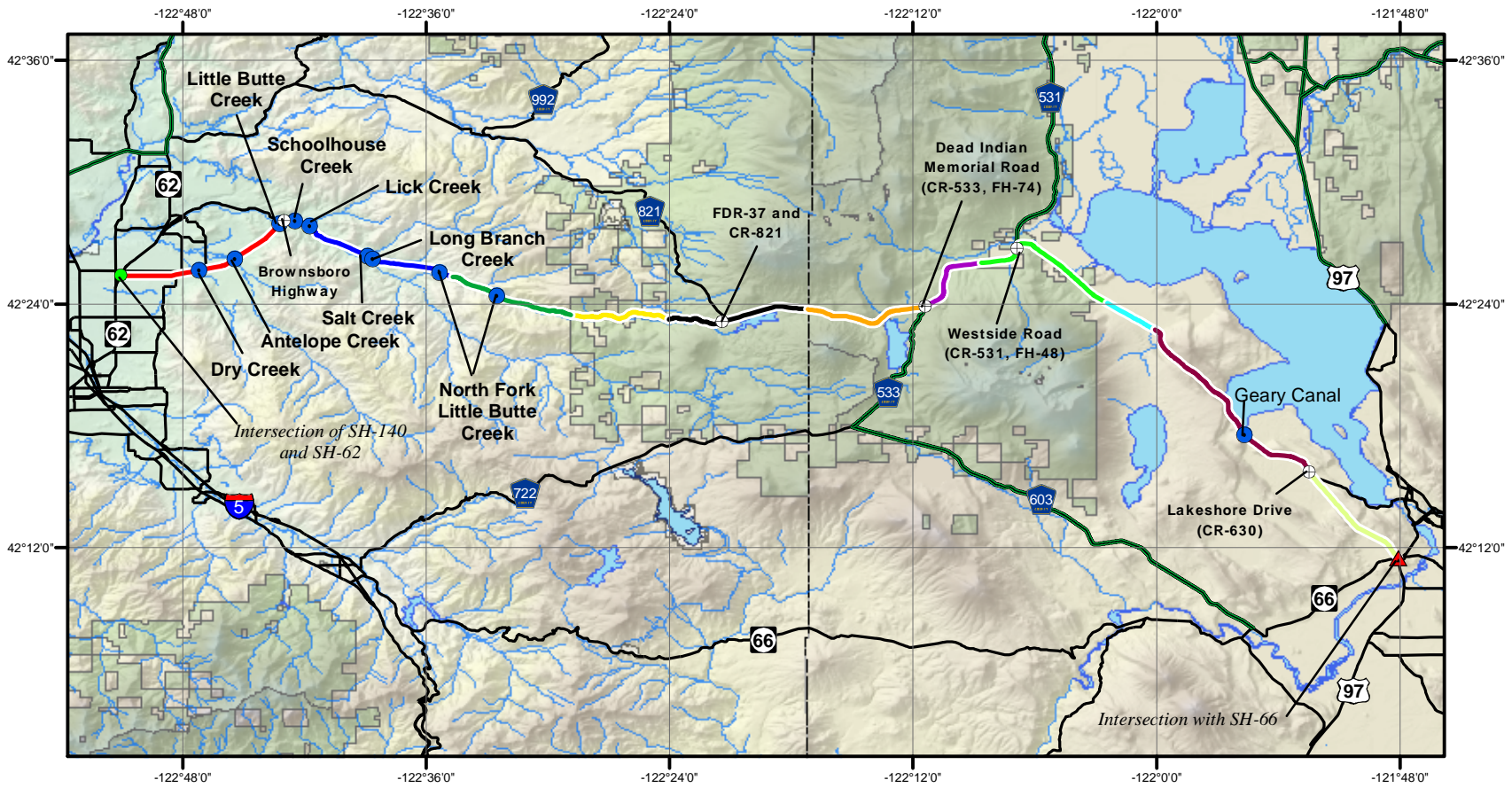


# FH-53, Lake of the Woods

## Route Description



**Forest Highway 53**

**SEGMENT**

- 1 (Red line)
- 2 (Blue line)
- 3 (Green line)
- 4 (Yellow line)
- 5 (Black line)
- 6 (Orange line)
- 7 (Purple line)
- 8 (Light Green line)
- 9 (Cyan line)
- 10 (Maroon line)
- 11 (Light Yellow line)

- FH begin
- ▲ FH end
- Bridge
- ⊕ Intersection
- Forest Highway
- Other roads
- Streams
- Lake or river
- Parks
- National Forest
- County boundary

Total route length: 68.8 miles



From the intersection of SH-140 and SH-62 near White City, easterly 68.8 miles on SH-140 to the intersection with SH-66 approximately 2 miles southwest of Klamath Falls.

