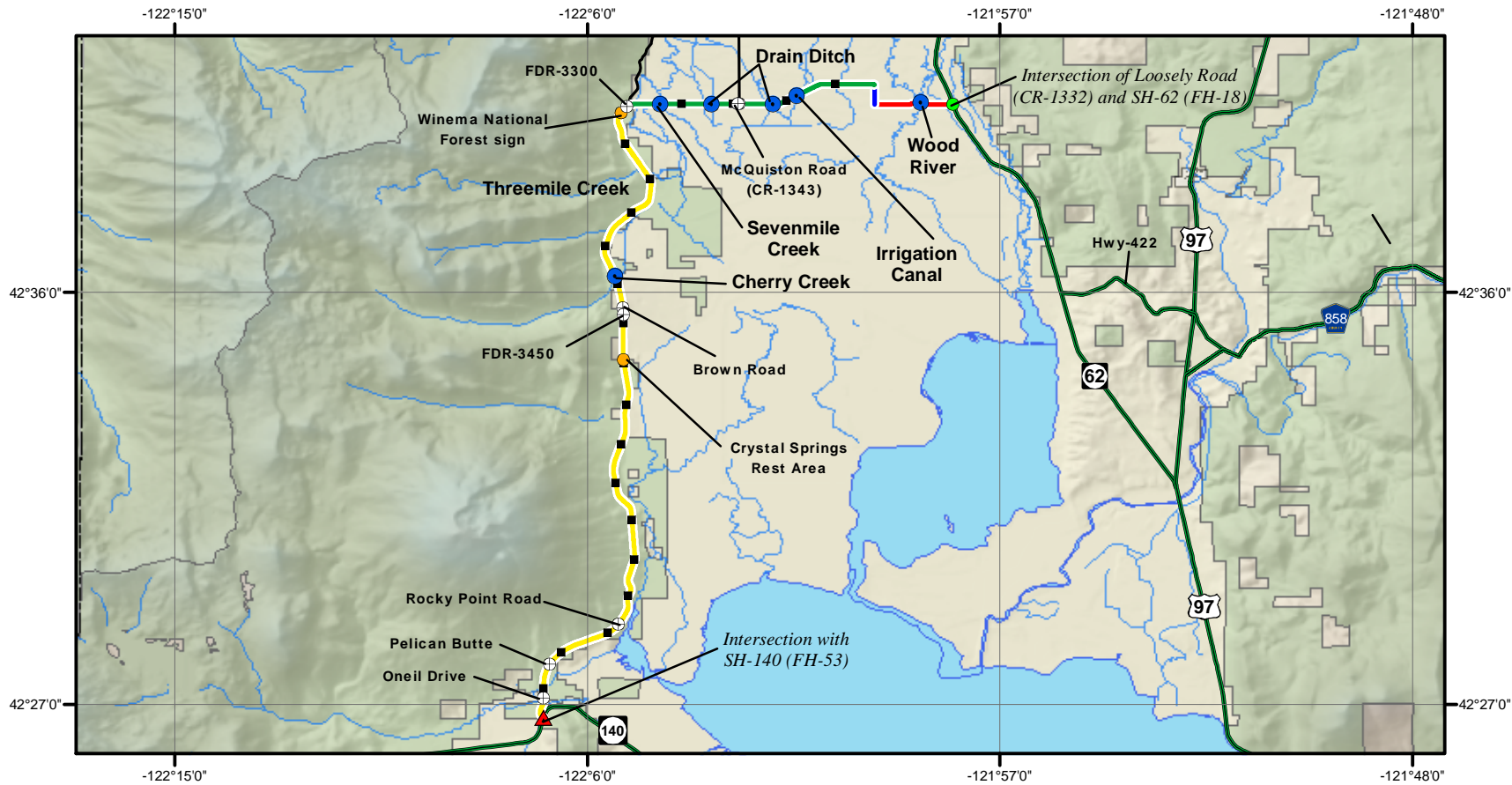


# FH-48, Klamath

# Route Description



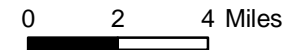
**Forest Highway 48**

**SEGMENT**

- 1
- 2
- 3
- 4

- FH begin
- ▲ FH end
- Bridge
- ⊕ Intersection
- Misc. point
- Milepost
- Forest Highway
- Other roads
- Streams
- Lake or river
- Parks
- National Forest
- County boundary

Total route length: 23.5 miles



From the intersection of Loosely Road (CR-1332) and SH-62 (FH-18) approximately 3 miles south of Fort Klamath, westerly 1.5 miles on Loosely Road (CR-1332) to the intersection with Weed Road, then 0.5 miles north on Weed Road (CR-1333) to the intersection with Sevenmile Road, then westerly 4.7 miles on Sevenmile Road (CR-1349) to the junction with Westside Road just east of the Seven Mile Creek Bridge, then southerly 16.8 miles on Westside Road (FDR-34/CR-531) to the intersection with SH-140 (FH-53) approximately 2 miles northwest of Odessa.