

FORT HUACHUCA—SIERRA VISTA

SIERRA VISTA MUNI—LIBBY AAF (FORT HUACHUCA) (FHU)(KFHU) CIV/MIL 3 N UTC-7

PHOENIX
H-4J, L-5C
IAP, DIAP, AD

N31°35.31' W110°20.66'

4719 B FUEL 100, JET A TPA—See Remarks Class III, ARFF Index A

RWY 08-26: H12001X150 (CONC) S-70, D-200, DT-400, DDT-700 PCN 54 R/B/W/T HIRL 1.0% up W

RWY 08: PAPI(P4L)—GA 3.0° TCH 26'.

RWY 26: PAPI(P4L)—GA 3.0° Rgt tfc.

RWY 12-30: H5366X100 (ASPH-CONC) S-46, D-106, DT-137,

DDT-172 PCN 24 F/A/W/T MIRL

RWY 12: PAPI(P4L)—GA 3.0° TCH 51'.

RWY 30: PAPI(P2R)—GA 3.0° TCH 51'. Rgt tfc.

RWY 03-21: H4285X75 (ASPH-CONC) PCN 22 F/A/W/T

2.0% up SW MIRL

RWY 03: Thld dspcd 1253'. RWY 21: Rgt tfc.

MILITARY SERVICES: FUEL J8 (NC-100, A). Petrol, oils and lubricants avbl Mon-Fri 1330-0100Z, exc holidays, other times 24 hr prior notice. DSN 879-2860/62. Petrol, oils and lubricants svc require crew member attend to specify fuel/oil requirement. Fuel limited to 6000 gallons. **TRAN ALERT** Tran acft, ctc Libby ATC or Base OPS to coordinate parking.

AIRPORT REMARKS: Attended Mon-Sun 1400-0000Z. Fuel available 1400-0000Z 7 days/week, after hrs call 520-803-6439 (svc fee). Joint use civil-military arpt; extensive military jet ops weekdays. Bird hazard invof all rwy on tkfs and apchs. Deer on and invof all rwy and twys especially at night.

When Class D airspace in effect unmanned aerial vehicles opr surface to 7000' MSL. Bird hazard exists all rwy. Expect wind shear on apch to all rwy. Civilian acft PPR to enter military ramp. Non scheduled arriving acft requiring assistance, ctc GOC 533-2291/2292. TPA—fixed wing acft north and rotary wing south traffic pattern, altitude fixed wing reciprocating 5700(981), rotary wing 5500(781), fixed wing turboprop/jet 6200(1481). Twy G and Twy J limited to single wheel acft maximum 33,000 lbs, Twy K limited to single wheel acft maximum 50,000 lbs. Twy D and acft apron on NW side limited to dual wheels acft maximum 100,000 lbs. Circling not authorized South of Rwy 08 and Rwy 30. ACTIVATE MIRL Rwy 03-21 and Rwy 12-30, HIRL Rwy 08-26, PAPI Rwy 08, Rwy 26, Rwy 12, Rwy 30 and Perimeter lgt H1—CTAF.

MILITARY REMARKS: Opr Mon-Fri 1000-2359Z, except holidays, other times 72 hr PPR DSN 879-2860/2862, C520-538-2860/2862. See FLIP AP/1 Supplementary Arpt Remarks. **RSTD** 24 hr PPR for all transient military acft. Civilian acft PPR to enter military ramp. Twy G and Twy J limited to single wheel acft maximum 33,000 lbs, Twy K limited to single wheel acft maximum 50,000 lbs. Circling not authorized South of Rwy 08 and Rwy 30.

CAUTION Expect wind shear on apch to all rwy; arpt SW wind may not be representative of wind on final apch. When Class D airspace in effect unmanned aerial vehicles (UAV) operate sfc to 7000' MSL. Extensive military jet ops weekdays. **CSTMS/AG/IMG** Avbl with 72 hr prior notice for US military or DoD contract acft only. **MISC** All transient and remain overnight acft using mil side must sign in at base ops prior to dep flight line. 72 hr PPR for use of assault strip located 5 NM NE. Non-scheduled arriving acft require assistance call EOC 533-2291/2292.

All acft using military transient parking sign in at base ops prior to leaving flight line. Wx observation/forecast Mon-Fri 1400-0600Z, except holidays, ASOS other times. Libby wx avbl on 122.95. Remote briefing svc avbl 25th operational weather squadron Davis-Monthan AFB DSN 228-6598/6599/6588, call C520-228-6598/6599/6588, and C1-877-451-8367, ext 1, or HTTPS://25OWS.DM.AF.MIL. A Libby Base OPS opr Mon-Fri 1400-2359Z, except holidays other times 72 hr PPR. DSN 879-2860/2862, C520-538-2860/2862.

WEATHER DATA SOURCES: ASOS 119.675 (520) 459-7316

COMMUNICATIONS: CTAF 124.95 ATIS 134.75 265.7 UNICOM 122.95

PRESCOTT FSS (PRC) TF 1-800-WX-BRIEF. NOTAM FILE FHU.

Ⓡ LIBBY AAF GCA APP/DEP CON 127.05 254.35 (Mon-Fri 1400-0600Z) other times ctc

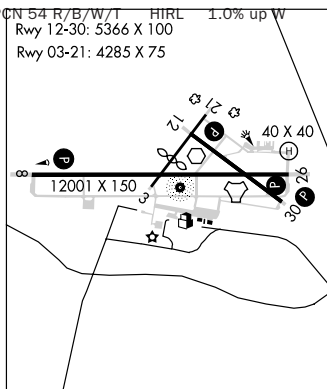
Ⓡ ALBUQUERQUE CENTER APP/DEP CON 134.45 327.15

LIBBY TOWER 124.95 284.75 (Mon-Fri 1400-0600Z) other times ctc ALBUQUERQUE CENTER.

GND CON 121.7 268.7

LIBBY OPS 122.95

AIRSPACE: CLASS D svc Mon-Fri 1400-0600Z, or other times by advanced NOTAM, other times Class G.



CONTINUED ON NEXT PAGE

CONTINUED FROM PRECEDING PAGE

RADIO AIDS TO NAVIGATION: NOTAM FILE FHU.

LIBBY (T) VOR 113.6 FHU N31°35.38' W110°21.30' at fld. Unmonitored when twr clsd. No NOTAM MP 2nd Tue of month 1500-1900Z.

DOUGLAS (L) VORTACW 108.8 DUG Chan 25 N31°28.36' W109°36.12' 268° 38.7 NM to fld. 4160/13E. NOTAM FILE DUG.

FORT HUACHUCA (T) TACAN Chan 53 ARH (111.6) N31°35.13' W110°20.34' at fld. 4659/12E. Unmonitored when twr clsd. No NOTAM MP 1st Wed of month 1500-2300Z.

DRAGOO NDB (MHW) 410 DAO N31°35.14' W110°20.66' at fld. Unmonitored when twr clsd.

ILS 109.9 I-FHU Rwy 26. Class IE. Unmonitored when twr clsd. No NOTAM MP 3rd Thu of month 1500-2300Z.

ASR/PAR (Mon-Fri 1400-0600Z except holidays)

COMM/NAV/WEATHER REMARKS: For emergency, freq 121.5 monitored when twr clsd. USAF weather forecast avbl 1200-0300Z from Davis Monthan AFB. Radar see Terminal FLIP for Radar Minima.

.....

HELIPAD H1: H40X40 (ASPH)

HELIPAD REMARKS: ACTIVATE perimeter lgts Helipad H1-CTAF.

GANADO (85V) 2 E UTC-7 N35°42.10' W109°31.00'

DENVER

6662

RWY 18-36: 4500X80 (DIRT)

RWY 36: Fence.

AIRPORT REMARKS: Unattended. Arpt CLOSED indef. CAUTION-Watch for livestock. Water on rwy and gulleys with soft sand after heavy rain. No line of sight between rwy ends. Rwy 18-36 has steep side slopes. Rwy 36 first 600' has rock outcroppings in surface. No rwy maintenance and rwy littered with trash. Rwy 18 and Rwy 36 ends and shoulders have scattered soft sandy-clay. Rwy not marked with Xs to indicate condition.

COMMUNICATIONS: CTAF 122.9

PRESCOTT FSS (PRC) TF 1-800-WX-BRIEF. NOTAM FILE PRC.

KAYENTA RCO 122.45 (PRESCOTT FSS)

GILA BEND AF AUX (GBN) N32°53.25' W112°43.19' NOTAM FILE GBN.

PHOENIX

AIRSPACE: CLASS D opr during range periods only. Closed holidays. Other times class G.

H-4I, L-5B, A

GILA BEND MUNI (E63) 2 E UTC-7 N32°57.61' W112°40.42'

PHOENIX

789 B TPA-1589(800)

H-4I, L-5B, A

RWY 04-22: H5200X75 (ASPH) S-12.5 MIRL

RWY 04: PAPI(P2L)-GA 3.0° TCH 40'. Tree.

RWY 22: PAPI(P2L)-GA 3.0° TCH 40'. Tree.

AIRPORT REMARKS: Unattended. ACTIVATE MIRL Rwy 04-22-CTAF.

COMMUNICATIONS: CTAF/UNICOM 122.8

PRESCOTT FSS (PRC) TF 1-800-WX-BRIEF. NOTAM FILE PRC.

RCO 122.1R 116.6T (PRESCOTT FSS)

RADIO AIDS TO NAVIGATION: NOTAM FILE GBN.

(H) VORTAC 116.6 GBN Chan 113 N32°57.38' W112°40.46' at fld. 790/14E.

