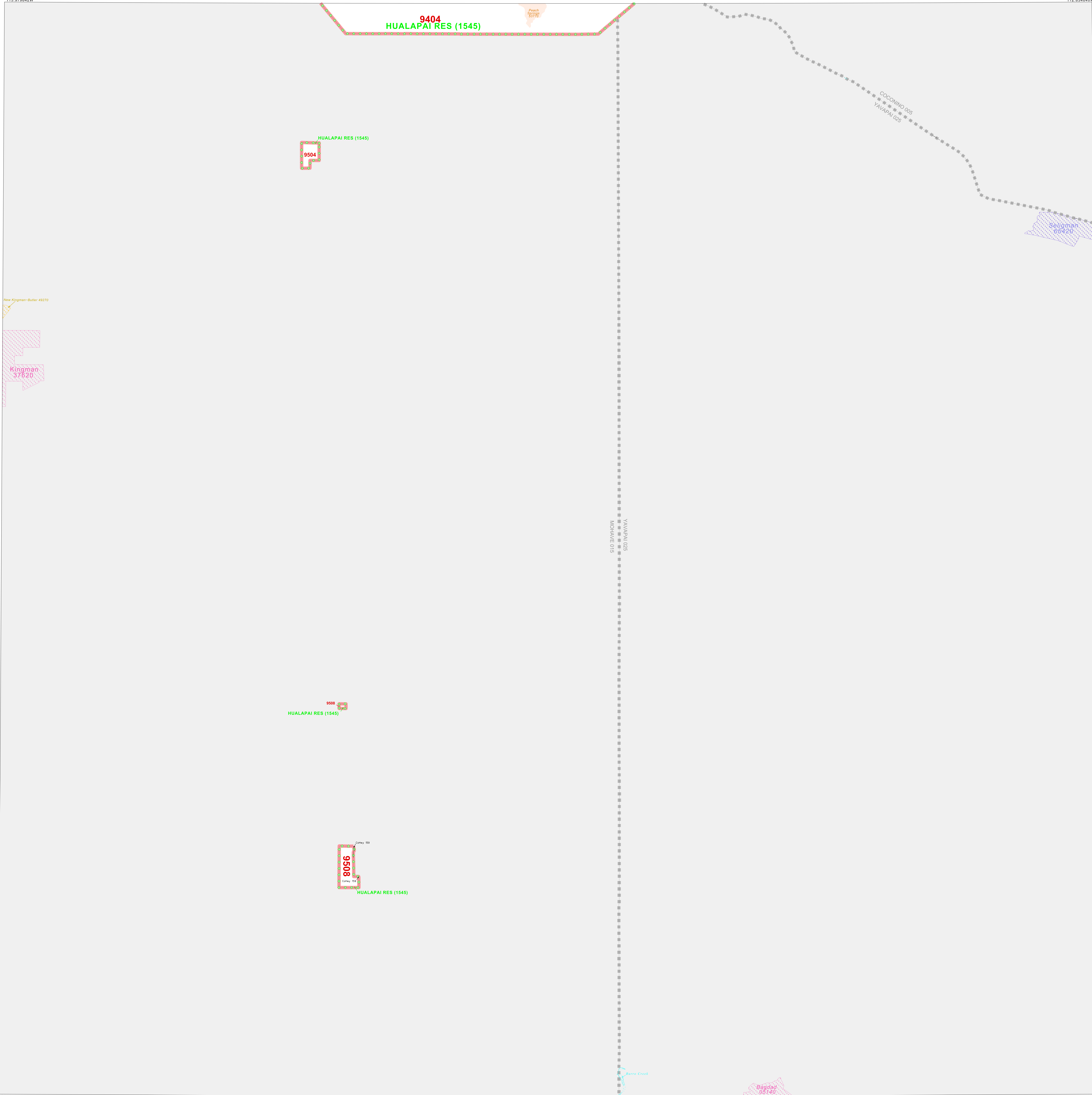


AMERICAN INDIAN TRIBAL CENSUS TRACT OUTLINE MAP (CENSUS 2000)

35.520484N
113.979842W

35.520484N
112.834640W



LEGEND

SYMBOL	NAME STYLE
*****	INTERNATIONAL
*****	AIR (FEDERAL)
*****	Trust Land
*****	OTSA / TDSA
*****	AMERICAN INDIAN TRIBAL SUBDIVISION
*****	AIR (State)
*****	SDA/SA
-----	STATE (or statistically equivalent entity)
-----	COUNTY (or statistically equivalent entity)
-----	Place within Subject Entity
-----	Incorporated Place / CDP
-----	Place outside of Subject Entity
-----	Incorporated Place / CDP
-----	Tribal Census Tract¹

ABBREVIATION REFERENCE: AIR = American Indian Reservation;
Trust Land = Off-Reservation Trust Land; OTSA = Oklahoma Tribal
Statistical Area; TDSA = Tribal Designated Statistical Area;
SDA/SA = State Designated American Indian Statistical Area;
CDP = Census Designated Place

FEATURES

All Roads	Stream/Shoreline
Railroad	Inter-Trust Stream
Pipe/Pump Line	River/Lake
Physical Feature	Glacier
Nonvisible Boundary	

Inset Out Area

¹ This map shows tribal census tract boundaries and numbers. A tribal census tract is a type of census tract defined within a federally recognized American Indian reservation or off-reservation trust land for the purpose of providing data based on an American Indian hierarchy rather than by state and county.

New Kingman-Butler 49270

Kingman 37620

YAVAPAI 025
MOHAVE 015

COCONINO 005
YAVAPAI 025

Seugman 66420

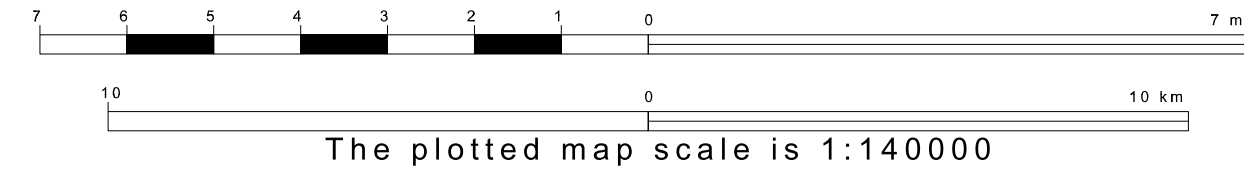
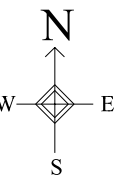
9509
HUALAPAI RES (1545)

9508
HUALAPAI RES (1545)

Bagdad 05140

34.584916N
113.979842W

34.584916N
112.834640W



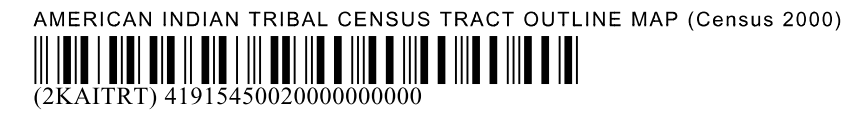
Key to Adjacent Sheets

1		
2		

Sheet Location within Entity

SHEET 2 OF 2 PARENT SHEETS
TOTAL SHEETS: 3 (Index 1; Parent 2; Inset 0)

ENTITY TYPE: American Indian Reservation
NAME: Hualapai Reservation and Off-Reservation Trust Land (1545)
ST: Arizona



All legal boundaries and names are as of January 1, 2000. The boundaries shown on this map are for Census Bureau statistical data collection and tabulation purposes only; their depiction and designation for statistical purposes does not constitute a determination of jurisdictional authority or rights of ownership or entitlement. Source: U.S. Census Bureau's TIGER database (Census 2000). Projection: State-based Albers' Equal Area. U.S. DEPARTMENT OF COMMERCE Economics and Statistics Administration U.S. Census Bureau