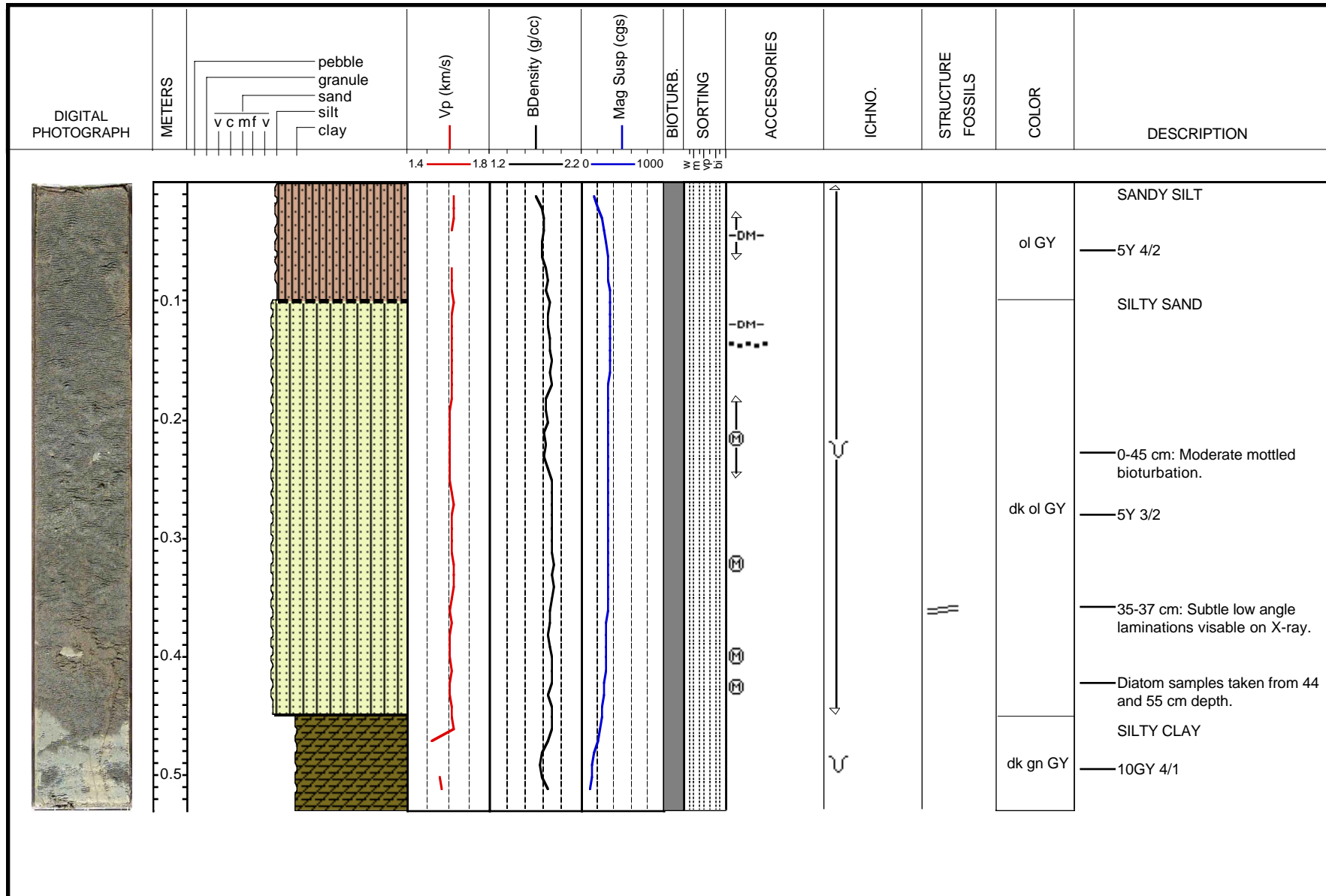


**U.S. Geological Survey  
MONTEREY BAY NATIONAL MARINE SANCTUARY PROJECT**

Water Depth: 101 meters  
Lat/Lon: 37.13727, -122.54629  
Collected: 9/4/1997

**P197MB - B598 SS (0-53 cm)**



[Return to Index Map](#)

[Return to Legend](#)