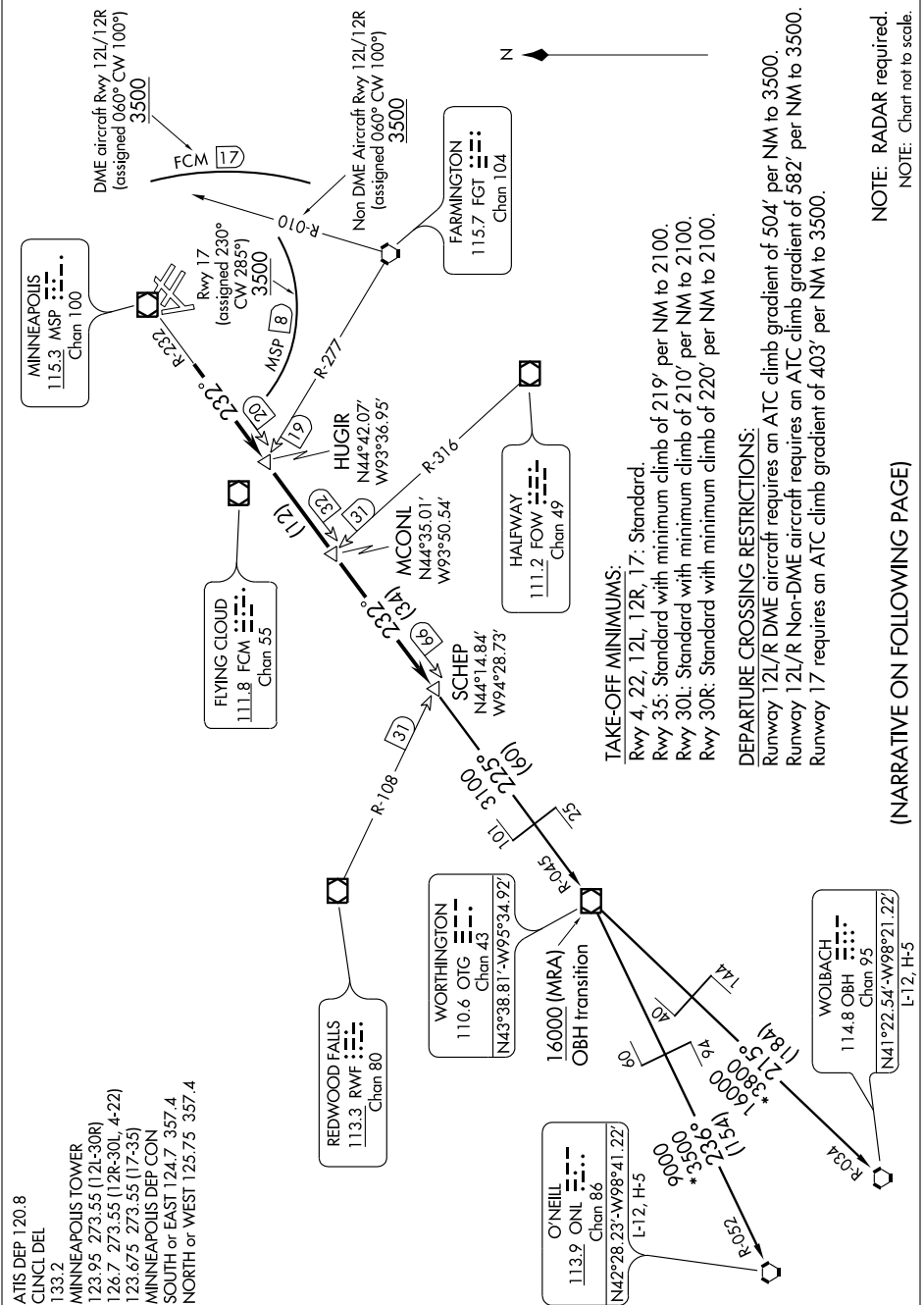


SCHEP TWO DEPARTURE

NC-1, 12 FEB 2009 to 12 MAR 2009

ATIS DEP 120.8
 CINCL DEL
 133.2
 MINNEAPOLIS TOWER
 123.95 273.55 (12L-30R)
 126.7 273.55 (12R-30L, 4-22)
 123.675 273.55 (17-35)
 MINNEAPOLIS DEP CON
 SOUTH or EAST 124.7 357.4
 NORTH or WEST 125.75 357.4



TAKE-OFF MINIMUMS:
 Rwy 4, 22, 12L, 12R, 17: Standard.
 Rwy 35: Standard with minimum climb of 219' per NM to 2100.
 Rwy 30L: Standard with minimum climb of 210' per NM to 2100.
 Rwy 30R: Standard with minimum climb of 220' per NM to 2100.

DEPARTURE CROSSING RESTRICTIONS:
 Runway 12L/R DME aircraft requires an ATC climb gradient of 504' per NM to 3500.
 Runway 12L/R Non-DME aircraft requires an ATC climb gradient of 582' per NM to 3500.
 Runway 17 requires an ATC climb gradient of 403' per NM to 3500.

NOTE: RADAR required.
 NOTE: Chart not to scale.

(NARRATIVE ON FOLLOWING PAGE)

NC-1, 12 FEB 2009 to 12 MAR 2009

SCHEP TWO DEPARTURE