

AMERICAN INDIAN TRIBAL CENSUS TRACT OUTLINE MAP (CENSUS 2000)

44 59184N  
90 894809W

44 59184N  
90 453207W

Granton  
38425

**LEGEND**

SYMBOL	NAME STYLE
☆☆☆☆	INTERNATIONAL
*****	AIR (FEDERAL)
◆◆◆◆◆	Trust Land
◇◇◇◇◇	OTSA / TDSA
●●●●●	AMERICAN INDIAN TRIBAL SUBDIVISION
////	AIR (State)
◇◇◇◇◇	SDA/ISA
////	STATE (or statistically equivalent entity)
■■■■■	COUNTY (or statistically equivalent entity)
□	Place within Subject Entity
□	Incorporated Place / GDP
□	Place outside of Subject Entity
□	Incorporated Place / GDP
■	<b>Tribal Census Tract<sup>1</sup></b>

ABBREVIATION REFERENCE: AIR = American Indian Reservation; Trust Land = Off-Reservation Trust Land; OTSA = Oklahoma Tribal Statistical Area; TDSA = Tribal Designated Statistical Area; SDA/ISA = State Designated American Indian Statistical Area; GDP = Census Designated Place

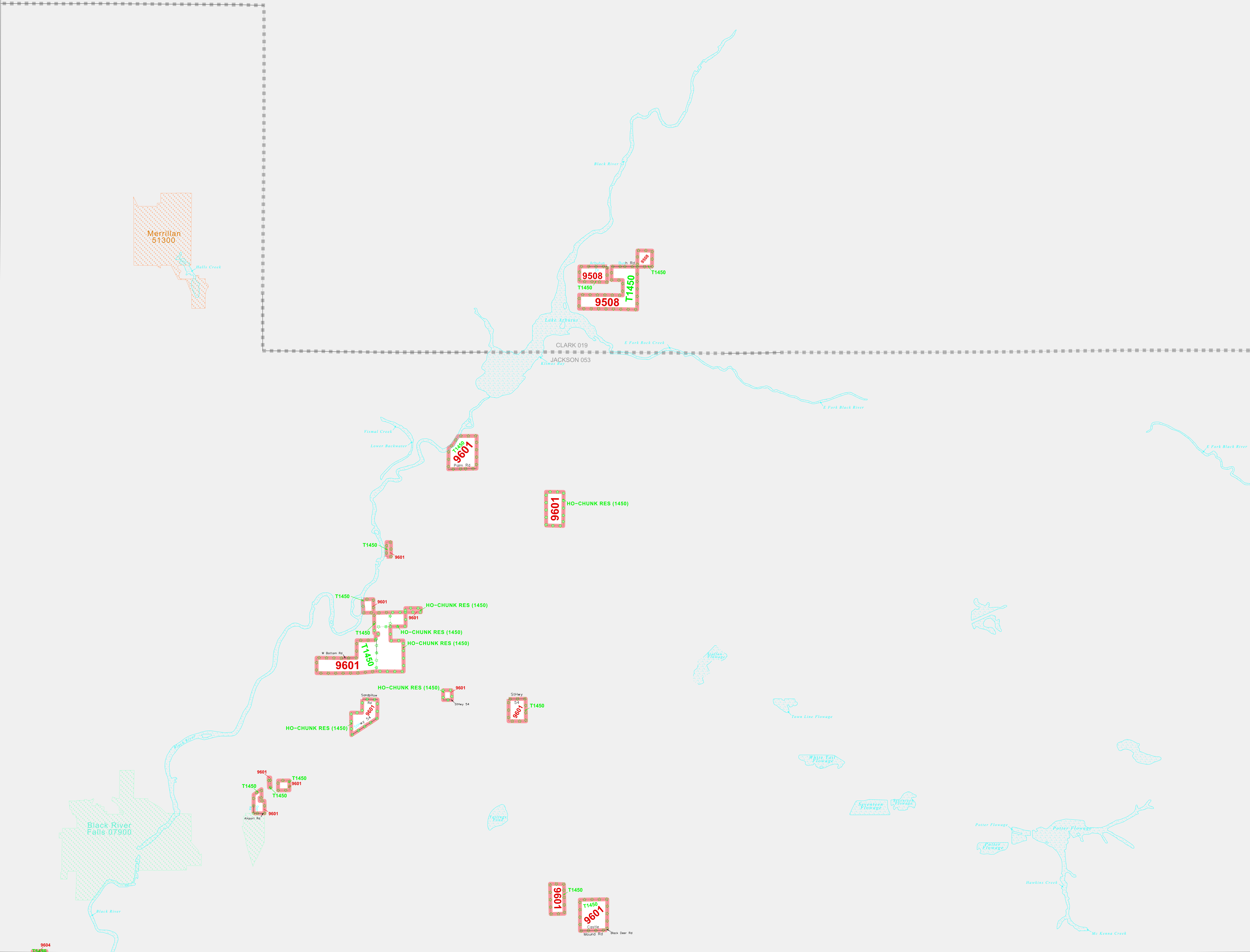
**FEATURES**

All Roads	Stream/Shoreline
Railroad	Intermittent Stream
Pipe/Pump Line	River/Lake
Physical Feature	Glacier
Nonvisible Boundary	

Inset    Out Area

<sup>1</sup> This map shows tribal census tract boundaries and numbers. A tribal census tract is a type of census tract defined within a federally recognized American Indian reservation or off-reservation trust land for the purpose of providing data based on an American Indian hierarchy rather than by state and county.

OFF-RESERVATION TRUST LAND NAMES  
T1450 Ho-Chunk



Key to Adjacent Sheets

1	2
3	4
6	8

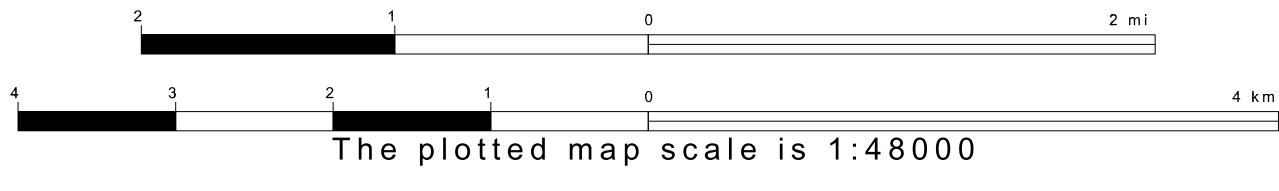
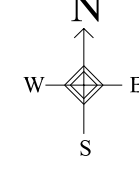
Sheet Location within Entity

1	2	3	4
5	6	7	8

SHEET 3 OF 15 PARENT SHEETS  
TOTAL SHEETS: 16 (Index 1; Parent 15; Inset 0)

44 271125N  
90 894809W

44 271125N  
90 453207W



ENTITY TYPE: American Indian Reservation  
NAME: Ho-Chunk Reservation and Off-Reservation Trust Land (1450)  
ST: Minnesota, Wisconsin

All legal boundaries and names are as of January 1, 2000. The boundaries shown on this map are for Census Bureau statistical data collection and tabulation purposes only; their depiction and designation for statistical purposes does not constitute a determination of jurisdictional authority or rights of ownership or entitlement. Source: U.S. Census Bureau's TIGER database (Census 2000). Projection: State-based Albers' Equal Area. U.S. DEPARTMENT OF COMMERCE Economics and Statistics Administration U.S. Census Bureau

