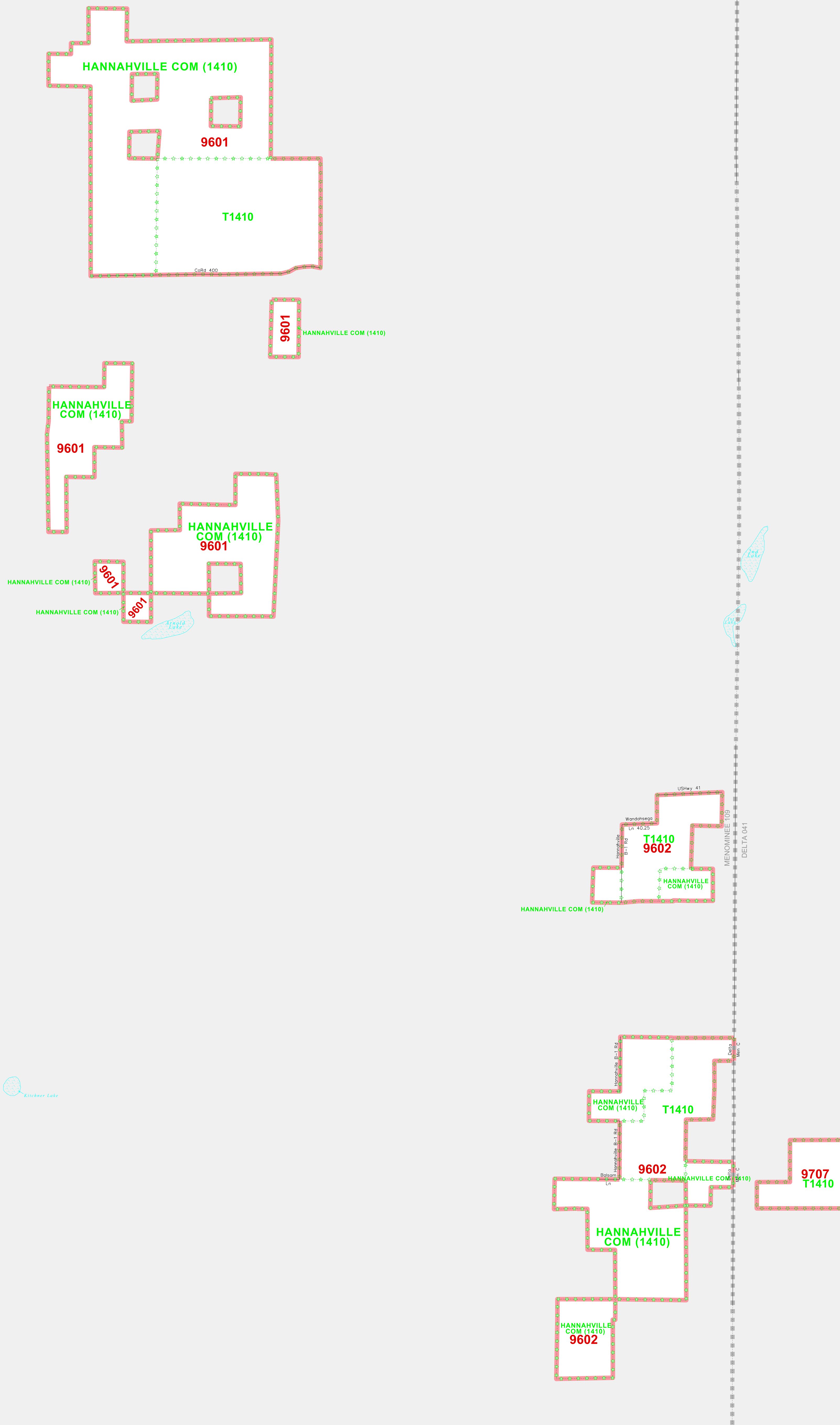


AMERICAN INDIAN TRIBAL CENSUS TRACT OUTLINE MAP (CENSUS 2000)

45 807900N  
87 510083W

45 807900N  
87 245230W



**LEGEND**

SYMBOL	NAME STYLE
*****	INTERNATIONAL
*****	AIR (FEDERAL)
*****	Trust Land
*****	OTSA / TDSA
*****	AMERICAN INDIAN TRIBAL SUBDIVISION
*****	AIR (State)
*****	SDA/SA
//////	STATE (or statistically equivalent entity)
	COUNTY (or statistically equivalent entity)
-----	Place within Subject Entity
-----	Incorporated Place / GDP
-----	Place outside of Subject Entity
-----	Incorporated Place / GDP
-----	<b>Tribal Census Tract<sup>1</sup></b>

ABBREVIATION REFERENCE: AIR = American Indian Reservation; Trust Land = Off-Reservation Trust Land; OTSA = Oklahoma Tribal Statistical Area; TDSA = Tribal Designated Statistical Area; SDA/SA = State Designated American Indian Statistical Area; GDP = Census Designated Place

**FEATURES**

All Roads	Stream/Shoreline
Railroad	Canal/Canal Stream
Pipe/Pump Line	River/Lake
Physical Feature	Glacier
Nonviable Boundary	

<sup>1</sup> This map shows tribal census tract boundaries and numbers. A tribal census tract is a type of census tract defined within a federally recognized American Indian reservation or off-reservation trust land for the purpose of providing data based on an American Indian hierarchy rather than by state and county.

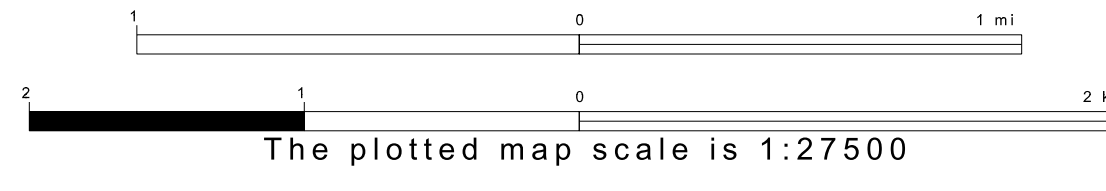
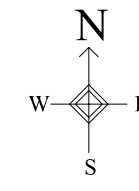
**OFF-RESERVATION TRUST LAND NAMES**  
T1410 Hannahville



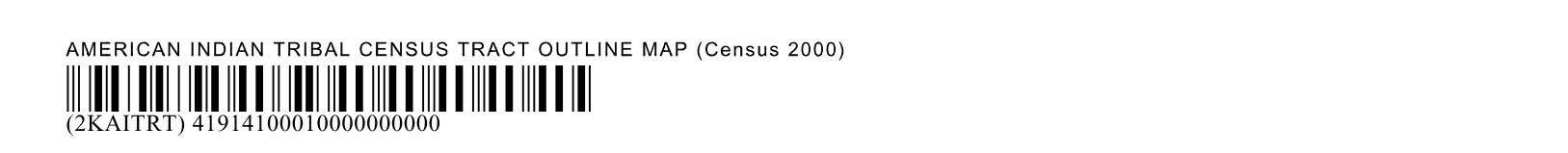
SHEET 1 OF 1 PARENT SHEET  
TOTAL SHEETS: 1 (Index 0; Parent 1; Inset 0)

45 834174N  
87 510083W

45 834174N  
87 245230W



ENTITY TYPE: American Indian Reservation  
NAME: Hannahville Community and Off-Reservation Trust Land (1410)  
ST: Michigan



All legal boundaries and names are as of January 1, 2000. The boundaries shown on this map are for Census Bureau statistical data collection and tabulation purposes only; their depiction and designation for statistical purposes does not constitute a determination of jurisdictional authority or rights of ownership or entitlement. Source: U.S. Census Bureau's TIGER database (Census 2000). Projection: State-based Albers Equal Area. U.S. DEPARTMENT OF COMMERCE Economics and Statistics Administration U.S. Census Bureau