

AMERICAN INDIAN TRIBAL CENSUS TRACT OUTLINE MAP (CENSUS 2000)

48 082247N  
89 890202W

48 082247N  
89 489147W

**LEGEND**

SYMBOL	NAME STYLE
*****	INTERNATIONAL
*****	AIR (FEDERAL)
*****	Trust Land
*****	OTSA / TDSA
*****	AMERICAN INDIAN TRIBAL SUBDIVISION
*****	AIR (State)
*****	SDA/ISA
-----	STATE (or statistically equivalent entity)
-----	COUNTY (or statistically equivalent entity)
-----	Place within Subject Entity
-----	Incorporated Place / GDP
-----	Place outside of Subject Entity
-----	Incorporated Place / CDP
-----	<b>Tribal Census Tract<sup>1</sup></b>

**ABBREVIATION REFERENCE:** AIR = American Indian Reservation; Trust Land = Off-Reservation Trust Land; OTSA = Oklahoma Tribal Statistical Area; TDSA = Tribal Designated Statistical Area; SDA/ISA = State Designated American Indian Statistical Area; CDP = Census Designated Place

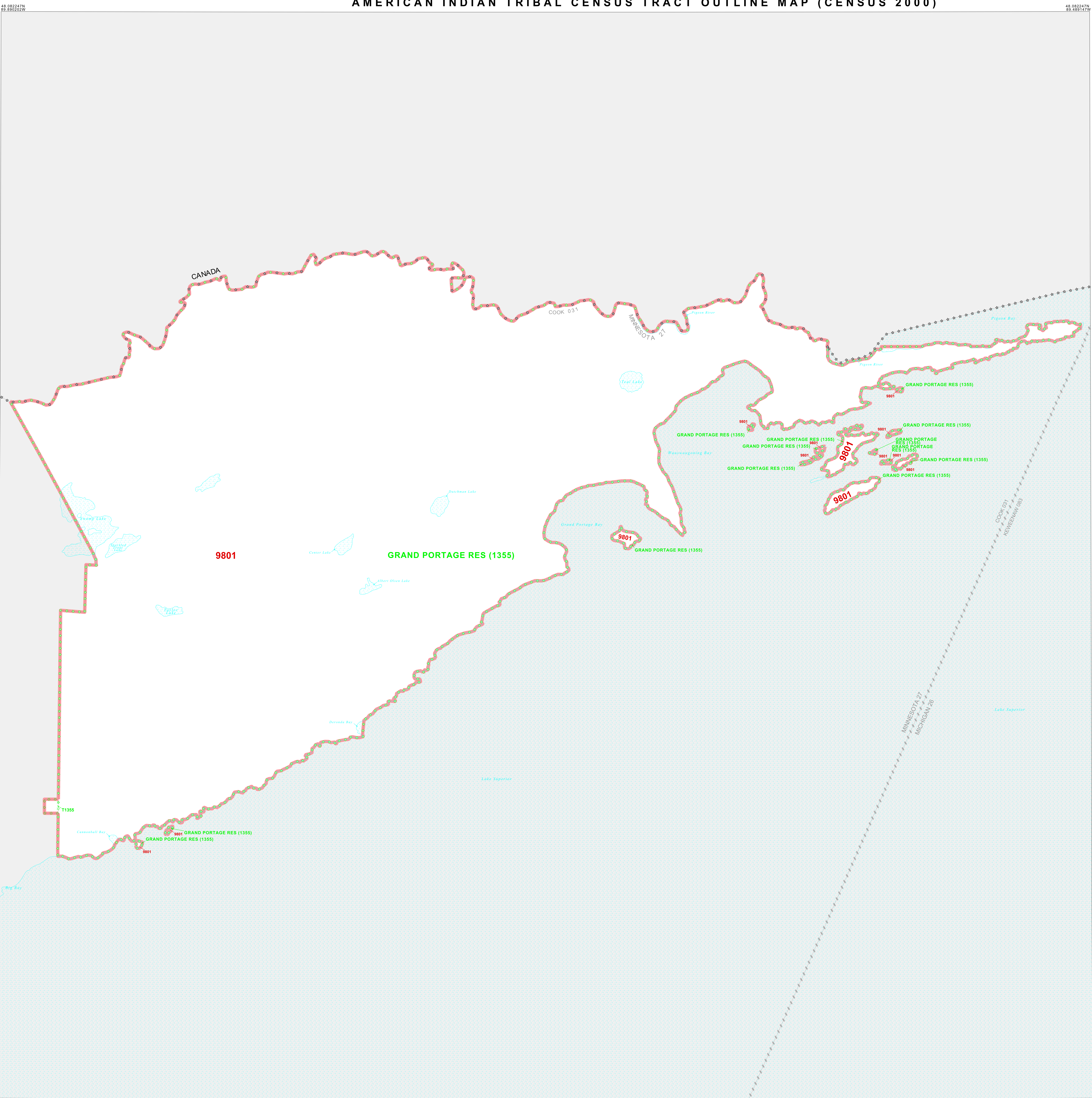
**FEATURES**

All Roads	Stream/Shoreline
Railroad	Canal/Canal Stream
Pipe/Power Line	River/Lake
Physical Feature	Glacier
Nonviable Boundary	

**Inset** **Out Area**

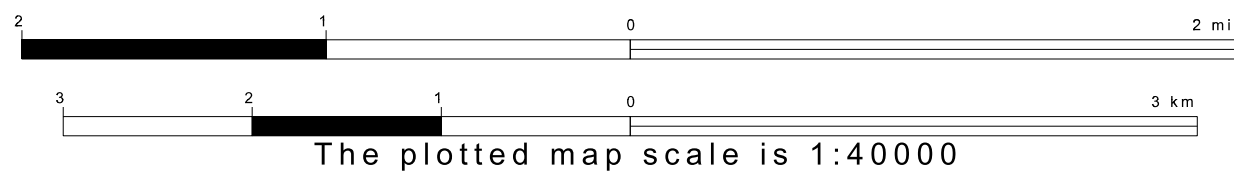
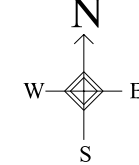
<sup>1</sup> This map shows tribal census tract boundaries and numbers. A tribal census tract is a type of census tract defined within a federally recognized American Indian reservation or off-reservation trust land for the purpose of providing data based on an American Indian hierarchy rather than by state and county.

**OFF-RESERVATION TRUST LAND NAMES**  
T1355 Grand Portage



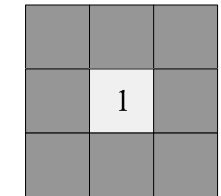
47 814507N  
89 890202W

47 814507N  
89 489147W



ENTITY TYPE: American Indian Reservation  
NAME: Grand Portage Reservation and Off-Reservation Trust Land (1355)  
ST: Minnesota

Key to Adjacent Sheets



SHEET 1 OF 1 PARENT SHEET  
TOTAL SHEETS: 1 (Index 0; Parent 1; Inset 0)

