

UNITED STATES DEPARTMENT OF AGRICULTURE

Farm Service Agency  
Washington, DC 20250

**Noninsured Crop Disaster Assistance  
Program for 2001 and Subsequent Years  
1-NAP (Revision 1)**

**Amendment 35**

**Approved by:** Deputy Administrator, Farm Programs



**Amendment Transmittal**

**A Reasons for Amendment**

All references to the "Entitlement Report" have been changed to "CCC-576E" and/or "NAP Estimated Calculated Payment Report".

Paragraph 1110 has been amended to provide additional reconciliation report messages.

Paragraph 1283.5 has been added to provide additional calculations when manually calculating the prevented planted acreage for multiple crop types within a pay group.

Paragraph 1315 has been amended to provide instructions for requesting authorization to issue 2005 payments once the automated software is disabled.

<b>Page Control Chart</b>		
<b>TC</b>	<b>Text</b>	<b>Exhibit</b>
9, 10	2-16.5, 2-16.6 10-1, 10-2 10-151, 10-152 10-289 through 10-300 10-326.5, 10-326.6 (add) 11-33, 11-34 11-39, 11-40 11-44.5 through 11-44.10 (add) 11-207 through 11-218 11-441 through 11-450 11-465 through 11-468 11-468.5, 11-468.6 (add) 11-469 through 11-502	1, pages 1-4



**Table of Contents (Continued)**

**Page No.**

**Part 11      Payment Processing**

**Section 1      NAP Payment Provisions**

1276	General Payment Provisions .....	11-1
1277	(Reserved)	
1278	NAP Payment Groupings .....	11-7
1279	Manual Payment Calculations .....	11-9
1280	Manual Payment Calculations for NAP Yield-Based Crops .....	11-10
1281	Manual Payment Calculations for NAP Value Loss Crops .....	11-21
1282	Manual Payment Calculations for Grazing Crops .....	11-25
1283	Manual Payment Calculations for NAP Yield-Based Crops - 2002 and Future Years .....	11-33
1283.5	Manual Payment Calculations for NAP Yield-Based Crops With Multiple Crop Types Having Prevented Planted Acres.....	11-44.5
1284	Manual Payment Calculations for NAP Value Loss Crops - 2002 and Future Years .....	11-45
1285-1309	(Reserved)	

**Section 2      Issuing NAP Payments**

1310	Overview .....	11-201
1311	Prerequisites for Issuing Payments .....	11-202
1312	Applying Payment Limitation .....	11-203
1313	Accessing the NAP Payment Software .....	11-204
1314	Payment Processing .....	11-205
1315	NAP Processing for Crop Years 2001 Through 2005 .....	11-208
1316-1320	(Reserved)	
1321	Issuing Payments .....	11-219
1322	Payment Selection Screen MHACPA01 .....	11-222
1323	Batch Check and Printing Control Screen MHACPN01 .....	11-224
1324	Calculating Payment Amounts for 2003 NAP .....	11-228
1325-1349	(Reserved)	

**Section 3      Canceling Payables**

1350	Canceling Erroneous Payables .....	11-295
1351	Canceling Payables Through the NAP Payment Application .....	11-298
1352	Cancellation Screen MHACPA02 .....	11-304
1353	Payable Cancellation Screen MHACOA01 .....	11-307
1354	Canceling NAP Payment Process .....	11-310
1355-1364	(Reserved)	

**Table of Contents (Continued)**

**Page No.**

**Part 11      Payment Processing (Continued)**

**Section 4      Overpayment Processing**

1365	General Overpayment Provisions .....	11-333	
1366	Charging Interest .....	11-335	
1367	Debt Basis Codes .....	11-336	
1368-1370 (Reserved)			
1371	Accessing Overpayment Software .....	11-345	
1372	Computing Overpayments .....	11-346	
1373	Transferring Overpayment Amount to CRS .....	11-348	
1374-1376 (Reserved)			
1377	Overpayment Selection Screen MHACPA01 .....	11-359	
1378	Overpayment Transfer Selection MHACOE02 .....	11-361	
1379	Overpayment Transfer Confirmation Screen MHACOF01 .....	11-363	
1380	Batch Overpayment Printing Control Screen MHACON01 .....	11-369	
1381-1384 (Reserved)			
1385	Canceling Overpayments .....	11-379	
1386	Cancellation Selection Screen MHACPA02 .....	11-382	
1387	Overpayment Cancellation Screen MHACOS01 .....	11-385	
1388	Overpayment Register .....	11-387	
1389	Overpayment Register Messages .....	11-389	
1390-1399 (Reserved) .....			11-391

**Section 5      Payment Registers and Reports**

1400	Overview .....	11-441
1401-1405 (Reserved)		
1406	PPH Print .....	11-451
1407	Printing PPH .....	11-455
1408-1412 (Reserved)		
1413	CCC-576E, NAP Estimated Calculated Payment Report.....	11-465
1414	Printing CCC-576E's .....	11-482
1415-1424 (Reserved)		
1425	Pending Payment Registers .....	11-503
1426-1430 (Reserved)		
1431	Nonpayment Register .....	11-515
1432	Nonpayment Register Messages .....	11-515
1433-1444 (Reserved)		

**Section 6      Recovery Process**

1445	Using the Recovery Process .....	11-543
1446	Diagnostic Report .....	11-544

**25.4 Prevented Planting for 2007 and Future Years (Continued)**

**F Ineligible Acreage for Prevented Planting**

Acreage ineligible for NAP prevented planting includes, but is not limited to:

- acreage for which the provisions of 2-CP, subparagraph 24 D are not met
- value loss crops, including, but not limited to, Christmas trees, aquaculture, and ornamental nurseries
- uninsured crop acreage that is unrated for insurance purposes
- acreage planted during the late-planting period.

**G Calculating Prevented Planting Payments**

Subject to limitations, availability of funds, and specific provisions dealing with specific crops, a payment for prevented planting is determined according to the following.

Step	Action
1	Add the total planted and approved prevented planted acres.
2	Multiply the result of step 1 by “.35”.
3	Subtract the result of step 2 from the approved prevented planted acres.
4	Multiply the producer’s share by the approved yield by the positive result of step 3.
5	Multiply the producer’s share by the assigned production, if any.
6	Subtract the result of step 5 from the result of step 4.
7	Multiply the result of step 6 by the final payment price (market price times “.55” times prevented planting factor).

**Notes:** Yields for purposes of prevented planting payments shall be calculated in the same manner as for low-yield claims.

\*--Additional calculations are required when there are multiple crop types within a pay group. See paragraph 1283.5 for additional calculations.--\*

## 25.5 Late Planting

### A Background

Loss of production for a crop may be attributed to both a natural disaster and/or a management decision to plant the crop late. Late planting provisions provide reduced coverage for eligible crop acreage planted during the applicable late planting period. For previous crop years, NAP has not provided coverage for those crops that were planted after the \* \* \* final planting dates. Beginning with the 2002 crop year, NAP will cover crops planted after the final planting date according to subparagraph B.

**Notes:** Crops not planted by the \* \* \* final planting date because of a natural disaster but planted during the late planting period will not be eligible for prevented planting payments.

Producers unable to plant the crop by the \* \* \* final planting date, because of a natural disaster, must provide a notice of loss within 15 calendar days of the final planting date to maintain eligibility for prevented planting benefits in the event the crop is not planted during the late planting period.

**Part 10 County Office Software Operations****Section 1 National Crop Table****751 Overview****A Introduction**

NCT is a web-based application and an intranet process that will be used for all programs requiring price and yield data, such as NAP and future disaster programs.

For NAP purposes, NCT will be used to recommend and approve crop data as well as maintain a historical database for prices and yields. The records will be validated against the crop codes according to Exhibits 7, 7.5, 7.6, or 7.7, as applicable, and 2-CP, Exhibit 10.5, FIPS codes, and insurability file when it becomes available. National, State, and County Office personnel will have access to NCT to view, change, and add crop records.

**B National Crop Table Security**

Security is enforced to ensure that a user can only update crop records for their respective State or County Office.

Authorized users:

- will have the capability to access NCT to add and modify crop records **only** for their State or County Office and to view crop records for all States nationwide
- are provided access through previously established accounts and passwords.

Authenticated users will **only** have the capability to view crop records.

**Note:** If the State Office needs additional users, the office must send an e-mail to **\*--steve.peterson@wdc.usda.gov** including the full name, last 4 digits of the Social--\* Security number, and level of security (county or State) required so that a user ID and password can be provided.

751 Overview (Continued)

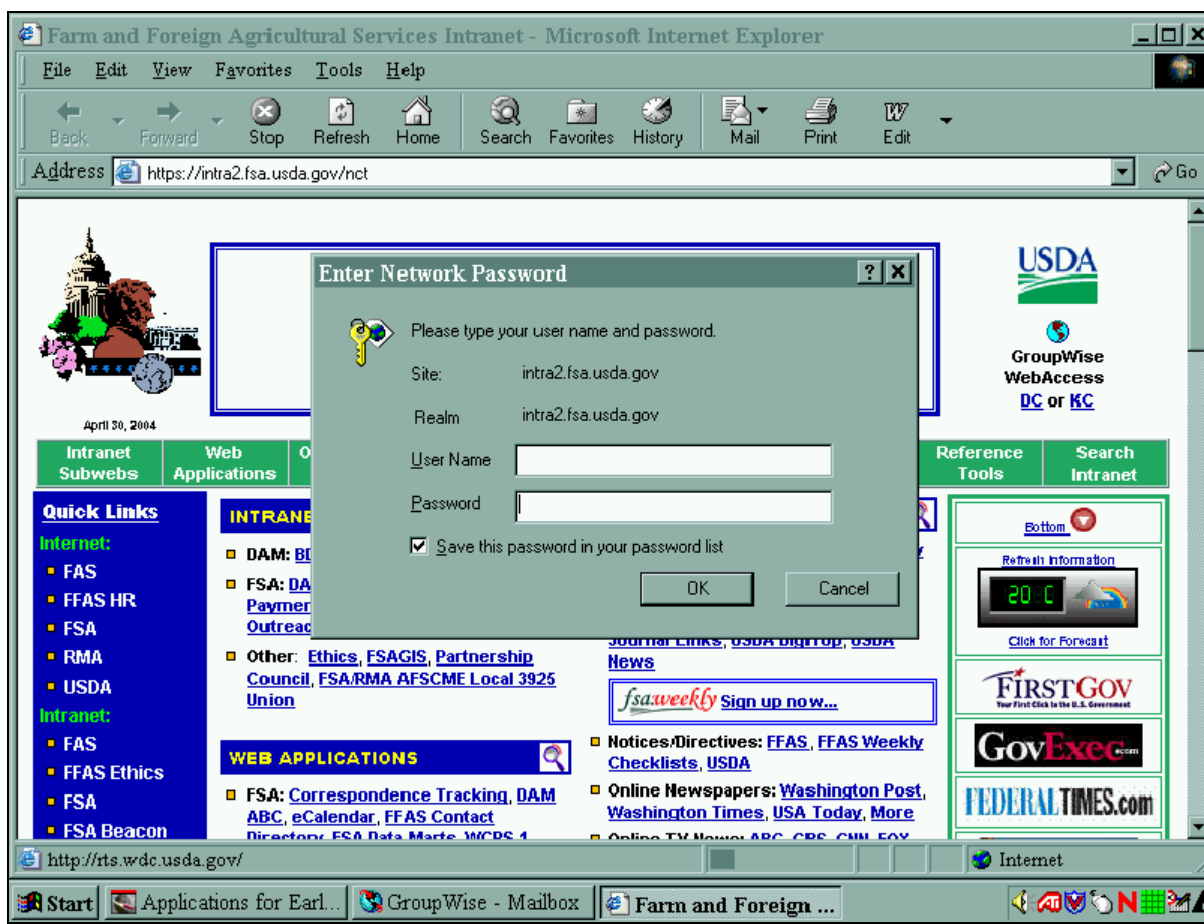
C Accessing the National Crop Table Web Site

Access NCT from the intranet at <https://intra2.fsa.usda.gov/nct>.

**Note:** NCT web page was created using the Internet Explorer. When using the Internet Explorer, the user shall ensure the “Back” button on the NCT screen is used. The “Back” button on the browser should never be used because undetected errors will occur. Netscape Navigator should never be used when accessing NCT.

After entering the web site location, users will be prompted with the following message requesting a user name and password to sign on.

**\*--Note:** A user can change the password from the Intranet at <https://intra2.fsa.usda.gov/pwd>.\*





Section 4 CCC-471

881 Accessing NAP CCC-471 Software

A Accessing Software

From Menu FAX250, access NAP software according to the following table.

Step	Menu	Action
1	FAX250	ENTER "3" or "4", "Application Processing", as applicable and PRESS "Enter".
2	FAX09002	Enter the appropriate county on the Office Selection Menu, if applicable, and PRESS "Enter".
3	FAX07001	ENTER "11", "PFC/Compliance", and PRESS "Enter".
4	M00000	ENTER "1", "NAP and Disaster", and PRESS "Enter".
5	MH0000	ENTER "2", "Non-Insured Assistance Program", and PRESS "Enter".
6	MHB0YR	*--Select the applicable crop year and PRESS "Enter". NAP Menu MHB000 will be displayed.

B Example of NAP Menu MHB000

The following is an example of NAP Menu MHB000.

```

COMMAND                                MENU: MHB000                                F6
2001 NAP Menu
-----
      1. Application for Coverage
      2. Unit Maintenance
    * 3. Approved Yield Maintenance
      4. Notice of Loss and Application for Payment
      5. Record Gross Revenue for Ineligible Members
      6. Payment Processing
      7. Reports
    * 8. Spot Check Selection Process

     21. Return to Application Selection Menu
     23. Return to Primary Selection Menu
     24. Sign Off

Cmd3=Previous Menu                                *=Option currently not available.

Enter option and press "Enter".
    
```

--\*

881 Accessing NAP CCC-471 Software (Continued)

C Options on NAP Menu MHB000

This table lists the options that are available on NAP Menu MHB000.

Action	Result	Option Is Used For
ENTER "1", "Application for Coverage", and PRESS "Enter".	Producer Selection Screen MHACAA01 will be displayed.	Taking the producer's CCC-471.
ENTER "2", "Unit Maintenance", and PRESS "Enter".	Unit Maintenance Producer Selection Screen MHACU101 will be displayed.	Updating units.
ENTER "3", "Approved Yield Maintenance", and PRESS "Enter".	This option currently not available.	
ENTER "4", "Notice of Loss and Application for Payment", and PRESS "Enter".	NAP Notice of Loss and Application for Payment Menu MHACL0 will be displayed.	Entering: <ul style="list-style-type: none"> <li>• Notice of Loss data</li> <li>• Application for Payment data.</li> </ul> Approving/disapproving: <ul style="list-style-type: none"> <li>• Notice of Loss</li> <li>• Application for Payment.</li> </ul>
ENTER "5", "Record Gross Revenue for Ineligible Members", and PRESS "Enter".	Joint Operation Selection Screen MHACP501 will be displayed.	Loading members of joint operations that exceed the gross revenue requirement.
ENTER "6", "Payment Processing", and PRESS "Enter".	NAP Payment Processing Main Menu MHACP0 will be displayed.	<ul style="list-style-type: none"> <li>• Issuing payments.</li> <li>• Canceling payments.</li> <li>•*--Printing CCC-576E.--*</li> <li>• Printing PPH.</li> </ul>
ENTER "7", "Reports", and PRESS "Enter".	NAP Reports Menu MHACR0 will be displayed.	Printing the: <ul style="list-style-type: none"> <li>• National Crop Table Report</li> <li>• blank CCC-471</li> <li>• blank CCC-576</li> <li>• producer CCC-471's</li> <li>• producer CCC-576's</li> <li>• Reconciliation Report</li> <li>• Producer CCC-471 Summary</li> <li>• County Office Application for Coverage Summary</li> <li>• 200X Continuous Coverage Reminder Letter</li> <li>• Approved Yield Review Register.</li> </ul>
ENTER "8", "Spot Check Selection Process", and PRESS "Enter".	This option currently not available	

**\*--1016 Entering Enrollment/Approval/Disapproval Dates**

**A Overview**

Applications for NAP will be enrolled and approved or disapproved for program benefits by unit number, pay crop, pay type, and planting period.

To update enrollment/approval/disapproval dates, select option 4, "Approve/ Disapprove Application for Payment", on NAP Notice of Loss and Application for Payment Menu MHACL0. Enrollment/Approval/Disapproval Screen MHACWM01 will be displayed.

**B Example of Screen MHACWM01**

The following is an example of Enrollment/Approval/Disapproval Screen MHACWM01.

```

2001 NAP                107-A TULARE                Entry                MHACWM01
Enrollment/Approval/Disapproval Screen Version:AE36  01/14/2002 10:44 Term F5
-----
Producer SAMUEL J MILLER
-----
Unit      Crop      Crop/Type  Planting  Enrollment  Approval  Disapproval
          Pay      Period     Date      Date        Date
          (MMDDCCYY) (MMDDCCYY) (MMDDCCYY)
000088   ALFAL    0027/001   01        .....
000199   ALFAL    0027/001   01        .....
000199   SORGF    0050/001   01        .....
000199   GRASS    0102/001   01        .....
000199   MIXFG    0296/001   01        .....

Cmd4=Previous Screen  Cmd5=Update  Cmd7=End  Cmd12=Print Ent Report
    
```

--\*

**1016 Entering Enrollment/Approval/Disapproval Dates (Continued)****C Action**

County Offices shall:

- enter enrollment date, if not previously entered on Screen MHACWD0F
- enter approval date, if COC approved the application
- enter disapproval date, if COC disapproved the application
- PRESS “Cmd4” to return to Producer Selection Screen MHACWA01
- PRESS “Cmd5” to update dates

**Notes:** “Cmd5” must be pressed to update records before the “roll-page” option is selected. Any data entered and not updated before using the “roll-page” option will not be retained in the system.

To remove a date previously updated, field exit through the date and PRESS “Cmd5”. The record will be updated without a date.

- PRESS “Cmd7” to end; records will not be updated
- \*--PRESS “Cmd12” to print the NAP Estimated Calculated Payment Report--\*
- Roll-Page to view additional records.

**Note:** The enrollment date, approval date, and disapproval date cannot be entered if the question on Screen MHACWD0E has been answered with “Y”.

**D Updating or Adding Applications After Approval Date Is Entered**

Since applications are being approved on a unit/pay crop/pay type/planting period basis, the approval date will be removed from all records in the pay grouping if any record within the pay grouping is modified or added.

Upon COC approval, County Offices shall enter the revised COC approval date into the system.

If a crop type that contains prevented planted acres is added to an application after the application was already approved, the County Office shall access all other crop types in the pay group that contain prevented planted acres and PRESS “Cmd5”. This will recalculate the eligible prevented planted acres.

**1017-1100 (Reserved)**

1110 Reconciliation Report (Continued)

D Reconciliation Report Messages (Continued)

\*--

Message	Reason for Message	County Office Action
Prevented Planted Payment Factor on Application for Payment does match the Prevented Planted Payment Factor on the National Crop Table for "CROP NAME" and "CROP TYPE" for "UNIT NUMBER"	Application for Payment with a stage of "PP" has a different prevented planted payment factor in the application for payment file compared to the prevented planted payment factor in the national crop table record.	Access the Application for Payment, and PRESS "Cmd5" on Load Acres/Production Screen MHACWD01 to update the record.
Payment Rate on Appl. for Payment does match the Payment Rate on the NCT for "Abbr. CROP NAME" and "CROP TYPE" for "UNIT NUMBER"	A crop type with a stage of "PP" has a different payment rate in the Application for Payment File compared to the prevented planted payment factor in the national crop table record.	Access the Application for Payment, and PRESS "Cmd5" on Load Acres/Production Screen MHACWD01 to update the record.
Appl. for Payment does not contain the current status of the Notice of Loss for "Abbr. CROP NAME" and "CROP TYPE" for "UNIT NUMBER"	Application for Payment does not reflect the current status of the notice of loss.	Access the Application for Payment and PRESS "Cmd5" on Load Acres/Production Screen MHACWD01 to update the record.

--\*



**1283 Manual Payment Calculations for NAP Yield-Based Crops - 2002 and Future Years**

**A Introduction**

CCC-576A is used:

- for yield-based crops only
- to determine whether a specific type and final use of a defined crop has incurred a qualifying loss for payment
- for harvested, unharvested, and prevented planted acreage.

**\*--Note:** CCC-576A-1 will also be used when there are multiple crop types within a pay group with prevented planted acreage.--\*

Complete a separate line entry on CCC-576A for each crop type and final use for the specified crop (pay group) for the producer's unit. All acres and production from all types of the crop must be accounted for.

**\*--1283 Manual Payment Calculations for NAP Yield-Based Crops - 2002 and Future Years (Continued)**

**B Completing CCC-576A**

Follow the instructions in this table to complete CCC-576A.

**Note:** Unless otherwise specified, all calculations should be rounded to 2 decimal places.

Item	Instructions
1 and 2	Enter the State and county codes from CCC-576, item 1B.
3	Enter the producer's name from CCC-576, item 23.
4	Enter the producer's ID number from CCC-576, item 24.
5	Enter the unit number for the producer and crop from CCC-576, item 2.
6	Payment level is 55 percent.
7	Enter the name of the crop from CCC-576, item 8 A.
8	Enter the crop code corresponding with the crop name from CCC-576, item 8 A.
9	Enter the payment crop code from the crop table for the crop, crop type, final use, and practice. See paragraph 1278 for additional information on payment groupings.
10	Enter the payment type code from the crop table for the crop, crop type, final use, and practice. See paragraph 1278 for additional information on payment groupings.
11	Enter the planting period for the crop and crop type from CCC-576, item 7D.
<b>Parts A and B - Items 12 through 25 are for harvested and unharvested acreage only.</b>	
12	Enter the crop type name or abbreviation for the crop from CCC-576, item 29.
13	Enter the final use for the crop from CCC-576, item 36.
14	Enter the practice from CCC-576, item 32 for the crop type and final use.  <b>Note:</b> A separate line entry shall be completed, if the producer has both irrigated and nonirrigated acres.
15	Enter the producer's share from CCC-576, item 30 for the crop type. Enter up to 4 decimal places.

--\*



\*--1283 Manual Payment Calculations for NAP Yield-Based Crops - 2002 and Future Years  
(Continued)

B Completing CCC-576A (Continued)

Item	Instructions
<b>Part C - Items 26 through 40 are for prevented planted acreage only.</b>	
26	Enter the crop type name or abbreviation from CCC-576, item 29 for the crop type.
27	Enter the final use for the crop from CCC-576, item 36.
28	Enter the practice from CCC-576, item 32 for the crop type and final use.  <b>Note:</b> A separate line entry shall be completed if the producer has both irrigated and nonirrigated acres.
29	Enter the producer's share from CCC-576, item 30 for the crop type. Enter up to 4 decimal places.
30	Enter the approved yield according to paragraph 254.
31	Enter the total planted acres for the crop from CCC-576, item 15 B.
32	Enter the prevented planted acres for the crop from CCC-576, item 15 A.
33	Calculate the intended acres by adding the following:  <ul style="list-style-type: none"> <li>• planted acres recorded in item 31, plus</li> <li>• prevented planted acres recorded in item 32.</li> </ul> <b>Note:</b> Planted acres recorded in item 31 shall be the total planted acres for all crop types in the pay group with the exception of planted acres meeting the criteria in paragraph 25.
34	Calculate the disaster level by multiplying the following:  <ul style="list-style-type: none"> <li>• result of item 33, times</li> <li>• 35 percent.</li> </ul>

--\*

1283 Manual Payment Calculations for NAP Yield-Based Crops - 2002 and Future Years  
(Continued)

B Completing CCC-576A (Continued)

Item	Instructions
35	<p>Calculate the eligible prevented planted acres by subtracting the following:</p> <ul style="list-style-type: none"> <li>• prevented planted acres recorded in item 32, minus</li> <li>• disaster level determined in item 34.</li> </ul> <p><b>*--Note:</b> See paragraph 1283.5 for determining eligible prevented planted acres when there are multiple crop types within a pay group.--*</p>
36	<p>Enter the assigned production for the crop from CCC-576, item 39.</p>
37	<p>Calculate the net production for payment by completing the following:</p> <ul style="list-style-type: none"> <li>• share recorded in item 29, times</li> <li>• approved yield recorded in item 30, times</li> <li>• eligible prevented planted acres determined in item 35, minus</li> <li>• assigned production in item 36.</li> </ul>
38	<p>Enter the payment rate for the crop code, crop type, and final use from the crop table.</p>
39	<p>Enter the approved prevented planted payment factor from the crop table for the crop and crop type.</p>
40	<p>Determine the calculated payment for each prevented planted line item by multiplying the following:</p> <ul style="list-style-type: none"> <li>• net production for payment determined in item 37, times</li> <li>• payment rate recorded in item 38, times</li> <li>• payment factor recorded in item 39, times</li> <li>• payment level of 55 percent from item 6.</li> </ul> <p>Round the result to whole dollars.</p> <p><b>Note:</b> If the Notice of Loss is not approved or is not on file for the crop and crop type, and the calculated payment results in a positive amount, the calculated payment shall equal zero.</p>

**\*--1283.5 Manual Payment Calculations for NAP Yield-Based Crops With Multiple Crop Types Having Prevented Planted Acres**

**A Introduction**

When calculating payments for multiple crop types with prevented planted acres, additional calculations are required for the pay group.

CCC-576A-1 shall be used:

- when the pay group has multiple crop types with prevented planted acres
- to determine whether the pay group has eligible prevented planted acres
- to determine a ranking for each crop type based on highest to lowest value for each crop type.--\*

**\*--1283.5 Manual Payment Calculations for NAP Yield-Based Crops With Multiple Crop Types Having Prevented Planted Acres (Continued)**

**B Completing CCC-576A-1**

Complete CCC-576A-1 according to the following. Unless otherwise specified, all calculations should be rounded to 2 decimal places.

Item	Instructions
1 and 2	Enter the State and county codes from CCC-576, item 1 B.
3	Enter the producer's name from CCC-576, item 23.
4	Enter last 4 digits of the producer's ID number from CCC-576, item 24.
5	Enter the unit number for the producer and crop from CCC-576, item 25.
6	Enter the name of the crop from CCC-576, item 8 A.
7	Enter the pay crop code from the crop table for the crop, crop type, final use, and practice, CCC-576, item 26. See paragraph 1278 for additional information on payment groupings.
8	Enter the pay type from the crop table for the crop, crop type, final use, and practice, CCC-576, item 27. See paragraph 1278 for additional information on payment groupings.
9	Enter the planting period for the crop and crop type from CCC-576, item 28.
<b>Items 10 through 14 calculations are used to determine prevented planted eligibility.</b>	
10	Enter the total number of planted acres from CCC-576 for all crop types in the pay group.
11	Enter the total number of prevented planted acres from CCC-576 for all crop types in the pay group.
12	Determine the intended acres by adding the following: <ul style="list-style-type: none"> <li>• planted acres recorded in item 10, plus</li> <li>• prevented planted recorded in item 11.</li> </ul>
13	Calculate the disaster level by multiplying: <ul style="list-style-type: none"> <li>• intended acres determined in item 12, times</li> <li>• 35 percent.</li> </ul>
14	Enter the eligible prevented planted acres by calculating: <ul style="list-style-type: none"> <li>• prevented planted acreage in item 11, minus</li> <li>• disaster level determined in item 13.</li> </ul> <p><b>Note:</b> If the result is a negative number, the producer is not eligible for prevented planted acres and no further calculation is required.</p>

--\*

**\*--1283.5 Manual Payment Calculations for NAP Yield-Based Crops With Multiple Crop Types Having Prevented Planted Acres (Continued)**

**B Completing CCC-576A-1 (Continued)**

Item	Instructions
<b>Items 15 through 21 are used to determine the highest value prevented planted crop within a pay group.</b>	
15	Enter the crop type name or abbreviation from CCC-576, item 29 for the crop type.
16	Enter the number of prevented planted acres for the crop type
17	Enter the approved yield according to paragraph 254.
18	Enter the payment rate for the crop code, crop type, and final use from the NCT.
19	Enter the prevented planted payment factor from the NCT for the crop, crop type, and final use.
20	<p>Determine the value for each prevented planted crop type by multiplying the following:</p> <ul style="list-style-type: none"> <li>• approved yield in item 17, times</li> <li>• payment rate recorded in item 18, times</li> <li>• payment factor recorded in item 19.</li> </ul> <p>Round the result to whole dollars.</p>
21	<p>The crop type with the highest value shall be ranked number 1 and second highest valued crop should be ranked 2. Continue ranking all crop types from highest to lowest value.</p> <p><b>Note:</b> On the CCC-576A, item 35 enter the prevented planted acres of the highest ranking crop type, up to the number of available prevented planted acres for that crop type. Continue to allocate the prevented planted acres for each crop type, not to exceed the total determined eligible prevented planted acres determined in item 14.</p>

--\*

**\*--1283.5 Manual Payment Calculations for NAP Yield-Based Crops With Multiple Crop Types Having Prevented Planted Acres (Continued)**

**C Example Calculation**

A producer submits an application for payment with the following acres for multiple crop types within the same pay group:

- 50 planted acres – sorghum forage
- 200 prevented planted acres (crop types SWI 50 acres and SUD 150 acres).

Step	Calculation
1	250 intended acres are determined by adding the following: <ul style="list-style-type: none"> <li>• 50 total planted acres, from CCC-576</li> <li>• 200 total prevented planted acres, from CCC-576.</li> </ul>
2	87.5 disaster level acres are determined by multiplying: <ul style="list-style-type: none"> <li>• 250 intended acres, determined in step 1, times</li> <li>• 35 percent.</li> </ul>
3	112.5 eligible prevented planted acres are determined by subtracting: <ul style="list-style-type: none"> <li>• 200 total prevented planted acres, minus</li> <li>• 87.5 disaster level acres, determined in step 2.</li> </ul>
4	The highest value crop is determined by calculating the payment for each crop type by multiplying the following for the crop type: <ul style="list-style-type: none"> <li>• approved yield, times</li> <li>• payment rate, times</li> <li>• payment factor.</li> </ul> <p><b>Example:</b> The crop value for the 2 crop types are:</p> <ul style="list-style-type: none"> <li>• SWI - \$623 (6.4 x 97.4400 x 1.000)</li> <li>• SUD - \$363 (5.4 x 97.4400 x .6900).</li> </ul> <p>In this example, the highest value crop is SWI and the next highest value crop is SUD. SWI is ranked number 1 and SUD is ranked number 2.</p>
5	<ul style="list-style-type: none"> <li>• Enter 50 acres in CCC-576A, item 35. This is the number of prevented planted acres for highest ranking crop type (SWI).</li> <li>• Enter 62.5 acres in the CCC-576A, item 35 for the number 2 ranked crop type.</li> </ul> <p><b>Note:</b> 62.5 acres was determined by subtracting the remaining eligible prevented planted acres of 112.5 minus 50 acres already allocated. Although there are 150 prevented planted acres for SUD, only 62.5 acres can be allocated to ensure that the total eligible prevented planted acres are not exceeded.</p>

--\*







1314 Payment Processing (Continued)

A Computing Payment (Continued)

Step	Action Performed by the System
8	Reads the payment limitation file to determine the effective payment limitation for multi-county producers and members of combinations.
9	Determines prior payments issued to the producer or member. If the producer or member received payments, the prior payments are accumulated first by crop type and then by payment grouping.
10	<p>Computes the total payment to be issued to the producer by subtracting prior payments issued from earned payment amounts determined in step 7.</p> <p>If the earned payment amounts determined in step 7 are greater than prior payments issued, the system will determine whether the producer or member can be paid because of payment limitation. If the producer has not reached payment limitation, the earned payment amounts can be issued to the producer or member up to the effective payment limitation.</p>
11	Accumulates the earned payment amounts computed in step 10 and sends 1 total payment amount to the accounting system.

**\*--1315 NAP Processing for Crop Years 2001 Through 2005****A NAP Payments for 2001 Through 2005**

NAP processing for crop years 2001 through 2005 has been disabled. Complete the actions in subparagraph B for payment authorizations for crop years 2001 and 2002 or subparagraph C for crop years 2003 through 2005.

If an overpayment has occurred for a 2001 through 2005 NAP payment, enter the--\* overpayment according to 67-FI.

**Note:** If an appeal to NAD results in a determination in the producers favor, County Offices shall ensure that **all** documentation is reviewed and acted upon by COC before requesting payment authorization from the National Office.

**Example:** Producer appeals COC decision about the notice of loss. Producer does not file the application for payment pending the outcome of NAD's decision. NAD's decision is in favor of the producer. Producer is now required to file the application for payment and COC is required to review and act on the application for payment before the case is forwarded to the National Office.

**\*--B Crop Year 2001 and 2002 Authorization Requests**

To receive authorization to issue 2001 or 2002 NAP payments, County Offices shall--\* submit the following documentation to the State Office:

\* \* \*

- explanation of why payment was not issued
- CCC-471
- CCC-576
- CCC-576E, if available
- completed CCC-576A, CCC-576B, or CCC-576C, as applicable
- PPH print from the NAP payment menu for each:
  - producer
  - affected member of joint operations
  - combined producer

**\*--1315 NAP Processing for Crop Years 2001 Through 2005 (Continued)****B Crop Year 2001 and 2002 Authorization Requests (Continued)--\***

- current MABDIG for each:
  - producer
  - affected member of joint operations
- NCT pages, as applicable
- excerpt of COC minutes about the case, if applicable
- CCC-257, if applicable

**Note:** For 2002 cases involving a transfer of coverage, the following additional documentation shall be submitted:

- original CCC-471 for the transferor
- CCC-471 for the transferee
- CCC-577
- PPH for both transferor and transferee.

**Notes:** PPH shall be printed by selecting the applicable menu options from the enabled 2001 or 2002 NAP menus. An accounting history or transaction statement will **not** be accepted in place of PPH from the NAP processing menus.

If the automated forms were not printed before the installation of County Release No. 515 for 2001 processing or County Release No. 543 for 2002 processing, County Offices are no longer able to generate and print those forms, with the exception of PPH. Any required forms that were not printed before the software being disabled shall be **completed manually** and submitted with the other required documentation.

**\*--1315 NAP Processing for Crop Years 2001 Through 2005 (Continued)**

**C Crop Year 2003 Through 2005 Authorization Requests**

To receive authorization to issue 2003 through 2005 NAP payments, County Offices shall submit the following documentation to the State Office:--\*

- explanation of why payment was not issued
- CCC-471
- CCC-576
- CCC-576E, if available
- completed CCC-576A, CCC-576B, or CCC-576C, as applicable
- CCC-452
- PPH print from the NAP payment menu for each:
  - producer
  - affected member of joint operations
  - combined producer
- current MABDIG for each:
  - producer
  - affected member of joint operations
- NCT pages, as applicable

**\*--1315 NAP Processing for Crop Years 2001 Through 2005 (Continued)**

**C Crop Year 2003 Through 2005 Authorization Requests (Continued)--\***

- excerpt of COC minutes about the case, if applicable
- CCC-257, if applicable
- for cases involving a transfer of coverage, the following additional documentation shall be submitted:
  - original CCC-471 for the transferor
  - CCC-471 for the transferee
  - CCC-577
  - PPH for both transferor and transferee.

**Notes:** PPH shall be printed by selecting the applicable menu options from the enabled \* \* \* NAP menu. An accounting history or transaction statement will **not** be accepted in place of PPH from the NAP processing menus.

\*--County Offices are no longer able to generate and print automated NAP forms, with the exception of PPH after installation of the following software:

- County Release No. 557 for 2003 processing
- County Release No. 584 for 2004 processing
- County Release No. 610 for 2005 processing.--\*

**D State Office Responsibility**

State Offices shall:

- review the documentation submitted by County Offices to ensure that:
  - the payment should be issued
  - all applicable documentation has been provided
- forward the documentation to PECD, CPB using either of the following methods:
  - FAX to 202-720-0051, Attention: Sandy Bryant
  - overnight mail to: USDA, FSA, PECD, CPB  
Attn: Sandy Bryant  
\*--Room 4756 South Building--\*  
1400 Independence Avenue, SW  
Washington, DC 20250.

**1316-1320 (Reserved)**



**Section 5 Payment Registers and Reports**

**1400 Overview**

**A Introduction**

There are a variety of reports and registers that have been developed to assist County Offices with processing payments. These include:

- pending payment registers for the “B”, “A”, and “O” payment batches
- nonpayment registers for producers that cannot be paid
- \*--CCC-576E’s--\*
- PPH’s.

**B Accessing Menu MHAC01**

The following reports for NAP payment processing can be generated from Reports Menu MHAC01:

- \*--CCC-576E’s--\*
- PPH’s.

**Note:** The pending and nonpayment registers are automatically generated after a payment batch has completed processing. These reports cannot be regenerated.

Access Menu MHAC01 according to the following table.

<b>Step</b>	<b>Menu</b>	<b>Action</b>
1	FAX250	ENTER “3” or “4”, “Application Processing”, as applicable.
2	FAX09002	If option 4 was selected on Menu FAX250, then select the appropriate county.
3	FAX07001	ENTER “11”, “PFC/Compliance”.
4	M00000	ENTER “1”, “NAP and Disaster”.
5	MH0000	ENTER “2”, “Non-insured Assistance Program”.
6	MHB0YR	Enter appropriate crop year for processing.
7	MHB000	ENTER, “6”, “Payment Processing”.
8	MHACP0	ENTER “5”, “Reports”.

**1401-1405 (Reserved)**





**\*--1413 CCC-576E, NAP Estimated Calculated Payment Report**

**A Introduction**

CCC-576E is a computer-generated document that lists all the calculated payment--\* amounts for a producer based on the data currently loaded in the NAP Application for Payment file.

CCC-576E:

- summarizes the payment data, by payment crop groupings
- calculates a projected payment the producer may be eligible to receive.

**Reminder:** Crops are grouped for payment purposes by unit, payment crop code, payment crop type, and planting period. All matching payment crop codes, payment type codes, and planting periods are considered 1 crop for payment purposes. County Offices shall review the Crop Table File Report to determine which crops are grouped together.

**Note:** See subparagraph E for CCC-576E distribution requirements.

\*--1413 CCC-576E, NAP Estimated Calculated Payment Report (Continued)--\*

**B Approved Notice of Loss Flag**

The approved Notice of Loss flag will indicate whether or not an approved Notice of Loss is on file for the crop and crop type. How this flag is set is very important in the calculation process. Paragraph 322 requires all production in the unit to be reported, however a loss on a crop or crop type without an approved Notice of Loss will not be included in the calculation process. If the Notice of Loss has been filed and is approved, both a gain or loss for the crop calculation will be included in the payment calculation for the crop group. The following examples for wheat show how the “approved loss” flag affects the payment calculation for the crop.

Pay Crop Name	Crop Type	Aprr. Loss Flag	Actual Calc. Payment	Revised Calc. Payment shown on CCC-576E	Calc. for Pay Group
---------------	-----------	-----------------	----------------------	---	---------------------

**Example 1:** For crops **with** an approved Notice of Loss. Wheat is shown with a crop type of winter and spring and both crops and crop types have an approved Notice of Loss. The calculated payment for both crops and crop types will be included in the calculation for the pay group and unit.

WHEAT	HRW	“Y”	\$ 2081	\$ 2081	
WHEAT	HRS	“Y”	\$ 372-	\$ 372-	\$ 1709

**Example 2:** For 1 crop **without** an approved Notice of Loss and 1 crop with an approved Notice of Loss. Wheat is shown with a crop type of winter and does not have an approved Notice of Loss. A crop **loss** is the result of the calculated payment for this crop and crop type. Wheat is also shown with a crop type of spring and has an approved Notice of Loss. This crop also had a loss for the calculated payment. Since the wheat crop and crop type without the approved Notice of Loss had a loss for the calculated payment, the payment must be reduced to zero. Otherwise, the calculated payment for the pay group and unit will be erroneously increased by a crop and crop type that has not met all the provisions to receive a NAP payment.

WHEAT	HRW	blank	\$ 1651	\$ 0	
WHEAT	HRS	“Y”	\$ 2500	\$ 2500	\$ 2500

**Example 3:** For 1 crop **without** an approved Notice of Loss and 1 crop with an approved Notice of Loss. Wheat is shown with a crop type of winter and does not have an approved Notice of Loss. A crop **gain** is the result of the calculated payment for this crop and crop type. Wheat is also shown with a crop type of spring and has an approved Notice of Loss. This crop also had a loss for the calculated payment. Since the wheat crop and crop type without the approved Notice of Loss had a gain for the calculated payment, the calculated payment must be included in the calculation for the pay group and unit to account for all production.

WHEAT	HRW	blank	\$ 840-	\$ 840-	
WHEAT	HRS	“Y”	\$ 2800	\$ 2800	\$ 1960

**\*--1413 CCC-576E, NAP Estimated Calculated Payment Report (Continued)--\*****C Information on CCC-576E**

CCC-576E contains information for all crop losses for the selected producer, including the following:

- detail payment calculation by crop, crop type, and intended use

**\*--Note:** The crop listed on CCC-576E is the pay crop name, not the crop name.--\*

- calculated NAP payment amount unit totals by payment groupings as defined by the crop table
- total projected amount.

CCC-576E is organized and contains data according to the following:

- Part A - yield-based crops, excluding crops with an intended use of RS or SE
- Part B - value loss crops, excluding ginseng, floriculture, and crops with an intended use of RS or SE
- Part C - grazing crops
- Part D - ginseng crop losses
- Part E - floriculture crop losses
- Part F - apple losses
- Part G - apricot losses
- Part H - asparagus losses
- Part I - chia losses
- Part J - chicory losses
- Part K - gailon losses
- Part L - greens losses
- Part M - peach losses
- Part N - pear losses

**\*--1413 CCC-576E, NAP Estimated Calculated Payment Report (Continued)--\***

**C Information on CCC-576E (Continued)**

- Part O - plumcot losses
- Part P - plum losses
- Part Q - prune losses
- Part R - rambutan losses
- Part S - rhubarb losses
- Part T - strawberry losses
- Part U - tangerine losses
- Part V - tomato losses
- Part W - yu cha losses
- Part X - beet losses
- Part Y - onion losses
- Part Z - pepper losses.

\*--1413 CCC-576E, NAP Estimated Calculated Payment Report (Continued)--\*

**C Information on CCC-576E (Continued)**

If a producer does not have crop data for at least 1 crop for a particular part, the message, “An application has not been filed for this type of crop.”, will be printed in the applicable part of CCC-576E.

The following table describes information printed on CCC-576E.

Field	Description
Producer Name, Address, and ID Number	*--Producer name, mailing address, ID number, and ID type. CCC-576E’s are producer specific; therefore, only one CCC-576E will be generated for each producer.--*
<b>Part A - Gross Payment Data for Yield-Based Crops</b>	
<p>Part A contains data for all yield based crops loaded in the NAP Application for Payment file and will print in Part A with the following 3 exceptions:</p> <ul style="list-style-type: none"> <li>• if the crop is ginseng or floriculture, or starting in 2003, is a crop group with an intended *--use of “RS” or “SE”, the yield-based data, if present, prints in CCC-576E, Parts D through Z, as applicable, with all data and headings for Part A--*</li> </ul> <p style="margin-left: 40px;"><b>Note:</b> See this subparagraph for CCC-576E organization for a list of applicable parts on the report.</p> <ul style="list-style-type: none"> <li>• if the yield-based crop also has a grazing record present for the pay group, the *--yield-based data prints in CCC-576E, Part C, with all the data and headings for Part A</li> <li>• if the yield-based crop had an intended use of “FG” or “SD” and part or all of the acres had a final use of “GZ”, the yield-based data, if present, prints in CCC-576E, Part C, with all the data and headings for Part A.--*</li> </ul>	
The following information is printed for each crop record on the Application for Payment file.	
Payment Level	The payment level of 55 percent.
Pay Crop Name	Pay crop name for the crop.
Pay Crop	Pay crop from the crop table for the specified crop, crop type, and intended use for the crop on which the application for payment was filed.
Pay Type	Pay type from the crop table for the specified crop, crop type, and intended use for the crop on which the application for payment was filed.
Planting Period	Applicable planting period for the specified crop.
Unit Number	Unit number for the producer and crop.
Crop Type	Crop type name or abbreviation.
Fnl Use	Intended or final use for the crop, as applicable.



\*--1413 CCC-576E, NAP Estimated Calculated Payment Report (Continued)--\*

C Information on CCC-576E (Continued)

Field	Description
Stage	<p>Indicates whether the crop record is for:</p> <ul style="list-style-type: none"> <li>• harvested acreage (H)</li> <li>• unharvested acreage (UH)</li> <li>• prevented planted acres (PP).</li> </ul>
Practice	<p>Practice for the specified crop type and intended use.</p> <ul style="list-style-type: none"> <li>• “I” for irrigated acreage</li> <li>• “N” for nonirrigated acreage</li> </ul> <p><b>Note:</b> A separate line entry will be present if the producer has both irrigated and nonirrigated acres.</p>
Aprv Loss	<p>Indicates whether an approved Notice of Loss is on file. This field is used to determine if a resulting payment calculation will or will not be included in the payment calculation for the unit.</p> <ul style="list-style-type: none"> <li>• “Y” indicates the approved Notice of Loss is on file.</li> <li>• A blank indicates an approved Notice of Loss is <b>not</b> on file.</li> </ul> <p><b>Note:</b> Refer to subparagraph B for information about the approved Notice of Loss flag and how it affects the calculated payment.</p>

\*--1413 CCC-576E, NAP Estimated Calculated Payment Report (Continued)--\*

C Information on CCC-576E (Continued)

Field	Description	
Share	Producer's share for the specified crop and crop type.	
Acres	For harvested and unharvested planted acreage, as applicable, for the crop, crop type, and final use.	
PP Acres	Prevented planted acreage for the crop, crop type, and intended use.	
Yield	Producer's approved yield, irrigated or nonirrigated as applicable, for the crop, crop type, and intended use.	
Disaster Level	Calculated disaster level for the producer, crop, crop type, and intended use.	
	Calculation for harvested and unharvested crop stages.	
	<b>Step</b>	<b>Calculation</b>
	1	Calculated acreage attributable to the producer is the result of multiplying: <ul style="list-style-type: none"> <li>• acres, times</li> <li>• producer share.</li> </ul>
	2	Calculated disaster level for the producer is the result of multiplying: <ul style="list-style-type: none"> <li>• result of step 1, times</li> <li>• approved yield, times</li> <li>• disaster level percent of 50 percent.</li> </ul>
	2002 and future years calculation for prevented planted crop stage.	
	<b>Step</b>	<b>Calculation</b>
1	Calculated disaster level is the result of: <ul style="list-style-type: none"> <li>• total acres for the pay group, plus</li> <li>• prevented planted acres for the crop and crop type, times</li> <li>• 35 percent.</li> </ul>	

**Note:** Disaster level does not apply to a 2001 crop and crop type with a prevented planted crop stage.



\*--1413 CCC-576E, NAP Estimated Calculated Payment Report (Continued)--\*

C Information on CCC-576E (Continued)

Field	Description	
Net Production	Net production for “harvested” (H) and “unharvested” (UH) for the specified crop, crop type, and intended use is determined according to the following.	
	<b>IF COC has...</b>	<b>THEN the producer’s net production is the result of...</b>
	adjusted the producer’s actual production	<ul style="list-style-type: none"> <li>• COC-adjusted production for the unit, multiplied times</li> <li>• producer share in the unit.</li> </ul>
	assigned production	<ul style="list-style-type: none"> <li>• COC-assigned production for the unit, plus</li> <li>• actual production for the unit, minus</li> <li>• production not to count, multiplied times</li> <li>• producer share in the unit.</li> </ul>
	not adjusted or assigned production	<ul style="list-style-type: none"> <li>• actual production for the unit, minus</li> <li>• production not to count, multiplied times</li> <li>• producer share in the unit.</li> </ul>
Net production for “prevented planted” (PP) for the specified crop, crop type, and intended use is determined according to the following: <ul style="list-style-type: none"> <li>• planted acreage, multiplied times</li> <li>• approved yield for the crop, crop type, and intended use, multiplied times</li> <li>• producer share for the unit, minus</li> <li>• assigned production.</li> </ul>		

\*--1413 CCC-576E, NAP Estimated Calculated Payment Report (Continued)--\*

C Information on CCC-576E (Continued)

Field	Description
Net Production for Payment	<p>Net production for payment for “harvested” (H) and “unharvested” (UH) crop, crop type, and final use is determined according to the following:</p> <ul style="list-style-type: none"> <li>• disaster level, minus</li> <li>• net production.</li> </ul> <p>• For 2001, net production for payment for “prevented planted” (PP) for the specified crop, crop type, and intended use will be the same value as “Net Production”.</p> <p>• For 2002 and future years, net production for payment for PP crop and crop type is determined according to the following:</p> <ul style="list-style-type: none"> <li>• share, times</li> <li>• applicable yield, times</li> <li>• the result of:                             <ul style="list-style-type: none"> <li>• PP acres, minus</li> <li>• disaster level, minus</li> </ul> </li> <li>• assigned production, if applicable.</li> </ul>
Payment Rate	<p>Payment rate from the crop table for the specified crop code, crop type, intended or final use, as applicable, and planting period.</p>
Payment Factor	<p>Applicable payment factor from the crop table for harvested, unharvested, and prevented planted crops.</p> <p><b>Note:</b> The payment factor is 1.0000 if the crop stage is unharvested and the producer’s net production is greater than the disaster level.</p>

\*--1413 CCC-576E, NAP Estimated Calculated Payment Report (Continued)--\*

C Information on CCC-576E (Continued)

Field	Description
Salvage Value	<p>Salvage value attributable to the producer is determined by multiplying the following:</p> <ul style="list-style-type: none"> <li>• total salvage value for the unit for the crop and crop type, times</li> <li>• producer share in the unit.</li> </ul>
Calculated Payment	<p>Calculated payment for “harvested” (H) and “unharvested” (UH) crop, crop type, and intended use is determined according to the following:</p> <ul style="list-style-type: none"> <li>• net production for payment, multiplied times</li> <li>• payment rate, multiplied times</li> <li>• payment factor, multiplied times</li> <li>• payment level, minus</li> <li>• salvage value.</li> </ul> <p><b>Note:</b> If the approved loss field is blank, this indicates the Notice of Loss is not on file or not in an approved status. If the calculated payment resulted in a positive amount, the calculated payment equals zero.</p>
	<p>Calculated payment for the harvest stage of “prevented planted” for the specified crop, crop type, and intended use is determined by multiplying the following:</p> <ul style="list-style-type: none"> <li>• net production for payment, times</li> <li>• payment rate, times</li> <li>• payment factor, times</li> <li>• payment level.</li> </ul> <p><b>Note:</b> If the approved loss field is blank, this indicates the Notice of Loss is not on file or not in an approved status. If the calculated payment resulted in a positive amount, the calculated payment equals zero.</p>

\*--1413 CCC-576E, NAP Estimated Calculated Payment Report (Continued)--\*

C Information on CCC-576E (Continued)

Field	Description
<b>Part B - Gross Payment Data for Value Loss Crops</b>	
Part B contains data for all application records for value loss, except ginseng and floriculture and those crops included in this subparagraph for CCC-576E organization, that have been loaded in the NAP Application for Payment file. The following information is printed for each crop record on the crop table.	
Pay Crop Name	Pay crop name for the crop.
Pay Crop	Pay crop from the crop table for the specified crop, crop type, and intended use for the crop on which the application for payment was filed.
Pay Type	Pay type from the crop table for the specified crop, crop type, and intended use for the crop on which the application for payment was filed.
Planting Period	The applicable planting period for the specified crop.
Unit Number	Unit number for the producer and crop.
Crop Type	Crop type name or abbreviation.
Int Use	Intended or final use for the crop.
Aprv Loss	<p>Indicates whether an approved Notice of Loss is on file.</p> <ul style="list-style-type: none"> <li>• “Y” indicates the approved Notice of Loss is on file</li> <li>• A blank indicates an approved Notice of Loss is <b>not</b> on file.</li> </ul> <p><b>Note:</b> Refer to subparagraph B for information about the approved Notice of Loss flag and how it affects the calculated payment.</p>

\*--1413 CCC-576E, NAP Estimated Calculated Payment Report (Continued)--\*

**C Information on CCC-576E (Continued)**

Field	Description
Share	Producer's share in the crop and crop type.
Field Market Value A	Field Market Value A.
Disaster Level	Calculated disaster level is determined by multiplying the following: <ul style="list-style-type: none"> <li>• Field Market Value A, times</li> <li>• disaster level percent of 50 percent.</li> </ul>
Inventory After Disaster	Dollar Value of Inventory After Disaster for the specified crop and crop type.
Ineligible Cause of Loss	Dollar Value of Ineligible Causes of Loss.
Field Market Value B	Field Market Value B.

\*--1413 CCC-576E, NAP Estimated Calculated Payment Report (Continued)--\*

C Information on CCC-576E (Continued)

Field	Description						
Calculated Dollar Loss	Determining the calculated dollar loss for the producer, crop, and crop type is a 2-step process.						
	<table border="1"> <thead> <tr> <th data-bbox="513 396 602 436">Step</th> <th data-bbox="602 396 1487 436">Calculation</th> </tr> </thead> <tbody> <tr> <td data-bbox="513 436 602 512">1</td> <td data-bbox="602 436 1487 512"> <ul style="list-style-type: none"> <li>• Computed disaster level, minus</li> <li>• Field Market Value B.</li> </ul> </td> </tr> <tr> <td data-bbox="513 512 602 596">2</td> <td data-bbox="602 512 1487 596"> <ul style="list-style-type: none"> <li>• Calculated crop loss determined in step 1, multiplied times</li> <li>• producer's share in the unit.</li> </ul> </td> </tr> </tbody> </table>	Step	Calculation	1	<ul style="list-style-type: none"> <li>• Computed disaster level, minus</li> <li>• Field Market Value B.</li> </ul>	2	<ul style="list-style-type: none"> <li>• Calculated crop loss determined in step 1, multiplied times</li> <li>• producer's share in the unit.</li> </ul>
	Step	Calculation					
1	<ul style="list-style-type: none"> <li>• Computed disaster level, minus</li> <li>• Field Market Value B.</li> </ul>						
2	<ul style="list-style-type: none"> <li>• Calculated crop loss determined in step 1, multiplied times</li> <li>• producer's share in the unit.</li> </ul>						
Approved unharvested payment factor from the crop table for the specified crop and crop type.							
Payment Factor	Approved unharvested payment factor from the crop table for the specified crop and crop type.						
Payment Level	The payment level of 55 percent.						
Salvage Value	<p>Salvage value for the specified crop and crop type is determined by multiplying the following:</p> <ul style="list-style-type: none"> <li>• total salvage for the unit, times</li> <li>• producer share in the unit.</li> </ul>						
Calculated Payment	<p>Calculated payment is determined according to the following:</p> <ul style="list-style-type: none"> <li>• calculated dollar loss, multiplied times</li> <li>• unharvested payment factor, multiplied times</li> <li>• payment level, minus</li> <li>• salvage value.</li> </ul> <p><b>Note:</b> If the "Aprv Loss" field is blank, the Notice of Loss is not on file or not in an approved status. If the calculated payment resulted in a positive amount, the calculated payment equals zero.</p>						

\*--1413 CCC-576E, NAP Estimated Calculated Payment Report (Continued)--\*

C Information on CCC-576E (Continued)

Field	Description
<b>Part C - Gross Payment Data for Grazing Crops</b>	
<p>Part C contains data for all application records for grazing crops that have been loaded in the NAP Application for Payment file. There will be 2 instances where yield-based crop data will print in Part C and the amounts are totaled to determine the loss for the unit after the applicable calculation has been completed for each part. If the:</p>	
<ul style="list-style-type: none"> <li>• grazing crop also has a yield-based crop present for the same pay group, the yield based *--data prints in CCC-576E, Part C, with all the data and headings for Part A</li> <li>• yield-based crop had an intended use of “FG” or “SD” and part or all of the acres had an actual use of “GZ”, the yield based data, if present, prints in CCC-576E, Part C, with--* all the data and headings for Part A.</li> </ul>	
<p>The following information is printed for each crop record on the Application for Payment file.</p>	
Pay Crop Name	Pay crop name for the crop.
Payment Level	The payment level of 55 percent.
Pay Crop	Pay crop from the crop table for the specified crop, crop type, and intended use for the crop on which the application for payment was filed.
Pay Type	Pay type from the crop table for the specified crop, crop type, and intended use for the crop on which the application for payment was filed.
Planting Period	The applicable planting period for the specified crop.
AUD Value	The AUD value of .6787.
Unit Number	Unit number for the producer and crop.
Crop Type	Crop type name or abbreviation.
Practice	<p>Practice for the specified crop type and intended use.</p> <ul style="list-style-type: none"> <li>• “I” for irrigated acreage</li> <li>• “N” for nonirrigated acreage.</li> </ul> <p><b>Note:</b> A separate line entry will be present if the producer has both irrigated and nonirrigated acres.</p>

\*--1413 CCC-576E, NAP Estimated Calculated Payment Report (Continued)--\*

C Information on CCC-576E (Continued)

Field	Description	
Aprv Loss	Indicates whether an approved Notice of Loss is on file. <ul style="list-style-type: none"> <li>• “Y” indicates the approved Notice of Loss is on file.</li> <li>• Blank indicates an approved Notice of Loss is <b>not</b> on file.</li> </ul> <b>Note:</b> Refer to subparagraph B for information about the approved Notice of Loss flag and how it affects the calculated payment.	
Share	Producer’s share for the specified crop and crop type.	
Acres	Planted acreage for the specified crop and crop type.	
Carrying Capacity	The applicable carrying capacity from the crop table for the specified crop code and crop type.  <b>Note:</b> Carrying capacity is determined by the planting period for the crop pay group. See paragraph 107.5 for information about planting periods and carrying capacities.	
Animal Unit	Determining the calculated animal unit for the crop and crop type is a 2-step process.	
	Step	Calculation
	1	Calculated acreage attributable to the producer is the result of multiplying the following: <ul style="list-style-type: none"> <li>• acres, times</li> <li>• producer share in the unit.</li> </ul>
2	Calculated animal unit for the producer is the result of dividing the following: <ul style="list-style-type: none"> <li>• result of step 1, by</li> <li>• carrying capacity.</li> </ul>	
Grazing Days	The applicable grazing days from the crop table for the specified crop code and crop type.	



## \*--1413 CCC-576E, NAP Estimated Calculated Payment Report (Continued)--\*

## C Information on CCC-576E (Continued)

Field	Description
AUD	AUD is determined by multiplying the following: <ul style="list-style-type: none"> <li>• animal unit, times</li> <li>• grazing days.</li> </ul>
AUD Adj Factor	AUD adjusted factor.
AUD Adjst	AUD adjusted is determined by multiplying the following: <ul style="list-style-type: none"> <li>• AUD, times</li> <li>• AUD adj factor.</li> </ul>
Expected AUD	Expected AUD is determined by adding the following: <ul style="list-style-type: none"> <li>• AUD, plus</li> <li>• AUD adjst.</li> </ul> <p><b>Note:</b> The payment calculation stops at expected AUD if the approved Notice of Loss field is blank. All remaining fields will be displayed as zero.</p>
AUD Loss Factor	AUD loss factor.
AUD Loss	AUD loss is determined by multiplying the following: <ul style="list-style-type: none"> <li>• expected AUD, times</li> <li>• AUD loss factor.</li> </ul>
Assign AUD	Assigned AUD.
Prd Shr Asn AUD	Producer share assigned AUD is determined by multiplying the following: <ul style="list-style-type: none"> <li>• assigned AUD, times</li> <li>• producer share in the unit.</li> </ul>
Adj AUD Loss	Adjusted AUD loss is determined by subtracting the following: <ul style="list-style-type: none"> <li>• AUD loss, minus</li> <li>• producer share assigned AUD.</li> </ul>
Total Exp. AUD	Total expected AUD is determined by adding all values for expected AUD.
Total Adj. AUD Loss	Total adjusted AUD Loss is determined by adding all values for adjusted AUD loss.

\*--1413 CCC-576E, NAP Estimated Calculated Payment Report (Continued)--\*

**C Information on CCC-576E (Continued)**

Field	Description
AUD Covered by NAP	AUD covered by NAP is determined by multiplying the following: <ul style="list-style-type: none"> <li>• total expected AUD, times</li> <li>• disaster level percent of 50 percent.</li> </ul>
Net AUD for Payment	Net AUD for payment is determined by subtracting the following: <ul style="list-style-type: none"> <li>• total adjusted AUD loss, minus</li> <li>• AUD covered by NAP.</li> </ul>
AUD Prod Payment	AUD producer payment is determined by multiplying the following: <ul style="list-style-type: none"> <li>• net AUD for payment, times</li> <li>• AUD value, times</li> <li>• payment level.</li> </ul>
<b>Part D - Gross Payment Data for Ginseng Crops</b>	
<p>Part D contains data for all application records for ginseng crops that have been loaded in the NAP Application for Payment file. Ginseng losses are calculated as either yield-based or value loss. However, the amounts are totaled to determine the loss for the unit after the applicable calculation has been completed.</p> <p>See Part A or Part B, as applicable, for a description of the information printed for each crop record on the NAP Application for Payment file.</p>	
<b>Part E - Gross Payment Data for Floriculture Crops</b>	
<p>Part E contains data for all application records for floriculture crops that have been loaded in the NAP Application for Payment file. Floriculture losses are calculated as either yield-based or value loss. However, the amounts are totaled to determine the loss for the unit after the applicable calculation has been completed.</p> <p>See Part A or Part B, as applicable, for a description of the information printed for each crop record on the NAP Application for Payment file.</p>	
<b>Part F - Total Projected NAP Payment</b>	
<p>Part F contains:</p> <ul style="list-style-type: none"> <li>• calculated projected payment for the producers based on the calculated payment for each unit for the producer</li> <li>• description of how each type of payment is calculated</li> <li>• disclaimer information.</li> </ul>	

**\*--1413 CCC-576E, NAP Estimated Calculated Payment Report (Continued)**

**D What Is Not on CCC-576E**

CCC-576E does not interface to any of the following:

- subsidiary file to determine producer eligibility
- entity file to determine member information
- payment limitation file.

**E Distributing CCC-576E's**

CCC-576E has been developed to give producers a projection of the potential payment they may be eligible to receive.

County Offices shall ensure that all producers applying for NAP benefits receive CCC-576E.--\*

**\*--1414 Printing CCC-576E's**

**A Printing CCC-576E From Menu MHAC01**

CCC-576E can be printed for a specific producer or for all producers. Use the following table to print CCC-576E's from NAP Reports Menu MHAC01.

Step	Menu or Screen	Action	Result
1		Access Menu MHACP0 according to paragraph 1313.	Menu MHAC01 will be displayed.
2	MHAC01	ENTER "2", "NAP Estimated Calculated Payment Report", and PRESS "Enter".--*	Screen MHACPRT2 will be displayed.
3	MHACPRT2	Enter the appropriate printer ID and PRESS "Enter".  <b>Notes:</b> CCC-576E prints in landscape format. It is recommended that all print jobs for CCC-576E be sent to a laser printer.  If a laser printer is not available, ensure that the selected printer contains paper that is 11 inches wide.	Screen MHACPA01 will be displayed.

\*--1414 Printing CCC-576E's (Continued)

A Printing CCC-576E's From Menu MHAC01 (Continued)

Step	Menu or Screen	Action	Result									
4	MHACPA01	<p>Screen MHACPA01 provides several options to print CCC-576E. Select either a specific producer or all producers according to the following.</p> <p><b>Note:</b> Information on CCC-576E may not be correct if the report is being updated on another workstation.</p>										
		<table border="1"> <thead> <tr> <th data-bbox="570 653 776 695">Selection</th> <th data-bbox="776 653 1208 695">Action</th> <th data-bbox="1208 653 1487 695">Result</th> </tr> </thead> <tbody> <tr> <td data-bbox="570 695 776 1094">Process CCC-576E's for all producers.</td> <td data-bbox="776 695 1208 1094"> <p>ENTER "All" in the "Enter Producer ID Number" field and PRESS "Enter".</p> <p><b>Note:</b> Do not use this option if worksheets are being updated on any other workstation. Wait until all users have exited the NAP application for payment process.</p> </td> <td data-bbox="1208 695 1487 1094"> <p>CCC-576E's will be generated for all producers that have an application for payment on file.</p> <p>Screen MHACPA01 will be redisplayed.</p> </td> </tr> <tr> <td data-bbox="570 1094 776 1617">Process CCC-576E for a selected producer.</td> <td data-bbox="776 1094 1208 1617"> <p>Enter 1 of the following and PRESS "Enter":</p> <ul style="list-style-type: none"> <li>• producer ID number and ID type in the "Enter Producer ID Number and Type" fields</li> <li>• last 4 digits of producer's ID number in the "Last Four Digits of ID" field</li> <li>• producer's last name in the "Last Name" field.</li> </ul> </td> <td data-bbox="1208 1094 1487 1617"> <p>CCC-576E will be generated if the selected producer has an application for payment on file.</p> <p>Screen MHACPA01 will be redisplayed.</p> </td> </tr> </tbody> </table>	Selection	Action	Result	Process CCC-576E's for all producers.	<p>ENTER "All" in the "Enter Producer ID Number" field and PRESS "Enter".</p> <p><b>Note:</b> Do not use this option if worksheets are being updated on any other workstation. Wait until all users have exited the NAP application for payment process.</p>	<p>CCC-576E's will be generated for all producers that have an application for payment on file.</p> <p>Screen MHACPA01 will be redisplayed.</p>	Process CCC-576E for a selected producer.	<p>Enter 1 of the following and PRESS "Enter":</p> <ul style="list-style-type: none"> <li>• producer ID number and ID type in the "Enter Producer ID Number and Type" fields</li> <li>• last 4 digits of producer's ID number in the "Last Four Digits of ID" field</li> <li>• producer's last name in the "Last Name" field.</li> </ul>	<p>CCC-576E will be generated if the selected producer has an application for payment on file.</p> <p>Screen MHACPA01 will be redisplayed.</p>	
Selection	Action	Result										
Process CCC-576E's for all producers.	<p>ENTER "All" in the "Enter Producer ID Number" field and PRESS "Enter".</p> <p><b>Note:</b> Do not use this option if worksheets are being updated on any other workstation. Wait until all users have exited the NAP application for payment process.</p>	<p>CCC-576E's will be generated for all producers that have an application for payment on file.</p> <p>Screen MHACPA01 will be redisplayed.</p>										
Process CCC-576E for a selected producer.	<p>Enter 1 of the following and PRESS "Enter":</p> <ul style="list-style-type: none"> <li>• producer ID number and ID type in the "Enter Producer ID Number and Type" fields</li> <li>• last 4 digits of producer's ID number in the "Last Four Digits of ID" field</li> <li>• producer's last name in the "Last Name" field.</li> </ul>	<p>CCC-576E will be generated if the selected producer has an application for payment on file.</p> <p>Screen MHACPA01 will be redisplayed.</p>										

--\*

1415-1424 (Reserved)



Reports, Forms, Abbreviations, and Redelegations of Authority

Reports

None

Forms

This table lists all forms referenced in this handbook.

Number	Title	Display Reference	Reference
AD-1026	Highly Erodible Land Conservation (HELIC) and Wetland Conservation (WC) Certification (Assembled as a component with AD-1026 Appendix)		8, 882, 1110, 1276, 1367, 1389, 1432
CCC-184	CCC Check		1279, 1323, 1350, 1351, 1366, 1425
CCC-257	Schedule of Deposit		24, 885, 888, 890, 1315
CCC-441 Income	Noninsured Crop Disaster Assistance Program Certification of Income Eligibility	33	
CCC-448	NAP Payment Calculation Worksheet (Loss of Expected Production)		1315
CCC-448A	NAP Payment Calculation Worksheet (Prevented Planting)		1315
CCC-448B	Ornamental Nursery Loss Adjustment and Payment Calculation Worksheet		1315
CCC-448C	Christmas Tree Loss Adjustment and Payment Calculation Worksheet		1315
CCC-448D	Aquaculture Crop Loss Adjustment and Payment Calculation Worksheet		1315
CCC-448E	NAP Loss Adjustment and Payment Calculation Worksheet (Category 1 Forage)		195, 1315

## Reports, Forms, Abbreviations, and Delegations of Authority (Continued)

## Forms (Continued)

Number	Title	Display Reference	Reference
CCC-451	NAP Production Report (Forage)		1315
CCC-451A	NAP Animal Unit Day (AUD) Worksheet (Category 1 Forage)		1315
CCC-451B	NAP Production Worksheet (Category 2 Forage)		1315
CCC-451C	Supplemental Feed Worksheet		1315
CCC-451D	Category 1 Forage Information Noninsured Crop Disaster Assistance Program		1315
CCC-452	NAP Production and Yield Report	838	Text
CCC-452 Manual	NAP Actual Production History and Approved Yield Record	Ex. 25	254
CCC-456	NAP Crop Data Information	Ex. 17	106-108, 110, 170
CCC-471	Non-Insured Crop Disaster Assistance Program (NAP) Application for Coverage	23	Text, Ex. 2, 7, 7.1, 7.5-7.7, 8
CCC-502	Farm Operating Plan for Payment Eligibility Review		8
CCC-576	Notice of Loss and Application for Payment Noninsured Crop Disaster Assistance Program		Text, Ex. 2, 41, 42
CCC-576-1	Appraisal/Production Report Noninsured Crop Disaster Assistance Program	Ex. 42	Text Ex. 41
CCC-576A	2001 Noninsured Crop Disaster Assistance Program Payment Calculation Worksheet	1280	Text
	2002 and Future Years Noninsured Crop Disaster Assistance Program Manual Payment Calculation Worksheet (Yield Based Crops)	1283	
CCC-576A-1	Noninsured Crop Disaster Assistance Program Payment Calculation Worksheet for Multiple Crop Types With Prevented Planted Acres	1283.5	1283



## Reports, Forms, Abbreviations, and Delegations of Authority (Continued)

## Forms (Continued)

Number	Title	Display Reference	Reference
CCC-576B	2001 Noninsured Crop Disaster Assistance Program Payment Calculation Worksheet (Value Loss Crops)	1281	Text
	2002 and Future Years Noninsured Crop Disaster Assistance Program Manual Payment Calculation Worksheet (Value Loss Crops)	1284	
CCC-576C	2001 Noninsured Crop Disaster Assistance Program Payment Calculation Worksheet (Grazing Crops)	1282	156, 1276, 1279, 1283, 1314, 1315, 1413
CCC-576E	NAP Estimated Calculated Payment Report		881, 1016, 1315, 1400, 1413, 1414
CCC-577	Transfer of NAP Coverage	Ex. 9	24.5
CCC-770 NAP Eligibility	Eligibility Checklist		1311
CCC-770 NAP	Noninsured Crop Disaster Assistance Program Payment Checklist	11	1311
FSA-325	Application for Payments of Amounts Due Persons Who Have Died, Disappeared, or Have Been Declared Incompetent		1276
FSA-570	Waiver of Eligibility for Emergency Assistance		32
FSA-578	Report of Acreage		Text, Ex. 42
FSA-1001	Notice of Peanut Poundage Quota		Ex. 18

## Reports, Forms, Abbreviations, and Redelegations of Authority (Continued)

## Abbreviations Not Listed in 1-CM

The following abbreviations are not listed in 1-CM.

<b>Approved Abbreviation</b>	<b>Term</b>	<b>Reference</b>
APH	actual production history	Text, Ex. 2, 25, 45
AUD	animal-unit-day	Text, Ex. 2
CAT	catastrophic risk protection	427, Ex. 2
CIH	Crop Insurance Handbook	1, 426
CPB	Common Provisions Branch, PECD	1315
CRS	common receivable system	Part 10, Section 4; 1406
CVS	Compliance Validation System	751.5
EFT	electronic fund transfer	1323, 1351, 1353, 1406, 1425
GRP	Group Risk Protection	172, 505
MPCI	Multiple Peril Crop Insurance	426
NAPB	Noninsured Assistance Program Branch, PECD	10, 170, 189, 195, 884, Ex. 17
NCT	national crop table	Text
PP	prevented planted	1110
PPH	producer payment history	Text
PRD	production reporting date	Text, Ex. 2
SUD	Sudan	1283.5
SWI	Switch	1283.5
T-yield	transitional yield	107, 152, Part 5, 322, 323, 327, Ex. 2, 17