

Miller's
100% PURE GROUND BEEF

U. S.
INSPECTED
AND PASSED BY
DEPARTMENT OF
AGRICULTURE
EST. 1241

KEEP
REFRIGERATED

15% FAT

**Nutrition
Facts**

Serv. Size 4 ozs. (112g)

Servings Per Container varied

Calories 240

Fat Cal. 150

* Percent Daily Values (DV) are
based on a 2,000 calorie diet.

Amount/serving	%DV*	Amount/serving	%DV*
Total Fat 17g	26%	Sodium 65mg	3%
Sat. Fat 7g	34%	Total Carb. 0g	0%
Cholest. 70mg	24%	Protein 22g	
Iron	10%		

Not a significant source of dietary fiber, sugars, vitamin A, vitamin C, and calcium.

PACKAGED FOR

Miller Meat Co.

LOS ANGELES, CA 90058

702040

TEAR HERE

RESEALABLE PACK



MORAN'S
ALL NATURAL

HAMBURGER PATTIES

100% GROUND BEEF

80% LEAN 20% FAT

KEEP
FROZEN

12
1/4 POUND
PATTIES

U.S.
INSPECTED
AND PASSED BY
DEPARTMENT OF
AGRICULTURE
EST. 1241



SERVING SUGG

*Minimally processed with no artificial ingredients.

NET WT. 48 OZ. (3 LB)

TEAR HERE

RESEALABLE PACKAGING



MORAN'S
ALL NATURAL

SIRLOIN PATTIES

100% GROUND BEEF

90% LEAN  10% FAT

KEEP
FROZEN

10
1/4 POUND
PATTIES

U.S.
INSPECTED
AND PASSED BY
DEPARTMENT OF
AGRICULTURE
EST. 1241



SERVING SUGGESTION

Minimally processed with no artificial ingredients.

NET WT. 40 OZ. (2.5LB)

PRODUCED ON APR 13-07-PM B#31 73/27 L#2 EST 1241



PRODUCED ON APR 13-07-PM B#31 75/25 FN L#2 EST 1241



PRODUCED ON APR 13-07-PM B#30 80/20 CHUX L#2 EST 1241



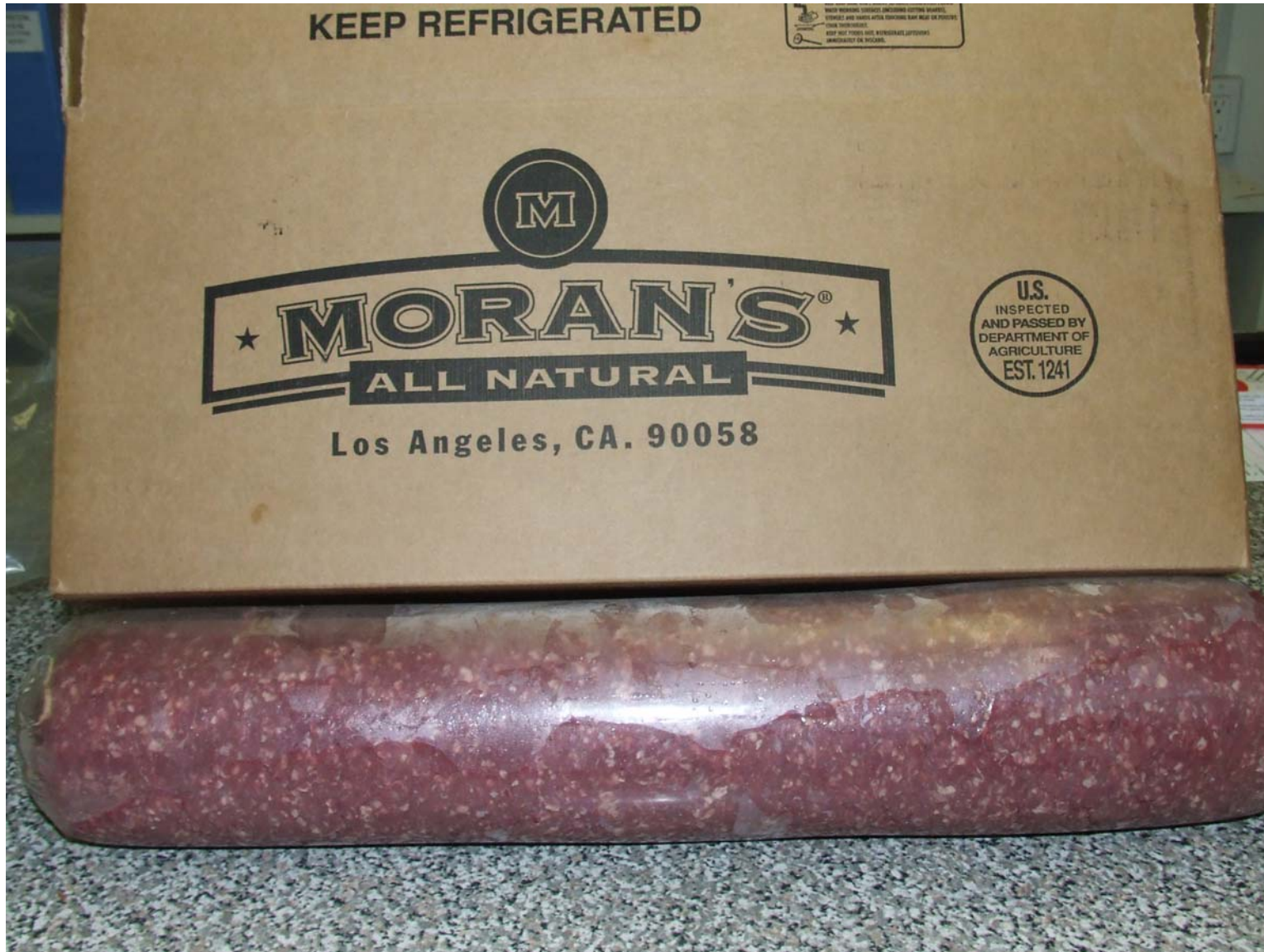
PRODUCED ON APR 13-07-PM B#(32, 33, 34) 81/19 FN L#2 EST 1241



PRODUCED ON APR 13-07-PM B#21 85/15 FN L#(2, 3) EST 1241



PRODUCED ON APR 13-07-PM B#(22, 23) 85/15 L#2 EST 1241



PRODUCED ON APR 13-07-PM B#(28, 29, 35) 85/15 RND L#2 EST 1241



PRODUCED ON APR 13-07-PM B#(27, 33) 85/15 SIR L#2 EST 1241



PRODUCED ON APR 13-07-PM B#(10, 13, 16, 17, 19, 28) 90/10 FN L#3 EST 1241



PRODUCED ON APR 13-07-PM B#(25, 26, 27) 90/10 SIR L#2 EST 1241



PRODUCED ON APR 13-07-PM B#24 93/7 L#2 EST 1241



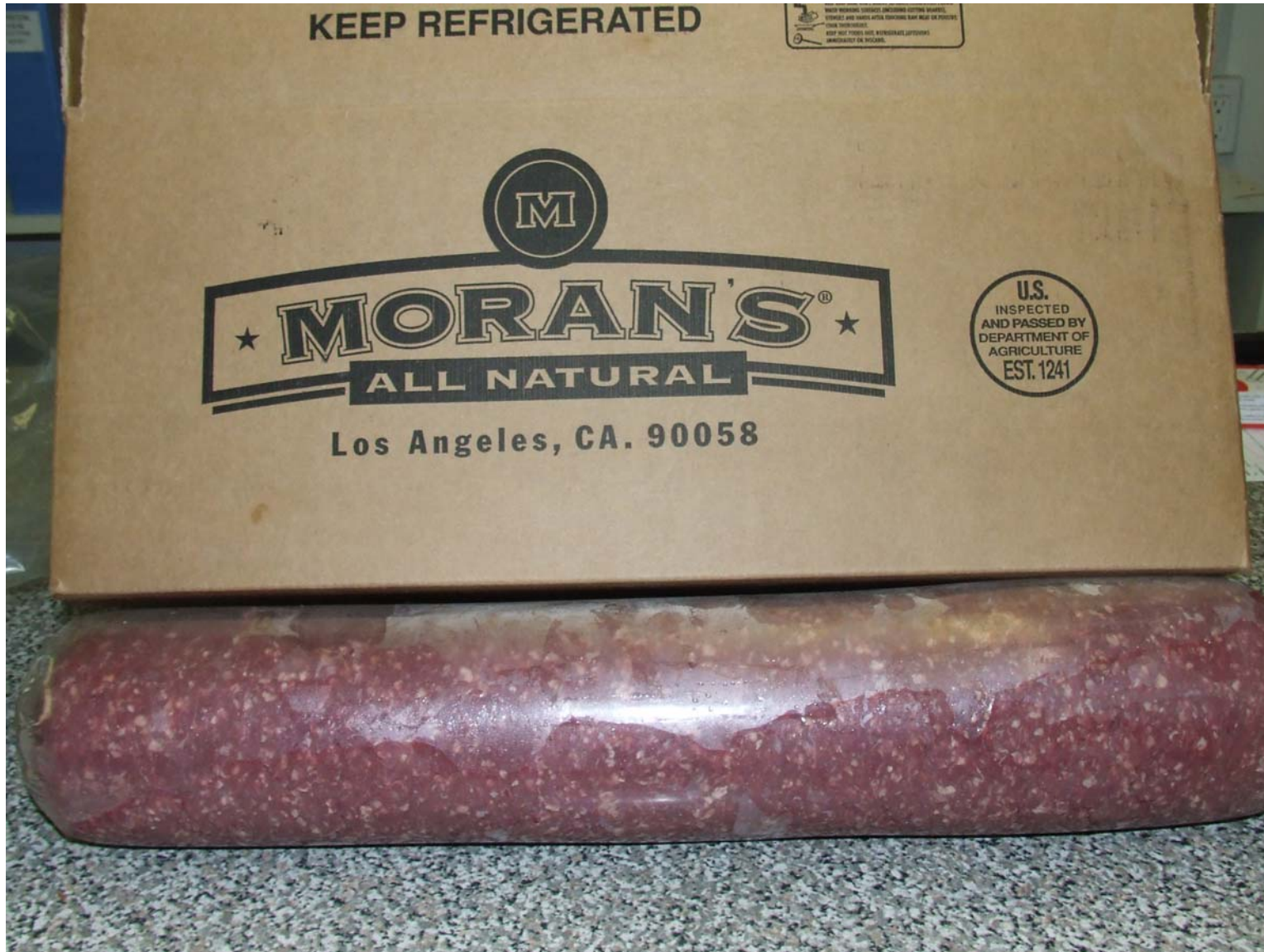
PRODUCED ON APR 13-07-PM B#(22, 23, 24) 93/7 SIR L#3 EST 1241



PRODUCED ON APR 13-07-AM B#2 95/5 FN L#3 EST 1241



PRODUCED ON APR 13-07-PM B#10 96/4 FN L#3 EST 1241



103 Freeze By APR/29/07 AM L#2 B#4 KP#(1, 2, or 3)

103 Freeze By APR/29/07 AM L#3 B#4



103 Freeze By APR/28/07 PM L#3 B#(11, 12)



103 Sell By APR/29/07 B#(26, 29) L#3 PM EST 1241





103 Freeze By APR/28/07 AM L#2 B#(20, 35) KP#(1, 2, or 3)



103 Freeze By APR/30/07 PM L#2 B#(51, 52, 53, 54) KP#(1, 2, or 3)

103 Freeze By APR/30/07 PM L#3 B#(1, 2) KP#(1, 2, or 3)

