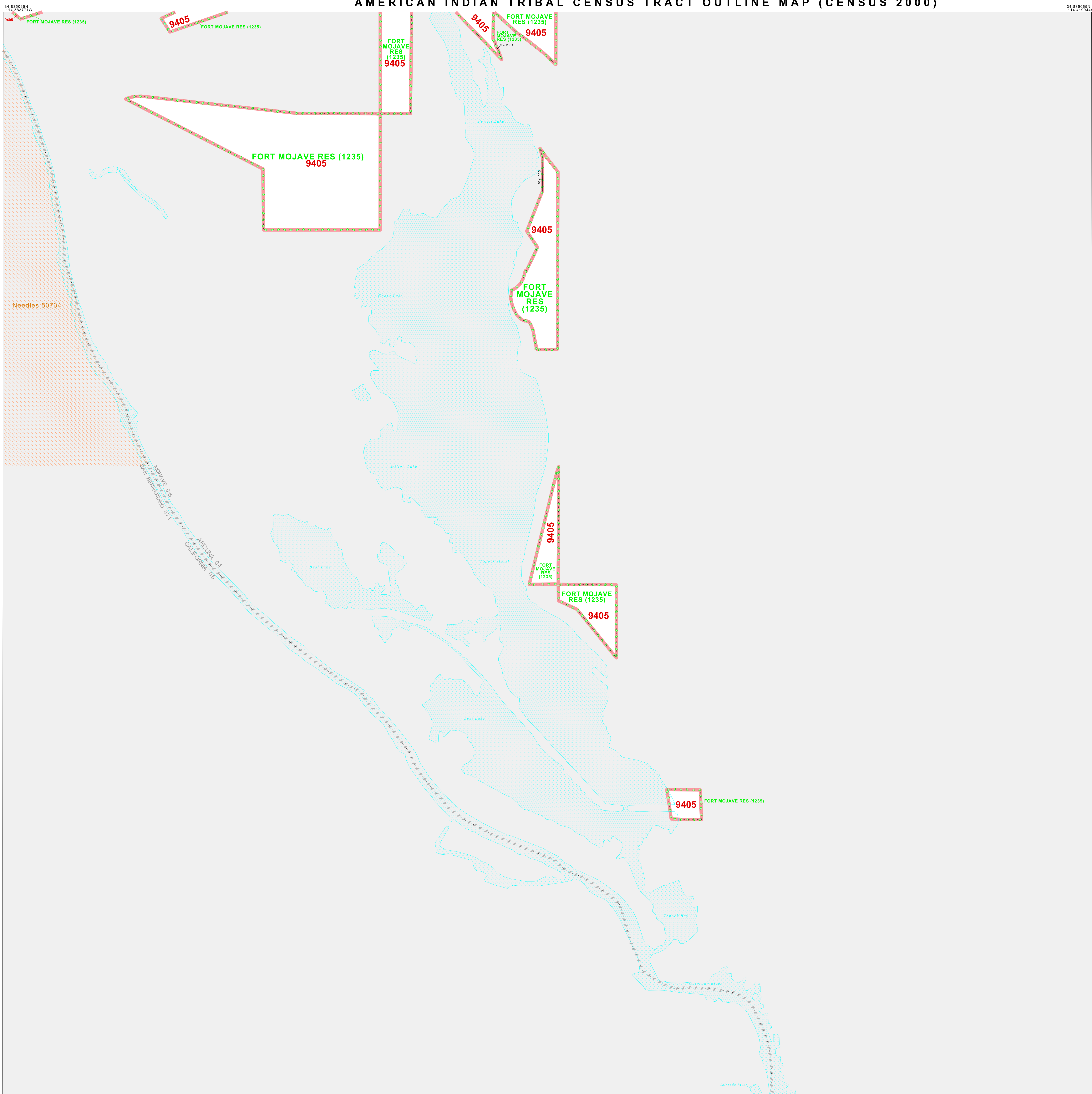


AMERICAN INDIAN TRIBAL CENSUS TRACT OUTLINE MAP (CENSUS 2000)

34 835065N  
114 419944W



LEGEND

SYMBOL	NAME STYLE
*****	INTERNATIONAL
*****	AIR (FEDERAL)
*****	Trust Land
*****	OTSA / TDSA
*****	AMERICAN INDIAN TRIBAL SUBDIVISION
*****	AIR (State)
*****	SDA/ISA
-----	STATE (or statistically equivalent entity)
-----	COUNTY (or statistically equivalent entity)
-----	Place within Subject Entity
-----	Incorporated Place / GDP
-----	Place outside of Subject Entity
-----	Incorporated Place / GDP
-----	<b>Tribal Census Tract<sup>1</sup></b>

ABBREVIATION REFERENCE: AIR = American Indian Reservation;  
Trust Land = Off-Reservation Trust Land; OTSA = Oklahoma Tribal  
Statistical Area; TDSA = Tribal Designated Statistical Area;  
SDA/ISA = State Designated American Indian Statistical Area;  
GDP = Census Designated Place

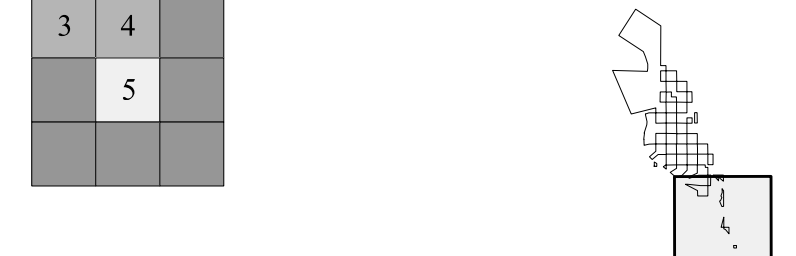
FEATURES

All Roads	Stream/Shoreline
Railroad	Inter-Tribal Stream
Pipe/Pump Line	River/Lake
Physical Feature	Glacier
Nonvisible Boundary	

Inset Out Area

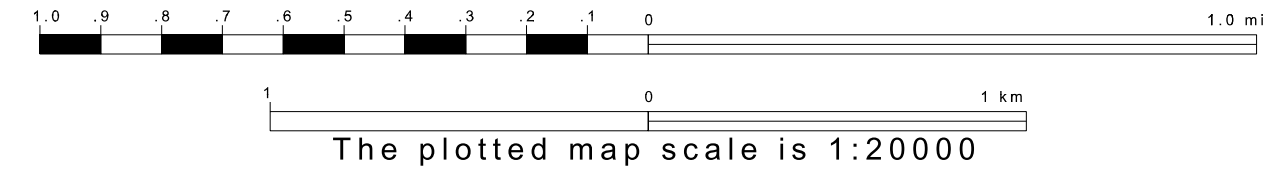
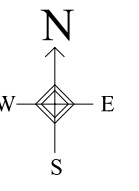
<sup>1</sup> This map shows tribal census tract boundaries and numbers. A tribal census tract is a type of census tract defined within a federally recognized American Indian reservation or off-reservation trust land for the purpose of providing data based on an American Indian hierarchy rather than by state and county.

Key to Adjacent Sheets Sheet Location within Entity

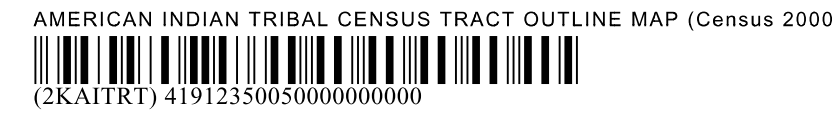


SHEET 5 OF 5 PARENT SHEETS  
TOTAL SHEETS: 6 (Index 1; Parent 5; Inset 0)

34 701420N  
114 583771W



ENTITY TYPE: American Indian Reservation  
NAME: Fort Mojave Reservation and Off-Reservation Trust Land (1235)  
ST: Arizona, California, Nevada



All legal boundaries and names are as of January 1, 2000. The boundaries shown on this map are for Census Bureau statistical data collection and tabulation purposes only; their depiction and designation for statistical purposes does not constitute a determination of jurisdictional authority or rights of ownership or entitlement. Source: U.S. Census Bureau's TIGER database (Census 2000) Projection: State-based Albers Equal Area U.S. DEPARTMENT OF COMMERCE Economics and Statistics Administration U.S. Census Bureau