



# EL-CID Quick Reference

## Version 4

New   
 Open   
 Save   
 Print   
 Query   
 Compliance   
 Clone   
 Delete  
 Import   
 Export   
 Preferences   
 Station Palette   
 Link Mode   
 ITU   
 Help

Tool Bar

**Station Palette**

1. Click to select a Station icon

Icons you can link to/from are colored

2. Drag icon to the Diagram View

3. Check to show Radio Services and Station Classes

Radio Services and Station Classes available from the selected icon to the icon under mouse cursor

**Tree View**

1. Click a node to display data items

This item hides/unhides other items depending upon its value

Classification of data item

Data Item	Class	Value	Units
Fixed Frequency?	U	No	
Lowest Tuned Frequency	U	136.00	MHz
Highest Tuned Frequency	U	160.00	MHz
Tuning Increment	U	12.500	kHz
# of Frequencies Required for Operation	U		
Minimum Required Frequency Separation	U		MHz

4. Click another node to save data

2. Click anywhere in row to change a data item

3. Click to restore original values

5. Bold items are required

6. Data item help displayed here

For more detailed information: Consult the EL-CID Help File



# EL-CID Quick Reference Version 4

## Preferences

**Preferred Settings**

Default Units | **General**

- Large icons in toolbar
- Compact database on startup
- Open data item selector when creating new query
- Display wizard on startup
- Display release information on startup
- Include XML-Schema (export.xsd) in export files
- Restore map defaults on next display of map
- Warn about possible viruses when viewing attachments

Path to Satellite Registration (ITU):  ...

OK Cancel

**Preferred Settings**

Default Units | **General**

Data Item	Units	Significant Digits	Sample
Frequency	MHz	5	0.000012346 MHz
Bandwidth/Selectivity	kHz	5	0.012346 kHz
Frequency Tolerance	kHz	5	0.012346 kHz
Tuning Increment	kHz	5	0.012346 kHz
Data Rate	bps	3	12.3 bps
Pulse Rate	pps	3	12.3 pps
Chip Rate	/sec	3	12.3 /sec
Code Repetition Rate	/sec	3	12.3 /sec
Hop Rate	/sec	3	12.3 /sec
Power	W	3	12.3 W
Power Density	W/Hz	3	12.3 W/Hz

Used For:

Frequency	Frequency
Antenna - Linear	Antenna Upper Frequency Limit
Accepted Mode	Low Frequency of Band or Discrete Frequency

OK Cancel

## Data Finder

1. Enter a search string here.

2. Click to locate data item containing search string.

3. Click to choose data item.

**Data Item Finder**

Search:  Find First Find Next Show Descriptions

Tree Node	Data Item (Field)	1494 Page	1494 Block
[Certification]			
[General Information]			
[General Information]	Agency	Certification of Spectrum	Recipient Agency
[General Information]	System Name	NTIA General	1. Application Title, 2. System
[General Information]	Stage	NTIA General	3. Stage of Allocation
[General Information]	Approval Status		
[General Information]	Date/Time Last Modified		
[General Information]	Coordinate ID		

The code, as specified in Annex G of the NTIA Manual, which identifies the agency responsible for managing the frequency authorization or the certification application.

Expand All OK

4. Click to expand or collapse entire tree.

Full description of highlighted data item appears here.

Screen is resizable.



# EL-CID Quick Reference Version 4

Data Entry

## Edit Box

Model Name and Number U AN/PRC-127A Rx

## Pick List

2. Click to select a value from list

1. Click to drop down list of values

Power Type U Mean

Power U Mean  
Carrier  
Peak Envelope

## Database Pick List

Click to list possible values

Manufacturer U RELM Communications ...

## Numeric with units

1. Click to select units first

2. Then enter value here

Lowest Tuned Frequency U 5.000 MHz

## Emission Designator

1. Enter a valid Emission Designator here, or ...

2. ...click to display Emission Designator screen

Emission Designator U 12K0F3E

## Memo Box

1. Type the text here, or ...

2. ... click this button to display a larger text entry screen.

System Description U The AN/PRC-127A ...

## Memo Box Expanded

System Description

The AN/PRC-127A is a mall, lightweight radio capable of providing two-way ground communications.

OK Cancel

## Attachment

1. Click to specify a file name

2. Click to launch application to view file

This button displays the icon of the application associated with the file

Attachment U Minutes113001.doc



# EL-CID Quick Reference Version 4

Curve Editor

Set the classification of the entire curve.

If present, click to calculate the curve using a model.

If present, select Measured or Calculated.

Click to delete selected point or add a new point.

Click on diagram with mouse or type in a value.

The X axis is this many kHz wide.

Increase/decrease X axis scale or automatically size to fit.

Click a row of grid or click on a point to select a point.

Scroll X axis left or right.

**RF Fundamental Curve**

Measured or Calculated?:

Classification:

Freq offset (Fo)	Level (dB)
12.000	-3.00
15.000	-20.0
18.000	-60.0

Delete Point

Freq offset (Fo):  kHz

Level (dB):  dB

dB

Frequency =  $F_c + F_o$  (Carrier frequency)

Scale:  kHz  Autoscale  Log scale

Reset

UNCLASSIFIED [Certification] NTIA - Manpack - 4 - Unapproved - 7/28/2004 4:03:05 PM - J/F 12



# EL-CID Quick Reference

## Version 4

Link Information

Radio Service & Station Class

1. Click to choose Radio Service and Station Class.

2. Click to choose transmitter.

3. Click to choose transmitting antenna.

4. Enter transmitter-to-antenna Coupling Loss.

Hover mouse cursor over icon to see Station type

?? indicates Station Class must first be chosen.

Link Information

Reverse Link

From Station: ManPack To Station: ManPack2

Radio Service / Station Class: Land Mobile / MLP - Portable Land Mobile

Transmitter: Manpack TX Transmitter antenna: Manpack Ant

Coupling Loss: U 5.00 dB

Receiver: Receiver antenna:

Power (W)	Frequency (MHz)	Emission	In-band?
3.00 Mean	136.00 - 138.00	11K0F3E	No
3.00 Mean	149.90 - 150.05	11K0F3E	No
3.00 Mean	150.80 - 160.00	11K0F3E	No

Available Modes:  In-band only

Power (W)	Frequency (MHz)	Emission	In-band?
3.00 Mean	138.00 - 144.00	11K0F3E	PRI
3.00 Mean	148.00 - 149.90	11K0F3E	PRI
3.00 Mean	150.05 - 150.80	11K0F3E	PRI
3.00 Mean	144.00 - 148.00	11K0F3E	No

Justification for out-of-band Modes

Frequency Allocation Table... View Link... Apply Close

1. Check Radio Service/Station Classes desired.

2. Click to save.

Hover mouse cursor over icon to see Station type

Select Radio Service and Station Class

From Station: Back Pack Radio To Station: Back Pack Radio 2

Station Class	Radio Service
ML - Land Mobile	<input type="checkbox"/>
MLD - Telecommand Land Mobile	<input type="checkbox"/>
MLP - Portable Land Mobile	<input checked="" type="checkbox"/>

Portable Land Mobile Station: A portable station operating in the land mobile service.

OK Cancel

Hover mouse over choices to display information here.

5. Click to choose receiver (generic stations have no receivers).

6. Click to choose receiving antenna.

7. Click to highlight a Mode, then click > to select.

8. For out-of-band Modes, enter a Justification or pick from Policies.

9. Click to save link info.

Check to hide out-of-band Modes



# EL-CID Quick Reference

## Version 4

### View Link

Click and press Ctrl-C to copy grid to clipboard

Click to view opposite link (if enabled)

Click to change sort order

Drag divider to resize columns

Reverse Link

From Station: ManPac

To Station: ManPac2

Transmitter	Power	Frequency	Em. Des.	EIRP	TX Antenna	RX Antenna
ANPRC-127A TX	Mean 3.00 W	136.000 MHz - 130.000 MHz	11K0F3E		N8N 5985-C1-274-5051	N8N 5985-01-274-5051

Radio Service / Station Class:  
Land Mobile / ML - Land Mobile

OK

Hover mouse cursor over icon to see Station type

Station name

### View Link Summary

Check to reduce number of columns displayed.

Click column header to change sort order.

Hide receivers

Hide modes

Hide locations

Hide stations and equipment

TX Station	Transmitter	Power (W)	Frequency (MHz)	Em. Des.	Stn Class	EIRP (W)	TX Antenna	RX Antenna	Re
XMT TX	XMT Transmitter	3.00 Mean	74.600 - 74.800 75.200 - 75.400	25K0F1D	FX		MRT Antenna	MRT Antenna	MR T

OK

Drag divider between columns to resize columns

Drag column headers to re-order columns

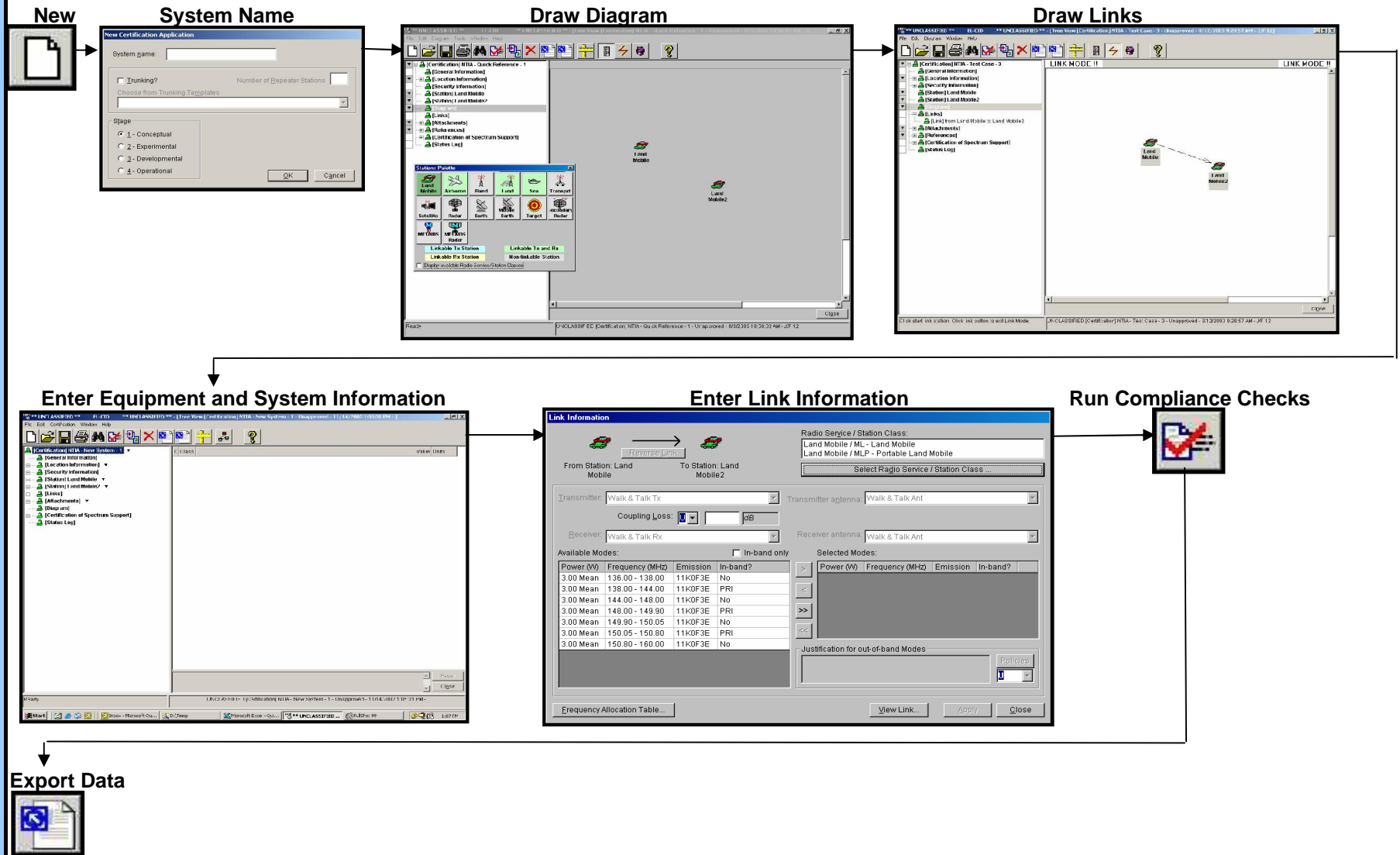
The window is resizable

For more detailed information: Consult the EL-CID Help File



# EL-CID Quick Reference Version 4

Creating a New Certification



For more detailed information: Consult the EL-CID Help File



# EL-CID Quick Reference

## Version 4

### Keyboard Shortcuts

#### Keyboard Shortcuts

The following tips will assist users who prefer to use the keyboard rather than the mouse.

##### Tab Key

In general, the Tab key should be used to move from one item to the next; not the Enter key.

##### F10

Press the F10 key for quick access to the main menu.

##### Grids

Throughout EL-CID a number of screens display data in a grid. To navigate up/down or left/right in these grids, use the arrow keys. One exception is the Tree View. On this screen, hold down the Shift key while using the arrow keys to navigate in the grid. Press the Tab key to move off the grid elsewhere on the screen.

##### Pick Lists

When the cursor is on a pick list, press the down or up arrow keys to scroll through the pick list. Hold down the Alt key and press the down arrow key to drop the pick list down. In many cases, you can also select items in the pick list by typing the starting characters.

##### Tree View

To navigate within the data item grid, hold down the Shift key while pressing the arrow keys.

When the cursor is on a node of the tree, press the right arrow key to expand the node. Use the left arrow key to collapse the node. Use the up and down arrow keys to scroll through the tree.

##### Frequencies

When entering frequencies, you can use the standard MCEB format as a shortcut to entering the value and units. For example, entering K50, will enter a value of 50 and select kilohertz, regardless of the current units selected. Use a T for terahertz, G for gigahertz, M for megahertz, K for kilohertz, or H for hertz. The units may precede or follow the number. For example, K50 and 50K are both acceptable. You can also enter frequencies using scientific notation. For example 12000 would be entered as 12E3.

##### Diagram View

The Diagram View cannot be operated without a mouse.

### Copying Data

#### Copying Grid Data to the Windows Clipboard

1. If focus is not currently on the grid, click somewhere in the grid to move focus to it.
2. Hold down the Ctrl key and press the C key. The Copy Grid To Clipboard Options screen appears.
3. If you want to copy only the highlighted cells of the grid to the clipboard, select the Highlighted cells only radio button . To copy the entire grid to the clipboard, select the Entire grid radio button. In the latter case, if you want to include the column headings of the grid, check the Include column headings check box.
4. Click OK or click Cancel to abandon copying.
5. To paste the clipboard contents into another application, switch to the other application, then hold down the Ctrl key and press the V key.

### Map

#### About the Map

Consult the help file for detailed information

For more detailed information: Consult the EL-CID Help File