

AMERICAN INDIAN TRIBAL CENSUS TRACT OUTLINE MAP (CENSUS 2000)

35 234578N
107 634747W

35 234578N
107 274563W

LEGEND

SYMBOL	NAME STYLE
*****	INTERNATIONAL
*****	AIR (FEDERAL)
*****	Trust Land
*****	OTSA / TDSA
*****	AMERICAN INDIAN TRIBAL SUBDIVISION
*****	AIR (State)
*****	SDA/SA
//////	STATE (or statistically equivalent entity)
	COUNTY (or statistically equivalent entity)
	Place within Subject Entity
	Incorporated Place / GDP
	Place outside of Subject Entity
	Incorporated Place / GDP
	Tribal Census Tract¹

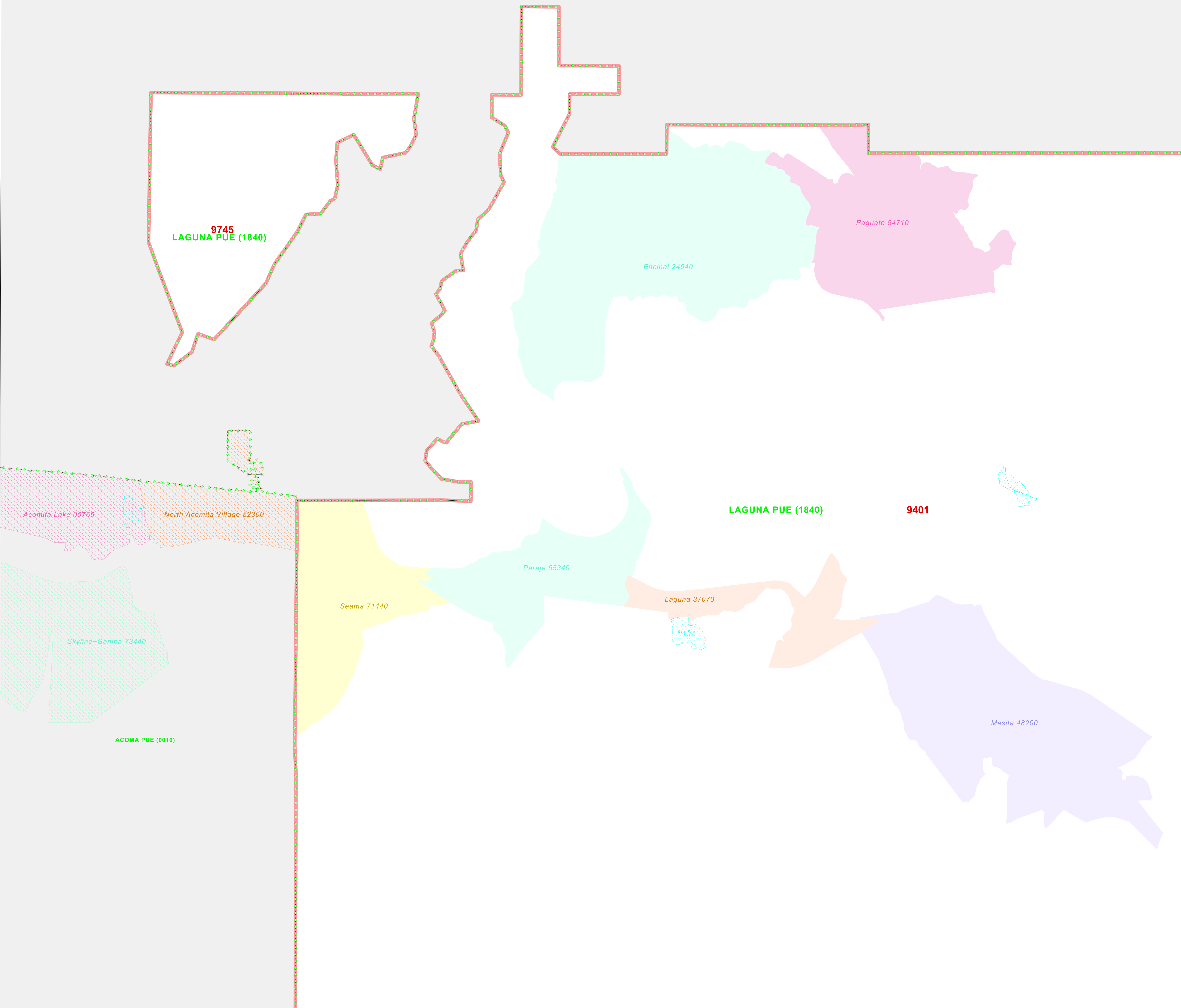
ABBREVIATION REFERENCE: AIR - American Indian Reservation; Trust Land - Off-Reservation Trust Land; OTSA - Oklahoma Tribal Statistical Area; TDSA - Tribal Designated Statistical Area; SDA/SA - State Designated American Indian Statistical Area; GDP - Census Designated Place

FEATURES

All Roads	Stream/Shoreline
Railroad	Inter-Tribal Stream
Pipe/Pump Line	River/Lake
Physical Feature	Glacier
Nonviable Boundary	

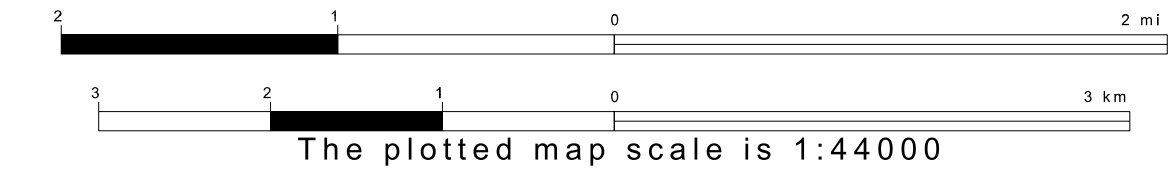
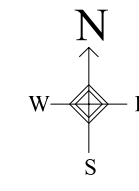
Inset Out Area

¹ This map shows tribal census tract boundaries and numbers. A tribal census tract is a type of census tract defined within a federally recognized American Indian reservation or off-reservation trust land for the purpose of providing data based on an American Indian hierarchy rather than by state and county.



34 960540N
107 634747W

34 960540N
107 274563W



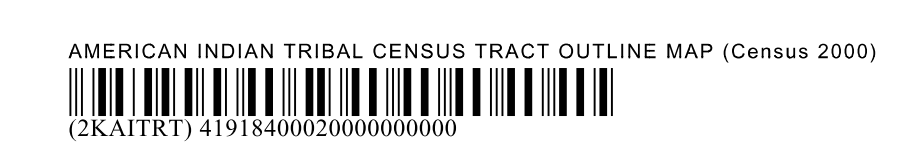
Key to Adjacent Sheets

	1
2	3
4	5

Sheet Location within Entity

SHEET 2 OF 5 PARENT SHEETS
TOTAL SHEETS: 6 (Index 1; Parent 5; Inset 0)

ENTITY TYPE: American Indian Reservation
NAME: Laguna Pueblo and Off-Reservation Trust Land (1840)
ST: New Mexico



All legal boundaries and names are as of January 1, 2000. The boundaries shown on this map are for Census Bureau statistical data collection and tabulation purposes only; their depiction and designation for statistical purposes does not constitute a determination of jurisdictional authority or rights of ownership or entitlement. Source: U.S. Census Bureau's TIGER database (Census 2000). Projection: State-based Albers' Equal Area. U.S. DEPARTMENT OF COMMERCE Economics and Statistics Administration U.S. Census Bureau