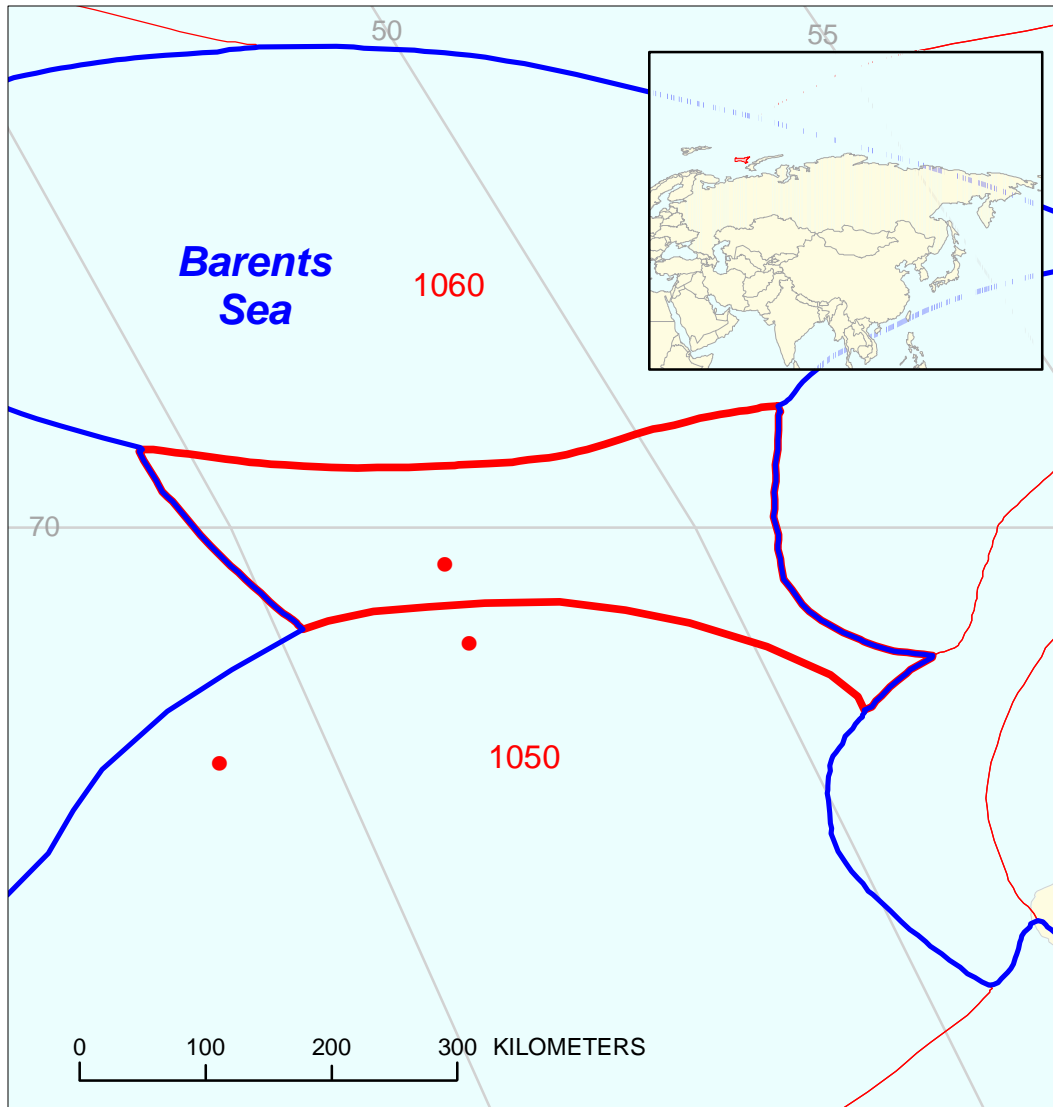


Ludlov Saddle Geologic Province 1059



South and North Barents
Triassic-Jurassic
Total Petroleum System 105001

- South and North Barents Triassic-Jurassic Total Petroleum System 105001
- Ludlov Saddle Geologic Province 1059
- Other geologic province boundary

Ludlov Saddle, Province 1059
Assessment Results Summary - Allocated Resources

[MMBO, million barrels of oil. BCFG, billion cubic feet of gas. MMBNGL, million barrels of natural gas liquids. MFS, minimum field size assessed (MMBO or BCFG). Prob., probability (including both geologic and accessibility probabilities) of at least one field equal to or greater than the MFS. Results shown are fully risked estimates. For gas fields, all liquids are included under the NGL (natural gas liquids) category. F95 represents a 95 percent chance of at least the amount tabulated. Other fractiles are defined similarly. Fractiles are additive under the assumption of perfect positive correlation. Shading indicates not applicable]

Code and Field Type	MFS	Prob. (0-1)	Undiscovered Resources											
			Oil (MMBO)				Gas (BCFG)				NGL (MMBNGL)			
			F95	F50	F5	Mean	F95	F50	F5	Mean	F95	F50	F5	Mean

1059 Total: Assessed onshore portions of Ludlov Saddle Province

Oil Fields		0.00	0	0	0	0	0	0	0	0	0	0	0	0
Gas Fields						0	0	0	0	0	0	0	0	0
Total		0.00	0	0	0	0	0	0	0	0	0	0	0	0

1059 Total: Assessed offshore portions of Ludlov Saddle Province

Oil Fields		1.00	9	33	89	39	22	80	228	97	1	5	14	6
Gas Fields							8,181	25,784	56,591	28,290	152	510	1,276	585
Total		1.00	9	33	89	39	8,203	25,864	56,819	28,387	153	514	1,291	591

1059 Grand Total: Assessed portions of Ludlov Saddle Province

Oil Fields		1.00	9	33	89	39	22	80	228	97	1	5	14	6
Gas Fields							8,181	25,784	56,591	28,290	152	510	1,276	585
Total		1.00	9	33	89	39	8,203	25,864	56,819	28,387	153	514	1,291	591

Ludlov Saddle, Province 1059
Assessment Results Summary - Allocated Resources

[MMBO, million barrels of oil. BCFG, billion cubic feet of gas. MMBNGL, million barrels of natural gas liquids. MFS, minimum field size assessed (MMBO or BCFG). Prob., probability (including both geologic and accessibility probabilities) of at least one field equal to or greater than the MFS. Results shown are fully risked estimates. For gas fields, all liquids are included under the NGL (natural gas liquids) category. F95 represents a 95 percent chance of at least the amount tabulated. Other fractiles are defined similarly. Fractiles are additive under the assumption of perfect positive correlation. Shading indicates not applicable]

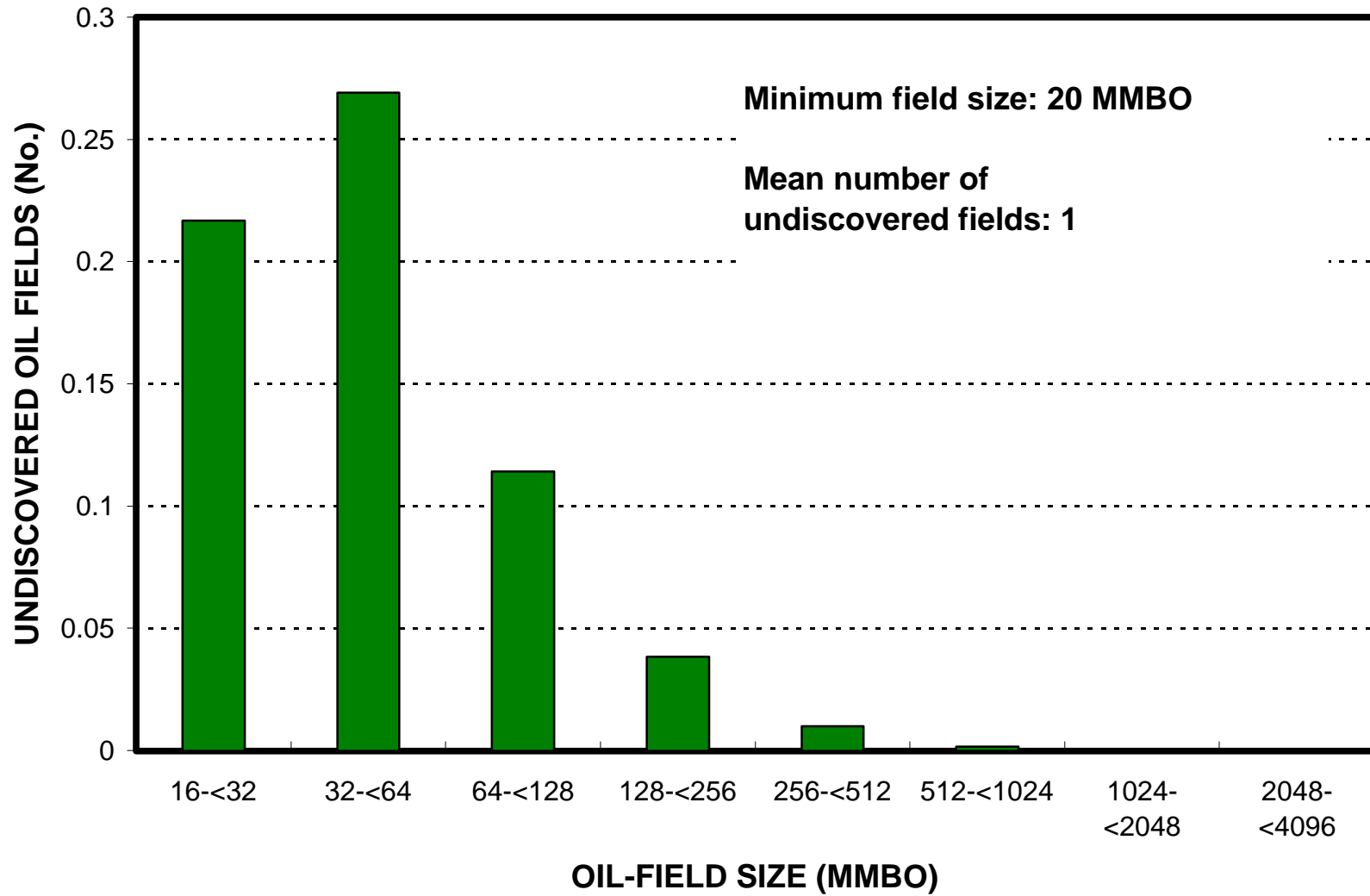
Code and Field Type	MFS	Prob. (0-1)	Undiscovered Resources											
			Oil (MMBO)				Gas (BCFG)				NGL (MMBNGL)			
			F95	F50	F5	Mean	F95	F50	F5	Mean	F95	F50	F5	Mean

105001 South and North Barents Triassic-Jurassic Total Petroleum System

10500102	South Barents and Ludlov Saddle Assessment Unit (15% of undiscovered oil fields and 15% of undiscovered gas fields allocated to OFFSHORE province 1059)													
Oil Fields	20		9	33	89	39	22	80	228	97	1	5	14	6
Gas Fields	120	1.00					8,181	25,784	56,591	28,290	152	510	1,276	585
Total		1.00	9	33	89	39	8,203	25,864	56,819	28,387	153	514	1,291	591

Ludlov Saddle, Province 1059

Undiscovered Field-Size Distribution



Ludlov Saddle, Province 1059

Undiscovered Field-Size Distribution

