

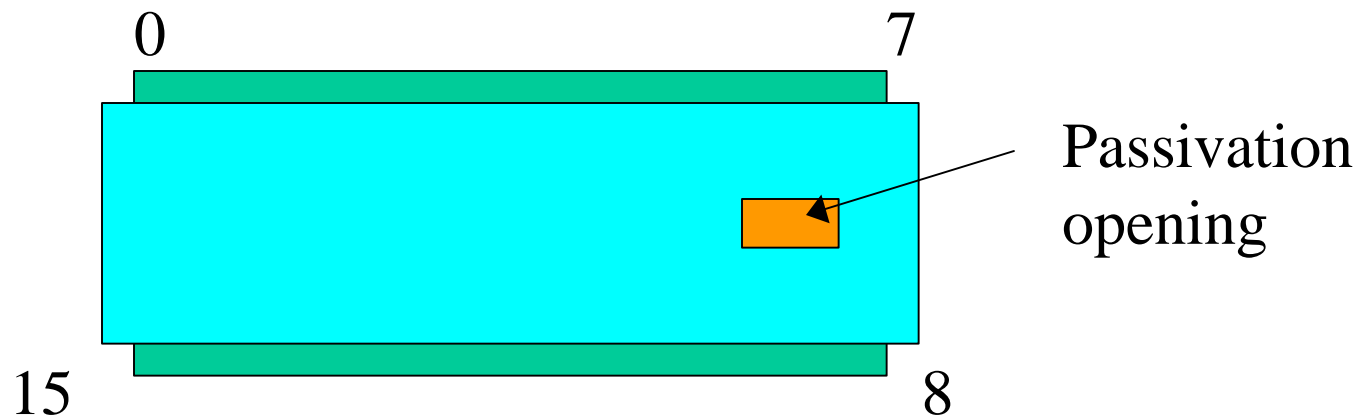
# X-Ray of IZM Parts

M. Gilchriese

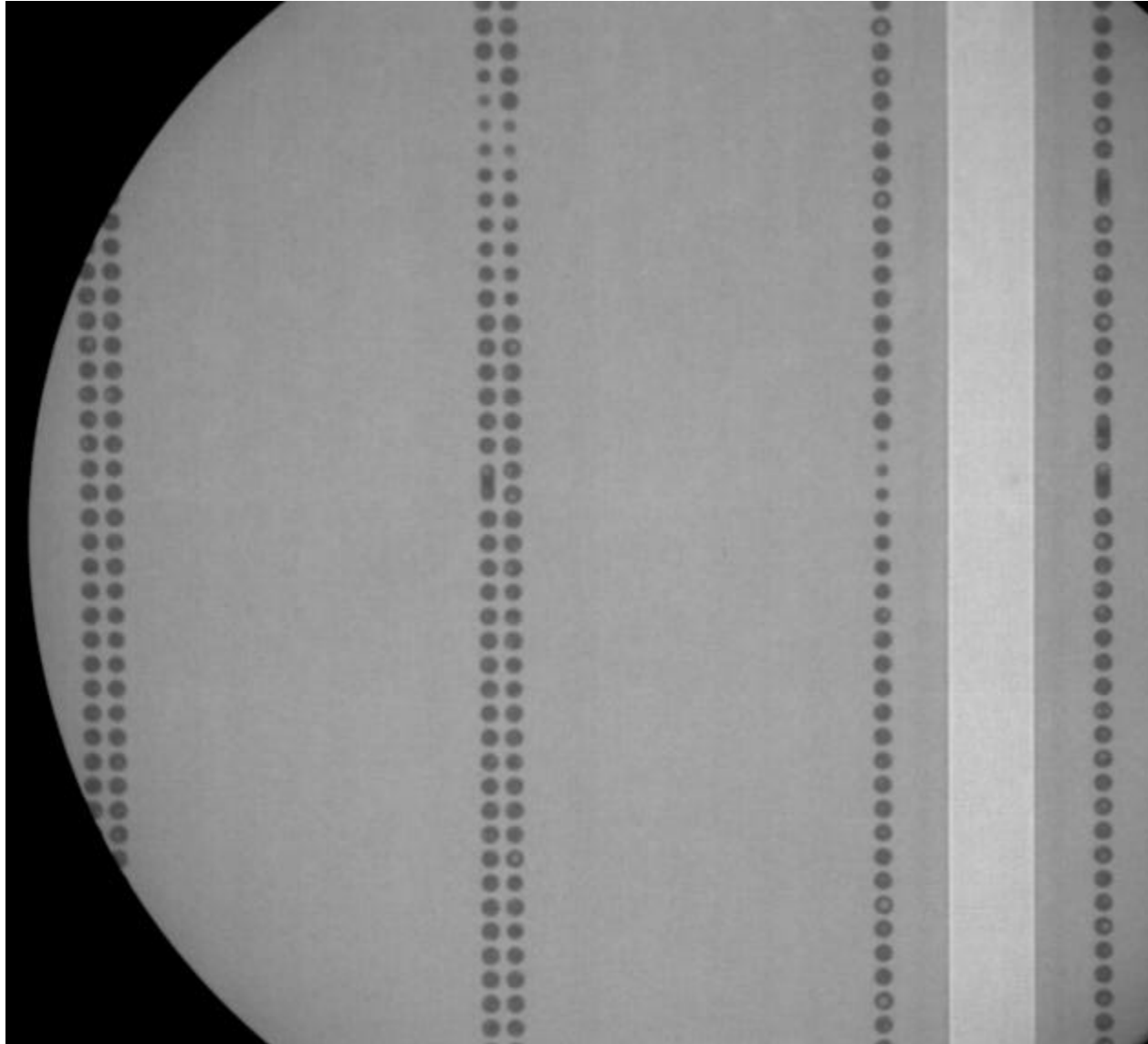
April 1999

# Method

- X-Ray of modules and single chip assemblies at X-Tek
- All done in gelpaks
- Chip numbering convention used is different than IZM and is shown in drawing

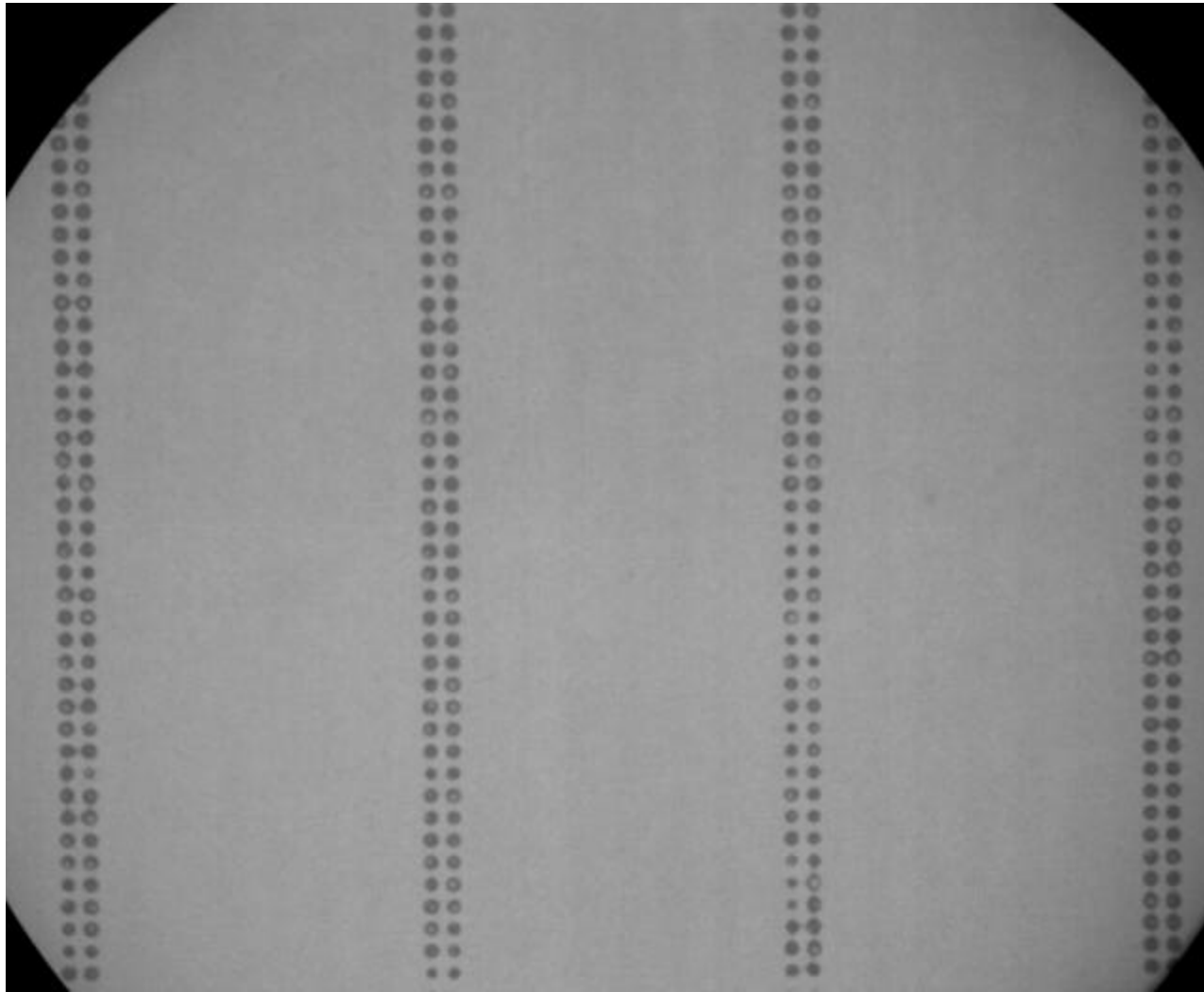


# 3135-11 Chip 1



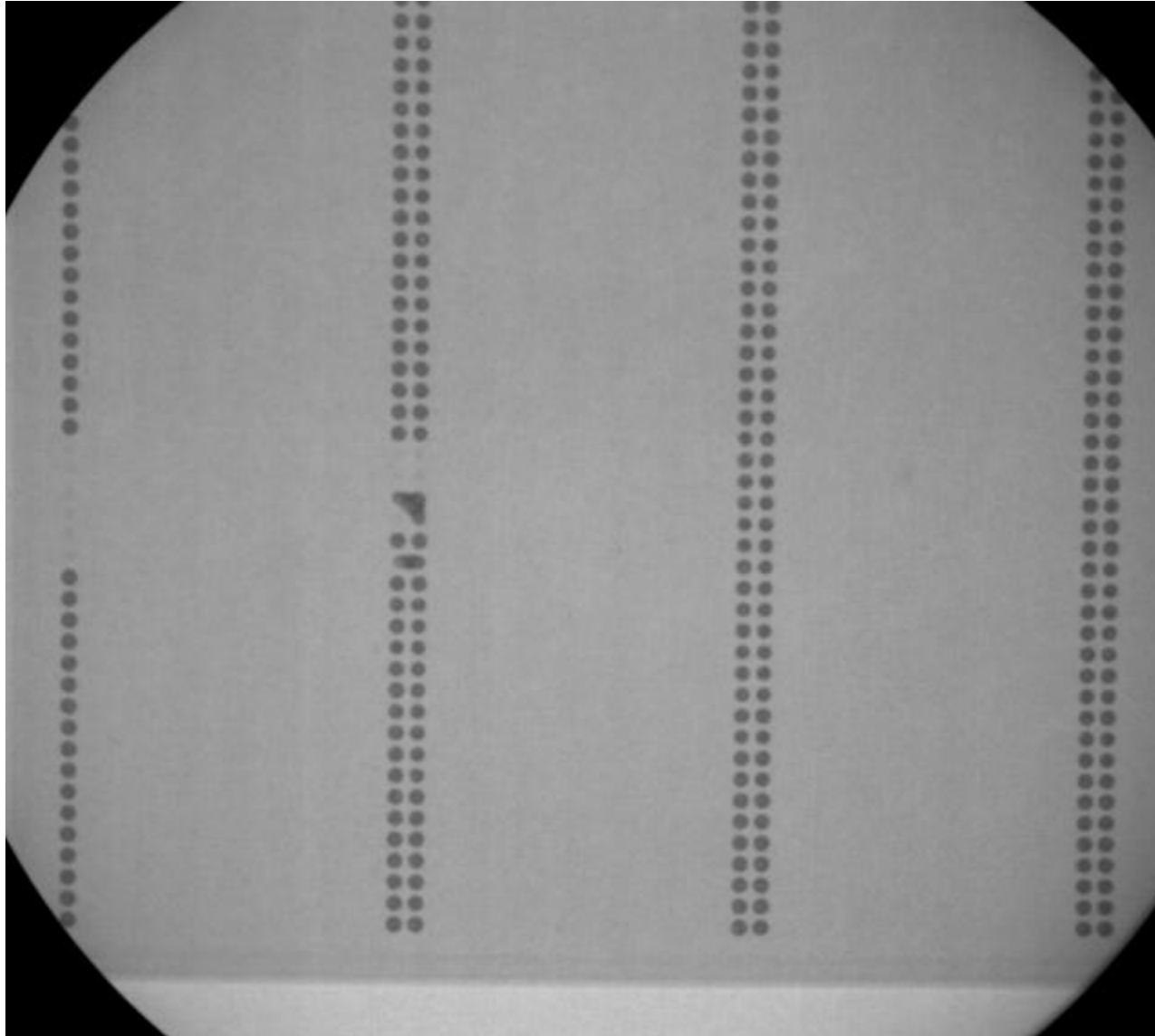
- This picture shows typical region when merged bumps are present in single column.
- Also shows small region of smaller than normal bumps

# 3135-11 Chip 10



- Large region of smaller bumps mixed with normal size bumps

# 3134-21 Chip 4



- Region of missing and few merged bumps