

## **APPENDIX H**

---

LSV Simulations of the Spatial Distributions of Wake  
Power on Point White, Bainbridge Island

## LSV Simulations of the Spatial Distributions of Wake Power on Point White, Bainbridge Island

The following plots show cumulative wake power at breaking near the shore over a 100-m reach of the shore along Point white, Bainbridge Island in Rich Passage. Wake power has been predicted with the LSV model as described in Section 5.5 of the report. The plots are supplementary to the summary plots provided in Section 5.5. The location of the individual stations shown in Figures H-1 through H-7 is shown in Figure H-8. The plots shown below include results for all simulations run for the three vessels: Snohomish, Bravest, and Condor Express; running in both directions (Seattle to Bremerton = S-B; Bremerton to Seattle = B-S); and for the two different water levels (Low water slack = LWS; High water slack = HWS).

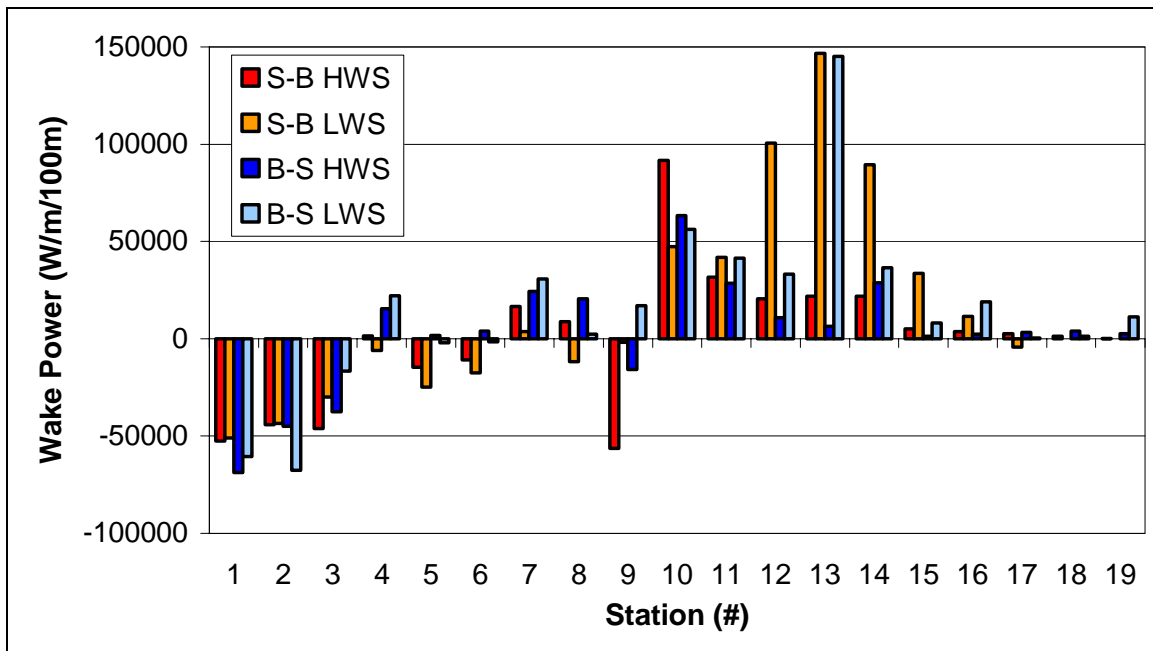


Figure H-1. Snohomish

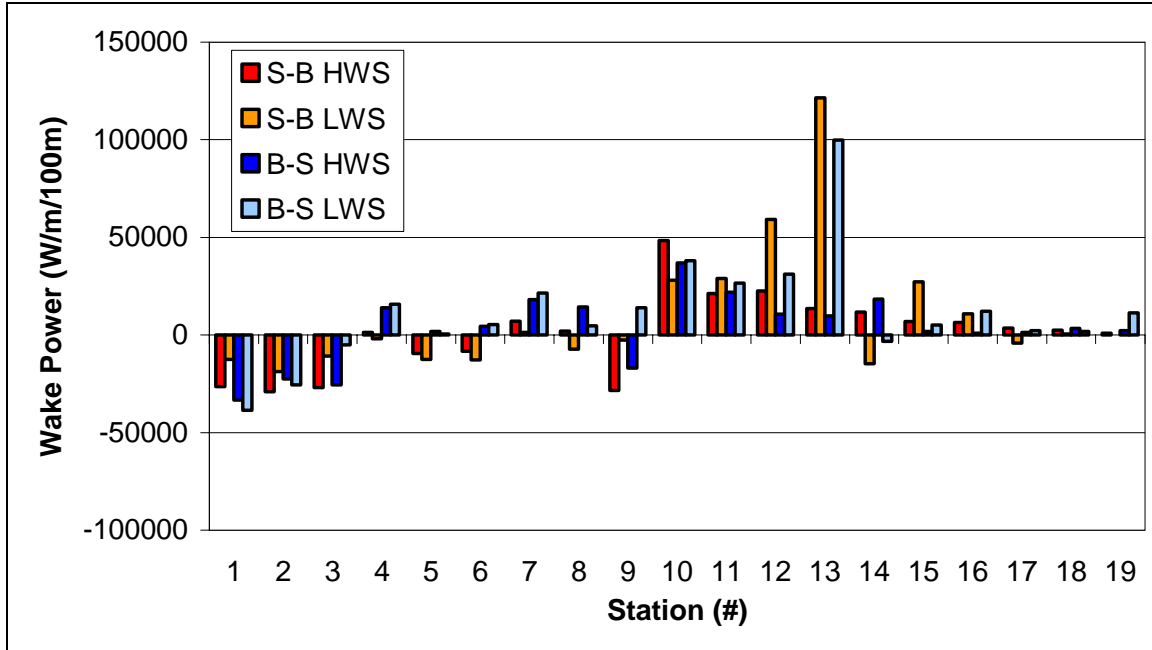


Figure H-2. Bravest

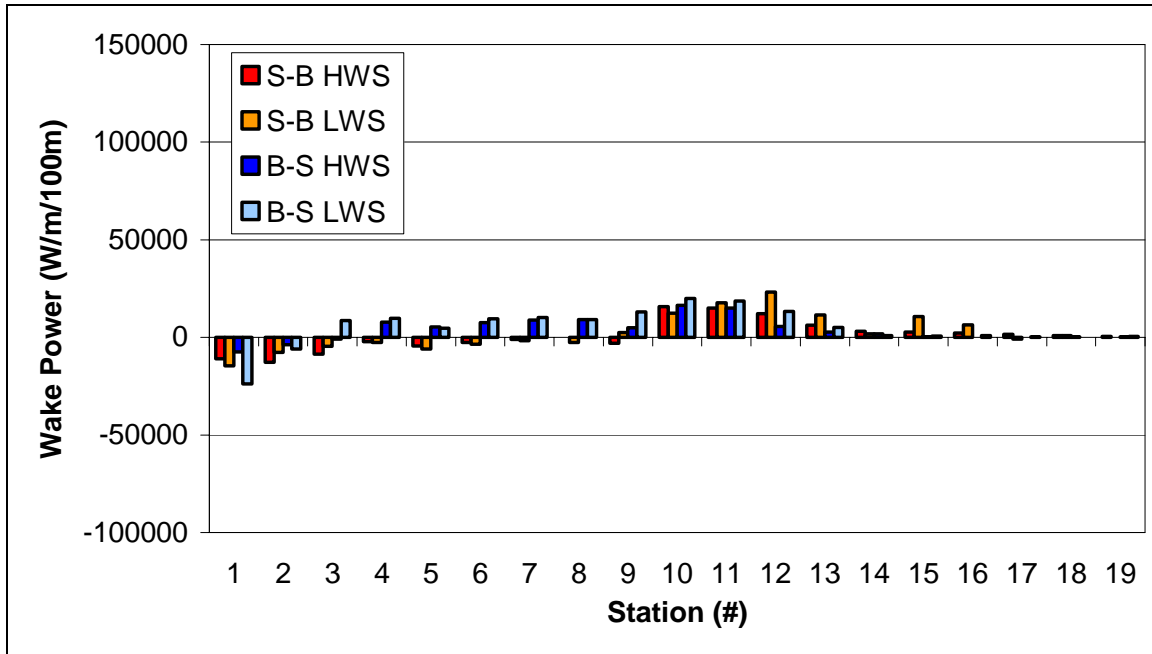


Figure H-3. Condor Express

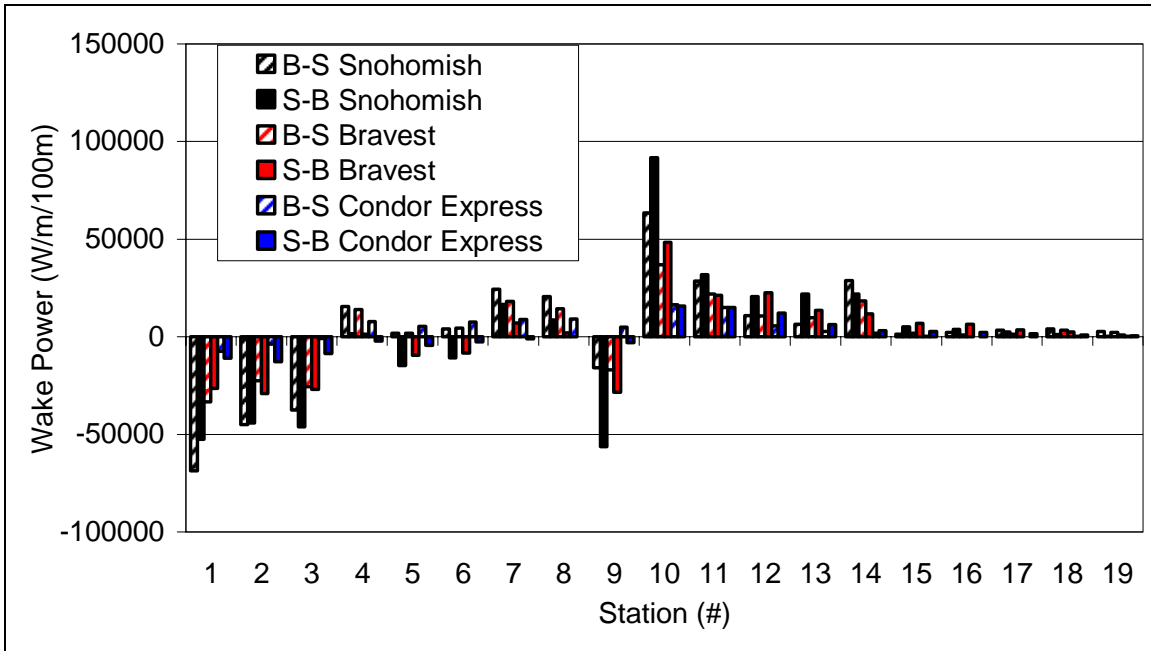


Figure H-4. High water slack

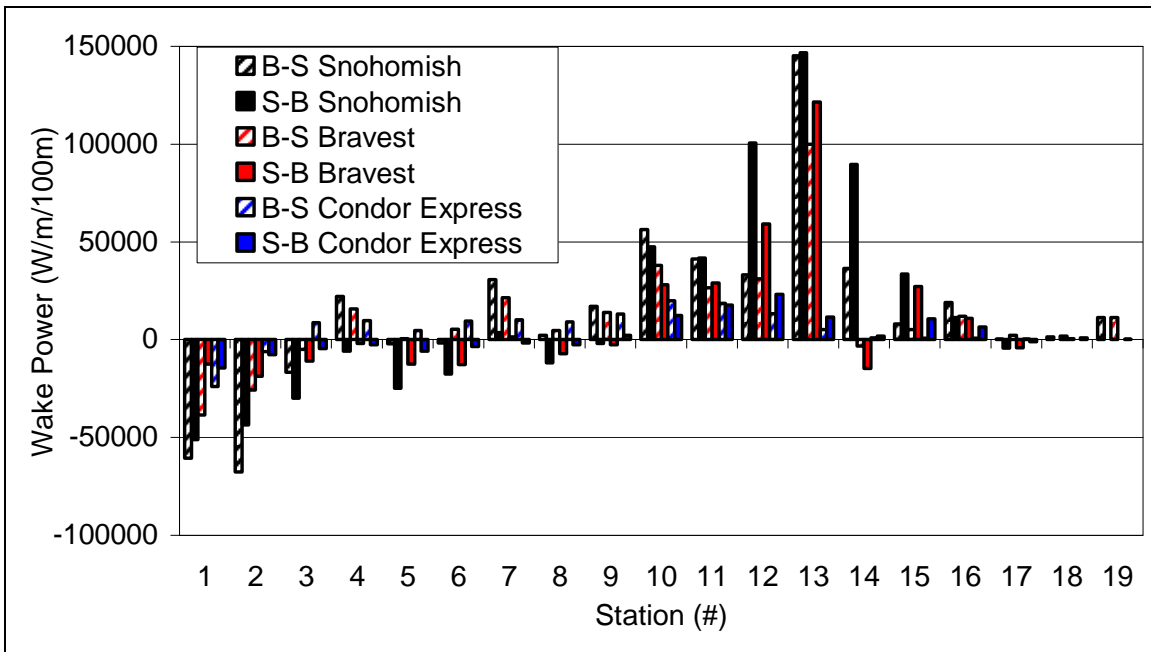


Figure H-5. Low water slack

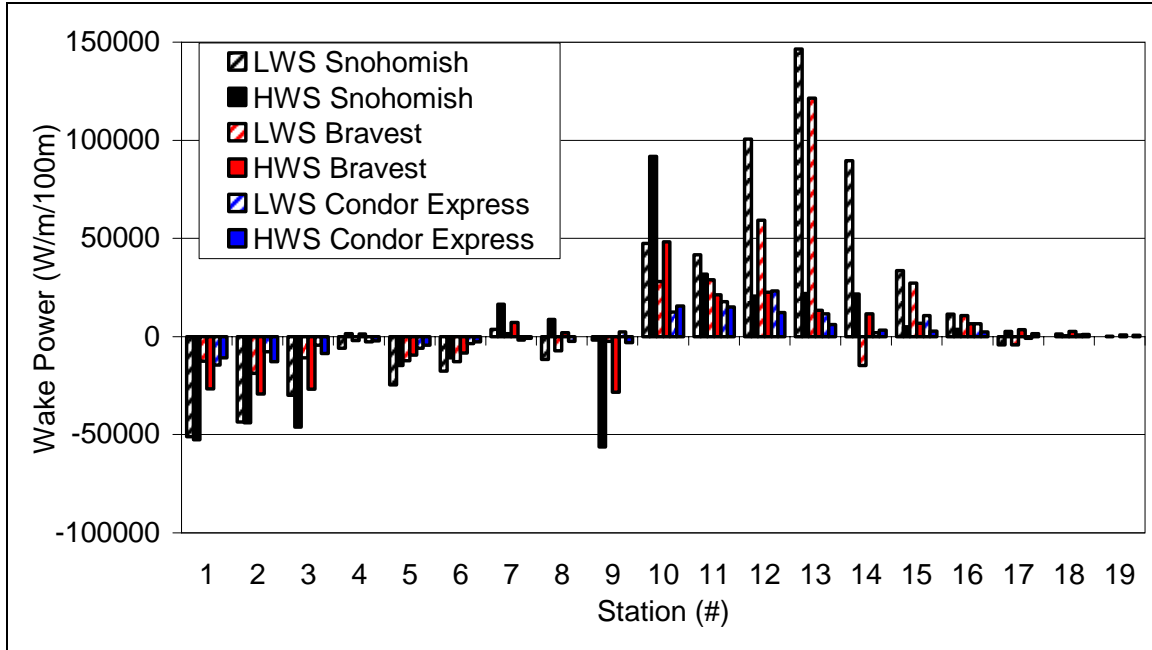


Figure H-6. Seattle to Bremerton

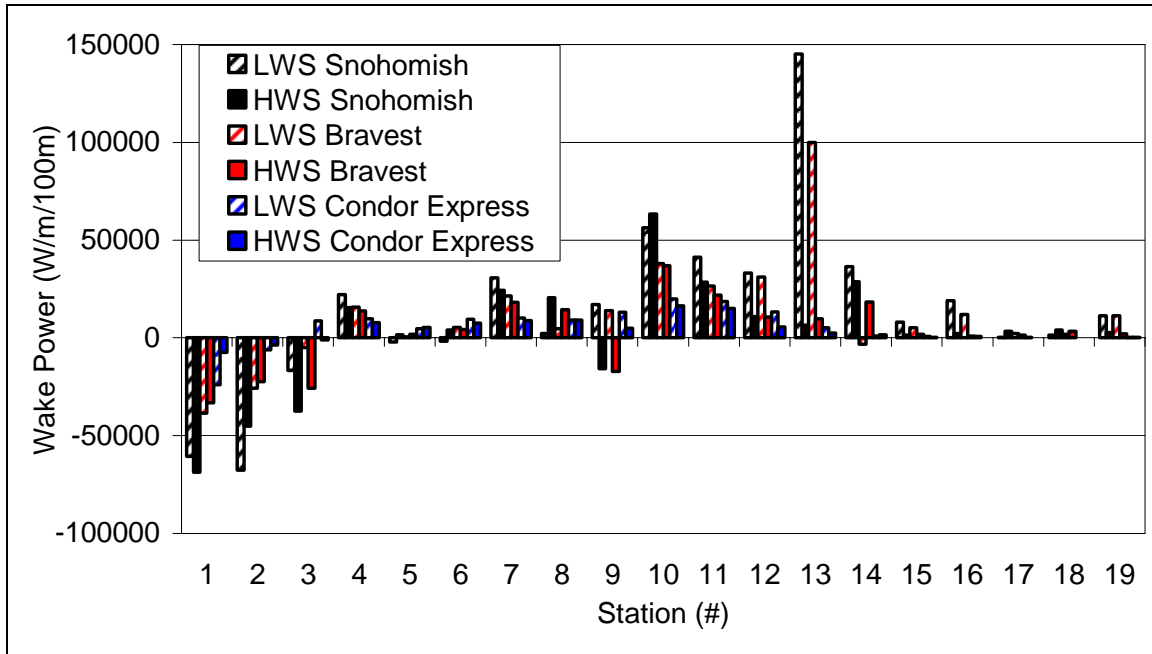
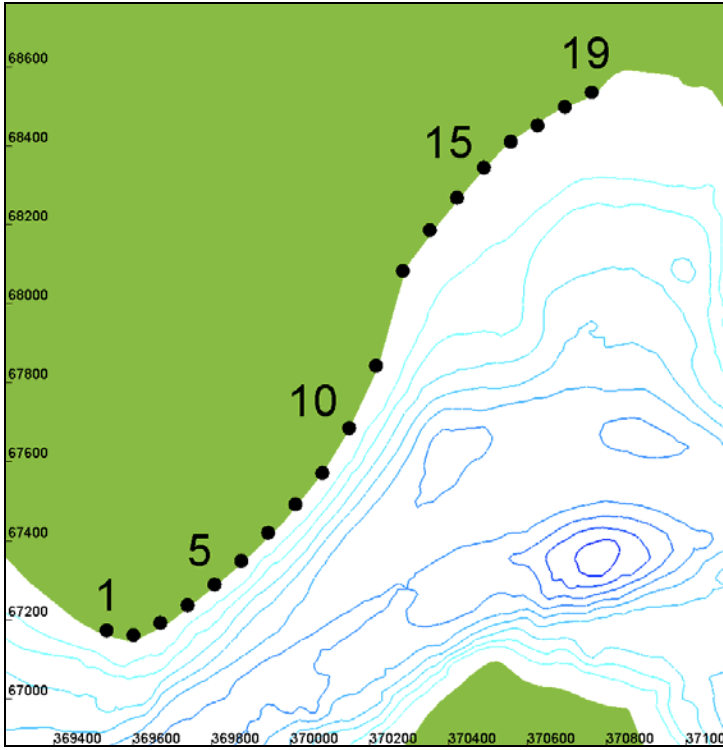


Figure H-7. Bremerton to Seattle



**Figure H-8. Figure showing locations of stations**