

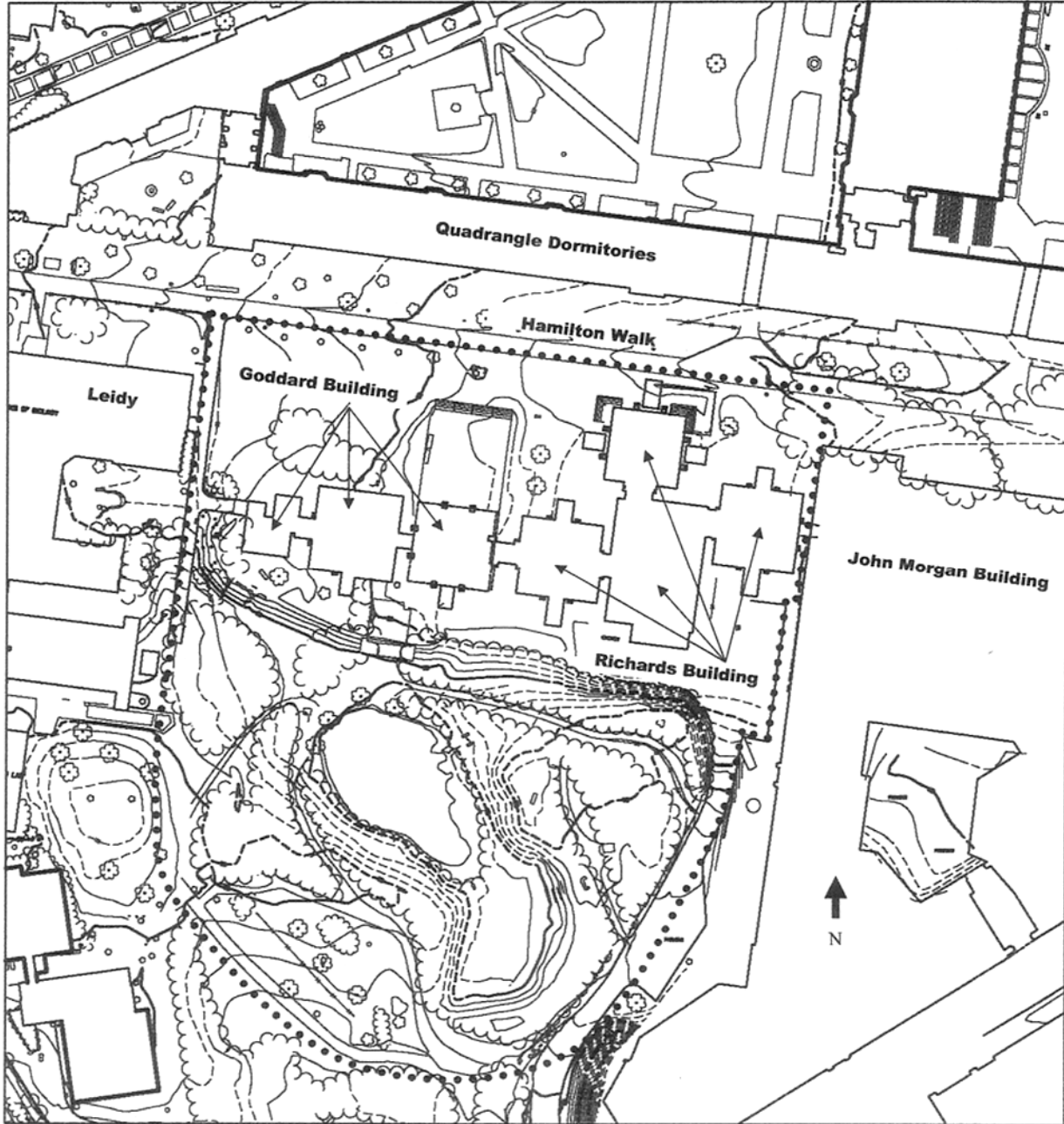
# RICHARDS AND GODDARD BUILDINGS

# Photos

United States Department of the Interior, National Park Service

National Register of Historic Places Registration Form

## Site Plan and Boundary Richards and Goddard Buildings, Philadelphia, Pennsylvania



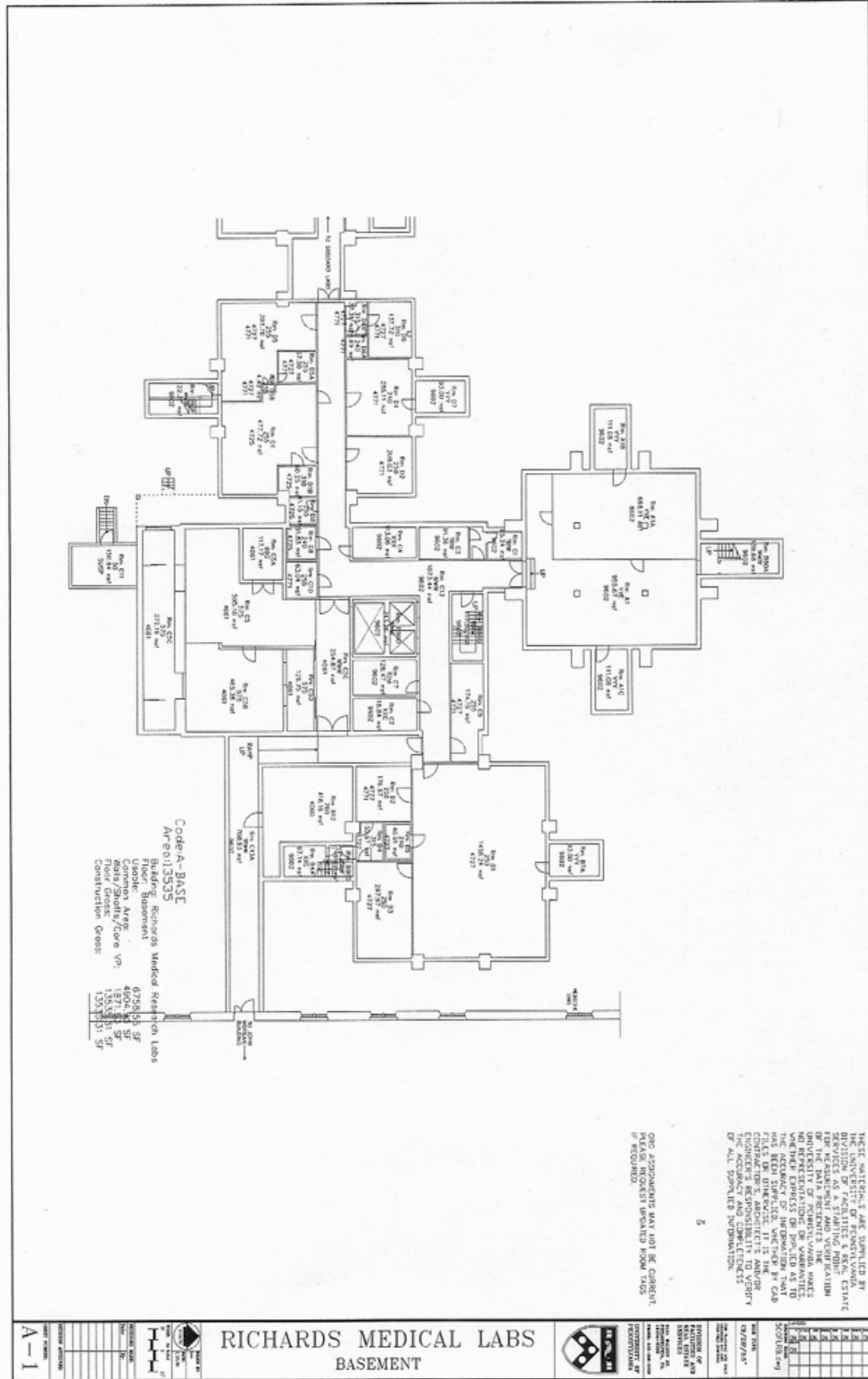
..... Boundary

# RICHARDS AND GODDARD BUILDINGS

United States Department of the Interior, National Park Service

# Photos

National Register of Historic Places Registration Form



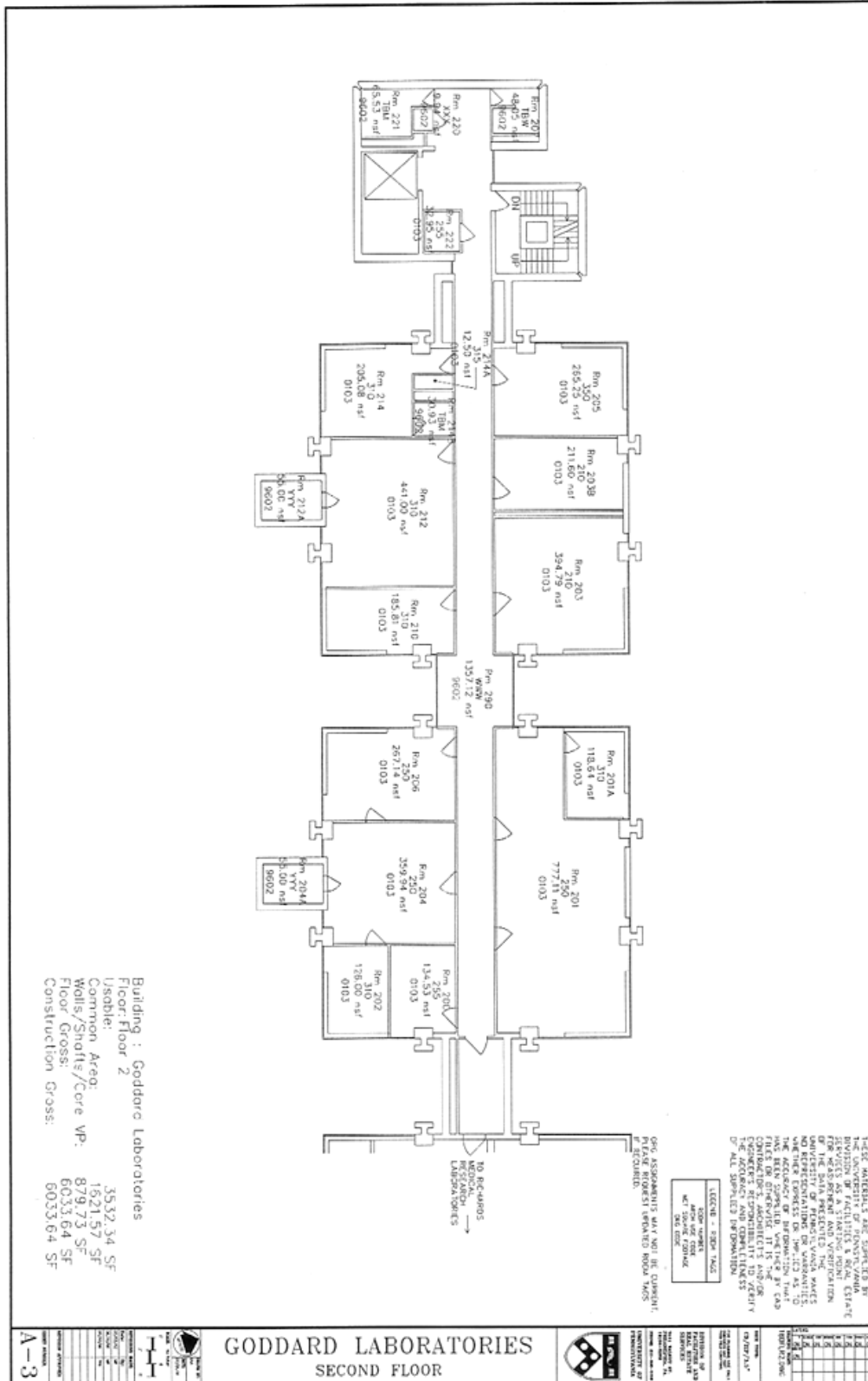
Representative floor plan, Richards Building  
University of Pennsylvania, Division of Facilities and  
Real Estate Services, 1991

# RICHARDS AND GODDARD BUILDINGS

United States Department of the Interior, National Park Service

## Photos

National Register of Historic Places Registration Form



Representative floor plan, Goddard Building  
University of Pennsylvania, Division of Facilities and  
Real Estate Services, 1991

# RICHARDS AND GODDARD BUILDINGS

United States Department of the Interior, National Park Service

# Photos

National Register of Historic Places Registration Form



Richards (left) and Goddard (right) buildings, looking southeast from Hamilton Walk  
Emily T. Cooperman, photographer, 2008



# RICHARDS AND GODDARD BUILDINGS

United States Department of the Interior, National Park Service

# Photos

National Register of Historic Places Registration Form



Richards Building, with John Morgan Building at left, looking west  
Emily T. Cooperman, photographer, 2008



# RICHARDS AND GODDARD BUILDINGS

United States Department of the Interior, National Park Service

# Photos

National Register of Historic Places Registration Form



Richards Building from Kaskey Garden, looking north  
Emily T. Cooperman, photographer, 2008



# RICHARDS AND GODDARD BUILDINGS

United States Department of the Interior, National Park Service

## Photos

National Register of Historic Places Registration Form



Richards Building, rear service tower (left) and eastern laboratory tower (right)  
Emily T. Cooperman, photographer, 2008

# RICHARDS AND GODDARD BUILDINGS

United States Department of the Interior, National Park Service

# Photos

National Register of Historic Places Registration Form



Richards Building, entry, looking southeast (top), and entrance detail showing the Vierendeel truss system (bottom)  
Emily T. Cooperman, photographer, 2008



# RICHARDS AND GODDARD BUILDINGS

United States Department of the Interior, National Park Service

## Photos

National Register of Historic Places Registration Form



Richards Building, lobby detail, poured-in-place, reinforced concrete treatment, looking south  
Emily T. Cooperman, photographer, 2008

**RICHARDS AND GODDARD BUILDINGS**

United States Department of the Interior, National Park Service

**Photos**

National Register of Historic Places Registration Form



Richards Building, elevators in 6<sup>th</sup> Floor corridor,  
rear service tower, looking southeast  
Emily T. Cooperman, photographer, 2008



**RICHARDS AND GODDARD BUILDINGS**

United States Department of the Interior, National Park Service

**Photos**

National Register of Historic Places Registration Form



Richards Building, view from 7<sup>th</sup> Floor of western laboratory tower, looking west  
Emily T. Cooperman, photographer, 2008

**RICHARDS AND GODDARD BUILDINGS**

United States Department of the Interior, National Park Service

**Photos**

National Register of Historic Places Registration Form



Richards (foreground) and Goddard (rear) buildings, looking southwest  
John Dixon Hunt, photographer, March 2008



**RICHARDS AND GODDARD BUILDINGS**

United States Department of the Interior, National Park Service

**Photos**

National Register of Historic Places Registration Form



Western towers, Goddard Building, looking northwest from Kaskey Garden  
Emily T. Cooperman, photographer, March 2008



**RICHARDS AND GODDARD BUILDINGS**

United States Department of the Interior, National Park Service

**Photos**

National Register of Historic Places Registration Form



Upper floors of Goddard Building, eastern laboratory and classroom tower, looking east, showing projecting carrel volumes  
Emily T. Cooperman, photographer, March 2008



**RICHARDS AND GODDARD BUILDINGS**

United States Department of the Interior, National Park Service

**Photos**

National Register of Historic Places Registration Form



Western tower, Goddard Building, looking southeast from Hamilton Walk  
Emily T. Cooperman, photographer, April 2008

**RICHARDS AND GODDARD BUILDINGS**

**Photos**

United States Department of the Interior, National Park Service

National Register of Historic Places Registration Form



Goddard Building, east entry, looking southwest  
Emily T. Cooperman, photographer, 2008



**RICHARDS AND GODDARD BUILDINGS**

United States Department of the Interior, National Park Service

**Photos**

National Register of Historic Places Registration Form



Goddard Building, detail of strip window in western stair tower, looking northwest  
Emily T. Cooperman, photographer, 2008

**RICHARDS AND GODDARD BUILDINGS**

United States Department of the Interior, National Park Service

**Photos**

National Register of Historic Places Registration Form



Goddard Building, 8<sup>th</sup> Floor faculty office in western tower, looking east  
Emily T. Cooperman, photographer, 2008